

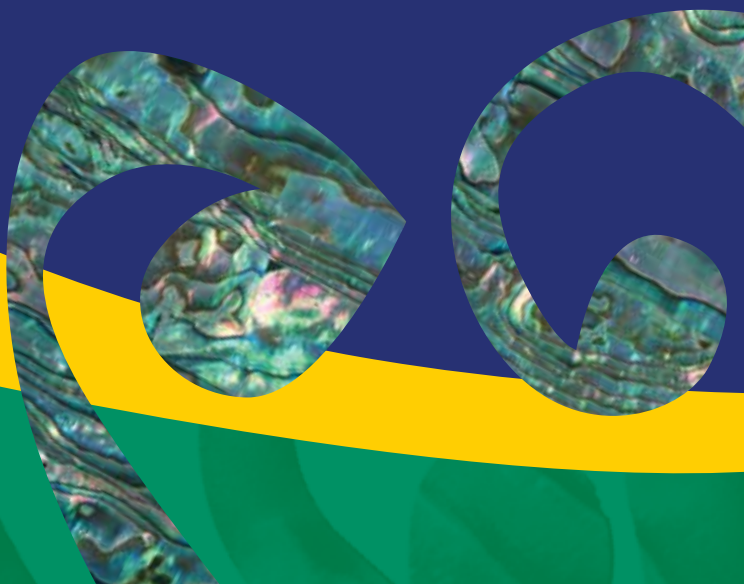
# Hoea rā



**Ngāti Kahungunu Iwi**  
INCORPORATED

## Annual Report 2012 - 2013

Published November 2013



# Table of Contents

	Page
Purpose, Vision & Mission	1
Chairperson's Report	2
Chief Executive's Statement	3
Election Report 2013	4
Board Member Statements	5
Staff Members 2011-2012	7
Ngāti Kahungunu Iwi Incorporated Organisation Structure	8
Culturally Strong	9
Fisheries and Environment	11
Strong, Vibrant, Healthy Whānau	13
Benefits to Members	15
Kahungunu Asset Holding Company Report	20
Financial Statements	25
Audit Report	34
Annual Plan 2012-2013	36
AGM Agenda	40



# Purpose, Vision & Mission

Ngāti Kahungunu Iwi Incorporated, with the mandate to represent the people of Ngāti Kahungunu, is the governing body for all aspects of Ngāti Kahungunu Iwi development.

The purpose of Ngāti Kahungunu Iwi Incorporated is to:

- Promote or assist the education of Ngāti Kahungunu Iwi;
- Promote the custody and preservation of the beliefs, customs and language of Ngāti Kahungunu Iwi;
- Promote the social and economic welfare advancement and vocational training of Ngāti Kahungunu Iwi;
- Promote personal, whānau and community health and wellbeing and raise the living standards of Ngāti Kahungunu Iwi;
- Promote high quality communications to and for the benefit of the members of Ngāti Kahungunu Iwi.

## *Strategic Objectives*

In September 2001 consultation with whānau throughout the rohe of Kahungunu occurred. Whānau shared their views, aspirations and desires which helped shape the development of a vision to guide Ngāti Kahungunu into the future. The vision, known as Kahungunu 2026, outlines the vision and mission statements and seven identified strategic objectives to focus on. The Ngāti Kahungunu Iwi Inc. planning framework continues to outline priorities, activities and desired outcomes that link directly to the seven strategic objectives within the Kahungunu 2026 vision.

The seven strategic objectives are:

- Ngāti Kahungunu - Culturally Strong;
- Ngāti Kahungunu - Healthy and Vibrant Whānau;
- Ngāti Kahungunu - Economically Strong;
- Ngāti Kahungunu - Informed and Participating Citizens in the World;
- Ngāti Kahungunu - Independent and Self Determined;
- Ngāti Kahungunu - Healthy, Thriving and Sustainable Environment
- Ngāti Kahungunu - Making our Mark

## *Vision Statement*

“Kahungunu - ki te whaiao, ki te ao mārama”

Achieving excellence in all areas of our lives

## *Mission Statement*

Kia maumahara ki te mana āhua ake o Ngāti Kahungunu

Uphold the absolute uniqueness of the living breath of Kahungunu

“To enhance the mana and well-being of Ngāti Kahungunu Iwi”

## *Reporting*

Ngāti Kahungunu Iwi Incorporated has an obligation to provide an 'Annual Report' for its membership to account for the previous financial year 1 July 2012 – 30 June 2013. This document provides a summary report against the objectives set out in the 2012-2013 Annual Plan. It includes steps taken to increase the registration database and gives an overview of the organisations performance, including changes in the value of its assets, profit distribution and the annual audited financial report.

# Chairperson's Report



E tōku hinengaro anō  
He wā kāinga e hokia ana mai  
Ki ngā rau murimuri aroha  
Whāia te iti kahurangi

Ahakoā niania, he pounamu!

Ka tangi ki ngā mate o te tau. Hoki atu rā koutou ki ō tāua rahi i te pō tē kitea! Ki kōnei koutou katoa tangihia ai e mātau kua mahue mai nei ki muri. Haere e ngā mate, nau mai rā e te hunga ora.

## **Mauri Tū, Mauri Ora**

This has been an exciting year for Ngāti Kahungunu, with no one event more so than the purchase by the Kahungunu Asset Holding Company of Tautāne Station, which has proved to be a tonic amongst most sectors of our Iwi. Then there was the purchase and utilization of Te Matau-a-Māui, our sailing waka, which has been trialing both sailing and economic pathways. Our previous Chief Executive, Meka Waitiri who made it all the way into parliament on the back of a strong and enthusiastic, youthful campaign team. As a result of Meka's success we now have a new Chief Executive in Dr Adele Whyte, who was one of four directors groomed by Meka to fulfil the Chief Executive role. She takes to the role in her own right.

## **Kanohi ki te kanohi**

We continue to face some mighty challenges, including the pursuit of our rights and interests in wai māori and other natural resources, such as oil and gas. We prefer negotiation to litigation and are talking to Ministers on a regular basis over these issues through the Iwi Chairs Forum (ICF). However, looming large at our windscreen is the Ruataniwha Dam proposal which we have decided to oppose for several reasons, but our stance is mainly about retaining rangatiratanga over our waterways. This has led us into conflict with some hapū. Other challenges we face concern the continual dwindling of te reo, kawa and tikanga resources of people on and around our marae and hapū kaupapa. A research project and a reo review were undertaken throughout the year and strategies are now being developed around implementation of those findings. In the fisheries arena, there will be a dent in our annual income due to new legislation penalizing the use of Foreign Charter vessels that once caught our quota.

## **Haere tū mai, hoki tū atu**

The NKII Board underwent an election process earlier this year and we now have three new Board members, farewelling Robert Ropiha, Bill Hamilton and Roy Pewhairangi and welcoming Noelene Smiler, Karauna Brown and John Barry Smith. Since the financial year ended, we have also farewelled former Board members Tipu Tareha, Paora Ropiha and Tom Paku, who all died in the same week at the relatively young ages 57 yrs, 59 yrs and 61 yrs. Auē te aroha!

## **Pakihiwi ki te pakihiwi**

We have continued to develop our relationships with all Kahungunu claimant groups as well as Rongomaiwahine and Rangitane, and there is a warming climate throughout, although there have been and will continue to be natural tensions that will be skillfully managed.

## **Mā pango, mā whero, ka oti!**

Our overall financial position remains strong with the added spike of the Tautāne purchase, but we have maintained an overall positive upward trend in equity.

Our staff, with unflagging whānau support and the bevy of volunteers, have once again outperformed themselves in this hectic, bustling, cacophonous iwi-scape, so alongside them and on behalf of the NKII Board, I am pleased to present this year's annual report.

Tihei Kahungunu!

A handwritten signature in black ink, appearing to read 'Ngahiwi Tomoana'.

**Ngahiwi Tomoana**  
Chairman

# Chief Executive's Statement



Ngāti Kahungunu, tēnā rā tātau i ō tātau mate tuatini,

E tangihia mai rā i te ao, i te pō, i tēnā takiwā, i tēnā takiwā,

Moe mai rā e hika mā i te pō nui, tēnā tātau i a rātau, Otirā, tēnā tātau i a tātau te hunga ora, kia ora mai rā tātau katoa.

E kī nei te kōrero, mate atu he tētēkura, ara mai anō he tētēkura.

Ka tika kia takoto i konei ngā mihi nui ki a Meka Whaitiri kua eke nei hai māngai mō Ikaroa-Rāwhiti, ā, tae noa ki te pukahu o ngā mahi i oti i te wā i a ia e whakahaere ana i Te Kaporeihana o Ngāti Kahungunu Iwi. Haere Meka me ō mātau whakaoro nui, ā, kia tāwharautia koe e te wāhi ngaro ki roto i ō hikoitanga katoa.

Ngāti Kahungunu, kia ora tātau i roto i ngā tini āhuetanga o te tau kua pahure ake nei – ōna piki, ōna heke, ōna pai, ōna kino, ōna tū āhua katoa. Kia tau tonu iho rā ngā manaakitanga a te wāhi ngaro ki runga ki tēnā, ki tēnā o koutou, huri, huri noa i tō tātau rohe, kia ora mai tātau katoa.

It is my pleasure to present the 2012-2013 Annual Report to the whānau and hapū of Ngāti Kahungunu on behalf of Ngāti Kahungunu Iwi Incorporated (NKII). However, first I'd like to take a moment to acknowledge and pay a tribute to our outgoing CE Meka Whaitiri who on the 29th of June 2013 was elected as the Member of Parliament for the Ikaroa-Rawhiti electorate. It is through Meka's hard work and leadership, that during her two month absence from the office to concentrate on her campaign and following her successful election, the mahi of the office did not falter. On behalf of the staff and Board of NKII we wish Meka well in her new political career.

Given the size of our tribal rohe stretching from Paritū (north of Mahia) to Turakirae (southern Wairarapa) it is always going to be a challenge to engage and work with our various whānau and hapū. However, despite the difficulties, all four directorates – Te Reo, Tikanga & Mātauranga, Natural Resources, Te Ara Toi Ora and Support Services are absolutely committed to ensuring that all whānau and hapū where ever they are in Ngāti Kahungunu, Aotearoa or across the world can have their voices heard and contribute to the Iwi 25 year Vision and associated strategies. We are actively demonstrating this whakaaro by ensuring that our bi-monthly NKII Board hui are rotated throughout the rohe, that wānanga and other hui run by each directorate are also moved and shared around the rohe. We are embracing new technology, the Ngāti Kahungunu Facebook page was launched last year and quickly reached the limit of 5000 friends.

We have adapted our page to allow more whānau to subscribe and obtain valuable updates as they occur.

I'd like to commend the Directors and their staff for another incredible year of mahi. Our Annual Plan for the year was set and was achieved within our allocated budget. Protections of the "rights and interests" of Ngāti Kahungunu whānau, hapū and iwi with regards to freshwater, created additional unbudgeted demands upon our resources.

Fortunately additional income was received to offset these expenses. Further work in the "Freshwater space" will be managed through obtaining external funding or working within available existing budgets.

Some key highlights for the year include the review of the Te Reo Strategy, the increase in the number and quality of events that NKII runs and supports within the Kahungunu rohe, the growing numbers and capacity of whānau committed to supporting the strategic goals of Te Ara Toiora (the Health and Wellbeing strategy), and the on-going engagement with the Crown and others in the areas of Natural Resources (including Fisheries, Petroleum and Freshwater). The overall finances of



# Chief Executive's Statement

the organisation remain in good shape, with a surplus of \$139,852 being achieved. However, forward financial planning remains essential to the iwi over the coming years with a number of high profile iwi projects on the go or forecast for the near future e.g. Te Matau a Māui, Innovation Hub and Matatini 2017.

Congratulations to the Kahungunu Asset Holding company for another fantastic year, resulting in a consolidated net surplus of \$3,872,489 taking our closing equity from \$59,646,629 to \$63,289,118.

I would like to pay my humblest respects to Meka and the NKII Board, especially the kaumātua Haami Hilton and Deputy Chair Rill Meihana for instilling their faith in me to lead the organisation. I am grateful for the experience of working first hand with our inspiring leader and Chairman Ngahiwi. I would also like to thank the NKII staff for their incredible efforts over the past year. Each year, we seem to lift our performances even higher and we do this because we are passionate about our mahi and our people. I'm so proud to be able to lead such an amazing team who do so much for the betterment of our whānau, hapū and iwi. I salute you all. To all Kahungunu whānau I wish you a Merry Christmas and a joyous festive season with your friends, whānau and loved ones.

Tihei Kahungunu!



**Dr Adele Whyte**  
Chief Executive

## Election Report 2013

The Ngāti Kahungunu Iwi Incorporated Board controls and manages the business and affairs of Ngāti Kahungunu Iwi Incorporated. The Board Membership comprises of 10 Tangata Whenua Members as follows: the Chairperson; one Kaumātua representative; one representative from each of the 6 Taiwhenua/Rohe; and 2 representatives from the Taurahere areas. The triennial election was held on the 30th April 2013. The 2013-2016 Board and Alternate Board members are as follows:

Position	Board Member	Alternate Board Member
1. Chairman	Ngahiwi Tomoana	
2. Kaumātua	Haami Hilton	
3. Wairarapa	Nelson Rangī	Te Horipo Karaitiana
4. Tāmaki-nui-a-Rua	Hayden Hape	Amokura Gaffey
5. Tamatea	John Barry Heperi-Smith	Aramanu Ropiha
6. Heretaunga	Mike Paku	Jaamin Pere
7. Te Whanganui-a-Orotū	Karauna Brown	Roy Pewhairangi
8. Wairoa	Rill Meihana (Deputy Chairperson)	Alice Wairau
9. Taurahere	Owen Purcell	Bill Rayner
10. Taurahere	Noelene Smiler	Toni Huata

The next triennial election will take place in April 2016.

# Board Member Statements



Haami Hilton

## **Kaumātua – Haami Te Kuru Hilton**

Ko Kahurānaki te maunga  
Ko Ngaruroro te awa  
Ko Poukawa te waiū  
Ko Kahurānaki te marae  
Ko Te Rangikoianake te hapū  
Ko Te Whatuiapiti te tangata  
Ko Te Hāpuku te rangatira  
Ko Takitimu te waka  
Ko Ngāti Kahungunu te iwi  
Ko Haami Hilton tōku ingoa

## **Te Whanganui-a-Orotū – Karauna Brown**

Ko Titi-o-Kura te maunga  
Ko Mōhaka te awa  
Ko Te Rangihiro te tangata  
Ko Te Hāroto te marae  
Ko Ngāti Hineuru me Ngāti Kahungunu ngā iwi  
Ko Ngāti Pārau me Ngāti Whakaari ngā hapū  
Ko Mataatua me Takitimu ngā waka  
Ko Karauna Brown tōku ingoa



Karauna Brown



Michael Anthony Paku

## **Heretaunga – Michael Anthony Paku**

Ko Kahurānaki te maunga  
Ko Ngaruroro te awa  
Ko Ruahāpia te marae  
Ko Ngāti Hawea te hapū  
Ko Takitimu te waka  
Ko Ngāti Kahungunu te iwi  
Ko Mike Paku tōku ingoa

## **Wairoa – Rill Riwai Karangaroa Meihana**

Ko Moumoukai te maunga  
Ko Nuhaka te awa  
Ko Tamakahu, Ko Te Poho o te Rehu ngā marae  
Ko Rākaipaaka te hapū  
Ko Takitimu te waka  
Ko Ngāti Kahungunu te iwi  
Ko Riwai Rill Meihana tōku ingoa



Rill Meihana



John Barry  
Heperi-Smith

## **Tamatea – John Barry Heperi-Smith**

Ko Te Rangi-tapu-ā-whata te maunga  
Ko Whatumā te waiū  
Ko Takitimu te waka  
Ko Te Rongo-a- Tahu te marae  
Ko Ngāti Kahungunu te iwi  
Ko Ngāi Te Kikiri o te Rangi, ko Ngāi Tahu  
Mākakanui, ko Ngāi Toro-i-waho ngā hapū  
Ko JB Heperi-Smith tōku ingoa

# Board Member Introductions



Hayden Hape

## **Kahungunu ki Tāmaki-nui-a-Rua – Hayden Hape**

Ko Kaitoki ngā marae  
Ko Ngāti Pakapaka te hapū  
Ko Takitimu te waka  
Ko Ruahine te maunga  
Ko Manawatu te awa  
Ko Ngāti Kahungunu te iwi  
Ko Hayden Hape tōku ingoa

---



Nelson Rangī

## **Kahungunu ki Wairarapa – Nelson Francis Rangī**

Ko Papawai te marae  
Ko Ngāti Moe te hapū  
Ko Takitimu te waka  
Ko Ngāti Kahungunu te iwi  
Ko Nelson Rangī tōku ingoa

---



Owen Purcell

## **Taurahere – Owen Purcell Smiler**

Ko Kahurānaki, ko Te Mata o Rongokako ngā maunga  
Ko Ngaruroro te awa  
Ko Ruahāpia te marae  
Ko Ngāti Hori, ko Ngāti Hawea ngā hapū  
Ko Takitimu te waka  
Ko Ngāti Kahungunu te iwi  
Nō Kirikiriroa ahau  
Ko Owen Purcell tōku ingoa

---



Noelene Smiler

## **Taurahere – Noelene Smiler**

Ko Whakapūnake tōku maunga tipua  
Ko Hangaroa rātau ko Kaitarahaē ko Ruakituri  
ōku awa  
Ko Te Reinga tōku marae  
Ko Tuarenga tōku wharenuī  
Ko Hine-kōrako tōku wharekai  
Ko Ngāti Kohatu rātau ko Ngāti Ruapani ko Ngāti  
Hinehika ōku hapū  
Ko Ngāti Kahungunu tōku iwi  
Ko Takitimu tōku waka  
Ko Noelene Mauritania Smiler tōku ingoa



# Staff Members 2012-2013

The operational structure for the tari was designed to allow an integrated approach to all activities within the office. Specific units exist in the structure to implement the current iwi strategies. The senior management team meets regularly to align their strategic outputs directly with the annual plan and the overall strategic vision of the iwi.



**Meka Whaitiri**  
Chief Executive  
(Jul 2012 – Apr 2013)



**Dr Adele Whyte**  
Acting Chief Executive  
(May 2013 – Jun 2013)



**Dr Adele Whyte**  
Director of Fisheries  
and Environment



**Jeremy Tātere MacLeod**  
Director of Te Reo,  
Tikanga and Mātauranga



**Jenny Smith**  
Director of Health  
and Wellbeing



**Ngaio Tiuka**  
Fisheries and  
Environment  
Analyst



**Alex-Ann  
Edwards**  
Te Reo Research  
Analyst



**Dr James Graham**  
Kahungunu  
Cultural Standards  
Project Manager



**Connie Collins**  
Kaitoko Whānau



**Lesley Tawhai**  
Kaitoko Whānau

## Support Services



**Kerrin Fair**  
Database  
Administrator



**Naina Watene**  
Executive  
Assistant



**Te Rangi Huata**  
Events &  
Promotions  
Manager



**Hine Hape**  
Finance Officer



**Michelle Ferris**  
Senior  
Administrator  
& Receptionist



**Ruth Wong**  
Team Leader and  
Communications  
Advisor



**Danielle  
Keil-Lambert**

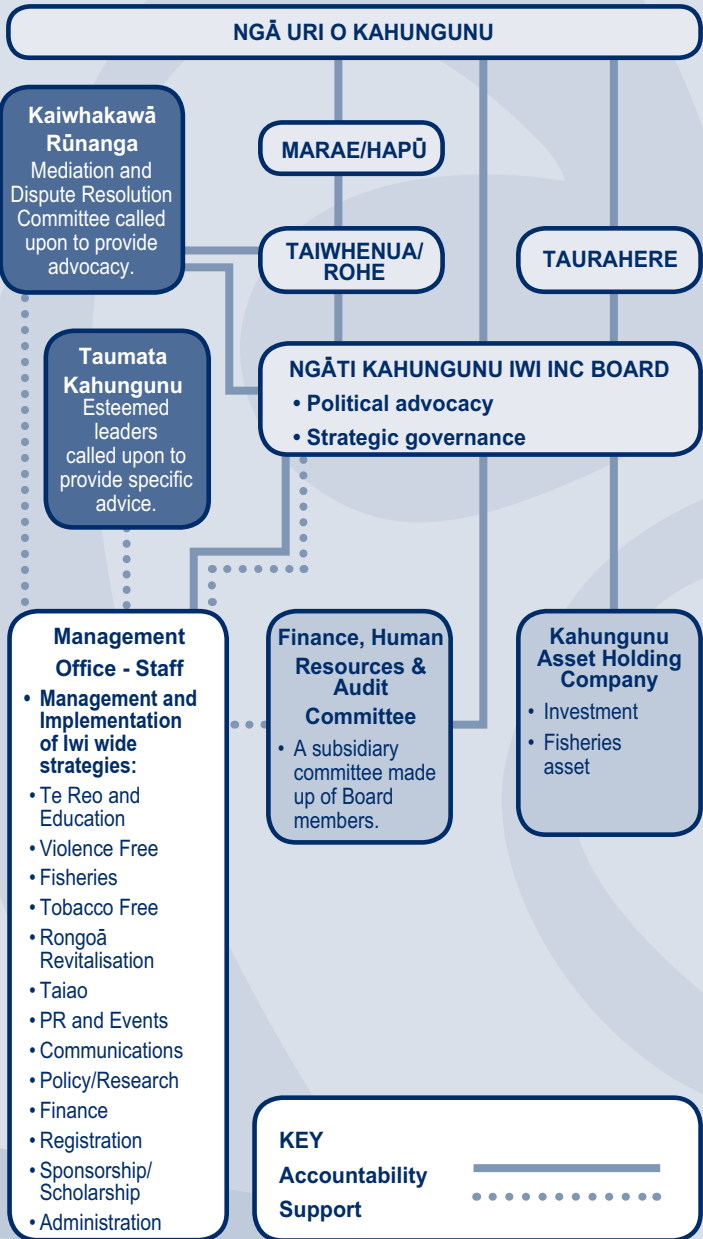


**Naomi Wilson**

We acknowledge Danielle Keil-Lambert and Naomi Wilson who both finished work during the 2012-2013 financial year to pursue other pathways. Danielle has been an employee of Ngāti Kahungunu Iwi Incorporated since 1999 and has seen the organisation change over the years. She finished work last year to be a full time mum.

# Ngāti Kahungunu Iwi Incorporated Organisation Structure

Ngāti Kahungunu Iwi Incorporated is governed by ngā uri o Kahungunu members who have the opportunity to participate through marae, taiwhenua/rohe and iwi elections. This diagram depicts the structure of the iwi from marae/hapū to governance level.



# Culturally Strong



*“Tae rawa atu ki te tau 2027, kua noho tonu ko te reo Māori me ōna Ngāti Kahungunutanga, hai reo matua, hai reo kōrero mō Ngāti Kahungunu whānui, ahakoa te kaupapa, ahakoa ki hea.”*

He mea a tonu a Leon (Heketu) Blake, he uri nō Ngāti Hinehika ki Te Reinga, rāua ko Pānia Papa, nō Ngāti Raukawa, ki te arotake i tā Ngāti Kahungunu rautaki reo kua eke ki tōna tau tuawhītu. Ko tā rāua he mātai, he arohaehae, he tātari hoki i ngā painga, i ngā āhuetanga hai whakapakari ake, hai panoni, hai whakahou rānei. Ko tō Leon rāua ko Pānia waimaria, i karapotia rāua e tētahi ohu e kīia ana ko Te Rōpū Mātārae hai ārahi, hai tohutohu, hai whakahau, hai tautoko anō hoki i a rāua i roto i ā rāua mahi arotake. Me kore ake ngā mātanga reo nō roto o te rohe whānui o Ngāti Kahungunu tonu, pēnei i a Tākuta Tīmoti Kāretu rātau ko Liz Hunkin, ko Materoa Haenga, ko Tākuta Joseph Te Rito, ko Brian Morris, ko Heke Huata, ko Hira Huata, ko Kōtuku Tomoana, ko Pāora Amundsen, ko Helena Ferris, ko Pare Rohe-Belmont.

I huri hoki ngā kaiarotake tokorua me Jeremy Tātere MacLeod i te whānuitanga o ngā Taiwhenua e ono o te rohe o Ngāti Kahungunu, tae atu anō rā ki ngā Taurahere e rima puta noa i Aotearoa, ki te whakarongo ki ngā kōrero, ki ngā piki me ngā heke o te rautaki i whakarewaina ai i te tau 2006. Heoi anō tā Leon rāua ko Pānia he kohikohi, he raupapa, he tātari, he wānanga i ngā kōrero a te iwi whānui o Ngāti Kahungunu kia pai ai tā rāua whakatakoto i ō rāua whakaaro hai pūrongo mā ngā mana o Ngāti Kahungunu Iwi Inc., otirā mā te iwi whānui, ā, mehemea e tika ana, ka whakatakotohia hoki tētahi rautaki hou.

Ko te tūmanako he hua ka puta i te arotake mā te iwi, otirā, mā ngā whakatipuranga e haere ake nei me kore noa te reo Māori e noho mai anō hai reo matua mō Ngāti Kahungunu! Kei noho ka wawata noa, e hika mā!

Nā, ko tā Te Pae Huarewa (Ngā Paerewa Ahurea o Ngāti Kahungunu – Kahungunu Cultural Standards), kia eke panuku ā tātau tamariki mokopuna i roto i te katoa o ngā kaupapa o te mātauranga. Mai i ngā akoranga kōhungahunga, arā, i te Early Childhood Education, ki ngā kura tuarua, ki ngā whare wānanga – ki tua noa atu!

I toko ake te ingoa nei, arā, Te Pae Huarewa (Ngā Paerewa Ahurea o Ngāti Kahungunu), i a Pinepine Te Kura; i tērā wāhanga tonu e whakahua nei “... i te Toi huarewa”. Ko Te Toi huarewa nei, ko te aka matua tonu i pikitia rā e Tāwhaki, kia tae mārika atu ai ia ki te toi rawa o ngā rangi. Kāti, hai tā tāua whakamahi i tērā tikanga whakaaro i ēnei rā, ka kī tāua, ahakoa te kaupapa, me eke panuku, eke Tangaroa! Waihoki, ko Te Toi huarewa nei, kei roto tonu i ngā kaupapa whakaakoranga a Te Wānanga Whare Tapere o Takitimu. Koia tērā e tohu nā ki ana ākonga, arā, koirā rawa te tiketiketanga o te mātauranga, o ngā mahi toi ka akona, ka whakatinanahia e te hunga e whai ana i te tohu toi o tērā wānanga. Heoi anō, hai ‘Te Toi huarewa’ a Ngāti Kahungunu e whakanui nei i ana tangata

# Culturally Strong

toi; ko Professor Piri Sciascia rātau ko Dr. Pita Sharples, ko Ngapo Wehi me tōna hoa rangatira a Pimia Wehi (kua hoki atu nei ki Paerau) anake ngā mea kua whakawhiwhia ki tērā.

Nikā tētahi atu kaupapa rangahau a Ngāti Kahungunu Iwi Inc. i ngā marae 84 o Ngāti Kahungunu e kiia nei ko Whakamana i te Pae o Huaki Pōuri.

He rangahau tēnei e aro pū ana ki te oranga o ngā pae kōrero me ngā pae karanga i runga i ngā marae o Ngāti Kahungunu. Kua whakaritea te rangahau nei kia haere mō ngā tau e whā, ā, e toru hoki ōna wāhanga kua tapaina ki Te Tauparapara, Te Ngako me Te Tāepaepatanga.

Kai Te Tauparapara tou rā mātau, e whakapā tou ana ki ngā marae, e whakaemi ana hoki i ngā kōrero ā tēnā, ā tēnā. Kua paku raru rā mātau i ētahi o ngā marae nā runga i te tawhito o ngā kōrero i tā mātau pātengi raraunga. Nā reira, mehemea kua whakahoungia e koutou ō koutou nā komiti ā-marae, ngā tāngata whakapā rānei, whakamōhio koa mai ki a mātau o NKII, kia pai ai tā mātau whakapā atu ki ō koutou nā marae mō te kaupapa nei. Nā, kia mōhio mai koutou, kotahi tau noa iho te wāhanga ki Te Tauparapara, nā reira, kia kakama mai!

I tēnei wā, kua oti i a mātau ngā marae 43, ā, kua kitea e 139 ngā kaikōrero, e 149 ngā kaikaranga. Kai te whakaae ngā marae tekau mā rima, ki te tū a te wāhine ki te whaikōrero me te huhua hoki o ngā kōrero tāpiri ki tēnei o ngā pātai. Ki tā tētahi marae, i ngā wā o mua i tū ngā wahine rangatira ki te whaikōrero. Engari kāre hoki e rite ngā wāhine o ēnei rā ki te momo i tū i ērā rā. Nā reira, kua kore taua āhuetanga i runga i tō rātau nā marae. Ko te tokomaha o ngā kaikōrero me ngā kaikaranga he pakeke, ko te pātai kē ia kai hea rā te 'tira hou' e kōrerotia mai nā i tā tātau oriori, a Pinepine te kura?

E 28 ngā marae e whakaae ana kia kōrerohia te reo pākehā ki runga i ō rātau nā marae i ngā pōhiri. Katoa ēnei āhuetanga ka wānangahia i roto i te kaupapa rangahau nei, me kore e kitea he āwhinatanga hai tautoko i ngā marae kia kore e noho tahanga ō rātau nā paepae.

Nō tēnei tau i whakarewaina ai Ngā Tohu Reo Māori a Ngāti Kahungunu hai whakamānawa i te hunga tautoko i te reo Māori i ngā tau. E hika mā, kai hea mai tā tātau kaupapa hai whakarangatira i ngā tautōhito o te reo, nā rātau i ora ai te reo, ā, mei kore ake tō rātau nā momo kua hemo tonu tō tātau nei reo.

Koinei tonu te kipakipa i a tātau katoa kia tahuri katoa ō tātau whakaaro ki tō tātau reo. E hika mā, kai te mate, mā wāi oti tēnā e tohe? Kotahi tonu te huarahi e ora ai te reo, me kōrero, me kōrero! Nā reira, Ngāti Kahungunu, kōrerotia tō reo kia tika, kia rere, kia Māori, tae noa ki ōna Ngāti Kahungunutanga kia kore ai e mate, koi pātai mai ā tātau mokopuna: "E koutou, i ahatia rā taku taonga?", kātahi nā te whakaaro whakawehiwehi!

*Tohaina, tohaina atu rā  
Tēnei reo ki ngā whaitua*

*O tua, o tata*

*O uta, o tai*

*O nuku, o rangi*

*Whakatairangatia e te arero kaingākau*

*Whakakaureratia e te ngākau hihiri*

*Whakatōkia te kōingo ki roto i te whatumanawa*

*Tē motukia! Tē wetekia!*

*Ka whakamau ai, kia tīna! Tīna!*

*Haumī e, hui e, tāiki e!*

**Jeremy Tātere MacLeod**  
Director

# Fisheries and Environment

## KEY HIGHLIGHTS – 2012/2013

The past year has been another busy one for the Fisheries and Environment Unit. Our major focus has been on advocacy and ensuring that the “rights and interests” of our whānau, hapū and iwi are protected. Our roles and responsibilities continue to grow, with a possible name change to the Natural Resources unit being considered. Some key highlights of the past 12 months include:

### **Natural Resources – Including Freshwater and Petroleum – “Advocacy on steroids!”**

- Natural Resources are shaping up to be a critical area for all of New Zealand and Ngāti Kahungunu is playing a vital leading role simultaneously working with whānau, hapū, iwi and the Crown (including Crown agents e.g. Ministries and Regional & Territorial Authorities).
- NKII has stepped up our submissions (both numbers and political content) in the area of “Natural Resources” to all relevant agencies advocating for statutory recognition and that Ngāti Kahungunu “rights and interests” in a range of natural resources should be determined sooner rather than later.
- Regionally, the Tukituki Catchment Proposal (Ruatanuiwha Dam) is an extremely significant project and it is crucial that Ngāti Kahungunu interests and rights are protected, particularly our environmental, social, economic and cultural values.
- The increased number of proposed regional plan changes has been notable, particularly those relating to infrastructure and water related issues. NKII has been contributing to these processes to ensure that Kahungunu interests are reflected favorably in decision-making outcomes.

### **Fisheries Protocol – NKII, Maungaharuru-Tangitū and the Ministry for Primary Industries (MPI) – “Reintegrating customary and commercial fisheries management”**

- Although the details are still to come, this document could signal the initial phase of important relationships developing with Ngāti Kahungunu Treaty Claimants (Large Natural Groups – LNG’s) in combination with the Natural Resources kaupapa discussed above. This is extremely significant and vital for the “United Voice” of Kahungunu as we move into our post-settlement phase.

### **Pāua Reseeding – Kahungunu: “Reconnecting with ourselves and Tangaroa”.**

- In November 2011 over 50,000 juvenile pāua were reseeded in the Kahungunu rohe. Further work completed in the 2012/2013 financial year includes:
  - Monitoring and Research utilising a Ngāti Kahungunu MSc student over the summer of 2012/2013 and offering training for hapū dive teams.
  - A funding proposal for further work has been submitted to MPI.
  - Reseeding in Wairarapa is in the planning phase and is being led by Kahungunu ki Wairarapa.

## ACTIVITIES – 2012/2013

Most of the scheduled activities for the year were completed including:

- Successful Gazettal of Te Matau a Māui and further development of collaborative management models (Sept 2012 - ongoing).
- Te Tai Timu Trust wānanga (Jan 2013)
- Seaweek (March 2013)
- 3rd Annual Fish Hook SUMMIT (March 2013).

Further wānanga, events, hui and activities conducted throughout the year were largely on an ‘ad hoc’ basis responding to the needs at the time. This work heavily focused on advocacy as mentioned above and also includes pānui to Ngāti Kahungunu tangata whenua, relaying any presentations, consultations, meetings and information where relevant and possible:



# Fisheries and Environment

- Hui with Taiwhenua on NKII (Fisheries and Environment) work plans, KKUKKT Strategy.
- Pāua2 sub-division proposal – Member of the technical team. 5 hui-ā-hapū, numerous (6+) hui in Wellington, NK Pāua working group developed. On-going.
- Foreign Charter Vessels – Member of the technical team. Revision of proposed legislation. Work completed.
- WAI hui - 3 hui with LNGs; 2 hui-a-hapū; 5 hui – 1 in each Taiwhenua (exception of Te Whanganui-a-Orotū); 1 on Ruataniwha Dam; 2 National Summits. Ongoing.
- Members of the Ruataniwha Mana Whenua Working group and TANK stakeholders group (20+ hui). Ongoing.
- Submissions include but are not limited to the following: RMA Reforms; Water Reforms; Te Ture Whenua Māori Act 1993 Review; Draft Change 5 for Land and Freshwater use; Charter Boats – recording of catch; Plan Change 5 – Final submission; Tukituki Choices; Feedback on the submission developed by Chen Palmer on "Shares Plus"; Tukituki choices plan change and the Ruataniwha water storage, attendance at initial HBRC hui; Local Government reorganisation; Use of UBA for commercial collection of kaimoana including Kina (MPI); Attendance at Plan Change 5 Hearing; FCV submission on behalf of KAHC and NKII; Attendance at FCV Select Committee Hearing; Petroleum Block offers; Submission on plan change 6; Attendance at HDC regional plan change hui at Waimārama; Plan change 5 – Environmental Court appeal; Appearance at the HBRC Annual planning Hearing. Ongoing – Environmental Court Appeal and EPA submission process current priorities.

Those few activities that weren't completed were largely outside of the control of the Fisheries and Environment Unit. The review of the KKUKKT strategy was delayed to enable wider participation of Large Natural Groups (LNGs). The Fisheries Protocol with Maungaharuru-Tangitū Incorporated and the Ministry for Primary Industries is a major achievement and is a potential catalyst for wider participation and "ownership" of the KKUKKT review. We would like to thank all hapū and whānau who have worked with us over this past year. Your efforts are invaluable.

It should be noted that during the year Morry Black who has lead the development of NKII submissions on Environmental issues over the past decade, decided to focus on other mahi. This necessitated a refocusing of effort and an increase in the workload of the unit to compensate. We would like to thank Morry for his enormous contribution to Ngāti Kahungunu over the years and his unwavering passion for the environment.

## KEY FOCUS FOR 2013/2014

The key focus of Research and Advocacy remain unchanged.

- Taonga species – Tuna (Eels) and Pāua
- Freshwater
- Petroleum
- Review of KKUKKT strategy

## FINAL REFLECTIONS

It is with great sadness that Ngaio and I reflect on the passing of our mentor, advocate, friend and whānaunga Tom Paku. He has contributed an immense amount of his time and energies over many years to protecting the realms of Tangaroa and fighting alongside many others for the Māori commercial and customary fisheries settlements. We will remember him for his dark glasses, vast customary fishing knowledge, his dry sense of humour, his walking stick and trail of smoke.

*Kua hinga te tōtara nui o te wao tapu o Tāne, moe mai, moe mai e te rangatira Tom, moe mai i tō moenga roa, hoki atu rā ki Hawaiki-nui, ki Hawaiki-roa, ki Hawaiki-pamamao, oti atu ai.*

# Strong, Vibrant, Healthy Whānau



## TE ARA TOIORA Ngāti Kahungunu Wellbeing Strategy

Ngāti Kahungunu Iwi supports strong, vibrant, healthy whānau and hapū.

The Directorate of Te Ara Toiora (Kahungunu Health & Wellbeing) has had a busy year with a lot of great work completed by the Forum members of Te Ara Toiora's four Strategic Work streams.

The key challenge for this directorate is always to be inclusive of our Kahungunu Tribal Rohe and ensure we work with each of our 6 Taiwhenua who connect our 86 Kahungunu Marae to facilitate the progress of Te Ara Toiora. The challenge is engaging with central and local government.

In the Kahungunu rohe we have:

- 3 Police Districts
- 3 District Health Boards
- 8 District Councils
- 3 Regional Councils
- 2 Ministry of Social Development Regions

### **Kahungunu Representation - An Iwi view**

In 2012 we further honored our relationship agreement with Sport Hawke's Bay by nominating our Ngāti Kahungunu Iwi representative Kevin Tamati, onto their Governance Board. We also have Taiwhenua representation on the Sport Hawke's Bay Manaaki Committee, which offers Māori advice to the CEO and staff.

We acknowledge on board our newly appointed Kahungunu representatives Shayne Walker on the Department of Corrections National Māori Governance Board, Tracee Te Huia on the Eastern Institute of Technology (EIT) Board and Te Maari Joe on the New Zealand Rongoā Tikanga Standards Committee.

The Ngāti Kahungunu Iwi Inc. Chair Ngahiwi Tomoana is on the Prison Aid & Rehabilitation National Board and along with Board member John Barry Smith (Tamatea) represents Kahungunu on the NZ POLICE National Māori Advisory Group.

### **Tupeka Kore: Tobacco Free Action Forum**

Through the Kahungunu Tobacco Action Group, innovative campaigns have been undertaken over the last year. This Forum is chaired by Ngāti Kahungunu Iwi Inc. Board member Owen Purcell (Taurahere). This year at Waitangi Day Ngāti Kahungunu Iwi launched WERO, a team competition to give up smoking with a first prize of \$5000.00 to a charity of their choice. Seven waka made up of ten people entered the 3 month competition which ended 18th June 2013. A big congratulations to the two joint winners - Te Reinga Netball and Rongomaraeroa Marae.

Ngāti Kahungunu Iwi Inc. also went into partnership with the NZ Police and the Hawke's Bay District Health Board to combat against the evils of Synthetic Cannabis known as K2. This meant we ensured whānau and hapū have information on the affects of K2 and where to go for help. There is also information provided to retailers and support provided to encourage them not to sell K2.

### **Kahungunu Whakarauora Rongoā: Rongoā Revitalisation Forum**

Whakarauora Rongoā is led by our Kahungunu Kaumātua Te Maari Joe, Tiemi Whaanga and Kaupa Teariki. The Pae Mahi who coordinate their rohe rongoā whānau hui are:

# Strong, Vibrant, Healthy Whānau

- Wairoa: Te Miini Smith & Marama Tareha Te Hata
- Ahuriri/Heretaunga: Ruiha Stirling
- Wairarapa: Frances Reiri Smith

Three Te Kauwāe Runga Te Kauwāe Raro Wānanga have been held throughout the year at marae with the first taking place at Papawai Marae, Greytown, then at Takitimu, Wairoa and in June this year the final hui was held at Waipatu, Heretaunga. Each wānanga has transcripts and these along with video and presentations are being compiled onto USB Flash drives for the Rongoā whānau to keep.

## **Te Tumu Whakahaere o Te Wero - Violence Free Strategy**

This Forum is chaired by Ruruhira Tawhai.

This year the Forum has decided to focus on Ngā Mātua Rangatahi, Rangatahi between the ages of 15 – 25 years of age who are parents. The forum looks at the challenges for this vulnerable group and how as a forum we can collectively manaaki and tautoko these rangatahi.

The Kahungunu Criminal Justice Project is a 3-year research project on The Impacts of the Criminal Justice Process on Ngāti Kahungunu. This year hui were held in Wairoa, Heretaunga, Wairarapa & Wellington. A report on these findings from these hui is currently being worked on.

This research will form the basis of an innovative strategic approach to address the impacts of the criminal justice process on Ngāti Kahungunu Whānau whānui by informing the development of a Kahungunu Social Harm Prevention Strategy. There has also been some work on developing and shaping a Hawke's Bay Community Justice Panel which is currently being piloted in Christchurch. This is a pre judiciary community model supported by the Ministry of Justice, with the intent to hold these panels at and with the support of the Pukemokimoki Marae whānau, based in Napier.

## **Tū Mai Rā - Kahungunu & Hawke's Bay District Health Board Māori Health Strategy**

This strategy is overseen and supported by the Hawke's Bay District Health Board Māori Relationship Board who are made up of Kahungunu mandated representatives co-Chaired by Ngāhiwi Tomoana – Ngāti Kahungunu Iwi Inc. Chairman and Tatiana Cowan-Greening.

The current work being undertaken is the Tū Mai Rā 2013 – 2016 Work plan and the Hawke's Bay District Health Board – Ngāti Kahungunu Iwi Inc. Memorandum of Understanding Review.

We would like to acknowledge the mahi of Māori Relationship Board member Ngatai Huata, for her insight and work on the Hawke's Bay District Health Board vision, values and behaviours document.

## **Ā mātau uarā, me tō mātau whanonga - Our Values/Behaviours**

**Tauwhiro** – delivering high quality care to patients and consumers

**Rāranga te tira** – working together in partnership across the community

**He kauanuanu** – showing respect or each other, our staff, patients and consumers

**Ākina** – continuously improving everything we do

*I would like to take this opportunity to thank and acknowledge the advocacy and hard work provided by all our whānau members of the four Strategic Forums and for their dedication and commitment to the kaupapa of Te Ara Toiora – Kahungunu Living Longer, Tihei Kahungunu!*

**Jenny Smith**  
Director

# Benefits to Members

## COMMUNICATIONS

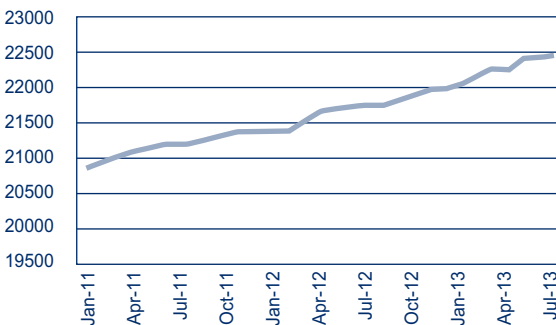
Ngāti Kahungunu Iwi Incorporated has developed a number of ways to communicate with our membership. The Annual Report is one way we communicate with our people, and it is a constitutional requirement to provide our members with a full annual report. Our Communication Strategy provides opportunities for people to be informed and for whānau to have their say. Facebook and Twitter are new features that the iwi has engaged in to increase our information being disseminated out to our people. This year the bi monthly Hoearā newsletter has become a four seasonal edition with an electronic website based calendar of events which allows whānau to keep abreast of iwi activities and opportunities. Be informed. Contact our office for more information of the various ways you can be informed.

## REGISTRATIONS

This year we had 845 new registrations, an increase of 204 more than last year. We currently have a total of 22,444 registered members. Heretaunga and Wairoa Taiwhenua continue to lead in the number of people who register with the iwi and they made up 55.9% of the new members who registered in this financial year. We are always looking to improve the way we communicate with our people and it is important that the registration database is kept up to date. Please contact the office to check your details are up to date.

*Members Entered between 01/07/2012 –30/06/2013*

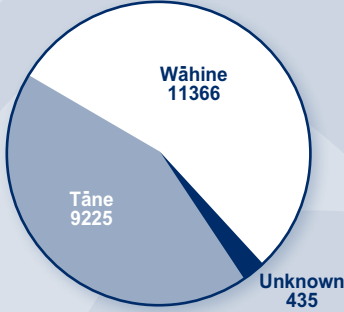
Ngā mata-ā-waka	10
Heretaunga	297
Tāmaki-nui-a-Rua	19
Tamatea	41
Wairarapa	82
Te Whanganui-a-Orotū	78
Wairoa	182
Ngā Parirau o te Ika	24
Te Waipounamu	12
Te Ūpoko o te Ika	75
Te Raki/Tāmaki-makau-rau	25
Taurahere o te ao	1
<b>Grand Total</b>	<b>845</b>



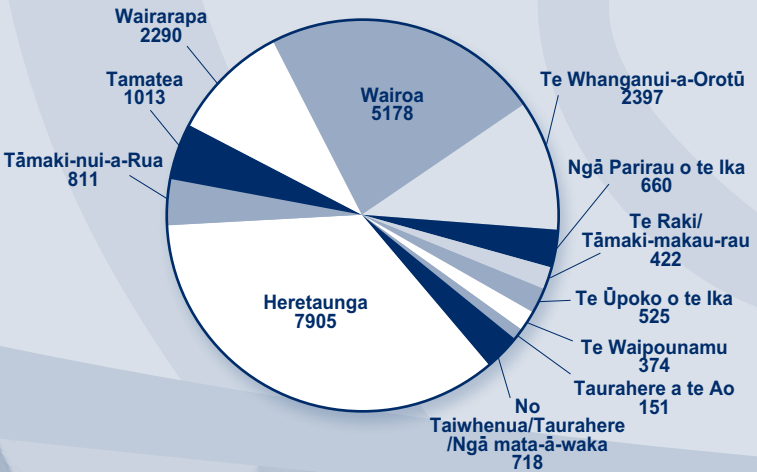
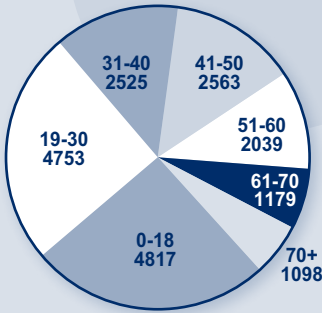
# Benefits to Members

## Kahungunu - Statistics of Registered Tangata Whenua Members

Gender



Ages



Kerrin Fair  
Registration Database Administrator



# Benefits to Members

## EVENTS

Ngāti Kahungunu Iwi Incorporated strives to produce and sponsor events that strengthen cultural and communal links with a whole-of-Ngāti Kahungunu approach.

### **Iron Māori 2012, Ahuriri, Napier “Movement of the People”**

Over 2,000 registered participants swam, biked and ran in this life changing experience cheered on by thousands of supporters. At the award ceremony they still had energy to laugh and dance to “Gangnam Style”. Ngāti Kahungunu Iwi is proud to be a sponsor of this inspiring event started by Heather and Wayne Skipworth, Missy and George Mackey with Lee Grace and partner Kiri Bird.

### **Waiata Māori Music Awards 2012, Hawke’s Bay Opera House, Hastings**

Staged in September at the Hawke’s Bay Opera House, Ngāti Kahungunu Iwi is proud to sponsor this national event that offers a superb platform to honor the achievements of Māori composers and performing artists in fourteen categories from Best Traditional Māori album to Best Māori Roots Reggae Album. The event is produced by Hastings based Waiata Māori Music Awards Trust.

### **2012 Kahungunu Sports Awards, AW Parson Stadium, Waipukurau**

Hosted in November by Tamatea Taiwhenua, this popular flagship event garnered positive feedback from guests who enjoyed the dance antics of Jgeeks and our Unison Cafe celebrity speakers K1 Kayak gold medallist Lisa Carrington and kiwi league turned TV personality Wairangi Koopu. Israel Dagg won the Kahungunu Sportsperson of the Year trophy as a member of the 2012 All Blacks.

### **Kahungunu AGM Sports Day 2012, Splash Planet, Hastings**

Superb weather greeted a fantastic turnout of 4,500 people passing through the turnstiles at Splash Planet, their biggest attendance for 2012. It was wonderful to welcome 6 busloads of families from Wairarapa, Tāmaki-nui-a-Rua and Wairoa. Tāmaki-nui-a-Rua once again took out the tug of war.

### **2013 Waitangi Day, Hawke’s Bay Sports Park, Hastings**

Marae kapa haka was a popular addition attracting five teams from Tamakinui a Rua, Te Whanganui-a-Orotū and Heretaunga. Homai te Pakipaki winner Chad Chambers and sunshine reggae band Tommorow’s People were our guest performers. Touch, netball, volleyball, Ki Orahi and 3 on 3 basketball attracted their own crowds and the free health testing service supply to expectation.

### **Matariki 2013**

Māori new year celebrations were successfully staged by local volunteer organisers and we are grateful for their work. In Wairoa Sarah Rangī and Michelle Tahuri organised and raised funds for 7 days of Matariki activities in to an appreciative and loyal community. Hayden Hape and his events team in Tāmaki-nui-a-Rua built on their reputation by mounting another wonderful family festival that packed out the Dannevirke Town Hall. They too did a great job raising funds locally for their event. In Wairarapa Kyrā Hill and taiwhenua manager PJ Devonshire put together a wonderful night showcasing exceptional local talent. They successfully raised money from grants and sponsorship. George Reti did an excellent job to organise a week of activities in Te Whanganui-a-Orotū and Tāngoio Marae mounted a special whānau night with fireworks on behalf of Ngāti Kahungunu. Robert Ropiha pulled together a great line up for Tamatea at short notice and Flaxmere’s Matariki defied the odds attracting a huge attendance on a bitterly cold and windy night.

### **Our Events Commitment**

By Kahungunu, For Kahungunu, For Everyone, Forever

**Te Rangi Huata  
Events Manager**

# Benefits to Members

## SPONSORSHIP

Cultural and sporting pursuits are an important aspect of personal, whānau, hapū and iwi development. For this purpose Ngāti Kahungunu Iwi Incorporated allocates a limited amount of funding toward sponsorship each year. Sponsorships are available year round except for the months of June and December.

Individual or Organisation	Name of event	Value
Waiata Māori Music Awards	National Waiata Māori Music Awards 2012	\$15,000.00
John Matthews	2012 National Manu Korero competitions	\$500.00
HB Leaders Circle	Hockey Black Sticks Sponsorship	\$15,000.00
Mataeus Marsh	NZ U17 Mixed Touch	\$500.00
Michael Nuku	2012 IVF Va'a World Sprint Champs in Canada	\$500.00
Ashton Robinson	NZ U17 Mixed Touch	\$500.00
Aaliyah Ah Kiong	NZ U17 Womens Basketball	\$500.00
Nga Taonga Taakaro Ki Te Matau-a-Māui	National Secondary Schools Ki O Rahi	\$1,000.00
Tangoio Marae Committee	Governor Generals visit to Tangoio Marae	\$5,000.00
Waimārama Māori Committee	Waka Toi Māori Queen Awards Ceremony	\$1,000.00
Kahungunu ki Tāmaki-makau-rau	Kahungunu ki Tāmaki-makau-rau Kaumātua Ball	\$500.00
Sport Hawke's Bay Wairoa	Wairoa Sports Awards	\$322.00
Ngāti Kahungunu Rūnanga Wahine	Taumata Mareikura Pumaomaomao Summit	\$3,100.00
Kresna Crouch	NZ U15 Pacific Basketball	\$500.00
Te Whakakotahitanga Kōhanga Reo	Commemorating the Contribution of Kaumātua	\$500.00
Maquisha Toheriri	HB Under 15 Girls Softball - Wellington	\$500.00
Hone-Paora Hoepo-Scott	NZ Invitational swimming meet in Australia	\$1,000.00
Kohupātiki Marae Committee	Centennial Celebrations of Tanenuiarangi Whare	\$1,000.00
Haeata Ocean Sports Inc.	National Waka Ama Championships	\$1,000.00
Te Rerenga Kotuku Culture Club	National Kapahaka Te Matatini 2013	\$1,000.00
Hawke's Bay Touch	HB U17 Boys Touch	\$500.00
Mystique Paul	NZ Touch Nationals U15's Papamoa	\$250.00
Ashleigh Ahipene	Amateur World Muaythai Tournament in Russia	\$500.00
Ruanui Winitana	NZ Academy U13 Boys Basketball	\$500.00
Patti Grogan	2013 International Judo Union Continental Champs, Australia	\$500.00
HB Māori Teachers Association	2013 Te Matau-a-Māui Secondary Schools Kapa Haka Comp	\$1,000.00
Waipatu Marae	2013 'Kai on the Marae'	\$250.00
Madison Gaiger-Grove	2013 World Championships of Performing Arts	\$500.00
Mereana Makea	NZ Development Girls' Basketball Team - International series	\$500.00
He Toa Takitini	He Toa Takitini Whare Korero	\$1,000.00
Jordan Schuster	NZ Junior Mens Volleyball	\$500.00
Bernice Madia Adams	Kura Reo Sponsorship	\$250.00
Mahinaarangi Huata-Harawira	Kura Reo Sponsorship	\$250.00
Toni Huata	Kura Reo Sponsorship	\$250.00
Tāne-rore Rakatairi	Kura Reo Sponsorship	\$250.00
Huara Kaukau	Kura Reo Sponsorship	\$250.00
Matewai Timu-Fosio	Kura Reo Sponsorship	\$250.00
Charissa Eparaima	Kura Reo Sponsorship	\$250.00
Grace Hawkins	Kura Reo Sponsorship	\$250.00
Stewart Edwards	Kura Reo Sponsorship	\$250.00
Moeroa Edwards	Kura Reo Sponsorship	\$250.00
Crystal Edwards	Kura Reo Sponsorship	\$250.00

# Benefits to Members

Individual or Organisation	Name of event	Value
Helena Ferris	Kura Reo Sponsorship	\$250.00
Ewan Pohe	Kura Reo Sponsorship	\$250.00
Georgina Pohe	Kura Reo Sponsorship	\$250.00
Anahera Pohe	Kura Reo Sponsorship	\$250.00
Leoni Turi	Kura Reo Sponsorship	\$250.00
Mereaira Hesketh	Kura Reo Sponsorship	\$250.00
Maioha Allen	Kura Reo Sponsorship	\$250.00
Lee Kershaw Karaitiana	Kura Reo Sponsorship	\$250.00
Haani Huata	Kura Reo Sponsorship	\$250.00
Maui Cooper-Ederveen	Kura Reo Sponsorship	\$250.00
Erena Cooper-Ederveen	Kura Reo Sponsorship	\$250.00
Mamaengaroa Cooper-Ederveen	Kura Reo Sponsorship	\$250.00
Rangijaanu Rolls	Kura Reo Sponsorship	\$250.00
Rapata Turner	Kura Reo Sponsorship	\$250.00
Raiha Huata	Kura Reo Sponsorship	\$250.00
Puhiwahine Nuku	Kura Reo Sponsorship	\$250.00
Jorian Tangaere	Kura Reo Sponsorship	\$250.00
Alexia Greening	Kura Reo Sponsorship	\$250.00
Georgina Taoho	Kura Reo Sponsorship	\$250.00
Misty Ratima	Kura Reo Sponsorship	\$250.00
Olivia Kaimoana	Kura Reo Sponsorship	\$250.00
Liz Kereru	Kura Reo Sponsorship	\$250.00
Alex Ann Edwards	Kura Reo Sponsorship	\$250.00
Parekura Pewhairangi	Kura Reo Sponsorship	\$250.00
Te Okiwa McLean	Kura Reo Sponsorship	\$250.00
Tuhoe Huata	Kura Reo Sponsorship	\$250.00
Tiahuia Ropitini	Kura Reo Sponsorship	\$250.00
Marama Fox	Kura Reo Sponsorship	\$250.00
Whatahoro Fox	Kura Reo Sponsorship	\$250.00

## SCHOLARSHIPS

Ngāti Kahungunu Iwi Incorporated acknowledges that education is the key to personal, whānau, hapū and iwi development. The iwi provides educational funds to its iwi members to encourage and recognize the pursuit of academic excellence. For this purpose the board has allocated limited funds to support Ngāti Kahungunu taura. Applications for scholarships will open on the 3rd of February 2014 and close on the 3rd May 2014. In the 2012-2013 year we received 130 scholarship applications. Thirty (30) taura received the General Scholarship worth \$500.00 each and three (3) taura received the Research Scholarship worth \$5000.00.

This year Ngāti Kahungunu Iwi Incorporated provided Internship opportunities in partnership with the Hawke's Bay District Health Board Turuki programme, Victoria University and Massey University. This saw a number of applicants indicate their interest in working within an iwi environment to help develop the iwi strategies. During the summer months, five interns joined the staff within the tari to participate in various mahi.

## Scholarship recipients

Name	Area of Study	Amount
Jeffery Bartlett	Graduate Diploma in Designed Environments	\$500.00
Aretha Edwards	Bachelor of Arts – Māori	\$500.00
Alexia Greening	Diploma Teaching Secondary School	\$500.00
Mary Te Kuini Jones	Masters in Business Administration (RESEARCH)	\$5,000.00

# Benefits to Members

Name	Area of Study	Amount
Diana Norling	Post Graduate Diploma Education	\$500.00
Jordan Gabrielle Pearce	Bachelor of Arts - Majoring in Psychology	\$500.00
William Pere	Diploma in Public Health, Majoring in Māori Health.	\$500.00
Michael Tawhai	Bachelor of Māori Development	\$500.00
Leoni Turi	Pou Tāhū Whakaakoranga	\$500.00
Tira Wainohu	Trades Level 2 and 3	\$500.00
Hamuera Pere	Bachelor of Medicine, Bachelor of Surgery	\$500.00
William Grogan	Bachelor of Forestry Science	\$500.00
Daniel Blair Fake	Bachelor of Sport and Exercise	\$500.00
Adell Gilchrist	Bachelor of Science – Biology	\$500.00
Horiana Irwin-Easthope	Master of Laws (RESEARCH)	\$5,000.00
Shannon Martin	Doctorate of Clinical Psychology (RESEARCH)	\$5,000.00
Brendon Tangiora	Bachelor Iwi Environmental Management	\$500.00
Janine Adams	Bachelor of Education & Mātauranga Māori	\$500.00
Lucy Barber	Bachelor of Medicine and Surgery	\$500.00
Asti Jamin Lee Grard	Bachelor of Medicine and Science	\$500.00
Leilani Naera	Bachelor of Arts and Bachelor of Computer Graphics	\$500.00
Ricki-Lea Aitchison	Bachelor of Medicine, Bachelor of Surgery	\$500.00
Cheri Henare-Thompson	Bachelor of Social Services	\$500.00
Mahana Hunkin	Bachelor of Arts - Journalism (HONS)	\$500.00
Hayden Jacobs	Potuarongo Kaitiakitanga Pūtaiao	\$500.00
Kate Muir	Bachelor of Forestry Science	\$500.00
Michael Owen	Bachelor of Commerce	\$500.00
Alexandra Tully	Dietitian	\$500.00
Michael Whaanga	Bachelor of Social Worker	\$500.00
Sarah Wilson	Bachelor of Arts (HONS) Political Science	\$500.00
Victoria Wilson	Bachelor of Law/ Bachelor of Arts	\$500.00
Hoani Hawaikirangi	Bachelor of Arts – Māori	\$500.00
Kararaina Te Ira	Masters of Cultural Material Conservation	\$500.00
Raiha Huata	Internship 2013 – Te Reo Strategy	\$2,500.00
Jessica Wilson	Internship 2013 – IT Strategy	\$2,500.00
Gabrielle Goodin	Internship 2013 – Fisheries Strategy	Victoria Uni
Wai Taumata - Baker	Internship 2013 – Health and Wellbeing	HBDHB Turuki
Brea Pothan	Internship 2013 – Creative Arts and Design	Massey Uni

## Kahungunu Asset Holding Company Ltd Chairman's Report

**KAHUNGUNU, HE TANGATA AHUWHENUA,  
MŌHIO KI TE WHAKAHAERE I NGĀ MAHI O UTA  
ME Ō TAI**

### TIHEI KAHUNGUNU!

It is my pleasure to provide a report of Kahungunu Asset Holding Company Limited (KAHC) results for the year ended 30 of June 2013.

### Background

Kahungunu Asset Holding Company Limited was established in 2005 by Ngāti Kahungunu iwi Incorporated (NKII) to receive and manage the Treaty of Waitangi Fisheries settlement on behalf of Ngāti Kahungunu.



# Kahungunu Asset Holding Company Ltd Chairman's Report

## NATURE OF BUSINESS

The business of the KAHC is to receive and manage the Fisheries Settlement assets and other commercial assets of NKII, for maximum commercial benefit. Each year the company agrees its Statement of Intent with NKII Board, setting the strategic direction and expected returns for the coming year.

The past year has been interesting in that we have experienced significant changes to the Directors of the Kahungunu Asset Holding Company (KAHC) Board which is the responsibility of the NKII Board. In addition we lost the services through resignation of Aramanu Ropiha who had been the General Manager of the Company since inception. The Board acknowledges her dedicated service over that period of time.

We acknowledge the long and dedicated services to the Company of Peter Brierley and the contribution of Eboni Waitere, Rawinia Kamau and Te Horipo Karaitiana. Meka Waitiri was an interim appointment for a short time prior to becoming the MP for Ikaroa Rawhiti.

The day to day business of the Company is being managed with the contracted support of the NKII Administration Shared Services. Anita Broughton has assisted with financial management and this has ensured the integrity of the Company records is maintained.

With myself as Chairperson, the Board now comprises Paora Ammunson, Hayden Hape, Trevor Moeke, Mike Paku and Taine Randell.

We are confident that the experience and widespread business skills of the current Directors combined with others within Kahungunu will have a positive outcome for the Company.

## TAUTANE STATION

The significant event for the year was without doubt the purchase of Tautāne Station at Cape Turnagain/Herbertville, which is being leased to Taratahi – a farm training entity based at Masterton. KAHC Directors worked very closely with the NKII Board over a period of eight months in negotiating the purchase. Ultimately the decision to purchase the approximate ten thousand acre property was made by the KAHC Board and sanctioned by the NKII Board. Celebration of the purchase was well attended at both Porangahau and at the Tautāne property.

## FISHERIES SETTLEMENT ASSET

The key assets owned by KAHC include fishing quota, shares in Aotearoa Fisheries Limited (who in turn own 50% of Sealord and a range of other seafood interests), shares in Napier Mussels Limited, shares in Fiordland Lobster Company Limited and cash. Specifically, the company has received the following settlement assets to manage on behalf of Ngāti Kahungunu in accordance with the Māori Fisheries Act 2004

- August 2006: 162,942,485 quota shares valued at \$9,436,871
- August 2006: 7874 income shares in Aotearoa Fisheries Ltd, valued at \$19,874,733
- July 2010: 501,527,278 quota shares valued at \$16,933,500,<sup>2</sup>
- September 2012: Aquaculture pre-commencement space settlement cash \$1,499,845
- Cash of \$2,030,106

<sup>1</sup> The shares in AFL and Quota received under the Fisheries Asset Settlement process have been included in the accounts at the value established by Te Ohu Kaimoana on transfer.

<sup>2</sup> CRA3 quota valued at \$1,617,057 is reserved for settlement with Rongomaiwahine Iwi Trust from this settlement.



# Kahungunu Asset Holding Company Ltd Chairman's Report

## COMPANY AIM: MAXIMUM SUSTAINABLE RETURNS

Objectives: The Company has the following objectives:

- Build intergenerational wealth for Ngāti Kahungunu
- Maximise the financial return on the assets
- Build a sustainable capital base for the future.

## FINANCIAL PERFORMANCE

The operating profit of the company has steadily improved each year as has the retained earnings and improvement in equity as shown in the tables below.

### Net Profit 2007-2013

30-Jun-07	\$1,769,233
30-Jun-08	\$2,458,049
30-Jun-09	\$2,028,815
30-Jun-10	\$2,733,836
30-Jun-11	\$3,409,582
30-Jun-12	\$3,872,548
<b>30-Jun-13</b>	<b>\$5,372,656</b>

### Retained Earnings 2007-2013

30-Jun-07	\$344,051
30-Jun-08	\$1,402,100
30-Jun-09	\$2,030,915
30-Jun-10	\$3,364,748
30-Jun-11	\$4,983,779
30-Jun-12	\$7,216,327
<b>30-Jun-13</b>	<b>\$10,948,984</b>

### Improvement in Equity 2008-2013

30-Jun-08	\$33,742,051
30-Jun-09	\$34,370,866
30-Jun-10	\$52,222,903
30-Jun-11	\$53,992,484
30-Jun-12	\$57,724,877
<b>30-Jun-13</b>	<b>\$61,457,534</b>

After payment of the \$1,640,000 dividend to Ngāti Kahungunu Iwi Incorporated, we are pleased to report an increase in equity of \$3,732,657 for the year ended 30 June 2013.

## FINANCIAL PERFORMANCE BY ASSET CLASS

### Shares in Aotearoa Fisheries Ltd (AFL)

The company has received, as part of the Fisheries Settlement, 7,874 shares in AFL. This represents a 6.3% holding in AFL. During the year the company has received a bonus issue of 7,874 shares taking the company's holding in AFL to 15,478 shares.

KAHC received total income from AFL of \$2,424,038. This comprised of a gross dividend of \$534,278 along with Māori Authority tax credits from the bonus share issue of \$1,889,760.

The net book value (NBV) of the KAHC's shareholding in AFL as disclosed in its Annual Report<sup>3</sup> was \$25,456,767, an improvement in capital value of \$6,097,308 since the shareholding was transferred.

# Kahungunu Asset Holding Company Ltd Chairman's Report

## Aotearoa Fisheries Shares NBV

30-Jun-08	19,359,459
30-Jun-09	20,043,676
30-Jun-10	22,547,575
30-Jun-11	24,342,565
30-Jun-12	24,969,398
<b>30-Jun-13</b>	<b>25,456,767</b>

## Shares in Fiordland Lobster Company Ltd

The company owns 131,590 shares in Fiordland Lobster Company Limited (FLC). This represents a 5.74% holding in that company. These shares have been included in KAHC accounts at cost. The net book value of the company's shareholding in FLC as disclosed in its Annual report as at 31 March 2013 was \$5,087,409 (31/3/12: \$4,297,351).

Taine Randell has been appointed to the Fiordland Lobster Company Board of Directors of which KAHC is a major shareholder in addition to holding substantial crayfish quota.

This investment has managed a return on investment of 14%.

## Fiordland Lobster Dividend

30-Jun-08	\$45,000
30-Jun-09	\$91,431
30-Jun-10	\$120,590
30-Jun-11	\$144,749
30-Jun-12	\$159,224
<b>30-Jun-13</b>	<b>\$159,224</b>

The capital value of the shares has improved by \$3,951,345 over 6 years.

## Fiordland Lobster NBV shares

30-Jun-08	1,136,064
30-Jun-09	1,788,061
30-Jun-10	2,658,504
30-Jun-11	3,733,886
30-Jun-12	4,297,351
<b>30-Jun-13</b>	<b>5,087,409</b>

## Quota - ACE sales

The bulk of KAHC's earnings from the sale of Annual Catch Entitlement (ACE) derive from the quota. Employing our investment strategies the company has managed a return on the quota value of 12%.

## ACE Sales

30-Jun-07	1,983,963
30-Jun-08	2,755,961
30-Jun-09	2,551,163
30-Jun-10	3,163,240
30-Jun-11	3,153,147
30-Jun-12	3,300,792
<b>30-Jun-13</b>	<b>3,276,042</b>

<sup>3</sup> For information on AFL visit their website <http://afl.maori.nz/>

# Kahungunu Asset Holding Company Ltd Chairman's Report

## Shares in Napier Mussels Ltd

KAHC received 40% shareholding in Napier Mussels Ltd (NML) from Ngāti Kahungunu Iwi Incorporated. In the period the KAHC has owned this shareholding in NML, it has not been viable to develop the farm but it was important to maintain the resource consents and the value of the marine farming space. The company now holds 50% ownership of Napier Mussels Limited. The company acquired a further 10% interest during the year at a cost of \$36,250. This amount has been written off due to impairment in value. The shares and advances totalling \$76,375 (30/6/2012: \$40,125) are recorded at nil value as they do not currently have a realisable value.

## Shares in Area 2 Finfish Management Company Limited

The company acquired 1 share in Area 2 Finfish Management Company Limited (Area2) during the year. This represents a 2.56% holding in that company. These shares have been included at cost. The net book value of the company's share in Area2 is disclosed in its Annual report at 31 March 2013 was \$570 (31/3/2012: Nil).

## Shares in Trident Systems General Partner Limited

The company acquired 3,705 shares in Trident Systems General Partner Limited (Trident) during the year. This represents a 1.18% holding in that company. These shares have been included at cost. The net book value of the company's share as disclosed in its annual report as 31 July 2013 was \$285 (31/3/2012: Nil).

## Shares in KAHC Investments Limited

The company owns 100 shares in KAHC Investments Limited. This represents a 100% holding. This company has not traded during the year.

## CONSTITUTIONAL REPORTING

During the year to June 2013 there have been no:

- sales or exchanges of Settlement Quota;
- transactions with Settlement Quota that have resulted in a registered interest by way of caveat or mortgage being placed over the quota;
- interests registered against the Settlement Quota shares;
- sales or exchanges or acquisitions of AFL Income Shares,
- formal joint ventures that conduct business using the Settlement Quota or Income Shares

Please note, changes were made to the Ngāti Kahungunu Iwi Incorporated Constitution and ratified at the last NKII AGM held on the 24th November 2012 at the Splash Planet Conference Centre in Hastings.

## Going forward

It is certainly the intention of KAHC that a close working relationship with the NKII Board is nurtured.

While there have been significant challenges for us with our deep-water portfolio and increased expense in staff and board restructuring costs, these have been more than offset by prudent and successful management of our other assets.

A further positive from this year was the successful quota lease negotiations with new and existing partners who are either Kahungunu fishers or Kahungunu based. We look forward to these ongoing relationships.

Combined with the purchase of the Tautāne property and ongoing management of the business of the Company, the overall result for the past year is pleasing.



**Rangī Manuel**  
Chairman

# Statement of Financial Performance

FOR THE YEAR ENDED 30 JUNE 2013

		Consolidated*		Parent*	
		2013 \$	2012 \$	2013 \$	2012 \$
<b>INCOME</b>					
Administration and Other Operating		1,116,652	535,263	649,507	193,318
Hi Ika income		3,382,041	3,468,506	40,166	80,392
Matauranga		265,528	88,789	265,528	88,789
Hauora		166,133	248,385	166,133	248,385
Mauri Ora		92,871	123,179	92,871	123,179
Merchandising		1,235	1,223	1,235	1,223
Dividend		2,583,263	986,956	1,640,000	1,640,000
<b>Total Operating Income</b>	2	<b>7,607,723</b>	<b>5,452,301</b>	<b>2,855,440</b>	<b>2,375,286</b>
<b>LESS EXPENDITURE</b>					
Administration and Other Operating		1,158,304	993,187	673,393	703,919
Hi Ika		541,407	693,882	173,558	266,081
Communication		92,713	90,988	92,713	90,988
Matauranga		439,732	273,236	439,732	273,236
Hauora		236,941	184,777	236,941	184,777
Mauri Ora		326,597	506,053	326,598	506,053
Governance		939,540	605,600	772,655	442,296
<b>Total Expenses</b>	3	<b>3,735,233</b>	<b>3,347,723</b>	<b>2,715,589</b>	<b>2,467,350</b>
<b>Net Surplus/(Deficit) for year</b>	24	<b>3,872,489</b>	<b>2,104,578</b>	<b>139,852</b>	<b>(92,064)</b>

\* Consolidated means group (refer to note 1 on page 27). Parent means Ngāti Kahungunu Iwi Incorporated.

# Statement of Movements In Equity

FOR THE YEAR ENDED 30 JUNE 2013

<b>Opening Equity as at 1 July</b>		59,646,629	56,282,206	4,121,754	4,453,818
Net Surplus/Deficit for the year		3,872,489	2,104,578	139,852	(92,064)
<b>Total recognised revenues &amp; expenses</b>		<b>3,872,489</b>	<b>2,104,578</b>	<b>139,852</b>	<b>(92,064)</b>
<b>Contributions from/ Distributions to owners</b>					
Aquaculture Settlement	4	-	1,499,845	-	-
Less: Taiwhenua/ Taurahere distribution	5	(230,000)	(240,000)	(230,000)	(240,000)
		(230,000)	1,259,845	(230,000)	(240,000)
<b>Sub total</b>	24	<b>3,642,489</b>	<b>3,364,423</b>	<b>(90,148)</b>	<b>(332,064)</b>
<b>Closing Equity as at 30 June</b>	6	<b>63,289,118</b>	<b>59,646,629</b>	<b>4,031,606</b>	<b>4,121,754</b>

This statement should be read in conjunction with the accompanying notes.

# Statement of Financial Position

AS AT 30 JUNE 2013

	Consolidated		Parent		
	2013	2012	2013	2012	
	\$	\$	\$	\$	
<b>ASSETS</b>					
<b>NON CURRENT ASSETS</b>					
Motor vehicles & plant	7	605,473	213,059	597,624	173,209
Investment Properties	8	16,842,000	-	-	-
Intangibles	9	26,741,211	26,771,321	-	-
Investments & advances	10	22,546,219	21,328,585	2,200,000	2,200,000
<b>Total Non Current Assets</b>		<b>66,734,903</b>	<b>48,312,965</b>	<b>2,797,624</b>	<b>2,373,209</b>
<b>CURRENT ASSETS</b>					
Bank and cash	11	10,485,159	16,097,239	5,465,328	6,907,610
Debtors and Prepayments		2,216,667	462,571	222,279	106,160
Accrued income		426,876	399,121	25,952	119,980
Stock on hand	12	2,725	2,580	2,725	2,580
Settlement quota receivable	13	-	-	1,617,057	1,617,057
<b>Total Current Assets</b>		<b>13,131,427</b>	<b>16,961,511</b>	<b>7,333,342</b>	<b>8,753,387</b>
<b>TOTAL ASSETS</b>		<b>79,866,330</b>	<b>65,274,475</b>	<b>10,130,966</b>	<b>11,126,596</b>
<b>LIABILITIES</b>					
<b>CURRENT LIABILITIES</b>					
Creditors & Other Payables	14	821,333	409,643	343,479	1,786,639
Taiwhenua/Taurahere grants payable	5	50,429	157,929	50,429	157,929
Income in advance		256,070	274,799	256,070	274,799
Provisions	16	5,219,380	4,785,475	5,219,380	4,785,475
<b>Total Current liabilities</b>		<b>6,347,212</b>	<b>5,627,846</b>	<b>5,869,358</b>	<b>7,004,842</b>
<b>TERM LIABILITIES</b>					
Loans Payable	17	10,230,000	-	230,000	-
<b>Total Term Liabilities</b>		<b>10,230,000</b>	<b>-</b>	<b>230,000</b>	<b>-</b>
<b>TOTAL LIABILITIES</b>		<b>16,577,212</b>	<b>5,627,846</b>	<b>6,099,358</b>	<b>7,004,842</b>
<b>EQUITY</b>					
Retained earnings		13,630,568	9,988,079	2,681,607	2,771,754
Reserve fund		1,350,000	1,350,000	1,350,000	1,350,000
Fisheries settlement assets reserve		48,158,000	48,158,000	-	-
Emissions trading scheme reserve		150,550	150,550	-	-
<b>TOTAL EQUITY</b>	6	<b>63,289,118</b>	<b>59,646,629</b>	<b>4,031,607</b>	<b>4,121,754</b>
<b>TOTAL LIABILITIES AND EQUITY</b>		<b>79,866,330</b>	<b>65,274,475</b>	<b>10,130,966</b>	<b>11,126,596</b>

These financial statements were authorised for issue by the board on 17 October 2013.



Chairman - Ngahiwi Tomoana



Board Representative - Haami Hilton

This statement should be read in conjunction with the accompanying notes.

# Notes to and Forming Part of the Financial Statements

FOR THE YEAR ENDED 30 JUNE 2013

## 1 STATEMENT OF ACCOUNTING POLICIES

### Reporting Entity

Ngāti Kahungunu Iwi Incorporated (the society) is an incorporated society established under the Incorporated Societies Act 1908.

Ngāti Kahungunu Iwi Incorporated has several subsidiary entities.

The reporting entity comprises the society and consolidated group of the society and its subsidiaries (the group).

The financial statements are prepared under generally accepted accounting principles.

### Measurement Base

The accounting principles recognised as appropriate for the measurement and reporting of earnings and financial position on an historical cost basis are followed.

### Differential Reporting

The group qualifies for differential reporting as it is not publicly accountable, and not large in size. The group has taken advantage of all available differential reporting exemptions except for FRS 19 Accounting for GST.

### Specific Accounting Policies

The specific accounting policies which materially affect the measurement of financial performance and financial position have been applied.

#### (a) Consolidation

The purchase method of consolidation has been applied in preparing the consolidated financial statements. All inter entity transactions and balances have been eliminated on consolidation.

#### (b) Operating Revenue

This represents revenue earned from the sale of the group's products and services, investment income on the group's investments, and income earned on contracts for services, net of any credit allowed. Project and contract related income is recorded on an accruals basis, consistent with the degree of project or contract completion.

#### (c) Depreciation

Depreciation has been calculated using rates permitted by the Income Tax Act 2007.

Vehicles	31% DV
Plant & Computer Equipment	11.4-60% DV

#### (d) Income Tax

The group is registered as a charitable entity under the Charities Act 2005 so qualifies for an income tax exemption under the Income Tax Act 2007.

#### (e) Fixed Assets Property, plant and equipment

Property, plant and equipment are stated at cost less accumulated depreciation.

#### (f) Investments and Advances

Investments and advances are recorded at cost or estimated net realisable value if there has been a permanent diminution in value. The shares in Aotearoa Fisheries Limited have been included at the value established by Te Ohu Kaimoana on transfer.

#### (g) Quota and Shares Intangibles

##### Fishing Quota

Quota received by the group as part of the Fisheries Asset Settlement has been recorded at the value placed on it for settlement purposes. Quota purchased has been recorded at cost. Quota is regarded as having an indefinite useful life because there is no foreseeable limit to the period over which it is expected to be useful. Quota is therefore not amortised. Instead, it is tested annually for impairment.

##### Emissions Trading Scheme Units

Emissions Trading Scheme (ETS) units acquired by the group are initially recognised at the value established by the Ministry for the Environment. ETS units are regarded as having an indefinite useful life because there is no foreseeable limit to the period over which they are expected to be useful. ETS units are therefore not amortised. Instead, they are tested annually for impairment. Impairment losses are reflected in the Statement of Financial Performance.



# Notes to and Forming Part of the Financial Statements

FOR THE YEAR ENDED 30 JUNE 2013

**(h) Inventory**

Inventories are valued at the lower of cost and net realisable value.

**(i) Debtors**

Debtors are stated at their estimated net realisable value.

**(j) Taiwhenua/Taurahere distribution**

Taiwhenua/Taurahere distributions are recorded as a movement in equity at the time the distributions are received by these organisations on behalf of the members.

**(k) Investment Property**

Investment Property has initially been recorded at cost. Depreciation is not charged on investment property. Revaluation gains on such property are recognised in the Statement of Financial Performance. No Investment property is held under operating lease.

**Changes in Accounting Policies**

There have been no changes in the accounting policies during the year. All policies have been consistently applied.

2 INCOME	Consolidated		Parent	
	2013	2012	2013	2012
	\$	\$	\$	\$
Income includes;				
Dividends	2,583,263	986,956	1,640,000	1,640,000
Interest Income	446,056	434,610	60,312	92,666
Emission Trading	-	-	-	-
Government Grants	-	390,853	-	390,853
<b>3 EXPENSES</b>				
Expenses include;				
Depreciation	84,300	82,997	81,216	75,107
Bad and doubtful debts	-	12,174	-	12,174
Audit fees	28,325	23,261	16,167	14,293
Board member honoraria/ committee fees	274,900	287,918	178,234	187,822
Donations/Koha	14,590	10,560	14,590	10,560
Loss on sale of assets	372	8,608	-	17,407
Impairment of Emissions	-	-	-	-
Trading Scheme NZ Units	30,110	109,600	-	-
Rent	68,913	69,200	60,692	60,911

**4 FISHING ASSET SETTLEMENT**

In accordance with the Māori Fisheries Act 2004, Kahungunu Asset Holding Company has received fishing settlement assets to manage on behalf of Ngāti Kahungunu Iwi. In July 2009 the company received additional settlement of fishing quota, valued at \$15,316,443 by Te Ohu Kai Moana at the date of transfer, plus cash totalling \$320,761 of which \$119,000 was paid to Ohu Tiaki O Rangitane Te Ika A Maui Trust and Te Atiawa ki te Upoko O Te Ika A Maui Potiki Trust to gain agreement on Southern boundary (net settlement \$15,518,204). In 2012, Kahungunu Asset Holding Company Ltd received an aquaculture settlement of \$1,499,845.

**5 TAIWHENUA /TAURAHERE GRANTS PAYABLE**

The board requires certain criteria to be met prior to payments of grants. The expectation is that each Taiwhenua and Taurahere can fulfil the criteria.

# Notes to and Forming Part of the Financial Statements

FOR THE YEAR ENDED 30 JUNE 2013

6 EQUITY	Consolidated		Parent	
	2013	2012	2013	2012
	\$	\$	\$	\$
Opening Balance				
- Retained earnings	9,988,079	8,123,501	2,771,755	3,103,818
Net Surplus for the year	3,872,489	2,104,578	139,852	(92,063)
Less: Taiwhenua Distribution	(230,000)	(240,000)	(230,000)	(240,000)
Less: Transfer to Emissions Trading Scheme	-	-	-	-
Less: Transfer to Reserve Fund	-	-	-	-
Closing balance Retained earnings	13,630,568	9,988,079	2,681,607	2,771,755
Opening Balance Reserve Fund	1,350,000	1,350,000	1,350,000	1,350,000
Add: Transfer from Retained earnings	-	-	-	-
Closing Balance Reserve Fund	1,350,000	1,350,000	1,350,000	1,350,000
Opening Balance Fisheries Settlement Assets Reserve	48,158,000	46,658,155	-	-
Add : Aquaculture Settlement	-	1,499,845	-	-
Closing Balance Fisheries Settlement Assets Reserve	48,158,000	48,158,000	-	-
Emissions Trading Scheme Reserve	150,550	150,550	-	-
Add: Emissions Trading Scheme Allocations	-	-	-	-
Closing Balance Emissions Trading Scheme Reserve	150,550	150,550	-	-
<b>Total Equity</b>	<b>63,289,118</b>	<b>59,646,629</b>	<b>4,031,607</b>	<b>4,121,755</b>

## 7 MOTOR VEHICLES & PLANT

	Original Cost	Accum Depn	Closing Value
<b>Parent 2013</b>			
Vehicles	247,761	172,661	75,100
Waka Hourua	500,000	19,800	480,200
Plant & Machinery	141,108	98,784	42,324
	888,869	291,245	597,624
<b>Parent 2012</b>			
Vehicles	247,761	138,734	109,027
Plant & Machinery	135,477	71,295	64,182
	383,238	210,029	173,209
<b>Consolidated 2013</b>			
Vehicles	247,761	172,661	75,100
Waka Hourua	500,000	19,800	480,200
Plant & Machinery	156,968	106,794	50,173
	904,728	299,255	605,473
<b>Consolidated 2012</b>			
Vehicles	285,630	143,468	142,162
Plant & Machinery	151,239	80,342	70,897
	436,869	223,810	213,059

8 INTANGIBLES	Consolidated		Parent	
	2013	2012	2013	2012
	\$	\$	\$	\$
Investment Property				
- Tautane Station	16,842,000	-	-	-
Herbertville	16,842,000	-	-	-

Kahungunu Asset Holding Company Limited acquired the 3887 ha farming property 'Tautane Station' during the year. The property is being held as a long term investment and is not being actively farmed by the company. The property is leased for a ten year period to the Taratahi Agricultural Training Centre (Wairarapa) Trust Board at an annual rental of \$620,000.

# Notes to and Forming Part of the Financial Statements

FOR THE YEAR ENDED 30 JUNE 2013

9 INTANGIBLES	Consolidated		Parent	
	2013	2012	2013	2012
	\$	\$	\$	\$
Quota Shares	26,730,371	26,730,371	-	-
Emission Trading Scheme NZ Units	10,840	40,950	-	-
	<u>26,741,211</u>	<u>26,771,321</u>	<u>-</u>	<u>-</u>

In 2007 and 2010 the Kahungunu Asset Holding Company received quota as part of the Fisheries Settlement. Under the Māori Fisheries Act 2004, the company must not sell its settlement quota until two years after transfer from Te Ohu Kaimoana. After two years, the company can only sell its settlement quota to another iwi or to a member of the Te Ohu Kaimoana group. The quota has been recorded at the value placed on it for settlement purposes.

In addition to the settlements, further quota has been purchased and is recorded at cost.

Kahungunu Asset Holding Company Limited has also received an allocation of New Zealand units as part of the New Zealand Government implementation of the Emissions Trading Scheme. These units were initially recorded at the value established by the Ministry for the Environment. Subsequently they have been impaired down to a value approximating market value.

10 INVESTMENTS & ADVANCES	Consolidated		Parent	
	2013	2012	2013	2012
	\$	\$	\$	\$
<b>Bank Term Deposits</b>	1,217,596	-	-	-
<b>Investments in Subsidiaries</b>				
Shares TRONK (100%)	-	-	15,732	15,732
Shares Kahungunu Asset Holding Company (100%)	-	-	2,200,000	2,200,000
	<u>-</u>	<u>-</u>	<u>2,215,732</u>	<u>2,215,732</u>
<b>Shares in other companies</b>				
Aotearoa Fisheries Ltd	19,874,735	19,874,735	-	-
Fiordland Lobster Company	1,453,850	1,453,850	-	-
Napier Mussels Ltd (50%)	-	-	-	-
Trident Systems Limited	38	-	-	-
Area 2 Inshore Finfish Management Company Ltd	1	-	-	-
KAHC Investments Ltd	-	-	-	-
	<u>22,546,219</u>	<u>21,328,585</u>	<u>2,215,732</u>	<u>2,215,732</u>

#### Advances

Tamatea Taiwhenua	-	-	-	-
KAHC Investments Ltd	-	-	-	-
Napier Mussels Ltd	240,642	195,592	-	-
Less: Provision	(240,642)	(195,592)	-	-
	<u>-</u>	<u>-</u>	<u>-</u>	<u>-</u>

#### Amount due from/(to) Subsidiaries

TRONK	-	-	(15,732)	(15,732)
	<u>-</u>	<u>-</u>	<u>(15,732)</u>	<u>(15,732)</u>
	<u>22,546,219</u>	<u>21,328,585</u>	<u>2,200,000</u>	<u>2,200,000</u>

The Kahungunu Asset Holding Company has received, as part of the 2007 Fisheries Settlement, 7,874 shares in Aotearoa Fisheries Ltd (AFL). This represents a 6.3% holding in that company. The shares have been recorded at the value established by Te Ohu Kaimoana on transfer. During the year Kahungunu Asset Holding Company received a bonus issue of 7,874 shares taking the company's holding in AFL to 15,748 shares. Of these 7,874 are voting and 7,874 are non voting shares. The net book value of the Kahungunu Asset Holding Company's shareholding in AFL as disclosed in its Annual Report at 30 September 2012 was \$25,456,767 (2011: \$24,814,690). Under the Māori Fisheries Act 2004, the company must not sell its AFL shares until two years after

# Notes to and Forming Part of the Financial Statements

FOR THE YEAR ENDED 30 JUNE 2013

transfer from Te Ohu Kaimoana. After two years, the company can only sell its AFL shares to another iwi or to a member of the Te Ohu Kaimoana group.

The Kahungunu Asset Holding Company owns 131,590 ordinary shares in Fiordland Lobster Company (FLC). This represents a 5.74% holding in that company. These shares have been included at cost. The net book value of the Kahungunu Asset Holding Company's share holding in FLC as disclosed in its Annual Report at 31 March 2013 was \$5,087,409 (2012: \$4,297,351).

The initial transfer of shares in Napier Mussels Limited (NML) have been transferred to Kahungunu Asset Holding Company at nil value. Kahungunu Asset Holding Company Limited acquired a further 10% shareholding in NML during the year at a cost of \$36,250. The fully provisioned advance to NML remains in the society.

Shares in Aunty's Garden Limited were disposed of during the year and KAHC Investments Limited has not traded during the year.

Kahungunu Asset Holding Company Limited acquired 1 share in Area 2 Finfish Management Company Limited (Area2) during the year. This represents a 2.56% holding in that company. These shares have been included at cost. The net book value of the company's share in Area2 as disclosed in its Annual report at 31 March 2013 was \$570 (31/3/2012: Nil).

Kahungunu Asset Holding Company Limited acquired 3705 shares in Trident Systems General Partner Limited (Trident) during the year. This represents a 1.18% holding in that company. These shares have been included at cost. The net book value of the company's share in Trident as disclosed in its Annual report at 31 July 2013 was \$285 (31/3/2012: Nil).

The Society's wholly owned subsidiary companies are registered in New Zealand.

	Consolidated		Parent	
	2013	2012	2013	2012
	\$	\$	\$	\$
<b>11 BANK ACCOUNTS</b>				
Petty Cash	191	109	191	109
Cheque Account	1,257,073	1,829,743	1,129,678	1,592,833
Call Account	470,472	167,986	85,023	164,371
Term Deposits	8,757,422	14,099,401	4,250,436	5,150,297
	<u>10,485,159</u>	<u>16,097,239</u>	<u>5,465,328</u>	<u>6,907,610</u>

Deposits totalling \$3,602,323 (2011 \$3,203,903) arise from fishing receipts and are being held in trust subject to resolution of disputes regarding allocation.(refer to note 16).

<b>12 STOCKS ON HAND</b>				
Merchandise	2,725	2,580	2,725	2,580
	<u>2,725</u>	<u>2,580</u>	<u>2,725</u>	<u>2,580</u>

### 13 SETTLEMENT QUOTA RECEIVABLE

Kahungunu Asset Holding Company Ltd holds CRA3 quota to the value of \$1,617,057 which is receivable by Ngāti Kahungunu Iwi Inc. and on payable as part of an agreed settlement between Ngāti Kahungunu Iwi Inc. and Rongomawahine Iwi Trust (refer note 16 below).

### 14 CREDITORS & OTHER PAYABLES

Accrued Expenses	116,069	100,336	103,879	86,527
Trade & Other Creditors	265,646	257,735	211,509	1,670,911
GST Payable / (Refundable)	382,221	(1,132)	(21,935)	(12,879)
PAYE & Wages Payable	54,253	49,153	46,883	38,529
Staff Social Club	3,143	3,551	3,143	3,551
	<u>821,333</u>	<u>409,643</u>	<u>343,479</u>	<u>1,786,639</u>

### 15 MOTOR VEHICLE FINANCES

Total instalments outstanding	-	44,350	-	44,350
Payable within 1 year	-	44,350	-	44,350
1-2 years	-	-	-	-
2-5 years	-	-	-	-
	<u>-</u>	<u>44,350</u>	<u>-</u>	<u>44,350</u>

# Notes to and Forming Part of the Financial Statements

FOR THE YEAR ENDED 30 JUNE 2013

	Consolidated		Parent	
	2013 \$	2012 \$	2013 \$	2012 \$
<b>16 PROVISIONS - RONGOMAIWAHINE IWI TRUST</b>				
Funds Held in Trust Including Interest	2,787,341	2,631,616	2,787,341	2,631,616
Quota CRA3 Held in Trust	1,617,057	1,617,057	1,617,057	1,617,057
ACE Sales Held in Trust	814,982	536,802	814,982	536,802
Total Held in Trust	5,219,380	4,785,475	5,219,380	4,785,475
Less Quota CRA3	(1,617,057)	(1,617,057)	(1,617,057)	(1,617,057)
Cash amount required to settle and provided for	3,602,323	3,168,418	3,602,323	3,168,418

The provision includes the CRA3 quota referred to in note 13 above and an amount of \$3,602,323 set aside to settle the dispute with the Rongomaiwahine Iwi Trust in accordance with the deed of settlement signed 21 July 2006. The exact amount of the settlement is not known as the dispute is still to be settled.

## 17 LOANS PAYABLE

Related parties of the society include directors, subsidiaries and entities in which directors also hold governance positions.

Ocean Noise				
- Waka Loan Due 2016	230,000	-	230,000	-
ANZ Bank Floating Loan @ 4.7% Due 30/4/16	3,000,000	-	-	-
ANZ Bank 2 yr Fixed Loan @ 4.96% Due 30/4/23	1,500,000	-	-	-
ANZ Bank 3 yr Fixed Loan @ 5.14% Due 30/4/23	1,500,000	-	-	-
ANZ Bank 4 yr Fixed Loan @ 5.31% Due 30/4/23	2,000,000	-	-	-
ANZ Bank 5 yr Fixed Loan @ 5.50% Due 30/4/23	2,000,000	-	-	-
	10,230,000	-	230,000	-

The borrowings from ANZ Bank are secured by way of registered 1st mortgage over the Tautane Station property.

The loan from Ocean Noise is due to be repaid in 3 annual installments of \$115,000, is interest free and secured over the waka.

## 18 RELATED PARTY TRANSACTIONS

Related parties of the society include directors, subsidiaries and entities in which directors also hold governance positions.

The Society paid fees to the directors during the year. The value of these are shown in note 3. There were no amounts outstanding at balance date relating to these transactions.

There are transactions between Ngāti Kahungunu Iwi Inc. and Kahungunu Asset Holding Company Limited in relation to shared services for administrative support totalling \$13,800. The society also receives a dividend from Kahungunu Asset Holding Company Ltd. During the year the Kahungunu Asset Holding Company Ltd paid a dividend of \$1,640,000 to the society. (2012:\$1,640,000). Additionally during the year Kahaungunu Asset Holding Company Limited received a further settlement of aquaculture of \$1,499,845.

KAHC Investments Ltd is a subsidiary of Kahungunu Asset Holding Company Ltd. It has been created to hold post settlement quota, such as new species that are introduced into the quota management system, and has not yet traded.

The Society collects and distributes funds on behalf of and to constituent Taiwhenua and Taurahere organisations. There are common board members between the society and the Taiwhenua and Taurahere organisations who are noted below.

Transactions between Ngāti Kahungunu Iwi Inc and these organisations include:  
HB District Health Board \$63,538.49 (a)

# Notes to and Forming Part of the Financial Statements

FOR THE YEAR ENDED 30 JUNE 2013

Waipukurau Community Marae Committee	\$1,304.35 (b)
Wairarapa Moana Incorporation	\$443.48 (c)
(a) Ngahiwi Tomoana Deputy Chair of HB District Health Board	
(b) Robert Ropiha Board Chairman of Waipukurau Community Marae Committee	
(c) Nelson Rangī - Board Member/Shareholder in Wairarapa Moana Incorporation	

The Kahungunu Asset Holding Company paid consultancy fees of \$7,524 to Kamtech Limited in which R Kamau (resigned February 2013) a director has an interest, to Huia NZ Limited which EJE Waitere (resigned February 2013) a director is an employee of. Transactions to the value of \$12,726 were paid to Huia NZ. These were paid at normal commercial rates.

Transactions between Kahungunu Asset Holding Company Ltd and Fiodland Lobster Company Limited include ACE (annual cash entitlement) sold to Fiodland Lobster Company Limited, dividends and directors fees received from Fiodland Lobster Company Limited.

## 19 SUBSEQUENT EVENTS

Kahungunu Asset Holding Company Limited has committed to provide funding of up to \$1,000,000 to Ngāti Kahungunu Iwi Incorporated, to be utilised for the creation of a Kahungunu Innovation Centre. Since balance date, phase 1 initial planning and phase 2 feasibility studies, have occurred to the value of \$190,000 (2012: nil).

## 20 COMMITMENTS AND CONTINGENT LIABILITIES

The board has made a commitment to put \$1,000,000 cash or in kind towards the Kahungunu Innovation Centre.

## 21 OPERATING LEASE COMMITMENTS

Non-cancellable operating lease rentals are payable as follows:-

	Consolidated \$	Parent \$
Within one year	11,286	8,263
Greater than one year	19,969	19,969
	<u>31,255</u>	<u>28,232</u>

Lease commitments relate to the lease of the group's business premises and a motor vehicle operating lease. The current premises lease for the parent expired on 6 May 2013. The terms of agreement are currently under negotiation.

The current lease for the business premises occupied by Kahungunu Asset Holding Company Limited is due to expire on 14 November 2013. There is a right of renewal for a further three years as at 14 November 2013 and this is currently under negotiation.

## 22 CONTINGENT ASSETS

The Society has no contingent assets as at 30 June 2013 (2012: \$52,761, including GST for share of Northland Deepwater Limited Partnership for the 2011/12 fishing year).

## 23 INCOME IN ADVANCE

Included in income in advance is an amount of \$14,249 which relates to an unspent grant from JR McKenzie Trust. The total grant received was \$220,000 of which \$205,751 has been spent to 30 June 2013. Ngāti Kahungunu Iwi Incorporated is administering these funds on behalf of the Constitutional Working Group. (2012: \$108,172).

## 24 TAIWHENUA/TAUAHERE DISTRIBUTION

Net Surplus(deficit)	3,872,489	139,852
Less: Taiwhenua/Taurahere distribution	(230,000)	(230,000)
Net Impact on Equity	<u>3,642,489</u>	<u>(90,148)</u>

\$230,000 has been distributed to the Taiwhenua/Taurahere. This is shown in the Statement of Movements in Equity as it is a distribution to Iwi members, rather than an operational expense. The combined impact of the net surplus above and the distribution, on equity is an overall deficit of (\$90,148).



# Audited Accounts 2012-2013



## *Independent Auditors' Report*

To the members of Ngāti Kahungunu Iwi Incorporated

### **Report on the Financial Statements**

We have audited the financial statements of Ngāti Kahungunu Iwi Incorporated ("the Society") on pages 25 to 33 which comprise the statement of financial position as at 30 June 2013, and the statement of financial performance and statement of movement in equity for the year then ended, and the notes to the financial statements that include a summary of significant accounting policies and other explanatory information for both the Society and the Group. The Group comprises the Society and the entities it controlled at 30 June 2013 or from time to time during the financial year.

### **The Boards Responsibility for the Financial Statements**

The Board is responsible for the preparation and fair presentation of financial statements in accordance with generally accepted accounting practice in New Zealand and for such internal controls as the board members determine are necessary to enable the preparation of financial statements that are free from material misstatement, whether due to fraud or error.

### **Auditors' Responsibility**

Our responsibility is to express an opinion on these financial statements based on our audit. We conducted our audit in accordance with International Standards on Auditing (New Zealand) and International Standards on Auditing. These standards require that we comply with relevant ethical requirements and plan and perform the audit to obtain reasonable assurance about whether the financial statements are free from material misstatement.

An audit involves performing procedures to obtain audit evidence about the amounts and disclosures in the financial statements. The procedures selected depend on the auditors' judgement, including the assessment of the risks of material misstatement of the financial statements, whether due to fraud or error. In making those risk assessments, the auditors consider the internal controls relevant to the Society and Group's preparation of financial statements that present fairly the matters to which they relate, in order to design audit procedures that are appropriate in the circumstances, but not for the purpose of expressing an opinion on the effectiveness of the society and groups internal control. An audit also includes evaluating the appropriateness of accounting policies used and the reasonableness of accounting estimates, as well as evaluating the overall presentation of the financial statements.

We believe that the audit evidence we have obtained is sufficient and appropriate to provide a basis for our audit opinion.

We have no relationship with or interests in the entity other than in our capacities as auditors and in the provision of consultancy services. In addition we perform assurance services for the subsidiary, Kahungunu Asset Holding Company. These services have not impaired our independence as auditors of the Society and the Group.

## **Independent Auditors' Report**

To the members of Ngāti Kahungunu Iwi Incorporated

### **Opinion**

In our opinion, the financial statements on pages 25 to 33 present fairly, in all material respects, the financial position of the Society and Group as at 30 June 2013, and its financial performance for the year ended on that date in accordance with generally accepted accounting practice in New Zealand.

### **Restriction of Distribution or Use**

This report is made solely to the Society's members, as a body. Our audit work has been undertaken so that we might state to the Society's members those matters which we are required to state to them in an auditor's report and for no other purpose. To the fullest extent permitted by law, we do not accept or assume responsibility to anyone other than the Society and the Society's members, as a body, for our audit work, for this report or for the opinions we have formed.

*PricewaterhouseCoopers*

**Chartered Accountants**

**17 October 2013**

**Napier**



**Ngāti Kahungunu Iwi**  
INCORPORATED

# Annual Plan 2013-2014

Ngāti Kahungunu Iwi Incorporated recognises the need to review its objectives and align its strategies with the needs of whānau & hapū. For this purpose the Board has acknowledged the following three areas of focus.

---

### **United Voice**

Ngāti Kahungunu Iwi Incorporated will develop good working relationships with Ngāti Kahungunu whānau and hapū and all of the various entities that represent them so that Ngāti Kahungunu can present a united voice on issues of National importance when required.

### **Advocate/Monitor**

Ngāti Kahungunu Iwi Incorporated will influence policy developed by government agencies, local and regional councils, District Health Boards, Housing etc.

Ngāti Kahungunu Iwi Incorporated will develop a tool to monitor the performance of these entities based on Kahungunu criteria.

### **Kahungunu Te Reo and Tikanga**

Ngāti Kahungunu Iwi Incorporated aspires to have Ngāti Kahungunu Reo spoken and tikanga practised in all places where Kahungunu whānau gather.

---

The Ngāti Kahungunu Iwi Inc annual plan outlined below describes the key objectives for the iwi between July 2013 and June 2014. The activities are based on the following Ngāti Kahungunu Iwi Inc. strategies: He Mahere Rautaki Hai Haumanu I Te Reo O Ngāti Kahungunu - The Revitalization of Te Reo O Ngāti Kahungunu, Kahungunu Ki Uta, Kahungunu Ki Tai - Marine and Freshwater Fisheries Strategic Plan and Te Ara Toiora O Ngāti Kahungunu, the Kahungunu Wellbeing Strategy.

---

## HE MAHERE RAUTAKI HAI HAUMANU I TE REO O NGĀTI KAHUNGUNU STRATEGIC PLAN FOR THE REVITALIZATION OF TE REO O NGĀTI KAHUNGUNU

---

- Whakamana i te Pae o Huaki Pouri – Support the revitalization of Ngāti Kahungunu Paepae
- Support projects that improve the quality of reo, and promote the use of unique Kahungunu language.
- Research Projects
- Manage the Ministry of Education Kahungunu Cultural Standards (KCS) contract
- Provide cultural support to the Te Ara Toiora and Kahungunu ki Uta, Kahungunu ki Tai Units

---

## NATURAL RESOURCE MANAGEMENT

---

### **Kahungunu ki Uta, Kahungunu ki Tai – Marine and Freshwater Strategic Plan**

- Implement a plan which grows and protects natural resources mai i Paritū ki Turakirae.
- Establish governance infrastructure and operational capacity mai i Paritū ki Turakirae.
- Develop natural resource information system(s) and database(s). Use databases to inform decisions and research needs.
- Develop relationships across sectors with influence over natural resources in the rohe and work towards agreement on local management of fisheries and other natural resources.
- Develop a communications strategy and 'one-door policy' that co-ordinates all activities across our rohe.
- Develop a training and development strategy that builds skill, expertise and capacity of hapū and iwi resource managers and rangatahi.
- Develop policy that supports hapū engagement with natural resource users across all sectors.
- Assist hapū development of rohe moana and hapū management plans to support local management of natural resources.
- Assist hapū to develop joint ventures with the Kahungunu Asset Holding Company.
- Continue to develop an integrated natural resource management model to share across the Pacific and the world.

---

## TE ARA TOIORA O NGĀTI KAHUNGUNU KAHUNGUNU WELLBEING STRATEGY

---

Kahungunu 25 year Vision: Strong, Vibrant, Healthy Whānau & Hapū  
– TE HAU O TE MAURI, TE HAU O TE ŌRĀ

- To progress the aims of Te Ara Toiora o Ngāti Kahungunu (Health & Wellbeing Strategy for Ngāti Kahungunu) by:
  - Facilitating, brokering and advocating support for Whānau wellbeing.
  - Developing wellbeing initiatives and strategies to progress and enhance Whānau & Hapū wellbeing.
  - Providing opportunities for Whānau and Hapū to gather knowledge for wellbeing (Wānanga).
  - Creating opportunities to plan for and evaluate the wellbeing of Whānau & Hapū.
  - Quantifying measurable and sustainable outcomes of Whānau Hapū wellbeing.
- Advance the health and wellbeing of the Ngāti Kahungunu Iwi rohe by providing strategic vision, advice and development of:
  - Tupeka Kore - Kahungunu Tobacco Free Strategy
  - Whakarauora Rongoā – Kahungunu Rongoā Revitalisation
  - Whakamoe Patu - Kahungunu Violence Free Strategy
  - Tū Mai Rā – HBDHB Te Waka Toiora

---

## NGĀI TAUNAKI SUPPORT SERVICES

---

- Increase the vibrancy and wellbeing of Kahungunu whānau through events
  - Six Matariki events Jul 2013 & Jun 2014
  - The Inaugural Te Reo Awards Jul 2013
  - NK Sports Awards Oct 2013
  - AGM Pa Sports – Nov 2013
  - Waitangi Day – Feb 2014
  - Fish Hook Summit – March 2014
- Increase the registration database by 1000 members
  - Provide quarterly reports
  - Strengthen opportunities for whānau to self update through an online register
- Increase benefits to members, marae/hapū:
  - Scholarships
  - Sponsorships

# Annual Plan

- Pātaka
- Opportunities – ie free entry into events
- Provide online event management, financial system, communication, database templates.
- Communicate with whānau to inform and keep abreast of activities
  - Iwi Website (New and improved)
  - Built in database for instant e-panui
  - Online interactive calendar of events
  - Media e-release
  - Hōea rā e-newsletter & (quarterly mailout)
- Strengthen the organisations financial systems
- Strengthen internal administrative management for the Chair, CE, the tari and its external groups & sub committees

---

## NGĀ TAKE TŌRANGAPŪ POLITICAL

---

- Strengthen our relationship with the hapū claimant groups
- Improve Kahungunu representation on local and regional councils
- Influence policy developed by government agencies, local and regional councils, District Health Boards, Housing etc.
- Develop a tool to monitor the performance of these entities based on Kahungunu criteria.

---

## NGĀ KAUPAPA WHAKATIPU WHAI RAWA ECONOMIC DEVELOPMENT

---

- Improve the economic status of Kahungunu whānau, hapū, iwi
- Develop the Ngāti Kahungunu Economic Development Strategy
- Provide tools to implement the Kahungunu Economic Development Strategy



**SATURDAY 23RD NOVEMBER 2013**  
**Splash Planet, Grove Road, Hastings**  
**9:00am - 11:00am**

## **AGM AGENDA**

### Standard Business

- Mihimihi
- Hīmene/Karakia
- Apologies
- Minutes of AGM 2012
- Maumahara
- Annual Report 2012-2013
- Chairman's Report
- Audited Financial Statements 2012-2013
- Asset Holding Company Report
- Appoint Auditor
- Annual Plan 2013-2014
- Constitutional Changes  
(Vote will be by ballot of those eligible iwi members present at the AGM.  
View changes on our website)

### Presentations

- Kahungunu Innovation Centre
- Waka Hourua Update
- Freshwater Update
- Research Scholarship

### Hīmene/Karakia

## **AGM PA SPORT**

This is the 8th AGM Pa Sports Day to be held at Splash Planet. The AGM is held in conjunction with a number of sporting activities that take place at the same complex. Marae teams have registered to enjoy the day.

Discount Coupons were made available for whānau not wanting to participate in the sports, who want to swim and enjoy a Kahungunu day at Splash Planet.



Pictures taken at some of the iconic iwi events held throughout the year.



**Ngāti Kahungunu Iwi**  
I N C O R P O R A T E D

TAIKURA HOUSE 304 FITZROY AVENUE, PO BOX 2406, HASTINGS 4153, NEW ZEALAND  
PHONE 06 876 2718 • FAX 06 876 4807 • TOLL FREE 0800 KAHUNGUNU (0800 524 864)  
EMAIL: [ruth@kahungunu.iwi.nz](mailto:ruth@kahungunu.iwi.nz)  
WEB: [www.kahungunu.iwi.nz](http://www.kahungunu.iwi.nz)



**AGM 23 NOVEMBER**  
**9AM SPLASH PLANET, HASTINGS**