

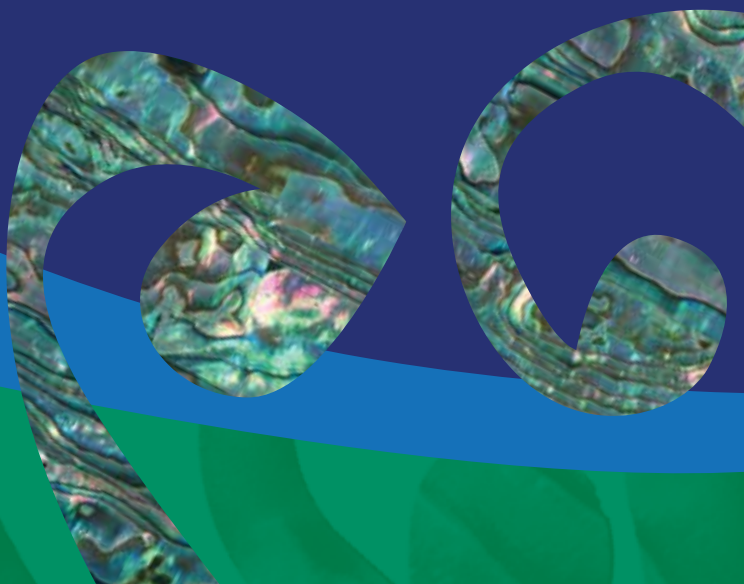
# Hoea rā



**Ngāti Kahungunu Iwi**  
INCORPORATED

## Annual Report 2018 - 2019

Published October 2019



# Table of Contents

|  | Page |
|--|------|
| Purpose, Vision & Mission  | 1    |
| Chairperson's Report   | 2    |
| Chief Executive's Statement                                      | 3    |
| Our Year at a Glance 2018-2019                                   | 5    |
| Board Members 2019-2022  | 6    |
| Staff Members 2018-2019  | 8    |
| Ngāti Kahungunu Iwi Incorporated Organisation Structure          | 10   |
| Te Reo, Tikanga & Mātauranga                                     | 11   |
| Environment & Natural Resources                                  | 12   |
| Benefits to Members  | 16   |
| Kahungunu Asset Holding Company Ltd Chairman's Report            | 25   |
| Kahungunu Asset Holding Company Ltd Directors                    | 30   |
| Ngāti Kahungunu Iwi Incorporated<br>Summary Financial Statements | 32   |
| Annual Plan 2019-2020  | 35   |
| AGM Agenda   | 39   |

New Zealand Prime Minister, The Right Honourable Jacinda Ardern visits Kahungunu, April 2019



# Purpose, Vision & Mission

Ngāti Kahungunu Iwi Incorporated, with the mandate to represent the people of Ngāti Kahungunu, is the governing body for all aspects of Ngāti Kahungunu Iwi development.

The purpose of Ngāti Kahungunu Iwi Incorporated is to:

- Promote or assist the education of Ngāti Kahungunu Iwi
- Promote the custody and preservation of the beliefs, customs and language of Ngāti Kahungunu Iwi
- Promote the social and economic welfare advancement and vocational training of Ngāti Kahungunu Iwi
- Promote personal, whānau and community health and wellbeing and raise the living standards of Ngāti Kahungunu Iwi
- Promote high quality communications to and for the benefit of the members of Ngāti Kahungunu Iwi

## *Strategic Objectives*

In September 2001 consultation with whānau throughout the rohe of Kahungunu occurred. Whānau shared their views, aspirations and desires which helped shape the development of a vision to guide Ngāti Kahungunu into the future. The vision, known as Kahungunu 2026, outlines the vision and mission statements and seven identified strategic objectives to focus on. The Ngāti Kahungunu Iwi Incorporated planning framework continues to outline priorities, activities and desired outcomes that link directly to the seven strategic objectives within the Kahungunu 2026 vision.

The seven strategic objectives are:

- Ngāti Kahungunu - Culturally Strong
- Ngāti Kahungunu - Healthy and Vibrant Whānau
- Ngāti Kahungunu - Economically Strong
- Ngāti Kahungunu - Informed and Participating Citizens in the World
- Ngāti Kahungunu - Independent and Self Determined
- Ngāti Kahungunu - Healthy, Thriving and Sustainable Environment
- Ngāti Kahungunu - Making our Mark

## *Vision Statement*

"Kahungunu - ki te whaiao, ki te ao mārama"

Achieving excellence in all areas of our lives

## *Mission Statement*

Kia maumahara ki te mana āhua ake o Ngāti Kahungunu

Uphold the absolute uniqueness of the living breath of Kahungunu

"To enhance the mana and well-being of Ngāti Kahungunu Iwi"

## *Reporting*

Ngāti Kahungunu Iwi Incorporated has an obligation to provide an 'Annual Report' for its membership to account for the previous financial year 1 July 2018 – 30 June 2019. This document provides a summary report against the objectives set out in the 2018-2019 Annual Plan. It includes steps taken to increase the registration database and gives an overview of the organisation's performance, including changes in the value of its assets, profit distribution and the summary financial statements.

# Chairperson's Report



## HE MANAKO TE KOURA I KORE AI

The 2018 – 2019 year has been a clunky year for the iwi with self-imposed timelines on investments and relationships that have driven us to new heights of engagements but also realising long-term ambitions as prescribed in our 25-year vision. A 30-year-old moemoeā was to hold the total business and activity of fisheries by restoration of our whakapapa with Tangaroa. Another ambition was to ensure that as an iwi, then as hapū and then as whānau, we be economically sustainable and independent of government hence follow a mana motuhake model of development and aspiration.

## HE KURA TE MOKOPUNA – TIAKINA!

The re-engagement with whānau outside the arena of fabulous iconic events has been a key driver throughout this year. The commissioning of high performance executives from government agencies in situ with the iwi office has been part of the strategy to have the intellectual and institutional capacity that have been the preserve of those agencies in the past ready to support whānau kaupapa in real time. The traumatic events surrounding the attempted child uplift in Hastings was quickly managed by community members, leaders and supported by our internal capacity which was fortuitous in the first instance and revealing in its unfolding. To this end our relationship with Ministers of the Crown now become a vital part of our political machinery.

## TAI TIMU, TAI PARI

This was an election year, therefore much time was consumed in registrations, profiling and ensuring that every registered member had access and an ability to vote for their respective candidates. The election result cast new faces to our board, namely, Brian Ruawai-Hamilton for Taura Here, Melissa Ihaka from Wairarapa, Waiora Rogers from Heretaunga and Nigel How from Wairoa. We acknowledge the efforts and contributions of Noeline Smiler, Marama Tuuta, Mike Paku, and Alice Wairau in their unwavering hard work to promote and secure iwi kaupapa.

## MĀ TE HURUHURU TE MANU KA RERE

Our financial position is ahead of our predicted deficit and acknowledgements to the financial and audit committee for bringing the year in under budget. We do now have the internal capacity to monitor and do internal audits which we did not have previously and external relationships are requiring us to have even greater line of sight on our economics as we progress.

## ME UPOKO PAKARU

The Kahungunu Asset Holding Company (KAHC) has realised an iwi dream with the purchase of Hawke's Bay Seafoods, now known as Takitimu Seafoods, which has taken intensive negotiations, determination and stamina throughout this complex period. During this time as well, our partners in Tautāne, Taratahi collapsed into receivership so there have been intensive negotiations with the receivers to ensure our assets, both tangible and financial, were safeguarded throughout the demise of Taratahi. Apart from that, Tautāne and KAHC have not been affected. Although Kahutia was launched with much nervousness, it is now showing signs of great potential for cultural, environmental and economical outcomes.

## NGĀ WHAKAIHUWAKA

To execute all of the above activities with a tightknit core of explosive and energetic staff has again been an eye opener for all and sundry and I commend our tari for their unrelenting efforts in the pursuit of iwi goals and visions.

It is my pleasure to present this report as your newly re-elected Chair.

## TIHEI KAHUNGUNU!

Ngahiwi Tomoana  
Tumuaki - Chairman

# Chief Executive's Statement



Ehara taku toa i te toa takitahi, engari he toa takitini

*Our strength does not come from ourselves alone, our strength derives from the many.*

When I look back over the last 12 months this whakatauākī encapsulates how; with the support and commitment of our community and government partners, whānau, marae, hapū and Taiwhenua; and through the leadership and guidance of our Board; the 10 FTEs of our iwi tari have navigated through adversity, advocated for, advanced and enact the aspirations of our whānau and our 25 year vision. Each of our staff are exemplars within their field of expertise – ka mihi ahau i tō rātau kaha, i tō rātau māia me tā rātau ū ki te iwi.

The capacity and capability of the Iwi tari to deliver has also been enhanced through secondments from our central government partners. This resource is a recognition of the strong partnerships Ngāti Kahungunu Iwi has with our central government partners i.e. Te Puni Kōkiri, Ministry of Social Development, Oranga Tamariki, Department of Corrections, Ministry of Education, Te Mātāwai. Focus is on strengthening the approach towards the Ngāti Kahungunu Toiora strategy and our collective common outcomes. This alongside the strength and knowledge of Te Tumu Whakahaere o te Wero, our community partners and champions, and our Taiwhenua we are well placed for the coming 12 months.

There have also been many twists and turns which we as a Tari and as a Board have had to respond to and advocate clearly our position as an Iwi, and as whānau. The quality and access to our water, the state of our whenua, the revitalisation of our Reo, the advocacy of our stories and our history are but some of the work that is championed by our Directors within the Tari and captured within their report.

The agreed restoration of Te Mata o Rongokako and the establishment of Te Rongo Park Trust has ensured that Mana Whenua are at the decision making table and our tīpuna will be protected for future generations.

The establishment of Kahutia is a direct response to the korero around the degradation of our waterways, whenua and moana. Kahutia focuses on the planting of exotics and restoration of native plantings on marginal land to stem erosion, and siltation. While still in its initial phase I look forward to the opportunities that will come from Kahutia.

Iwi Build Summit held in May 2019; brought the impact of the housing crisis and the resulting concerns of our whānau to the forefront. Through our partnerships; co-led with Hastings District Council, we are developing a place based housing solution for the Hastings District which will be submitted to Cabinet later this year. This is supported by the National Iwi Chairs Forum and will be considered as a model for other Iwi and communities to follow.

The attempted uplift by Oranga Tamariki was a tearful reminder of the adverse effect of Crown systems on whānau and the fabric of our whakapapa. The need to be diligent and steadfast in our commitment to whānau was demonstrated by our community champions Jean Te Huia, Ripeka Ormsby and Des Ratima. This and the resulting statement by our Chairman “Not one more baby...” has cast the lens on these systems and policies both within government and by Iwi/Māori. Ngāti Kahungunu Iwi remain committed to working with Oranga Tamariki to support a resolution and change in these systems and uphold the retention of whakapapa and whānau.

# Chief Executive's Statement

The opening of E Hine Therapeutic Centre administered by Te Taiwhenua o Heretaunga is a positive step towards the outcomes sought under the Whakaritenga Pāhekoheko Kawenata with Department of Corrections. This work and the Hōkai Rangi strategy launched by the Minister for Corrections Hon Kelvin Davis is a direct result of Uncle Tom Hemopo's unwavering advocacy and the Tū Mai Rangi report by the Waitangi Tribunal.

The acquisition of Takitimu Seafoods Limited Partnership in April is a major step forward to the realisation of a 30 year aspiration of Ngāti Kahungunu Iwi and shifts us from a passive to an active player in this sector. The launch itself brought together all the major players in the Seafood industry all voicing support to Ngāti Kahungunu Iwi; not more so than Kīngi Tūheitia Pōtatau Te Wherowhero VII himself who graced us attending and cutting the ribbon. Takitimu Seafoods, like any other new business is still working through its "storming and forming" phase however, Ngāti Kahungunu Iwi see this as a long term investment; one which will provide employment, training for our people and influence positive change within the sector.

Over the last 6 months our Chairman has facilitated a number of workshops to equip and inspire Māori to step up in the coming local body and District Health Board elections. These were held right across the Kahungunu rohe and well supported. I congratulate all those that have taken up the 'wero'.

Finally; I wanted to acknowledge all those that stepped forward in our Iwi elections. Nearly every position was well contested. Ka mau te wehi!

Nāu te rourou,  
Nāku te rourou,  
Ka ora te iwi!



**Chrissie Hape**

Kaiwhakahaere Matua - Chief Executive

# Our Year at A Glance 2018-2019

| Date      | Activity   | Beneficiaries               |
|-----------|--|-----------------------------|
| July 2018 | Receive 2018-2019 Matariki Calendar  | 13,700 households           |
| Aug 2018  | Koroneihana Celebrations   | 118 iwi members             |
| Aug 2018  | Te Reo Symposium   | 621 people                  |
| Sep 2018  | Kōrero Mātauranga wānanga held in Waipawa, Wairoa and Heretaunga                     | 150 people                  |
| Oct 2018  | Te Kura Reo o Ngāti Kahungunu held at EIT Hawke's Bay                                | 200 iwi members             |
| Nov 2018  | Annual Reports delivered   | 13,700 households           |
| Nov 2018  | 13th AGM Pā Sports held at Splash Planet, Hastings                                   | 4,500 iwi members           |
| Nov 2018  | Kai Hau Kai given away at AGM – Steamed pudding, Peaches and Cream, a free BBQ lunch | 1,000 iwi members           |
| Nov 2018  | Te Matatini merchandise was given away   | 4,000 iwi members           |
| Feb 2019  | Kahungunu Waitangi Day   | 5,000 people                |
| Feb 2019  | Kahungunu teams participate in National Te Matatini Kapa Haka Competition            | 5 teams or 200 participants |
| Apr 2019  | Iwi launches TAKITIMU SEAFOODS – opened by Kingi Tūheitia                            | 600 people attend           |
| Apr 2019  | Prime Minister Jacinda Ardern visits Kahungunu for the first time                    | 500 people attend           |
| Apr 2019  | Ngāti Kahungunu Iwi Inc Triennial Board Elections take place                         | 3419 or 21.2% voted         |
| May 2019  | 9th Kahungunu Fish Hook Summit   | 143 attended                |
| Jun 2019  | Iwi Scholarship Disbursed  | 75 recipients               |
| Jun 2019  | Eight Matariki Events held throughout Kahungunu                                      | 22,000 attend               |
| Jun 2019  | Kai Hau Kai given out at Matariki Events   | 500 recipients              |
| All year  | Iwi Sponsorship Disbursed  | 173 recipients              |
| All year  | Benefits to Members Cards given to iwi members                                       | 5211 recipients             |
| All year  | New registered iwi members   | 2529 members                |
| All year  | Tangihanga - Pātaka Fish given to whānau   | 110 whānau                  |

# Board Members 2019-2022

## BOARD ELECTIONS 2019

The Ngāti Kahungunu Iwi Incorporated triennial Board Election took place on Tuesday 30 April 2019. Ten (10) elections took place simultaneously for the ten (10) positions on the Board as follows; The election of six (6) Taiwhenua/Rohe representatives, two (2) Taurahere representatives (one from the Northern District and one from the Southern District), one (1) Kaumātua position and one (1) Chairman position. We would like to acknowledge the outgoing Board members; Michael Paku, Alice Wairau, Marama Tuuta and Noelene Smiler. Board members Haami Hilton, Hori Reti, Hayden Hape and Melissa Ihaka were elected unopposed.



Haami Hilton

### **Kaumātua Representative**

Ko Kahurānaki te maunga  
Ko Ngaruroro te awa  
Ko Poukawa te waiū  
Ko Kahurānaki te marae  
Ko Te Rangikoianake te hapū  
Ko Te Whatuiāpiti te tangata  
Ko Te Hāpuku te rangatira  
Ko Tākitimu te waka  
Ko Ngāti Kahungunu te iwi  
Ko Haami Te Kuru Hilton tōku ingoa



Hori Reti

### **Te Whanganui-a-Ōrotu Taiwhenua Representative**

Ko Maungaharuru te maunga  
Ko Tūtira te waiū  
Ko Te Ngaru te awa  
Ko Tangitū te moana  
Ko Tāngoio te marae  
Ko Hori Reti tōku ingoa



Waiora Rogers

### **Heretaunga Taiwhenua Representative**

Ko Kahurānaki te maunga  
Ko Ngaruroro te awa  
Ko Waipatu, ko Korongata ngā marae  
Ko Ngāti Hawea, ko Ngāti Poporo ngā hapū  
Ko Takitimu te waka  
Ko Ngāti Kahungunu te iwi  
Ko Waiora Rogers tōku ingoa



Nigel How

### **Te Wairoa Taiwhenua Representative**

Ko Iwitea te marae  
Ko Takitimu te waka  
Ko Ngāti Kahungunu te iwi  
Ko Nigel How tōku ingoa



# Board Members 2019-2022



John Barry Heperi-Smith

## Tamatea Taiwhenua Representative

Ko Te Rangi-tapu-ā-whata te maunga  
Ko Whatumā te waiū  
Ko Takitimu te waka  
Ko Te Rongo-a-Tahu te marae  
Ko Ngāti Kahungunu te iwi  
Ko Ngāi Te Kikiri-o-te-Rangi, ko Ngāi Tahu  
Mākakanui, ko Ngāi Toroiwaho ngā hapū  
Ko John Barry (JB) Heperi-Smith tōku ingoa



Hayden Hape

## Kahungunu ki Tāmaki-nui-a-Rua Taiwhenua Representative

Ko Kaitoke te marae  
Ko Ngāti Pakapaka te hapū  
Ko Tākitimu te waka  
Ko Ruahine te maunga  
Ko Manawatū te awa  
Ko Ngāti Kahungunu te iwi  
Ko Hayden Hape tōku ingoa



Melissa Ihaka

## Kahungunu ki Wairarapa Representative

Ko Takitimu te waka  
Ko Rangitūmau te maunga  
Ko Ruamahanga te awa  
Ko Ngāti Kahungunu te iwi  
Ko Hurunui-o-rangi te marae  
Ko Melissa Ihaka tōku ingoa



Owen Purcell

## Taura here Representative

Ko Kahurānaki, ko Te Mata o Rongokako ngā maunga  
Ko Ngaruroro te awa  
Ko Ruahāpia te marae  
Ko Ngāti Hori, ko Ngāti Hawea ngā hapū  
Ko Tākitimu te waka  
Ko Ngāti Kahungunu te iwi  
Nō Kirikiriroa ahau  
Ko Owen Purcell tōku ingoa



Brian Ruawai-Hamilton

## Taura here Representative

Ko Waikaremoana te moana  
Ko Waiau te awa e whāngai nei i te whenua me te tangata  
Ko Rangīāhua, ko Te Kuha, ko Arimāwhā ngā marae  
Ko Tamaterangi te tangata  
Ko Brian Ruawai-Hamilton tōku ingoa

# Staff Members 2018-2019

The management structure has evolved over the year as Ngāti Kahungunu Iwi Incorporated has continued to increase the capacity in the office. The iwi has built relationships with regional and national government agencies to increase opportunities for secondments to work unitedly towards achieving outcomes for whānau development.

Errol Kalmancsi is the Offender Recruitment Consultant (ORC) for the Department of Corrections in partnership with Ngāti Kahungunu Iwi. Errol works with employers who are willing to give men and women who have been imprisoned the opportunity for employment. It's a tough task, but Errol remains positive and works tirelessly to strengthen ties with key people who believe in change. Errol attends almost every staff meeting to give his updates, otherwise he works outside of the office all week.

Tracee Te Huia is the Kahutia Accord Programme Director. Kahutia Limited Partnership is a newly formed Company set up by Ngāti Kahungunu through carbon sequestration and reforestation including planting indigenous trees to earn carbon credits.

Tawehi Munro is a secondee from the Ministry of Education and has taken on the role of Mātauranga Project Manager within the Te Reo, Tikanga and Mātauranga Directorship. Tawehi's role includes assessing our relationship with the Ministry of Education and focusing on mutual priorities that will benefit whānau, hapū, iwi.

Shade Smith started in December 2018 as the Senior Analyst for the Environment and Natural Resources Unit working alongside Unit Director Ngaio Tiuka to undertake analysis and research to provide quality advice to support and protect the Ngāti Kahungunu environment.

Tangi-Jean Mihaere started as the Executive Assistant in March 2019. In her role she provides all secretarial and administrative services that support the Chairperson, Chief Executive and the Ngāti Kahungunu Iwi Incorporated Board. We would like to acknowledge the previous Executive Assistant, Kate Karaka who worked with the organisation for the past two and a half years. In February Kate took up a new career with Housing New Zealand.

Rawinia Lewis is a secondee from the Ministry of Social Development. She started working with the iwi on 4 June 2019. Her role as Senior Advisor will be to provide opportunities for better housing solutions for whānau and seek out potential training options that will lead whānau to more sustainable employment.

Amuri Te Huia is a secondee from Oranga Tamariki. Her role as Senior Advisor is to develop a strategic partnership agreement for early prevention and intensive interventions for Kahungunu whānau.

Collectively Rawinia and Amuri have a wider brief to work with other government agencies to apply a 'Systems Thinking' approach across the social sector to build an evidenced approach that is whānau centric, holistic and enables agencies to better respond to our whānau needs in a joined-up way.

Taasha Romana commenced on 12 August 2019 as the interim Programme Manager to support Te Kāhui Ōhanga o Takitimu (TKOT) under the umbrella of Ngāti Kahungunu Iwi Incorporated. TKOT was formed as a collective partner to develop a regional economic development strategy that is focused on ensuring that whānau thrive.

# Staff Members 2018-2019



**Chrissie Hape**  
Chief Executive



**Ruth Wong**  
Director of Smart  
Services and  
Communications  
Advisor



**Ngaio Tiuka**  
Director of  
Environment and  
Natural  
Resources



**Jeremy Tātere  
MacLeod**  
Director of Te Reo,  
Tikanga and  
Mātauranga



**Tracee Te Huia**  
Kahutia Accord  
Programme  
Director



**Shade Smith**  
Environment &  
Natural Resources  
Senior Analyst



**Tawehi Munro**  
Mātauranga  
Manager, Ministry  
of Education



**Rawinia Lewis**  
Senior Advisor,  
Ministry of Social  
Development



**Amuri Te Huia**  
Senior Advisor,  
Oranga  
Tamariki



**Taasha Romana**  
Te Kāhui  
Ōhanga o Takitimu  
Programme Manager



**Errol Kalmancsi**  
Corrections Offender  
Recruitment  
Consultant

## Te Ara Toiora Team



**Kerrin Fair**  
Database  
Administrator



**Michelle Ferris**  
Senior Administrator  
& Receptionist



**Hine Hape**  
Finance Officer



**Tangi-Jean Mihaere**  
Executive  
Assistant



**Te Rangi Huata**  
Events &  
Promotions  
Manager

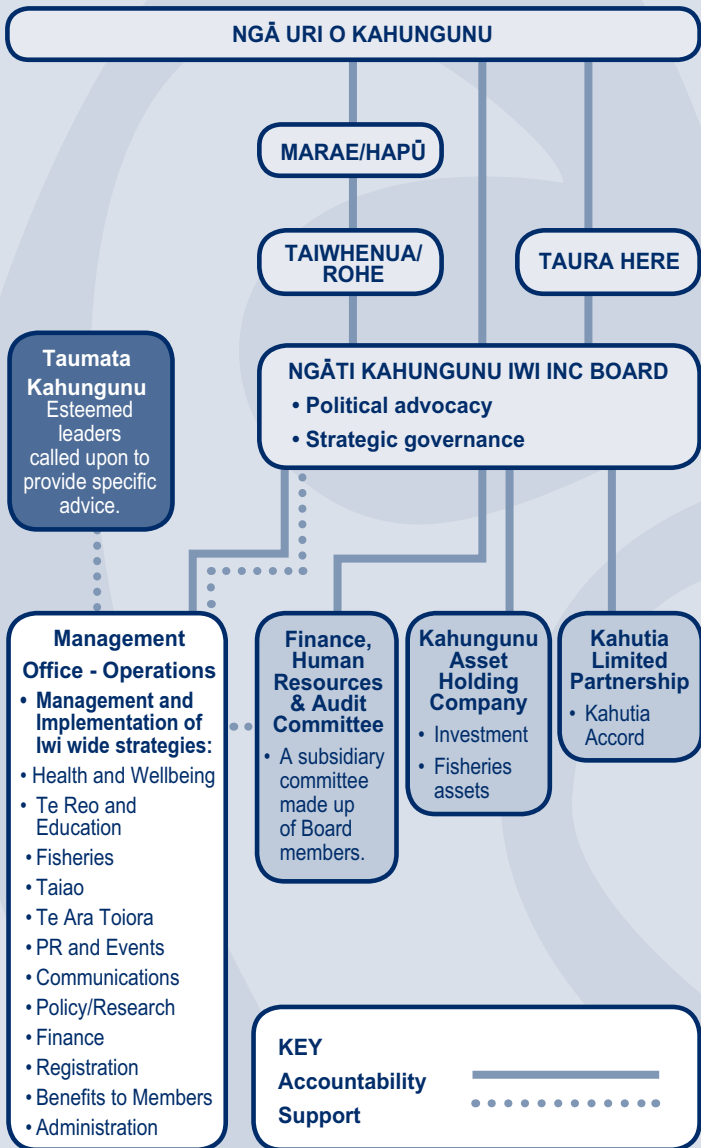


**Danielle Keil**  
Special Projects  
& Events  
Support

## Smart Services Team

# Ngāti Kahungunu Iwi Incorporated Organisation Structure

Ngāti Kahungunu Iwi Incorporated is governed by ngā uri o Kahungunu through its constitutional organisational structure. This diagram depicts the structure of the iwi from marae/hapū to governance and through to management and workstream level.



# Te Reo, Tikanga & Mātauranga

Tangihia ō tātau mate o te tau, e te iwi. Ngā mate i takoto ai ki tēnā marae, ki tēnā kāinga, ki tēnā takiwā, haere rā koutou ki te wahangūtanga o te tangata, ki reira okioki mai ai. Ka mihi i konei te tōtara whakamarumarua o te reo me ōna tikanga, a Dr. Wharehuia Milroy i mate i roto i te tau kua mahue ake nei. Waiho ake koutou te pito o te mate ki te pō, ka waiho mai ai ko te pito ora ki te ao, kia ora tātau katoa.

Tau atu, tau mai, ka pai kē atu ngā mahi whakarauora reo a Ngāti Kahungunu. Anei e hau nei ō tātau rongo mō tātau kua tahuri nei ki tō tātau reo, ahakoa te roa e tāria ana kia pēnei te karawhiu, me whakanui e tātau ō tātau hekenga werawera i roto i te tau kua mahue ake nei.

Ko te waimaria o Ngāti Kahungunu ko te āwhina mai a waho. Rangatira ana ngā kaupapa whakarauora reo i te homai a tēnā me tēnā. Koi wareware tō tātau maringanui i ēnei mātanga reo e tautoko mai nei i a tātau. Tēnā koutou e aroha mai nei ki tēnei reo e kaha nei ki te whakahoki mai i te reo ka hia nei te roa e moe ana, engari kua ora haere i roto i ōna kāinga maha.

I tēnei tau kua mahue ake nei i whakakotahitia te kurutetenga reo Māori, Te Reo ki Tua me Ngā Tohu Reo o Ngāti Kahungunu. 11 ngā whakaihūwaka reo i whakamānawatia - kaumātua mai, tamariki mai, pakeke mai, whānau mai. I neke atu i te 1000 ngā tāngata i tae ake ki Te Reo ki Tua i tēnei tau, whakamīharo ana tērā te pōi mai o te tini tangata ki runga i a tātau ki te kimi i te oranga tonutanga o te reo.

I eke anō te wānanga "Whakamana i Te Pae o Huaki-pōuri" ki tōna tau tuaono. E haere tonu nei tēnei wānanga, he whakangungu i te hunga karanga me te whaikōrero i runga i ō tātau marae. He mea tiki atu i waho ngā puna mātauranga, ā, kāre a Kahungunu i te mataku ki te tiki atu i te mātauranga i te hunga kai a rātau ngā kōrero, ahakoa nō hea. Ko te mea nui e mau ana ngā kōrero, koi ngaro.

He huhua ā tātau mahi katoa kia tuhia ki konei. Heoi anō tāku, he mihi ki ngā toa reo o waenga i tō tātau iwi. Ko koutou kai te mura o te ahi e whawhai ana i te whawhai pai kia tahuri mai ai tō tātau rahi ki tō rātau reo. He hiki aha tō hiki? He hiki roa tō hiki! Mā te pūnoke, mā te pūkeke e puta anō ai te ihu o te reo Māori ki te whaiao, ki te ao mārama!

Kahungunu, kia eke! Tō reo kia ora!

**Jeremy Tātere MacLeod**

Pouarataki – Director, Te Reo, Tikanga me Mātauranga



Te Reo Symposium that hosted over 1,000 language enthusiasts.

# Environment & Natural Resources

Over the last 12 months we have seen a number of significant changes within Ngāti Kahungunu of particular relevance to the mahi within te taiao me ōna rawa. There has been a substantial investment in fisheries, in both processing and deep sea trawling, which in turn places greater emphasis on ensuring that the iwi's social, environmental, cultural and economic bottom lines are sound and that environmental sustainability for Ngāti Kahungunu is paramount. Growth has also literally taken place in the form of trees and through iwi wānanga with Robert 'Pa' McGowan. These wānanga are a key cog of the Kahutia Accord, led by Tracee Te Huia, which has the ambitious goal of re-cloaking the whenua and in so doing removing carbon dioxide from the air.

The Crown's negotiated settlements and ongoing relationships with its Treaty Partners while growing in terms of attention and rhetoric are challenged to change outcomes and share actual power. Thereby shifting towards true recognition and provision of tangata whenua culture and traditions. This places greater emphasis on Māori/iwi/hapū groups working together to force change, promote indigenous solutions and to avoid negative and paternal influences.

## Key Kahungunu Taiao Goals

- Advocate for Ngāti Kahungunu objectives and values to be incorporated into natural resource decision making and policy development in local, regional and central government.
- Complete a review of the Kahungunu Ki Uta, Kahungunu Ki Tai Strategic Plan.
- Support hapū to progress hapū management plans to enhance their role as Kaitiaki of natural resources.
- Develop quality relationships with organisations to assist us to achieve our natural resource objectives which help to build the capacity and capabilities of our people.

In September 2019 the Waitangi Tribunal released its Stage Two Report on the National Freshwater and Geothermal Claim. Ngāti Kahungunu and a number of hapū were parties to this claim and provided evidence and submissions. The findings were that the present law is in breach of the Treaty, not consistent with its principles and that Māori interests have too often been balanced out altogether in freshwater decision-making. The recommendations are for stronger environmental protection, recognition for wetlands, estuaries and aquifers; effective control of nutrients; power sharing and greater weight to iwi and hapū management plans.

The Government has also recently released a number of discussion documents including *'Essential Freshwater - Healthy Water Fairly Allocated'* outlining their proposed approach to freshwater management. While, not without fault, it is a significant improvement and would mean local Councils would be forced to do more. This includes providing a hierarchy for management centred on health and wellbeing, where the health of the awa comes first, then essential human needs like drinking water comes second, and other needs third. Also, strengthening the requirement to identify and reflect Māori values in freshwater planning, such as providing mahinga kai<sup>1</sup> as a compulsory objective.

Incorporating better direction into local level resource management couldn't come soon enough. Advocating for whanau, hapū and iwi values and interests is a significant undertaking for the Taiao Unit, as kaitiaki, whānau and hapū organisations are forced to engage in a predominantly western framework of management. In the last 12 months there has been a significant increase in collaboration with our Taiwhenua and a number of the Ngāti Kahungunu settlement groups due in part to the

<sup>1</sup> Species, place and practice.

# Environment & Natural Resources

growing issues, needs and awareness. An example is the view that a majority of waterways (at least in Hawke's Bay) are mismanaged. Greater tangata whenua involvement in 'Catchment Plans' is a critical component to solving this; through sharing the whakapapa, pūrākau, and stories of our waterways. This evidence is needed now to protect the Tutaekurī, Ngāruroro, Karamu, Te Whanganui-a-Ōrotu (Ahuriri whanga), and the Heretaunga aquifer. Get ready Mohaka and Wairoa whānau as development of these catchment plans for your awa are not far away.

In terms of Tangaroa, the Taiao unit has submitted on Fisheries NZ, MPI 'sustainability reviews' - requesting greater use of selective fishing gear to allow juveniles to escape and improving environmental sustainability. Including turned mesh (T90) code ends for Tarakihi, whose populations along or near the Kahungunu coastline are reportedly very low. The iwi supports and is actively involved in progressing further research into 'sustainable fishing' technology. Ngāti Kahungunu was also instrumental in preventing the commercial catch for crayfish from increasing, our position is precautionary due to the record sea surface temperatures, climate change and difficulties in fishing.

Ngāti Kahungunu again called for a moratorium on commercial fishing of long fin eels and a specific Tuna plan in Kahungunu led by tangata whenua. Interests and concerns regarding tuna are strong across Kahungunu, the intolerance to commercial eeling is growing. The Crown, reduced the commercial catch by 5 tonnes, setting it at 13 tonnes, while maintaining the allowances for 'Customary Māori fishing' and 'recreational fishing' at 6 and 5 tonnes respectively. The iwi does not commercially fish eels.

Kaitiaki from Moteo Marae, found hundreds of eels dying in the sun away from the awa due to Council drain clearing practices. As a consequence, ourselves, hapū, kaitiaki and council helped develop new operating procedures, with some guidance from Te Waimāori Trust. Long-term we envisage better practices across Kahungunu and local kaitiaki resourced to monitor these practices.

Hawke's Bay East Coast Conservation Management Strategy has resumed development. This is an important guide to a working relationship between DOC and tangata whenua. We also congratulate Jenny Nelson-Smith who was appointed as the new operations manager in Napier, Jenny has a strong relationship with Ngāti Kahungunu.

The iwi supported hapū in their opposition to Whirinaki based PanPac's resource consent to discharge 15M L/day of wastewater into the moana. Despite improvements being made in terms of greater recognition of tangata whenua interests the ultimate objective to prohibit the discharge is a significant work in progress for hapū and the iwi. The Taiao unit also supports Te Whanganui-a-Ōrotu hapū and their representatives on the Port of Napier's Mana Whenua Steering Kōmiti who are in the process of developing a Marine Cultural Health Monitoring programme that is on track to be implemented within the next 12 months.

The significant offence against Te Mata o Rongokako provided a wake-up call in terms of the protections or lack thereof afforded to our most significant sites. However, the opportunity to learn from this costly hara, has been progressed with plenty of knowledgeable tangata whenua providing feedback to Hastings District Council.

To help understand the pressures on, and state of, our environment and possible sustainable solution, the iwi has agreed to support or partner with research institutions to apply for funding on potential research projects. Current collaborative research projects include 1) Sea level rise – studying the impacts on rivers and estuary mahinga kai, 2) Aquifer research, including modelling of water age using isotopes, and how mātauranga

# Environment & Natural Resources

Māori can be incorporated into these scientific models - Heretaunga Taiwhenua are planning wānanga with whānau to try and flesh out how this will be done 3) Braided Rivers, investigating their changes and (potentially improving) their connections to recharge aquifer water. Research projects we currently support includes: coastal archaeology excavations before they succumb to coastal erosion; natives being planted under vines to prevent evaporation and need for weed spray.

The newly created Waikahu Wetland near Waitangi Estuary finished its earthworks and flooding has commenced. This is another collaboration with hapū, Councils, Te Waimāori Trust and others to get this relatively large coastal wetland off the ground.

The iwi has and will continue to advocate for an improved and more directive legal framework to manage the environment at the national level while ensuring meaningful implementation at the local level. Going forward the iwi has been exploring other complementary initiatives and tools towards solutions including:

- Research that aligns with our values and interests towards better management that recognises our culture and traditions.





# Environment & Natural Resources

- Monitoring to ensure the management is appropriate and that tangata whenua are part of regular official reporting.
- Resourcing from government agencies for kaitiaki and kaimahi that is meaningful and doesn't compromise our independence but recognises our expertise and skills in a meaningful and consistent manner across Ngāti Kahungunu.

In December 2018, Senior Analyst Shade Smith of Te Aupōuri and Te Rarawa joined the Taiao unit on a part time basis. Shade has a background in Marine Science and freshwater ecology – running his own consultancy for the last 10 years. Shade is a welcome asset to Ngāti Kahungunu Iwi Incorporated, providing expert advice on a number of environmental issues.

Lastly, in May 2019 the new Ngāti Kahungunu Iwi Incorporated Board were designated roles. Nigel How holds the Taiao portfolio as well as being the Board Representative and Chair of the Wairoa Taiwhenua. Nigel brings a wealth of knowledge and experience and vital governance support and insight for the challenges ahead.

## **Ngaio Tiuka**

Pouarataki – Director, Te Taiao me ōna Rawa



# Benefits to Members

## **SMART SERVICES**

The Smart Services team is a dynamic group of individuals who work well together to ensure that all iwi activities are planned, lead, organised, communicated and managed in an efficient way. This year we have focused on using our online tools to improve the way we communicate and inform our members. We are now fully cloud based and have new tools that can be used from anywhere in the world. We have migrated from a Microsoft Access Registration to a cloud based SQL (structured query language) database which allows us to produce more comprehensive reports to assist our people.

## **COMMUNICATIONS**

Ngāti Kahungunu Iwi Incorporated continues to take pride in the way we communicate with our registered iwi members, our potential members, other iwi networks and with the public in general. The whole purpose of communicating well is to ensure everyone knows who we are and why we exist.

We are pleased with the volume of new registrations that has enabled us to communicate with over 2500 new members.

Throughout the year we have continued to communicate using tools such as facebook, our iwi website, the pānuī ki te iwi email network, advertisements in newspapers, Tihei Kahungunu our 8-12 page Kahungunu newspaper which features everything and anything we want to promote and share with the wider public. Our website has become the best portal for registering whānau to attend events. This online tool has made the process easier to manage. Application forms and expressions of interest for almost all events and activities are now available online.

Our next step is to encourage a more interactive registration website where whānau will be able to update their own information.

## **REGISTRATIONS**

Over the year we have registered 2529 new members. This is an overwhelming amount of people considering the capacity in our tari. Kerrin Fair has been very busy working with a small team of interns to help input the data. As at 30 June 2019 our iwi membership total was 32,377. This increase is mainly due to the Iwi Benefit to Member Card initiative. Whānau members who have received a card feel connected, happy and grateful to be Kahungunu.

## **BENEFIT TO MEMBERS IWI MEMBERSHIP CARD**

Two years ago we introduced the Iwi Benefit to Member Card. The purpose of the card is to first create pride in belonging to your iwi, secondly it is an opportunity to access benefits such as free or discounted entrance to major iwi hosted events, access to scholarships, sponsorships, kai hau kai, food vouchers and so forth. In April 2019 Ngāti Kahungunu Iwi Incorporated purchased Takitimu Seafoods. One of the benefits to members is a 15% discount on fresh fish. We also have a relationship with Star Foods and Iwi Member Card holders can get a 5% discount. We continue to value our relationship with Simplicity Funeral Services which we launched in February 2018. Over 100 families have taken advantage of the Simplicity Kahungunu Funeral package. The iwi continues to seek opportunities to benefit our members and help support whānau and hapū development.

Tihei Kahungunu

**Ruth Wong**

Pouarataki – Director, Smart Services & Communications Advisor

# Benefits to Members

## EVENTS

Ngāti Kahungunu Iwi Incorporated strives to produce and sponsor events that strengthen hauoratanga, whanaungatanga and Kahungunutanga.

### **Kahungunu AGM Pā Sports Day November 2018, Splash Planet, Hastings**

In November we hosted another wonderful sports day with over 1,100 players from Wairoa to Wairarapa marae competing in netball, 3 on 3 basketball, volleyball, kiwi sports, Kī-o-rahi and euchre. Whānau came from Wellington, Masterton, Dannevirke, Hamilton and Wairoa.

Our AGM meeting held outdoors was live streamed to 12,000 viewers. We provided "Kai Hau Kai" to our card carrying members. We also served a steak and garden salad lunch for 1,000 people and distributed 1,000 steam puddings with a can of peaches and bottle of cream plus hoodies and jackets left over from Te Matatini 2017.

### **Iron Māori December 2018, Ahuriri, Napier**

This year whānau came to support their loved ones as they ran around Ahuriri lagoon and cycled through the surrounding countryside. The swim section was abandoned due to high pollution levels in storm water created by the run-off from nearby industrial properties and farms.

Kaumatua from near and far created a party vibe as they danced, pranced and sang their way across the finish line in their own event. It was heartening to see hundreds of youngsters participate in their special event.

Ngāti Kahungunu Iwi Incorporated is always delighted to sponsor this wonderful homegrown international lifestyle changing event.

We acknowledge the sterling work of Missy & George Mackey as they bowed out of the IronMaori team. Stalwarts Heather & Wayne Skipworth alongside Lee Grace and his wife Kiri Bird will continue to put on a superb event.

### **Waitangi Day February 2019, Hawke's Bay Sports Park, Hastings**

Thousands turned out to enjoy our free National Day celebrations. The highlight for youngsters were the free Mahons Thrill rides all day. The Bostock and Crasborn family businesses provided free squash and pears and thousands of delighted and grateful locals took up the offer. It's the first time it's rained on Waitangi Day however that didn't deter the turnout of sports teams competing in netball, 3 on 3 basketball, Kī-o-rahi, touch and league tournaments.

### **Matariki Whānau Festival June 2018, Kahungunu wide**

Whānau from across our 6 taiwhenua regions came out in record numbers to our 18th annual Matariki Maori new year celebrations to enjoy feasting, festivity and fireworks.

Tirama Matariki Light Trail kicked off festivities in Masterton on Queen's Birthday weekend with a massive turnout for the 3 night event. The Mayor and deputy Mayor both turned up with their grandchildren to ride the Masterton miniature train in the dark.

Tamatea celebrations at our new venue Back Paddock Lake near Takapau attracted another big crowd to the water lantern ceremony, kai, entertainment and spectacular fireworks.

The same was experienced at our other Matariki celebrations in Heretaunga, Wairoa, Wainuiomata and Tāmaki-nui-a-Rua with record crowds turning up at all these events.

We appreciate our taiwhenua supporters, Wainuiomata Lions Rugby Leabue Club and funders Te Puni Kōkiri, Trust House, Clubs Hastings, Lower Hutt Council and Ati Awa Toa FM.

### **Our Events Commitment**

"To provide benefits to our members one by one, family by family in their thousands."

By Kahungunu, For Kahungunu, For Everyone, Forever !

## Te Rangi Huata

Events and Promotions Manager

# Benefits to Members



2019 National Ki Orahī Secondary Tournament



IronMaori 2018

## Waiata Māori Music Awards September 2018, Clubs Hastings.

Founded by the late Tama Huata, this iconic national event now in it's 12th year honours the outstanding achievements of traditional and contemporary music composition and performance. Ngāti Kahungunu Iwi is proud to sponsor this superb platform for national Māori music excellence in our region. Pictured is the 'Alien Weaponry Band' awarded the Best Music Video 2018.



# Benefits to Members

## SPONSORSHIP GRANTS

Ngāti Kahungunu Iwi Incorporated has a Sponsorship Budget that is used to support the overwhelming number of applications we receive each year. The Sponsorship fund is available all year in accordance with the policy and is set aside for eligible iwi members or groups who represent Kahungunu in a national or international sporting or cultural event. This year we supported and sponsored over 173 individuals and groups.

Throughout the year we have also offered registered iwi members a discounted registration to attend Te Kura Reo 2018, Whakamana 2018 and the AGM Pa Sports held at Splash Planet in Hastings. Our major iwi events such as Waitangi Day, Matariki, Fish Hook Summit and the Te Reo Symposium remain free to all participants. The following list highlights those who received sponsorship funds during the 2018-2019 financial year. *Those in italics received sponsorship from the Community Sponsorship Fund.*

| Recipient Name                                   | Event of Activity  | Value             |
|--|--|-------------------|
| Alizeigh Hanley-Edwards                          | NSW Softball U17 Girls Tournament                                    | \$500.00          |
| Amiria Tamati                                    | National U15S Premier Girls' Tournament                              | \$200.00          |
| Anania Tamati                                    | Rawleighs National Girls' Hockey Tournament                          | \$250.00          |
| <i>Anaru Bartlett</i>                            | <i>Hawke's Bay Community Secondary &amp; Primary Schools Touch</i>   | <i>\$5,950.00</i> |
| Angel Promotions Ltd                             | Battle For Life 2018   | \$1,000.00        |
| <i>Aotearoa Maori National Bowls 2019</i>        | <i>National Māori Bowls Tournament 2018</i>                          | <i>\$4,000.00</i> |
| Arapera Taiapa Johnson                           | Cultural Exchange Europe Trip  | \$200.00          |
| Arapeta Te iti Kahurangi Potiki Matiaha Peretini | 2019 Waka Ama Sprint Nationals                                       | \$250.00          |
| <i>Ararau Productions</i>                        | <i>National Waka Ama Long Distance Competition 2018</i>              | <i>\$5,000.00</i> |
| Arie Te Whiu                                     | Lego League Legoland California International Competition            | \$300.00          |
| Arthur Smith                                     | Mel Young Easter Classic Tournament                                  | \$120.00          |
| Ashton Robinson-Bartlett                         | World Cup Touch - Blacks Open Mens Squad                             | \$500.00          |
| Atawhai Tuki                                     | International Folklore & Folk Art Festival - Italy                   | \$250.00          |
| Aurora Akauola                                   | Va'a Waka Ama Sprints  | \$500.00          |
| Benjamin Dimitrious Hanara                       | International Indigenous Conference Hawaii                           | \$400.00          |
| Bridge Pa Ki Kahungunu Wahine Rugby League       | NZ Māori Rugby League Tuakana Tournament                             | \$500.00          |
| Byron Taufao                                     | NZ Māori Basketball Tournament                                       | \$125.00          |
| Chanel Tapine-Walker                             | International Tag Football Federation World Cup 2018                 | \$500.00          |
| Charlene Jessup                                  | NZ Evergreens Womens Softball Tournament                             | \$200.00          |
| Charles Makea                                    | 2018 Mountain Bike World Champs, Switzerland                         | \$500.00          |
| Christina Nikera-Winitana                        | International Folklore & Folk Art Festival - Italy                   | \$250.00          |
| Connor Hulme                                     | U14 Pony Baseball Miyazaki Japan                                     | \$300.00          |
| Crystal Jessup                                   | NZ Evergreens Womens Softball Tournament                             | \$200.00          |
| Danielle Alo                                     | Cultural Exchange Europe Trip  | \$200.00          |
| Darell Ngatai                                    | 2019 Waka Ama Sprint Nationals                                       | \$250.00          |
| Dayton-Peter Boladuadua                          | NZ Māori Basketball Tournament                                       | \$125.00          |
| Denvor Jayde Elia                                | John Lucas All Star Tournament                                       | \$500.00          |
| Dontae Nance                                     | John Lucas All Star Tournament                                       | \$500.00          |
| Ducati Walford-Collier                           | Va'a Waka Ama Sprints - Tahiti                                       | \$500.00          |
| <i>Eastern Institute of Technology</i>           | <i>Te Ara o Takitimu Graduation Partnership</i>                      | <i>\$2,000.00</i> |
| Eden Peters                                      | International Excellence in Science, Tech, Engineering Art and Maths | \$500.00          |
| Elana Tahuri                                     | Athletic Colgate Games   | \$75.00           |

# Benefits to Members

| Recipient Name                                  | Event of Activity                                 | Value      |
|---|---|------------|
| Estienne-Jane Boladuadua                        | NZ Māori Basketball Tournament                    | \$125.00   |
| Flaxmere Planning Committee                     | Community Event Support                           | \$880.00   |
| Haize Butler-Brown                              | IPS National Touch Tournament                     | \$200.00   |
| Hannah Cotter                                   | NZ U15 National Hockey Tournament                 | \$250.00   |
| Hastings Boys High School<br>Kapa Haka          | Kapa Haka   | \$115.65   |
| Heinz Watties Ross Shield                       | Ross Shield Wairoa Team                           | \$500.00   |
| Heretaunga Basketball Social Mixed              | NZ Māori Basketball Tournament                    | \$500.00   |
| Heretaunga Basketball U11 Boys                  | NZ Māori Basketball Tournament                    | \$500.00   |
| Heretaunga Basketball U11 Girls                 | NZ Māori Basketball Tournament                    | \$500.00   |
| Heretaunga Basketball U13 Boys                  | NZ Māori Basketball Tournament                    | \$500.00   |
| Heretaunga Basketball U13 Girls                 | NZ Māori Basketball Tournament                    | \$500.00   |
| Heretaunga Basketball U15 Boys                  | NZ Māori Basketball Tournament                    | \$500.00   |
| Heretaunga Basketball U15 Girls                 | NZ Māori Basketball Tournament                    | \$500.00   |
| Heretaunga Basketball U17 Boys                  | NZ Māori Basketball Tournament                    | \$500.00   |
| Horowai Puketapu                                | NZ Maori Fast Pitch Tournament 2019               | \$250.00   |
| Hunter Andrew                                   | 7'S Rugby Tri Nations Tournament                  | \$250.00   |
| Ihaka Matairangi                                | Archery - Defence Force Invictus Games, Australia | \$500.00   |
| Innika Hapuku-Lambert                           | U13 NZ Girls' Softball Tournament                 | \$500.00   |
| Iwi Leaders Tangihanga Tautoko - Gordon Paku    | Tangihanga Tautoko                                | \$250.00   |
| Iwi Leaders Tangihanga Tautoko - Heitia Hiha    | Tangihanga Tautoko                                | \$140.00   |
| Iwi Leaders Tangihanga Tautoko - Jarrod Huirama | Tangihanga Tautoko                                | \$2,500.00 |
| Iwi Leaders Tangihanga Tautoko - Waipa Te Rito  | Tangihanga Tautoko                                | \$2,250.00 |
| Iwi Toi Kahungunu - Artists Exhibition          | Te Matatini 2019                                  | \$1,000.00 |
| Jada-Rose Smith                                 | International World Supremacy Hip Hop Competition | \$500.00   |
| Jayden Walker                                   | NBHS XV South Africa Tour 2019                    | \$500.00   |
| Jayden Williamson                               | 2019 Oceania Combined Champion Events             | \$500.00   |
| Jean-Marie Paama-Akavi                          | Va'a Waka Ama Sprints - Tahiti                    | \$500.00   |
| Jeremiah Rimene-Albrett                         | 2019 Waka Ama Sprint Nationals                    | \$250.00   |
| Jeremiah Thompson Watt-Wilson                   | 2019 Waka Ama Sprint Nationals                    | \$250.00   |
| Jerry Hapuku (Te Whanau Hapuku)                 | A Pukawa Memorial                                 | \$1,000.00 |
| Jesse Moana Humberstone Kara                    | Trans Tasman Athletics Cup                        | \$500.00   |
| Joaquin - Jay Mitchell                          | Athletic Colgate Games                            | \$75.00    |
| Joseph Nuku                                     | 2019 Waka Ama Sprint Nationals                    | \$250.00   |
| Juliana Bennett                                 | 2019 Waka Ama Sprint Nationals                    | \$250.00   |
| Kaden Herewini Makea                            | Hoop Nation Eltham Tournament 2019                | \$400.00   |
| Kahungunu Matangirau                            | NZ Māori Basketball Tournament                    | \$1,000.00 |
| Kahuranaki Treacher                             | U13 Basketball Central Zone Tournament            | \$250.00   |
| Kaitlan Patricia Cotter                         | NZ Trans Tasman Hockey Series - Australia         | \$500.00   |
| Karnak Heremia                                  | Fijian Cup - Touch Tournament                     | \$500.00   |
| Kasaia-Marie Hazel                              | International World Supremacy Hip Hop Competition | \$500.00   |
| Kathlee Albrett-Rimene                          | 2019 Waka Ama Sprint Nationals                    | \$250.00   |
| Keija Miringaorangi                             | Mel Young Easter Classic Tournament               | \$120.00   |

# Benefits to Members

| Recipient Name  | Event of Activity   | Value              |
|---|---|--------------------|
| Kenneth Marau Cunningham                              | International Folklore & Folk Art Festival - Italy              | \$250.00           |
| Khiara Devonshire Smith                               | NZ Māori Netball Oranga Healthy Lifestyles Tournament           | \$250.00           |
| KJ Kemp   | International Folklore & Folk Art Festival - Italy              | \$250.00           |
| <i>Kohupatiki Marae &amp; Flaxmere College</i>        | <i>ANZAC Māori Battalion D Company</i>                          | <i>\$2,100.00</i>  |
| Kwade Te Paihau Chadwick                              | Junior National Reps Tournament                                 | \$250.00           |
| Kyle-Rae Smiler                                       | Champion Of Champions Squash Nationals                          | \$250.00           |
| London Sciascia-Taufao                                | NZ Māori Basketball Tournament                                  | \$125.00           |
| Maia Rose Williams                                    | International World Supremacy Hip Hop Competition               | \$500.00           |
| Maiden-Lee Coe  | AON Junior Development Squash Squad                             | \$250.00           |
| Manaia Heperi   | International Folklore & Folk Art Festival - Italy              | \$500.00           |
| Manaia Wilson   | NZ U16 mixed development Touch Team                             | \$500.00           |
| Manila Haapu  | International Folklore & Folk Art Festival - Italy              | \$250.00           |
| Maraki Edwards  | Mel Young Easter Classic Tournament                             | \$120.00           |
| <i>Matangirau Kapa Haka</i>                           | <i>Te Matatini 2019</i>   | <i>\$2,500.00</i>  |
| <i>Miriama Hammond tautoko to attend</i>              | <i>Waiata Māori Music Awards</i>                                | <i>\$195.36</i>    |
| Moana Paringatai Hare                                 | Cultural Exchange Europe Trip                                   | \$200.00           |
| Monique Poa   | NZ Māori Netball Oranga Healthy Lifestyles Tournament           | \$250.00           |
| Nadia de Thierry                                      | U13 Basketball Central Zone Tournament                          | \$250.00           |
| Nephi Elkington                                       | International Folklore & Folk Art Festival - Italy              | \$250.00           |
| <i>Nga Taonga Taakaro Charitable Trust</i>            | <i>National Ki o Rahi Competition 2019</i>                      | <i>\$6,300.00</i>  |
| Ngakau o Taupoki Nixon                                | World Rugby Festival 2019                                       | \$500.00           |
| Ngati Kahungunu Ki Tamaki Nui A Rua Trust - 4 Teams   | NZ Māori Basketball Tournament                                  | \$600.00           |
| <i>Ngati Kahungunu Runanga Arts &amp; Culture</i>     | <i>Te Matatini 2019</i>   | <i>\$2,608.70</i>  |
| Nicky Lee Epps  | Va'a Waka Ama Sprints - Tahiti                                  | \$500.00           |
| <i>NKII Inkind Support</i>                            | <i>Administration, Travel etc</i>                               | <i>\$14,321.81</i> |
| Noah Robinson   | Mel Young Easter Classic Tournament                             | \$120.00           |
| <i>NZ Educational Institute Te Riu Roa</i>            | <i>Te Kahui Whetu</i>   | <i>\$1,000.00</i>  |
| NZ Junior Touch Nationals Team                        | NZ Junior Touch Nationals                                       | \$150.00           |
| Oriwia Scott  | Cultural Exchange Europe Trip                                   | \$200.00           |
| <i>Otane Sports Club</i>                              | <i>Te Wero - Rugby Tournament</i>                               | <i>\$500.00</i>    |
| Paddy Rimene  | 2019 Waka Ama Sprint Nationals                                  | \$250.00           |
| Paharakeke ki Ngati Kahungunu                         | Netball in Paradise Tournament                                  | \$1,000.00         |
| Pahlyss Hokianga                                      | NZ Basketball Academy U13 Tournament                            | \$200.00           |
| Paranihia Tamakehu                                    | 2019 Waka Ama Sprint Nationals                                  | \$250.00           |
| Parekura Te Miringa Kira Te Whiu                      | Cultural Exchange Europe Trip                                   | \$200.00           |
| <i>Paul Henare &amp; Paora Winitana Academy Trust</i> | <i>Federation of Indoor Basketball Association Hall of Fame</i> | <i>\$2,000.00</i>  |
| Pearl Boladuadua                                      | NZ Māori Basketball Tournament                                  | \$125.00           |
| Pereka Hapuku-Karaitiana                              | Lego League Legoland California International Competition       | \$300.00           |
| Pikitia Tuuta   | 2019 Waka Ama Sprint Nationals                                  | \$250.00           |
| Pirihira Ropiha                                       | Cultural Exchange Europe Trip                                   | \$200.00           |
| PJ Rimene-Albrett                                     | 2019 Waka Ama Sprint Nationals                                  | \$250.00           |
| <i>Porangahau Kaumatua</i>                            | <i>Kaumātua Christmas Dinner</i>                                | <i>\$500.00</i>    |
| Racheal Downs   | Pan Pacific Games - Hockey                                      | \$500.00           |
| <i>Radio Kahungunu</i>                                | <i>30 Years Celebrations</i>                                    | <i>\$1,500.00</i>  |
| Raewyn Ioane  | International Folklore & Folk Art Festival - Italy              | \$250.00           |
| Rahere Johnson  | Cultural Exchange Europe Trip                                   | \$200.00           |

# Benefits to Members

| Recipient Name                                  | Event of Activity  | Value       |
|---|--|-------------|
| Raiha Keenan                                    | Cultural Exchange Europe Trip                                    | \$200.00    |
| Rangipaihuarere Te Hau Grant                    | Cultural Exchange Europe Trip                                    | \$200.00    |
| <i>Ratana Hahi</i>                              | <i>100th Anniversary 2018</i>                                    | \$400.00    |
| Reina Beamsley Allan                            | Cultural Exchange Europe Trip                                    | \$200.00    |
| Rikailo Ngatai-Rimene                           | 2019 Waka Ama Sprint Nationals                                   | \$250.00    |
| Roimata Fakalago                                | NZ U15 Softball - SW Blue Blaze Series                           | \$500.00    |
| Rongowhitiao Maaka                              | Academy of International Eye Opener                              | \$350.00    |
| Rosie Symes                                     | NZ Basketball Central Zone U13 Regionals                         | \$250.00    |
| Ruth Lawrence                                   | International Folklore & Folk Art Festival - Italy               | \$250.00    |
| Safari Hynes                                    | International Trans Tasman Mens and Mixed Netball Series         | \$500.00    |
| <i>Sam Tiuka</i>                                | <i>Breast Cancer Tautoko</i>                                     | \$500.00    |
| Selena Couch                                    | China Marathon 2019  | \$500.00    |
| Shane Foster                                    | Tag Football World Cup, Sydney                                   | \$500.00    |
| Shannel Ranui Tamati-Herrick                    | National Hockey Masters Tournament 2019                          | \$250.00    |
| Shannon Rimene-Allbrett                         | 2019 Waka Ama Sprint Nationals                                   | \$250.00    |
| Sharna-Lee Thompson Watt                        | 2019 Waka Ama Sprint Nationals                                   | \$250.00    |
| Sharnie Te Rimene Waikare-Parkes                | 2019 Waka Ama Sprint Nationals                                   | \$250.00    |
| Simon Jarvis                                    | Taekwondo World Cup - Sydney, Australia                          | \$500.00    |
| <i>Sport Hawke's Bay</i>                        | <i>Wairoa Sport Awards; Senior Sportsperson of the year 2018</i> | \$500.00    |
| <i>Sport Hawke's Bay</i>                        | <i>Impact on Māori Sport Category for the 2019 Sport Awards</i>  | \$500.00    |
| Tahliya Nissen-Locker                           | Cultural Exchange Europe Trip                                    | \$200.00    |
| Taimania Pupuke                                 | Studio of the World Dance Competition                            | \$500.00    |
| <i>Tama Turanga Kapa Haka Committee</i>         | <i>Kapa Haka - Tama Turanga Ahurei</i>                           | \$1,000.00  |
| <i>Tamanuhiri Russell</i>                       | <i>Artists Exhibition</i>  | \$750.00    |
| Tatiana Greening (Tautoko lan Taylor)           | NZ of the Year Awards  | \$500.00    |
| Tatyana Elliot                                  | International Softball Academy U15 Girls                         | \$500.00    |
| <i>Te Kapa Haka o Ngāti Ranginui</i>            | <i>Te Matatini 2019</i>  | \$2,500.00  |
| <i>Te Kohanga Reo o Kaitoki</i>                 | <i>Korowaitanga 2019</i>   | \$1,000.00  |
| <i>Te Matatini 2017 Event Providers Tickets</i> | <i>Te Matatini 2019</i>  | \$1,600.00  |
| Te Matau A Maui U17 Girls' Touch Team           | NZ Māori Touch Tournament  | \$500.00    |
| Te Orihau Karaitiana                            | Guangzhou Fashion Week 2019                                      | \$500.00    |
| Te Orora Waihape                                | Cultural Exchange Europe Trip                                    | \$200.00    |
| Te Piataaio Borrell                             | Cultural Exchange Europe Trip                                    | \$200.00    |
| <i>Te Rangiora o Wairarapa Kapa Haka</i>        | <i>Te Matatini 2019</i>  | \$2,500.00  |
| <i>Te Rerenga Kotuku Kapa Haka</i>              | <i>Te Matatini 2019</i>  | \$2,500.00  |
| Te Taitimu Trust                                | Suicide Symposium  | \$1,000.00  |
| <i>Te Timatanga Ararau Trust</i>                | <i>IronMāori 2018</i>  | \$10,000.00 |
| <i>Te Whare Tu Taua o Aotearoa</i>              | <i>Te Whare Tuu Taua Graduation</i>                              | \$1,000.00  |
| Tehya Andrew                                    | NZ Māori Netball Oranga Healthy Lifestyles Tournament            | \$250.00    |
| Tellyn Te Whaiti-Ioane                          | International World Supremacy Hip Hop Competition                | \$500.00    |
| Thompson Hokianga                               | International Folklore & Folk Art Festival - Italy               | \$250.00    |
| Tongouri Bennett Te Peeti                       | 2019 Waka Ama Sprint Nationals                                   | \$250.00    |
| Touch Hawke's Bay U10's mixed                   | NZ Inter Provincial Series Tournament                            | \$350.00    |



# Benefits to Members

| Recipient Name                             | Event of Activity                           | Value       |
|--|---|-------------|
| Touch Hawke's Bay U18 Girls                | NZ Touch National Championship              | \$350.00    |
| Tremaine Rimene-Albrett                    | 2019 Waka Ama Sprint Nationals              | \$250.00    |
| Tuteremoana Tamakehu                       | 2019 Waka Ama Sprint Nationals              | \$250.00    |
| Violette Emma Rose Perry                   | NZ Māori international Tournament           | \$500.00    |
| Waiata Maori Music Awards Charitable Trust | Waiata Māori Music Awards                   | \$10,000.00 |
| Waikawa Sciascia                           | Cultural Exchange Europe Trip               | \$200.00    |
| Waimarama Kura Reo 2018                    | Kura Reo 2018                               | \$2,800.00  |
| Wairarapa Kaumatua Hui ki Heretaunga       | Kaumātua Excursion                          | \$1,096.90  |
| Weston Miringaorangi                       | Mel Young Easter Classic Tournament         | \$120.00    |
| Wikitoria (Keileigh) Tamati                | Rawleighs National Girls' Hockey Tournament | \$250.00    |

## SCHOLARSHIP GRANTS

We believe that education is the key to personal whānau, hapū and iwi development. A good education helps to strengthen opportunities for quality employment, sustainable housing, further education and strong vibrant healthy whānau. For this purpose the Board approved a Scholarship fund to the amount of \$40,000.

For the past 5 years Ngāti Kahungunu Iwi Incorporated has had a partnership with Victoria University who has matched what the iwi gives to their eligible students up to the amount of \$10,000. This year we supported 74 General Scholarship recipients with \$500 each and 1 Research Scholarship recipient with \$5,000.

| First name      | Surname        | Taiwhenua            | Qualification sought                         |
|-----------------|----------------|----------------------|--|
| AITKEN          | Lucy           | Wairarapa            | Bachelor of Law                              |
| BARCLAY         | James          | Heretaunga           | Bachelor of Law & Commerce                   |
| BETHELL         | Steve          | Tamatea              | Bachelor of Māori Studies                    |
| BIRD            | Jessica        | Heretaunga           | Bachelor of Maori Arts                       |
| BIRD            | Lyric          | Heretaunga           | Masters of Indigenous Studies                |
| BRIGHT          | Rebekah        | Tamatea              | Bachelor of Law                              |
| BROWNE          | Ethan          | Wairoa               | Bachelor of Fine Arts (Acting)               |
| CASSIDY         | Sharyn         | Wairarapa            | Masters in Education (Poutāhu Whakaakoranga) |
| COUPER          | Sophie         | Wairoa               | Bachelor of Medicine & Bachelor of Surgery   |
| DENNIS          | Rosaline       | Wairoa               | Graduate Diploma in Teaching                 |
| EDWARDS         | Lucy           | Wairoa               | Bachelor of Medicine & Bachelor of Surgery   |
| EDWARDS-HAMMOND | Rahiri         | Wairoa               | Diploma in Arts                              |
| FERRIS          | Rowland        | Heretaunga           | Bachelor of Health Science                   |
| FOSTER          | Nancy          | Heretaunga           | Graduate Diploma in Creative Writing         |
| FOSTER          | Hana           | Wairarapa            | Bachelor of Nursing                          |
| FOX             | Ririwai        | Wairarapa            | PHD  |
| GEMMELL         | Joanna         | Wairoa               | Masters of Science                           |
| GEORGE          | Grace          | Wairarapa            | Bachelor of Medicine & Bachelor of Surgery   |
| GREENING        | Parris         | Wairoa               | Masters in Business Administration           |
| HAKOPA          | Tapekaoterangi | Wairarapa            | Bachelor of Dental Surgery                   |
| HAMLIN          | Warren         | Heretaunga           | Masters in Education (Poutāhu Whakaakoranga) |
| HAWKINS         | Lucky          | Wairoa               | Masters in Education                         |
| HIHA            | Savanna        | Te Whanganui A Orotu | Bachelor of Laws                             |
| HOOKER          | Corriana       | Heretaunga           | Bachelor in Environmental Planning           |
| HURA            | Angelia        | Heretaunga           | PHD Conservation Biology                     |
| HURST           | Makere         | Wairoa               | Masters of Economics and Econometrics        |
| KENRICK         | Tracey         | Tamatea              | Masters in Education (Poutāhu Whakaakoranga) |
| KIHI-APUWAI     | Luana          | Tamatea              | Bachelor of Nursing                          |

# Benefits to Members

| First name                            | Surname         | Taiwhenua            | Qualification sought  |
|---------------------------------------|-----------------|----------------------|---|
| KINGI                                 | Reihana         | Heretaunga           | Bachelor of Health Science  |
| KINGI                                 | Reuben          | Tamatea              | Bachelor of Engineering   |
| LEWIS                                 | Casandra        | Wairarapa            | Bachelor of Social Sciences   |
| MAKEA                                 | Alexander       | Wairoa               | Bachelor of Arts  |
| MCINTOSH                              | Sami            | Heretaunga           | Bachelor of Nursing   |
| MEIHANA                               | Douglas         | Wairoa               | Diploma in Health Psychology  |
| MIKA                                  | Jason           | Te Whanganui A Orotu | Indigenous Entrepreneurship   |
| MOAT                                  | Emma            | Heretaunga           | Bachelor of Commerce  |
| MORUNGA                               | Taryn           | Wairarapa            | Bachelor of Radiation Therapy   |
| NIA NIA                               | Awhiora         | Wairoa               | Bachelor of Midwifery   |
| NICKLIN                               | Hinema          | Wairoa               | Bachelor of Laws and Bachelor of Commerce majoring in Marketing and Public Policy |
| PARATA-TAIAPA                         | Rongomaitawhiti | Heretaunga           | Masters of Māori Visual Arts  |
| PEACOCK                               | Alanis          | Wairarapa            | Bachelor of Māori Development   |
| PENI                                  | Vicky           | Heretaunga           | Masters in Education (Poutāhu Whakaakoranga)                                      |
| POMANA                                | Cheryl          | Heretaunga           | Bachelor of Māori, BA Ahunga Tikanga Māori Lore & Philosophy                      |
| PURIRI                                | Jaz             | Heretaunga           | Bachelor of Science Majoring in Ecology, Biodiversity and Environmental Science   |
| RATIMA                                | Mihi            | Heretaunga           | Diploma Māori Visual Art  |
| READ-EDEN                             | Winniema        | Heretaunga           | Bachelor of Medicine & Bachelor of Surgery  |
| READ-EDEN                             | Israel          | Heretaunga           | Bachelor of Medicine & Bachelor of Surgery  |
| REID                                  | Terrance        | Heretaunga           | Bachelor of Dental Surgery  |
| RIBBON                                | Courtney        | Wairoa               | Bachelor of Commerce  |
| ROBERTSON                             | Jessica         | Wairoa               | Bachelor of Science   |
| RUSSELL                               | Kereana         | Heretaunga           | Bachelor of Medicine & Bachelor of Surgery  |
| RUWHIU                                | Denver          | Wairoa               | Bachelor of Medicine & Bachelor of Surgery  |
| SMITH                                 | Tania           | Wairoa               | Bachelor of Early Childhood Teaching  |
| SOLOMON                               | Joshua          | Wairoa               | Bachelor of Medicine & Bachelor of Surgery  |
| STIRLING                              | Ruiha           | Heretaunga           | Masters in Applied Indigenous Studies   |
| TAREHA                                | Chad            | Te Whanganui A Orotu | Bachelor of Arts  |
| TE AHO                                | Lavinia         | Heretaunga           | Graduate Diploma in Primary School Teaching                                       |
| TE WHAITI-SMITH                       | Jordan          | Wairarapa            | Bachelor of Medicine and Surgery  |
| TIMU                                  | Edward          | Heretaunga           | Bachelor of Māori   |
| TIPENE                                | Rehutai         | Heretaunga           | Bachelor in Health & Science  |
| VERCOE                                | Hinematawaia    | Heretaunga           | Full time Post Graduate   |
| WAENGA                                | Jamie           | Heretaunga           | Bachelor of Nursing   |
| WAIKAWA                               | Trevor          | Wairoa               | Bachelor of Science   |
| WAITAI                                | Raukurawaihoia  | Wairarapa            | Bachelor of Māori Visual Arts   |
| WAKEFIELD                             | Ngahine         | Wairoa               | Bachelor of Applied Arts  |
| WATI-COOPER                           | Maia            | Heretaunga           | Bachelor of Civil Engineering   |
| WILLIAMS                              | Naya            | Wairoa               | Doctorate in Clinical Psychology  |
| WILLIAMS                              | Ariana          | Wairoa               | Masters of Teaching and Learning  |
| WILSON                                | Miriama         | Wairoa               | Bachelor of Science in Medicinal Chemistry  |
| WILSON                                | Simeon          | Wairoa               | Bachelor of Oral Health   |
| WINIANA                               | Maia            | Wairoa               | Bachelor of Laws and Bachelor of Arts   |
| WONG                                  | Hemi            | Heretaunga           | Bachelor of Science-Neuroscience  |
| WORKMAN                               | Te Rimene       | Wairarapa            | Bachelor of Law & Commerce  |
| WRIGHT                                | Kathryn         | Wairoa               | Diploma of Education, Counselling & Guidance                                      |
| <b>Research Scholarship Recipient</b> |                 |                      |   |
| TE HUIA                               | Beverly         | Heretaunga           | Masters of Public Health  |

# Kahungunu Asset Holding Company Ltd Chairman's Report



**Kahungunu, He tangata ahuwhenua, mōhio ki te whakahaere i ngā māhi o uta me ō tai.**

## **Tīhei Kahungunu!**

It is my pleasure to provide the report of the Kahungunu Asset Holding Company Limited (the Company) for the year ended 30 June 2019.

## **Background**

The Company was established in 2005 by Ngāti Kahungunu Iwi Incorporated (NKII) to receive and manage the Treaty of Waitangi fisheries settlement on behalf of Ngāti Kahungunu.

The Company vision is to “Empower Ngāti Kahungunu Iwi Incorporated through sustainable economic and commercial success” and has a mission to “grow and maximise the assets of Ngāti Kahungunu Iwi Incorporated so the full potential and aspirations of our iwi will be met.” To achieve the vision and mission of the Company, the following objectives have been set:

- **Kia Mataara:** To ensure the assets of the Company are invested prudently and within the Company’s purpose and rules.
- **Whakapakaritanga:** To improve the value of the Company’s capital base.
- **Whakamana:** Generate sufficient income to support the needs and aspirations of Ngāti Kahungunu Iwi Incorporated.

## **Nature of Business**

The business of the Company is to manage the fisheries settlement assets and other commercial assets of Ngāti Kahungunu Iwi Incorporated (NKII) for maximum commercial benefit. The Company has agreed a three year Statement of Intent with the NKII Board which has set the strategic direction for the Company for 2017 to 2020. The Company farewelled Pania Tyson Nathan in May and Taine Randell in June of this year. The Company acknowledges the strong contributions that both of these Directors have made to meeting the Company objectives.

## **Fisheries Assets**

On 8 April Takitimu Seafoods (GP) Limited was launched in a ceremony officiated by His Majesty Kingi Tūheitia. The Company purchased the business formerly known as Hawke’s Bay Seafoods and the launch of Takitimu Seafoods fulfilled the long held Iwi aspiration of further investment in the fishing industry. It was a proud day for all the members of Ngāti Kahungunu Iwi.

The Company share of the loss from the Pania Reef Fisheries Limited Partnership is 1,138,915. While the Glomfjord performed strongly during the 2019 Hoki season, it is yet to prove itself as a year round capable vessel. The Company is working closely with the Pania Reef Fisheries partnership to strengthen the annual quota catch plan for the vessel with a view to improving the partnerships year round profitability. The loss incurred by the partnership was expected as the Iwi pushes forward on strengthening its position within the fishing industry.

The purchase of the new fishing company is a welcome addition to our other key assets of fishing quota, the fishing vessel Glomfjord, shares in Aotearoa Fisheries Limited (AFL), Napier Mussels Limited, Fiordland Lobster Company Limited, and cash. The Company received the following settlement assets to manage on behalf of Ngāti Kahungunu in accordance with the Maori Fisheries Act 2004:

- August 2006: 162,942,485 quota shares valued at \$9,436,87<sup>1</sup>

<sup>1</sup> The shares in AFL and quota received under the Fisheries Settlement process have been included in the accounts at the value established by Te Ohu Kaimoana on transfer.

# Kahungunu Asset Holding Company Ltd Chairman's Report

- August 2006: 7874 income shares in Aotearoa Fisheries Ltd, valued at \$19,874,733
- July 2010: 501,527,278 quota shares valued at \$16,933,500
- September 2012: Aquaculture pre-commencement space settlement cash \$1,499,845
- Cash of \$2,030,106.

We have received a total of 15,748 shares (7,874 Voting, 7,874 Non-voting) in Aotearoa Fisheries Ltd (AFL) as part of the fisheries settlement which is a 6.3% holding in AFL. There will be no impairment of our shareholdings in AFL for this current year, although we may be required to undertake future re-valuations of our AFL shareholdings in the future. The Company is looking to strengthen its position with its current fisheries assets through a programme of consolidation and ongoing investment into Takitimu Seafoods.

## Non Fisheries Assets

The Company will continue to investigate opportunities to diversify its asset portfolio. The Company takes a conservative approach to investment to deliberately reduce our exposure to undue risk. We are open to non-fisheries investment opportunities but it has to match our current investment strategy and risk profile. The Company provided funds for the Iwi to establish Kahutia Limited Partnership and funding for the purchase of land associated with the Kenderdine forest.

## Financial Performance

The Company has recorded a before tax profit of \$3,710,209.

### Gross Profit 2011-2019

|                  |                    |
|------------------|--------------------|
| 30-Jun-11        | \$3,409,582        |
| 30-Jun-12        | \$3,872,548        |
| 30-Jun-13        | \$5,372,656        |
| 30-Jun-14        | (\$2,463,070)      |
| 30-Jun-15        | \$4,906,408        |
| 30-Jun-16        | \$4,269,724        |
| 30-Jun-17        | \$3,800,206        |
| 30-Jun-18        | \$3,201,179        |
| <b>30-Jun-19</b> | <b>\$3,710,209</b> |

### Retained Earnings 2010-2018

|                  |                     |
|------------------|---------------------|
| 30-Jun-11        | \$4,983,779         |
| 30-Jun-12        | \$7,216,327         |
| 30-Jun-13        | \$10,948,984        |
| 30-Jun-14        | \$6,845,914         |
| 30-Jun-15        | \$9,712,322         |
| 30-Jun-16        | \$12,342,046        |
| 30-Jun-17        | \$16,601,235        |
| 30-Jun-18        | \$17,307,944        |
| <b>30-Jun-19</b> | <b>\$18,663,153</b> |

# Kahungunu Asset Holding Company Ltd Chairman's Report

## Equity 2010-2018

|                  |                     |
|------------------|---------------------|
| 30-Jun-11        | \$53,992,484        |
| 30-Jun-12        | \$57,724,877        |
| 30-Jun-13        | \$61,457,534        |
| 30-Jun-14        | \$57,124,464        |
| 30-Jun-15        | \$61,567,929        |
| 30-Jun-16        | \$69,540,526        |
| 30-Jun-17        | \$68,726,842        |
| 30-Jun-18        | \$69,433,551        |
| <b>30-Jun-19</b> | <b>\$70,788,760</b> |

During the year the Company paid a dividend to NKII of \$2,355,000 (2018: \$2,494,470). The Company has reported an increase in equity of \$1,355,209 for the year ended 30 June 2019.

## FINANCIAL PERFORMANCE BY ASSET CLASS

### Shares in Aotearoa Fisheries Ltd

The Company received a cash dividend from AFL of \$653,861 during the year (2018: \$737,488).

The net book value (NBV) of the Company shareholding in AFL as disclosed in its Annual Report on 30 September 2018 was \$27,495,693.

### Aotearoa Fisheries Shares NBV

|                  |                     |
|------------------|---------------------|
| 30-Jun-11        | \$24,342,565        |
| 30-Jun-12        | \$24,969,398        |
| 30-Jun-13        | \$25,456,767        |
| 30-Jun-14        | \$19,777,784        |
| 30-Jun-15        | \$26,000,982        |
| 30-Jun-16        | \$25,736,263        |
| 30-Jun-17        | \$26,553,710        |
| 30-Jun-18        | \$27,495,693        |
| <b>30-Jun-19</b> | <b>\$27,495,693</b> |

### Shares in Fiordland Lobster Company Ltd

The Company owns 136,670 shares in Fiordland Lobster Company Limited (FLC). This represents a 5.87% holding in FLC. These shares have been included in the Company accounts at cost. The net book value of the Company shareholding in FLC as disclosed in its annual report at 31 March 2019 was \$14,008,156 (31/3/18: \$11,489,674 ).

# Kahungunu Asset Holding Company Ltd Chairman's Report

## Fiordland Lobster Dividend

|                  |                  |
|------------------|------------------|
| 30-Jun-11        | \$144,749        |
| 30-Jun-12        | \$159,224        |
| 30-Jun-13        | \$159,224        |
| 30-June-14       | \$263,180        |
| 30-Jun-15        | \$197,385        |
| 30-Jun-16        | \$263,180        |
| 30-Jun-17        | \$283,500        |
| 30-Jun-18        | \$341,675        |
| <b>30-Jun-19</b> | <b>\$341,675</b> |

## Fiordland Lobster NBV shares

|                  |                     |
|------------------|---------------------|
| 30-Jun-11        | \$3,733,886         |
| 30-Jun-12        | \$4,297,351         |
| 30-Jun-13        | \$5,087,409         |
| 30-Jun-14        | \$5,934,847         |
| 30-Jun-15        | \$7,595,503         |
| 30-Jun-16        | \$9,785,972         |
| 30-Jun-17        | \$10,403,222        |
| 30-Jun-18        | \$11,489,674        |
| <b>30-Jun-19</b> | <b>\$14,008,156</b> |

## Quota - ACE sales

Company earnings from the lease of Annual Catch Entitlement (ACE).

## ACE Sales

|                  |                    |
|------------------|--------------------|
| 30-Jun-11        | \$3,153,147        |
| 30-Jun-12        | \$3,300,792        |
| 30-Jun-13        | \$3,276,042        |
| 30-Jun-14        | \$3,309,567        |
| 30-Jun-15        | \$4,113,130        |
| 30-Jun-16        | \$3,568,914        |
| 30-Jun-17        | \$2,983,198        |
| 30-Jun-18        | \$3,467,373        |
| <b>30-Jun-19</b> | <b>\$3,821,435</b> |

## Shares in Napier Mussels Ltd

The Company holds ownership of 91% of Napier Mussels Ltd. This amount has been written off due to impairment in value. Shareholder funding was made during the year of \$18,200 (2018: Nil). The share advances are recorded at nil value as they do not currently have a realisable value.

## Shares in Area 2 Finfish Management Company Limited

The Company holds 1 share in Area 2 Finfish Management Company Limited (Area2). This represents a 2.56% holding in that company. These shares have been included at cost. The net book value of the Company share in Area2 as disclosed in its annual report at 30 September 2016 was \$574 (31/3/2017: \$574). This company was removed from the company register 08/12/17.

# Kahungunu Asset Holding Company Ltd Chairman's Report

## **Shares in Trident Systems General Partner Limited**

The Company owns 3,705 shares in Trident Systems General Partner Limited (Trident). This represents a 1.18% holding in that company. These shares have been included at cost. The net book value of the Company's share as disclosed in its annual report at 30 September 2016 was Nil (30/09/2015: Nil).

## **Shares in Salco Quota Co Limited Partnership**

The Company acquired 100,000 units with Salco Quota Co Limited partnership in 2014 for the purchase price of \$100,000. An additional 135,135 units were purchased during 2016 for \$250,000. All units have been included at cost.

## **Pania Reef Fisheries (GP) Limited**

Pania Reef Fisheries (GP) Limited is the general partner of Pania Reef Fisheries Limited Partnership, of which the Company is a 50% shareholder. HBS Tuna Limited is the other 50% shareholder and joint equal partner in Pania Reef Fisheries Limited Partnership. Pania Reef Fisheries (GP) Limited is not currently trading.

## **Pania Reef Fisheries Limited Partnership**

The Company made a capital contribution of \$750,000 to Pania Reef Fisheries Limited Partnership during the 2017 financial year. Control has been assessed as joint therefore the accounts have not been consolidated. The loss of \$1,138,915 based on the 30 June 2019 (2018: \$1,181,950) audited financial statements has been recognised.

## **Takitimu Seafoods (GP) Limited**

Takitimu Seafoods (GP) Limited is the general partner of Takitimu Seafoods Limited Partnership of which the Company is a 100% shareholder. These have been recognised at cost.

## **Shares in KAHC Investments Limited**

The Company owns 100 shares in KAHC Investments Limited. KAHC investments Limited has not traded during the year (2018:Nil).

## **Constitutional reporting**

During the year to 30 June 2019 there have been no:

- Transactions with settlement quota that have resulted in a registered interest by way of caveat or mortgage being placed over the quota;
- Interest registered against the settlement quota shares;
- Sales or exchanges or acquisitions of AFL income shares.

## **Going Forward**

The investment in Takitimu Seafoods has placed the lwi in a strong position to process and export fish product to the world. This investment will require strong leadership to enable it to reach its full potential. With the ongoing investment required to establish Takitimu Seafoods I believe the result for the year is pleasing. I offer the attached consolidated statement of the Company financial performance for your consideration.



**Ranghi Manuel**  
Chairman

# Kahungunu Asset Holding Company Ltd

## Directors



**Rangi Manuel**  
*Independent  
Representative/  
KAHC Chair*

- Secretary/Trustee, Wairoa Waikaremoana Māori Trust Board
- Pania Reef Fisheries Ltd
- Takitimu Seafoods Ltd
- Chairman, Ohuia Incorporation
- Pohaturua Committee
- Tātau Tātau Advisory Board for Asset Holding Company



**Trevor Moeke**  
*Independent  
Representative*

- Company Director, Akonga Holdings Ltd, Contract Management Consultancy
- Principal Advisor, Crown Māori Capability Office of Executive, The Treasury



**Hayden Hape**  
*NKII Board Shareholder  
Representative*

- Board Member, Ngāti Kahungunu Iwi Incorporated
- Chair, Tāmaki-nui-a-Rua Taiwhenua
- Member & Negotiator, Ngāti Kahungunu ki Wairarapa Tāmaki-nui-a-Rua Treaty Claimant Group
- Chairman for the Ngāti Kahungunu Ki Wairarapa Tāmaki-nui-a-Rua Investment Trust
- Chairman for Kaitoke Marae



# Kahungunu Asset Holding Company Ltd

## Directors



**Heather Te Au – Skipworth**  
*Independent  
Representative*

- Chief Executive Iron Māori
- HB District Health Board Member
- Pania Reef Fisheries Ltd
- Takitimu Seafoods Ltd
- Deputy Chair HB District Health Board Māori Relationship Board



**Jonathan Dick**  
*General Manager*

- Appointed General Manager 1st February 2017
- Former Director-Pouarataki, Environment & Natural Resources for Ngāti Kahungunu Iwi Incorporated
- Previous roles include work on resource and fisheries management and Treaty of Waitangi historical settlements work



Opening of Takitimu Seafoods - 8 April 2019

# Ngāti Kahungunu Iwi Incorporated Summary Financial Statements

FOR THE YEAR ENDED 30TH JUNE 2019

## CONSOLIDATED SUMMARY STATEMENT OF FINANCIAL PERFORMANCE

|   | Consolidated     |                  | Parent           |                  |
|---|------------------|------------------|------------------|------------------|
|   | 2019<br>\$       | 2018<br>\$       | 2019<br>\$       | 2018<br>\$       |
| <b>INCOME</b>   |                  |                  |                  |                  |
| Administration & Other<br>Operating Revenue               | 2,585,076        | 2,462,676        | 1,050,696        | 1,112,053        |
| Hi Ika Revenue  | 3,821,435        | 3,467,373        | -                | -                |
| Mauri Ora Revenue   | -                | 55,913           | -                | 55,913           |
| Dividend Revenue  | 1,019,824        | 1,106,577        | 2,355,000        | 1,894,470        |
| Dividend Revenue - In advance                             | -                | -                | -                | 600,000          |
| Takitimu Seafoods<br>Operating Income                     | 3,575,712        | -                | -                | -                |
| Share of Surplus (Deficit)<br>Associates & Joint Ventures | (1,138,915)      | (1,181,950)      | -                | -                |
| <b>Total Operating Income</b>                             | <b>9,863,131</b> | <b>5,910,589</b> | <b>3,405,696</b> | <b>3,662,436</b> |
| Admin & Other<br>Operating Expenses                       | 1,611,203        | 1,670,525        | 1,159,441        | 1,176,367        |
| Hi Ika Revenue  | 289,315          | 336,621          | -                | -                |
| Communication   | -                | -                | -                | -                |
| Hauora  | 54,279           | 186,428          | 54,279           | 186,428          |
| Mauri Ora   | 2,029,409        | 1,620,737        | 2,029,409        | 1,620,737        |
| Governance  | 918,833          | 829,977          | 427,359          | 463,264          |
| Finance   | 293,965          | 343,952          | -                | -                |
| Takitimu Seafoods<br>Operating Expenses                   | 5,149,307        | -                | -                | -                |
| Total   | 10,346,311       | 4,988,240        | 3,670,488        | 3,446,796        |
| <b>NET SURPLUS (DEFICIT)<br/>AS AT 30 JUNE</b>            | <b>(483,179)</b> | <b>922,349</b>   | <b>(264,792)</b> | <b>215,640</b>   |

## CONSOLIDATED SUMMARY STATEMENT OF MOVEMENTS AND FINANCIAL POSITION

|   |                   |                   |                  |                  |
|---|-------------------|-------------------|------------------|------------------|
| <b>EQUITY</b>   |                   |                   |                  |                  |
| Opening Balance as at 1 July                              | 70,542,835        | 69,720,486        | 3,309,287        | 3,193,647        |
| Net Surplus (Deficit) for the year                        | (483,179)         | 922,349           | (264,793)        | 215,640          |
| Contributions from<br>(Distributions to) owners           | (330,000)         | (100,000)         | (330,000)        | (100,000)        |
| <b>TOTAL EQUITY</b>                                       | <b>69,729,656</b> | <b>70,542,835</b> | <b>2,714,494</b> | <b>3,309,287</b> |
| <b>ASSETS</b>   |                   |                   |                  |                  |
| Total Non-Current Assets                                  | 73,751,422        | 69,269,793        | 2,716,466        | 2,797,669        |
| Total Current Assets                                      | 6,762,125         | 9,029,379         | 895,601          | 1,262,300        |
| <b>TOTAL ASSETS</b>                                       | <b>80,513,547</b> | <b>78,299,172</b> | <b>3,612,067</b> | <b>4,059,969</b> |
| <b>LIABILITIES</b>  |                   |                   |                  |                  |
| Total Current Liabilities                                 | 2,768,911         | 856,338           | 897,572          | 750,680          |
| Total Non-Current Liabilities                             | 8,014,980         | 6,900,000         | -                | -                |
| <b>TOTAL ASSETS/LIABILITIES</b>                           | <b>10,783,891</b> | <b>7,756,338</b>  | <b>897,572</b>   | <b>750,680</b>   |
| <b>TOTAL NET EQUITY AND<br/>LIABILITIES AS AT 30 JUNE</b> | <b>80,513,547</b> | <b>78,299,172</b> | <b>3,612,067</b> | <b>4,059,969</b> |

# *Ngāti Kahungunu Iwi Incorporated* *Summary Financial Statements*

FOR THE YEAR ENDED 30TH JUNE 2019

## **STATEMENT OF ACCOUNTING POLICIES**

### **Reporting Entity**

The reporting entity is Ngāti Kahungunu Iwi Incorporated (the Society). The Society is domiciled in New Zealand and is a charitable organisation registered under the Incorporated Societies Act 1908 and the Charities Act 2005.

The financial statements comprising the Society and its controlled entities, Kahungunu Asset Holding Company Limited, Takitimu Seafoods Limited Partnership and Kahutia Limited Partnership, together the "Group", are presented for the year ended 30 June 2019.

These Group Financial statements and the accompanying notes summarise the financial results of activities carried out by the Society and have not been subject to audit. These figures are derived from the full financial statements.

### **Basis of Preparation**

#### **Statement of Compliance**

The Group financial statements have been prepared in accordance with Generally Accepted Accounting Practice in New Zealand ("NZ GAAP").

Ngāti Kahungunu Iwi Incorporated is deemed to be a Public Benefit Entity – a PBEs primary objective is to provide goods and services for community or social benefit.

Ngati Kahungunu Iwi Incorporated as a public benefit not-for-profit entity is eligible to apply Not-for-profit Public Benefit Entity International Public Sector Accounting Standards (PBE IPSAS) on the basis that it does not have public accountability and it is not defined as large. The Board has elected to report in accordance with Tier 2 Not-for-profit PBE Accounting Standards and in doing so has taken advantage of all applicable Reduced Disclosure Regime ("RDR") disclosure concessions. This decision results in the Group not preparing a Statement of Service Performance for both reporting periods.

The Group Financial Statements comply with Public Benefit Entity International Public Sector Accounting Standards ("PBE IPSAS") and other applicable financial reporting standards as appropriate that have been authorised for use by the External Reporting Board for Not-For-Profit and For-Profit entities. Kahungunu Asset Holdings Company Limited has been restated from NZIFRS RDR to PBE IPSAS RDR for Group Reporting. Takitimu Seafoods Limited Partnership has been restated from the Special Purpose Financial Reporting Framework for use by For-Profit Entities 2018 as issued by Chartered Accountants Australia New Zealand to PBE IPSSAS RDR for Group Reporting.

## **SUMMARY OF ACCOUNTING POLICIES**

The significant accounting policies used in the preparation of these financial statements are set out in the full financial statements.

### **SUBSEQUENT EVENTS**

Subsequent to balance date the Company sold 15 Ron Driver Place to a wholly owned subsidiary of Fiordland Lobster Company for \$6,687,500. The proceeds were used to purchase properties at 43 and 45 Pandora Road and 54 Pandora Road, which Takitimu Seafoods Limited Partnership operates from.

# Ngāti Kahungunu Iwi Incorporated Summary Financial Statements

## ABILITY FOR THE GROUPS SIGNIFICANT INVESTMENTS TO OPERATE AS A GOING CONCERN

During the period, the operations of the Group's wholly-owned controlled entity of Takitimu Seafoods Limited Partnership, has reported a loss. Takitimu Seafoods Limited Partnership is reliant on sufficient working capital to lease ACE to supply its operation. Significant upfront costs are required to lease ACE in October 2019 and January 2020. As at 30 June 2019, Takitimu Seafoods Limited Partnership reported working capital was insufficient to fund the required ACE leases. Takitimu Seafoods Limited Partnership is reliant on ongoing working capital support from other entities within the Group, in the event that working capital finance cannot be obtained. Takitimu Seafoods Limited Partnership is also reliant on third parties to supply its operation once the ACE leases are obtained in order to meet the required volume and quality to operate profitably.

During the period, the Group's investment in Pania Reef Fisheries Limited Partnership reported a loss and the Group recognised its 50% share of this loss in these financial statements. Pania Reef Fisheries Limited Partnership's liabilities exceeds its assets. Subsequent to balance date, Pania Reef Fisheries Limited Partnership has generated a profit from the Hoki season during the months of July 2019 through to September 2019. Pania Reef Fisheries Limited Partnership intends to continue operating for the foreseeable future, however this is reliant on future profitable voyages. Pania Reef Fisheries Limited Partnership is reliant on the limited partners not demanding repayment of their advances to Pania Reef Fisheries Limited Partnership, a profitable 2020 fishing season and extension of the ANZ Flexi Facility beyond the existing 31 October 2019 term.

These two matters create a material uncertainty with regard to the continued operations of these investments. In the event that appropriate sources of funding were not able to be established, and the going concern of either of these entities was no longer valid, there would be adjustments necessary to the carrying value of assets and additional liabilities may result. The Trustees believe the going concern assumption for the Group is valid and have reached this conclusion having regard to the circumstances which they consider likely to affect Takitimu Seafoods Limited Partnership, Pania Reef Fisheries Limited Partnership and the Group during the period of one year from the date these financial statements are approved.

These summary Financial Statements cannot be expected to provide as complete an understanding as provided by the full financial statements. An unmodified opinion was issued on the full group financial statements.

Each tribal member is entitled to obtain a copy of the full financial statements upon request. Requests should be made to the Ngāti Kahungunu Iwi Incorporated Director of Smart Services, Ruth Wong – Ngāti Kahungunu Iwi Incorporated, Taikura House, Level 1, 304 Fitzroy Avenue, Hastings. Phone 06 8762718 or toll free 0800 524 864 ext 9. Email [ruth@kahungunu.iwi.nz](mailto:ruth@kahungunu.iwi.nz).

The Ngāti Kahungunu Iwi Incorporated Board authorised the issue of the full financial statements on 8 October 2019.



Chairman - Ngahiwi Tomoana  
8 October 2019



Board Representative - John Barry Heperi-Smith



**Ngāti Kahungunu Iwi**  
INCORPORATED

# Annual Plan 2019-2020

## VISION STATEMENT

“Kahungunu – ki te whaiao, ki te ao mārama”  
“Achieving excellence in all areas of our lives”

---

## MISSION STATEMENT

“Kia maumahara ki te mana āhua ake o Ngāti Kahungunu”  
“Uphold the absolute uniqueness of the living breath of Kahungunu  
and enhance the mana and well-being of Ngāti Kahungunu Iwi”

---

## STRATEGIC OBJECTIVES

Ngāti Kahungunu – Culturally Strong  
Ngāti Kahungunu – Healthy and Vibrant  
Ngāti Kahungunu – Economically Strong  
Ngāti Kahungunu – Global Citizens  
Ngāti Kahungunu – Self Determined  
Ngāti Kahungunu – Healthy Environment  
Ngāti Kahungunu – Making our Mark

# Annual Plan

Ngāti Kahungunu Iwi Incorporated (NKII) recognises the need to review its objectives and align its strategies with the needs of whānau & hapū.

In January 2019 the NKII Board reviewed the 2018-2019 Annual plan to evaluate what we have achieved and carefully assess the best way to drive the organisation forward into the future. The Board identifies the importance of remaining relevant with the current environment and ensuring that our efforts contribute to our 25year vision.

## **The Board Priorities are:**

- Whanau Whaikāinga Housing, Home Ownership, Employment, Education,

On Tuesday 14 May 2019 the NKII Operations team met to receive and discuss the Board priorities and strategic direction. It gave staff who work on the ground, the opportunity to contribute to this annual plan and identify areas where we can improve and work smarter to achieve desired outcomes.

The Operational Structure is based on four units that were created in 2009 to implement the iwi strategies. The units are as follows: (1) Te Reo, Tikanga & Matauranga, (2) Environment and Natural Resources, (3) Te Ara Toiora - Health and Wellbeing, and (4) Smart Services which is the office administration team that includes Finances, Administration, Event and Promotions Management, Iwi Membership Registration, Communications and Board & Executive Assistance.

These are the iwi strategies:

- Te Mahere Rautaki Haumanu i Te Reo Māori me ōna Ngāti Kahungunutanga. Kahungunu, kia eke! - The revitalisation of te reo Māori along with its distinct Ngāti Kahungunu dialectal variations.
- Kahungunu Ki Uta, Kahungunu Ki Tai - Marine and Freshwater Fisheries Strategic Plan; and
- Te Ara Toiora O Ngāti Kahungunu, the Kahungunu Wellbeing Strategy.

The Ngāti Kahungunu Iwi Incorporated Annual Plan describes the key objectives for the 2019-2020 year. These objectives are based on the iwi's seven pou that make up the 25 year vision (2001-2026) (1) Economically Strong, (2) Participating Citizens of the World, (3) Tinorangatiratanga, (4) Making our Mark, (5) Strong, Healthy, Vibrant whānau, hapū, marae, (6) Culturally Strong and (7) Protecting our Environment.

The objective of this plan is that the activities will contribute to enhancing the mana and wellbeing of Ngāti Kahungunu and that at each level of engagement we know and understand our connection to our goals and aspirations as individuals, whānau, hapū and iwi.

---

## **KAHUNGUNU, KIA EKE! STRATEGIC PLAN FOR THE REVITALISATION OF TE REO MĀORI WITHIN NGĀTI KAHUNGUNU**

---

- Plan, lead and manage the Whakamana i Te Pae o Huaki-pōuri Wānanga to support the revitalisation of the pae kōrero and pae karanga throughout Ngāti Kahungunu;
- Plan lead and manage the Māori language revitalisation symposium – Te reo ki tua!, it's goal to increase critical awareness around language planning;

# Annual Plan

- Re-establish the Runanga Mātauranga (Mātauranga Board);
- Co-design educational resources that supports iwi curriculum, and Ngāti Kahungunu language, culture and identity in and through the education sector;
- Refresh the Ngāti Kahungunu education strategy and implementation plan;
- Plan, lead and manage the Ngāti Kahungunu Kura Reo event to capture new speakers and increase proficiency of existing speakers; and
- Keep our iwi members informed.

---

## **NGĀTI KAHUNGUNU NATURAL RESOURCES & ENVIRONMENT KAHUNGUNU KI UTA, KAHUNGUNU KI TAI – MARINE AND FRESHWATER STRATEGIC PLAN**

---

- Advocate for Ngāti Kahungunu objectives and values to be incorporated into natural resources decision making and policy developed by local, regional and central government;
- Develop Ngāti Kahungunu Taiao policy;
- Support hapū to progress hapū management plans to enhance their role as Kaitiaki of the natural resources;
- Develop quality relationships with organisations to assist us to achieve our natural resource objectives which help to build the capacity and capabilities of our people;
- Plan, lead and manage the Fish Hook Summit to give Kahungunu whānau, hapū the opportunity to report their developments to the iwi and to engage with and learn from other kaitiaki in the rohe; and
- Keep our iwi members informed.

---

## **TE ARA TOIORA O NGĀTI KAHUNGUNU KAHUNGUNU WELLBEING STRATEGY**

---

- Establish and consolidate strategic relationships with key central and local government agencies;
- Advocacy for adoption of whānau centric, holistic social sector wide models of practice that uphold whakapapa, oranga whānau, tikanga and Kahungunutanga;
- Facilitate and increase effective interventions and provision that contribute to achievement of strong, healthy, vibrant whanau;
- Develop a Kahungunu standards framework;
- Maintain effective communications through Taiwhenua; and
- Keep our iwi members informed.

---

## NGĀ POU TAUNAKI - SMART SERVICES

---

- Increase the vibrancy and wellbeing of Kahungunu whānau through events by organising and managing Waitangi Day, 7 Matariki events, and the AGM Pa Sports;
- Maintain the iwi registration database and update incorrect information
- Increase the opportunity for Taiwhenua administration of the SQL Database online. Look at ways to allow online updating by individual members;
- Build networks with organisations and seek smarter and innovative ways to deliver benefits to members;
- Continue to provide benefits to members including scholarships, sponsorships, pātaka and other free or heavily discounted services;
- Provide high level secretarial administration services and office systems and encourage paperless, eco-friendly options;
- Improve on our standard processes and implement policies;
- Regularly communicate with whānau through online website, Pānuiki te iwi email, facebook, frequent visits to the Taiwhenua and Taura here where possible, to inform and keep whānau abreast of iwi activities and opportunities for whānau hapu and iwi development;
- Profile Success, Celebrate Kahungunutanga in all forms and at all levels. Increase our media releases of Kahungunu achievements;
- Highlight the iwi's key messages and put them in all communication formats including email signatures, website, and all pertinent communications;
- Use te reo Māori in all communications; and
- Record modern Kahungunu history for future generations.

---

## NGĀ TŪHONOHONOTANGA - POLITICAL

---

- Strengthen our relationship with the hapū claimant groups within the Ngāti Kahungunu rohe;
- Improve Kahungunu representation on local and regional councils;
- Influence policy developed by government agencies, local and regional councils;
- Monitor the performance of these entities based on Kahungunu criteria; and
- Keep our iwi members informed.

---

## TE WHAKATIPU ŌHANGA - ECONOMIC DEVELOPMENT

---

- Develop and progress the economic status of Kahungunu whānau, hapū, iwi by continuing to work with our iwi partners to progress and implement the Ngāti Kahungunu Economic Development Strategy; and
- Keep our iwi members informed.



## 23 November 2019

Ngāti Kahungunu Iwi Incorporated  
Annual General Meeting  
Splash Planet, Grove Road, Hastings

11:00am

### Standard Business

- Hīmene
- Karakia
- Mihi Whakatau
- Apologies
- Maumahara
- Introducing the 2019-2022 Board Members
- Previous Minutes
- Chairman's Report
- Kahungunu Asset Holding Company Report
- Audit Financials
- Appoint Auditor
- Annual Plan 2019-2020
- Questions and Answers
- Hīmene
- Karakia



The Ngāti Kahungunu Iwi Incorporated Board held its first meeting at Waipatu Marae in May 2019. Pictured from top left to right: JB Smith, Mike Paku, Mere Tomoana, Ngahiwi Tomoana, Brian Ruawai-Hamilton, Nigel How, Owen Purcell and Chrissie Hape. Front row from left: Melissa Ihaka, Waiora Rogers, Haami Hilton, Nelson Rangi, Edina Hilton and Naomi Wilson.



Iwi leaders at the opening of Takitimu Seafoods, April 2019.

From left: Hori Reti, Chrissie Hape, Ngahiwi Tomoana and Heather Te Au - Skipworth



Wairoa Board members Katarina Kawana and Naomi Wilson come to Waipatu to meet the Prime Minister.





**Ngāti Kahungunu Iwi**  
INCORPORATED

TAIKURA HOUSE 304 FITZROY AVENUE, PO BOX 2406, HASTINGS 4153, NEW ZEALAND  
PHONE 06 876 2718 • TOLL FREE 0800 KAHUNGUNU (0800 524 864)  
EMAIL: [ruth@kahungunu.iwi.nz](mailto:ruth@kahungunu.iwi.nz)  
WEB: [www.kahungunu.iwi.nz](http://www.kahungunu.iwi.nz)



**AGM 23 NOVEMBER**  
**11AM SPLASH PLANET, HASTINGS**