

Hoea rā



Ngāti Kahungunu Iwi
INCORPORATED

Annual Report 2013 - 2014

Published November 2014

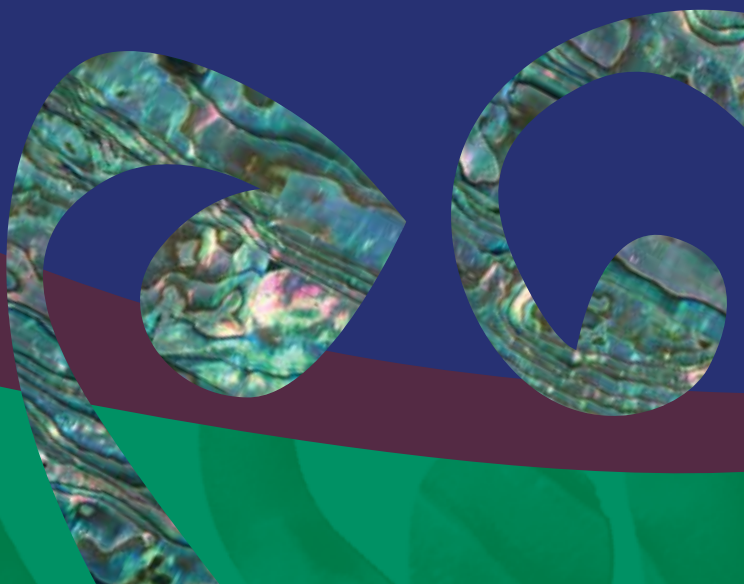


Table of Contents

	Page
Purpose, Vision & Mission	1
Chairperson's Report	2
Chief Executive's Statement	3
Board Members 2013-2016	5
Staff Members 2013-2014	7
Ngāti Kahungunu Iwi Incorporated Organisation Structure	8
Te Reo, Tikanga & Mātauranga	9
Environment & Natural Resources	11
Te Ara Toiora / Health & Wellbeing	13
Benefits to Members	15
Kahungunu Asset Holding Company Ltd Chairman's Report	19
Ngāti Kahungunu Iwi Incorporated Summary Financial Statements	24
Audited Accounts 2013-2014	26
Annual Plan 2014-2015	27
AGM Agenda	31



Purpose, Vision & Mission

Ngāti Kahungunu Iwi Incorporated, with the mandate to represent the people of Ngāti Kahungunu, is the governing body for all aspects of Ngāti Kahungunu Iwi development.

The purpose of Ngāti Kahungunu Iwi Incorporated is to:

- Promote or assist the education of Ngāti Kahungunu Iwi;
- Promote the custody and preservation of the beliefs, customs and language of Ngāti Kahungunu Iwi;
- Promote the social and economic welfare advancement and vocational training of Ngāti Kahungunu Iwi;
- Promote personal, whānau and community health and wellbeing and raise the living standards of Ngāti Kahungunu Iwi;
- Promote high quality communications to and for the benefit of the members of Ngāti Kahungunu Iwi.

Strategic Objectives

In September 2001 consultation with whānau throughout the rohe of Kahungunu occurred. Whānau shared their views, aspirations and desires which helped shape the development of a vision to guide Ngāti Kahungunu into the future. The vision, known as Kahungunu 2026, outlines the vision and mission statements and seven identified strategic objectives to focus on. The Ngāti Kahungunu Iwi Inc. planning framework continues to outline priorities, activities and desired outcomes that link directly to the seven strategic objectives within the Kahungunu 2026 vision.

The seven strategic objectives are:

- Ngāti Kahungunu - Culturally Strong;
- Ngāti Kahungunu - Healthy and Vibrant Whānau;
- Ngāti Kahungunu - Economically Strong;
- Ngāti Kahungunu - Informed and Participating Citizens in the World;
- Ngāti Kahungunu - Independent and Self Determined;
- Ngāti Kahungunu - Healthy, Thriving and Sustainable Environment;
- Ngāti Kahungunu - Making our Mark.

Vision Statement

“Kahungunu - ki te whaiao, ki te ao mārama”
Achieving excellence in all areas of our lives

Mission Statement

“Kia maumahara ki te mana āhua ake o Ngāti Kahungunu”
Uphold the absolute uniqueness of the living breath of Kahungunu
To enhance the mana and well-being of Ngāti Kahungunu Iwi

Reporting

Ngāti Kahungunu Iwi Incorporated has an obligation to provide an 'Annual Report' for its membership to account for the previous financial year 1 July 2013 – 30 June 2014. This document provides a summary report against the objectives set out in the 2013-2014 Annual Plan. It includes steps taken to increase the registration database and provides an overview of the organisation's performance, including changes in the value of its assets, profit distribution and the annual audited financial report.

Chairperson's Report



*Nau mai, haere mai ki tēnei pūrongo ā-tau.
Tēnā koutou.*

*Ahakoā ngā piki me ngā heke, ngā āwhiowhio,
ngā tu o te puehu, ngā taraongaonga me ngā
tūmatakuru i waenga i ngā mahi, ka puta anō hoki
ngā kaupapa hārikoa whakaharahara mō te iwi nei.*

*Nā reira koutou ngā whānau me ngā hoa hoki kua takangaro i te tau,
e mapu nei, e hotuhotu nei te ngākau ki a koutou.*

*Haere ki te okiokinga o te tini me te mano. E kore te pātiki e hoki ki
tona nei kohu, rite tonu ki te rāngai maomao ki tua ki Nukutaurua.*

*Moe mai rā. E te hunga ora, ngā hua o te ure paratī,
ngā tukemata o ngā tīpuna... Tihei Kahungunu!*

The challenges and opportunities have kept coming throughout the year, but first to the challenges! Discussions with our auditors has meant we have had to revalue our shares and quota holdings in Aotearoa Fisheries Ltd (AFL), and have just learnt that our shares in AFL have been devalued by almost \$6 million, due to spectacular non-performance of the company and its 50% owned subsidiary, Sealord Group. While the AFL/Sealord decline has been watched and commented on with interest from here, we did not expect the knock on effect to be so profound on our equity. Adding to the injury, AFL was unable to provide a dividend this year. So in light of KAHC's enhanced performance and the diversifying into Tautane Station, we have found ourselves back where we were five years ago in terms of Share Value in AFL. It is prudent to report this matter upfront.

One of the positive tensions is the land claims within our rohe, remembering that Kahungunu and its predecessor Te Rūnanga o Ngāti Kahungunu, prefaced that hapū would own all of the land claims, to ensure that there will be economic engines at both Iwi and hapū levels, rather than a single claims entity, like all other Iwi. We stand behind that decision, offering to promote, support, or assist these claims in any capacity, without interfering in each claim itself, and as they mature, certain functions, such as resource management, health, education, Te Reo, could naturally flow over to them. This organisation will continue to explore the innovation space that can directly impact on the lives of whānau and mokopuna in education achievement and economic development. As such, we have developed strong relationships with crown and local government agencies, ministers and CEOs, at a local, regional and national levels, to influence direction in policy, regulations and operations, to improve and accelerate services to whānau.

After three years and much consideration, we have decided to pull up our Innovation Hub stakes from Ahuriri on an offer by the Hastings District Council, whom we regard as a quality partner to co-create this innovation space in the centre of Hastings. We have worked with whānau and hapū and have plans and designs to share with you. On the natural resource front, we are still pursuing property rights in freshwater for whānau and hapū at a regional and national level, the Ruataniwha Dam proposal an example of ensuring the rights of all hapū have been respected. Ka tū whakahihi ahau i te pukumahi kia akiaki Te Reo. I am extremely proud of the efforts to revitalise the use of Te Reo, hosting our own Kura Reo throughout the rohe. The Kahungunu events held during the year have provided a unique touchstone to and for our whānau and mokopuna and have created special harbours in trying times.

But once again, I acknowledge the power of the staff and their whānau and the myriad of volunteers that have made this year a success in the face of strong financial crosscurrents. It am pleased to present this annual report to the Iwi and stand accountable for it.

Kā mutu pea te pai o te tau!

Ngāhiwi Tomoana
Tumuaki/Chairman

Chief Executive's Statement



Ngāti Kahungunu, ka tangihia ō mate i roto i te tau kua taha ake nei. Rātau ki a rātau te hunga kua moe. Tātau ki a tātau te hunga kua mahue mai nei ki muri. Ngāti Kahungunu, e hākoako ana te ngākau ki te tuku i tēnei pūrongo ā-tau hai pānui mai mā koutou. Ko tō tātau kaha kai roto i tōtātau kotahitanga. Ki te tapatahi te tū, ka ora; ki te tōtarawāhirua, ka hinga. Kia mau te kotahitanga, Ngāti Kahungunu e!

Operational Update

As I reflect on another extremely busy year in the tari, I contemplate what updates our iwi members would most like to hear about, and how best to convey the large volume of activities undertaken by the talented iwi office and our huge extended team of dedicated whānau and hapū members.

Directors give their own updates later in this report, but a few key highlights are as follows:

- Iconic iwi events, big and small, held across the rohe, fully managed by the iwi e.g. Waitangi Day, Kahungunu Sports Awards and AGM Pā Sports Day; or supported financially, in-kind and/or facilitated by the iwi e.g. Iron Māori, Waiata Music Awards and Matariki;
- Advocacy to ensure that the rangatiratanga of iwi and hapū is recognised and provided for across a range of kaupapa, including a successful outcome from the Tukituki Catchment (Ruataniwha Dam) Board of Inquiry process;
- Development of processes and relationships within the Health & Wellbeing directorate to acknowledge the expertise of iwi members who provide a Kahungunu lens, specialist advice and quality assurance to government business and service provision on behalf of Kahungunu whānau whānui;
- Completion of the review of the Te Reo strategy and the inaugural Kahungunu Te Reo Awards and Kahungunu Kura Reo; and,
- Distribution of over \$100,000 of direct benefits to iwi members, including scholarships and sponsorships to individuals, teams and events.

In terms of the Board priorities and activities, these are already highlighted in the Chair's report and include the following:

- Innovation Hub partnership with Hastings District Council, a revised proposal will be presented at the AGM;
- Development of the Te Matau-a-Māui Voyaging Trust for the iwi waka Hourua which is now established as a separate Trust; and,
- Planning for Ngāti Kahungunu whānau whānui to host Te Matatini 2017.

From a financial perspective, operations have delivered their programmes within the available approved budget, even with the late inclusion of unbudgeted items (e.g. Tukituki Catchment Board of Inquiry).

It is possible to look at all of this activity and wonder, is it all worth it? Does this activity actually convert to outcomes that meet the needs and aspirations of our whānau, hapū and iwi? With the office now running at full speed and with little room for new activities and initiatives to be added, it is time to reflect on what our key strengths and mahi should be. There

Chief Executive's Statement

is plenty of room to be innovative in the way that we work, who we partner with, and our priorities to deliver more to our iwi using the same or less resources.

Planning and Preparing for the Future

Since I was appointed as Chief Executive in October 2013, the whole team, including our Board and Chair, have been contemplating “what is the key role and responsibility of Ngāti Kahungunu Iwi Incorporated?” We don't have our answer yet, but we will continue to explore this over the next year, and welcome your discussion and feedback.

The future of Ngāti Kahungunu is looking very bright, with the Iwi about to head into new and uncharted territory, with the settlement of our hapū land claims over the next few years. Our challenge is to make the most of these opportunities. The Ngāti Kahungunu Iwi Board has indicated that we are ready to discuss our respective roles and responsibilities with all of Ngāti Kahungunu claimants, marae, hapū and whānau, to chart our collective future.

In closing, alongside our iwi Chair I would like to mihi to my colleagues to acknowledge the tremendous work that our tari staff achieve with the support of their whānau and our huge army of marae and hapū members, who for the most part, volunteer their time and expertise. Pakihiwi ki te pakihiwi, kanohi ki te kanohi, together we are making a difference. My special thanks must go to Ngaio Tiuka, who following my appointment to CE and maternity leave, was left to shoulder responsibility for the Fisheries & Environment directorate during one of the most controversial and busy times in our recent history. Thanks also to Jenny Smith who covered during my maternity leave. I feel very fortunate to be part of such a talented and dedicated team. We look forward to the new challenges ahead. Ki te hoe!



Dr Adele Whyte

Kaiwhakahaere Mātua/Chief Executive

Board Members 2013-2016



Haami Hilton

Kaumātua Representative

Ko Kahurānaki te maunga
Ko Ngaruroro te awa
Ko Poukawa te waiū
Ko Kahurānaki te marae
Ko Te Rangikoianake te hapū
Ko Te Whatuiapiti te tangata
Ko Te Hāpuku te rangatira
Ko Takitimu te waka
Ko Ngāti Kahungunu te iwi
Ko Haami Te Kuru Hilton tōku ingoa

Te Whanganui-a-Orotū Taiwhenua Representative

Ko Titi-o-Kura te maunga
Ko Mōhaka te awa
Ko Te Rangihiro te tangata
Ko Te Hāroto te marae
Ko Ngāti Hineuru me Ngāti Kahungunu ngā iwi
Ko Ngāti Paarau me Ngāti Whakaari ngā hapū
Ko Mataatua me Takitimu ngā waka
Ko Karauna Brown tōku ingoa



Karauna Brown



Michael Anthony Paku

Heretaunga Taiwhenua Representative

Ko Kahurānaki te maunga
Ko Ngaruroro te awa
Ko Ruahāpia te marae
Ko Ngāti Hawea te hapū
Ko Takitimu te waka
Ko Ngāti Kahungunu te iwi
Ko Mike Paku tōku ingoa

Te Wairoa Taiwhenua Representative

Ko Moumoukai te maunga
Ko Nuhaka te awa
Ko Tamakahu, ko Te Poho o te Rehu ngā marae
Ko Rākaipaaka te hapū
Ko Takitimu te waka
Ko Ngāti Kahungunu te iwi
Ko Riwai Rill Meihana tōku ingoa



Riwei Rill Meihana



John Barry
Heperi-Smith

Tamatea Taiwhenua Representative

Ko Te Rangi-tapu-ā-whata te maunga
Ko Whatumā te waiū
Ko Takitimu te waka
Ko Te Rongo-a-Tahu te marae
Ko Ngāti Kahungunu te iwi
Ko Ngāi Te Kikiri-o-te-Rangi, ko Ngāi Tahu
Mākakanui, ko Ngāi Toroiwaho ngā hapū
Ko John Barry (JB) Heperi-Smith tōku ingoa

Board Members 2013-2016



Hayden Hape

Kahungunu ki Tāmaki-nui-a-Rua Taiwhenua Representative

Ko Kaitoki te marae
Ko Ngāti Pakapaka te hapū
Ko Takitimu te waka
Ko Ruahine te maunga
Ko Manawatū te awa
Ko Ngāti Kahungunu te iwi
Ko Hayden Hape tōku ingoa



Nelson Rangī

Kahungunu ki Wairarapa Representative

Ko Pāpāwai te marae
Ko Ngāti Moe te hapū
Ko Takitimu te waka
Ko Ngāti Kahungunu te iwi
Ko Nelson Rangī tōku ingoa



Owen Purcell

Taurahere Representative

Ko Kahurānaki, ko Te Mata o Rongokako ngā maunga
Ko Ngaruroro te awa
Ko Ruahāpia te marae
Ko Ngāti Hori, ko Ngāti Hawea ngā hapū
Ko Takitimu te waka
Ko Ngāti Kahungunu te iwi
Nō Kirikiriroa ahau
Ko Owen Purcell tōku ingoa



Noelene Smiler

Taurahere Representative

Ko Whakapunake tōku maunga tipua
Ko Hangaroa, ko Kaitaraha, ko Ruakitūrī ōku awa
Ko Te Reinga tōku marae
Ko Tuarenga tōku whare nui
Ko Hinekōrako tōku wharekai.
Ko Ngāti Kōhatu, ko Ngāti Ruapani, ko Ngāti Hinehika ōku hapū
Ko Ngāti Kahungunu tōku iwi
Ko Takitimu tōku waka
Ko Noelene Mauritania Smiler tōku ingoa

Staff Members 2013-2014

The operational structure for the tari was designed to allow an integrated approach to all activities within the office. Specific units exist in the structure to implement the current iwi strategies. The senior management team meets regularly to align their strategic outputs directly with the annual plan and the overall strategic vision of the iwi.



Dr Adele Whyte
Chief Executive



Jonathan Dick
Director of Environment
and Natural Resources
(Appointed June 2014)



**Jeremy Tātere
MacLeod**
Director of Te Reo,
Tikanga and Mātauranga



Jenny Smith
Director of Health
and Wellbeing



Ruth Wong
Director of Smart
Services and
Communications Advisor



Ngaio Tiuka
Environment and
Natural Resources
Analyst



Alex-Ann Edwards
Te Reo Research
Analyst



**Hamahona
Ambler**
Huakina Mai
Project Manager



Dr James Graham
Kahungunu
Cultural Standards
Project Manager



Connie Collins
Kaitoko Whānau



Lesley Tawhai
Kaitoko Whānau

Smart Services



Kerrin Fair
Database
Administrator



Naina Wātene
Executive
Assistant



Te Rangi Huata
Events &
Promotions
Manager



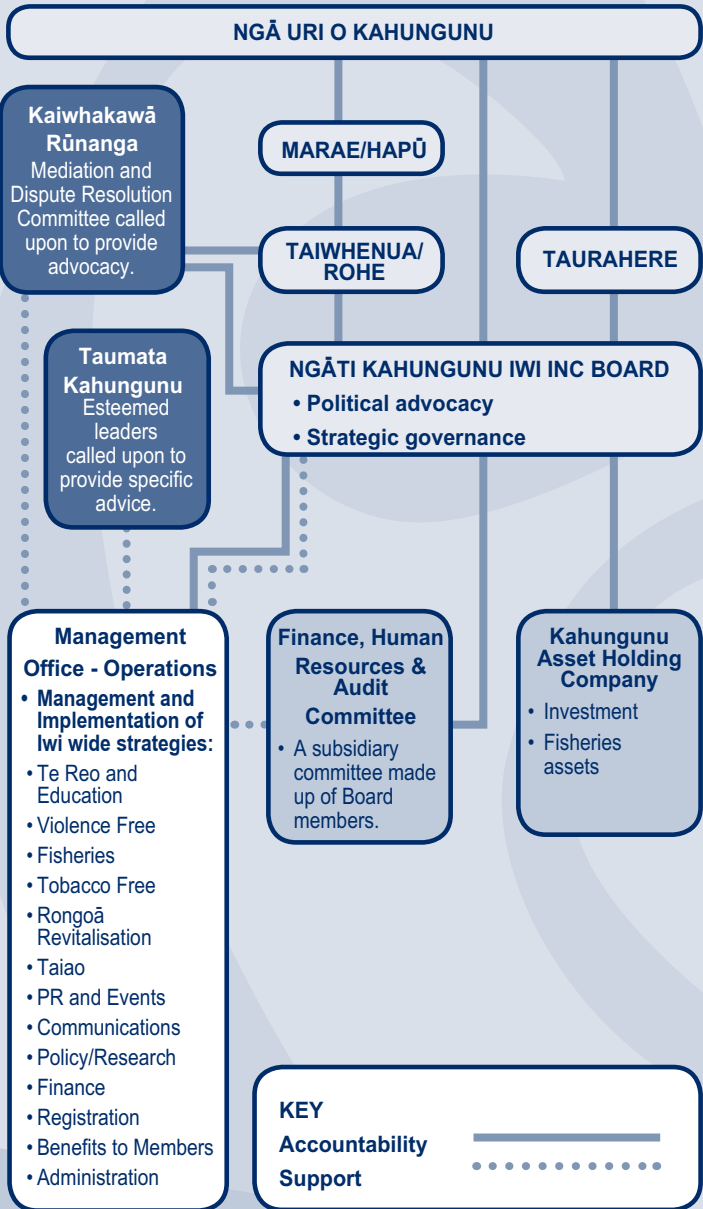
Hine Hape
Finance Officer



Michelle Ferris
Senior
Administrator
& Receptionist

Ngāti Kahungunu Iwi Incorporated Organisation Structure

Ngāti Kahungunu Iwi Incorporated is governed by ngā uri o Kahungunu members who have the opportunity to participate through marae, taiwhenua/rohe and iwi elections. This diagram depicts the structure of the iwi from marae/hapū to governance level.



Te Reo, Tikanga & Mātauranga

Ngāti Kahungunu, ruia te rau tangi i ō tātau mate tuatini o te tau. Tēnā tātau i te āhua ki a rātau e tangihia nei i te ao, i te pō, waihoki, tēnā tātau i a tātau ngā kanohi ora kua mahue mai nei.

Me uua ka kapi katoa i ēnei kupu ruarua noa iho nei te huhua o ngā kaupapa kua tutuki i roto i te tau kua taha ake nei. I konei ka mihi taku ohu whirinaki i ngā hekenga werawera i te tau kua hori ake nei. Me mihi hoki ki a Hamahona Ambler, te kanohi hou i tō mātau wāhanga. Ahakoa kua tau kē tō noho ki waenganui i a mātau, ka tika kia āta mihi koe i konei. Ko te wāhanga e mahi nei ia, ko te Huakina Mai, he kaupapa tēnei i waenganui i te iwi me ngā kura o te rohe.

Kia tīkina atu e au ētahi o ngā kaupapa nui o roto i te tau kua taha ake:

- Ngā Tohu Reo Māori o Ngāti Kahungunu i tū ki Heretaunga i te marama o Hūrae i te tau 2013. 300 ngā tāngata i puta ake;
- Te whakarewatanga o te rautaki whakaora reo Māori hou a Te Kaporeihana ā-iwi o Ngāti Kahungunu i te 6 o Hui-tanguru 2014: Kahungunu, kia eke! Ngāti Kahungunu Māori Language Strategy 2013-2027;
- Te whakatūnga o te wānanga Te Kuhunga ki Te Reo ki Te Kura Reo o Waimārama mā te hunga iti noa nei te mōhio ki te reo Māori. 60 ngā taura i tae ake. He mea whakahaere e Te Ataarangi ki Te Wairoa;
- Te Kura Reo tuatahi o Ngāti Kahungunu i tū mai i te 6 ki te 10 o ngā rā o Oketopa 2013 ki Te Whare Takiura o Te Aho a Māui. 160 ngā taura i tae ake. He mea tautoko tēnei kaupapa e Mā Te Reo rātau ko EIT, ko NKII;
- Te Kura Reo tuarua o Ngāti Kahungunu i tū mai i te 5 ki te 9 o ngā rā o Oketopa 2014 ki Te Wairoa. 180 ngā taura i tae ake. He mea tautoko tēnei wānanga e Mā Te Reo rātau ko Kahungunu ki Wairarapa, Wairoa College, Wairoa Taiwhenua, Wairoa Waikaremoana Māori Trust Board, Kahungunu Executive, Te Taiwhenua o Heretaunga me te Tamatea Taiwhenua;
- Te wānanga Whakamana i Te Pae o Huaki-pōuri i tū mai i te 13 ki te 17 o ngā rā o Hūrae 2014 ki Te Whare Takiura o Te Aho a Māui. 200 ngā taura i puta ake. Nā Creative NZ rātau ko EIT, ko NKII i tautoko kia noho utu kore te wānanga nei, ā, 30 ngā karahipi i tukuna ki ia rohe taiwhenua. Ko te whaikōrero me te karanga ngā kaupapa nui i āta mātaitia, tae noa ki ngā tikanga me te kawa;
- Te haere a Ngāti Kahungunu ki Te Koroneihana tuawaru o Kīngi Tūheitia i te marae o Tūrangawaewae, i Ngāruawāhia. 100 i puta ake hai kanohi mō Ngāti Kahungunu. I hakaina te ngeri i titoa ai e Timoti Kāretu, “Hikitia, hāpainga ake i te tautara”;
- I tohua Te Kaporeihana ā-iwi o Ngāti Kahungunu ki te whiringa whāiti mō Ngā Tohu Reo ā-motu ka tū ki Rotorua ā te 7 o Nōema 2014;
- I mauria atu rā te mauri o Te Panekiretanga o Te Reo ki tōna kāinga hou i te marae o Raroera, i Kirikiriroa. Tekau tau te kaupapa nei e tū ana i Te Whare Takiura o Te Aho a Māui;
- Kua tīmata te āta whakaemi haere i ngā rauemi hai rangahau i Te Reo o Ngāti Kahungunu. Kai te āta kohikohia haeretia i ngā whare pupuri taonga, ngā whare pukapuka, Te Reo Tātaki, ngā uiuitanga kaumātua me te huhua noa atu. Kohikohia ana, ka tīmata rā te āta tātari, te āta ketuketu haere me kore e kitea ētahi āhuatanga o ngā reo o ō tātau kaumātua hai hahu mai, hai whakamahi mā tēnei reanga kōrero Māori;

Te Reo, Tikanga & Mātauranga

- I āta whakapūmautia anō Te Tōpuni Tauwhāinga hai rautaki mātauranga mā Ngāti Kahungunu;
- Ko Ngāti Kahungunu tētahi o ngā iwi i whakaatu i āna mahi i te Hui Mātauranga o Niu Tireni i tū rā ki Pōneke, he kaupapa whakanui i te mātauranga puta noa i te ao.

The Mātauranga arm of our unit continues to:

- Lead Ngāti Kahungunu educational advancement and achievement, and to realise whānau, marae, hapū, haporī, taiwhenua, and iwi aspirations alongside government aspirations manifest in Ka Hikitia: Accelerating Success, the Māori Education Strategy;
- Strengthen the capacity for Ngāti Kahungunu learners and their whānau to achieve educational success as Ngāti Kahungunu through working with and or supporting the taiwhenua of Ngāti Kahungunu Iwi Incorporated to lead education within their respective taiwhenua;
- Support education stakeholders in Ngāti Kahungunu to contribute to raising Ngāti Kahungunu learner outcomes through nurturing partnership relationships across multiple dimensions and contexts including whānau, marae, hapū, taiwhenua, haporī, centres, schools and agencies;
- Work in partnership with our educational partners including the Ministry of Education and its agencies, as well as other Government departments to strengthen and sustain Māori educational achievement in Ngāti Kahungunu; and,
- Develop, implement and evaluate research projects that enhance the mana and wellbeing of Ngāti Kahungunu to realise educational potential and achieve educational success, and thus, to facilitate pathways that provide for Ngāti Kahungunu to be participating citizens of Aotearoa New Zealand, of the world.

Jeremy Tātere MacLeod

Pouarataki/Director, Te Reo, Tikanga & Mātauranga

Environment & Natural Resources

Our Unit has had another busy year! We have focussed on our key role of research, and advocating for the rights and interests of our whānau and hapū. With the appointment of Dr Adele Whyte as the Chief Executive, we were under-staffed for the majority of the financial year. Jonathan Dick was appointed in June 2014 to replace Adele as the Director of Environment & Natural Resources. This role has evolved where the Director is now required to also work closely with the Kahungunu Asset Holding Company (KAHC).

The Board of Inquiry into the Tukituki Catchment Proposal, which included the Ruataniwha Water Storage System, consumed a considerable amount of time and resources of our Unit throughout the year. We are pleased with the stronger environmental protection mechanisms put in place by the Board. More work will be undertaken in relation to this decision, including the development of a suitable 'mauri monitoring framework' for the Tukituki, and the development of an implementation plan in collaboration with hapū to:

- Develop a monitoring programme for the Tukituki catchment; and,
- Develop a water quality and quantity assessment process, which includes freshwater, estuarine and the coastal estuarine habitat, and a process that reflects cultural interests and values, such as kaitiakitanga and mauri.

There are a number of District and Regional Council plan changes that we have continued to monitor throughout the year. We made submissions on the Hastings District Council's proposed district plan, and have lodged an appeal on the Hawke's Bay Regional Council's Plan Change 5. For this appeal, we are seeking greater protection of the ground water quality in the Heretaunga and Ruataniwha aquifers. We will make submissions on District and Regional Council plans and policy statements when relevant, to advocate for our Ngāti Kahungunu values. Other significant submissions of note included a submission to the Ministry of Business Innovation and Employment (MBIE) about petroleum and mineral exploration in our region; a submission on the proposed Local Government amalgamation; and a submission on the National Policy Statement on Freshwater.

We have developed a three year research plan to build our research capability. We will seek assistance with this research plan from wānanga and universities to enter into partnerships that will to assist us to build on our understanding of the environment and natural resources.

Following the successful pāua reseeding programme, we have entered into a contract with the Ministry for Primary Industries (MPI) to enhance hapū capability and capacity to monitor and understand pāua. A series of pāua monitoring wānanga will be held throughout the 2014-2015 year. At the 2014 Fish Hook Summit, we had presentations from Dr Kepa Morgan and his ongoing application of a mauri model; the Ngāti Hinewaka fishing reserve; a presentation from Ngāi Tahu on their fresh water rights; and a presentation on the Wellington Regional Council's co-governance model.

We have continued to support research into turned-mesh-net innovations, to investigate methods that will reduce the rate of juvenile fish mortality, and to reduce the discard rates for commercial trawling. We look forward to the release of this research and the potential impact it may have on improving the sustainability of our fishery.

In March 2014 we held a wānanga with Geo-Nuclear Science, a crown research agency, at Kohupātiki Marae. We undertook a number of field trips to better understand the region's natural resources and natural

Environment & Natural Resources

occurrences, such as earthquakes, land movements, tsunamis, volcanic eruptions, climate and sea level changes. We are planning to hold a similar wānanga in Wairoa later in 2014.

Our “Te Whata a Kahungunu” (pātaka kai) is working well, and we distributed more than 120 boxes of fish throughout the year to whānau for tangihanga.

Key Focus for the Year to 30 June 2015

We will continue with the priorities within our research plan, and ongoing advocacy for our Ngāti Kahungunu values in relation to Te Taiao me Tangaroa. We will progress the activities listed in the “Kahungunu Ki Uta, Kahungunu Ki Tai” Marine and Freshwater Fisheries Strategy, although we will discuss a five yearly review of the strategy at the 2015 Fish Hook Summit.

One of the most significant issues our Unit will need to address during the year is to prepare a Ngāti Kahungunu position on water rights and interests. A significant amount of work is being undertaken at the national level by the Iwi Chairs Forum on this issue. Our Unit is planning to hold wānanga to consolidate our position on Ngāti Kahungunu water rights and interests. These wānanga will build on the work previously undertaken on the Wai wānanga series, and the lessons learnt from the Tukituki Catchment proposal. We will continue to run other wānanga and general hui throughout the year, to share information, and to provide advice on key issues relating to the environment and natural resources.

Jonathan Dick

Pouarataki/Director, Environment & Natural Resources



TE ARA TOIORA Ngāti Kahungunu Wellbeing Strategy

Ngāti Kahungunu Iwi supports strong, vibrant, healthy whānau and hapū.

The focus of the Te Ara Toiora (Kahungunu Health & Wellbeing) Directorate this year has been *‘Whakawhānaungatanga’* - forging strategic alliances and partnerships with government; enabling highly skilled and astute Kahungunu whānau to provide a Kahungunu lens; specialist advice and quality assurance to government and businesses; and service provision for Kahungunu whānau whānui.

Whakawhānaungatanga is a necessity for our Kahungunu Kaitoko Whānau team, consisting of Lesley Tawhai and Connie Collins, facilitating wellbeing pathways to support and enable whānau in need of manaaki. I wish to acknowledge and thank the team for their advocacy, tenacity and diligence for, and on behalf of whānau.

I would like to take this opportunity to thank and acknowledge the advocacy and hard work provided by all our whānau members of the three Strategic Forums, and for their dedication and commitment to the kaupapa of Te Ara Toiora o Ngāti Kahungunu (Ngāti Kahungunu Wellbeing Strategy).

TE ARA TOIORA WĀNANGA - ‘TAKITIMU TE WAKA, KAHUNGUNU TE TANGATA’

Whakarauora Rongoā: Rongoā Revitalisation Forum

Kaumātua: Te Maari Joe & Tiemi Whaanga

- Te Miini Smith & Mārama Tareha Te Hata, Wairoa
- Ruiha Stirling, Ahuriri/Heretaunga
- Frances Reiri Smith, Wairarapa

Tupeka Kore: Tobacco Free Strategy

This Forum is Chaired by Owen Purcell, who is also a Ngāti Kahungunu Iwi Board Member

Whakamoe Patu: Violence Free Strategy

This Forum is Chaired by Ruruhira Tawhai

NGĀTI KAHUNGUNU IWI WHAKAWHUANAUNGATANGA AGREEMENTS

- Sport Hawke’s Bay (Memorandums of Understanding - MoU)
- Hawke’s Bay District Health Board (Memorandums of Understanding - MoU)
- Ministry of Social Development - Child, Youth & Family (Memorandums of Understanding - MoU)
- Quitline (MoU)
- Ministry of Corrections (Terms of Reference - establishment phase)

KAHUNGUNU REPRESENTATION - A KAHUNGUNU VIEW, A KAHUNGUNU KAUPAPA, A KAHUNGUNU MANDATE

I would like to take this time to acknowledge and thank our Kahungunu representatives for their contributions, tautoko and manaaki for Kahungunu whānau whānui, and their advocacy upholding the mana and mana ā ki of Ngāti Kahungunu Iwi.

Te Ara Toiora / Health & Wellbeing

Sport Hawke's Bay

Sport Hawke's Bay Board Iwi Representative is Kevin Tamati

Roopū Manaaki Members (provides advice for the Sport HB Staff) consists of the following:

- Tom Mulligan, Kaumatua
- Kevin Tamati, Chairperson
- Shaun Haraki, Te Taiwhenua o Te Wairoa
- Ropata Te Kuru, Te Taiwhenua o Te Whanganui a Orotu
- Jaamin Pere, Te Taiwhenua o Heretaunga
- Robert Ropiha, Te Taiwhenua o Tamatea

Department of Corrections

- Shayne Walker, National Māori Governance Group

Eastern Institute of Technology

- Tracee Te Huia, Board Member

Te Kāhui Rongoā Inc

- Te Maari Joe, Board Member
- Frances Smiler Edwards, Board Member

Rongoā Tikanga Standards Committee, Standards New Zealand

- Te Maari Joe, Member

Prison Aid & Rehabilitation National Board

- Ngāhiwi Tomoana, Board Member

Health Hawke's Bay (Public Health Organisation)

- Mike Paku, Trustee
- Lewis Ratapu, Trustee

Hawke's Bay District Health Board - Māori Relationship Board

- Tatiana Cowan Greening
- George Mackey
- Trish Giddens
- Patrick LeGeyt
- Kerri Nuku
- Na Raihania
- Lynlee Aitcheson

With the tautoko and manaaki of our Kahungunu whānau, Te Ara Toiora o Ngāti Kahungunu (Ngāti Kahungunu Wellbeing Strategy) has a strong and steady heart beat. I acknowledge and thank the mahi, contributions, dedication and commitment of whānau in progressing Te Ara Toiora o Ngāti Kahungunu - Kahungunu Living Longer, Tihei Kahungunu!

He aha te mea nui o te Ao?

He whānau... he whānau... he whānau.

What is the most important thing in the world?

Whānau, Whānau, Whānau!

Jenny Smith

Pouarataki/Director, Te Ara Toiora/Health & Wellbeing

Benefits to Members

COMMUNICATIONS

Ngāti Kahungunu Iwi Incorporated is committed to communicating with its members and the wider community, to encourage whānau to stay abreast of activities that enhance the mana and wellbeing of Ngāti Kahungunu whānau, hapū and iwi. We are always looking to improve the way we communicate with our people. Earlier this year the organisation said 'Haere Rā' to their 14 year old website, and 'Kia Ora' to their new, exciting, interactive gateway to the future. We have the same website name (www.kahungunu.iwi.nz) and it's user friendly, with easy access to a huge free photo gallery, information about the organisation, the governance board, the staff, benefits to members and more. Facebook has been a hit for the organisation this year. We are the most liked Iwi in the world, with over 6000 likes on our page! We are looking to become paperless in our hui over the next, year as Information Technology continues to progress the unlimited ways we can communicate with each other. If you want to be more informed, contact our office toll free 0800 524 864 or email the Communications Advisor, Ruth Wong by email - ruth@kahungunu.iwi.nz.

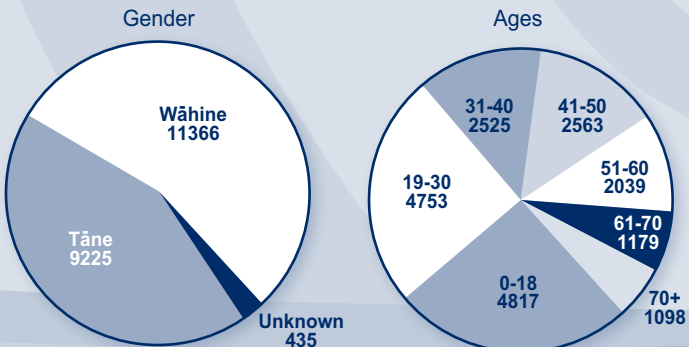
REGISTRATIONS

This year we had an increase of 945 new registrations, 100 more than last year. We currently have a total of 23,626 registered members. Both Heretaunga Taiwhenua and Wairoa Taiwhenua continue to lead in the number of people who register with the iwi and they make up over half the amount of registered members.

Membership Report (14.10.14) including Missing Information

Addresses	Total	No DOB	Incorrect
No Taiwhenua/Taurahere/NMW	719	29	187
Heretaunga	8198	1320	1866
Ngā Parirau O Te Ika	682	12	150
Tāmaki-nui-a-Rua	940	29	221
Tamatea	1045	149	238
Taurahere o te Ao	151	14	47
Te Raki / Tamaki makau-rau	430	9	66
Te Upoko O Te Ika	540	6	89
Te Waipounamu	385	6	63
Wairarapa	2456	272	585
Wairoa	5632	285	1282
Whanganui-a-Orotū	2448	58	584
Grand Totals	23626	2189	5400

Kahungunu - Statistics of Registered Tangata Whenua Members



Benefits to Members

EVENTS

Ngāti Kahungunu Iwi Incorporated strives to produce and sponsor events that strengthen cultural and communal links with a 'whole-of-Ngāti Kahungunu' approach.

Iron Māori 2013, Ahuriri, Napier

Over 2,000 registered participants swam, biked and ran in this life changing experience cheered on by thousands of supporters. At the award ceremony they still had energy to laugh and dance and celebrate their wonderful achievement of hard work and preparation for the one day event. Ngāti Kahungunu Iwi is pleased to be a sponsor of this event inspired by Heather and Wayne Skipworth, Missy and George Mackey with Lee Grace and partner Kiri Bird.

Waiata Māori Music Awards 2013, Hawke's Bay Opera House, Hastings

Staged in September at the Hawke's Bay Opera House, Ngāti Kahungunu Iwi is proud to sponsor this national event that offers a superb platform to honor the achievements of Māori composers and performing artists in fourteen categories, from Best Traditional Māori album to Best Māori Roots Reggae Album. The event is produced by Hastings based Waiata Māori Music Awards Trust.

2013 Kahungunu Sports Awards, Hastings Sports Stadium, Hastings

This flagship event continues to honour the high achievement of Kahungunu sports people. The event drew positive feedback from guests and sponsors who enjoyed an evening of elegance and etiquette in the midst of our Unison Cafe, guest speaker, Global Superstar and Rugby Legend Jonah Lomu.

Kahungunu AGM Pā Sports Day 2013, Splash Planet, Hastings

Once again, we survived another fantastic AGM Pā Sports day. Superb weather greeted a fantastic turnout of 4,500 people passing through the turnstiles at Splash Planet. It was wonderful to welcome seven busloads of whānau from Wellington, Wairarapa, Tāmaki-nui-a-Rua and Wairoa. Our unbeaten champions 'Tāmaki-nui-a-Rua' continue to remain unbeaten.

2014 Kahungunu Waitangi Day – The 'Big 9' Hawke's Bay Sports Park, Hastings

Kai in the Bay at Waitangi Day, Kapa Haka Regionals, Netball, Touch, Volleyball, 3-on-3 Basketball, Ki O Rahi, Werohia Duathlon and our entertainment by FIJI – were the '9' big events that were hosted by Ngāti Kahungunu Iwi Incorporated at the Hawke's Bay Sport Centre.

Matariki 2014

Māori new year celebrations were successfully staged by local volunteer organisers and we continue to see growth in the different areas. Wairoa held a week long event to showcase what Matariki means to them. Hayden Hape and his events team in Tāmaki-nui-a-Rua built on their reputation by celebrating the opening of their new office premises in the morning, hosting a huge breakfast feast and then ending their day with their Matariki event which was jam packed full of famous reggae musicians. They too did a great job raising funds locally for their event. In Wairarapa, Tirau Te Tau and Taiwhenua manager PJ Devonshire put together a wonderful night showcasing exceptional local talent. They successfully raised money from grants and sponsorships. George Reti did an excellent job in organise the very first Te Whanganui-a-Orotū Matariki event held at the Napier Soundshell on Marine Parade. Zack Makoare pulled together a great line up of entertainment and a good programme, which was enjoyed in the beautiful landscaped setting of Te Aute College. Flaxmere's event was another cool night, but as always, attracted a very large crowd of people.

Our Events Commitment

By Kahungunu, For Kahungunu, For Everyone, Forever!

Te Rangi Huata
Pouwhakatairanga / Events Manager

Benefits to Members

SPONSORSHIP

Cultural and sporting pursuits are an important aspect of personal, whānau, hapū and iwi development. For this purpose Ngāti Kahungunu Iwi Incorporated allocates a limited amount of funding toward sponsorship each year. Sponsorships are available all year round, except for the months of June and December.

Individual or Organisation	Name of Event	Value
NZ Māori Music Awards	NZ Māori Music Awards	\$15,000.00
Nga Marae	Nga Pou O Heretaunga Opening	\$1,500.00
Taonga Akuhata-Rameka	NZ Māori Touch Tour	\$500.00
Hunta Marsh	NZ U15 Touch Team	\$500.00
Gabrielle Tomoana	NZ Māori U21 Hockey	\$275.00
Kaapai Manaena	NZ U13 National Basketball Tournament	\$250.00
Savanna Hiha	HB U15 National Hockey Tournament	\$250.00
Te Ataarangi ki Heretaunga	Te Reo Māori Hui	\$500.00
Dena Hale	HB Museum Theatre Gallery Opening	\$500.00
Sport Hawke's Bay	Wairoa Sport Awards	\$345.00
Michael Nuku	2013 World Rafting Championships	\$500.00
Waipawa Buses	Te Papa - Arapata Hakiwai's Powhiri	\$434.78
Karamu High School	NZ Nationals - Womens 7's Tournament	\$500.00
Anecia Wilkie	NZ U17 Girls Basketball Pacific Coast Slam	\$500.00
Peter Wilkie	NZ U17 Boys Basketball Pacific Coast Slam	\$500.00
Maraenui Waka Ama Club	Vaka Elva 2013 10th Anniversary Regatta	\$500.00
Tu Hawaiki	Te Toi A Uru o Te Whare Tu Taua O Aotearoa	\$1,000.00
Black Robin Clothing Ltd	Melbourne Storms 'Kahungunu' Recruitment	\$1,425.00
IronMaori	IronMaori Event	\$10,000.00
Te Whanganui A Orotu	Art Deco Weekend	\$1,000.00
Mayfair School	2013 Primary School Kapa Haka Festival	\$1,000.00
Tiwana Aranui	NZ U19 Junior Blacksox Softball Tournament	\$500.00
Leah Cammell	Performing in the NZ Academy of Highland National Dancing Team	\$500.00
Te Taiwhenua O Heretaunga	Inter Taiwhenua Group Hui	\$1,000.00
Ngatai Huata Whānau Trust	2014 Wipce Conference - Hawaii	\$1,000.00
Karamu High School	National Ki O Rahi Tournament	\$1,000.00
Huia Johnson	2014 World Va'a Waka Sprints in Rio, Brazil	\$500.00
Ash Puriri	2014 Wipce Conference - Hawaii	\$500.00
Guy Priest	2014 Grad Prix Bodybuilding Championships	\$250.00
Lewis Jerard	International Softball Junior Mens World Champs	\$500.00
Ricochet Trampoline Club	Ricochet Invitational Trampoline Comp	\$250.00
HB Māori Teachers Association	2014 Regional Secondary Schools Kapa Haka Festival	\$1,000.00
Raina Ferris	2014 Wipce Conference - Hawaii	\$500.00
Mahaki Akauola	2014 World Va'a Waka Sprints in Rio, Brazil	\$500.00
Aurora Akauola	2014 World Va'a Waka Sprints in Rio, Brazil	\$500.00
Mereana Makea	NZ Juniors White Sox - 2014 Canada Cup	\$500.00
Lilia Wakefield	2014 World Va'a Waka Sprints in Rio, Brazil	\$500.00
Vita Tomoana	Queensland States School Boys U18 Rugby League	\$250.00
Te Matau A Maui Māori Teachers	Nga Manu Korero 2014 National Secondary Schools Competition	\$1,000.00
Karauria Morrell	2014 World Va'a Waka Sprints in Rio, Brazil	\$500.00
Taikura Wakefield	2014 World Va'a Waka Sprints in Rio, Brazil	\$500.00
Aleigha Le Geyt	Showcase Dance Australia	\$500.00
Jordan Stuart	2014 World Va'a Waka Sprints in Rio, Brazil	\$500.00
Jaliegquar Rahiri	2014 World Va'a Waka Sprints in Rio, Brazil	\$500.00
Dionne Harmer-Gemmell	2014 World Va'a Waka Sprints in Rio, Brazil	\$500.00

Benefits to Members

SCHOLARSHIP

Ngāti Kahungunu Iwi Incorporated acknowledges that education is the key to personal, whānau, hapū and iwi development. The iwi provides educational funds to its iwi members to encourage and recognize the pursuit of academic excellence. For this purpose the NKII Board has allocated limited funds to support Ngāti Kahungunu taura. The policy involves a timeline process and a criteria to allow for a filter process for eligibility. Applications for scholarships opened on the 10th of February 2014 and closed on the 10th May 2014. In the 2013-2014 year we received 102 scholarship applications. Thirty (30) taura received the General Scholarship worth \$500.00 each and three (3) taura received the Research Scholarship worth \$5000.00.

This year Ngāti Kahungunu Iwi Incorporated provided Internship opportunities in partnership with the Hawke's Bay District Health Board Turuki programme. This saw a number of applicants indicate their interest in working within an iwi environment to help develop the iwi strategies. During the summer months, two interns joined the staff within the tari to participate in various mahi.

Scholarship recipients

Name	Area of Study	Amount
Brendon Tangiora	Bachelor Social Science with Honours	\$5,000.00
Piata Allen	Master of Education	\$5,000.00
Shannon Martin	Doctorate in Clinical Psychology	\$5,000.00
Catherine Healey	Bachelor of Applied Social Sciences	\$500.00
Maureen Pene	Bachelor of Nursing	\$500.00
Raiha Hine Huata	Masters of Education	\$500.00
Marise Stuart	Bachelor of Medicine & Surgery	\$500.00
Kahurangi Mere Manaena	Bachelor of Nursing	\$500.00
Samuel Joseph Governor	Bachelor of Commerce (Triple Major)	\$500.00
Maia Kereana Connor	Bachelor of Education	\$500.00
Ngarangi Dale Chapman	Masters of Indigenous Studies	\$500.00
William David Grogan	Bachelor of Forestry Science	\$500.00
Reece Joseph	Bachelor of Medicine & Surgery	\$500.00
Jessica Sweetman	Bachelor of Communication	\$500.00
Candis Wishnowsky	Bachelor of Oral Health	\$500.00
Grace Hinemanu Waimarino Allen	Bachelor of Commerce	\$500.00
Kathleen Hawaikirangi	Post Graduate Diploma in Education	\$500.00
Jordan Pearse	Master of Health Psychology	\$500.00
Horiana Fleur Thompson	Bachelor of Health and Science - Midwifery	\$500.00
David Te Aoepi Kara France	BA/LLB Bachelor of Arts/Law	\$500.00
Tiana Rutene	Bachelor of Applied Science	\$500.00
Kaydy Moana Jones	Bachelor of Applied Social Sciences	\$500.00
Johanna Ormond	Bachelor of Laws	\$500.00
Chelsea Cunningham-McLean	Post-graduate Diploma in Physical Education	\$500.00
Waireti Rostenburg	Doctorate in Philosophy	\$500.00
John-James Carberry	Masters Psychology	\$500.00
Glenda Te Rito	Master of Teaching English	\$500.00
Melissa Tina Raharuhi	Development Academy Web. Dev	\$500.00
Bronson Charles Wharehinga	PHD Dr of Philosophy	\$500.00
Elizabeth Pakai	PHD Philosophy (Study of Kindergarten teachers)	\$500.00
Lee Karaitiana	Bachelor of Arts with Honours	\$500.00
Hollie Russell	Master of Arts in Cultural Anthropology	\$500.00
Kelly-aroha Huata	Masters of Arts	\$500.00
Waireti Rostenburg	Te Ara Toiora Intern	\$2,500.00
Anahera Perrett	Te Ara Toiora Intern	\$7,500.00

Kahungunu Asset Holding Company Ltd Chairman's Report



Kahungunu, He tangata ahuwhenua, mōhio ki te whakahaere i ngā mahi o uta me ō tai.

Tihei Kahungunu

It is my pleasure to provide a report of the Kahungunu Asset Holding Company Limited (KAHC) results for the year ended 30 June 2014.

Background

KAHC was established in 2005 by Ngāti Kahungunu Iwi Incorporated (NKII) to receive and manage the Treaty of Waitangi fisheries settlement on behalf of Ngāti Kahungunu.

The KAHC has the vision of building a “successful business and economic profile for Ngāti Kahungunu and a mission of “growing our assets and to maximise the economic and wider returns from them for the collective good of Ngāti Kahungunu.” **To achieve the vision and mission of KAHC we have established four key result areas:**

- Strong Governance and Organisational Robustness
- Fisheries sector
- Diversified asset portfolio
- Quality relationships.

Nature of Business

The business of the KAHC is to receive and manage the fisheries settlement assets and other commercial assets of NKII for maximum commercial benefit. Each year the company agrees its Statement of Intent with the NKII Board, setting the strategic direction and expected returns for the coming year.

There have been no changes to the current makeup of our Directors. I wish to acknowledge the contributions of all our Directors including Mike Paku, Taine Randell, Hayden Hape, Trevor Moeke, and Paora Ammunson. I believe the stability we have enjoyed at the governance level is reflected in the positive results we have endured throughout the financial year.

In June of this year, Jonathan Dick was appointed as the Director of Environment and Natural Resources for Ngāti Kahungunu Iwi Incorporated. This role now includes providing advice and support to the Kahungunu Asset Holding Company. I am confident that through a combination of the experience and business skills of the current Directors and the contributions of our wider team members we will be in a strong position to meet the challenges of the business year ahead.

Fisheries Assets

The key assets owned by KAHC include fishing quota, shares in Aotearoa Fisheries Limited (AFL), shares in Napier Mussels Limited, shares in Fiordland Lobster Company Limited, Tautane Station and cash. The company received the following settlement assets to manage on behalf of Ngāti Kahungunu in accordance with the Māori Fisheries Act 2004:

- August 2006: 162,942,485 quota shares valued at \$9,436,870, 7874 income shares in Aotearoa Fisheries Ltd, valued at \$19,874,733¹
- July 2010: 501,527,278 quota shares valued at \$16,933,500²

¹ The shares in AFL and quota received under the Fisheries Settlement process have been included in the accounts at the value established by Te Ohu Kaimoana on transfer.

² CRA3 quota valued at \$1,617,057 is reserved for settlement with Rongomaiwahine Iwi Trust from this settlement.

Kahungunu Asset Holding Company Ltd Chairman's Report

- September 2012: Aquaculture pre-commencement space settlement cash \$1,499,845
- Cash of \$2,030,106

The company has received a total of 7,874 shares in AFL as part of the fisheries settlement which is a 6.3% holding in AFL. In 2013 we received a bonus issue of 7,874 shares which took the company's holdings in AFL to 15,748 shares. During the year we were required to reassess the valuation of our AFL shareholdings. Unfortunately this revaluation has resulted in a reduction in the value of our share holdings in AFL by \$5,701,535. This has reduced the book value of our AFL shares from \$19,874,735 as reported in 30 June 2013 down to a revised current value of \$14,173,200. When this loss of share value is combined with the lack of an AFL dividend it has a negative impact on our company. It is important to note that this reduction in value is a reflection on the performance of AFL and not the performance of the KAHC.

The company is participating in the current review of Te Ohu Kaimoana, AFL, Te Wai Māori Trust and Te Pūtea Whakatupu Trust. Our Company will be seeking greater transparency and accountability from these organisations and the ability of our Directors to influence the direction and performance of these organisations, particularly AFL.

Within the fishing sector the Annual Catch Entitlements (ACE) have been shrinking but we have been able to compensate against this by entering into joint ventures such as our recent agreement with Sealord's Limited.

We will continue to investigate the viability of new business opportunities in the fisheries sector. An example of this is illustrated by our participation in a working group to assess the feasibility of fishing surf clams in the Area 2 fishery.

Non Fisheries Assets

The company will continue to diversify its asset portfolio in non-fisheries assets. We will look for non-fisheries investment opportunities in line with our current investment strategy. This approach is also in line with our objective of reducing our exposure to risk by investing too heavily in a single asset class. A successful example of this strategy is the purchase of the Tautane Station in 2013. This property is being held as a long term investment and is currently leased to the Taratahi Agricultural Training Centre (Wairarapa) Trust Board for an annual fee of \$620,000. The company is committed to repaying the mortgage on the Tautane Station by as early as 2017. The company plans to make an annual contribution to development at the Station at a cost of \$50,000 per annum.

Financial Performance

The company has again recorded a before tax profit of \$3,238,465. However with the impairment of our AFL shareholdings we have a deficit before tax of \$2,463,070.

Gross Profit 2007-2014

30-Jun-07	\$1,769,233
30-Jun-08	\$2,458,049
30-Jun-09	\$2,028,815
30-Jun-10	\$2,733,836
30-Jun-11	\$3,409,582
30-Jun-12	\$3,872,548
30-Jun-13	\$5,372,656
30-Jun-14	(\$2,463,070)

Kahungunu Asset Holding Company Ltd Chairman's Report

Retained Earnings 2007-2014

30-Jun-07	\$344,051
30-Jun-08	\$1,402,100
30-Jun-09	\$2,030,915
30-Jun-10	\$3,364,748
30-Jun-11	\$4,983,779
30-Jun-12	\$7,216,327
30-Jun-13	\$10,948,984
30-Jun-14	\$6,845,914

Equity 2008-2014

30-Jun-08	\$33,742,051
30-Jun-09	\$34,370,866
30-Jun-10	\$52,222,903
30-Jun-11	\$53,992,484
30-Jun-12	\$57,724,877
30-Jun-13	\$61,457,534
30-Jun-14	\$57,124,464

After payment of the \$1,640,000 dividend to NKII, combined with an additional payment of \$190,000 towards the Kahungunu Innovation Hub and a payment of \$40,000 to the Taiwhenua Assistance Fund, there is a reported decrease in equity of \$4,333,070 for the year ended 30 June 2014.

FINANCIAL PERFORMANCE BY ASSET CLASS

Shares in Aotearoa Fisheries Ltd

The company did not receive any income from AFL during the year. This is primarily due to the recorded loss of \$44.4 million from the Sealord Group Ltd sale of its Argentinian subsidiary Yuken. This is a disappointing result which has had a negative impact on our company's business.

The net book value (NBV) of the company's shareholding in AFL as disclosed in its Annual Report³ was \$19,781,020, a reduction in the capital value of these shares of \$5,701,535 since the shareholding was transferred.

Aotearoa Fisheries Shares NBV

30-Jun-08	19,359,459
30-Jun-09	20,043,676
30-Jun-10	22,547,575
30-Jun-11	24,342,565
30-Jun-12	24,969,398
30-Jun-13	25,456,767 ⁴
30-Jun-14	19,781,020

³ For information on AFL visit their website <http://afl.maori.nz/>

⁴ Based on the AFL annual report to 30/09/2013 the KAHC shareholdings is \$25,482,555. Based on 6.3% calculation. Not actually disclosed.

Kahungunu Asset Holding Company Ltd Chairman's Report

Shares in Fiordland Lobster Company Ltd

The company owns 131,590 shares in Fiordland Lobster Company Limited (FLC). This represents a 5.74% holding in FLC. These shares have been included in the company accounts at cost. The net book value of the company's shareholding in FLC as disclosed in its Annual report as at 31 March 2014 was \$5,934,847 (31/3/12: \$5,087,409).

Fiordland Lobster Dividend

30-Jun-08	\$45,000
30-Jun-09	\$91,431
30-Jun-10	\$120,590
30-Jun-11	\$144,749
30-Jun-12	\$159,224
30-Jun-13	\$159,224
30-June-14⁵	\$263,180

Fiordland Lobster NBV shares

30-Jun-08	1,136,064
30-Jun-09	1,788,061
30-Jun-10	2,658,504
30-Jun-11	3,733,886
30-Jun-12	4,297,351
30-Jun-13	5,087,409
30-Jun-14	\$5,934,847

Quota - ACE sales

The bulk of the company's earnings from the sale of Annual Catch Entitlement (ACE) derive from the quota.

ACE Sales

30-Jun-07	1,983,963
30-Jun-08	2,755,961
30-Jun-09	2,551,163
30-Jun-10	3,163,240
30-Jun-11	3,153,147
30-Jun-12	3,300,792
30-Jun-13	3,276,042
30-Jun-14	3,309,567

Shares in Napier Mussels Ltd

The company now holds a 91% shareholding in Napier Mussels Ltd (NML). The company acquired an additional 41% in the period at nil cost. It is not viable to develop the farm at this time but it is important to maintain the resource consents associated with the marine farming space. The shares and advances totaling \$76,375 are recorded at a nil value as they do not currently have a realisable value.

⁵ Dividend to be paid in December 2014

Kahungunu Asset Holding Company Ltd Chairman's Report

Shares in Area 2 Finfish Management Company Limited

The company holds 1 share in Area 2 Finfish Management Company Limited (Area2). This represents a 2.56% holding in that company. These shares have been included at cost. The net book value of the company's share in Area2 is disclosed in its Annual report at 31 March 2013 was \$570.

Shares in Trident Systems General Partner Limited

The company acquired 3,705 shares in Trident Systems General Partner Limited (Trident) during the year. This represents a 1.18% holding in that company. These shares have been included at cost. The net book value of the company's share as disclosed in its annual report at 31 July 2014 was \$10 (31/3/2013: \$285).

Shares in KAHC Investments Limited

The company owns 100 shares in KAHC Investments Limited. This company has not traded during the year.

Constitutional reporting

During the year to 30 June 2014 there have been no:

- Sales or exchanges of settlement quota;
- Transactions with settlement quota that have resulted in a registered interest by way of caveat or mortgage being placed over the quota;
- Interest registered against the settlement quota shares;
- Sales or exchanges or acquisitions of AFL income shares.

Going Forward

The KAHC continues to enjoy a close working relationship with the NKII Board. There will always be significant challenges in managing settlement assets for the benefit of our shareholder but I believe we have got a good mix of skills, expertise and sound business knowledge to rise to any challenges that will face us in the coming business year. We will also continue to seek partners who are either Kahungunu fishers or are Kahungunu based to ensure our business is of benefit to our community.

Finally, I believe our result for the year is pleasing given some of the challenges we have had to contend with. I am pleased to offer the attached statement of financial performance for your consideration.

Tihei Kahungunu!



Rangī Manual
Chairman

Ngāti Kahungunu Iwi Incorporated Summary Financial Statements

FOR THE YEAR ENDED 30TH JUNE 2014

Summary Statement of Financial Performance

	Consolidated*		Parent*	
	2014 \$	2013 \$	2014 \$	2013 \$
INCOME				
Dividend	263,180	2,583,263	1,870,000	1,640,000
Other income	5,038,848	5,024,460	947,673	1,215,440
Total Operating Income	5,302,028	7,607,723	2,817,673	2,855,440
LESS EXPENDITURE				
Administration and Other Operating	1,213,231	1,158,304	678,433	673,393
Directorate Expenses	1,996,537	1,637,390	1,579,177	1,269,542
Governance	766,006	939,540	602,273	772,655
Investment Writedown	1 5,701,535	-	-	-
Total Expenses	9,677,309	3,735,234	2,859,883	2,715,590
Net Surplus/(Deficit) for year	(4,375,281)	3,872,489	(42,210)	139,850

Summary Statement of Movements in Equity

Opening Equity as at 1 July	63,289,118	59,646,629	4,031,606	4,121,754
Net Surplus/Deficit for the year	(4,375,281)	3,872,489	(42,210)	139,852
Total recognised revenues & expenses	(4,375,281)	3,872,489	(42,210)	139,852
Contributions from/ Distributions to owners				
Less: Taiwhenua/ Taura here distribution	(240,000)	(230,000)	(240,000)	(230,000)
	(240,000)	(230,000)	(240,000)	(230,000)
Closing Equity as at 30 June	58,673,837	63,289,118	3,749,396	4,031,606

Summary Statement of Financial Position as at 30 June 2014

ASSETS				
Total Non-Current Assets	60,947,036	66,734,901	2,810,438	2,797,624
Total Current Assets	11,457,587	13,131,428	7,601,164	7,333,342
TOTAL ASSETS	72,404,623	79,866,329	10,411,602	10,130,966
LIABILITIES				
Total current liabilities	2 6,615,787	6,347,212	6,547,203	5,869,358
Total term liabilities	7,115,000	10,230,000	115,000	230,000
TOTAL LIABILITIES	13,730,787	16,577,212	6,662,203	6,099,358
Total Equity	58,673,837	63,289,118	3,749,397	4,031,607
TOTAL EQUITY AND LIABILITIES	72,404,624	79,866,330	10,411,601	10,130,966

This statement should be read in conjunction with the summary statement of accounting policies and notes to the summary financial statements.

* Consolidated means group (Ngāti Kahungunu Iwi Incorporated and Kahungunu Asset Holding Company).

Parent means Ngāti Kahungunu Iwi Incorporated.

Ngāti Kahungunu Iwi Incorporated Summary Financial Statements

FOR THE YEAR ENDED 30TH JUNE 2014

Summary Statement to Accounting Policies

Reporting Entity

Ngāti Kahungunu Iwi Incorporated (the society) is an incorporated society established under the Incorporated Societies Act 1908.

Ngāti Kahungunu Iwi Incorporated has several subsidiary entities. The reporting entity comprises the society and consolidated group of the society and its subsidiaries (the group).

The following Summary Financial Statements have been extracted from the audited consolidated Ngāti Kahungunu Iwi Incorporated Financial Statements dated 21st October 2014. The consolidated summary financial statement was prepared in accordance with New Zealand Generally Accepted Accounting Practice ('NZ GAAP'), as it applies to FRS 43 summary financial statements.

Basis of Preparation

The group qualifies for differential reporting as it is not publicly accountable, and not large in size. The group has taken advantage of all available differential reporting exemptions except for FRS 19 Accounting for GST. The summary of financial statements are presented in New Zealand dollars, which is the group's presentation currency. All amounts have been rounded to the nearest whole dollar.

This summary financial statement cannot be expected to provide as complete an understanding as provided by the full financial statements. An unmodified audit opinion was issued on the full group financial statement.

The summary financial statement has been examined by the auditor for consistency with the full financial statement and their audit report on the summary financial statement has been attached.

Each tribal member is entitled to obtain upon request a copy of the full financial statement. Request should be made to the Ngāti Kahungunu Director of Smart Services – Attention: Ruth Wong email - ruth@kahungunu.iwi.nz; 304 Fitzroy Avenue, Hastings.

The Ngāti Kahungunu Iwi Incorporated Board authorised the issue of the full financial statements on 21st October 2014.

NOTES TO THE SUMMARY FINANCIAL STATEMENTS

1. AOTEAROA FISHERIES LIMITED (AFL) INVESTMENT WRITEDOWN

The impairment expense reflects a revaluation of these shares from \$19,874,735 to \$14,173,200. This approach is consistent with other shareholders of AFL shares.

2. PROVISIONS – RONGOMAIWAHINE TRUST

The provision includes the CRA 3 quota to the value of \$1,617,057 and an amount of \$4,126,107 set aside to settle the dispute with Rongomaiwahine Iwi Trust in accordance with the deed of settlement signed 21 July 2006. The exact amount of the settlement is not known as the dispute is still to be settled.

Further details about the financial performance, financial position and associated policies and notes can be obtained from the full financial statements.



Chairman - Ngaahiwi Tomoana
21 October 2014



Board Representative - Nelson Rangi

Audited Accounts 2013-2014



Report of the Independent Auditors' on the Summary Financial Statements

to the board members of the Ngati Kahungunu Iwi Incorporated

The accompanying summary financial statements on pages 24 to 25 which comprise the summary statement of financial position as at 30 June 2014, the summary statement of financial performance, and the summary statement of movements in equity for the year then ended, and related notes, are derived from the audited financial statements of Ngati Kahungunu Iwi Incorporated (the "Society") and Group for the year ended 30 June 2014. The Group comprises the Society and the entities it controlled at 30 June 2014 or from time to time during the financial year.

The summary financial statements do not contain all the disclosures required for full financial statements under generally accepted accounting practice in New Zealand. Reading the summary financial statements, therefore, is not a substitute for reading the audited financial statements of the Society.

Our audit of the financial statements for the year ended 30 June 2014 was completed on 21 October 2014 and our unmodified opinion was issued on that date. We have not undertaken any additional audit procedures in relation to those financial statements from the date of the completion of our audit and those financial statements and the summary financial statements do not reflect the effects of events that occurred subsequent to the date of our report on those financial statements.

This report is made solely to the members of the Board, as a body. Our work has been undertaken so that we might state those matters we are required to state to them in a report from the auditor and for no other purpose. To the fullest extent permitted by law, we do not accept or assume responsibility to anyone other than the Board members, as a body, for this report, or for the opinions we have formed. In addition, we take no responsibility for, nor do we report on, any part of the annual report not specifically mentioned in our report.

The Board's Responsibility for the Summary Financial Statements

The Society's Board is responsible for the preparation and presentation of the summary financial statements in accordance with FRS-43: *Summary Financial Statements* ("FRS 43").

Auditors' Responsibility

Our responsibility is to express an opinion on the summary financial statements based on our procedures, which were conducted in accordance with International Standard on Auditing (New Zealand) 810: *Engagements to Report on Summary Financial Statements*.

We have no relationship with, or interests in, the Society and Group other than in our capacities as auditors and in the provision of consultancy services. We also perform assurance services for the subsidiary, Kahungunu Asset Holding Company Limited. These services have not impaired our independence as auditors of the Society and the Group.

Opinion

In our opinion, the summary financial statements on pages 24 to 25 have been correctly extracted from the audited financial statements of the Society for the year ended 30 June 2014 and are consistent, in all material respects, with those audited financial statements.

Restriction on Use of our Report

This report has been prepared for inclusion in the annual report. We disclaim any responsibility for reliance on this report or the amounts included in the summary financial statements, for any purpose other than that for which they were prepared.

PricewaterhouseCoopers

Chartered Accountants
21 October 2014

Napier

.....
PricewaterhouseCoopers, 36 Munroe Street, PO Box 645, Napier 4140, New Zealand
T: +64 (6) 835 6144, F: +64 (6) 835 0360, www.pwc.com/nz



Ngāti Kahungunu Iwi
INCORPORATED

Annual Plan 2014-2015

Board Priorities

Ngāti Kahungunu Iwi Incorporated (NKII) recognises the need to review its objectives and align its strategies with the needs of whānau and hapū. The NKII Board acknowledges that maintaining and developing relationships with all our key stakeholders is the major focus of NKII Board for 2014-2015. This will ensure that the three objectives below can be achieved.

United Voice

Ngāti Kahungunu Iwi Incorporated will develop good working relationships with Ngāti Kahungunu whānau and hapū and all of the various entities that represent them so that Ngāti Kahungunu can present a united voice on issues of National importance when required.

Advocate/Monitor

Ngāti Kahungunu Iwi Incorporated will influence policy developed by government agencies, local and regional councils, District Health Boards, Housing etc.

Kahungunu Te Reo and Tikanga

Ngāti Kahungunu Iwi Incorporated has developed a tool to monitor the performance of the entities above based on Kahungunu criteria and is trialling the utilisation of this tool.

Ngāti Kahungunu Iwi Incorporated aspires to have Ngāti Kahungunu Reo spoken and tikanga practised in all places where Kahungunu whānau gather.

ANNUAL PLAN 2014-2015

The Ngāti Kahungunu Iwi Inc annual plan outlined below describes the key objectives for the iwi between July 2014 and June 2015. The activities are based on the following Ngāti Kahungunu Iwi Inc. strategies: He Mahere Rautaki Hai Haumanu I Te Reo O Ngāti Kahungunu / Kahungunu, kia eke - The Revitalization of Te Reo o Ngāti Kahungunu, Kahungunu Ki Uta, Kahungunu Ki Tai - Marine and Freshwater Fisheries Strategic Plan and Te Ara Toiora O Ngāti Kahungunu, the Kahungunu Wellbeing Strategy.

HE MAHERE RAUTAKI HAI HAUMANU I TE REO O NGĀTI KAHUNGUNU STRATEGIC PLAN FOR THE REVITALIZATION OF TE REO O NGĀTI KAHUNGUNU

- Whakamana i te Pae o Huaki Pōuri – Support the revitalization of Ngāti Kahungunu Paepae
- Support projects that improve the quality of reo, and promote the use of unique Kahungunu language
- Research Projects
- Manage the Ministry of Education Kahungunu Cultural Standards (KCS) contract
- Provide cultural support to the Te Ara Toiora and Kahungunu ki Uta, Kahungunu ki Tai Units

NGĀTI KAHUNGUNU ENVIRONMENT & NATURAL RESOURCES KAHUNGUNU KI UTA, KAHUNGUNU KI TAI – MARINE AND FRESHWATER STRATEGIC PLAN

- Implement a plan which enhances and protects natural resources mai i Paritū ki Turakirae
- Establish governance infrastructure mai i Paritū ki Turakirae
- Develop natural resource information system(s), database(s) networks and operational capacity to inform decisions and research needs
- Develop relationships across sectors with interests and influence over natural resource management in the rohe and work towards achieving common goals on local and national management of fisheries and other natural resources
- Develop effective communications
- Supports hapū engagement with natural resource managers and users
- Assist hapū development of rohe moana and hapū management plans to support local management of natural resources
- Assist hapū to develop joint ventures with the Kahungunu Asset Holding Company

TE ARA TOIORA O NGĀTI KAHUNGUNU KAHUNGUNU WELLBEING STRATEGY

Strong, Vibrant, Healthy Whānau & Hapū – TE HAU O TE MAURI, TE HAU O TE ŌRĀ

- To progress the aims of Te Ara Toiora o Ngāti Kahungunu (Health & Wellbeing Strategy for Ngāti Kahungunu) by:
 - Facilitating, brokering and advocating support for Whānau wellbeing
 - Developing wellbeing initiatives and strategies to progress and enhance Whānau & Hapū wellbeing
 - Providing opportunities for Whānau and Hapū to gather knowledge for wellbeing (Wānanga)
 - Creating opportunities to plan for and evaluate the wellbeing of Whānau & Hapū
 - Quantifying measurable and sustainable outcomes of Whānau Hapū wellbeing
- Advance the health and wellbeing of the Ngāti Kahungunu Iwi rohe by providing strategic vision, advice and development of:
 - Tupeka Kore - Kahungunu Tobacco Free Strategy
 - Whakarauora Rongoā – Kahungunu Rongoā Revitalisation
 - Whakamoe Patu - Kahungunu Violence Free Strategy
 - Tū Mai Rā – HBDHB Te Waka Toiora

NGĀI TAUNAKI - SMART SERVICES

- Increase the vibrancy and wellbeing of Kahungunu whānau through events:
 - Six Matariki events Jul 2014 & Jun 2015
 - NK Sports Awards 10 Oct 2014
 - AGM Pā Sports – 29 Nov 2014
 - Waitangi Day – 6 Feb 2015
 - Fish Hook Summit – 26 March 2015
- Increase the registration database by 1000 members:
 - Provide quarterly reports
 - Strengthen opportunities for whānau to self -update through an online register
 - Have a presence at every NKII event
- Improve benefits to members, marae/hapū:
 - Scholarships
 - Sponsorships
 - Pātaka

Annual Plan

- Opportunities – ie free entry into events
- Provide online event management, financial system, communication, database templates
- Meet with the Administrators at each Taiwhenua tari
- Communicate with whānau to inform and keep abreast of activities
- Iwi Website (New and improved)
- Built in database for instant e-pānui
- Online interactive calendar of events
- Media e-releases
- Hōea rā e-newsletter and Calendar of events mailout
- Strengthen the organisations financial systems
- Strengthen internal administrative management for the Chair, CE, the tari and its external groups & sub committees

NGĀ TŌRANGAPŪ POLITICAL

- Strengthen our relationship with the hapū claimant groups
- Improve Kahungunu representation on local and regional councils
- Influence policy developed by government agencies, local and regional councils, District Health Boards, Housing etc
- Develop a tool to monitor the performance of these entities based on Kahungunu criteria

NGĀ WHAI RAWA ECONOMIC DEVELOPMENT

- Improve the economic status of Kahungunu whānau, hapū, iwi
- Develop the Ngāti Kahungunu Economic Development Strategy
- Provide tools to implement the Kahungunu Economic Development Strategy

SATURDAY 29th NOVEMBER 2014

AGM AGENDA

11am-12pm

Standard Business

- Mihi whakatau
- Hīmene/Karakia
- Minutes of AGM 2013
- Maumahara
- Annual Report 2013-2014
- Chairman's Report
- Audited Financial Statements 2013-2014
- Asset Holding Company Report
- Appoint Auditor
- Presentations
 - Innovation Hub Update
 - Freshwater Update
- Hīmene/Karakia

This year the AGM will be held inside the Splash Planet Complex. We are trialling a new way of delivering our Annual General Meeting to allow more people to participate. The hui will be delivered inside the Splash Planet venue instead of in a separate room, and the meeting will be live-streamed onto the internet for our whānau living outside of the rohe or overseas to view. The AGM will be broadcast over loud speakers so that whānau participating in sporting events, can listen to the hui. Some of the hui may be pre-recorded to allow for a more streamlined approach. Whānau are encouraged to submit questions ahead of the day, to allow responses to be factored into the day. Responses to questions will be put onto the iwi website in advance to the meeting.



KAHUNGU WAITANGI DAY
THE BIG
HAERE MAI WELCOME

FRANBERRIES



A collage of photos taken at several Kahungunu events held in 2013-2014.



Ngāti Kahungunu Iwi
I N C O R P O R A T E D

TAIKURA HOUSE 304 FITZROY AVENUE, PO BOX 2406, HASTINGS 4153, NEW ZEALAND
PHONE 06 876 2718 • FAX 06 876 4807 • TOLL FREE 0800 KAHUNGUNU (0800 524 864)
EMAIL: rufh@kahungunu.iwi.nz
WEB: www.kahungunu.iwi.nz

Lodge With
DXMAIL

AGM 29 NOVEMBER
11AM SPLASH PLANET, HASTINGS