

Hoea rā



Ngāti Kahungunu Iwi
INCORPORATED

Annual Report 2022 - 2023

Published November 2023



Table of Contents

	Page
Purpose, Vision & Mission	1
Chairperson's Report	2
Chief Executive's Statement	4
Our Year at a Glance	6
Board Members 2022-2025	8
Staff Members 2022-2023	10
Ngāti Kahungunu Iwi Incorporated Organisation Structure	11
Te Reo, Tikanga & Mātauranga	12
Te Taiao Me Ōna Rawa	14
Te Ara Toiora - Pathway to Wellbeing	17
Smart Services	20
Kahungunu Asset Holding Company Ltd Chairman's Report	27
Kahungunu Asset Holding Company Ltd Directors	31
Ngāti Kahungunu Iwi Incorporated Summary Financial Statements	33
Annual Plan 2023-2024	35
AGM Agenda	39



Purpose, Vision & Mission

Ngāti Kahungunu Iwi Incorporated, with the mandate to represent the people of Ngāti Kahungunu, is the governing body for all aspects of Ngāti Kahungunu Iwi development.

The purpose of Ngāti Kahungunu Iwi Incorporated is to:

- Promote or assist the education of Ngāti Kahungunu Iwi
- Promote the custody and preservation of the beliefs, customs and language of Ngāti Kahungunu Iwi
- Promote the social and economic welfare advancement and vocational training of Ngāti Kahungunu Iwi
- Promote personal, whānau and community health and wellbeing and raise the living standards of Ngāti Kahungunu Iwi
- Promote high quality communications to and for the benefit of the members of Ngāti Kahungunu Iwi

Strategic Objectives

In September 2001 consultation with whānau throughout the rohe of Kahungunu occurred. Whānau shared their views, aspirations and desires which helped shape the development of a vision to guide Ngāti Kahungunu into the future. The vision, known as Kahungunu 2026, outlines the vision and mission statements and seven identified strategic objectives to focus on. The Ngāti Kahungunu Iwi Incorporated planning framework continues to outline priorities, activities and desired outcomes that link directly to the seven strategic objectives within the Kahungunu 2026 vision.

The seven strategic objectives are:

- Ngāti Kahungunu - Culturally Strong
- Ngāti Kahungunu - Healthy and Vibrant Whānau
- Ngāti Kahungunu - Economically Strong
- Ngāti Kahungunu - Informed and Participating Citizens in the World
- Ngāti Kahungunu - Independent and Self Determined
- Ngāti Kahungunu - Healthy, Thriving and Sustainable Environment
- Ngāti Kahungunu - Making our Mark

Vision Statement

"Kahungunu - ki te whaiao, ki te ao mārama"

Achieving excellence in all areas of our lives

Mission Statement

Kia maumahara ki te mana āhua ake o Ngāti Kahungunu

Uphold the absolute uniqueness of the living breath of Kahungunu

"To enhance the mana and well-being of Ngāti Kahungunu Iwi"

Reporting

Ngāti Kahungunu Iwi Incorporated has an obligation to provide an 'Annual Report' for its membership to account for the previous financial year 1 July 2022 – 30 June 2023. This document provides a summary report against the objectives set out in the 2022-2023 Annual Plan. It includes steps taken to increase the registration database and gives an overview of the organisation's performance, including changes in the value of its assets, profit distribution and the summary financial statements.

Chairperson's Report



Kai te ika nui o te tau, e JB, takoto mai i te takotoranga a ō tīpuna mātua. E hoa, ka hotuhotu te manawa, ka maringi noa ngā wai kamo mōu i ngaro nei i te tirohanga kanohi. Otirā ngā mate huhua o te wā kua pikauria e mātou, whakaoti atu rā ki te kāpunipuni wairua, ki te mūnga o te tangata, ki te haumūmūtanga o te marea. Heoi ānō tātou ngā urupā o rātou mā kua mahue mai ki muri, tēnā tātou katoa.

The year started with the biggest cyclone of its kind in recorded history. Gabrielle has been the biggest natural disaster to impact Ngāti Kahungunu in a generation. Seven of our marae communities were devastated, Pōrangahau, Omāhu, Waiohiki, Mōteo, Pētane, Tāngōio and Takitimu along with many other communities throughout greater Hawke's Bay, with losses in property, infrastructure, homes and sadly lives of people. Since the 14th of February when Gabrielle hit there has been a huge outpouring of aroha and manaaki. From whānau bringing their shovels to help dig out silt from homes to the \$1.4m of cash donations and in-kind support from ngā iwi o te motu. Kīngi Tūheitia came to Omāhu and listened to the concerns of the impacted marae. He then flew to Wairoa and Tāngōio to support the response and recovery work. Nei rā te mihi maioha ki a koutou katoa i te kaha manaaki mai ki a mātou.

Ngāti Kahungunu Iwi Incorporated (NKII) has made a huge contribution to the response and recovery efforts post-Gabrielle, along with Civil Defence, PSGEs, Taiwhenua, Councils, and other Community groups. It was key to standing up the Tihei Mauri Ora Welfare Hub that distributed essential supplies to impacted whānau and communities. The recovery and rebuild have been coordinated through the Regional Recovery Unit which is governed by the Matariki Governance Group. I have been representing NKII at these forums. In addition to our regional recovery efforts, I was appointed to the National Cyclone Gabrielle Taskforce. This group is chaired by Sir Brian Roache and is tasked with ensuring there is national consistency in the Government allocation of funding to support economic development and the rebuilding of key infrastructure. The recovery and rebuild will continue for months, if not years to come.

On the 4th of April, the difficult decision was made to close Takitimu Seafoods. This was because the company had lost \$14.9m over the past 3 years and was forecasting another significant loss for the current financial year, despite restructuring 40 staff only eight months earlier. The closure resulted in the loss of 33 jobs. The losses at Takitimu Seafoods have put pressure on the Kahungunu Asset Holding Company's (KAHC) overall financial position. This has resulted in KAHC withholding its annual dividend to the shareholder NKII until such time that it is in a position to pay it. This has limited the ability of NKII to provide benefits to whānau and Taiwhenua. We have not offered scholarships to students this year along with a range of other service cuts. Again we don't have the financial ability to do so. We have a plan to improve the return on our assets so that we can continue to support Iwi aspiration. This plan will be shared by KAHC during its report. I implore our people to be patient and allow our KAHC directors to return our iwi to a stronger financial position. I would like to acknowledge the outgoing KAHC Chair, Trevor Moeke, and directors Barry Wilson and Heather Skipworth for their unwavering commitment to the kaupapa. Nikā te tai o mihi ki a koutou i whakapau werawera kia whakaora ai i tō tātou iwi.

Despite our current financial struggles, I am proud of what Chrissie and the team have been able to achieve. Whether it is Kahungunu Kāinga, Te Ara Matua, Te Reo ki Tua, Matariki ki Kahungunu, the Kahungunu Fishhook Summit etc. we continue to deliver value to our people and the wider community. What is becoming more evident, is that we can partner with other organisations that share our values to achieve the aspirations

Chairperson's Report

of our whānau. Ngāti Kahungunu will soon be in a “post-settlement” era, with only the Ngāti Ruapani settlement to be completed. This year saw the Wairarapa Tāmaki-nui-a-Rua Settlement signed and an apology given from the crown. These are exciting times! Earlier this year we held an inaugural meeting between the NKII Board and Chairs of the settled PSGEs. This was an opportunity to discuss what ‘kotahitanga’ could look like in this post-settlement era. It was a good hui, but only the start of the journey as we look ahead. Te Kāhui Ohanga and Matariki are the current vehicles that are expressing this new working relationship. We continue to seek new ways of working with our Councils as we work through the heavy reform agenda of the current government. Reforms in the RMA, Water Services, Future of Local Government, Climate Change etc. mean that we will need a ‘line of sight’ to what this means for Māori. Fortunately, our membership of the National Iwi Chairs Forum gives us access to capable technicians to help wade through the reams of policy documents that often need submissions in very short timeframes.

Finally, the board plans to undertake a “hīkoi” to each of our Taiwhenua and Taurahere rohe over the next 12 months. The key purpose is to find out what is “top of mind” for our people and to start charting the key priorities for the next 25 year vision for Ngāti Kahungunu. We look forward to having a conversation with you and getting your whakaaro on what the future of Ngāti Kahungunu looks like. Although we have been inundated with Cyclone recovery work, the next Cyclone is that of Kahungunu success and Māori success! There are no banks that can stop this success from flowing throughout our rohe! We will excel in all areas such as health, education, business, Te Reo Māori, environmental protection, sports and the list goes on. This is the time for Kahungunu to shine! Kia kaha, kia māia, kia manawanui kia eke ai tātou ki ngā taumata kāore anō kia eke! Tīhei Kahungunu!



Bayden Barber
Tumuaki / Chair

Supporting our communities after Cyclone Gabrielle



Chief Executive's Statement



*Nei rā ngā mihi manahau kia a tātau katoa,
Ngāti Kahungunu!*

*Tuatahi me tuku mihi ki te hunga, kua riro kei tua
o te ārai*

*E ngā rau o tītapu, he kura tangihia, he maimai
aroha, kei ngā mate huhua o huripari Gabrielle,
ngā mate tārūrū, kua huri kanohi atu, kua huri
tuarā mai, he huihuinga tāngata, he riringi roimata,
he hotunga manawa ka ea te wāhi ki a Aituā.*

*Tēnā e te rangatira John Barry Heperi Smith (JB) e kakapa ana te
manawa, māhau e te Tōtara haemata. Kāore e ārikarika ngā mihi ki a
koe, mōu i ārahi i tō iwi, mōu i tū hei manu taupua mō tō whānau, mō tō
hapori, otirā mō tō iwi. Haere rā, e te tangata mateoha ki ngā iwi katoa.*

Tauāraia te pō, tītoko ko te ao mārāma.

Tēnei te whakamanawa i a koutou te iwi o Ngāti Kahungunu!

Ahakoā ngā raru o tēnei ao hurihuri, i tū pakari, i tū rangatira tonu tātau.

*E te iwi me mauhara, kia whāia te māramatanga me te aroha, kia
tapatahi, kia kotahi rā, tēnā koutou, kia ora tātau katoa.*

As I look back at the journey of the tari in the last 12 months, there are many events both positive and adverse that we have navigated to respond to the needs and the voice of our whānau and to maximise our opportunity to advance towards our strategic pou of “strong, healthy, and vibrant whānau”.

We continue to work alongside of our Te Wero and Crown partners to demonstrate the change required by the Crown through our collective effort in the design and delivery of approaches that enable whānau to recognise their strength and mana, and be owners of their own destiny. This is particularly evident in the following:

- The delivery of Kaiarataki resourced and facilitated through the commissioning partnership between Ngāti Kahungunu Iwi, Te Puni Kokiri and Ara Poutama Aotearoa continues to show what sustainable change for whānau requires;
- The foundation considerations for the design of Te Paerewa in partnership with NZ Police where we are reimagining whānau interface to the provision of care and intervention upfront rather than custody and incarceration. Pivotal to this approach is the creation of Papa Pounamu which is a physical village to provide multi-disciplinary support to whānau;
- Te Ao Marama Court is a Judiciary led and District Court response to the voices of victims and whānau who have over decades called for the transformation of the Court system. Ngāti Kahungunu have an opportunity to shape how this works within Te Matau a Māui as an example of how this can be expanded across our rohe. We are asking whānau to come forward and tell their story so we can incorporate their voices into the design and make it fit for purpose into the future;
- Te Ara Mātua was launched by Minister Davis at Waipatu and is the Iwi response to grievances and mamae expressed by our whānau in the Iwi report ‘Kōrero Mai whānau’ commissioned after the attempted uplift at the Hospital. Te Ara Mātua is a pathway that builds the capability of whānau to support whānau as first responders with the support of the Te Wero partners. We are now at the process mapping stage and will move towards implementation near the end of the calendar year.

Ngāti Kahungunu continues to support whānau who require advocacy for custody and the repatriation of their tamariki and mokopuna to whānau whanui. This work is intensive and requires Crown agencies (including Oranga Tamariki, Police, and Judiciary) and whānau to reflect on their own behaviour and what needs to change to aid the return of tamariki to a safe environment. We have made significant changes in this space with Crown agencies working in tandem to create positive outcomes and the retention or whakahokia te tamaiti ki te whānau whanui.

Chief Executive's Statement

Our Te Kura Family Harm Team led by Chris continues to create a positive difference to how whānau that present with family harm concerns are engaged with and supported by the Police and NGO providers. Family harm is predominantly triggered by financial and housing pressures, alcohol and drugs and we are working with our partners to capture whānau voice, and advocate for the right services that enable whānau to recognise and acknowledge what they need to do to provide a healthy and safe home for our tamariki and mokopuna.

In all of these we need to recognise that this is a journey for whānau, and requires continued commitment, reflection, consideration and care.

Ngāti Kahungunu through the support of the National Iwi Chairs Forum (NICF) was chosen as one of the four Iwi housing prototypes under the Whai Kāinga Whai Oranga fund, which was created in partnership with NICF, Te Puni Kokiri (TPK) and Te Tūāpapa Kura Kāinga (MHUDs). In June 2022 Ngāti Kahungunu Iwi signed a Heads of Agreement with both agencies and then a Programme Development Partnership Agreement in December 2022 to provide 131 houses (mixture of Papakāinga and affordable rentals). The establishment phase was undertaken to recruit a team and create supporting systems that offered the best combination for success and risk mitigation. Kahungunu Kainga (Ngāti Kahungunu Iwi's prototype) requires the support of the whole Tari to connect to whānau, provide communications, coordination, legal and financial support. This is especially so in regards to the additional mahi to facilitate, and provide 100 cabins for temporary accommodation for those whānau displaced by Cyclone Gabrielle. We have been working with impacted hapū to identify whānau and determine the right solution within the fiscal envelope we have been afforded by MHUDs. This has required a considerable effort by the Tari but we now have 40 (papakāinga) houses in various stages of completion with potential for a further 22; as well as proposals for up to 80 affordable rentals, procurement of 90 cabins to date, which Steve and the team are working through.

Underpinning this mahi is the strength of the core tari team led by Ruth. This team's operations have been severely affected by the lack of dividend from our Assets Holding Company. This has particularly impacted on our ability to hold events and provide benefits to our members. We have had to be resilient and resourceful in our mahi so our advocacy is not compromised.

While our tari is small in number, we are an agile, skilled and fleet footed workforce who are connected to our communities, which enables our tari to amplify our responses through our strong and trusting relationships across our rohe. This enables us to navigate through the many challenges we are faced with, some of which I have captured in this report, aided by our ability to advocate as a Te Tiriti partner for the aspirations of our whānau.

Our Taiao team of 1.8 FTEs (Ngaio and Shade) provided analytical support to our initial response to and fronted negotiations with Local and Central Government agencies to inform flood protection and attenuation solutions for those communities exposed to harm by Cyclone Gabrielle. Jeremy's leadership in language revitalisation continues to elevate in influence and our Kura Reo and Te Reo ki Tua continues to attract attention across Aotearoa. The refresh of our Matauranga strategy and its implementation led by Tawehi continues to expand across all our teams and engagements within the tari.

I continue to feel privileged to lead and be a whānau member of this team.

Kia maumahara i tō mana ahua ake o Ngāti Kahungunu ki te whaiāo ki te ao Marama.

Tihei Kahungunu!!!



Chrissie Hape
Kaiwhakahaere Matua - Chief Executive

Our Year at A Glance 2022-2023

Date	Activity
Jul 2022	NKII farewells longest serving iwi leader Ngahiwi Tomoana New Chairman Bayden Barber dives in feet first at National Iwi Chairs wānanga Iwi Event Manager Te Rangi Huata honoured by NZ Events Association for his outstanding contribution to events in Aotearoa
Aug 2022	Iwi leaders visit Latter Day Saint Temple Open House
Sep 2022	Te Reo Ki Tua attracts 1,000 participants – Kua huri te tai! The tide has turned
Oct 2022	Whakatū Freezing workers reunion – 36 year celebration Iwi Kura Reo takes place at EIT Taradale – fully subscribed
Nov 2022	Ironmāori combined quarter and half – 3,500 participants 17th AGM Pā Sports held at Splash Planet Iwi appoints 4 new Kahungunu Asset Holding Company Directors History is made with the dawn opening of Wharerangi Marae
Dec 2022	Ironmāori Toa – full triathlon – 250 participants Ngāti Kahungunu ki Wairarapa Tāmaki nui-a-Rua signs Settlement Claim
Jan 2023	New iwi Te Kura Kaiāwhina joins family harm team - Kim Cook NKII Board meets with Te Kahu Ohanga Board
Feb 2023	Waitangi Day attracts 10,000 attendees throughout the day New Whai Kainga Whai Oranga Project Manager starts – Steve Gordon New secondee from MSD joins iwi partnership mahi – Angel Mason Cyclone Gabrielle takes place. NZ State of Emergency – Many homes flooded 4 Kahungunu teams attend Te Matatini Kapa Haka National Event
Mar 2023	Heretaunga Taiwhenua host Kaumātua Ball at Clubs Hastings Networking takes place to support Cyclone affected whānau
Apr 2023	Te Ara Mātua Pathway Plan is launched at Waipatu Marae
May 2023	New Whai Kainga Whai Oranga Project Kaiārahi starts – Jane Cunningham
Jun 2023	Fish Hook Summit Event – Sold Out fully subscribed The first of 39 Matariki events held in Kahungunu Iwi Matariki Events are planned to take place throughout Kahungunu New iwi Te Kura Coordinator joins family harm team – Nicosia Webster
End of Year stats	Tihei Kahungunu Newspaper – 122nd edition reached 82 whānau received pātaka fish for tangihanga



CYCLONE GABRIELLE

Omahu community representatives Minister Zhane Tāhau Whelan and Kaumātua, Dr Joseph Te Rito blessing our whenua after the devastation of Cyclone Gabrielle



Gail Titi, Wi Ormsby and Brenda Ferguson, Tihei Mauri Ora Emergency Response Team



Board Members 2022-2025



Bayden Barber

Chairman

Ko Te Whanganui-a-Tara te maunga
Ko Waingōngoro te awa
Ko Waimārama te marae
Ko Taupunga te whare
Ko Tiakitai te tangata
Ko Ngāti Kurukuru te hapū
Ko Ngāti Kahungunu te iwi
Ko Tākitimu te waka
Ko Bayden Barber tōku ingoa



Haami Hilton

Kaumātua Representative

Ko Kahurānaki te maunga
Ko Ngaruroro te awa
Ko Poukawa te waiū
Ko Kahurānaki te marae
Ko Te Rangikoianake te hapū
Ko Te Whatuiāpiti te tangata
Ko Te Hāpuku te rangatira
Ko Tākitimu te waka
Ko Ngāti Kahungunu te iwi
Ko Haami Te Kuru Hilton tōku ingoa



Hori Reti

Te Whanganui-a-Ōrotu Taiwhenua Representative

Ko Maungaharuru te maunga
Ko Tūtira te waiū
Ko Te Ngaru te awa
Ko Tangitū te moana
Ko Tāngoio te marae
Ko Hori Reti tōku ingoa



Thompson Hokianga

Heretaunga Taiwhenua Representative

Ko Kahurānaki, Ko Te Awa Putahi oku maunga
Ko Ngaruroro, ko Taurekaitai ngā awa
Ko Mangaroa, Ko Rongomaraeroa, Ko
Kahuranaki ngā marae
Ko Rahunga I te rangi, ko Ngāti Kere, Te
Rangikoianake ngā hapū
Ko Takitimu te waka
Ko Ngāti Kahungunu te iwi
Ko Thompson Hokianga ahau



Nigel How

Te Wairoa Taiwhenua Representative

Ko Taumutu te maunga
Ko Mangapoike te awa
Ko Iwitea te marae
Ko Ngāi Tahu te hapū
Ko Ngāti Kahungunu te iwi
Ko Nigel How ahau

Board Members 2022-2025



Jenny Nelson-Smith

Tamatea Taiwhenua Representative

Ko Ruahine te maunga
Ko Whatumā te waiū
Ko Tukituki, ko Waipawa ngā awa
Ko Pukehou, ko Te Whatuiāpiti, ko Te Tapairu,
ko Mataweka, ko Rongo-a-Tahu, ko Rakautatahi
ngā marae
Ko Ngāi Toro-i-waho rāua ko Ngāi Te Whatuiāpiti
ngā hapū
Ko Takitimu te waka
Ko Ngāti Kahungunu te iwi
Ko Jenny Nelson-Smith tōku ingoa



Hayden Hape

Kahungunu ki Tāmaki-nui-a-Rua Taiwhenua Representative

Ko Kaitoke te marae
Ko Ngāti Pakapaka te hapū
Ko Tākitimu te waka
Ko Ruahine te maunga
Ko Manawatū te awa
Ko Ngāti Kahungunu te iwi
Ko Hayden Hape tōku ingoa



Melissa Ihaka

Kahungunu ki Wairarapa Representative

Ko Takitimu te waka
Ko Rangitūmau te maunga
Ko Ruamāhanga te awa
Ko Ngāti Kahungunu te iwi
Ko Hurunui-o-Rangi te marae
Ko Melissa Ihaka tōku ingoa



Eruera Beattie

Taura here Representative

Ko Whakapunake te taumata
Marama te titiro ki te awa o Wairoa e ripo atu ra
I whakataukitia e ngā tupuna
Ko Wairoa hopupu honengenege matangirau te awa
Ko Takitimu, ko Taihoa, ko Putahi ngā marae
Ko Ngāti Kahungunu ki Te Wairoa te iwi
Ko Eruera Beattie ahou



Brian Ruawai-Hamilton

Taura here Representative

Ko Waikaremoana te moana
Ko Waiau te awa e whāngai nei i te whenua me te tangata
Ko Rangitūmau, ko Te Kuha, ko Arimāwhā ngā marae
Ko Tamaterangi te tangata
Ko Brian Ruawai-Hamilton tōku ingoa

Staff Members 2022-2023



Chrissie Hape
Chief Executive and
Director of Te Ara Toiora



Ruth Wong
Director of Smart
Services and
Communications
Advisor



**Dr Jeremy Tātere
MacLeod**
Director of Te Reo,
Tikanga and
Mātauranga



Ngaio Tiuka
Director of
Environment and
Natural
Resources



Tawehi Munro
Iwi Partnerships
Mātauranga
Manager, Ministry
of Education



Shade Smith
Environment &
Natural Resources
Senior Analyst

Te Ara Toiora Team



Krystal Haimona
Kaiwhakahaere
Hōtaka,
Rangapū Iwi -
Strategic Lead,
Iwi Partnerships



Ana Carroll
Kaitohutohu
Matua,
Rangapū Iwi -
Senior Advisor,
Iwi Partnerships



Melissa White
Kaiwhakahaere
Hōtaka, Rangapū
Iwi - Strategic
Lead, Iwi
Partnerships



Angel Mason
Kaitohutohu,
Rangapū Iwi -
Strategic
Lead Advisor,
Iwi Partnerships

Smart Services Team



Kerrin Fair
Database
Administrator
Office IT Expert



Hine Hape
Finance Officer



Michelle Ferris
Executive
Assistant



Danielle Keil
Special Projects
& Events Support



Te Rangi Huata
Events &
Promotions
Manager



Waiora Kireka
Receptionist/
Administrator

Te Kura - Family Harm Team



Chris Karaitiana
Kaiwhakahaere



Nicosia Webster
Kaiārahi



Kim Cook
Kaiāwhina

Whai Kainga, Whai Oranga - Housing Team



Steve Gordon
Kaiwhakahaere



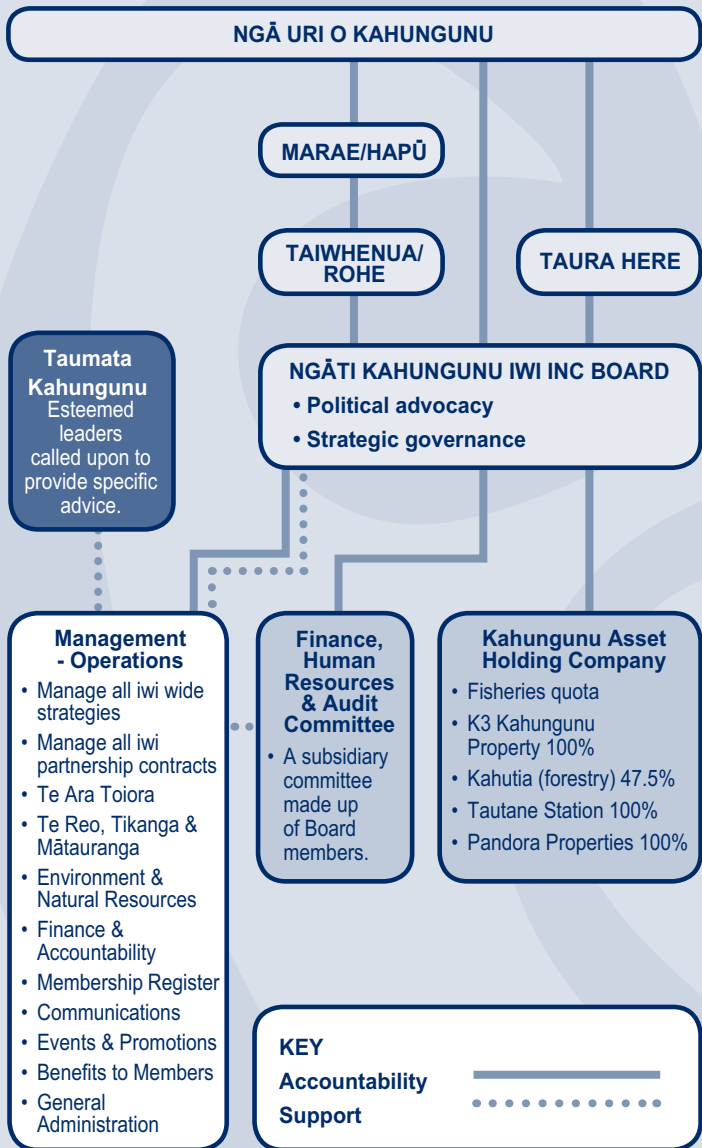
Jane Cunningham
Kaiārahi



Hannah Kupa-Elliott
Kaiāwhina

Ngāti Kahungunu Iwi Incorporated Organisation Structure

Ngāti Kahungunu Iwi Incorporated is governed by ngā uri o Kahungunu through its constitutional organisational structure. This diagram depicts the structure of the iwi from marae/hapū to governance and through to management and workstream level.



Te Reo, Tikanga & Mātauranga

Tau atu, tau mai, karawhiua ana tātau ki te mahi a aituā, he huti mai tāna mahi i tēnei mea, i te tangata, ahakoa ko wai, ahakoa nō hea. Tahanga ana ko tātau ngā mōrehu ki muri, ko tā tātau mahi he auē, he tangi, he poroporoaki. Tēnei rā te tangi ake ki ngā mate nui, ki ngā mate maha i tākotokoto ai ki runga i ngā marae kāinga maha huri noa i te rohe whānui o Ngāti Kahungunu, mai i runga ki raro. Kāore he whānau kotahi i kore nei e pāngia e te mate i tēnei tau nei, nā reira, ka whānui te kōrero mō ō tātau mate, tukuna rātau kia moe i ngā ringaringa atawhai o tō tātau tipuna, o Hine-nui-te-pō. Kāti rā te wāhi ki te hunga kua moe, ka auraki mai ki te hunga ora, kia ora mai rā tātau katoa.

Kātahi te tau ko tēnei kua taha ake nei. Piki mai, heke atu, wero mai, wero atu, tutuki tonu ana ngā mahi. Ka nui te whakapōreareatia o ngā mahi e te āhuatanga ki te mate urutā nāna nei e raruraru nei te ao huri noa, huri noa. Heoi, ka nui rā te hurō i te whakatūnga anō o Te Reo ki Tua me te Kura Reo o Ngāti Kahungunu ka eke nei ki tōna tau tuangahuru. Ko Te Reo ki Tua tētahi kaupapa e hau nei ōna rongō, huri noa i te motu. Ka tae mai te tini ngeangea tau atu, tau mai.

Ko tā Kahungunu tonu ko te whakaaweawe i te hunga ngākaunui ki te reo Māori, koirā te pūtake o ā mātau mahi katoa. E kore hoki e taea e te tari ngā mate katoa o te reo te whakaora mai, koirā i whāiti ai te aronga ki ngā mahi whakapakari toa reo Māori, kia whai whakaihuwaka reo Māori ngā tini kāinga o te iwi. Koirā te huanga mai o Te Pōkaitara, he kaupapa i tautokongia ai e te Kaporeihana o Ngāti Kahungunu, e whakahaerengia nei e Kauwaka. 22 ngā ihu i puta i te rangapū tuatahi o tērā whare makatea, ā, ko tōna whāinga ko te whakatipu i tētahi puna toa reo, tikanga, kawa anō hoki, hai āwhina i ō tātau hapū me ō tātau marae maha. Ka mihi rā ki a Tīmoti mōna i taumarumaru i tērā kaupapa. Kua tere te rangapū tuarua, ā, e tino pai ana te haere.

The Ngāti Kahungunu Mātauranga Strategy Refresh along with the objectives and recommendations continues to progress via the Ministry of Education part-time secondment to the iwi. Authentic Tiriti o Waitangi based relationships with the MOE, education bodies and education institutes (Crown agencies) remains high on our agenda, which supports our constitutional platform and its seven guiding principles.

Two funding contracts with the Ministry have enabled the iwi - through one of its education providers - to deliver Te Reo and Tikanga Māori for education sector staffs, and whānau who have young people learning te reo Māori in Kura Kaupapa Māori and Te Kōhanga Reo. The re-establishment of the Rūnanga Mātauranga has not progressed. This is primarily due to COVID-19, Cyclone Gabrielle and the very sad passing of JB Heperi Smith – our board mātauranga advocate.

Dr. Jeremy Tātere MacLeod
Director of Te Reo, Tikanga & Mātauranga



Pictures taken at the Te Reo Ki Tua and Kura Reo events

Te Taiao Me Ōna Rawa

Ngāti Kahungunu is collaborating with Ngāi Tahu regarding our respective indigenous water rights. Currently, Ngāti Kahungunu has a draft Statement of Claim for the High Court and is working through identifying a few key examples expressing these rights.

The 3 waters reform, splits Ngāti Kahungunu into 3 newly proposed water services areas and entities, entity E, F and G that take over territorial local authority stormwater, drinking water and wastewater responsibilities. The catalyst for these reforms was the Havelock North gastro outbreak, the current process heavily focuses on pipes, processes, and procurement and less on Taiao implications at this stage. There is very little about taiao outcomes and relevance to the Iwi Taiao Unit at this stage.

Amazingly, the irony is the proposed RMA reforms which includes easier pathways to degrade our water quality through rehashed 'averaging' policy and creates conflict with the national policy of Te Mana o Te Wai. We are addressing these conflicts and many others through catchment proposals and plan development, formal proceedings like Environment Court (for the TANK waterways) and informally through discussions and advice to relevant tribal authorities including Taiwhenua. There is a long road ahead if Te Mana o Te Wai and the health and well-being of our waterways is truly a priority in action.

We worked alongside Tamatea tangata whenua in opposing an increase in groundwater takes in Central Hawkes Bay, our collective opposition was upheld in hearing proceedings however, the applicants have appealed to Environment Court.

Typically, Consents and Cultural Impact assessments are not the business of the Iwi Taiao Unit although, we do provide advice and expertise where possible and invited (or insisted). We have invested and worked alongside whānau and hapū (tribal authorities) on improving operations and management via conditions on several consents, including Wairoa Wastewater, Ravensdown storm water and air discharges, and Gravel Extraction for the Tukituki, Ngaruroro and Tutaekuri.

This year's 12th annual Ngāti Kahungunu Fish Hook Summit had its largest attendance ever and the theme was focused on the impacts of Cyclone Gabrielle, with experts and whānau presenting on what happened, the causes and possible solutions.

We are fortunate that our research relationships are meaningful and that we can network and discuss issues like these flood impacts, river, gravel management, water allocation, stop banks with a range of experts so we are better equipped to make informed decisions.

Tangata whenua have long advocated for improved and greater natural management of our waterways such as moving stop banks back and limiting further encroachment on our flood plains; Tropical Cyclone Gabrielle has highlighted greater rationale for this approach that was previously ignored and still might be. We have constantly pushed for restoration and making room for rivers against an entirely western engineering approach that is not fit for purpose, doesn't consider tangata whenua and as we experienced doesn't actually work, including many unintended negative consequences. The Iwi Taiao Unit looks forward to continuing to work alongside Taiao kaimahi as capacity grows, while offering our experience and expertise.

www.kahungunu.iwi.nz/environment--natural-resources

Ngaio Tiuka and Shade Smith

Ngāti Kahungunu Taiao Unit



Pictures taken by our Taiao team reflecting some of the mahi done over the year



Pictures taken by our Taiao team reflecting some of the mahi done over the year.

Te Ara Toiora - Pathway to Wellbeing

In 2001 the Ngāti Kahungunu Iwi Incorporated Board visited all marae in Kahungunu to kōrero with whānau about the future aspirations of the iwi. Information was collated and became the foundation of the Ngāti Kahungunu 25 Year Vision. Over the following 5 years, the Iwi moved quickly into strategic mode and plans were developed to promote the aspirations of the Iwi and enable access to quality health services, quality housing opportunities, quality education, opportunities for employment and cultural development initiatives that would inspire and strengthen whānau wellbeing. In 2007 the Te Ara Toiora Wellbeing Strategy was developed to provide a framework to underpin the 25 year vision and connect the Kahungunu strategies.

Vision/Kaupapa

Strong, Vibrant, Healthy Whānau, Hapū & Iwi.

The aims of Te Ara Toiora o Ngāti Kahungunu

- Whānau in Kahungunu will be healthy, vibrant and enjoy a high standard of living.
- Whānau have access to high quality services.
- Active Whānau are a quality resource for wellbeing.
- Whānau have an increased knowledge (Mātauranga) and understanding of wellbeing.
- Whānau utilise seamless services that contribute to whānau wellbeing.

Te Tumu Whakahaere o Te Wero (Te Wero)

Initially Te Tumu Whakahaere o Te Wero was the name of the group of Māori Health providers who came together to form the Kahungunu Violence Free Strategy hence the name, Te Tumu Whakahaere o Te Wero 'Whakamoe Patu' – lay down your weapons. The group of providers continued to meet and have maintained the shortened name Te Wero. Nowadays Te Wero is known as Kahungunu's health and wellbeing advisory group - a collective made up of health and wellbeing providers from across Hawke's Bay. The services provided by the collective play an important role including care providers, managing homes, health needs and youth support.

Te Kura – Reducing Family Harm & Violence

Te Kura is a Ngāti Kahungunu approach to Whāngaia Ngā Pā Harakeke, which is a New Zealand Police initiative that encourages collaboration with iwi and other agencies to reduce family harm within Māori communities.

The 'Te Kura' Lead Christopher Karaitiana has two new staff members Nicosia Webster and Kim Cook, both of whom are former Department of Corrections employees. The Te Kura kaupapa involves strengthening the partnership with Police, Government agencies and NGO services across the Hawke's Bay region by working collectively to empower whānau to be safe from family harm and violence.

Oranga Tamariki - Whānau in care

Ngāti Kahungunu Iwi has a dedicated staff member who looks at addressing specific Oranga Tamariki inquiries. Several of these cases require weekly intervention, which consists of high level monitoring and communication either at local, regional or national level. Communication with Oranga Tamariki sites often consists of connecting with case site managers, supervisors and social workers to ensure the whānau voice has been heard through hui. In some circumstances, the communication is non-existent and has broken down but with our dedicated staff member we are seeing progress.

Whānau plans need to have adequate resourcing from Oranga Tamariki and service providers who work intensively with them towards achieving whānau aspirations, mana motuhake - the ability to determine their own path in life through self-reliance. Unfortunately, in most cases, there are minimal services to whānau. Our goal is to assist with information and advice to make the journey manageable.

Te Ara Toiora - Pathway to Wellbeing

Family Court matters are costly for whānau and require experienced advocacy to assist them to navigate the Judiciary and Oranga Tamariki system. The Ngāti Kahungunu Strategic Partnership Agreement with Oranga Tamariki is actioned through all cases as a platform to negotiate & navigate assistance for our Kahungunu whānau and tamariki.

There have been some successes for whānau in this space, however, the aim is to move all Kahungunu tamariki out of care. The newly designed way forward 'Te Ara Mātua' looks to being a positive pathway forward.

Te Ara Mātua

Te Ara Mātua is a new and improved way to support whānau through early intervention to limit whānau involvement with Oranga Tamariki. Te Ara Mātua is 1 of 9 prototypes that are being designed throughout the country. Te Ara Mātua responds to the findings of whānau outlined in the 'Kōrero Mai Whānau Report'. In 2019, the 'Kōrero Mai Whānau' project took place at Waipatu Marae and provided a platform for whānau and hapū to share their experiences with maintaining their whānau and interactions with the state. The Te Ara Mātua launch took place on Wednesday 26 April 2023 at Waipatu Marae. Go to our website for more information <https://www.kahungunu.iwi.nz/tearamatua>

Working with the Department of Corrections and Justice System

The work being done with the Department of Corrections is being led by Krystal Haimona – Strategic Lead – Iwi Partnerships, Ngāti Kahungunu Iwi Incorporated.

Te Paerewa

Ngāti Kahungunu Iwi Inc signed a strategic partnership agreement with New Zealand Police in early May 2022. As a starting point our first programme of work focused on preventing whānau from entering into the police system and if being in police care is unavoidable – what does care look and feel like. This mahi has been anchored on the voices of whānau and supported by the pukenga within Te Tumuwhakahaere o Te Wero.

Ara Poutama Aotearoa – Department of Corrections

The partnership between Ngāti Kahungunu Iwi Inc and Ara Poutama is well established. With the support of pukenga across Ngāti Kahungunu Iwi Inc we have developed approaches informed by the voices of whānau and anchored on Kahungunutanga.

Tēnei Au, Tēnei Au

Tēnei Au, Tēnei Au is the tikanga, wānanga and ngakau ora (trauma informed care) approach to supporting tāne while in the high security unit in Hawke's Bay Regional Prison. We are exploring what Tēnei Au, Tēnei Au approach may look like in the community – ie. the integration of a bail support into the kaiarataki service and the development of a cultural framework that will support whānau. Watch this space.

Paiheretia te Muka Tāngata – Uniting the Threads of Whānau

This is a kaupapa that draws on the strengths of the Whānau Ora approach to support tāne Māori who are in the Corrections system. Early 2021, Ngāti Kahungunu Iwi Inc entered into a commissioning relationship with Te Puni Kōkiri and Ara Poutama Aotearoa to pilot the Paiheretia Te Muka Tāngata approach in Te Wairoa, Ahuriri and Heretaunga. As a result, Ngāti Kahungunu Iwi Inc has partnered with, and commissioned Te Tumu Whakahaere o Te Wero (Te Wero) to provide a specialist Kaiarataki navigator workforce to work directly with tāne Māori and their whānau in their journey through the system. Kaiarataki are assisting whānau to build and maintain strong and healthy relationships, plan toward goals, and access the services and support they need.

Te Wero Kaiarataki continue to work with individual whānau members to navigate challenges and work toward their goals. Alongside of Kaiarataki we have a team of Ministry of Social Development Integrated Services

Te Ara Toiora - Pathway to Wellbeing

Case Managers providing quality timely advice and support to the kaupapa.

Oranga Tamariki and Ministry of Social Development Secondees Melissa White and Angelique Mason work tirelessly in this space to manage and monitor progress. Service providers have been resourced and systems influenced to focus on transformational change as whānau determine their own pathways to wellbeing and receive proper guidance and support.

Te Ao Mārama

Te Ao Mārama is a more enlightened approach to justice to help make New Zealand a better place to live in. The District Court of New Zealand Te Kooti a rohe o Aotearoa, is embarking on an historic journey towards Te Ao Mārama in response to decades of calls for transformative change to the courts system. The concept 'Mai Te Pō Ki Te Ao Mārama – meaning the transition from night to the enlightened world is grounded in ancient teachings that continue to have relevance in the modern world.

Te Ao Mārama is a judicially led kaupapa that will improve the experience for all people who participate in the court system, including victims and whānau. The District Court is partnering with iwi to better engage with communities to help design the best way to serve our people's needs. Te Ao Mārama will mean that all people who come to court to seek justice will be seen, heard, understood and be able to meaningfully participate. Te Ao Mārama is inclusive of all people, regardless of their ethnicity or culture, and regardless of who they are or where they are from.

The aspiration for Ngāti Kahungunu Iwi Incorporated is to create a space that enables whānau to move from "Te Ao Tara Aitu – the world of calamity," to a space of "Ki Te Ara Mātua – a pathway of clarity." – ref Moana Jackson Criminal Symposium 1986

Te Ao Mārama kaupapa is the opportunity to reimagine the delivery and structure of the District Court – to uphold the principles of whānau wellbeing that is inclusive of whānau decision making.

See our website for more information <https://www.kahungunu.iwi.nz/teaomarama>

Whai Kainga, Whai Oranga Housing

Housing has been a huge priority for Ngāti Kahungunu Iwi Incorporated (NKII). In June 2022, NKII entered into a Housing Investment partnership with the WKWO Crown agencies, Te Tūāpapa Kura Kāinga - The Ministry of Housing and Urban Development (MHUD), and Te Puni Kōkiri - The Ministry of Māori Development. \$45.3 million was granted to the iwi to achieve their housing plans to build warm healthy and affordable homes for whānau who need them most.

This year the Kahungunu WKWO Housing team was established to manage the Kahungunu housing project with the aim to accelerate papakāinga developments and provide affordable housing to members of the iwi. The WKWO team consists of the Project Kaiwhakahaere - Steve Gordon, the Project Kaiārahi - Jane Cunningham and the newly appointed Project Kaiāwhina Hannah Kupa-Elliott.

Since Cyclone Gabrielle, priorities in our communities, in our regions and in our country have changed with the urgency around housing for those needing temporary accommodation. Recently MHUD's agreed to provide funding to NKII to deliver temporary accommodation for whānau who have been displaced from their home due to Cyclone Gabrielle.

The housing team is capably working simultaneously on the two housing projects, to provide quality, affordable housing and to provide temporary accommodation for Cyclone affected whānau, which at the moment is the priority.

Smart Services

The Smart Services team is the unit at Ngāti Kahungunu Iwi Incorporated (NKII) that provides corporate services to support the functions of the organisation including the Board. We have a relatively small team that consists of the Receptionist/Administrator – Waiora Kireka; the Membership Registration Database and IT expert – Kerrin Fair; the Event Management, Special Projects and Promotions duo, Danielle Keil and Te Rangi Huata; the Finance Officer – Hine Hape; and the Executive Assistant for our Chief Executive, the Chairman and the Board – Michelle Ferris. My name is Ruth Wong and I am the Director of Smart Services and the Communication Advisor. I feel privileged to work with a great team. Our team keeps the tari functioning on a day-to-day basis. We are like the fuel in the tanker, the water in the plants, the conscience of our people, the heart beat of the tari and like the heart, we work behind the scenes to keep the tari alive. We plan meetings, monitor schedules, answer inquiries, pay the bills, provide advice, seek out opportunities that will benefit our members, communicate and share information, plan events that uplift and encourage whānau wellness and we do this from an open office setting based at 304 Fitzroy Avenue, in Hastings.

The 2022-2023 year was a fairly challenging and yet inspiring one for our team and with business as usual, we transitioned into the new financial year quite smoothly considering the activities and changes we endured. 24 June 2022 marked the first time that Matariki was recognised as a Public Holiday. Our event team planned, led and organised a number of Matariki events to mark the occasion that straddled into the New Year. Event Manager Te Rangi Huata has an extensive report to follow. The triennial election of the new NKII Board in April 2022 and the turn of events including the effects of COVID-19, saw the new Board pōhiri take place on the 10th of June, on the same day as the Board induction into their new roles. In July the Board under the new leadership, held their first organised meeting that coincided with a farewell celebration for the former long serving Chairman of the Board, Ngahiwi Tomoana, acknowledging him and his family for 26 years of commitment and dedication to Ngāti Kahungunu. The transition for the new NKII Board under the new Chairman Bayden Barber has continued to evolve throughout the year.

Following the devastation of Cyclone Gabrielle in February 2023, those of our staff who weren't immediately affected by the floods were able to gather in our tari to plan ways to communicate with our people. The iwi office became an international communication hub for registered members and the public both near and far. People made contact with us to share valuable information about their loved ones they could not contact, who were isolated in parts of the flood-affected areas with no communication lines. This information helped our office to inform our Tihei Mauri Ora Emergency Response team to provide resources and support where needed. We are ever grateful for all people, businesses, other iwi, the fantastic army of volunteers, the Tihei Mauri Ora team, the Māori Wardens, the Taiwhenua, kind and caring neighbours, marae and church organisations, everyone's help has been appreciated. In a plea to the wider community for financial donations, we continue to feel overwhelmed by the kindness and love from people all over the world. The smallest financial donation was from a young girl who gave half of her weekly allowance (\$1.50) to support other children. With the power outage in Te Whanganui-a-Orotū, Takitimu Seafoods was able to provide bags of ice to the community to help keep perishable food fresher for longer. Bags of fish were distributed to members in the community.

BENEFITS TO MEMBERS

It has been a very different year for our Smart Services team and the way we provide benefits to our members – which is a key purpose to why we exist. As a team, we are strong enough to cope with the challenges we face and small enough to turn on a dime and change direction when we need to. Part way through our financial year, the iwi owned Fisheries Company Takitimu Seafoods, closed down due to ongoing financial losses for a number of reasons. Evidently, the Kahungunu Asset Holding Company was unable to provide a full dividend to its 100% shareholder, Ngāti Kahungunu Iwi Incorporated. This meant that we had to cease

Smart Services

benefits to members, including sponsorships, scholarships, internship opportunities and some events half way through the year. See below a list of individuals, groups and organisations we helped before closing off sponsorships.

Sponsorship Report

Individual or Group	Amt
National Secondary Schools Kapahaka Festival 2023 – Lanyards	125.00
Taylor Weepu - NZ Junior Girls Rugby Festival	150.00
Troy Dean Skipworth - NZ Men's Netball Nationals Tournament 2022	200.00
Kalani Cardie-Lowe - Pacific Youth Cup Rugby League	200.00
Kopiri Downes-Williams - National Māori Hockey Tournamet	200.00
Amiri Downs-Williams - National Māori Hockey Tournamet	200.00
Makea Solomon Katene - Outward Bound Upbeat	250.00
Saaphyri Bradshaw - Metropolitan East U12 Rugby	250.00
Rhythm Butler-Brown - NZ Māori Rugby Festival – Taupo	250.00
Christopher Karaitiana - Māori Surfing Nationals	250.00
Flaxmere Vaccination Tautoko	359.24
Te Rangihua Henare - IVF Va'a World Elite and Club Waka Ama Sprint Championships	500.00
Zyvayde Tuahine-Robin - 20th World Hip Hop Dance Champs	500.00
Patrick Harding Rimene - IVF Va'a World Elite and Club Waka Ama Sprint Championships	500.00
Hinerau Donna Meihana-Henare - IVF Va'a World Elite and Club Waka Ama Sprint Championships	500.00
Pane Hauraki - NZ Super Heavy Weight Championships	500.00
Kathleen Albrecht-Rimene - IVF Va'a World Elite and Club Waka Ama Sprint Championships	500.00
Ahuriri Houkamau - IVF Va'a World Elite and Club Waka Ama Sprint Championships	500.00
Maddee-Aali Marsh - 20th World Hip Hop Dance Championship	500.00
Zaviar Herrick - NZ Major Sox Men (Under 23) World Cup Argentina	500.00
Tuihana Ropiha - Supremacy Battle Grounds Hip Hop	500.00
Zyleika Pratt-Smith - Junior Panpac Swimming Competition	500.00
Storey Sadler - U15 FIBA Oceania Championship Cup – GUAM	500.00
Keija May Miringaorangi - FIBA Oceania U15 Championships	500.00
Wayne Marsh - World Age Group Trampoline and Tumbling Championships	500.00
Paharakeke U11 Mixed Rugby Team - NZ junior Girls' Rugby Festival	500.00
Maia Bassett - World Supremacy Battlegrounds	500.00
Corban Shane Mita - World Kickboxing Champs – Wales	500.00
Joseph Bassett - World Supremacy Battlegrounds	500.00
Kaylee Crystal Te Koha Rarere - World Supremacy Hip Hop Battlegrounds, Australia	500.00
Sport Hawke's Bay - Marae Fit Award Ceremony	695.00
Paua Scarves - Kaumātua Tautoko	913.04
Robin Fabish - Tamatea High School Matariki Event	1,000.00
Waimarama Marae - Celebration of the Knighthood	1,000.00
Wairoa Ross Shield Rugby Team – Tournament	1,000.00

Individual or Group	Amt
Hastings Girls' High Premier Basketball - NZ Secondary Schools National Tournament	1,000.00
Angela Casha - National Jnr and Youth Dart Championships	1,600.00
Kenny Tahuri - NZ Mens Netball Nationals Tournament 2022	2,400.00
Eventing the Future Event	2,700.00
Camberley Community Event – Whānau Wellbeing	3,000.00
Mafia Dance Family - International Hip Hop Dance Championships	3,500.00
Kahungunu Ahurei - Primary Kapa Haka Festival	4,000.00
LDS Temple Open Day for Kahungunu Leaders	4,496.92
National Secondary School Kapa Haka Competition	5,000.00
Wharerangi Marae Opening	5,000.00
Waiata Māori Music Awards Charitable Trust 2022	10,000.00
Iron Māori Events Limited - IRONMAORI 2022-2023	10,000.00

COMMUNICATION

We have continued to communicate with our iwi membership through our iwi communication platforms, iwi website www.kahungunu.iwi.nz, panui ki te iwi email network, Tihei Kahungunu – our monthly 8 page editorial in Hawke's Bay Today, and our regular posts on our Facebook page. Positive communication helps us to keep whānau informed and updated of up and coming events and opportunities for whānau wellbeing. It also provides an opportunity for us to highlight and celebrate our Kahungunu success stories. Link to our website to view archived editions of Tihei Kahungunu <https://www.kahungunu.iwi.nz/tihei-kahungunu>

REGISTRATION

The iwi registration database increased by 1241 members during this reporting period, taking our overall total of registered members to 39,189. 63% of these new registrations came from Heretaunga and Wairoa Taiwhenua, which hold the largest number of registered members. 19% or 7515 registered members have an incorrect address because whānau frequently move without updating their information. Our team continues to work on updating this information on a daily basis. 4% or 1776 registered members did not have a date of birth & were unable to participate in the triennial iwi Board elections, and 28% or 11249 registered members have an iwi membership card, a 'Benefit to Member' initiative. Our organisation continues to link in with our partners and networks to provide opportunities that will benefit our iwi registered membership.

EVENTS

Ngāti Kahungunu Iwi Incorporated strives to produce and sponsor events that strengthens hauoratanga, whānautanga and Kahungunutanga. With our financial status we accepted the challenge to raise funds for our events. We called on external sources, partnerships, local government and philanthropic grant makers for support, and we were mostly successful.

The **15th annual Waiata Māori Music Awards** was held on September 9, 2022, at the Toitoti Hawke's Bay Arts & Events Centre in Hastings. The event is a national celebration of traditional and contemporary Māori music artists and their compositions in 18 award categories. The 15th annual awards were hosted by TV personality Luke Bird and radio host Krystal Edwards.

Some of the award winners included:

- L.A.B. for Best Māori Pop Album 2.
- Six60 won Radio Airplay Song Of the Year with Pepeha 2.
- Ka Hao & Rob Ruha won Best waiata in Te Reo with 35 2.

Smart Services

- Dr Te Rita Papesch received Iconic Keeper of Traditions Award for her lifetime commitment to kapa haka 2.

Congratulations to all the winners, participants and organisers for making it a memorable event. Ngāti Kahungunu Iwi is always proud to sponsor this national award event in our rohe.

The Kahungunu AGM Pā Sports Day was held on November 25, 2022, at Splash Planet in Hastings. This is the sole event organised specifically for the 39,189 registered members of the iwi combining the AGM with a family day out at Splash Planet – NZ’s only water themed park that offers a wide range of rides and activities for all ages. Thousands of delighted iwi members took advantage of the subsidised \$5 all rides entry as a benefit to Ngāti Kahungunu Iwi members and enjoyed a wonderful whānau day out. The lively AGM meeting, streamed live to iwi members in Aotearoa and Australia was packed with members eager to have their numerous questions answered. The entire day was an event to remember for young and old.

IronMāori, the annual endurance event held in Te Matau a Māui, is a celebration of whanaungatanga and manaakitanga. The event was first held in 2009 with the aim of encouraging more Māori to participate in endurance sports events, but it is not restricted to people of Māori descent. The event has grown in popularity over the years, with participants coming from around the country to take part.

In November/December 2022, Ahuriri, Napier hosted the IronMāori Quarter and IronMāori Half on the same day. The swim lap course was located in the sheltered area of Ahuriri on the Pacific Ocean. The bike course covered a distance of 90km taking participants past the port to Cape Kidnappers, offering stunning views of the Pacific Ocean. The run course was 2.2km long and consisted of 3 and 6 laps along the picturesque West Quay to the finish line at Harbourview Lodge. A month later, IronMāori hosted IronMāori Toa, the first-ever indigenous full-distance triathlon along the same course and finishing at the soundshell on Marine Parade. This event saw 250 people complete a 3.8km swim, 180km bike ride, and a 42.2km run.

IronMāori is an event that brings Māori together from all walks of life to celebrate their love for endurance sports. It is an opportunity to challenge oneself and connect with others who share similar interests. This year’s events were a huge success and everyone who took part shared they had the time of their lives. Ngāti Kahungunu Iwi is proud to have supported founders Heather & Wayne Skipworth with their kaupapa from its humble beginnings to international status.

Waitangi Day, our national day, was celebrated with great enthusiasm at the Hawke’s Bay Sports Park in Hastings on February 6th 2022. The event was a grand success with thousands of people from all walks of life coming together on a hot sunny Hawke’s Bay day to commemorate the signing of the Treaty of Waitangi in 1840.

The day was filled with a huge variety of activities, free Mahons Thrill rides, kai, crafts and performances by artists including Bay Batucada, Te Aute College, Taikura, Tonga performers, Riqi Harawira guitar virtuosos, Waimarama kapa haka, Talitha Blake, House of Dolz, Poutasi Falealili RSE performance group and 18 Grooville RnB band from South Auckland.

The event was made possible thanks to the generous support of funders including Hastings District Council, Napier City Council, Central Hawke’s Bay District Council, Hawke’s Bay Regional Council, Ministry of Culture & Heritage, Te Taiwhenua o Heretaunga, Pub Charity and One Foundation.

Fish Hook Summit

This year the 13th annual Kahungunu Fish Hook Summit was held at the Napier War Memorial Centre on Marine Parade. The conference focused on the current state of our environment with our waterways and the recent

devastation caused by Cyclone Gabrielle. The sub headline for the event was 'Haumarū Te Taiao, Haumarū Te Tangata' meaning to care for our environment so our environment can care for us. Representatives from each of the Taiwhenua gave heart-warming updates from their rohe. Te Whanganui-A-Orotū Taiwhenua Board Chairman, Hori Reti, gave a stirring introduction, showing video footage from Tuesday 14th February where the cyclone devastation was realised throughout the rohe. Our iwi environment and natural resource experts Ngaio Tiuka and Shade Smith said that despite the tragic Cyclone, the Fish Hook Summit was an opportunity to learn and work towards improving our planning, saving costs through wider considerations and recognising the value of mātauranga Māori and looking at more natural solutions to look after our whenua and protect our waterways. We were reminded that our natural environment has been severely degraded, not just by natural disasters but poor management, polluted waterways, damaged mahinga kai, over abstraction of water and much more. The Fish Hook Summit is always a great sounding board for all Taiwhenua to come together to share experiences, aspirations, ideas plans for improving the way we care for our environment.

We acknowledge our funders & supporters, Te Arawhiti, Te Whanganui-a-Orotū Taiwhenua kaimahi and Learning Innovations Limited.

Matariki Hunga Nui

This year, saw Matariki held over a 3 month-long period to mark the Māori New Year. It brought people together to reflect on the past, celebrate the present, and look forward to the future. The rising of the star cluster Matariki signals the start of the Māori New Year, which is a time of remembrance, honouring those who have passed, and giving thanks. For the first time in Aotearoa history, Matariki, the Māori New Year was recognized as a public holiday starting in 2022.

Our funding application to the \$3million Matariki funding administered by Ministry of Culture and Heritage was declined due to insufficient funds. This did not deter our efforts to organise Matariki in our rohe and we raised \$160k+ to host the events. Te Puni Kōkiri gave \$10k to use in our six Taiwhenua. Our Taiwhenua and key supporters in Te Wairoa and Wairarapa organised over 30 Matariki events and attracted 55,000 people, one of the largest attendance for Matariki in Aotearoa. This was up from 37,000 attendance last year. See a summary of events that were held in each rohe.

• Te Wairoa

A full week of activities including a Māori games tournament, maramataka wānanga by Ātea a Rangi Trust, and a packed whānau concert with a fireworks finale at the Wairoa Community Centre. Attendance: 5000+.

We acknowledge our funders & supporters, Te Taiwhenua o Te Wairoa, Sara Bird, Esta Wainohu & Wairoa Community Centre team, HB Regional Council, Eastern & Central Community Trust, First Light, NZ Red Cross and Te Puni Kōkiri.

• Te Whanganui-a-Orotū

We held several events in Te Whanganui-a-Orotu as follows:

Hauptu Hauahi pre-dawn karakia around 7 fires on Napier beach next to the National Aquarium of New Zealand. The event took place the day before the national Matariki public holiday so whānau could hold their own hautapu ceremonies that day. Attendance: 300.

Waka maimai aroha lantern ceremony and storytelling around 7 fires on the beach. Attendance 1,000+.

Matariki Mahuika DIY bonfires event organized by Neil Gordan and a cohort of his friends. This was a huge success with hundreds of fires lit along Te Matau a Māui from Te Awanga along the coastline to Awatoto,

Smart Services

Napier, Bayview, Nuhaka, Opoutama and Mahia. Attendance: 25,000+
Ātea a Rangi Star Compass, Waitangi Park, Awatoto. The Ātea a Rangi Trust hosted Hautapu karakia ceremony, pre-dawn sightings of Matariki, stars and planets for 5 mornings and Whānau Marama Light Show, the only dark skies sensory experience in an estuary facing the Pacific Ocean in Aotearoa. Attendance: 2,000+

We acknowledge our funders & supporters, Te Taiwhenua o Te Whanganui a Orotu, Mana Ahuriri, Ātea a Rangi Trust, Eastern & Central Community Trust, HB Tourism, Napier City Council, HB Regional Council, NZ Red Cross and Te Puni Kōkiri.

• Heretaunga

The following events were held in the Heretaunga rohe:

Waka maimai aroha lantern ceremony at Flaxmere Pond was a spectacular and moving event with hundreds of lanterns launched on the water. Attendance: 1500

Hākari Matariki at Tomoana Showgrounds attracted a record crowd to the event mounted on the Matariki public holiday. It featured kai stalls, entertainment and a spectacular fireworks finale. Attendance: 10,000+

Matariki Pūrakau at Civic Square. We were unable to light fires due to no open fires policy at this time of the year however we are expecting cultural practices will be approved in future. This was well attended with many enjoying stories shared by Charles Ropitini while standing around nga pou o Heretaunga. Waka maimai aroha lantern ceremony was a special part of the early evening activities. Attendance: 500

We acknowledge our funders & supporters in Heretaunga, Eastern & Central Community Trust, Hastings District Council, HB Regional Council, NZ Red Cross and Te Puni Kōkiri.

• Wairarapa

The 4th Tirama Matariki Light Glow for two nights on Waipoua Island, QE 2 Park, Masterton attracted huge crowds. Attendance: 5,000+ .

We acknowledge our funders & supporters, Kahungunu ki Wairarapa, Melissa Ihaka & her team, Eastern & Central Community Trust, Trust House and Te Puni Kōkiri.

• Tāmaki-nui-a-Rua

Large numbers attended Matariki celebrations to enjoy maramataka wananga by Ātea a Rangi Trust, kai, entertainment, and fireworks finale. Attendance: 3500+

We acknowledge our funders & supporters, Ngāti Kahungunu ki Tāmaki nui a Rua, Eastern & Central Community Trust, Ngāti Kahungunu ki Wairarapa Tāmaki nui a Rua Settlement Trust and Te Pūni Kokiri.

• Tamatea

Te Taiwhenua o Tamatea organised a week of activities in Waipukurau to mark Matariki with the biggest turnout ever of the community for Matariki. These included a pre-dawn Hautapu Karakia on Pukekaihou hill, Ki Orahi kura tournament, emotional and beautiful waka maimai lantern ceremony, maramataka wananga by Ātea a Rangi Trust and an outdoor community concert in Russell Park with kai, wonderful local entertainment, maumahara and fireworks. Attendance: 5,000+

We acknowledge our funders & supporters, Te Taiwhenua o Tamatea, Central Hawke's Bay District Council, HB Regional Council, Eastern & Central Community Trust, Ministry for Culture and Heritage, NZ Red Cross and Te Puni Kōkiri.

Our Smart Services Commitment

To provide opportunities and benefits to our members that enhance the mana and wellbeing of Ngāti Kahungunu. "By Kahungunu, For Kahungunu, For Everyone, Forever!"



Te Rangi Huata is acknowledged by the NZ Events Industry for his service to the community



Bayden Barber and his whānau at the pōhiri of the new iwi board



Pete Kireka with his whānau at the Matariki event in Flaxmere

Kahungunu Asset Holding Company Ltd Chairman's Report



*Ko ngā tapu o te rangi
Ko ngā tapu tawhito o te rangi
Ko ngā tapu o te whenua
I takea mai ai ko te mauri
Hunu-ā-rau rehutai, Hunu-ā-rau ahuwheua
Ngā tukemata whānui o Kahungunu
Tēnei te mihi matangi rau
Tihei Kahungunu*

It is my pleasure to provide the report of the Kahungunu Asset Holding Company Limited (the Company) for the year ended 30 June 2023.

Background

The Company was established in 2005 by Ngāti Kahungunu Iwi Incorporated (NKII) to receive and manage the Treaty of Waitangi fisheries settlement on behalf of Ngāti Kahungunu. The Company received quota shares, income shares in Aotearoa Fisheries Ltd and cash.

The Company vision is to “Empower Ngāti Kahungunu Iwi Incorporated through sustainable economic and commercial success” and has a mission to “grow and maximise the assets of Ngāti Kahungunu Iwi Incorporated so the full potential and aspirations of our iwi will be met.”

To achieve the vision and mission of the Company, the following objectives have been set:

- **Kia Mataara:** To ensure the assets of the Company are invested prudently and within the Company’s purpose and rules.
- **Whakapakaritanga:** To improve the value of the Company’s capital base.
- **Whakamana:** Generate sufficient income to support the needs and aspirations of Ngāti Kahungunu Iwi Incorporated.

Board Composition FY2023

Before I start, I would like to acknowledge the passing of artist, philanthropist, composer, kapa-haka stalwart, Kahungunu leader, colleague and friend JB-Heperi Smith. We were privileged to have JB serve a term as a director on the Company up to June 2022. He served his people honourably and tirelessly during his term. Ka tangi rā ki a koe e te rangatira JB, kua riro kei tua o te ārai, kua riro kei tawhiti, whakangaro atu rā. Haere rā, e te mokopuna tuarangi a Kahungunu!

The board has changed significantly over this last financial year with four new directors appointed by the shareholder. Bayden Barber started with KAHC, coming on board as the NKII representative in July 2022. Bayden brings with him extensive management and governance experience across local and central government as well as commercial interests. Bayden also has a deep knowledge of Kahungunutanga, Kahungunu whakapapa Kahungunu mātauranga and te reo Māori.

Alex Guilleux, Ratahi Cross and Mike Devonshire were appointed by NKII to the Board in October 2022. Alex is a globally-experienced business leader and adviser. Mike is an experienced leader, mentor and governance professional, and Ratahi (Ngāti Pahauwera, Rongomaiwahine) holds a number of positions on various governance boards with horticulture as his main area of focus. You can read more about the new directors on page 31-32.

Earlier in the year, Heather Skipworth, who had been on the Board since 2016 resigned to pursue personal interests. Her commitment to the Board and the people of Kahungunu is both appreciated and acknowledged. We are fortunate to have had Barry Wilson remain on the board to provide continuity during this transition period.

Finally, this will be my last report as Chair. NKII asked me to stay on beyond my term to settle in the new Board, and this term came to an end in July 2023. It has been an honour and a privilege to serve on the Board and the people of Ngāti Kahungunu these past 10 years.

Kahungunu Asset Holding Company Ltd *Chairman's Report*

Kua roa nei au e tū hei heamana, hei tumuaki mo tēnei poari. Nōku tonu te waimarie! Kua whāngaia taku wairua ki ngā kai a te rangatira, nōku tonu te waimarie! Katoa ēnei taonga ka titia ki taku whatumanawa mō ake tonu atu.

Nature of Business

The business of the Company is to manage the fisheries settlement assets and other commercial assets of Ngāti Kahungunu Iwi Incorporated (NKII) for maximum commercial benefit.

Financial Performance

Kahungunu Asset Holding Company Limited is a company registered under the New Zealand Companies Act 1993. The financial statements have been prepared in accordance with the Financial Reporting Act 2013 and the Companies Act 1993.

The financial statements presented in this report comprise of Kahungunu Asset Holding Company Limited and its controlled entities, Takitimu Seafoods Limited Partnership (TSLP), Takitimu Transport Limited (TTL), K3 Development Limited Partnership (KDLP) and Napier Mussels Limited (NML). Together the 'Group', are presented for the year ended 30 June 2023.

The full group audit is yet to be completed, and so the results for 2023 are based on unaudited accounts.

The Group has recorded:

- a before tax profit of \$2,343,541 (2022: \$1,350,631),
- retained earnings of \$22,918,550 (2022: \$18,591,421)
- equity of \$71,187,550 (2022: \$71,978,176)

During the year the Company paid a dividend to NKII of \$400,000 (2022: \$490,000).

It is expected that the Company Board will revisit the dividend amount once the results for the financial year have been finalised.

Controlled Entities

Takitimu Seafoods

The restructure of Takitimu Seafoods in May 2022 did not deliver the savings that were expected. In the seven months ending 31 January 2023, Takitimu made a Net Loss of \$1.5m. While this was considered an improvement on previous years, the ongoing losses were unsustainable.

On 14 February, Cyclone Gabrielle hit Hawke's Bay and changed the lives of many whānau and businesses. Takitimu Seafoods has not re-opened since the cyclone, and was officially closed on 4 April 2023.

Some of the last activities on site were providing free seafood to thousands of whānau, processing and packaging 8 tonne of fish to be given away to marae to support those affected by the cyclone, and servicing the ice needs of hundreds of whānau from around Napier who were without power for days to keep their kai and medicines fresh.

Takitimu Seafoods paid all outstanding debts, made generous redundancy payments to affected staff, and provided pastoral and employment support for those that needed it. We are grateful to those kaimahi and suppliers who have stood by Takitimu Seafoods, some since its inception in April 2019.

Takitimu Seafoods continues to deal with insurers over Cyclone Gabrielle material damage and business continuity claims.

At the end of the year, the total loss for Takitimu Seafoods was \$3,466,241. This included adjusting the fixed assets to realisable value, writing off the inventory that was in the freezer during the cyclone/power cut, paying all outstanding debts and redundancy payments. This was an improvement from the previous year of a loss of \$5,558,249.

K3 Kahungunu Property

The past year has seen K3 continue to deliver on the kaupapa of its

Kahungunu Asset Holding Company Ltd

Chairman's Report

three pou Whakatū Whare, Whakatipu Rangatiratanga and Whakapakari Tangata while navigating the Cyclone Gabrielle impacts on the wider construction industry and K3 projects. The K3 business model is a unique prototype approach to providing housing results led by Māori for the benefit of the whole community.

K3's leading role in Kāinga Ora projects are seeing partnership housing results that not only create more social housing supply, but are reflecting a community and mana whenua design input never seen in the rohe before, resulting in 6 completed new homes in Maraenui with potentially more in the pipeline.

K3's results in the apprenticeship space continue to be a pillar of success with national leading results seeing the K3 Apprentice Programme grow from 65 to 130 Māori apprentice opportunities in partnership with MSD. This means more career opportunities for Rangatahi with K3 providing a pipeline of young talent to our local and Māori trades businesses.

K3 is currently working with the auditors to complete the final accounts for the last financial year.

Takitimu Transport

Takitimu Transport Limited was established to hold the Transport Services Licence and to provide transport services to Takitimu Seafoods. Takitimu Transport is reporting a profit of \$15,624. (2022: \$24,983). With the closure of Takitimu Seafoods, the KAHC Board is considering the future of Takitimu Transport Limited.

Napier Mussels

The Company holds ownership of 91% of Napier Mussels Limited, which owns a mussel farming consent off the coast of Waipatiki. There has been no activity related to the consent in the last financial year.

Napier Mussels Limited made a small loss of \$6,423.

Partnership Entities

Pania Reef Fisheries

Pania Reef Fisheries is in the final stages of winding up. All creditors have been paid, with removal of the entity from the Companies Register pending.

Kahutia

The Company holds a shareholding of 47.5% in Kahutia Limited Partnership - a forestry production and carbon trading company established in 2019. The partnership is with Tangoio South Trustees (5% shareholding) and Hineuru Holdings Ltd (47.5% shareholding).

The total profit of \$1,342,942 was made in FY2023 with \$637,901 profit attributable to KAHC Limited (2022: \$902,858 loss). The profit (as with the previous years' loss) is solely related to the market value of carbon, which has been volatile over the last 12 months.

Salco Quota Company (South Australian Lobster Quota Company)

The Company acquired 100,000 units with Salco Quota Co Limited Partnership during 2014. The units were purchased for \$100,000. An additional 135,135 units were purchased during 2016 for \$250,000. All units have been included at cost. The Limited Partner distribution received from the Salco during the year was \$14,500. Salco has been affected by the trade restrictions between China and Australia, with trading still lower than pre-COVID levels.

Shares

Aotearoa Fisheries Limited (AFL)

As at 30 June 2023 the Company has 31,496 shares which equates to a 6.3% holding in AFL. These shares include the original 7,874 shares received as part of the fisheries settlement, a bonus share issue in FY2013 of 7,874 shares, and another bonus share issue this year of 15,748 shares valued at \$3,563,547.

Kahungunu Asset Holding Company Ltd Chairman's Report

The shares are shown at their impaired value as at 30 June 2023 of \$17,736,747.

The net asset value of the company's 6.3% shareholding in AFL as disclosed in its audited Annual report at 30 September 2022 was \$31,583,160 (30/09/21: \$31,196,655).

Shares in Fiordland Lobster Company Limited (FLC)

The Company has a total of 39,670 shares in Fiordland Lobster Company Limited (FLC) at 31 March 2023 (2022: 68,862). This represents a 1.44% (31/03/22: 2.50%) holding in that company. These shares have been revalued at fair value based on market sales. The net book value of the company's 2.50% shareholding in FLC as disclosed in its Annual report at 31 March 2023 was \$5,130,085 (31/03/22: \$8,340,367).

Fisheries Quota

Quota received by the Group as part of the Fisheries Asset Settlement has been recorded at the value placed on it for settlement purposes \$26,730,371 (2022: \$26,730,371).

Property

Tautane Station

The Company owns Tautane Station, a 3,500 ha sheep and beef breeding/semi finishing station situated at Herbertville, 66 km southeast of Dannevirke. This is currently leased to the Glenheath Farming Company Limited. Tautane was valued by Baker Ag as at 30 June 2023 for \$31.8m (down from \$32.8m in the previous year).

The value decrease is the result of the overall softening of markets due to interest rates rises. Furthermore, for high-country land like Tautane, the volatility of the carbon credit market impacting on its attractiveness to potential forestry investors.

We are working with the lessors on developing a long-term strategy for Tautane Station.

Pandora Road

The Company owns two commercial properties on Pandora Road, Ahuriri. One is the site of former Takitimu Seafoods and the other property is across the road and is a leased to various entities for storage and business operations. These properties have been valued by Logan Stone as at 30 June 2023 at \$7.06m collectively.

Summary

The KAHC Group finished the year with a profit of \$2,343,541.

The decision to close Takitimu Seafoods was not taken lightly. Ultimately, the iwi could no longer sustain the ongoing losses. The mana of Tākitimu and Ngāti Kahungunu was paramount in the decision and the closing processes.

The Company's other fishing assets still remain and provide a sound return. For example, the Company is now in long-term quota lease relationships with Sealord, Moana NZ and Fiordland Lobster Company. We remain the third biggest iwi shareholding in Aotearoa Fisheries Limited.

The Board is currently reviewing the performance of K3 to determine the supports that need to be put in place to tautoko that entity.

Nei rā ngā mihi manahau ki a koutou, mō koutou i tū hei kaitautoko, hei kaihapai, hei kaiarahi mo tō iwi, mō to hapū, otirā mo tō whānau. E te iwi! Kotahi anake te ara, ko te ara whakamua. Noho ora mai rā, Ngāti Kahungunu, ahakoa kei hea koe noho ai. Kia tū pakari, kia kaha, kia māia. Kahungunu, kia ora!



Trevor Moeke
Chairman

Kahungunu Asset Holding Company Ltd

Directors

Trevor Moeke

Chair

Ngāti Kahungunu, Ngāti Porou, Ngāti Awa

Trevor has served on the board of Kahungunu Asset Holding Company since July 2013, and was appointed as chair in November 2019. Over his extensive career, Trevor has worked to promote Māori and indigenous development in governance, operation, and policy-making. His leadership experience across the public service, private and Iwi sector includes senior roles in te reo Māori revitalisation, wānanga, education, international indigenous networks, trade, Māori broadcasting, Māori business, Iwi and economic development. Raised and educated locally, he is Wellington based and is Te Poutiaki (Director) Te Ao Māori Strategy and Performance at Te Tai Ōhanga, The Treasury. Piki te kaha, Piki te Ora, Piki te Wairua!



Bayden Barber

Ngāti Kahungunu, Ngāi Tahu and Ngā Puhī

Bayden resides in Waimārama where he is deeply involved with his community and Waimarama marae. Bayden served for two terms on the Hastings District Council and was elected as the Iwi Chairman in 2022. He currently holds a number of governance roles for local, regional and national organisations including the Beef and Lamb Board NZ and Te Taura Whiri i te Reo Māori. He has solid business acumen and an informed view on local and national political and social issues, and is versed in tikanga and fluent in te reo Māori.



Ratahi Cross

Ngāti Pahauwera, Rongomaiwahine

Ratahi Cross is of Ngāti Pahauwera and Rongomaiwahine descent and is involved with a number of companies that have large investments in the Kahungunu rohe, including his family business that has about \$150 million invested in the horticultural industry from Havelock North across the plains to Fernhill. Ratahi holds a number of positions on various governance boards with horticulture as his main area of focus. Ratahi has a background in natural science specialising in Native flora and fauna and lectures in Māori history.



Mike Devonshire

Mike is an experienced leader, mentor and governance professional with a background in institutional banking, corporate finance, infrastructure, property, and business leadership. Mike is also a Chartered Member of the Institute of Directors and has detailed governance experience working with capital-intensive industries, more particularly the construction, geotechnical, property, port and wine processing sectors. Following an early career in rural property management and investment banking, Mike established his own business consultancy in 2002 and has since worked with a wide range of clients providing transactional, strategic and governance advice.



Alex Guilleux

Alex is of French descent, having grown up in Brittany, France. Alex moved to New Zealand in 2009. After many years at PwC, Alex left PwC in 2019 to become Managing Director Foods and Markets of one of the largest vertically integrated horticulture businesses in NZ. Alex is currently the Managing Partner of Corporate Value Associates (CVA) New Zealand where he provides strategic consultancy services to the horticulture and agriculture sectors.



Barry Wilson

Barry Wilson hails from Petane and Tangoio Marae in Te Whanganui-a-Ōrotu and has a wealth of knowledge and experience as an entrepreneur, business man and owner of Wilson Project Development Limited. Barry is currently a trustee/director on a number of Boards including Tangoio South Trust, Ahuriri District Health, Kahutia (GP) Limited and K3 (GP) Limited.



Ngāti Kahungunu Iwi Incorporated Summary Financial Statements

FOR THE YEAR ENDED 30TH JUNE 2023

CONSOLIDATED SUMMARY OF FINANCIAL PERFORMANCE

INCOME	Group		Parent	
	2023	2022	2023	2022
Administration and Other Operating Revenue	14,890,401	9,012,038	11,963,570	7,002,834
Hī Ika Revenue	3,470,511	3,720,094	-00	-00
Dividend Revenue	4,629,456	1,240,929	400,000	490,000
Sales	3,101,713	11,656,928	-00	-00
Surplus from Discontinued Operations	2,061,596	-00	-00	-00
TOTAL REVENUE	28,153,677	25,629,989	12,363,570	7,492,834
EXPENSES				
Administration and Operating Hauora	17,388,251	8,377,302	1,218,917	1,480,421
Mauri Ora	365,231	622,239	365,231	622,239
Governance	6,192,289	6,396,758	9,344,010	6,396,758
Finance Costs	500,675	1,297,054	500,675	779,797
Cost of Goods Sold	1,206,812	861,086	-00	-00
Impairment	-00	11,663,809	-00	-00
Impairment	270,604	1,816,087	-00	-00
TOTAL EXPENSES	25,923,862	31,034,335	11,428,833	9,279,215
Share of surplus/(deficit) - Associates & Joint Ventures	34,051	(305,131)	-00	-00
Gain on Disposal of Shares	-00	3,000,963	-00	-00
NET SURPLUS (DEFICIT) FOR THE YEAR	2,263,866	(2,708,514)	934,737	(1,786,381)

Consolidated Summary of Statements of Movements in Equity

EQUITY				
Opening Balances as at 1 July	53,688,544	56,687,808	481,858	2,558,239
Plus Revaluation FLC Shares to fair value	2,383,587	-00	-00	-00
	56,072,131	56,687,808	481,858	2,558,239
Net Surplus (Deficit) for the year	2,263,866	(2,708,514)	934,737	(1,786,381)
Write off Loan Balance	-00	(750)	-00	-00
Investment Revaluation Reserve	139,498	-00	-00	-00
Contributions from (Contributions to) Owners	(23,050)	(290,000)	(23,050)	(290,000)
TOTAL EQUITY	58,452,445	53,688,544	1,393,545	481,858

Consolidated Summary Financial Position

ASSETS				
Total Current Assets	24,012,125	10,990,242	18,330,725	5,436,894
Total Non-Current Assets	72,172,438	67,477,183	2,638,038	2,650,027
TOTAL ASSETS	96,184,563	78,467,425	20,968,763	8,086,921
LIABILITIES				
Total Current Liabilities	29,813,060	20,541,665	19,575,217	7,605,065
Total Non-Current Liabilities	7,919,059	4,237,217	-00	-00
TOTAL LIABILITIES	37,732,119	24,778,882	19,575,217	7,605,065
TOTAL EQUITY	58,452,445	53,688,544	1,393,545	481,858
TOTAL EQUITY & LIABILITIES AS AT 30 JUNE	96,184,563	78,467,425	20,968,763	8,086,921

Ngāti Kahungunu Iwi Incorporated Summary Financial Statements

FOR THE YEAR ENDED 30TH JUNE 2023

To the Members of Ngāti Kahungunu Iwi Incorporated.

This year Ngāti Kahungunu Iwi Incorporated (NKII) is unable to meet our constitutional responsibility to produce a complete annual report for the previous financial year, in time for viewing well in advance of the Annual General Meeting which takes place on 25 November 2023.

K3 Development Limited Partnership (K3DLP), and its governing body K3 GP Limited (K3GP) together with its shareholder Kahungunu Asset Holding Company (KAHC) have been unable to conclude on the future plans for K3DLP at the date of the AGM, 25 November 2023. Accordingly, the audit of consolidated financial statements of NKII Group for the year ended 30 June 2023 were unable to be completed in time for the AGM. The audited group financial statements will become available as soon as they are completed and will incorporate the future plans of K3DLP as approved by K3GP and KAHC.

We present to you a summary of the draft financial statements. This summary has not been prepared in accordance with PBE FRS 43 Summary Financial Statements. Each tribal member is entitled to obtain a copy of the full financial statements once they are available. Requests should be made to the Ngāti Kahungunu Iwi Incorporated Director of Smart Services, Ruth Wong – Email: ruth@kahungunu.iwi.nz Phone: (06) 876-2718 OR toll free (0800) 524 864.



Ngāti Kahungunu Iwi Incorporated
Chairman
Bayden Barber



Kahungunu Asset Holding Company
Chairman
Trevor Moeke



Ngāti Kahungunu Iwi
INCORPORATED

Annual Plan 2023-2024

VISION STATEMENT

“Kahungunu – ki te whaiao, ki te ao mārama”
“Achieving excellence in all areas of our lives”

MISSION STATEMENT

“Kia maumahara ki te mana āhua ake o Ngāti Kahungunu”
“Uphold the absolute uniqueness of the living breath of Kahungunu
and enhance the mana and well-being of Ngāti Kahungunu Iwi”

STRATEGIC OBJECTIVES

Ngāti Kahungunu – Culturally Strong
Ngāti Kahungunu – Healthy and Vibrant
Ngāti Kahungunu – Economically Strong
Ngāti Kahungunu – Global Citizens
Ngāti Kahungunu – Self Determined
Ngāti Kahungunu – Healthy Environment
Ngāti Kahungunu – Making our Mark

Annual Plan

Ngāti Kahungunu Iwi Incorporated (NKII) recognises the need to review its objectives and align its strategies with the needs of whānau & hapū.

In January 2023 the NKII Board reviewed the 2022-2023 Annual plan to evaluate what we have achieved and carefully assess the best way to drive the organisation forward into the future. The Board identifies the importance of remaining relevant with the current environment and ensuring that our efforts contribute to our 25year vision.

The Board Priorities are:

- Housing & Home Ownership, Employment, and Education,

The iwi strategies are:

- He Mahere Rautaki Hai Haumanu I Te Reo O Ngāti Kahungunu / Kahungunu, kia eke - The Revitalization of Te Reo o Ngāti Kahungunu;
- Kahungunu Ki Uta, Kahungunu Ki Tai - Marine and Freshwater Fisheries Strategic Plan; and
- Te Ara Toiora O Ngāti Kahungunu, the Kahungunu Wellbeing Strategy.

The Ngāti Kahungunu Iwi Incorporated Annual Plan describes the key objectives for the 2023-2024 year. These objectives are based on the iwi's seven pou that make up the 25 year vision (2001-2026) (1) Economically Strong, (2) Participating Citizens of the World, (3) Tinorangatiratanga, (4) Making our Mark, (5) Strong, Healthy, Vibrant whānau, hapū, marae, (6) Culturally Strong and (7) Protecting our Environment.

The objective of this plan is to achieve the organisations mission which is to enhance the mana and wellbeing of Ngāti Kahungunu.

**KAHUNGUNU, KIA EKE!
STRATEGIC PLAN FOR THE REVITALISATION OF
TE REO MĀORI WITHIN NGĀTI KAHUNGUNU**

- Re-establish the Runanga Mātauranga (Mātauranga Board);
- Refresh the Ngāti Kahungunu education strategy and implementation plan;
- Continue research around the Ngāti Kahungunu linguistic nuances;
- Plan, lead and manage the Ngāti Kahungunu Kura Reo & Te Reo ki Tua event to capture new speakers and increase proficiency of existing speakers; and
- Keep our iwi members informed.

NGĀTI KAHUNGUNU NATURAL RESOURCES & ENVIRONMENT KAHUNGUNU KI UTA, KAHUNGUNU KI TAI – MARINE AND FRESHWATER STRATEGIC PLAN

- Advocate for Ngāti Kahungunu rights and responsibilities to be incorporated into natural resources decision making and policy;
- Develop Ngāti Kahungunu Taiao policy;
- Support hapū to progress their Taiao aspirations including building the capacity and capabilities of our people;
- Develop quality relationships to assist our research and information needs;
- Plan, lead and manage the Fish Hook Summit to give Kahungunu whānau, hapū the opportunity to report their developments to the iwi and to engage with and learn from other kaitiaki in the rohe; and
- Keep our iwi members informed.

TE ARA TOIORA O NGĀTI KAHUNGUNU KAHUNGUNU WELLBEING STRATEGY

- Continue to meet with Te Tumu Whakahaere o Te Wero advocacy group to determine the health and wellbeing needs of our people;
- Build on the strategic relationships with key central and local government agencies to facilitate and increase effective provision that contributes to achievement of strong, healthy, vibrant whānau. These agencies include Oranga Tamariki, Corrections, Justice, Housing, Ministry of Education, Ministry of Social Development and Employment agencies;
- Fill the Director of Te Ara Toiora vacancy to direct, manage and monitor these aspirations; and
- Keep our iwi members informed.

NGĀ POU TAUNAKI - SMART SERVICES

- Organise and manage Waitangi Day, Matariki events, and the Annual General Meeting;
- Maintain the iwi registration database and update incorrect information;
- Increase the opportunity for Taiwhenua administration of the SQL Database online. Encourage local entry of data and empower our Taiwhenua;
- Build networks with organisations and seek smarter and more innovative ways to deliver benefits to members;
- Provide high level secretarial administration services and office systems and encourage paperless, eco-friendly options;
- Improve on our standard processes and implement policies;
- Regularly communicate with whānau through online website, Panui ki te iwi email, local media releases, facebook, frequent visits to the Taiwhenua and Taurahere where possible, to inform and keep whānau abreast of iwi activities and opportunities for whānau hapū and iwi development;
- Profile success, and celebrate Kahungunutanga in all forms and at all levels. Increase our media releases of Kahungunu achievements;
- Highlight the iwi's key messages and put them in all communication formats including email signatures, website, and all pertinent communications;
- Use te reo Māori in all communications; and
- Record modern Kahungunu history for future generations.

NGĀ TŪHONOHONOTANGA - POLITICAL

- Strengthen our relationship with the hapū claimant groups within the Ngāti Kahungunu rohe;
- Influence policy developed by government agencies, local and regional councils;
- Monitor the performance of these entities based on Kahungunu criteria; and
- Keep our iwi members informed.

TE WHAKATIPU ŌHANGA - ECONOMIC DEVELOPMENT

- Develop and progress the economic status of Kahungunu whānau, hapū, iwi by continuing to work with our iwi partners to progress and implement the Ngāti Kahungunu Economic Development Strategy; and
- Keep our iwi members informed and involved.

Ngāti Kahungunu Iwi Incorporated
Annual General Meeting
25 November 2023, 9am
Splash Planet, Grove Road, Hastings

AGENDA

Mihimihi
Himene
Karakia
Apologies
Maumahara
Previous Minutes
Chairman's Report
Kahungunu Asset Holding Company Report
Audited Financials
Re-appoint Auditor
Annual Plan 2023-2024
General Business
Himene
Karakia

Live Streamed: The Annual General Meeting will be live streamed on our iwi facebook page

<https://www.facebook.com/kahungunu/>







Ngāti Kahungunu Iwi
I N C O R P O R A T E D

TAIKURA HOUSE 304 FITZROY AVENUE, PO BOX 2406, HASTINGS 4153, NEW ZEALAND
PHONE 06 876 2718 • FAX 06 876 4807 • TOLL FREE 0800 KA HUNGUNU (0800 524 864)
EMAIL: ruth@kahungunu.iwi.nz
WEB: www.kahungunu.iwi.nz



AGM 25 NOVEMBER
9AM SPLASH PLANET, HASTINGS