

Hoea rā



Ngāti Kahungunu Iwi
INCORPORATED

Annual Report 2017 - 2018

Published October 2018



Table of Contents

| | Page |
|--|------|
| Purpose, Vision & Mission | 1 |
| Chairperson's Report | 2 |
| Chief Executive's Statement | 3 |
| Our Year at a Glance 2017-2018 | 5 |
| Board Members 2016-2019 | 7 |
| Staff Members 2017-2018 | 9 |
| Ngāti Kahungunu Iwi Incorporated Organisation Structure | 10 |
| Te Reo, Tikanga & Mātauranga | 11 |
| Environment & Natural Resources | 13 |
| Benefits to Members | 16 |
| Kahungunu Asset Holding Company Ltd Chairman's Report | 25 |
| Kahungunu Asset Holding Company Ltd Directors | 30 |
| Ngāti Kahungunu Iwi Incorporated Summary Financial Statements | 32 |
| Annual Plan 2018-2019 | 35 |
| AGM Agenda | 39 |



Purpose, Vision & Mission

Ngāti Kahungunu Iwi Incorporated, with the mandate to represent the people of Ngāti Kahungunu, is the governing body for all aspects of Ngāti Kahungunu Iwi development.

The purpose of Ngāti Kahungunu Iwi Incorporated is to:

- Promote or assist the education of Ngāti Kahungunu Iwi;
- Promote the custody and preservation of the beliefs, customs and language of Ngāti Kahungunu Iwi;
- Promote the social and economic welfare advancement and vocational training of Ngāti Kahungunu Iwi;
- Promote personal, whānau and community health and wellbeing and raise the living standards of Ngāti Kahungunu Iwi;
- Promote high quality communications to and for the benefit of the members of Ngāti Kahungunu Iwi.

Strategic Objectives

In September 2001 consultation with whānau throughout the rohe of Kahungunu occurred. Whānau shared their views, aspirations and desires which helped shape the development of a vision to guide Ngāti Kahungunu into the future. The vision, known as Kahungunu 2026, outlines the vision and mission statements and seven identified strategic objectives to focus on. The Ngāti Kahungunu Iwi Inc. planning framework continues to outline priorities, activities and desired outcomes that link directly to the seven strategic objectives within the Kahungunu 2026 vision.

The seven strategic objectives are:

- Ngāti Kahungunu - Culturally Strong;
- Ngāti Kahungunu - Healthy and Vibrant Whānau;
- Ngāti Kahungunu - Economically Strong;
- Ngāti Kahungunu - Informed and Participating Citizens in the World;
- Ngāti Kahungunu - Independent and Self Determined;
- Ngāti Kahungunu - Healthy, Thriving and Sustainable Environment
- Ngāti Kahungunu - Making our Mark

Vision Statement

"Kahungunu - ki te whaiao, ki te ao mārama"

Achieving excellence in all areas of our lives

Mission Statement

Kia maumahara ki te mana āhua ake o Ngāti Kahungunu

Uphold the absolute uniqueness of the living breath of Kahungunu

"To enhance the mana and well-being of Ngāti Kahungunu Iwi"

Reporting

Ngāti Kahungunu Iwi Incorporated has an obligation to provide an 'Annual Report' for its membership to account for the previous financial year 1 July 2017 – 30 June 2018. This document provides a summary report against the objectives set out in the 2017-2018 Annual Plan. It includes steps taken to increase the registration database and gives an overview of the organisation's performance, including changes in the value of its assets, profit distribution and the summary financial statements.

Chairperson's Report



Maumahara

Ka maumahara ki a rātau kua ngaro ki te pō i runga i te ngākau aroha. Aku nui, aku wehi, aku whakatamarahi kua whetūrangitia. Tīaho mai, okioki mai rā i te ope o te rua Matariki.

We have lost many people throughout the year and two that I wish to acknowledge are Koro Wetere and Heitia Hiha. Koro Wetere because he catalysed the Māori fisheries settlement which the Iwi has developed from, and Heitia because he was one of the strongest champions for hapū claims to whenua, to which I became advocate for on this board in the eighties. Both men would be proud of the outcomes to date.

Te Anga Whakamua

Having a strong iwi capital base and an evolving hapū economic base allows Ngāti Kahungunu to now turn its attention to provide strong cultural, social and financial futures for whānau. Over the past year projects such as; HUA – working with employees to provide full employment for whānau; Te Wero – working with government agencies to be more effective with whānau; Te Kawenata with Corrections – for greater participation of whānau in this space; Te Pae Oranga - working with the Police to establish community panels for whānau before they face the Courts; NUKA – an indigenous model of healthcare for Alaska that we are promoting to happen here within a Kahungunu delivery model; Kahutia – a program to recloak Papatūānuku with tress providing multiple opportunities for whānau to participate; and underpinning all these Kahungunu, Kia Eke – a language drive to put te reo Māori into homes, schools, offices and public places. In that regard we are working with Taiwhenua to deliver these projects while we provide a supporting role.

Kahungunu Pōkaiao

On behalf of the National Iwi Chairs Forum, with Government resourcing we have led the overseas opportunities in trade and enterprise. As such we have led delegations to China, Japan, Malaysia, Australia and the Middle East through a close relationship with the United Arab Emirates. We have continued to work with our Pacific cousins as well. Further to that we are working alongside the Ministry of Foreign Affairs Trade to scrutinise all Free Trade Agreements to ensure te Tiriti o Waitangi, particularly our rights and interests as highlighted in the Wai 262 intellectual property, flora and fauna claim, are infused throughout these agreements.

Te Pūkahu

This is all done from a strong engine room of a small core of multi-talented staff ready to take on the world at the drop of a kaupapa. We welcome Chrissie Hape as the new CE. Finally, I acknowledge the solid performance of the Kahungunu Asset Holding Company in managing our assets and finances with a dour resolution to increase the asset value while maintaining our cultural and social responsibilities.

I am pleased once again to present this positive annual report.

Tihei Kahungunu!

A handwritten signature in black ink, appearing to read 'Ngahiwi Tomoana'.

Ngahiwi Tomoana

Chairman

Chief Executive's Statement



Ko te amorangi ki mua, ko te hāpai-ō ki muri

The needs and aspirations of Kahungunu whānau are at the forefront of everything we do. Helping and supporting Kahungunu whānau to realise their aspirations and build their capability to lead a thriving, independent, successful life is our goal.

Ki te whaiāo, ki te ao mārama!

I would like to congratulate the Directors and staff of the tari for their achievements over the last year. These continue to be significant in our pursuit of our 25 year vision and the annual plan.

We, as a tari continue to lift and increase our influence and advocacy across the units of Te Reo me ōna Tikanga, Mātauranga, Te Taiao me ōna Rawa, Te Ara Toiora, Benefits to members, Smart Services and Special projects. Financially we registered a surplus, however, this is due to an unplanned advance from the Kahungunu Asset Holding Company before the end of the financial year. This surplus will be set aside for the coming financial year to help off-set the advance alongside targeted cost savings and raising further revenue.

Iwi registrations continue to rise; up 15% on last year with members keen to get their Kahungunu Iwi card. Ruth and her team are looking for opportunities to extend the Iwi card benefits to members over the next year.

Our team continues to improve our flagship events i.e. Annual General Meeting at Splash Planet, Waitangi Day celebrations and Matariki celebrations across our rohe. These are well supported by our partners and always well attended by our whānau. I want to especially acknowledge Te Rangī who was recognised by the Hastings District Council as the recipient of the Civic Award for Arts and Culture, well done Te Rangī!

There has been further advancement in the Kahungunu, kia eke! Ngāti Kahungunu Māori Language Revitalisation Strategy, with the successful facilitation of the third Te Reo ki Tua Language Revitalisation Symposium, Ngā Tohu Reo o Ngāti Kahungunu, Whakamana Wānanga and the 5th Kura Reo o Ngāti Kahungunu. The ultimate goal of this strategy is to have te reo Māori re-instated as a native language, transmitted from generation to generation, hence being caught as opposed to taught. Our very own Director was acknowledged at the 2017 National Māori Language Awards, taking both the Individual category and Supreme Award, of which he dedicated to Ngāti Kahungunu. Tātere's leadership and innovation ably supported by his wife Te Rina, Crystal our roving reporter and the staff of the tari, I know is the envy of other iwi across Aotearoa.

Kahungunu ki Uta, Kahungunu ki Tai Marine and Freshwater Strategy leads the mahi for Te Taiao me ōna Rawa. I would like to mention Ngaio's efforts and determination to influence the Tūtaekurī, Ahuriri Estuary, Ngaruroro, Karamū [TANK] plan. This will be available for public consultation and submission in the coming months. Awesome mahi Ngaio! He also continues to work alongside our Taiwhenua, marae/hapū and Post Settlement entities to advocate for improved water quality, land use and natural resources.

We have also embarked on mahi underpinned by existing or strengthened relationships over the last 12 months. Tawehi Munro Strategic Advisor Māori for the Ministry of Education joined us as a part-time secondee under our partnership agreement Kahungunu Kawa Whanaungatanga to review and augment Te Tōpuni Tauwhāinga and the implementation plan.

Chief Executive's Statement

I thank Roy Sye, Director for Education (Hawke's Bay Tairāwhiti) for his support and leadership to enable this secondment.

Errol Kalmancsi joined us from the Department of Corrections as the first tranche under the intended programme of action under our Kawenata. Errol facilitates employment options for whānau released from prison. He has discovered many employers willing and ready to give these whānau a second chance. The staff love to hear his successes at our weekly Tari meetings. This work will be augmented over the coming 12 months to include interventions that will support the successful reintegration of those whānau released from prison and diversion programmes and interventions to curb the incarceration of our whānau and support them to connect to their whānau whānui, marae/hapū, successfully participate and contribute to their whānau and community.

Under the guidance of Te Tumu Whakahaere o Te Wero (Kahungunu Advisory Group) we have continued to develop our partnerships with government agencies to support better outcomes for whānau and where possible repatriate our mokopuna and whānau to their marae/hapū. Te Wero project group in partnership with Oranga Tamariki are co-designing an external facilitation process for Family Group Conferences and Hui-a-whānau. This is due to be completed by the end of the calendar year with implementation to begin in the new year. Also a demonstration pilot programme to support 10 pakeke who have guardianship of their mokopuna was implemented this year. The findings of the programme will provide evidence to influence the required change in support of the success of these placements.

Te Pae Oranga (Iwi Community Panels) was launched in August. This is in partnership between New Zealand Police and is being delivered by Te Taiwhenua o Heretaunga. This programme diverts offenders of low level crime away from the judicial system to a Community panel where they are supported to develop and complete a plan to resolve their reasons for offending.

Te Kāhui Ōhanga continues to advocate and lead initiatives that encourage and promote economic prosperity and growth for our whānau under the Matariki Regional Economic Development Strategy for Hawke's Bay. 3 part-time portfolio managers were engaged to lead activities on behalf of the collective focused employment, supporting business development and growing wellbeing and resiliency of rangatahi.

In closing I would like to mihi to all the staff of the Iwi office and their whānau. I would like to acknowledge the incredible mahi they do and the tireless hours they work to ensure we deliver what we say we will to our whānau whānui o Ngāti Kahungunu Iwi.

Tūtira mai ngā iwi, Tātau tātau e!!!



Chrissie Hape
Chief Executive

Our Year at A Glance 2017-2018

- 18,000 people attended eight iwi run Matariki events held in Jul 2017 & Jun 2018
- 4,500 iwi members attended the 12th AGM Pā Sports day held on Saturday 25 Nov 2017
- 12,000 people attended Kahungunu Waitangi Day and enjoyed the free super Mahons rides. Members received a kai coupon
- 5,000 people attended Kahungunu Kapa Haka Regionals hosted in Te Wairoa, April 2018
- 120 people attended the 8th Kahungunu Fish Hook Summit held at the Napier Sailing Club in May 2018
- 75 taura in their 3rd to final year of degree or doing post graduate studies received a scholarship grant in June 2018
- 129 iwi members and groups received sponsorship funding
- 12,000 iwi members received the new iwi Benefits to Members ID Card initiated last year to enable iwi members entitlement to discounts and other benefits including scholarship, sponsorship and access to other support the organisation gives its members
- 874 iwi members received a food voucher at Waitangi Day and the Matariki events held outside the Hastings and Napier districts
- 3,700 people attended the 12th AGM Pā Sports Day in November 2017
- 1,000 iwi members were given Māori Bread, Butter, Jam and a free BBQ lunch
- 3,000 iwi members received a pottle of Rush Munro's Ice Cream
- 3968 new members registered with the iwi
- 83 iwi members passed away during this time and their families received pataka fish to support their whānau
- More than 200 iwi members have signed up to use Simplicity Funeral Services at a discounted rate. 80 whānau members have used this service which has brought a collective savings of \$138,000 for these whānau.
- 219 notices were sent out through the panui ki te iwi email network to promote or share information about general hui, kaupapa and events supporting Kahungunu wellbeing
- 9,200 registered whānau member households were sent a 2017-2018 Matariki calendar in July 2017
- 164 Kahungunu whānau members attended Koroneihana celebrations August 2017
- 600 whānau members attended the 2017 Te Reo Symposium and bi-annual Te Reo Awards in August 2017
- 250 Kahungunu whānau members attended Te Kura Reo o Ngāti Kahungunu held at EIT Hawke's Bay in October 2017.



Waitangi Day

Our Year at A Glance 2017-2018



Board Members 2016-2019



Haami Hilton

Kaumātua Representative

Ko Kahurānaki te maunga
Ko Ngaruroro te awa
Ko Poukawa te waiū
Ko Kahurānaki te marae
Ko Te Rangikoianake te hapū
Ko Te Whatuiāpiti te tangata
Ko Te Hāpuku te rangatira
Ko Tākitimu te waka
Ko Ngāti Kahungunu te iwi
Ko Haami Te Kuru Hilton tōku ingoa

Te Whanganui-a-Orotū Taiwhenua Representative

Ko Maungaharuru te maunga
Ko Tūtira te waiū
Ko Te Ngaru te awa
Ko Tangitū te moana
Ko Tāngoio te marae
Ko Hori Reti tōku ingoa



Hori Reti



Michael Anthony Paku

Heretaunga Taiwhenua Representative

Ko Kahurānaki te maunga
Ko Ngaruroro te awa
Ko Ruahāpia te marae
Ko Ngāti Hawea te hapū
Ko Tākitimu te waka
Ko Ngāti Kahungunu te iwi
Ko Mike Paku tōku ingoa

Te Wairoa Taiwhenua Representative

Ko Te Rākatō, Ko Tuahuru ngā marae
Ko Takitimu te waka
Ko Ngāti Kahungunu, Ko Rongomaiwahine ngā iwi
Ko Alice Wairau tōku ingoa



Alice Wairau



John Barry
Heperi-Smith

Tamatea Taiwhenua Representative

Ko Te Rangi-tapu-ā-whata te maunga
Ko Whatumā te waiū
Ko Takitimu te waka
Ko Te Rongo-a-Tahu te marae
Ko Ngāti Kahungunu te iwi
Ko Ngāi Te Kikiri-o-te-Rangi, ko Ngāi Tahu
Mākakanui, ko Ngāi Toroiwaho ngā hapū
Ko John Barry (JB) Heperi-Smith tōku ingoa

Board Members 2016-2019



Hayden Hape

Kahungunu ki Tāmaki-nui-a-Rua Taiwhenua Representative

Ko Kaitoki te marae
Ko Ngāti Pakapaka te hapū
Ko Tākitimu te waka
Ko Ruahine te maunga
Ko Manawatū te awa
Ko Ngāti Kahungunu te iwi
Ko Hayden Hape tōku ingoa



Marama Tuuta

Kahungunu ki Wairarapa Representative

Ko Pāpāwai te marae
Ko Ngāti Moe te hapū
Ko Takitimu te waka
Ko Ngāti Kahungunu te iwi
Ko Marama Tuuta tōku ingoa



Owen Purcell

Taura here Representative

Ko Kahurānaki, ko Te Mata o Rongokako ngā maunga
Ko Ngaruroro te awa
Ko Ruahāpia te marae
Ko Ngāti Hori, ko Ngāti Hawea ngā hapū
Ko Tākitimu te waka
Ko Ngāti Kahungunu te iwi
Nō Kirikiriroa ahau
Ko Owen Purcell tōku ingoa



Noelene Smiler

Taura here Representative

Ko Whakapunake tōku maunga tipua
Ko Hangaroa, ko Kaitaraha, ko Ruakituri ōku awa
Ko Te Reinga tōku marae
Ko Tuarenga tōku whareni
Ko Hinekōrako tōku wharekai.
Ko Ngāti Kōhatu, ko Ngāti Ruapani, ko Ngāti Hinehika ōku hapū
Ko Ngāti Kahungunu tōku iwi
Ko Tākitimu tōku waka
Ko Noelene Mauritania Smiler tōku ingoa

Staff Members 2017-2018

In May 2017 after the departure of the former Chief Executive, the Board appointed Chrissie Hape as the General Manager to see the office through a transitional stage of growth and empowerment. Earlier this year Chrissie was appointed to the position of Chief Executive after a thorough examination of benchmarks set by the Board which were achieved throughout the previous year.

The following management structure has been in place for the past 8 years and has allowed the tari to implement activities that align to the iwi mission and the objectives of the iwi's 25 year vision. The structure includes the Chief Executive and Unit Directorates for the following areas, **'Smart Services'** which includes event management, communications, registrations, benefits to members, finances, executive assistance and general administration, **'Te Reo, Tikanga and Mātauranga'**, **'Environment and Natural Resources'**, and **'Te Ara Toiora'**. Presently Chrissie Hape leads the Te Ara Toiora Unit.

Although the core team is small, we must acknowledge the support we get from our secondees outside contractors, interns and part-time workers who have joined us throughout the year. Without their help and assistance our tari would not be able to achieve the work we do.

The iwi organisation will continue to build partnerships with regional and national government agencies and increase opportunities for secondments as we work together to achieve outcomes for whānau development.



Chrissie Hape
Chief Executive



Ngaio Tiuka
Director of
Environment and
Natural Resources



**Jeremy Tātere
MacLeod**
Director of Te Reo,
Tikanga and
Mātauranga



Ruth Wong
Director of Smart
Services and
Communications
Advisor



Kerrin Fair
Database
Administrator



Michelle Ferris
Senior
Administrator
& Receptionist



Hine Hape
Finance Officer



Kate Karaka
Executive
Assistant



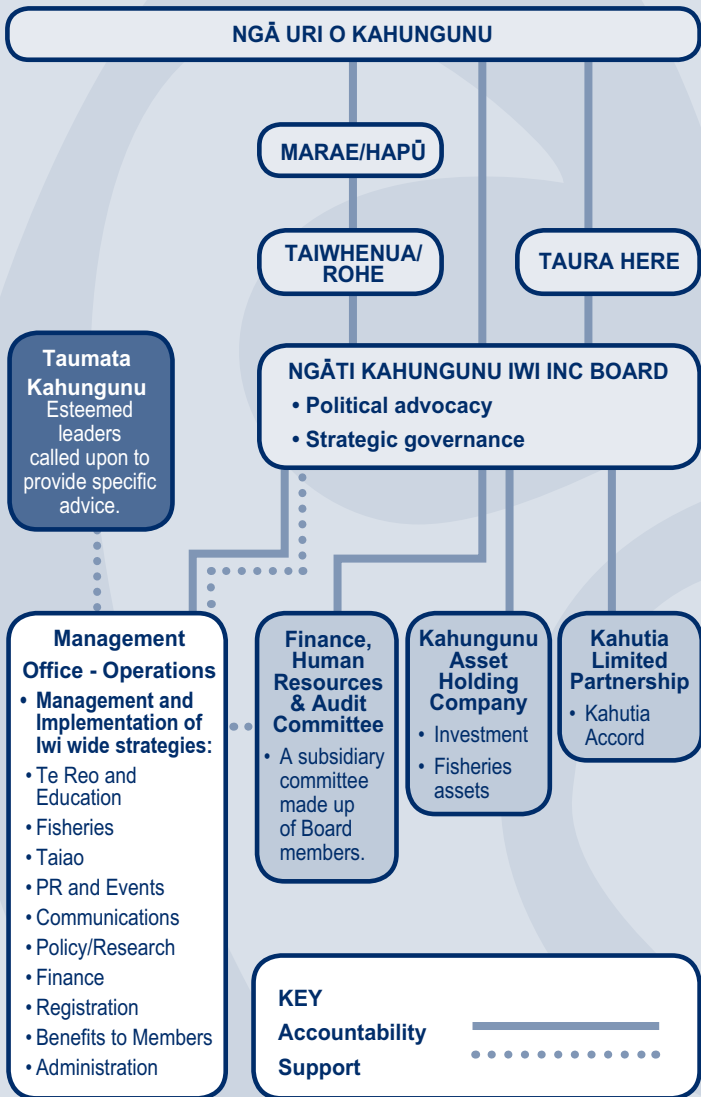
Te Rangi Huata
Events &
Promotions
Manager



Danielle Keil
Special Projects
& Events Support

Ngāti Kahungunu Iwi Incorporated Organisation Structure

Ngāti Kahungunu Iwi Incorporated is governed by ngā uri o Kahungunu through its constitutional organisational structure. This diagram depicts the structure of the iwi from marae/hapū to governance and through to management and workstream level.



Te Reo, Tikanga & Mātauranga

Ngāti Kahungunu, e tangi nei ki ngā mate o te tau huri noa i tō tātau rohe me ōna tini kāinga maha. E mihi ana ki a tātau ngā urupā o rātau mā e takatū tonu nei i te mata o te whenua, e whakatutuki nei i ngā wawata o kui mā, o koro mā. Tēnā koutou, otirā, kia ora tātau katoa.

He tau pai te tau, he tau nui te tau, he tau eke te tau! E rangona ana ngā whakapaunga werawera a Ngāti Kahungunu ki tōna reo huri noa i te motu, waihoki i te ao. Me takoto i konei he mihi ki te ope taua o te iwi e whakapau nei i ō rātau kaha rā atu, rā mai mō te oranga anōtanga o te reo te take. Me i kore ake koutou, kua kore nei he take o tā tātau rautaki whakarauora reo, ka mihi tonu rā, ka mihi tonu rā.

I te tau kua mahue ake nei i whakanuitia te ekenga o Te Kura Reo o Ngāti Kahungunu ki tōna tau tuarima. Kua tae tēnei kaupapa ki te tai whakarunga me te tai whakararo o te rohe, ia te tau ka nui kē atu, ka nui kē atu. Ko te waimarie nui o ēnei kura ko te āwhina mai a waho, arā, ngā mātanga reo e hau nei ō rātau rongu, e hoki tonu mai nei tau atu, tau atu i runga i te aroha nui ki a Kahungunu e kaha nei ki te whakaora anō i tōna reo. E kore e mutu te mihi ki tēnei hunga e rite tonu nei te hoki mai, te tautoko mai, te takoha mai.

I tū anō te kurutetenga whakarauora reo e kiia nei ko Te Reo ki Tua. Kua tipu rawa atu tēnei kaupapa mai anō i tōna whakatūnga e toru tau nei ki muri. Ki tō mātau mōhio, kāore he hui whakarauora reo ko te whakarauora reo te aronga matua nui ake i tēnei huri noa i te motu. Me whakahīhī tātau ka tika. Koinei te hui nui katoa mō te reo o te tau, ā, neke atu i te 700 ngā tāngata ka tae mai ki tēnei hui. Hāunga te nui o te tangata, ko te momo tonu o ngā kaikōrero, kounga rawa atu nei. Ko te kaupapa matua i tērā tau, Whakaaweawetia te hunga whakaaweawe, arā, ko te whakaaweawe i ngā toa reo Māori o te rohe.

I tū anō Ngā Tohu Reo Māori o Ngāti Kahungunu, he pō tērā e whakanui ai a Ngāti Kahungunu i ōna toa reo Māori i roto i ngā tau. Koinei te pō e āta noho ai a Kahungunu ki te mihi i te hunga whawhai mō tōna reo. He pō ātaahua, ā, he rite anō te muia o tēnei hui pēnei i ō te kurutetenga.

I eke anō te wānanga 'Whakamana i Te Pae o Huaki-pōuri' ki tōna tau tuarima. E haere tonu nei tēnei wānanga, he whakangungu i te hunga karanga me te whaikōrero i runga i ō tātau marae. He mea tiki atu i waho ngā puna mātauranga, ā, kāre a Kahungunu i te matakū ki te tiki atu i te mātauranga i te hunga kai a rātau ngā kōrero, ahakoa nō hea. Ko te mea nui e mau ana ngā kōrero, koi ngaro.

I whakanuitia a Jeremy MacLeod i tērā tau e Te Taura Whiri i Te Reo Māori. I riro i a ia te tohu Takitahi 2017, me te tohu Huia Te Reo 2017, te tohu tiketike katoa o te pō. I mihi e ia ōna mātua mō rāua i whakatangata i a ia. I mihi hoki e ia a Ngāti Kahungunu, ka mea ia: "Mā Ngāti Kahungunu ēnei tohu, ko rātau taku tuara".

E kore e mutu te whakamīharo ki te tahuri mai a Ngāti Kahungunu ki tōna reo. Kua aua atu e tāria ana te pēnei, ā, me kaha tonu tātau kia hoki mai anō ai te reo i tata ngaro, koi ngaro anō, mā tātau e kore rawa atu ai e pērā.

Kahungunu, kia eke! Tō reo kia ora!

Jeremy Tātere MacLeod

Pouaratāki – Director, Te Reo, Tikanga me Mātauranga

Te Reo, Tikanga & Mātauranga

Pictures taken at the Te Reo Symposium 2018



Environment & Natural Resources

The last 12 months has again been busy in the Taiao space. Government agencies can struggle with the necessary paradigm shifts in terms of actual sustainable resource management and the expectations of tangata whenua for meaningful change. Some agencies attempt to become more responsive to iwi while others seem stuck in the sediment. Ngāti Kahungunu organisations including Post Settlement Governance Entities (PSGE's) are becoming increasingly active in the Taiao space.

There has been good progress made on most of our key goals:

- Advocate for Ngāti Kahungunu objectives and values to be incorporated into natural resources decision making and policy developed by local, regional and central government.
- Complete a review of the Kahungunu Ki Uta Kahungunu Ki Tai Strategic Plan.
- Support hapū to progress hapū management plans to enhance their role as Kaitiaki of natural resources.
- Develop quality relationships with organisations to assist us to achieve our natural resource objectives which help to build the capacity and capabilities of our people.

Over a year ago, the iwi board formally opposed all oil and gas prospecting, exploration and extraction from the coastal waters of Ngāti Kahungunu. This year the government stopped offering blocks for petroleum exploration, stating, "that our future is not in fossil fuels". However, due to existing permits, oil extraction may still occur and pose a threat to mahinga kai.

The iwi 25-year vision includes an economy where farming and horticulture is free from genetic engineering or genetically modified organisms (GE/GMO). The iwi supported Hastings District Councils (HDC) Plan to prohibit GMOs being used outside the laboratory. The iwi provided evidence and worked alongside HDC and others to squash appeals by Federated Farmers in the Environment Court. Hastings became the first official GMO free area in the Country securing major economic opportunities for local food producers.

In the aftermath of the Havelock North drinking water contamination outbreak, the Hawke's Bay Drinking Water Joint Working Group was established. Ngāti Kahungunu Iwi incorporated along with the DHB and Councils are part of this group. Ensuring that safe and reliable drinking water is provided for our communities is why Ngāti Kahungunu is involved and active in this space.

To help understand our environment and the pressures, where possible the iwi has agreed to support or partner with research institutions to apply for research funding on potential projects. The Taiao Unit will work with Taiwhenua and marae if successful. Over the next 5 year's extensive research will be carried out on our aquifer led by Geological & Nuclear Sciences and other agencies. The Iwi has also joined the Hawke's Bay Marine and Coastal group established by Hawke's Bay Regional Council and includes a range of interest groups whom meet regularly to progress our collective Marine and Coastal research aspirations. The group is inviting interested tangata kaitiaki to participate.

Ngāti Kahungunu Iwi Incorporated works closely with the Kahungunu Asset Holding Company (KAHC) and submits on the governments fisheries management decisions to ensure they are sustainable and recognise the cultural interests of Ngāti Kahungunu. This includes requesting a ban

Environment & Natural Resources

on commercial fishing of eels in Ngāti Kahungunu. Kahungunu Asset Holding Company has not commercially fished eels for years.

The Taiao Unit has been able to assist hapū with restoring and enhancing wetlands adjacent to the Waitangi Estuary. We also have supported hapū in challenging resource consents that pose significant risk to Ngāti Kahungunu mahinga kai. This includes the Panpac resource consent to discharge 15M litres of waste a day into the moana from their processing plant in Whirinaki.

Input into the sustainable management of our waterways has been a significant undertaking for the Taiao Unit. The importance of this work is immense given the mauri of our waterways and the state of our mahinga kai however, it also comes with seemingly little return. These efforts are on-going and only time will tell if the Tukituki, Tūtaekurī, Ngaruroro, Ahuriri, Karamū and Heretaunga will be better off in the future. The Mohaka and Wairoa awa will soon have their management plans reviewed.

Appropriately identifying and recognising taonga, wāhi tapu, significant sites, outstanding landscapes, outstanding water bodies or whatever term takes your fancy, increasingly emerges as a necessary tool at times that excludes 'trade-offs', to provide an extra layer of protection over what mana whenua deem necessary to protect. The Taiao Unit has been



Environment & Natural Resources

active in ensuring that these tools are better framed and meaningful to serve their purpose. It is a work in progress to educate Councils but, it also requires mana whenua to document what is to be protected, how and why.

For improved natural resource management, the Kahungunu Taiao Unit encourages local and central government agencies to engage directly with kaitiaki and mana whenua. The Iwi also promotes using our Taiwhenua to assist with this engagement as well as working with them and our PSGE's. The efforts of many kaitiaki should also be acknowledged it's with great restraint I resist listing individuals as I'd run out of room and I'd like to avoid offence. Ngā mihi ki a koutou i tō koutou nei kaha ki tēnei kaupapa.

Finally, it is great news that Ngāti Kahungunu Iwi Incorporated has Tracee Te Huia on Board as the Programme Director of Kahutia Accord, to lead this project which aims to environmentally and sustainably blanket the rohe with a mixture of native and exotic trees, that will improve many of our Taiao objectives while also being commercially viable.

Ngaio Tiuka

Pouarataki – Director, Te Taiao me ōna Rawa



Benefits to Members

SMART SERVICES

The Smart Services team is a dynamic group of individuals who work well together to ensure that all iwi activities are planned, lead, organised, communicated and managed in an efficient way. This year we have focused on using our online tools to improve the way we communicate and inform our members. We are now fully cloud based and have new tools that can be used from anywhere in the world. We have migrated from a Microsoft Access Registration to a cloud based SQL (structured query language) database which allows us to produce more comprehensive reports to assist our people.

COMMUNICATIONS

Ngāti Kahungunu Iwi Incorporated takes pride in the way we communicate with our registered iwi membership, our potential members, Māori providers and the public. The whole purpose of communicating well as an organisation is to ensure everyone knows who we are, why we exist and what we do. We are always improving the way we communicate. Over the past 12 months we have produced a 12 month calendar of events, published our monthly 8-12 page Tihei Kahungunu newspaper, generated over 200 pānui ki te iwi through our email network and produced a number of poster adverts through our website, facebook and email network. The fastest way to know what is going on at the iwi office is to become a recipient of the pānui ki te iwi via email. Please call our office to inquire. Phone or email Ruth Wong 06 8762-718 or toll free 0800-524-864 or email ruth@kahungunu.iwi.nz

REGISTRATIONS

We are pleased with the number of new registrations received over the past 12 months which has increased our database by nearly 4,000 members bringing our total to 30,045. The majority of the new registrations were entered in November 2017 when the Benefit to Member card was launched. Each year we receive more registrations when scholarships and sponsorships open. I'd like to acknowledge the work lead by Kerrin Fair and his team of young helpers.

BENEFITS TO MEMBERS

12 months ago we introduced the Iwi Benefit to Member card. The purpose of the card is to give registered members access to free or discounted opportunities such as sponsorships, scholarships, food vouchers and free entry to events. 12,000 iwi members have received a Benefit to Member card. Earlier this year we signed a Memorandum of Understanding with 'Simplicity Funeral Services'. They offer iwi members a Kahungunu package which involves a free sign up, no deposit, discount on funeral services. To date 80 Kahungunu families have used this opportunity and have collectively made a savings of around \$138,000. Ngāti Kahungunu Iwi Incorporated is the first mandated iwi in Aotearoa to partner with a funeral home that benefits its members with this kind of package regardless of where our whānau live in our country.

Pages 17-24 depict a summary of events that we have held or supported over the year. Ngāti Kahungunu Iwi Incorporated is pleased to support our membership with opportunities that enhance the mana and wellbeing of our whānau, hapū, iwi.

Tihei Kahungunu

Ruth Wong

Pouarataki – Director, Smart Services & Communications Advisor

Simplicity Funeral Directors
from left: Mathew Meacheam,
Peter Paul and Noel Morris.



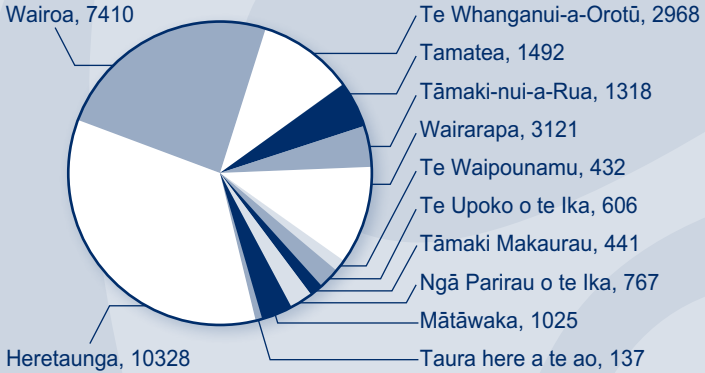
Benefits to Members

New Members Summary by Area Report:

Members Entered between 01/07/2017 - 30/06/2018

| | |
|-------------------------|-------------|
| Mātāwaka | 613 |
| Heretaunga | 1320 |
| Tāmaki-nui-a-Rua | 222 |
| Tamatea | 314 |
| Wairarapa | 247 |
| Wairoa | 866 |
| Te Whanganui-a-Orotū | 332 |
| Ngā Parirau o te Ika | 11 |
| Te Raki/Tāmaki Makaurau | 3 |
| Te Upoko o te Ika | 30 |
| Te Waipounamu | 10 |
| Grand Total | 3968 |

Iwi Members by Area



EVENTS

Ngāti Kahungunu Iwi Incorporated strives to produce and sponsor events that strengthen hauoratanga, whanaungatanga and Kahungunutanga.

Waiata Māori Music Awards September 2017, Clubs Hastings

This national event seeks to develop, encourage and honour the achievements of outstanding traditional and contemporary music composition and performance annually.

The full house sign has gone up since the event moved to the 500+ capacity Clubs Hastings venue.

Ngāti Kahungunu Iwi is proud to sponsor this superb platform for Māori music excellence in our rohe.

Kahungunu AGM Pā Sports Day 2017, Splash Planet, Hastings

In November we hosted another sold-out sports day with over 1,500 players from our marae competing in netball, 3 on 3 basketball, volleyball, kiwi sports, Kī-o-rahi, touch rugby and euchre.

Our AGM meeting held outdoors ran for an hour and was live streamed. We provided "Kai Hau Kai" for our card carrying members. This included a delicious outdoor steak and garden salad lunch for 1,000 people and distribution of 3,000 pottles of Rush Munro ice cream and 1,000 family packs comprising a rewana bread, a bottle of jam and a pound of butter for iwi members.

Families joined us from Hamilton, Wellington, Masterton, Dannevirke and Wairoa.

Benefits to Members

Iron Māori November and December 2017, Ahuriri, Napier

Thousands of whānau came to support their loved ones as they swam and ran around Ahuriri lagoon and cycled through the surrounding countryside. It was heartening to see hundreds of youngsters in their special events and thousands of their parents in the quarter and half marathon cross the finish line.

Kaumātua from near and far joined in the party as they danced and sang their way across the finish line in their own super event.

Ngāti Kahungunu Iwi is always delighted to sponsor this wonderful homegrown international lifestyle changing event.

Thank you to the founders of IronMāori Heather & Wayne Skipworth, Missy & George Mackey, Lee Grace and his wife Kiri Bird.

Waitangi Day 2018, Hawke's Bay Sports Park, Hastings

Thousands turned out to enjoy our free National Day celebrations. Headline acts included Che Fu, Peter T and Ty. The highlight for youngsters were free Mahons Thrill rides all day. Healthy foods and free kiddies rides were on offer and Hawke's Bay DHB provided health services and information. Teams competed in netball, 3 on 3 basketball, Kī-o-rahi and a touch tournament. Our Zero Waste programme run by Closed Loop diverted 80% of the event's waste from the landfill. Thank you to One Pure water for providing free bottled water and Crasborne Group for the free delicious pears we gave away to the public.

Matariki Whānau Festival June 2017, Kahungunu wide

Our annual Matariki celebrations has continued to be a popular family attraction for thousands of people to town and country centres in Wairoa, Napier, Hastings, Te Aute College, Takapau, Dannevirke, Masterton and Wainuiomata to welcome the Māori new year with fun, feasting and festivity.

The highlights of this year's events included Kai Hau Kai – an initiative to provide kai coupons for iwi members to redeem at food stalls at all Matariki events. The outdoor screen and the bigger than normal fireworks displays were positive additions. The highlight in Masterton were the water remembrance water lanterns on Henley Lake.

This year for the first time we took our Matariki Whānau Festival out of our rohe to Wainuiomata. With the blessings of Te Ati Awa the event proved hugely popular with a massive turnout of Kahungunu members and the public. Many locals shared that this was the best event ever in Wainuiomata.

We are grateful to our local supporters Wainuiomata League Club, our board member Noeleen Smiler and Lower Hutt Council staff. We appreciate our funders Te Puni Kōkiri, Trust House, First Sovereign Foundation, First Light Foundation, Lower Hutt Council, Ata Awa Toa FM and Creative Communities.

Our Events Commitment

"To provide benefits to our members one by one, family by family in their thousands."

By Kahungunu, For Kahungunu, For Everyone, Forever!

Te Rangi Huata

Events and Promotions Manager

Benefits to Members

GENERAL SPONSORSHIPS

Each year we are receiving more and more applications from eligible iwi members and groups of Kahungunu whānau members who are representing Kahungunu in a national or international sporting or culture event. We are overwhelmed at the talent of our iwi members. This year we supported and sponsored over 100 individuals and groups. The following list highlights those who received sponsorship from us over the 2017-2018 financial year.

| Recipient Name | Event of Activity | Value |
|--|--|------------|
| Kayla Fromont Beach | National U18 Womens Hockey Tournament | \$250.00 |
| Harlem-Cruz Ihaia | National Miss Universe 2017 | \$1,184.25 |
| Te Kitha Tutaki-Irving | International Indoor Netball Junior World Series | \$500.00 |
| Raleigh Knapp | National U18 Womens Hockey Tournament | \$250.00 |
| Xavier Mason | National U17 Basketball Championships | \$250.00 |
| Chelsea Rangī Elia-Peters | International Indoor Netball Junior World Series | \$500.00 |
| Kainoa Lepou | National U17 FIBA Asia Championships | \$500.00 |
| Jess MacLeod | Battle For Life | \$400.00 |
| Te Kura Kaupapa Māori O Ngāti Kahungunu Ki Heretaunga | International Cultural Exchange | \$1,000.00 |
| Ashley Puriri | International WIPCE Conference | \$500.00 |
| Xavier Clarke-Lloyd | National U15 Basketball Championships | \$250.00 |
| Kiana Jessup | National U17 Basketball Championships | \$500.00 |
| Phenix Wairau-Pomana | National U17 Basketball Championships | \$250.00 |
| Laticia Transom | International Commonwealth Games - NZ Swim Team | \$500.00 |
| Donte Russo | National U17 Basketball Championships | \$250.00 |
| Anna Haronga | National U15 Basketball Championships | \$250.00 |
| Kaitlin Cotter | National U18 Womens Hockey Tournament | \$250.00 |
| Joshua Mackie | International AFL Cup | \$500.00 |
| Geneva Harrison | National U15 Basketball Championships | \$250.00 |
| Legacy Harrison | National U15 Basketball Championships | \$250.00 |
| Peterhead School | Ngāti Kahungunu Primary Schools Kapa Haka | \$1,000.00 |
| Stephen Rye-Dunn | Cultural Leadership Tour (Suicide Prevention) | \$500.00 |
| Candice Timms | International Trans Tasman Touch Series | \$500.00 |
| Kaitlin Cotter | National U18 Womens Hockey Tournament | \$250.00 |
| Jahna Watson | International Youth Muay Thai Championships | \$500.00 |
| Rosaline Dennis | International Great Wall of China Marathon | \$500.00 |
| Katrina Whaanga | International Ironman Championships | \$500.00 |
| Dream Taumata | National Special Olympics Summer Games | \$300.00 |
| Promise Taumata | National Special Olympics Summer Games | \$300.00 |
| Rivylene Taumata | National Special Olympics Summer Games | \$300.00 |
| Chyna Maree Keen | International U15 Softball Tournament | \$500.00 |
| Taimania Pupuke | World Hip Hop Dance Championships | \$500.00 |
| Hannah Cotter | National U15 Womens Hockey Tournament | \$250.00 |
| Michael Nuku | World Rafting Championships | \$500.00 |
| Te Waia Nuku | World Rafting Championships | \$500.00 |
| Te Kura Kaupapa Māori o Te Wananga Whare Tapere o Takitimu | Kapa Haka Nationals | \$500.00 |

Benefits to Members

| Recipient Name | Event of Activity | Value |
|------------------------------------|---|------------|
| Maiya Smith | World Hip-Hop Champs | \$500.00 |
| Violette Perry | International Children's Athletic Games | \$500.00 |
| Jayda Brown | International Children's Athletic Games | \$500.00 |
| Pa Haka Committee | Pa Haka Wairoa Event | \$1,000.00 |
| Mya Rasmussen | International Commonwealth Games - NZ Swim Team | \$500.00 |
| Ahuriri U17 Boys Basketball | National Māori Basketball Tournament - Team | \$500.00 |
| Shane Nikora | National Māori Golf Tournament Event | \$1,000.00 |
| Heretaunga Masters Basketball | National Māori Basketball Team | \$500.00 |
| William Makea | International Mens Handball Championships | \$500.00 |
| Heretaunga U13 Boys Basketball | National Māori Basketball Team | \$500.00 |
| Heretaunga U9 Girls Basketball | National Māori Basketball Team | \$500.00 |
| Heretaunga Social Mixed Basketball | National Māori Basketball Team | \$500.00 |
| Heretaunga U15 Boys Basketball | National Māori Basketball Team | \$500.00 |
| Heretaunga U11 Girls Basketball | National Māori Basketball Team | \$500.00 |
| Heretaunga Open Mens Basketball | National Māori Basketball Team | \$500.00 |
| Iverson Harris | International Basketball Pacific Koru Tour | \$500.00 |
| Nathanael Taylor | National Special Olympics Summer Games | \$500.00 |
| Heretaunga U9 Boys Basketball | National Māori Basketball Team | \$500.00 |
| Heretaunga U11 Boys Basketball | National Māori Basketball Team | \$500.00 |
| Heretaunga U15 Girls Basketball | National Māori Basketball Team | \$500.00 |
| Ahuriri U13 Tane Basketball | National Māori Basketball Team | \$500.00 |
| Finlay Te Rito Johnson | National World Youth Basketball Tournament | \$300.00 |
| Lewis Te Rito Johnson | National World Youth Basketball Tournament | \$300.00 |
| Ahuriri Basketball Tane | National Māori Basketball Team | \$500.00 |
| Ahuriri U13 Girls Basketball | National Māori Basketball Team | \$500.00 |
| Sport Hawke's Bay | Wairoa Sports Awards | \$500.00 |
| Briah McGrail Timms | World Gauntlet Crossfit Tournamet | \$500.00 |
| Reiley Bartlett | World Gauntlet Crossfit Tournamet | \$500.00 |
| Horowai Puketapu | National Softball Tournament | \$250.00 |
| Kingston Zwierschowski | International Taekwondo Champtionships | \$500.00 |
| Braxton Zwierschowski | International Taekwondo Champtionships | \$500.00 |
| Michael-Ray Zwierschowski | International Taekwondo Champtionships | \$500.00 |
| Te Aute Senior Softball Team | National Softball Tournament Team | \$500.00 |
| Taamai Graham | Junior Rugby Vanuatu Tour | \$250.00 |
| Marshall Landon-Lane | Junior Rugby Vanuatu Tour | \$250.00 |
| Rita Hokianga | NZ White Socks Softbal Canada Cup Worlds | \$200.00 |
| Teagan Tautala-Hanita | National Softball Tournament | \$200.00 |
| Patrick Harding Rimene | Waka Ama World Championships | \$200.00 |
| Ripeka Edwards | NZ U14 Basketball Development Tour | \$200.00 |
| Wairarapa Waka Ama Club | Waka Ama World Championships | \$1,000.00 |
| Ashton Robinson | Open Mens Trans Tasman Touch Tournament | \$200.00 |
| Tikardan Tahiw-Stowers | Waka Ama World Championships | \$200.00 |
| Tremaine Rimene-Albrett | Waka Ama World Championships | \$200.00 |
| Melanie Gettins | International Softball World Cup Series | \$200.00 |
| Cail Terry | Waka Ama World Championships | \$200.00 |
| Cassius Marsh | Vanuatu 7's Rugby Tournament | \$200.00 |

Benefits to Members

| Recipient Name | Event of Activity | Value |
|--|--|-------------|
| Autumn Karatau-Te Kuru | NZ Softball Development Tour | \$200.00 |
| Bryan Nuku | Great Wall of China Marathon | \$200.00 |
| Elias Terry | Waka Ama World Championships | \$200.00 |
| Madison Gaiger | NZ U21 Canoe Polo World Championships | \$200.00 |
| Charlize Bartlett-Heathcote | Paris World Games | \$200.00 |
| Dean Sword | Waka Ama World Championships | \$200.00 |
| Rebecca Kamau | Cultural Exchange Kapa Haka | \$250.00 |
| Shaylea Te Rehu-Marshall | World Hip Hop Dance Championships | \$500.00 |
| Tyrese Christie | International Taekwondo Champtionships | \$500.00 |
| Taraipine Tomoana | International Taekwondo Champtionships | \$500.00 |
| Peter Cowan | Waka Ama World Championships | \$500.00 |
| Delia Ropiha | Cultural Exchange Kapa Haka | \$250.00 |
| Courtney Gettins | Womens Softball World Championships | \$500.00 |
| Heretaunga Ararau Senior Master Womens | Waka Ama World Championships | \$1,000.00 |
| Kataraina Pritchard | Cultural Exchange Kapa Haka | \$250.00 |
| Kura Kaupapa Māori O Ngāti Kahungunu Ki Heretaunga | Secondary Schools Kapa Haka | \$500.00 |
| Waiata Māori Music Awards Trust | National Waiata Māori Music Awards | \$12,000.00 |
| Te Whare Tu Taua o Aotearoa | Te Whare Tu Taua Graduation | \$15,000.00 |
| Kahungunu Rangatahi x 30 | Koroneihana | \$1,500.00 |
| Te Taiwhenua O Tamatea | Candidates Support | \$1,050.00 |
| Nga Kaihoe o Aotearoa | Waka Ama National hosted in Kahungunu | \$5,230.00 |
| Ross Shield Teams x 5 | Ross Shield Tournament Support | \$2,000.00 |
| EIT Te Ara o Takitimu Top Student | Te Ara o Takitimu Graduation | \$1,000.00 |
| Te Timatanga Ararau Trust | Iron Māori | \$10,000.00 |
| Te Taitimu Trust | Summer Camp | \$2,500.00 |
| HB Sports Park | HB Primary Schools Rugby Tournament | \$4,500.00 |
| Te Kei o Kahungunu - Kapa Haka | Kapa Haka Kahungunu Regionals 2018 | \$500.00 |
| Te Tono a te Taurapa - Kapa Haka | Kapa Haka Kahungunu Regionals 2018 | \$500.00 |
| Te Roopu Nga Waka - Kapa Haka | Kapa Haka Kahungunu Regionals 2018 | \$500.00 |
| Ngāti Kahungunu ki Heretaunga Pakeke - Kapa Haka | Kapa Haka Kahungunu Regionals 2018 | \$500.00 |
| Te Roopu o Wairarapa - Kapa Haka | Kapa Haka Kahungunu Regionals 2018 | \$500.00 |
| Tamatea Arikiniui -Kapa Haka | Kapa Haka Kahungunu Regionals 2018 | \$500.00 |
| Te Ropu Te Tawhaarangi - Kapa Haka | Kapa Haka Kahungunu Regionals 2018 | \$500.00 |
| Te Poi O Heretaunga - Kapa Haka | Kapa Haka Kahungunu Regionals 2018 | \$500.00 |
| Matangirau - Kapa Haka | Kapa Haka Kahungunu Regionals 2018 | \$500.00 |
| Te Rerenga Kotuku Culture Club - Kapa Haka | Kapa Haka Kahungunu Regionals 2018 | \$500.00 |
| Te Taipakeke o Ngāti Ranginui - Kapa Haka | Kapa Haka Kahungunu Regionals 2018 | \$500.00 |

Benefits to Members

| Recipient Name | Event of Activity | Value |
|---|--|-------------|
| Te Kapa Haka o Ngāti Ranginui - Kapa Haka | Kapa Haka Kahungunu Regionals 2018 | \$500.00 |
| Te Kura Kaupapa Māori O Ngāti Kahungunu Ki Heretaunga - Kapa Haka | Kapa Haka Kahungunu Regionals 2018 | \$500.00 |
| Hamuera Moteo Marae | Marae DIY | \$1,600.00 |
| Hau Ariki Marae Committee | Marae DIY | \$1,000.00 |
| Kapa Haka Regionals - Wairoa | Kapa Haka Regionals | \$15,469.00 |
| Awa Ink | International Cultural Tamoko to the World | \$1,000.00 |
| Te Taiwhenua O Heretaunga - sponsorship of matariki living taonga awards 2018 | Matariki Living Taonga Awards | \$10,000.00 |

SCHOLARSHIP REPORT

Ngāti Kahungunu Iwi Incorporated acknowledges that education is the key to personal, whānau, hapū and iwi development. The board allocated \$30,000 to support Ngāti Kahungunu tertiary students studying in 2018. NKII has a partnership with Victoria University and they have committed to match dollar for dollar given to successful Victoria students of up to \$10,000. The onus is on the Kahungunu students at Victoria University to apply for an iwi scholarship, and if eligible, Victoria will match the payment we give to their students which allows NKII to benefit more of its eligible applicants. We are building our relationship with other tertiary institutions who may offer something similar so we can benefit more tairā to receive funding support.

We are pleased to have supported 74 Kahungunu students with a general education scholarship of \$500. One research scholarship worth \$5,000 was issued to Ririwai Fox of Wairarapa. We congratulate and commend all tairā who are studying and building a fantastic future for their whānau.

| First name | Surname | Taiwhenua | Qualification sought |
|------------|----------|------------|---|
| Taisha | Abbott | Heretaunga | Bachelor of Health Sciences |
| Dallas | Adams | Tamatea | Masters |
| Melissa | Bennett | Wairoa | Bachelor of Nursing |
| Amy | Bennett | Heretaunga | Bachelor of Education |
| Jessica | Bird | Heretaunga | Bachelor of Māori |
| Sam-Marie | Brown | Wairarapa | Bachelor of Commerce majoring in Human Resource Management, |
| Regan | Campbell | Wairoa | Bachelor of Dental Surgery |
| Kacy | Christy | Heretaunga | Bachelor of Nursing |
| Bessie | Clarke | Wairoa | Bachelor of Environmental Planning |
| Sophie | Couper | Wairoa | Bachelor of Medicine & Bachelor of Surgery |
| Nina | Davies | Heretaunga | Bachelor of Arts (Māori) |
| Te Aroha | Devon | Wairoa | Bachelor of Nursing |
| Lucy | Edwards | Wairoa | Bachelor of Medicine and Surgery |
| Joanna | Gemmell | Wairoa | Bachelor of Psychology |

Benefits to Members

| First name | Surname | Taiwhenua | Qualification sought |
|--------------|------------|-----------------|---|
| Paris | Greening | Wairoa | Health & Social Services |
| Te Aranga | Hakiwai | Heretaunga | Bachelor of Arts |
| Sean | Hamilton | Wairoa | Health & Science - Midwifery |
| Benjamin | Hanara | Heretaunga | Physical Education, Sport & Exercise |
| Coline | Hape | Heretaunga | Bachelor of Mātauranga Māori |
| Lucky | Hawkins | Wairoa | Bachelor of Social Services |
| Chalee | Hawkins | Heretaunga | Bachelor of Business |
| Kayla | Healey | Wairoa | Bachelor of Midwifery |
| Tamara | Hemana | Wairarapa | Social Practice |
| Te Whetu | Henare | Wairoa | Masters of Māori Management |
| Mereaera | Hesketh | Heretaunga | Te Tohu Paerua mo Te Aka Whaararo/ Master of Professional Practice |
| Christine | Hilton | Heretaunga | Bachelor of Māori Development & Business Development |
| Rebekah | Horn | Tamakinui-a-Rua | Nursing |
| Ariki | Huata | Heretaunga | Business Management |
| Michael | Hunter | Tamatea | Masters of History |
| Angelia | Hura | Wairoa | PHD |
| Makere | Hurst | Wairoa | Masters of Economics |
| Kahu | Jakicevich | Wairoa | Visual Communication and Design |
| Rachael | Jones | Wairoa | Masters of Law |
| Reece | Joseph | Wairoa | Bachelor of Medicine and Surgery |
| Lee | Kershaw | Heretaunga | Te Panekiretanga o Te Reo |
| Reihana | Kingi | Heretaunga | Bachelor of Applied Science |
| Eilisha | McEwan | Wairoa | Bachelor of Arts |
| Chelsea | McLean | Heretaunga | Māori Health & Physical Education |
| Douglas | Meihana | Wairoa | Masters of Health Psychology |
| Noel | Morris | Wairoa | Bachelor of Applied IT |
| Ani | Morris | Tamatea | Te Panekiretanga o Te Reo |
| Melanie | Nuku | Heretaunga | Bachelor of Māori |
| Nohorua | Parata | Heretaunga | Bachelor of Arts |
| Te Waimarino | Patena | Heretaunga | Bachelor of Nursing |
| Nathaniel | Paul | Wairoa | Bachelor of Medicine and Surgery |
| Llanasa | Peachey | Heretaunga | Masters of Te Reo Māori |
| Kalwyn | Pereka | Wairarapa | Bachelor of Bicultural Social Work |
| Eve | Pogai | Wairoa | Bachelor of Nursing |
| Moananui | Rameka | Wairoa | Bachelor of Computer Science |
| Venus | Rangi | Wairoa | Masters of Business |
| Mihi | Ratima | Heretaunga | Bachelor Degree in Māori Visual Arts |
| Rachel | Rawiri | Heretaunga | Diploma in Māori & Pacific Development |
| Jessie | Robertson | Wairarapa | Psychology & Rehabilitation |
| Ihaia | Rolo | Heretaunga | Postgraduate Diploma Māori Medium Teaching and Learning |

Benefits to Members

| First name | Surname | Taiwhenua | Qualification sought |
|--------------|--------------|-----------------|--|
| Leonie | Ropiha | Tamatea | Ministry of Health- Māori Health Workforce Recruitment |
| Laurette | Siemonek | Wairarapa | Climate Change Science and Policy |
| Riki | Solomon | Wairoa | Doctorate in Indigenous Development and Advancement |
| Mihiterina | Sorenson | Te Waipounamu | Bachelor of Law |
| Zoe | Stevenson | Wairarapa | Occupational Therapy |
| Conor | Sutherland | Wairoa | Bachelor of Law and Bachelor of Arts |
| Melissa-Jane | Te Huki | Tamakinui-a-Rua | Postgraduate Teaching & Learning |
| Aidan | Te Wake-Hope | Wairoa | Bachelor of Business |
| Jessica | Toa-Wipere | Heretaunga | Bachelor of Business |
| Paul | Tukukino | Heretaunga | Bachelor of Commerce |
| Shaia | Twomey | Heretaunga | Bachelor of Teaching Māori Medium |
| Hinematawaia | Vercoe | Heretaunga | BA Honors |
| Jane | Vermunt | Wairoa | Global Health Science and Epidemiology |
| Loui | Whaanga | Wairoa | Bachelor of Māori Advancement |
| Simeon | Wilson | Wairoa | Bachelor of Oral Health |
| Maia | Winiana | Wairoa | Double Degree in Law and Arts Majoring in Indigenous Development |
| Sonia | Winikerei | Wairoa | Heke Toiora Whānau |
| Katherine | Winitana | Heretaunga | Bachelor of Commercial Music |
| Hemi | Wong | Heretaunga | Bachelor of Science - Neuroscience |
| Te Rimene | Workman | Wairarapa | Bachelor of Law & Commerce |
| Ririwai | Fox | Wairarapa | PHD Psychology |



Previous Research Scholarship recipient Reece Joseph pictured with his whānau. Reece has a Bachelor of Medical Science (Honours) for Medicine and Surgery.

Kahungunu Asset Holding Company Ltd Chairman's Report



Kahungunu, He tangata ahuwhenua, mōhio ki te whakahaere i ngā māhi o uta me ō tai.

Tihei Kahungunu!

It is my pleasure to provide the report of the Kahungunu Asset Holding Company Limited (the Company) for the year ended 30 June 2018.

Background

The Company was established in 2005 by Ngāti Kahungunu Iwi Incorporated (NKII) to receive and manage the Treaty of Waitangi fisheries settlement on behalf of Ngāti Kahungunu.

The Company vision is to “Empower Ngāti Kahungunu Iwi Incorporated through sustainable economic and commercial success” and has a mission to “grow and maximise the assets of Ngāti Kahungunu Iwi Incorporated so the full potential and aspirations of our iwi will be met.” To achieve the vision and mission of the Company, the following objectives have been set:

- **Kia Mataara:** To ensure the assets of the Company are invested prudently and within the Company’s purpose and rules.
- **Whakapakaritanga:** To improve the value of the Company’s capital base.
- **Whakamana:** Generate sufficient income to support the needs and aspirations of Ngāti Kahungunu Iwi Incorporated.

Nature of Business

The business of the Company is to receive and manage the fisheries settlement assets and other commercial assets of NKII for maximum commercial benefit. The Company has agreed a three year Statement of Intent with the NKII Board which has set the strategic direction for the Company for 2017 to 2020.

Fisheries Assets

In 2016 the Company entered into a partnership to purchase the Glomfjord. The Glomfjord commenced fishing in July 2017 as a fresh fish trawler. This initial period proved the capabilities of the vessel to catch its key target species. In March 2018 the Glomfjord received its first Maritime New Zealand safety survey and work began in April 2018 to refit the vessel into a factory trawler with on board employment of 14 people. The Glomfjord completed its maiden voyage as a factory trawler in August 2018. The catching, processing and exporting of Ngāti Kahungunu quota is a long held iwi aspiration. Implementing this aspiration has come at a cost, with a \$1,181,950 loss incurred by the Company due to the factory conversion and being unable to fish during four months of the financial year. This investment has been impaired due to its current operational financial position. The Company will monitor this and when the partnership makes a profit, the Company can consider reversing the impairment.

The Company’s other key assets are; fishing quota, the lobster processing facility in Auckland, shares in Aotearoa Fisheries Limited (AFL), Napier Mussels Limited, Fiordland Lobster Company Limited, and cash. The Company received the following settlement assets to manage on behalf of Ngāti Kahungunu in accordance with the Maori Fisheries Act 2004:

- August 2006: 162,942,485 quota shares valued at \$9,436,87¹

¹ The shares in AFL and quota received under the Fisheries Settlement process have been included in the accounts at the value established by Te Ohu Kaimoana on transfer.

Kahungunu Asset Holding Company Ltd Chairman's Report

- August 2006: 7874 income shares in Aotearoa Fisheries Ltd, valued at \$19,874,733
- July 2010: 501,527,278 quota shares valued at \$16,933,500
- September 2012: Aquaculture pre-commencement space settlement cash \$1,499,845
- Cash of \$2,030,106.

We have received a total of 15,748 shares (7,874 Voting, 7,874 Non-voting) in Aotearoa Fisheries Ltd (AFL) as part of the fisheries settlement which is a 6.3% holding in AFL. There will be no impairment of our shareholdings in AFL for this current year, although we may be required to undertake future re-valuations of our AFL shareholdings in the future. The Company will continue to add value to the current fisheries assets with a programme in place for further investment in the fishing industry.

Non Fisheries Assets

The Company will continue to investigate opportunities to diversify our asset portfolio. The Company takes a conservative approach to investment to deliberately reduce our exposure to undue risk. We are open to non-fisheries investment opportunities but it has to match our current investment strategy and risk profile. The investment in Tautāne Station in 2013 and the purchase of the rock lobster facility in Auckland in 2016 are important strategic acquisitions for the Company.

Financial Performance

The Company has recorded a before tax profit of \$3,201,179.

Gross Profit 2010-2018

| | |
|------------------|--------------------|
| 30-Jun-10 | \$2,733,836 |
| 30-Jun-11 | \$3,409,582 |
| 30-Jun-12 | \$3,872,548 |
| 30-Jun-13 | \$5,372,656 |
| 30-Jun-14 | (\$2,463,070) |
| 30-Jun-15 | \$4,906,408 |
| 30-Jun-16 | \$4,269,724 |
| 30-Jun-17 | \$3,800,206 |
| 30-Jun-18 | \$3,201,179 |

Retained Earnings 2010-2018

| | |
|------------------|---------------------|
| 30-Jun-10 | \$3,364,748 |
| 30-Jun-11 | \$4,983,779 |
| 30-Jun-12 | \$7,216,327 |
| 30-Jun-13 | \$10,948,984 |
| 30-Jun-14 | \$6,845,914 |
| 30-Jun-15 | \$9,712,322 |
| 30-Jun-16 | \$12,342,046 |
| 30-Jun-17 | \$16,601,235 |
| 30-Jun-18 | \$17,307,944 |

Kahungunu Asset Holding Company Ltd Chairman's Report

Equity 2010-2018

| | |
|------------------|---------------------|
| 30-Jun-10 | \$52,222,903 |
| 30-Jun-11 | \$53,992,484 |
| 30-Jun-12 | \$57,724,877 |
| 30-Jun-13 | \$61,457,534 |
| 30-Jun-14 | \$57,124,464 |
| 30-Jun-15 | \$61,567,929 |
| 30-Jun-16 | \$69,540,526 |
| 30-Jun-17 | \$68,726,842 |
| 30-Jun-18 | \$69,433,551 |

During the year the Company paid a dividend to NKII of \$2,494,470 (2017: \$4,613,890). The Company has reported an increase in equity of \$706,709 for the year ended 30 June 2018.

Financial performance by asset class

Shares in Aotearoa Fisheries Ltd

The Company received a cash dividend from AFL of \$737,488 during the year (2017: \$628,931).

The net book value (NBV) of the Company shareholding in AFL as disclosed in its Annual Report on 30 September 2017 was \$27,495,693.

Aotearoa Fisheries Shares NBV

| | |
|------------------|---------------------|
| 30-Jun-10 | \$22,547,575 |
| 30-Jun-11 | \$24,342,565 |
| 30-Jun-12 | \$24,969,398 |
| 30-Jun-13 | \$25,456,767 |
| 30-Jun-14 | \$19,777,784 |
| 30-Jun-15 | \$26,000,982 |
| 30-Jun-16 | \$25,736,263 |
| 30-Jun-17 | \$26,553,710 |
| 30-Jun-18 | \$27,495,693 |

Shares in Fiordland Lobster Company Ltd

The Company owns 136,670 shares in Fiordland Lobster Company Limited (FLC). This represents a 5.87% holding in FLC. These shares have been included in the Company accounts at cost. The net book value of the Company shareholding in FLC as disclosed in its annual report at 31 March 2018 was \$11,489,674 (31/3/17: \$10,403,222).

Kahungunu Asset Holding Company Ltd Chairman's Report

Fiordland Lobster Dividend

| | |
|------------------|------------------|
| 30-Jun-10 | \$120,590 |
| 30-Jun-11 | \$144,749 |
| 30-Jun-12 | \$159,224 |
| 30-Jun-13 | \$159,224 |
| 30-June-14 | \$263,180 |
| 30-Jun-15 | \$197,385 |
| 30-Jun-16 | \$263,180 |
| 30-Jun-17 | \$283,500 |
| 30-Jun-18 | \$341,675 |

Fiordland Lobster NBV shares

| | |
|------------------|-------------------|
| 30-Jun-10 | 2,658,504 |
| 30-Jun-11 | 3,733,886 |
| 30-Jun-12 | 4,297,351 |
| 30-Jun-13 | 5,087,409 |
| 30-Jun-14 | 5,934,847 |
| 30-Jun-15 | 7,595,503 |
| 30-Jun-16 | 9,785,972 |
| 30-Jun-17 | 10,403,222 |
| 30-Jun-18 | 11,489,674 |

Quota - ACE sales

Company earnings from the lease of Annual Catch Entitlement (ACE).

ACE Sales

| | |
|------------------|------------------|
| 30-Jun-10 | 3,163,240 |
| 30-Jun-11 | 3,153,147 |
| 30-Jun-12 | 3,300,792 |
| 30-Jun-13 | 3,276,042 |
| 30-Jun-14 | 3,309,567 |
| 30-Jun-15 | 4,113,130 |
| 30-Jun-16 | 3,568,914 |
| 30-Jun-17 | 2,983,198 |
| 30-Jun-18 | 3,467,373 |

Shares in Napier Mussels Ltd

The Company holds ownership of 91% of Napier Mussels Ltd. This amount has been written off due to impairment in value. No shareholder funding was made during the year (2017: \$9,100). The share advances are recorded at nil value as they do not currently have a realisable value.

Shares in Area 2 Finfish Management Company Limited

The Company holds 1 share in Area 2 Finfish Management Company Limited (Area2). This represents a 2.56% holding in that company. These shares have been included at cost. The net book value of the Company share in Area2 as disclosed in its annual report at 30 September 2016 was \$574 (31/3/2015: \$573).

Kahungunu Asset Holding Company Ltd Chairman's Report

Shares in Trident Systems General Partner Limited

The Company owns 3,705 shares in Trident Systems General Partner Limited (Trident). This represents a 1.18% holding in that company. These shares have been included at cost. The net book value of the Company's share as disclosed in its annual report at 30 September 2016 was Nil (30/09/2015: Nil).

Shares in Salco Quota Co Limited Partnership

The Company acquired 100,000 units with Salco Quota Co Limited partnership in 2014 for the purchase price of \$100,000. An additional 135,135 units were purchased during 2016 for \$250,000. All units have been included at cost.

Pania Reef Fisheries (GP) Limited

Pania Reef Fisheries (GP) Limited is the general partner of Pania Reef Fisheries Limited Partnership, of which the Company is a 50% shareholder. HBS Tuna Limited is the other 50% shareholder and joint equal partner in Pania Reef Fisheries Limited Partnership. Pania Reef Fisheries (GP) Limited is not currently trading.

Pania Reef Fisheries Limited Partnership

The Company made a capital contribution of \$750,000 to Pania Reef Fisheries Limited Partnership during the 2017 financial year. Control has been assessed as joint therefore the accounts have not been consolidated. The loss of \$1,118,950 based on the 30 June 2018 (2017: \$140,577) audited financial statements has been recognised.

Shares in KAHC Investments Limited

The Company owns 100 shares in KAHC Investments Limited. KAHC investments Limited has not traded during the year (2017:Nil).

Constitutional reporting

During the year to 30 June 2017 there have been no:

- Transactions with settlement quota that have resulted in a registered interest by way of caveat or mortgage being placed over the quota;
- Interest registered against the settlement quota shares;
- Sales or exchanges or acquisitions of AFL income shares.

Going Forward

The Company continues to grow and this brings a number of challenges to respond to. Investigations are underway to increase our investment in the fishing industry and subject to satisfactory due diligence and the support of the NKII Board, the Company will be in a stronger position to catch, process and export fish product to the world. Despite the impairment associated with the Pania Reef Fisheries Limited partnership, I believe the result for the year is pleasing, and I offer the attached consolidated statement of the Company financial performance for your consideration.

Tihei Kahungunu!



Rangī Manuel
Chairman

Kahungunu Asset Holding Company Ltd

Directors



Rangi Manuel
*Independent
Representative/
KAHC Chair*

- Secretary/Trustee, Wairoa Waikaremoana Māori Trust Board
- Possible training provider to Hawke's Bay Seafoods
- Chairman, Ohuia Incorporation
- Pohaturoa Committee
- Tātau Tātau Advisory Board for Asset Holding Company



Taine Randell
*Independent
Representative*

- Director/Owner, Kaitiaki Land & Services
- Director of the Ahuriri Airport Hawke's Bay
- Director Fiordland Lobster Company
- Director Kiwigarden
- Director Kahutia Ltd



Trevor Moeke
*Independent
Representative*

- Company Director, Akonga Holdings Ltd, Contract Management Consultancy
- Principal Advisor, Crown Māori Capability Office of Executive, The Treasury



Hayden Hape
*NKII Board Shareholder
Representative*

- Board Member, Ngāti Kahungunu Iwi Incorporated
- Chair, Tāmaki-nui-a-Rua Taiwhenua
- Member & Negotiator, Ngāti Kahungunu ki Wairarapa Tamaki nui a Rua Treaty Claimant Group
- Interim Chairman for the Ngāti Kahungunu Ki Wairarapa Tāmaki Nui a Rua Investment Trust
- Board Member, Taratahi
- Chairman, H.King Technologies

Kahungunu Asset Holding Company Ltd

Directors



Pania Tyson – Nathan
*Independent
Representative*

- Chair NZNP Mana
- Shareholder Financial Tyson-Nathan Associates
- Independent CE NZ Māori Tourism
- Shareholder Financial ANZ Kiwi Saver Scheme
- Shareholder Financial Native Games
- Shareholder Southern Cross Health
- Member Police Credit Union
- NZ Film Commission
- Ministerial Advisory Group on Trade



Heather Te Au – Skipworth
*Independent
Representative*

- Chief Executive Iron Māori
- HB District Health Board Member
- Chair Ngāti Ruanui Tahua limited
- Deputy Chair HB District Health Board Māori Relationship Board



Jonathan Dick
General Manager

- Appointed General Manager 1st February 2017
- Former Director-Pouarataki, Environment & Natural Resources for Ngāti Kahungunu Iwi Incorporated
- Previous roles include work on resource and fisheries management and Treaty of Waitangi historical settlements work



Taratahi students working on Tautane Farm.

Ngāti Kahungunu Iwi Incorporated Summary Financial Statements

FOR THE YEAR ENDED 30TH JUNE 2018

CONSOLIDATED SUMMARY STATEMENT OF FINANCIAL PERFORMANCE

| | Consolidated | | Parent | |
|--|------------------|------------------|------------------|------------------|
| | 2018 \$ | 2017 \$ | 2018 \$ | 2017 \$ |
| INCOME | | | | |
| Administration & Other Operating Revenue | 2,462,676 | 3,176,155 | 1,112,053 | 1,776,823 |
| Hi Ika Revenue | 2,285,423 | 2,842,641 | - | - |
| Mauri Ora Revenue | 55,913 | 104,863 | 55,913 | 104,863 |
| Dividend Revenue | 1,106,577 | 942,115 | 1,894,470 | 1,640,000 |
| Dividend Revenue - In advance | - | - | 600,000 | - |
| Dividend Revenue Te Matatini | - | - | - | 2,973,890 |
| Total Operating Income | 5,910,589 | 7,065,774 | 3,662,436 | 6,495,576 |
| LESS EXPENDITURE | | | | |
| Administration and other Operating | 1,670,525 | 2,212,401 | 1,176,367 | 1,939,089 |
| Hi Ika Revenue | 336,621 | 352,462 | - | - |
| Communication | - | 52,795 | - | 52,795 |
| Hauora | 186,428 | - | 186,428 | - |
| Mauri Ora | 1,620,737 | 1,663,774 | 1,620,737 | 1,663,774 |
| Te Matatini | - | 1,731,025 | - | 1,731,025 |
| Governance | 829,977 | 913,828 | 463,264 | 597,766 |
| Finance Costs | 343,952 | 442,046 | - | - |
| Total Expenses | 4,988,240 | 7,368,331 | 3,446,796 | 5,984,449 |
| NET SURPLUS (DEFICIT) AS AT JUNE 2018 | 922,349 | (302,558) | 215,640 | 511,127 |

CONSOLIDATED SUMMARY STATEMENT OF MOVEMENTS AND FINANCIAL POSITION

| | | | | |
|---|-------------------|-------------------|------------------|------------------|
| EQUITY | | | | |
| Opening balance as at 1 July | 69,720,486 | 70,263,044 | 3,193,647 | 2,922,520 |
| Net Surplus (Deficit) for the year | 922,349 | (302,557) | 215,640 | 511,127 |
| Contributions from (Distributions to owners) | (100,000) | (240,000) | (100,000) | (240,000) |
| TOTAL EQUITY | 70,542,835 | 69,720,487 | 3,309,287 | 3,193,647 |
| ASSETS | | | | |
| Total Non-Current Assets | 69,269,793 | 67,838,253 | 2,797,669 | 2,791,304 |
| Total Current Assets | 9,029,379 | 10,619,966 | 1,262,300 | 1,112,938 |
| TOTAL ASSETS | 78,299,172 | 78,458,219 | 4,059,969 | 3,904,242 |
| LIABILITIES | | | | |
| Total current liabilities | 856,338 | 837,734 | 750,680 | 710,594 |
| Total non-current liabilities | 6,900,000 | 7,900,000 | - | - |
| TOTAL ASSETS/LIABILITIES | 7,756,338 | 8,737,734 | 750,680 | 710,594 |
| TOTAL NET EQUITY AND LIABILITIES AS AT 30 JUNE | 78,299,172 | 78,458,221 | 4,059,696 | 3,904,242 |

Ngāti Kahungunu Iwi Incorporated Summary Financial Statements

FOR THE YEAR ENDED 30TH JUNE 2018

STATEMENT OF ACCOUNTING POLICIES

Reporting Entity

The reporting entity is Ngāti Kahungunu Iwi Incorporated (the Society). The Society is domiciled in New Zealand and is a charitable organisation registered under the Incorporated Societies Act 1908 and the Charities Act 2005.

The financial statements comprising the Society and its controlled entity, Kahungunu Asset Holding Company Limited, together the "Group", are presented for the year ended 30 June 2018.

These Group Financial Statements and accompanying notes as disclosed in this annual report are the summarised financial results of activities carried out by the Society and have not been subject to audit. These figures are derived from the full financial statements.

Basis of Preparation

Statement of Compliance

The Group financial statements have been prepared in accordance with Generally Accepted Accounting Practice in New Zealand ("NZ GAAP").

Ngāti Kahungunu Iwi Incorporated is deemed to be a Public Benefit Entity – a PBEs primary objective is to provide goods and services for community or social benefit.

Ngāti Kahungunu Iwi Incorporated as a public benefit not-for-profit entity is eligible to apply Not-for-profit Public Benefit Entity International Public Sector Accounting Standards (PBE IPSAS) on the basis that it does not have public accountability and it is not defined as large. The Board has elected to report in accordance with Tier 2 Not-for-profit PBE Accounting Standards and in doing so has taken advantage of all applicable Reduced Disclosure Regime ("RDR") disclosure concessions. This decision results in the Group not preparing a Statement of Service Performance for both reporting periods.

Kahungunu Asset Holding Company Ltd is deemed to be a For-profit entity as its primary objective is to receive and manage the Fisheries Settlement assets of Ngāti Kahungunu Iwi and other funds provided for maximum commercial benefit.

Kahungunu Asset Holding Company Ltd is eligible to apply Tier 2 For-profit accounting requirements as it does not have public accountability; and is not a large for-profit sector entity as it has total expenses less than \$30 million. The Board has elected to report in accordance with New Zealand Equivalents to International Financial Reporting Standards Reduced Disclosure Regime (NZ IFRS RDR) and in doing so has taken advantage of all applicable Reduced Disclosure Regime ("RDR") disclosure concessions.

The Group Financial Statements comply with Public Benefit Entity International Public Sector Accounting Standards ("PBE IPSAS") and other applicable financial reporting standards as appropriate that have been authorised for use by the External Reporting Board for Not-For-Profit and For-Profit entities. Kahungunu Asset Holdings Company Limited has been restated from NZIFRS RDR to PBE IPSAS RDR for Group Reporting.

Ngāti Kahungunu Iwi Incorporated Summary Financial Statements

Summary of accounting policies

The significant accounting policies used in the preparation of these financial statements are set out in the full financial statements.

These summary Financial Statements cannot be expected to provide as complete an understanding as provided by the full financial statements. An unmodified opinion was issued on the full group financial statements.

Each tribal member is entitled to obtain a copy of the full financial statements upon request. Requests should be made to the Ngāti Kahungunu Iwi Incorporated Director of Smart Services, Ruth Wong - Ngāti Kahungunu Iwi Incorporated, Taikura House, Level 1, 304 Fitzroy Avenue, Hastings.06 8762718 or toll free 0800 524 864. Email ruth@kahungunu.iwi.nz.

The Ngāti Kahungunu Iwi Incorporated Board authorised the issue of the full financial statements on 2nd October 2018.



Chairman - Ngahiwi Tomoana
2 October 2018



Board Representative - Michael Anthony Paku



Ngāti Kahungunu Iwi
INCORPORATED

Annual Plan 2018-2019

VISION STATEMENT

“Kahungunu – ki te whaiao, ki te ao mārama”
“Achieving excellence in all areas of our lives”

MISSION STATEMENT

“Kia maumahara ki te mana āhua ake o Ngāti Kahungunu”
“Uphold the absolute uniqueness of the living breath of Kahungunu
and enhance the mana and well-being of Ngāti Kahungunu Iwi”

STRATEGIC OBJECTIVES

Ngāti Kahungunu – Culturally Strong
Ngāti Kahungunu – Healthy and Vibrant
Ngāti Kahungunu – Economically Strong
Ngāti Kahungunu – Global Citizens
Ngāti Kahungunu – Self Determined
Ngāti Kahungunu – Healthy Environment
Ngāti Kahungunu – Making our Mark

Annual Plan

Ngāti Kahungunu Iwi Incorporated (NKII) recognizes the need to review its objectives and align its strategies with the needs of whānau & hapū. In March 2018 the NKII Board reviewed the 2017-2018 Annual plan to evaluate what we have achieved and carefully assess the best way to drive the organization forward into the new year. The Board identifies the importance of remaining relevant with the current environment and ensuring that our efforts contribute to our 25year vision.

The Ngāti Kahungunu Iwi Incorporated Annual Plan describes the key objectives for the iwi. These objectives are based on the following Ngāti Kahungunu Iwi Inc. strategies: He Mahere Rautaki Hai Haumanu I Te Reo O Ngāti Kahungunu / Kahungunu, kia eke - The Revitalisation of Te Reo o Ngāti Kahungunu, Kahungunu Ki Uta, Kahungunu Ki Tai - Marine and Freshwater Fisheries Strategic Plan and Te Ara Toiora O Ngāti Kahungunu, the Kahungunu Wellbeing Strategy.

KAHUNGUNU, KIA EKE! STRATEGIC PLAN FOR THE REVITALISATION OF TE REO MĀORI WITHIN NGĀTI KAHUNGUNU

- Plan, lead and manage a Whakamana Wānanga to support the revitalisation of the Ngāti Kahungunu Paepae;
- Plan lead and manage a Te Reo Symposium to improve the quality of reo, promote the use of dialectal variations unique to Ngāti Kahungunu and strengthen the desire of our people to learn our native language;
- Continue to support the objectives of the MOU with the Ministry of Education;
- Develop and publish resources to assist whānau in learning and retaining our language through waiata, ngeri and games;
- Plan, lead and manage a Kura Reo event to strengthen opportunities for people to learn Te Reo Māori; and
- Keep our iwi members informed.

NGĀTI KAHUNGUNU NATURAL RESOURCES & ENVIRONMENT KAHUNGUNU KI UTA, KAHUNGUNU KI TAI – MARINE AND FRESHWATER STRATEGIC PLAN

- Advocate for Ngāti Kahungunu objectives and values to be incorporated into natural resources decision making and policy developed by local, regional and central government;
- Develop Ngāti Kahungunu Taiao policy;
- Support hapū to progress hapū management plans to enhance their role as Kaitiaki of the natural resources;
- Develop quality relationships with organisations to assist us to achieve our natural resource objectives which help to build the capacity and capabilities of our people;
- Plan, lead and manage the Fish Hook Summit to give Kahungunu whānau, hapū the opportunity to report their developments to the iwi and to engage with and learn from other kaitiaki in the rohe; and
- Keep our iwi members informed.

TE ARA TOIORA O NGĀTI KAHUNGUNU KAHUNGUNU WELLBEING STRATEGY

- Continue to meet with Te Tumu Whakahaere o Te Wero advocacy group to determine the health and wellbeing needs of our people;
 - Establish and consolidate strategic relationships with key central and local government agencies to facilitate and increase effective provision that contribute to achievement of strong, healthy, vibrant whānau. These agencies include Oranga Tamariki, Corrections, Justice, Housing and Employment agencies;
 - Fill the Director of Te Ara Toiora vacancy to direct, manage and monitor these aspirations; and
 - Keep our iwi members informed.
-

NGĀ POU TAUNAKI - SMART SERVICES

- Increase the vibrancy and wellbeing of Kahungunu whānau through events by organizing and managing Waitangi Day, 7 Matariki events, and the AGM Pā Sports;
 - Maintain the iwi registration database and update incorrect information;
 - Build networks with organisations and seek smarter and innovative ways to deliver benefits to members;
 - Continue to provide benefits to members including scholarships, sponsorships, pātaka and other free or heavily discounted services;
 - Provide high level secretarial administration services and office systems; and
 - Regularly communicate with whānau through online website, Panu ki te iwi emails, facebook and everywhere we can to inform and keep whānau abreast of iwi activities and opportunities for whānau hapū and iwi development.
-

NGĀ TŪHONOHONOTANGA - POLITICAL

- Hold the triennial Ngāti Kahungunu Iwi Incorporated Board Elections;
- Strengthen our relationship with the hapū claimant groups within the Ngāti Kahungunu rohe;
- Improve Kahungunu representation on local and regional councils;
- Influence policy developed by government agencies, local and regional councils;
- Monitor the performance of these entities based on Kahungunu criteria; and
- Keep our iwi members informed.

Annual Plan

TE WHAKATIPU ŌHANGA - ECONOMIC DEVELOPMENT

- Develop and progress the economic status of Kahungunu whānau, hapū, iwi by continuing to work with our iwi partners to progress and implement the Ngāti Kahungunu Economic Development Strategy; and
- Keep our iwi members informed.



Te Matau-a-Māui Waka

24th November 2018

Ngāti Kahungunu Iwi Incorporated
Annual General Meeting
Splash Planet, Grove Road, Hastings

11:00am

Standard Business

- Mihi whakatau
- Hīmene/Karakia
- Apologies
- Maumahara
- Minutes of AGM 2017
- Receive Annual Report 2017-2018
 - Chairman's Report
 - Kahungunu Asset Holding Company Report
 - Audited Financial Statements 2017-2018
- Re-appoint Auditor
 - Annual Plan 2018-2019
 - Elections 2019

11:30am

Presentations

11.45am

Himene/Karakia

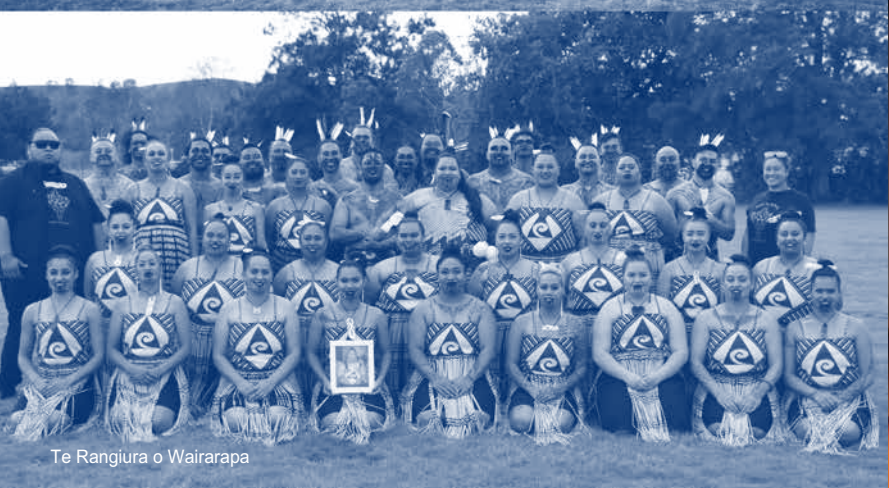
Four Kapa Haka going through to the National Te Matatini event.



Te Rerenga Kōtuku



Ngāti Ranginui



Te Rangiura o Wairarapa



Matangirau

Matangirau Wairoa



Te Rerenga Kotuku



Te Rangira o Wairapa



Ngāti Ranginui





Ngāti Kahungunu Iwi
INCORPORATED

TAIKURA HOUSE 304 FITZROY AVENUE, PO BOX 2406, HASTINGS 4153, NEW ZEALAND
PHONE 06 876 2718 • FAX 06 876 4807 • TOLL FREE 0800 KAHUNGUNU (0800 524 864)
EMAIL: ruth@kahungunu.iwi.nz
WEB: www.kahungunu.iwi.nz



AGM 24 NOVEMBER
11AM SPLASH PLANET, HASTINGS