

Hoea rā



Ngāti Kahungunu Iwi
INCORPORATED

Annual Report 2020 - 2021

Published November 2021

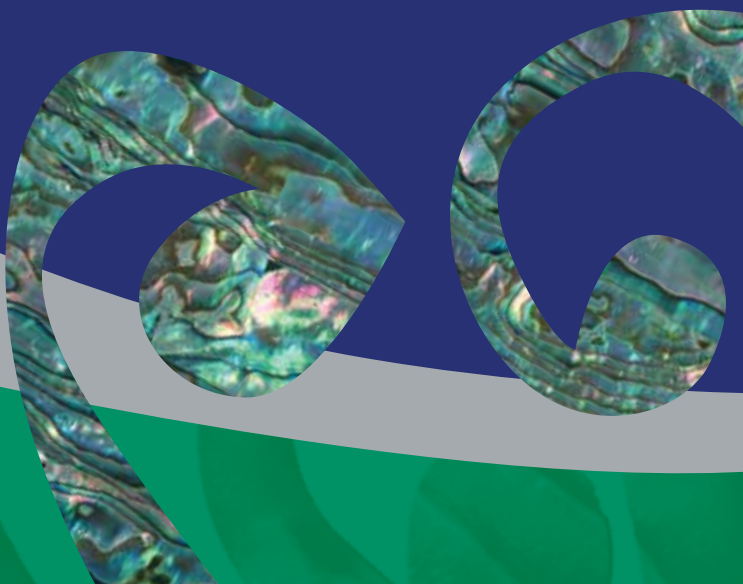


Table of Contents

	Page
Purpose, Vision & Mission	1
Chairperson's Report	2
Chief Executive's Statement	3
Our Year at a Glance 2020-2021	5
Board Members 2019-2022	6
Board Elections 2022	8
Staff Members 2021	9
Ngāti Kahungunu Iwi Incorporated Organisation Structure	10
Te Reo, Tikanga & Mātauranga	11
Te Taiao Me Ōna Rawa	12
Te Ara Toiora	14
Benefits to Members	17
Kahungunu Asset Holding Company Ltd Chairman's Report	25
Kahungunu Asset Holding Company Ltd Directors	29
Ngāti Kahungunu Iwi Incorporated Summary Financial Statements	31
Annual Plan 2021-2022	35
AGM Agenda	39



Top: Kahungunu Iwi leaders with PM Jacinda Ardern at the ground breaking of the \$620m, 11.5km Te Ahu a Turanga Manawatū Tararua Highway. (Dec 2020)
Bottom: Kahungunu ki Tāmaki nui a Rua Chairman Hayden Hape signs the formalisation of a partnership regarding the building of the Highway. (Aug 2020)

Purpose, Vision & Mission

Ngāti Kahungunu Iwi Incorporated, with the mandate to represent the people of Ngāti Kahungunu, is the governing body for all aspects of Ngāti Kahungunu Iwi development.

The purpose of Ngāti Kahungunu Iwi Incorporated is to:

- Promote or assist the education of Ngāti Kahungunu Iwi
- Promote the custody and preservation of the beliefs, customs and language of Ngāti Kahungunu Iwi
- Promote the social and economic welfare advancement and vocational training of Ngāti Kahungunu Iwi
- Promote personal, whānau and community health and wellbeing and raise the living standards of Ngāti Kahungunu Iwi
- Promote high quality communications to and for the benefit of the members of Ngāti Kahungunu Iwi

Strategic Objectives

In September 2001 consultation with whānau throughout the rohe of Kahungunu occurred. Whānau shared their views, aspirations and desires which helped shape the development of a vision to guide Ngāti Kahungunu into the future. The vision, known as Kahungunu 2026, outlines the vision and mission statements and seven identified strategic objectives to focus on. The Ngāti Kahungunu Iwi Incorporated planning framework continues to outline priorities, activities and desired outcomes that link directly to the seven strategic objectives within the Kahungunu 2026 vision.

The seven strategic objectives are:

- Ngāti Kahungunu - Culturally Strong
- Ngāti Kahungunu - Healthy and Vibrant Whānau
- Ngāti Kahungunu - Economically Strong
- Ngāti Kahungunu - Informed and Participating Citizens in the World
- Ngāti Kahungunu - Independent and Self Determined
- Ngāti Kahungunu - Healthy, Thriving and Sustainable Environment
- Ngāti Kahungunu - Making our Mark

Vision Statement

"Kahungunu - ki te whaiao, ki te ao mārama"

Achieving excellence in all areas of our lives

Mission Statement

Kia maumahara ki te mana āhua ake o Ngāti Kahungunu

Uphold the absolute uniqueness of the living breath of Kahungunu

"To enhance the mana and well-being of Ngāti Kahungunu Iwi"

Reporting

Ngāti Kahungunu Iwi Incorporated has an obligation to provide an 'Annual Report' for its membership to account for the previous financial year 1 July 2020 – 30 June 2021. This document provides a summary report against the objectives set out in the 2020-2021 Annual Plan. It includes steps taken to increase the registration database and gives an overview of the organisation's performance, including changes in the value of its assets, profit distribution and the summary financial statements.

Chairperson's Report

*Kahungunu, mana!
Kahungunu, tangata!
Kahungunu, iwi!
Kahungunu, ki te ao mārama e!*



*Kia ora tātau katoa i te tau kua hori ake nei
– piki mai, heke atu! Tangihia ō tātau maha mate,
tukuna rātau ki te huinga o Matariki. Whakanuitia
tātau te hunga ora, ngā urupā o rātau mā,
Tihei Kahungunu!*

This year has been dominated by COVID-19 and apart from our fishing operations, Ngāti Kahungunu has turned COVID on its head by promoting all our whānau interests above everything else. We have drawn down our reserves and drawn on all of our relationships with our community and private sector partners and we have fed, clothed and housed our iwi. We have pulled out all the communication stops to ensure that there's not one corner of Kahungunu neglected in this process. We have poured hundreds and thousands of dollars into our communities to help everyone. We have stepped above our comfort zones to lead locally, regionally and nationally. During lockdown periods while most of the country closed off, Ngāti Kahungunu with its unique manner has opened up opportunities for whānau, hapū iwi and waka to participate abroad nationally and internationally.

Every component of our work from our office and from our annual plan has been recorded and diligently reported against, but the political and social influence that we have shared will be measured in a future time by a future generation who will see the long term benefits and add to the strategies that will further support a healthy thriving future.

I am extremely pleased in which the way our settlement entities have worked shoulder to shoulder with our taiwhenua to help elevate communities in their time of need. This has not been restricted to our rohe alone, but throughout the country where our iwi members now work and thrive. If this momentum is maintained and enhanced then we indeed have an influential future for generations to come.

This is driven from a small tight multi skilled team with high trust modeling of each other and our iwi constituent organisations. We have a strong iwi and we have strong hapū and settlement collectives. Our task in front of us is to ensure we have strong and vibrant whānau and we dedicate our energies to see that this happens.

Kei te mihi ki a koutou e noho mai nā i ō tātau tini marae kāinga, kia haumaruru te noho! Kia noho te ora roa ki a koutou katoa!

Kahungunu, kia ora!

A handwritten signature in dark ink, appearing to read 'Ngahiwi Tomoana', written in a cursive style.

Ngahiwi Tomoana
Tumuaki - Chairman

Chief Executive's Statement

*He tau pai te tau,
He tau roa te tau,
He tau uaua te tau,
He tau nui te tau.*

Tēnā tātau katoa i roto i te āhuatanga ki ō tātau mate maha i takoto ai ki runga i ō tātau marae maha. Ka tangi te ngākau ki a rātau mā. Waiho ake rātau ki te ao wairua. Ka mihi rā te ngākau ki te hunga ora, Ngāti Kahungunu mai i runga ki raro, tēnā koutou, kia ora tātau katoa.



As I am writing this report I want to acknowledge the passing of Des Ratima who was a resolute and devout man in his faith and as an advocate for his whānau, his community of Whakatū, and whānau Māori katoa. Although some may not have agreed with how he did things, his reasons for “doing” were without question. Des was a man of action and did not sit or step back because that’s what our whānau and our communities deserve. He was also a great strategic thinker and was ahead of his time. At a personal level, I will miss him for his wise counsel and his challenges he put to me. He is and continues to be in death a champion of his people.

Moe mai rā, e te rangatira, i roto i te rangimārie. Ka nui te aroha ki a koe, Evelyn, me tō whānau.

These are anxious times for whānau with the COVID-19 Delta variant making its presence felt in Aotearoa. Ngāti Kahungunu Iwi have reignited the Tihei Mauri Ora Centre led by our Chair and Henry Heke with the support of Health Hawke’s Bay Primary Health Organisation, Hawke’s Bay District Health Board and our communications to our wider Iwi network led by our Director Ruth Wong. I want to thank both these organisations for their continued commitment to the Iwi and the wellbeing of whānau pounamu. Alongside of this our 6 hubs operated by ngā Taiwhenua o Ngāti Kahungunu are actively working with their partners to provide support to the whānau pounamu in their respective rohe. In May of this year we were successful in acquiring support for these hubs through Te Puni Kōkiri’s Building Sustainable and Resilient Communities Fund. This is a significant investment that enables each Taiwhenua to increase the capability and capacity of their hubs and community to respond to crisis; like the current outbreak of the Delta variant, based on their own individual community’s strengths, needs and aspirations. This investment also recognises the approaches that were developed during the previous lockdown period and its applicability within the current context.

COVID-19 has also changed how we do things within the Tari and none is more visible than how we run our events. Our events are extremely important as they are our opportunity to see and engage with our whānau and hear your feedback first hand. While we had to cancel our remaining Matariki events last July due to COVID-19, with the expertise of our Events team we were able to hold the last of the Matariki celebrations virtually, broadcasting live from our Tari and bringing together presentations and guest appearances of whānau from across our rohe. The standouts for me were Crystal Edwards who did an amazing job as MC and Dr Rangi Mātāmua’s kōrero on Matariki. This type of ingenuity and innovation is an example of what positions our Iwi across our Directorates in a different space to any other. Unfortunately, we were not able to hold our Te Reo symposium “Te Reo ki Tua” due to a number of reasons. Jeremy is “biting at the bit” and he and his team are readying themselves for the rescheduled time of April 2022. Shaping up to be a “not to miss” event.

Ngāti Kahungunu continue to advocate for and on behalf of our people and those that reside within our rohe. Over the last 12 months the demand for this advocacy has increased significantly across the Tari and Governance. The demands and pressures are outlined in the Directorate reports further in this report. However, I want to assure our whānau that while our Tari is small in size, every one of our team are experts and are respected for the knowledge and experience they bring to the table within their chosen field. We fiercely and resolutely hold our position and will do what is needed to ensure that the voice of whānau, hapū and Iwi are heard. This is demonstrated in our advocacy directly with Ministers and Crown senior officials, through to Local government and communities.

Chief Executive's Statement

As a member of Te Kāhui Ōhanga (TKO) which is a collective of Settlement entities, Taiwhenua and Iwi within Hawke's Bay for Matariki Regional Economic Development group, Ngāti Kahungunu continue to advocate for mechanisms that support the growth of the Māori economy, businesses and overall economic position of whānau. Social (a.k.a. Progressive) Procurement is one of these mechanisms that, with the support of our local government partners has been applied to the provisional growth fund projects. Through this single mechanism we have seen a "shift change" within the infrastructure sector with Māori Businesses being the lead for many of these projects. This has also created opportunities for skill acquisition and more sustainable employment opportunities for whānau Māori. As the lead for Pou Tahi Whānau wellbeing it is also important to remind the Matariki caucus of the positive impacts that actions under the Matariki strategy can generate that contribute to improved wellbeing for whānau katoa. Our own K3 Kahungunu Property Company has adopted Whakatū Whare (Social Procurement) as one of its 3 pillars of how they do business along with Whakapakari Tāngata (Growing our people) and Whakatipu Rangatiratanga (Growing Māori ownership).

We continue to also advocate at a national level for changes in the current policy settings under the Social (a.k.a. Progressive) Procurement legislation that better enable the economic growth of the with Crown Ministers through Pou Taha which is the Economic Forum for the National Iwi Chairs Forum. This forum is chaired by Ngahiwi Tomoana with technical expertise provided by our Tari members Danielle Keil and Taash Romana. Crown Ministers have agreed to work collectively on the advancement of 4 priorities with Pou Taha. Social Procurement is one of these along with Housing, Pōkai Ao and WAI262. The provision of quality, affordable and accessible housing is a priority for Ngāti Kahungunu as it is for many Iwi. We are working with the Crown Ministers and agencies i.e. Te Puni Kōkiri, Ministry for Housing and Urban Development and Kāinga Ora to identify solutions across a number of settings and pilots with movement likely in the coming few months.

Last year, Ngāti Kahungunu Iwi entered into an agreement with Te Toki Waka Hourua to manage the day to day operations and maintenance of Te waka, Te Matau a Māui and to provide training to potential crew. This has been a great success with our numbers able to crew our waka increased and overall knowledge of our rich navigational history shared with many. We express our thanks to Hoturoa Kerr, John Reid and their many whānau who supported us. Our waka has never looked so beautiful. This year the management of our waka returns to Piripi Smith and Ātea a Rangi Educational Trust. Piripi has added to the good work of Te Toki and is in the process of training 3 potential skippers to provide further capability and capacity for Te waka, Te Matau a Māui.

A couple of final messages from me. Firstly, I want to thank my team. I am forever humbled by your trust and faith in my leadership and always invigorated by the commitment and innovation you show to your mahi, your whānau and the wider Kahungunu whānau. Secondly, to our Board and our Chair, thank you for your continued support to our tari, your innovative thinking and unflinching advocacy and leadership. To our partners and champions; thank you for your confidence and trust to work alongside us. And finally whānau to you. I hope that you continue to be supportive of the kaupapa and the mahi that we do as your servants. I hope you all remain safe and healthy and look after yourselves in these uncertain times.

Whaia te Rongoā,
Āraimate! Āe! - Vaccinate! YES!
Tiakina koe - Protect you
Tiakina tō whānau - Protect yours
Tiakina tātau katoa - Protect us

Tihei mauri ora!



Chrissie Hape

Kaiwhakahaere Matua - Chief Executive

Our Year at A Glance 2020-2021

Date	Activity
July 2020	2020-2021 Matariki Calendar delivered
July 2020	Tihei Kahungunu newspaper goes fortnightly
July 2020	Drive in Matariki Events in Dannevirke and Hastings
July 2020	The inaugural virtual Matariki event held online
Oct 2020	Te Kura Reo o Ngāti Kahungunu
Nov 2020	15th AGM Pā Sports held
Dec 2020	Iron Māori Quarter and Half supported
Feb 2021	Kahungunu Waitangi Day Celebrations
Apr 2021	Government launches Māori Pathways partnership with NKII
May 2021	Kahungunu Fish Hook Summit
Jun 2021	Wairarapa Tirama Matariki Light Glow
Jun 2021	Benefits to Members - scholarship grants
All year	COVID Support filtered out
All year	Benefits to Members - sponsorship grants
All year	Newly registered iwi members
All year	Tangihanga - Pataka Fish given to whānau



Whānau enjoy the free kai hau kai and free Mayons rides on Waitangi Day.

Board Members 2019-2022



Ngahiwi Tomoana

Chairman

Ko Kahurānaki te maunga
Ko Ngaruroro te awa
Ko Waipatu te marae
Ko Ngāti Hawea te hapū
Ko Ngāti Kahungunu te iwi
Ko Ngahiwi Tomoana tōku ingoa



Haami Hilton

Kaumātua Representative

Ko Kahurānaki te maunga
Ko Ngaruroro te awa
Ko Poukawa te waiū
Ko Kahurānaki te marae
Ko Te Rangikoianake te hapū
Ko Te Whatuiāpiti te tangata
Ko Te Hāpuku te rangatira
Ko Tākitimu te waka
Ko Ngāti Kahungunu te iwi
Ko Haami Te Kuru Hilton tōku ingoa



Hori Reti

Te Whanganui-a-Ōrotu Taiwhenua Representative

Ko Maungaharuru te maunga
Ko Tūtira te waiū
Ko Te Ngaru te awa
Ko Tangitū te moana
Ko Tāngoio te marae
Ko Hori Reti tōku ingoa



Waiora Rogers

Heretaunga Taiwhenua Representative

Ko Kahurānaki te maunga
Ko Ngaruroro te awa
Ko Waipatu, ko Korongata ngā marae
Ko Ngāti Hawea, ko Ngāti Poporo ngā hapū
Ko Tākitimu te waka
Ko Ngāti Kahungunu te iwi
Ko Waiora Rogers tōku ingoa



Nigel How

Te Wairoa Taiwhenua Representative

Ko Taumutu te maunga
Ko Mangapoike te awa
Ko Iwitea te marae
Ko Ngāi Tahu te hapū
Ko Ngāti Kahungunu te iwi
Ko Nigel How ahau

Board Members 2019-2022



John Barry Heperi-Smith

Tamatea Taiwhenua Representative

Ko Te Rangi-tapu-ā-whata te maunga
Ko Whatumā te waiū
Ko Takitimu te waka
Ko Te Rongo-a-Tahu te marae
Ko Ngāti Kahungunu te iwi
Ko Ngāi Te Kikiri-o-te-Rangi, ko Ngāi Tahu
Mākanui, ko Ngāi Toroiwaho ngā hapū
Ko John Barry (JB) Heperi-Smith tōku ingoa



Hayden Hape

Kahungunu ki Tāmaki-nui-a-Rua Taiwhenua Representative

Ko Kaitoke te marae
Ko Ngāti Pakapaka te hapū
Ko Tākitimu te waka
Ko Ruahine te maunga
Ko Manawatū te awa
Ko Ngāti Kahungunu te iwi
Ko Hayden Hape tōku ingoa



Melissa Ihaka

Kahungunu ki Wairarapa Representative

Ko Takitimu te waka
Ko Rangitūmau te maunga
Ko Ruamāhanga te awa
Ko Ngāti Kahungunu te iwi
Ko Hurunui-o-Rangi te marae
Ko Melissa Ihaka tōku ingoa



Owen Purcell

Taura here Representative

Ko Kahurānaki, ko Te Mata o Rongokako ngā maunga
Ko Ngaruroro te awa
Ko Ruahāpia te marae
Ko Ngāti Hori, ko Ngāti Hawea ngā hapū
Ko Tākitimu te waka
Ko Ngāti Kahungunu te iwi
Nō Kirikiriroa ahau
Ko Owen Purcell tōku ingoa



Brian Ruawai-Hamilton

Taura here Representative

Ko Waikaremoana te moana
Ko Waiau te awa e whāngai nei i te whenua me te tangata
Ko Rangiahua, ko Te Kuha, ko Arimāwhā ngā marae
Ko Tamaterangi te tangata
Ko Brian Ruawai-Hamilton tōku ingoa

Board Elections 2022

The Ngāti Kahungunu Iwi Incorporated (NKII) triennial Board Election is due to take place on Tuesday 26 April 2022.

During this time nine (9) elections take place simultaneously for ten (10) positions on the Board as follows; The election of six (6) Taiwhenua/Rohe representatives, two (2) Taurahere representatives (from the new Northern and Southern Districts), one (1) Kaumātua representative and (1) Chairman position.

All members currently on the NKII Board were participants of the 2019 NKII Board election process. All participants whether candidate, nominator or voter, must be registered to participate in this election. All registered participants must be Nga Uri a Kahungunu – descendants of Kahungunu, 18 years of age or over at the time of the election (26 April 2022).

MARAE, TAIWHENUA/ROHE & TAURAHERE NOMINATIONS

Marae/Taiwhenua elections are held and run in accordance to their own constitutions. It is important that Marae/Taiwhenua elections are completed by the 1st February 2022 in order for newly elected board members to participate in the iwi elections if they so desire.

- The Taiwhenua/Rohe Boards are made up of registered Marae representatives who have been appointed or elected by their respective marae and/or they have been elected in accordance to their respective constitutions.
- The Taurahere Boards are made up of registered Kahungunu representatives who reside outside the Kahungunu rohe.
- Candidates for the Taiwhenua/Rohe/Taurahere representative positions on the Board will come from the current pool of active Taiwhenua/Rohe/Taurahere Board members at the time nominations open for the iwi election which is 4 February 2022.

KAUMĀTUA NOMINATIONS

Kaumātua nominees come from an open pool. Candidates must be able to tick yes to all of the questions below to be eligible.

- Be a registered tangata whenua member of Kahungunu descent?
- Be 60 years or older?
- Be interested in the future of Ngāti Kahungunu Iwi?
- Be registered to participate in the 2019 election?
- Be proficient in Kahungunu tikanga, kawa and reo?
- Reside in the Kahungunu rohe?

CHAIRMAN NOMINATIONS

Nominations for the Iwi Chair position will come from the pool of Taiwhenua Board members who meet the criteria requirement at the time nominations open for the iwi election which is 4 February 2022. The incumbent Chair becomes an eligible candidate to the position of Chairperson without going through a marae/Taiwhenua election process as stated in 9.2.1 in the Constitution.

IWI ELECTION TIMELINE 2022

By Tuesday 1 February 2022	Taiwhenua and Taurahere elections are completed (separate process)
Friday 4 February 2022	Nominations Open
Friday 28 February 2022	Nominations Close (12noon)
Friday 28 February 2022 – 11 March 2022	Public Notice – Candidate Names announced
Monday 7 March 2022	Receive Members Data
Thursday 24 March 2022	Delivery of Voting Mailers Progressive roll scrutiny, Early processing, Special Voting period
Tuesday 19th April 2022	Registrations Close (4pm)
Tuesday 26th April 2022	Election Day, Voting closes (12noon)
Tuesday 26th April 2022	Special General Meeting (4:30pm)
Tuesday 3 May 2022	Declaration of Results

INDEPENDENT RETURNING OFFICER

The 2022 Independent Returning Officer is Dale Ofoske of Election Services.

Staff Members 2021



Chrissie Hape
Chief Executive



Ruth Wong
Director of Smart
Services and
Communications
Advisor



Ngaio Tiuka
Director of
Environment and
Natural
Resources



**Jeremy Tātere
MacLeod**
Director of Te Reo,
Tikanga and
Mātauranga



Shade Smith
Environment &
Natural Resources
Senior Analyst



Tawehi Munro
Mātauranga
Manager, Ministry
of Education



Krystal Haimona
Lead Advisor
Corrections



Ana Carroll
Senior Advisor
Oranga Tamariki



Melissa White
Senior Advisor
Social
Development



Errol Kalmancsi
Corrections Offender
Recruitment
Consultant

Te Ara Toiora Team



Kerrin Fair
Database
Administrator
Office IT Expert



Brooke Greville
General Office
Administrator



Hine Hape
Finance Officer



Michelle Ferris
Executive
Assistant



Te Rangi Huata
Events &
Promotions
Manager

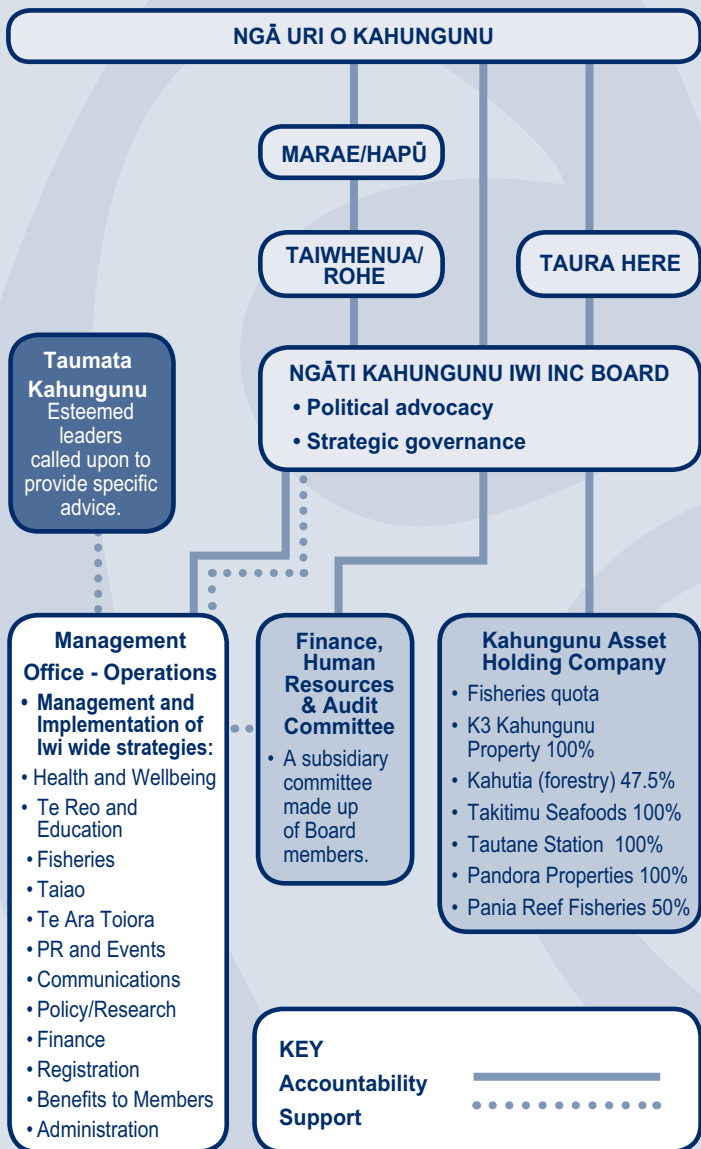


Danielle Keil
Special Projects
& Events
Support

Smart Services Team

Ngāti Kahungunu Iwi Incorporated Organisation Structure

Ngāti Kahungunu Iwi Incorporated is governed by ngā uri o Kahungunu through its constitutional organisational structure. This diagram depicts the structure of the iwi from marae/hapū to governance and through to management and workstream level.



Te Reo, Tikanga & Mātauranga

Tau atu, tau mai, karawhiua ana tātau ki te mahi a aituā, he huti mai tāna mahi i tēnei mea, i te tangata, ahakoa ko wai, ahakoa nō hea. Tahanga ana ko tātau ngā mōrehu ki muri, ko tā tātau mahi he auē, he tangi, he poroporoaki. Tēnei rā te tangi ake ki ngā mate nui, ki ngā mate maha i tākotokoto ai ki runga i ngā marae kāinga maha huri noa i te rohe whānui o Ngāti Kahungunu, mai i runga ki raro. Kāore he whānau kotahi i kore nei te pāngia e te mate i tēnei tau nei, nā reira, ka whānui te kōrero mō ō tātau mate, tukuna rātau kia moe i ngā ringaringa atawhai o tō tātau tipuna, o Hine-nui-te-pō. Kāti rā te wāhi ki te hunga kua moe, ka auraki mai ki te hunga ora, kia ora mai rā tātau katoa.

Kātahi te tau ko tēnei kua taha ake nei. Piki mai, heke atu, wero mai, wero atu, tutuki tonu ana ngā mahi. Ka nui te whakapōreareatia o ngā mahi e te āhuetanga ki te mate urutā nāna nei e raruraru nei te ao huri noa, huri noa. He take nui tērā i kore ai e tutuki ngā mahi i tūmanakotia ai. Ko ētahi i kore nei e tū, ko ētahi i panonitia nā runga i te āhuetanga ki te mate urutā. I tū tonu rā Te Kura Reo o Ngāti Kahungunu ahakoa ngā whakamātautau o te wā. Ko Te Reo ki Tua i whakatārewatia nei nā ngā raru nui o te wā.

Arā noa atu ngā hua kua puta nei i ngā mahi i te taha ki te mātauranga. Kua riro mai i Te Kaporeihana ā-Iwi o Ngāti Kahungunu te kaupapa o Te Ahu o Te Reo Māori, ā, ko Kauwaka Ltd. kai te whakahaere i tēnā kaupapa. I riro mai hoki ētahi pūtea hai āwhina i ngā Taiwhenua katoa. Ko tā te kaupapa nei he whakahonohono anō i ā tātau rangatahi ki roto i ngā kaupapa mātauranga. I mahi tahi hoki ki Te Tari Arotake ki te whakahaere kaupapa ki roto i ngā kura auraki e rima nei. Ko tā te kaupapa nei he kimi i te ara e tautoko ai i ngā kura auraki mā tētahi kaupapa Māori, Kahungunu nei hoki hai arotake i ngā mahi a ngā kura.

I mahi tahi hoki mātau ki Te Amorangi Mātauranga Matua mā te raihana raraunga ki te tautoko i ngā honohononga ki ngā whare ako pakeke, me ngā whānau e kimi nei i te mātauranga ā-iwi, ā-hapū, ā-pāpori, ā-whakatipu ōhanga anō hoki. E haere tonu nei tā mātau mahi whakahoahoa mā roto mai i te rautaki mātauranga a Ngāti Kahungunu kātahi anō ka whakahoutia. E kaha nei te tautoko mai a te rōpū Tumuaki o Ngā Kura Tuatahi o Te Matau a Māui, tae noa ki ngā Kāhui Ako, ā, me te rōpū Tumuaki o Ngā Kura Tuarua o Te Matau a Māui. Kai te tipu tonu hoki te whānaungatanga ki ngā rōpū pēnei i te New Zealand School Trustees Association, Te Aho o Te Kura Pounamu, me te EIT School of Education and Social Humanities.

Jeremy Tātere MacLeod

Pouarataki – Director, Te Reo, Tikanga me Mātauranga

Te Taiao Me Ōna Rawa

Progressing the rangatiratanga of Ngāti Kahungunu in regards to freshwater alongside Ngāi Tahu through the high court is the biggest development and challenge ahead for the iwi. We will be telling the High Court how to meaningfully give effect to our rights and responsibilities. Bringing together all our organisations and evidence within Ngāti Kahungunu will be part of that challenge. This is a crucial step towards occupying the space of rangatiratanga, and promoting our culture in natural resource management rather than being continually reactionary to various law changes, policy and planning proposals.

We do however have to 'maintain the line' in these processes and have submitted on the Water Services Bill (aka 3 waters) and the Natural and Built Environments Act, with our submissions accessible online. We've also maintained the fight to protect our pristine aquifers and drinking water to ensure wai maori status; while proposals from crown agencies and Councils seek to promote treatment. We've continued in our support to put water first, in other words the first priority is our waters, our rivers and lakes – we seek movement beyond nice words. Engaging in these processes with regulatory authorities to progress Ngāti Kahungunu Taiao and Wai objectives is hard work, though we are much wiser from these experiences, and have built positive relationships in some quarters and scorn from others.

One of the most pleasing outcomes of 2020 was the ability to provide more support and assistance to those Taiao kaimahi associated with our Taiwhenua, and strengthening Ngāti Kahungunu advocacy. Bearing in mind that the capacity of Taiwhenua and circumstances are not equal, the NKII Taiao unit are particularly active where invited and working relationships are possible. We're also happy to kōrero or share draft submissions on proposals across the Ngāti Kahungunu whānau whanui – for example the Water Services Bill, and support of Wairoa Taiwhenua and Taiao kaitiaki to improve the treatment of Wairoa Wastewater and remove the discharge from the awa.

Hearings on the combined catchment proposal to protect Heretaunga and Ahuriri waterways (TANK) finally occurred after years of seemingly pointless engagement. We have been upfront about this saga and the shortfalls in the Hawke's Bay Regional Council (HBRC) attempts to ignore tangata whenua in favour of status quo land use, irrigation and continual degradation and disappearance of our waterways. Councils proposal received more opposition from tangata whenua via submissions than ever before; issues and desecrations of tangata whenua rights, responsibilities and cultural values could not have been more comprehensive and clear. Ngāti Kahungunu evidence at Mangaroa Marae included – Barrister – Rob Enright. Scientist- Shade Smith Economist Peter Fraser, Planner – Grey Wilson and myself and is all publically available.

This year's annual Kahungunu Fish Hook Summit showcased some of the research projects we have been involved in or supporting:

- Commercial fishing - Sustainable commercial fishing technology with Rick Burch and Karl Warr, aboard the F.V. Nancy Glen and F.V. Chips, respectively. Although two different projects they both focus on better selectivity of target and non-target species. We are also supporting a proposal to reduce bottom trawling impacts. In summer we will be seeking volunteers and potential workers to be part of some of the research.
- Climate change - effects of sea level rise on inanga spawning sites. Supervising PhD candidate Waikato University – Leana Barriball, Māori Advisor – Parliamentary Commissioner for the Environment.

Te Taiao Me Ōna Rawa

- Hawke's Bay Marine and Coast group (HBMaC) - a HBRC facilitated research group that we are members of, with the current focus on ecosystem based management, and using a system mapping approach, for sustainable management in the coastal marine environment – sustainable seas project.
- Tangaroa Tohu Mana, Tangaroa Tohu Mauri (Marine Cultural Health Programme – Ahuriri hapū, Napier Port). Provided advice and support for programme development to assess the health and wellbeing of the coastal and estuarine waters of Ahuriri hapū.
- Te Whakaheke o Te Wai (GNS, Heretaunga Taiwhenua et al.) - understanding the age and pathways above and below ground of our waters; groundwater modelling, with incorporation of mātauranga Māori and our values.
- Braided Rivers (Lincoln Agritech, et al.) – better understanding of the aquifer recharge and braided aquifer plains.

There are a number of other projects that we are involved with whānau, hapū, Taiwhenua and research institutes; developing submissions for significant resource consents, catchment plans, policy statements, fisheries quota reviews, ACE carry overs and minimum legal size reviews. Our team looks forward to continuing to work alongside Taiao kaimahi as capacity grows, while offering our experience and expertise and vice versa.

Ngaio Tiuka

Pouarataki – Director,
Te Taiao me ōna Rawa



Taiao Unit supporting mana whenua at Wairoa Wastewater Hearings.



Environment Warriors Morry Black, Marei Apatu and Ngaio Tiuka.

Te Ara Toiora

Te hau oranga taha tinana, rukutia, kia ū, kia mau!

Te hau oranga taha hinengaro, rukutia, kia ū, kia mau!

Te hau oranga taha wairua, rukutia, kia ū, kia mau!

Te hau oranga o Ngāti Kahungunu, rukutia, kia ū, kia mau, kia puta ki te ao mārama!

Ngāti Kahungunu Iwi Te Ara Toiora's goal of "Strong, Healthy Vibrant whānau" is one of the Seven pou captured in the Kahungunu 2026 Strategic plan, however the work of the Te Ara Toiora Team contributes to or enables outcomes sought right across the seven pou.

Capability and resourcing of our Te Ara Toiora team is facilitated through our strategic relationships with our Crown partners. This enables the Iwi to utilize and direct the additional capability and resource offered to further advance the aspirations captured in Kahungunu 2026 recognizing that these also align to the outcomes sought by the Crown. By utilizing our relationships with our Crown partners, our valued community partners and our champions within; we also uphold our guiding principles.

This year has been an extremely busy one with many of our strategic relationships coming to fruition through the implementation of joint initiatives under Te Ara Toiora with our Crown Partners i.e. Ara Poutama Aotearoa (including the High Impact Innovation Team which is cross Justice Sector funded), Oranga Tamariki, Te Puni Kōkiri, NZ Police, Ministry of Social Development, and Te Tumuwhakahaere o Te Wero Community Partners (A.K.A Te Wero) i.e. Te Whare Maire o Tapuwae, Te Roopu ā-Iwi Trust, Te Kupenga Ahuriri Hauora, Ikaroa Rangatāhi Social Services, Te Taiwhenua o Heretaunga and Choices Whare Oranga Ake. Ngāti Kahungunu Iwi worked with our partners to design and inform the delivery of these initiatives.

While the majority of these initiatives are being delivered within the wider Hawke's Bay, they provide a leverage and advocacy point for these to be rolled out across the Kahungunu's rohe informed and directed by ngā Taiwhenua o Ngāti Kahungunu own aspirations. Alongside of this, Ngāti Kahungunu Iwi entered into a different space by becoming a commissioner of services for the Kaiarataki Service under Paiheretia te Muka Tangata and see this as the first of many opportunities that will unfold in the coming 18 months for Ngāti Kahungunu Iwi and ngā Taiwhenua o Kahungunu to take on this leadership role.

Ngāti Kahungunu Iwi Inc's Kawenata with Ara Poutama Aotearoa (Whakaritenga Pāhekoheko), our input into the Hokai Rangi strategy and HB Pathways, have resulted in a number of initiatives working in tandem with each other that weave the beginning of a whāriki of support services for both those of our whānau (Paihere) within the Hawkes Bay Regional Prison and their whānau and support networks. The work with Ara Poutama Aotearoa is quite extensive and has a level of maturity and complexity as we have been working on this since the signing of the Kawenata in 2018. These initiatives include those funded or enabled by other Crown agencies. While the whāriki is not yet complete we have begun the journey. A precis of some of these are below.

Tēnei Au, Tēnei Au (Trauma Informed Practice / Tikanga Māori / Kaupapa Māori Approaches) funded by Ara Poutama Aotearoa, was designed in partnership with our Te Pūkenga o Ngāti Kahungunu of experts, once implemented will provide kaupapa tikanga based Māori approaches anchored through trauma informed practice and delivery.

The Kaiarataki service in partnership with our Te Wero partners will provide navigational support services for whānau of Paihere from HB Regional Prison prior and post release aimed at improving their circumstances and wellbeing and thereby also improving the possibility of positive reintegration. This is underpinned by the whānau ora principles and Kahungunūtanga. This has been a major undertaking for Ngāti Kahungunu Iwi as the commissioner of these services in partnership with Te Puni Kōkiri who are the lead for this service.

The Wellbeing Continuity upon release initiative is one of two initiatives funded by the High Impact Innovation team The Wellbeing Continuity initiative enables those due to be released from HB Regional Prison to resume their previous benefit entitlement conditions (if they were in receipt of sickness or invalid benefits) or apply for and be granted benefit prior to their release (including bank accounts, identification etc). This initiative

Te Ara Toiora

which has been implemented in 3 correctional facilities across Aotearoa in partnership with the Ministry of Social Development has already provided support to enable whānau to reintegrate successfully with their whānau whānui and wider community.

The other is the Virtual Reality (VR) Literacy and Numeracy pilot being delivered within the community in partnership with the High Impact innovation team, Animated Research Limited (ARL), Methodist Mission Southern from Dunedin and Learning Innovations Limited in Hawkes Bay who are the provider. This initiative utilizes the VR medium to improve engagement and learning of the enrolled students who are referred by Community Probation and the Ministry of Social Development. ARL and Methodist Mission Southern have developed the VR programmes and technology and delivered this within the Otago Prison with marked success. The educational outcomes across the pilot has exceeded our initial expectations. Literacy and Numeracy outcomes for learners were strong, with 18 of 22 learners who sat two subsequent assessments showed improvements in their literacy and/or numeracy scores. 9 participants achieved their 'Future Directions' certificate and a further 11 participants made progress towards one or both unit standards. This is a great outcome and we are looking for funding with our partners to continue

Over the last year we have been working in partnership with the HB Area of NZ Police to establish Te Kura Family Harm intervention service. Te Kura provides an overarching coordination framework that integrates and advocates for appropriate responses to incidences of family harm. The development of Te Kura has been informed through many consultation hui across Hawkes Bay and the learnings from the review of the Whāngaia Pāharakeke initiatives across the country. The primary lessons we took from the other sites include the importance of integrating tribal knowledge within the programme; and, how people favoured the flexibility of the programme because it could be tailored to support local priorities and systems. Te Kura was given this name by our Chair who references the oriori Pinepine te Kura. The traditional values that this oriori represents is the foundation of our concept. Te Kura is expected to be operational in September of this year.

In March of this year, Ngāti Kahungunu Iwi signed a Strategic Partnership Agreement (SPA) with Oranga Tamariki. This document reaffirms our resolve to influence system, policy and process change and lead the development of initiatives with our Crown and Community partners that uphold the fabric of whakapapa, whānau and whānaungatanga. The attempted uplift of a Kahungunu mokopuna in May 2019, highlighted the need for the Iwi to remain constant in its advocacy for change. The SPA also leverages off the whānau voice captured through Kōrero Mai whānau, the learnings and the initiatives/services we have led and co-designed in partnership with our Te Wero partners and Oranga Tamariki since 2019. Kōrero Mai Whānau which was led by Dr Aria Graham was initiated soon after the attempted uplift to provide an opportunity for whānau to share their story regarding their various experiences with Oranga Tamariki. The report that resulted was raw and unfiltered, and captured the whānau voice, the trauma and the mamae caused and is a founding document and reference point for Ngāti Kahungunu Iwi Inc's SPA. Kōrero Mai whānau also anchors the continuation of the Case Resolution initiative. This enables the Iwi through the work of our experienced kaimahi to advocate for and on behalf of whānau, uphold the agreements made and seek resolution.

Pou Amo which is the Iwi led Family Group Conference model is another service developed prior to the signing of the SPA. The design of Pou Amo was informed from the experiences of Te Wero Social service providers, Oranga Tamariki Kaimahi, and most importantly whānau. Pou Amo focuses on the whānau hui, whānau planning stage of the process to enable and empower whānau whānui to take a lead role in the decision making for their mokopuna. The aim of Pou Amo is to where possible retain the Kaitiaki of the mokopuna within whānau whānui and provide the appropriate supports to enable that to occur. We have also advanced our conversations and planning regarding early and intensive intervention, repatriation of our mokopuna (Whakahokia te Tamaiti) and Whānau care.

Consultation and implementation of the Health reforms over the next 12 months will see a significant shift for delivery of health services to Māori. Ngāti Kahungunu Iwi Inc have a Memorandum of Understanding

Te Ara Toiora

(MoU) with HBDHB and were in the process of finalising an MoU with Health HB PHO, both with the aim of achieving equity of quality health delivery for whānau. The Māori Relationship Board (MRB) which sits within the HBDHB MoU has, since its establishment been instrumental, providing advice and advocating on what matters and what works best for whānau. Individually and collectively MRB members have been national trendsetters and leaders in health aspects such as ethnic data collection, workforce development, delivery of services to Māori and DHB Māori representation. With the advent of the reforms both MoU's and MRB will be succeeded with the Iwi Māori Partnership Boards (IMPB) bringing together the Settlement Entities and Iwi within the Takitimu waka together. These are exciting times and bring Māori closer to enabling equity and mana motuhake within Hauora.

Over the coming 12 months we will move with intentionality to advocate for and establish services and interventions across the sectors that are whānau centred, whānau led and honour the whānau voice that support the restoration of whānau wellbeing and independence. Some of these are apparent or at the early stages of discussion and include Bail support, alternative remand options and custodial support working across the Justice Sector, Gateway/Triage intervention and Kahungunu Accreditation and Approvals process within the social sector.

Chrissie Hape

Kaiwhakahere Matua

Te Ara Toiora Team



Iwi leaders, Māori Providers and Government Agencies, building partnerships to strengthen healthy whānau.

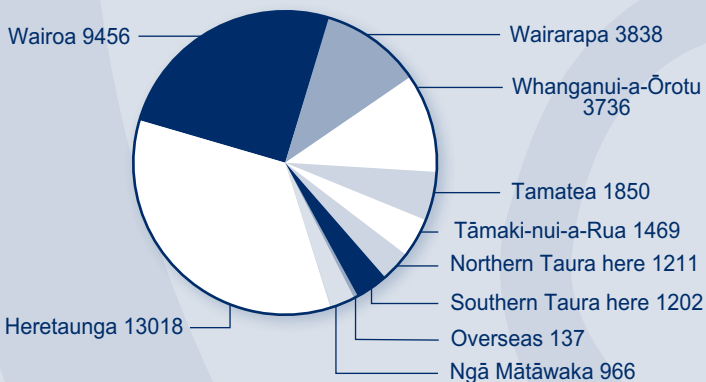
Benefits to Members

Ngāti Kahungunu Iwi Incorporated takes pride in being able to support our iwi members in their cultural, sporting and educational endeavours. Amid the uncertain circumstances, we were able to support individuals, groups and families to participate in activities and events that strengthen home and family, build Kahungunu pride and create positive memories. The following pages provide a summary report on our registration database and steps taken to increase our membership; a summary report on the exciting communication platforms that have been introduced through COVID learnings; provide a summary of events held throughout the year; and lastly list our sponsorship and scholarship recipients.

REGISTRATIONS

As at 30 June 2021, the Ngāti Kahungunu Registration Database increased by 1795 members taking our overall total to 36,883 members. 70% of these new registrations came from Heretaunga and Wairoa Taiwhenua. We continue to have a high number of incorrect addresses for whānau who frequently move without updating their information. In 2018 our migration from a Microsoft Access database to a Structured Query Language (SQL) database allowed for us to improve our system to allow Taiwhenua administrators to update information. This mahi rolled out over the past year and is a work in progress. Eventually we are planning for individual access of personal data so individuals can update their information. The roll out of the iwi membership card in 2019 was part of a bigger plan to allow for this progression and we are tracking with our 5 year plan.

Graph to show our registered membership statistics



COMMUNICATIONS

During COVID-19 we learned a lot about how to best communicate with our people, and we became a communication hub for all communities. This help opened up to the community, not just registered iwi members, all people – all communities. We saw our Taiwhenua hubs grow their own communications and networks with marae, hapū and individuals like a grapevine sharing the latest bargain sale news. It was great. There was an overlap however of databases, networks, who's who, and a somewhat mix up on radio waves with no coordination at times because at the time it was better that no one fell through the gaps. Therefore the support was varied with some receiving more help than others. What we learned throughout the whole ordeal as an iwi organisation is that in a world pandemic we help all, not just registered members. It's the Māori way.

Communications for our people must come from the local Taiwhenua who know their people and their own local plans. It actually became territorial.

Benefits to Members

All Taiwhenua are different. Our role as Ngāti Kahungunu Iwi Incorporated communications must remain high level, positive, uplifting, inspiring and honest. The platforms we use continue to inform our membership and the public. These are Pānui ki te iwi - an email network, Ngāti Kahungunu Iwi Incorporated Facebook page, www.kahungunu.iwi.nz website, the Tihei Kahungunu news, Pā Mai To Reo, Chairmans Updates, and access to archived and current information and media releases. You must connect if you want to be informed. Keeping our people informed is important but whānau have a responsibility to stay connected. This year during the COVID-19 Delta outbreak our communications changed slightly giving whānau more of a responsibility to keep informed with Government updates rather than re-feeding the information. If you want to be kept informed, please contact our iwi office to link into any or all of our communication platforms noted in this report.

EVENTS

Ngāti Kahungunu Iwi Inc strives to produce and sponsor events that strengthens hauoratanga, whānautanga and Kahungunutanga.

Waiata Māori Music Awards October 2020, Toitoti Hawke's Bay Arts & Events Centre, Hastings

Founded by Tama Huata in 2006 this national event honours the outstanding achievements of traditional and contemporary music artists and their compositions.

Due to COVID 19 the 13th annual awards were presented on-line by TV personality Luke Bird and radio host Krystal Edwards with the stunning Toitoti Centre a backdrop for the broadcast. Aotearoa's favourite supergroup L.A.B. won four awards and juggernaut Six60 took out Radio Airplay Song Of the Year with The Greatest. Other winners included Troy Kingi, Taite Kupa, Rei, Ria Hal, La Coco and Mohau.

Kahungunu AGM Pā Sports Day November 2020, Splash Planet, Hastings

In November hundreds of players representing their marae competed in netball, volleyball, kiwi sports, Kī-o-rahi, tug of war and euchre. Whānau filled buses came from Wellington, Masterton, Dannevirke and Wairoa.

The 45 minute outdoor AGM meeting was streamed live to iwi members in Aotearoa and Australia. Takitimu Seafoods hosted a fish and chips lunch for 1100 delighted members and thousands enjoyed a cone ice cream on their way out.

Iron Māori December 2020, Ahuriri, Napier

Due to covid uncertainty the annual Rangatahi and Kaumātua events were cancelled. The IronMāori Quarter and IronMāori Half were combined into one event with the first of 1100 competitors entering the swim at 6am on a triangular course on the Ahuriri foreshore.

The stunning bike course swept past the port to Cape Kidnappers and the run comprised 3 and 6 laps along the picturesque West Quay to the finish line at Harbourview Lodge.

Ngāti Kahungunu Iwi is the foundation sponsor. An exciting new event is planned for December 2022. Big thanks to the founders Heather & Wayne Skipworth, their volunteer crew and competitors for their commitment to this kaupapa.

Waitangi Day Family Celebrations February 2021, Hawke's Bay Sports Park, Hastings

Screaming and laughing riders on Mahon's Round-Up thrill ride provided a gravitational buzz for hundreds of excited youngsters. Thousands turned out under sunny skies for our national day celebrations to enjoy kai, free rides and entertainment. The highlight of the day was popular iconic kiwi band Ardijah. Netball, touch, 3 v 3 basketball and Ki Orahi in the morning kicked off celebrations.

Benefits to Members

Whakanuia Matariki June 2021, Kahungunu wide

This year saw the biggest turnout ever for Matariki celebrations due partly to the high interest generated from the government's announcement on 4 February this year that Matariki will become a public holiday starting Friday 25 June 2022.

Tirama Matariki Light Glow, a new event mounted on Maumahara Island, Masterton attracted a whopping 9,000 visitors on Queen's Birthday weekend. A record 2500+ rode the miniature railway dark ride. Funded by a generous grant from Trust House.

"Amazing. Simply the best. Thanks to those that did all the hard work". Peggy Juggins.

Tamaki nui a Rua Matariki event in Dannevirke attracted 5,000+ and the happy crowds loved the kina shucking competition, kiddies dance off and the spectacular fireworks. A huge covered stage used for events like Ōne Love added the wow factor to the celebrations. A maumahara to remember loved ones lost over the past year was shared to an emotional and appreciative audience.

"Love the vibe. Kina comp the best. Greatest night yet. Mauri ora." Aio Romiromi

Wairoa Matariki 2021 organisers Sara Bird and Esta Wainohu rolled out a full week of activities including a Māori Games Tournament for 5 local schools and a packed whānau concert at the Wairoa Community Centre.

"Thanks Esta. It was an awesome day. You did an amazing job. Superstar!." Kirby Tana

Tamatea Whakanuia drew the biggest crowd for years in Waipukurau with attendance over 3500. Huge thanks to Te Rangimarie Ngarotata and her team who organised an art exhibition, theatre concert, Ki Orahi tournament and finale concert on a huge outdoor stage with a maumahara, kai and fireworks.

"What an amazing night! Thank you to Ngāti Kahungunu Iwi. It's our pleasure to have our Central Hawke's Bay District Council and Tamatea Taiwhenua working with you to help make Matariki magic! Alex Walker – Mayor CHB District Council.

Heretaunga Whakanuia saw record crowds come out to eat delicious kai, enjoy entertainment and watch a spectacular fireworks finale. A full stage backdrop lined by neon Matariki images on 9 truss towers provided a striking setting for the region's biggest annual winter gathering at the Flaxmere Village Green. A big thanks to Trust House who funded the stage, sound, outdoor screen and generator.

"Kahungunu has some absolutely awesome events. Proud to be NKI." Fleur Wainohu.

Our Events Commitment

To provide benefits to our members one by one, family by family in their thousands.

By Kahungunu, For Kahungunu, For Everyone, Forever!

Te Rangi Huata

Events and Promotions Manager

Benefits to Members

General Sponsorship

Recipient Name	Event of Activity	Value
Manea Robin	National Māori Basketball Tournament 2021	\$100.00
Audrey Anna Mia Robin	National Māori Basketball Tournament 2021	\$100.00
Nadia de Thierry	National Flag Football Tournament	\$100.00
Khyrus-Marie Taea-Gurnick	National Flag Football Tournament	\$100.00
Anya-Paige Dianne Carlson	National Flag Football Tournament	\$100.00
Pearl Boladuadua	National Māori Basketball Tournament 2021	\$100.00
Estienne Boladuadua	National Māori Basketball Tournament 2021	\$100.00
Dayton-Peter Boladuadua	National Māori Basketball Tournament 2021	\$100.00
Byron Taufao	National Māori Basketball Tournament 2021	\$100.00
London Sciascia-Taufao	National Māori Basketball Tournament 2021	\$100.00
Hunter Sciascia-Taufao	National Māori Basketball Tournament 2021	\$100.00
Te Uira Sciascia-Taufao	National Māori Basketball Tournament 2021	\$100.00
Theresa Atareta Sciascia	National Māori Basketball Tournament 2021	\$100.00
Darren Paewai	National Māori Basketball Tournament 2021	\$100.00
Corban Paewai	National Māori Basketball Tournament 2021	\$100.00
Pharus Paewai	National Māori Basketball Tournament 2021	\$100.00
Maia Paewai	National Māori Basketball Tournament 2021	\$100.00
Tiffany Paewai	National Māori Basketball Tournament 2021	\$100.00
Ammaron Edwards	National Māori Basketball Tournament 2021	\$100.00
Cheyenne Edwards	National Māori Basketball Tournament 2021	\$100.00
Aubrey Edwards	National Māori Basketball Tournament 2021	\$100.00
Alana Paewai	National Māori Basketball Tournament 2021	\$100.00
Keela Clare North	National Flag Football Tournament	\$100.00
Rakeipoho Bennett-Hekenui	National Māori Basketball Tournament 2021	\$100.00
Delma Raihania-Kulimoeanga	National Flag Football Tournament	\$100.00
Waipuka Jessup-Tahau	National Flag Football Tournament	\$100.00
Nikita Herlihy	2021 Bunnings National Touch Championship	\$100.00
Karybe Te Kira	National Māori Basketball Tournament 2021	\$100.00
Raegan Robinson-Bartlett	2021 Bunnings National Touch Championship	\$100.00
Haizley Bartlett	National U13 Basketball Championship	\$125.00
Vienna Waerea-Tamai	NZ Tennis Teams Event U12s	\$200.00
Sara M Christiansen	67th Feilding Marathon	\$250.00
Zaniqua Pratt-Smith	Division 2 Swimming Championships 2021	\$250.00
Stirling Clarke-Lloyd	National U15 Basketball Championship	\$250.00
Violette Emma Rose Perry	FINA World Youth Championship	\$250.00
Amiri Downs-Williams	NZ Junior Touch Tournament	\$350.00
Rhythm Butler-Brown	NZTFI Junior Oceania Cup 2021	\$460.00
Keira Weepu	NZTFI Junior Oceania Cup 2021	\$500.00
Maungaraki Junior & Youth Darts	National Junior & Youth Dart Championship	\$500.00
Pane Haraki	King in the Ring	\$500.00

Benefits to Members

Recipient Name	Event of Activity	Value
Ngāti Kahungunu ki Heretaunga U15 Tama basketball team	National Māori Basketball Tournament 2021	\$800.00
HB Panthers U14 Girls	National Flag Football Tournament	\$900.00
Rakai Paaka Team	National Māori Basketball Tournament 2021	\$900.00
Ngāti Kahungunu ki Ahuriri U17	National Māori Basketball Tournament 2021	\$900.00
Ngāti Kahungunu ki Heretaunga Open Mixed basketball team	National Māori Basketball Tournament 2021	\$1,100.00
Leon Harmer	National Ki O Rahi Championship	\$1,200.00
HB Māori U14 Girls Kereru	NZTFI Junior Oceania Cup 2021	\$1,500.00
Aotearoa Māori U12 Boys Rimu	NZTFI Junior Oceania Cup 2021	\$1,500.00

Community Sponsorship

Community Event	Value
Flaxmere Planning Committee - Flaxmere Night Market New World Trolley Dash	\$ 400.00
Ceasar MMA - Mixed Martial Arts Facility Opening	\$1,000.00
Waiohiki Marae - Opening of Waiohiki Marae	\$4,000.00
Horizons Basketball Trust - Attend the Horizon Academy games & Hastings 3 x 3	\$1,500.00
Wairoa Community Centre - Sponsorship for Waitangi Day 2021 in Wairoa	\$1,500.00
Hastings Boys High School - Community Kapa Haka	\$1,700.00
Flo Karaitana - Celebration Lunch (Kaumātua)	\$2,000.00
Te Matau a Māui Voyaging Trust - Te Matau Waka Hourua Crew Recruitment Wananga	\$2,150.00
Wairoa Taiwhenua - Morehu Ratana Event	\$2,500.00
Te Whanganui A Orotu Taiwhenua - Sponsorship for AGM Wristbands (Flood Relief)	\$2,500.00
Kura Reo (NKII) - Sponsorship for Kura Reo 2020	\$3,250.00
Raiha Huata - Kapa Haka Festivals	\$4,000.00
Orokohanga Music Trust - Music Tuition for under-privileged kids	\$5,000.00
Waipatu Māori Catholic Club - Te Kura Kaupapa Māori o Ngāti Kahungunu ki Heretaunga	\$5,000.00
Tangihanga support - Rose Pere	\$6,600.00
TTOH Matariki Living Taonga Awards	\$8,280.00
Iron Māori - Iron Māori December 2020	\$10,000.00
Waiata Māori Music Awards - Corporate Member Sponsorship 2020	\$10,000.00
Te Kupenga Hauora - For Kaumātua to attend the movie 'Cousins'	\$500.00
Te Whanganui A Orotu Taiwhenua - For Kaumātua to attend the movie 'Cousins'	\$500.00
Heretaunga Taiwhenua - For Kaumātua to attend the movie 'Cousins'	\$500.00
Wairoa Taiwhenua - For Kaumātua to attend the movie 'Cousins'	\$500.00
Tamatea Taiwhenua - For Kaumātua to attend the movie 'Cousins'	\$500.00
Tamaki-nui-a-Rua Taiwhenua - For Kaumātua to attend the movie 'Cousins'	\$500.00
Kahungunu ki Wairarapa - For Kaumātua to attend the movie 'Cousins'	\$500.00

Benefits to Members

SCHOLARSHIP GRANTS

Ngāti Kahungunu Iwi Incorporated is pleased to support its iwi members who are seeking a higher education and forging through regardless of the stress and pressure that COVID-19 brought. This year the organisation supported 99 students with a general scholarship worth \$500 each, and three postgraduate students with a scholarship worth \$5,000 each. Our partnership with Victoria University enabled us to match funds for 11 Kahungunu taura studying at Victoria University which gave the iwi the opportunity to support more Kahungunu students.

General Scholarship Recipients

Recipient Name	Taiwhenua/Rohe	Degree
Adam Traia McDonald	Heretaunga	Masters of Public Health
Adam Hone Bartlett	Heretaunga	Bachelor of Design - Product
Amy Ramari Marino	Wairoa	Bachelor of Social Work
Anna-Belle Margaret Graham	Wairoa	Masters of Professional Creative Practice (Honours)
Arnia Erina Tamihana-Simich	Heretaunga	Masters of Applied Practice
Ashley Rawiri	Wairoa	Bachelor of Arts - Majoring in Te Reo Māori & Screen/ Media Studies
Billie Jay Ropitini Gell	Wairoa	Bachelor of Medicine and Bachelor of Surgery
Brock Te Huki Sciascia	Tamaki Makaurau	Bachelor of Law and Bachelor of Commerce
Caitlin Webber-Taufale	Wairoa	Diploma in Civil Engineering
Carly Aroha Gauthern	Wairarapa	Bachelor of Bicultural Social Work
Chad Doole	Heretaunga	Graduate Diploma in Teaching - Primary
Chevelle Atareta	Tamatea	Masters of Science
Chimhea Ripeka Greening	Heretaunga	Postgraduate Diploma in Māori and Management
Corrigan Millar	Wairoa	Bachelor of Science - Majoring in Land Planning and Development
Courtney McGregor	Wairoa	Postgraduate Diploma in Health Science Bioscience
Ema Marie Taungakore	Te Whanganui a Orotu	Bachelor of Nursing
Emma Jane Maxwell	Te Waipounamu	Bachelor of Land and Property Management, majoring in Event Management
Gaylene Aroha Hinmona	Wairarapa	Bachelor of Law
Gina Cherie Waters (nee Puki)	Tamaki Makaurau	Bachelor of Science (Honours) - Majoring in Psychology
Helaman Maaka Luki	Heretaunga	Bachelor of Medicine and Bachelor of Surgery
Hemi Witere Wimaihi Kirihoa Takimoana	Wairarapa	Postgraduate Bachelor of Arts - Māori
Hinemooana Tehau Markham-Nicklin	Wairoa	Bachelor of Law and Bachelor of Commerce
Jacinta Marie Rangi	Wairoa	Postgraduate Diploma in Health Science - Extended Care Paramedic
Jade Marie Lee-Walker	Wairarapa	Bachelor of Law and Bachelor of Arts
James Barclay	Heretaunga	Bachelor of Law and Bachelor of Commerce
Jamie Oliver Cornes	Heretaunga	Bachelor of Medicine and Bachelor of Surgery
Jazz Puriri	Heretaunga	Bachelor of Science - Majoring in Ecology, Biodiversity & Environmental Science

Benefits to Members

Recipient Name	Taiwhenua/Rohe	Degree
Jessica Mary Alison Lyford	Tamaki Makaurau	Bachelor of Health Sciences - Podiatry
Jessica Toa Wiperi	Heretaunga	Graduate Diploma in Arts - Māori
Jessie Elesha Parr	Wairoa	Bachelor of Medicine and Bachelor of Surgery
Jody Moana Hamilton	Wairoa	Te Pūkairua Reo Māori Diploma
Joshua Paora Brown	Wairoa	Masters of Business Administration
Joshua Ricky-Lee Solomon	Wairoa	Bachelor of Medicine and Bachelor of Surgery
Julia Ann Maxwell	Te Waipounamu	Bachelor of Commerce
Kahukura Ritchie	Wairarapa	Bachelor of Youth Development
Kara Te Iwi Huata Huata	Heretaunga	Poutahu Whakaakoranga
Karroll Jade Pere-Veale	Tamaki-nui-a-Rua	Postgraduate Diploma in Bicultural Professional Supervision
Kereana Rose Russell	Heretaunga	Bachelor of Medicine and Bachelor of Surgery
Kerrin Ellison Te Nahu Mato	Tamatea	Masters of Indigenous Studies
Kiri Lee Hunter	Heretaunga	Doctor of Philosophy - Health
Kumeroa Samuels	Te Whanganui a Orotu	Masters of Māori Education - Tāhuhu Whakaakoanga
Laura Payton Gemmell	Heretaunga	Bachelor of Health Sciences
Leanne Erina Hinetaurira Karauna (Te Whaiti)	Wairarapa	Masters of Māori and Indigenous Leadership
Leilani B Blundell	Wairarapa	Bachelor of Bicultural Social Work
Leilani Wong	Heretaunga	Bachelor of Science - Psychology, Bachelor of Social Work and Bachelor of Arts - Graphic Design
Lorraine Leslie Cooper	Wairoa	Bachelor of Social Work
Lynette Waimaria Paenga	Heretaunga	Masters of Education - Māori Medium
Maraea Parearohe Hopa-Cribb	Heretaunga	Bachelor of Education
Mariea Kauere Hopaea Henderson	Heretaunga	Bachelor of Teaching - Primary
Mihiata Rose Louise Hoko	Heretaunga	Bachelor of Nursing
Miriama Kathleen Wilson	Wairoa	Masters of Science - Forensic Science
Mitchell William Kitchin Gordon	Wairoa	Doctor of Medicine
Moana Martine MacDonald	Tamatea	Masters of Management
Morann Kokaua	Heretaunga	Bachelor of Nursing
O'Teash Summer Carson May	Wairoa	Bachelor of Applied Social Work
Phillipa Apirana Tania Moore	Wairoa	Masters of Māori and Indigenous Leadership
Pia Yasmin Kitchin Gordon	Wairoa	Bachelor of Law
Putiputi Te Wake-Munro	Wairoa	Masters of Māori and Indigenous Leadership
Raukurawaihoea Naani Jane Whakaipo Waitai	Wairarapa	Masters of Māori Visual Arts
Rewai Frances Lewis	Wairoa	Bachelor of Education - Primary
Roland Charles Ferris	Heretaunga	Bachelor of Medical Science
Rose Elizabeth Kuru	Tamatea	Bachelor of Science - Majoring in Biotechnology and Cell and Molecular Bioscience
Roxanne Aimee-Lee Waru	Wairoa	Masters of Māori and Indigenous Leadership

Benefits to Members

Recipient Name	Taiwhenua/Rohe	Degree
Ruby Leigh Meads	Wairoa	Bachelor of Arts - Majoring in Criminology
Sa'hayla DeMornay Harden	Wairoa	Masters of Social and Community Work Applied
Samuel David Taylor	Heretaunga	Bachelor of Science - Survey Measurement
Saskia Rose Alexander Paewai	Tamaki-nui-a-Rua	Postgraduate Masters of Veterinary Physiotherapy
Savanna Ruwaioterangi Hiha	Te Whanganui a Orotu	Postgraduate Diploma in Te Tohu Paetahi
Selina Marie Bull	Wairarapa	Bachelor of Nursing
Serene Morrell	Heretaunga	Bachelor of Nursing
Sharn Jakob Waerea	Heretaunga	Bachelor of Physiotherapy
Shiana-Rose Makere Harris	Heretaunga	Bachelor of Commerce
Sophie Briana Couper	Wairoa	Bachelor of Medicine and Bachelor of Surgery
Stacey Hokianga	Heretaunga	Bachelor of Midwifery
Steven Jason Lee Katene	Wairoa	Masters of Professional Practice - Te Tohu Paerua mo te Aka Whakaaroaro
Stewart Darren MacGregor-Shearman	Heretaunga	Graduate Diploma in Digital Marketing
Tahlia Jade Runga	Wairoa	Bachelor of Business
Tangiora Ruawai Maney	Wairoa	Bachelor of Design
Tania Tapine	Te Whanganui a Orotu	Poutahu Whakaakoranga Akorau
Tapekaoterangi Hakopa	Wairarapa	Bachelor of Dental Surgery
Te Aroha Ruth Devon	Wairoa	Bachelor of Health Sciences - Nursing
Te Mauri McLarn Isaac-Sharland	Wairoa	Bachelor of Teaching and Learning Kura Kaupapa Māori
Te Wairakau Morrell-Vercoe	Heretaunga	Bachelor of Nursing
Teilah Noli Wiki Ferguson	Heretaunga	Bachelor of Science
Tessa-Jane Caroline Williams (nee Russell)	Te Upoko o te Ika	Bachelor of Māori Visual Arts
Tiara Catherine Hammond	Wairoa	Bachelor of Environmental Planning
Thomas Riki Hatherly	Te Waipounamu	Bachelor of Physiotherapy
Thompson Hokianga	Tamatea	Masters of Māori and Indigenous Leadership
Wairakei Sa'ena	Heretaunga	Postgraduate Diploma in Teaching and Learning in Māori Medium
Wi Rangiwhaitiri Pakira Parata	Heretaunga	Masters of Architecture
Winnie-Mae Read-Eden	Heretaunga	Bachelor of Medicine and Bachelor of Surgery
Yahaira Nancy Temukisa Williams	Wairoa	Bachelor of Medicine and Bachelor of Surgery

Research Scholarship Recipient

Recipient Name	Taiwhenua/Rohe	Degree
Aneta Katarina Raiha Cram	Wairoa	Doctorate of Health
Heni Te Rere O Kapuni Unwin	Wairoa	Masters of Environmental Science
Myka Nuku	Heretaunga	Doctor of Philosophy in Māori and Indigenous Studies

Kahungunu Asset Holding Company Ltd Chairman's Report



Ko ngā tapu o te rangi
Ko ngā tapu tawhito o te rangi
Ko ngā tapu o te whenua
I takea mai ai ko te mauri

Hunu-ā-rau rehutai, Hunu- ā -rau ahuwhenua
Ngā tukemata whānui o Kahungunu
Tēnei te mihi matangi rau
Tihei Kahungunu

It is my pleasure to provide the report of the Kahungunu Asset Holding Company Limited (the Company) for the year ended 30 June 2021 based on the unaudited financial statements. We thank Crowe who are continuing to work with us to finalise the audit.

Background

The Company was established in 2005 by Ngāti Kahungunu Iwi Incorporated (NKII) to receive and manage the Treaty of Waitangi fisheries settlement on behalf of Ngāti Kahungunu. The Company received quota shares, income shares in Aotearoa Fisheries Ltd and cash.

The Company vision is to “Empower Ngāti Kahungunu Iwi Incorporated through sustainable economic and commercial success” and has a mission to “grow and maximise the assets of Ngāti Kahungunu Iwi Incorporated so the full potential and aspirations of our iwi will be met.”

To achieve the vision and mission of the Company, the following objectives have been set:

- **Kia Mataara:** To ensure the assets of the Company are invested prudently and within the Company's purpose and rules.
- **Whakapakaritanga:** To improve the value of the Company's capital base.
- **Whakamana:** Generate sufficient income to support the needs and aspirations of Ngāti Kahungunu Iwi Incorporated.

20/21 Board Composition

This year we were privileged to have Sir Ian Taylor as part of the board. Sir Ian has since resigned to focus on his digital animation business. The Company wish him well on his ventures, and look forward to seeing his ground breaking digital mahi on the world stage.

The board now consists of four well qualified individuals, who bring their experience and mana to the fore, to guide the Company through these challenging times.

Along with myself, there is Deputy Chair, Heather Te Au-Skipworth a community leader worthy of her ONZM. JB Heperi-Smith, an artist and health professional, who provides a cultural perspective on Company decisions and activities, and Barry Wilson, an entrepreneur and businessman who has been central to landing the settlement for Mana Ahuriri.

The Directors are leaders in their own right, and it is my honour to chair the Company on behalf of the shareholder, Ngāti Kahungunu Iwi Incorporated.

Nature of Business

The business of the Company is to manage the fisheries settlement assets and other commercial assets of Ngāti Kahungunu Iwi Incorporated (NKII) for maximum commercial benefit.

Fisheries Assets

Takitimu Seafoods

Takitimu Seafoods has just finished its second full year trading with a loss of \$6,178,505. The Company continues to financially support Takitimu

Kahungunu Asset Holding Company Ltd

Chairman's Report

Seafoods to ensure the integrity and mana of the brand. The success of Takitimu Seafoods is important to not only the Company and Ngāti Kahungunu Iwi Incorporated, but to the 100+ staff that work there and all iwi members.

While last year the focus was on growing iwi partnerships through ACE (quota) acquisition, this year is about consolidation and focusing on activities where Takitimu Seafoods holds the comparative advantage.

COVID has had a significant impact on the success of Takitimu. Designated an essential service provider, the online platform performed well during lockdown. However, export markets hadn't recovered from 2019, and the wholesale market continues to be volatile.

Also this year, Takitimu Seafoods welcomed a new CEO, Hamish Qusted. Hamish has over 20 years in the fishing industry and has been integral in leading the Takitimu Seafoods team into the future.

Pania Reef Fisheries

The Company is a 50% shareholder in Pania Reef Fisheries. On 5 July 2021 the Directors of Pania Reef Fisheries, with the support of their respective shareholders, made the decision to sell the Glomfjord, the 34m factory freezer trawler owned by Pania Reef Fisheries.

This decision was not taken lightly, as being able to fish the deep sea quota held by Ngāti Kahungunu has been an aspiration of the iwi for some time. However, like many businesses, the Glomfjord was unable to shake the impact of COVID. Specifically, product prices, sea freight costs and fuel costs. In addition to COVID impacts, there have been reductions in Hoki ACE over the last three years, which has a roll-on effect for the availability of other deep sea ACE.

The Company would like to thank the crew and all of those that have supported the Glomfjord to date.

The Company recognised impairments from Pania Reef totalling \$5,521,122 (2020: \$217,859 profit).

Non Fisheries Assets

K3 Kahungunu Property

In September 2020, K3 Development Limited Partnership (K3) was established to support the drive to build more whare across Kahungunu while supporting Māori Trades Apprentices and applying social procurement principles to grow and develop Māori trades businesses.

K3 provides wage subsidies and pastoral support for up to 65 apprentices across all trades, and has started to build houses in Maraenui. Securing a pipeline of house builds is an integral aspect of ensuring success for the three pou of K3. Advanced discussions on land purchases and further developments are currently underway. A small profit for K3 of \$58,523, has been consolidated within the Unaudited financial statements.

Takitimu Transport

Takitimu Transport was established to hold the LTSA licence and to provide transport services to Takitimu Seafoods. Takitimu Transport made a loss of \$205,259

Kahutia

The company holds a shareholding of 47.5% in Kahutia Limited Partnership - a forestry production and carbon trading company established in 2019. The partnership is with Tangoio South Trustees (5% shareholding) and Hineuru Holdings Ltd (47.5% shareholding).

The current year share of the profit after revaluations is \$398,097 (2020: \$6,944 profit).

Kahungunu Asset Holding Company Ltd

Chairman's Report

Tautane Station

The Company owns Tautane Station, a 3,500 ha sheep and beef breeding/semi finishing station situated at Herbertville, 66 km southeast of Dannevirke. This is currently leased to the Glenheath Farming Company Limited. Tautane was valued by Baker Ag as at 30 June 2021 for \$30.3m.

Pandora Road

The company owns two commercial properties on Pandora Road, Ahuriri, currently leased to Takitimu Seafoods. These properties have been recently valued by Logan Stone as \$7.9m collectively.

Financial Performance

Kahungunu Asset Holding Company Limited is a company registered under the Companies Act 1993, and is also a registered charity under the Charities Act 2005.

These unaudited financial statements comprise the Charity and its controlled entities, Takitimu Seafoods Limited Partnership (TSLP), Takitimu Transport Limited (TTL) and K3 Development Limited Partnership (KDLP), together the 'Group', are presented for the year ended 30 June 2021.

The KAHC Group has recorded a before tax profit of \$1,424,458.

Profit for the Period 2019-2021

30-Jun-19	\$2,135,903	KAHC Group Audited
30-Jun-20	\$5,295,148	KAHC Group Audited
30-Jun-21	\$1,424,458	KAHC Group Unaudited

Retained Earnings 2019-2021

30-Jun-19	\$17,088,844	KAHC Group Audited
30-Jun-20	\$19,728,991	KAHC Group Audited
30-Jun-21	\$18,432,077	KAHC Group Unaudited

Equity 2019-2021

30-Jun-19	\$69,214,451	KAHC Group Audited
30-Jun-20	\$71,854,598	KAHC Group Audited
30-Jun-21	\$72,261,829	KAHC Group Unaudited

The Company has reported an increase in equity of \$407,231 for the year ended 30 June 2021.

During the year the Company paid a dividend to NKII of \$2,721,375 (2020: \$2,655,000).

Financial Performance by Asset Class

Shares in Aotearoa Fisheries Ltd

The Company holds 15,748 shares in Aotearoa Fisheries Ltd (AFL), equating to a 6.3% shareholding. The net asset value of the Company's holding in AFL as disclosed in its Annual Report on 30 September 2020 was \$29,990,176 (30/9/19: \$28,540,499)

Shares in Fiordland Lobster Company Ltd

The Company owns 136,670 shares in Fiordland Lobster Company Limited (FLC). These shares represent a 5.87% holding in FLC and have been included in the Company accounts at cost. The net book value of the Company shareholding in FLC as disclosed in its annual report at 31 March 2021 was \$15,822,976 (31/3/19: \$14,616,720).

Kahungunu Asset Holding Company Ltd

Chairman's Report

Quota - ACE sales

Company earnings from the lease of Annual Catch Entitlement (ACE) increased by \$835,591 from the previous year.

ACE Sales

30-Jun-19	\$3,756,811	KAHC Group Audited
30-Jun-20	\$1,780,917	KAHC Group Audited
30-Jun-21	\$2,616,508	KAHC Group Unaudited

Shares in Trident Systems General Partner Limited

The Company owns 3,705 shares in Trident Systems General Partner Limited (Trident). This represents a 1.18% holding in that company. These shares have been included at cost. The net book value of the Company's share as disclosed in its annual report at 30 September 2020 was Nil (30/09/2019: Nil).

Shares in Salco Quota Co Limited Partnership

The Company acquired 100,000 units with Salco Quota Co Limited Partnership in 2014 for the purchase price of \$100,000. An additional 135,135 units were purchased during 2016 for \$250,000. All units have been included at cost.

Constitutional Reporting

During the year to 30 June 2021 there have been no:

- Transactions with settlement quota that have resulted in a registered interest by way of caveat or mortgage being placed over the quota;
- Interest registered against the settlement quota shares;
- Sales or exchanges or acquisitions of AFL income shares.

Summary

While disappointing, the losses within Takitimu Seafoods and Pania Reef Fisheries are not surprising. COVID-19 has disrupted supply chains, increased the cost of freight, lowered demand and reduced profit across the sector – we were grateful that the internet business within Takitimu allowed us to maintain staff numbers of this time. Fortunately, the diversity of the Company's portfolio was able to counter some of that, with steady property and shares investments continuing to grow and the increasing potential of Kahutia and K3.

I offer the attached consolidated statement of the Company's financial performance for your consideration.



Trevor Moeke
Chairman

Kahungunu Asset Holding Company Ltd

Directors

Trevor Moeke

Chair

Ngāti Kahungunu, Ngāti Porou, Ngāti Awa

Trevor has served on the board of Kahungunu Asset Holding Company since July 2013, and was appointed as chair in November 2019. Over his extensive career, Trevor has worked to promote Māori and indigenous development in governance, operation, and policy-making. His leadership experience across the public service, private and Iwi sector includes senior roles in te reo Māori revitalisation, wānanga, education, international indigenous networks, trade, Māori broadcasting, Māori business, Iwi and economic development. Raised and educated locally, he is Wellington based and is Te Poutiaki (Director) Te Ao Māori Strategy and Performance at Te Tai Ōhanga, The Treasury.

Piki te kaha, Piki te Ora, Piki te Wairua!



Heather Te Au – Skipworth

Deputy Chair

Ngāti Kahungunu, Ngai Tahu, Te Arawa, Tuwharetoa

Heather Te Au - Skipworth is an outstanding young Māori leader in Hawke's Bay, passionately connected to her marae, hapū, iwi. Married to Wayne Skipworth, the two are the co-founders of Iron Māori, a health and fitness movement that is changing lives across New Zealand. Heather is currently in her third term on the Hawke's Bay District Health Board and has also served on a variety of community and company boards. Her work has been recognised in receiving a Sir Peter Blake Trust Leadership Award in 2011, and a Queen's Service Medal for services to health and wellbeing in 2014.

Heather is a Director and Deputy Chair of the Kahungunu Asset Holding Company, a subsidiary board of Ngati Kahungunu Iwi Incorporated. Heather is a valued Māori Party leader for Ikaroa Rāwhiti.



John Barry Heperi-Smith

Ngāti Kahungunu

JB Heperi-Smith was raised in a small village Takapau Hawke's Bay. His upbringing was within his marae and hapū community, all of which shaped his character and values. He comes from an education background where the highlight of his career was the Principal for Te Kura Kaupapa Māori o Takapau and a Senior teacher at Te Aute college.

He has served, and has continued to serve, on many marae, hapū and iwi boards, and is the current chair Heretaunga Tamatea Settlement Trust Risk and Audit Board. His valued contribution to the Kahungunu Asset Holding Company is to provide a cultural perspective within an economic development space.

JB's greatest blessing are his tamariki and mokopuna. He is proud of what he has achieved and is committed to helping others to achieve their own dreams and aspirations.



Kahungunu Asset Holding Company Ltd

Directors

Barry Wilson

Ngāti Kahungunu

Barry Wilson hails from Petane and Tangoio Marae in Te Whanganui A Orotu and has a wealth of knowledge and experience as an entrepreneur, business man and owner of Wilson Project and Development Limited. Barry is currently a trustee/director on a number of Trust Boards including Trustee Tangoio South Trust, Director Mana Ahuriri Holdings Limited, Chairman Trustee Ahuriri District Health, Chairman, K3 Property, Director, Kahutia General Partner.



Rawinia Lewis

Business Manager

Ngāti Tukorehe, Ngāti Kahungunu

Rawinia joined Kahungunu Asset Holding Company as Business Manager in November 2019. Rawinia has held senior operational and policy positions across the public sector, in particular health and welfare. Rawinia was seconded to Ngāti Kahungunu Iwi Incorporated in July 2019 to advise on iwi housing and employment matters, and has since been integral in establishing K3 Kahungunu Property, a commercial property company owned by KAHC. Rawinia also provides business advice and support for KAHCs interests and investments in property, farming, fishing and forestry. Rawinia lives in Ahuriri with her husband and two daughters.



Ngāti Kahungunu Iwi Incorporated Summary Financial Statements

FOR THE YEAR ENDED 30TH JUNE 2021

CONSOLIDATION SUMMARY STATEMENT OF MOVEMENTS AND FINANCIAL PERFORMANCE

	Group		Parent	
	2021 (unaudited)	2020 (audited)	2021 (unaudited)	2020 (audited)
INCOME				
Administration and Other Operating Revenue	4,098,073	2,776,616	2,482,139	1,299,640
Hi Ika Revenue	3,900,521	1,604,935	0	0
Dividend Revenue	964,678	1,113,294	2,721,375	2,655,000
Sales	21,868,850	20,284,492	0	0
Revenue from non exchange transactions				
Te Puni Kokiri Māori Business Growth Grant		65,000	0	0
MSD COVID-19 Wage Subsidy		730,723	0	0
Total Revenue	30,832,122	26,575,061	5,203,514	3,954,640
EXPENSES				
Administration and Other Operating	6,712,227	6,317,601	1,193,018	1,013,993
Hi Ika	343,025	326,008	0	0
Hauora	688,004	551,709	688,004	551,709
Mauri Ora	2,610,186	1,796,912	2,610,186	1,796,912
Governance	859,487	824,519	370,563	320,023
Finance Costs	423,925	323,993	0	0
Costs of Goods Sold	22,878,325	19,521,727	0	0
Impairment	5,521,122	0	0	0
Total Expenses	40,036,301	29,662,469	4,861,771	3,682,637
Share of surplus (deficit) - Associates & Joint Ventures	(260,318)	217,859		
Capital Gain on Sale of Assets		763,482		
(Deficit) for Year	(9,464,497)	(2,106,067)	341,743	272,003

CONSOLIDATION SUMMARY STATEMENT OF MOVEMENTS AND FINANCIAL POSITION

EQUITY				
Opening Balances as at 1 July	67,273,589	69,729,656	2,636,497	2,714,494
Net Surplus (Deficit) for the Year	(9,464,497)		341,742	272,003
Other Comprehensive income		(2,106,069)		
Contributions from (Distributions to) Owners	(420,000)	(350,000)	(420,000)	(350,000)
TOTAL EQUITY	57,389,092	67,273,587	2,558,239	2,636,497
ASSETS				
Total Current Assets	14,499,880	7,883,232	4,958,556	1,611,234
Total non-Current Assets	69,262,913	73,516,035	2,715,545	2,700,019
TOTAL ASSETS	83,762,793	81,399,267	7,674,101	4,311,253
LIABILITIES				
Total Current Liabilities	20,673,431	13,115,392	5,115,861	1,674,756
Total non-Current Liabilities	5,700,270	1,010,288		
TOTAL LIABILITIES	26,373,701	14,125,680	5,115,861	1,674,756
TOTAL EQUITY & LIABILITIES AS AT 30 JUNE	83,762,793	81,399,267	7,674,101	4,311,253

Ngāti Kahungunu Iwi Incorporated Summary Financial Statements

RECLASSIFICATION OF COMPARATIVE FIGURES 2020

In the 2020 year the total expenses for Takitimu Seafoods Limited Partnership were included in the line "Takitimu Seafoods Operating Expenses". In the 2021 year administration, operating, employee, finance and governance costs for Takitimu Seafoods Limited Partnership were analysed to Administration and Operating Expenses, Finance Expenses and Governance Expenses categories with the 2020 comparative figures adjusted accordingly.

Summary of the re-analysis - 2020 comparatives

- Increase to Administration and Other Operating 4,411,363
- Increase to Finance Expenses 79,227
- Increase to Governance Expenses 20,833
- Decrease to Takitimu Direct Costs 4,511,423

(Last year classified as Takitimu Seafoods Operating Expenses)

There has also been a re-classification of Direct costs and Sales for Takitimu Seafoods Limited Partnership for 2020 in relation to a credit to do with Export Tuna which is sold on a commission basis, \$2,615,766 was recorded as income when it should have been recorded as a reduction in the cost of sales. Overall no difference to the net trading result for Takitimu Seafoods Limited Partnership.

FOR THE YEAR ENDED 30TH JUNE 2021

To the Members of Ngāti Kahungunu Iwi Incorporated

We present to you a summary of the unaudited financial statements. This year has been extraordinarily challenging. The Kahungunu Asset Holding Company is working through business opportunities that requires further in-depth research.

Each tribal member is entitled to obtain a copy of the full financial statements when they are available. Requests should be made to the Ngāti Kahungunu Iwi Incorporated Director of Smart Services, Ruth Wong – Ngāti Kahungunu Iwi Incorporated, Taikura House, Level 1, 304 Fitzroy Avenue, Hastings. Phone 06 8762718 or toll free 0800 524 864 or email ruth@kahungunu.iwi.nz.



Ngāti Kahungunu Iwi Incorporated
Chairman
Ngahiwi Tomoana



Kahungunu Asset Holding Company
Chairman
Trevor Moeke



K3 apprentices look at new opportunities.

Ministers visit Takitimu Seafoods and the beautiful Tautane Farm





Ngāti Kahungunu Iwi
INCORPORATED

Annual Plan 2021-2022

VISION STATEMENT

“Kahungunu – ki te whaiao, ki te ao mārama”
“Achieving excellence in all areas of our lives”

MISSION STATEMENT

“Kia maumahara ki te mana āhua ake o Ngāti Kahungunu”
“Uphold the absolute uniqueness of the living breath of Kahungunu
and enhance the mana and well-being of Ngāti Kahungunu Iwi”

STRATEGIC OBJECTIVES

Ngāti Kahungunu – Culturally Strong
Ngāti Kahungunu – Healthy and Vibrant
Ngāti Kahungunu – Economically Strong
Ngāti Kahungunu – Global Citizens
Ngāti Kahungunu – Self Determined
Ngāti Kahungunu – Healthy Environment
Ngāti Kahungunu – Making our Mark

Annual Plan

Ngāti Kahungunu Iwi Incorporated (NKII) recognises the need to review its objectives and align its strategies with the needs of whānau & hapū.

In March 2021 the NKII Board reviewed the 2020-2021 Annual plan to evaluate what we have achieved and carefully assess the best way to drive the organisation forward into the future. The Board identifies the importance of remaining relevant with the current environment and ensuring that our efforts contribute to our 25year vision.

The Board Priorities are:

- Housing & Home Ownership, Employment, and Education,

The iwi strategies are:

- He Mahere Rautaki Hai Haumanu I Te Reo O Ngāti Kahungunu / Kahungunu, kia eke - The Revitalization of Te Reo o Ngāti Kahungunu;
- Kahungunu Ki Uta, Kahungunu Ki Tai - Marine and Freshwater Fisheries Strategic Plan; and
- Te Ara Toiora O Ngāti Kahungunu, the Kahungunu Wellbeing Strategy.

The Ngāti Kahungunu Iwi Incorporated Annual Plan describes the key objectives for the 2021-2022 year. These objectives are based on the iwi's seven pou that make up the 25 year vision (2001-2026) (1) Economically Strong, (2) Participating Citizens of the World, (3) Tinorangatiratanga, (4) Making our Mark, (5) Strong, Healthy, Vibrant whānau, hapū, marae, (6) Culturally Strong and (7) Protecting our Environment.

The objective of this plan is to achieve the organisations mission which is to enhance the mana and wellbeing of Ngāti Kahungunu.

KAHUNGUNU, KIA EKE! STRATEGIC PLAN FOR THE REVITALISATION OF TE REO MĀORI WITHIN NGĀTI KAHUNGUNU

- Re-establish the Runanga Mātauranga (Mātauranga Board);
- Refresh the Ngāti Kahungunu education strategy and implementation plan;
- Plan, lead and manage the Ngāti Kahungunu Kura Reo event to capture new speakers and increase proficiency of existing speakers; and
- Keep our iwi members informed.

NGĀTI KAHUNGUNU NATURAL RESOURCES & ENVIRONMENT KAHUNGUNU KI UTA, KAHUNGUNU KI TAI – MARINE AND FRESHWATER STRATEGIC PLAN

- Advocate for Ngāti Kahungunu objectives and values to be incorporated into natural resources decision making and policy developed by local, regional and central government;
- Develop Ngāti Kahungunu Taiao policy;
- Support hapū to progress hapū management plans to enhance their role as Kaitiaki of the natural resources;
- Develop quality relationships with organisations to assist us to achieve our natural resource objectives which help to build the capacity and capabilities of our people;
- Plan, lead and manage the Fish Hook Summit to give Kahungunu whānau, hapū the opportunity to report their developments to the iwi and to engage with and learn from other kaitiaki in the rohe; and
- Keep our iwi members informed.

TE ARA TOIORA O NGĀTI KAHUNGUNU KAHUNGUNU WELLBEING STRATEGY

- Continue to meet with Te Tumu Whakahaere o Te Wero advocacy group to determine the health and wellbeing needs of our people;
- Strengthen and consolidate strategic relationships with key central and local government agencies to facilitate and increase effective provision that contributes to achievement of strong, healthy, vibrant whānau. These agencies include Oranga Tamariki, Corrections, Justice, Housing, Ministry of Education, Ministry of Social Development and Employment agencies;
- Fill the Director of Te Ara Toiora vacancy to direct, manage and monitor these aspirations; and
- Keep our iwi members informed.

NGĀ POU TAUNAKI - SMART SERVICES

- Increase the vibrancy and wellbeing of Kahungunu whānau through events by organising and managing Waitangi Day, Matariki events, and the AGM Pā Sports;
- Maintain the iwi registration database and update incorrect information; Increase the opportunity for Taiwhenua administration of the SQL Database online. Look at ways to allow online updating by individual members;
- Build networks with organisations and seek smarter and more innovative ways to deliver benefits to members;
- Continue to provide benefits to members including scholarships, sponsorships, pātaka and other free or heavily discounted services;
- Provide high level secretarial administration services and office systems and encourage paperless, eco-friendly options;
- Improve on our standard processes and implement policies;
- Regularly communicate with whānau through online website, Panui ki te iwi email, facebook, frequent visits to the Taiwhenua and Taurahere where possible, to inform and keep whānau abreast of iwi activities and opportunities for whānau hapū and iwi development;
- Profile Success, Celebrate Kahungunutanga in all forms and at all levels. Increase our media releases of Kahungunu achievements;
- Highlight the iwi's key messages and put them in all communication formats including email signatures, website, and all pertinent communications;
- Use te reo Māori in all communications; and
- Record modern Kahungunu history for future generations.

NGĀ TŪHONOHONOTANGA - POLITICAL

- Hold the triennial Governance Board Election 2022
- Strengthen our relationship with the hapū claimant groups within the Ngāti Kahungunu rohe;
- Improve Kahungunu representation on local and regional councils;
- Influence policy developed by government agencies, local and regional councils;
- Monitor the performance of these entities based on Kahungunu criteria; and
- Keep our iwi members informed.

TE WHAKATIPU ŌHANGA - ECONOMIC DEVELOPMENT

- Develop and progress the economic status of Kahungunu whānau, hapū, iwi by continuing to work with our iwi partners to progress and implement the Ngāti Kahungunu Economic Development Strategy; and
- Keep our iwi members informed.

AGM GOES VIRTUAL

This year would have marked the 16th AGM Pā Sports Day held in and around New Zealand's Biggest Family Water Themed Park - Splash Planet, Hastings. However, due to COVID-19 Alert Level Lockdown conditions, the Ngāti Kahungunu Iwi Incorporated Board has chosen to hold a virtual online Annual General Meeting.

We invite all iwi members to join in this virtual meeting by registering your interest to attend. See detail below.

STAY CONNECTED

A number of our whānau may need help to watch the AGM online either by zoom or by live stream. Please plan to watch the event as a whānau, and feel free to participate. You can register with us and we will send you the zoom details to come in and be a part of the meeting, or you can watch it on the livestream, either way, we want you to stay connected.

BENEFITS TO MEMBERS

At this time of the year Ngāti Kahungunu Iwi Incorporated goes all out to ensure the AGM Pā Sports is a reunion to remember. We provide discounted tickets to Splash Planet, we pay for buses to get our people to the event, we host different sports and we provide lunch for everyone and even a take home kai hau kai. This year we want to do the same, but like everything in 2020 - 2021 it's going to be a little different. This time your benefit will come to your Taiwhenua who will decide how they will distribute to the registered beneficiaries in your rohe. Please note, this is not a COVID fund, this is a direct benefit to our registered iwi membership.

NGĀTI KAHUNGUNU IWI INC. ANNUAL GENERAL MEETING

SATURDAY 27 NOVEMBER 2021

11:00am-12:00pm

AGENDA

11:00am **Standard Business**

- | | |
|--|--|
| <ul style="list-style-type: none">• Hīmene/Karakia• Mihi whakatau• Apologies• Maumahara• Minutes of AGM 2020• Chairmans Report• Kahungunu Asset Holding Company Report | <ul style="list-style-type: none">• Audited Financial Statements 2020-2021• Re-appoint Auditor• Annual Plan 2021-2022• NKII Election 2022 Presentation• Questions and Answers• Hīmene• Karakia |
|--|--|

GO TO OUR WEBSITE TO REGISTER TO ATTEND THE MEETING

<https://www.kahungunu.iwi.nz/annual-general-meeting>

OR ring the iwi office and one of the team will register your interest.

Phone 0800 524 864 ext 0.

We invite all iwi members to join in this virtual meeting by registering your interest to attend. By registering, you will receive instructions for joining the meeting and receive access to all necessary documentation prior to the meeting and you will automatically be added to the attendance list. This information will also go live to a public audience, however you must register for us to note your attendance. You will also have the opportunity to submit any questions you may have for the AGM – these are being collected prior to the meeting so they can be addressed by the Chairman on the day.

Sporting teams play at the Waitangi Day Sports Event.



KAHUNGUNU LIVING LONGER

Ū TONU TIHEI MAURI ORA

VACCINATE
YES!



PROTECT YOU, PROTECT YOURS, PROTECT US



Tūtira Mai Ngā Iwi concert of Unity at the Hawke's Bay Arts Festival held at Toi Toi. (Oct 2020)



Ngāti Kahungunu Iwi
INCORPORATED

TAIKURA HOUSE 304 FITZROY AVENUE, PO BOX 2406, HASTINGS 4156, NEW ZEALAND
PHONE 06 876 2718 • TOLL FREE 0800 KAHUNGUNU (0800 524 864)
EMAIL: ruth@kahungunu.iwi.nz
WEB: www.kahungunu.iwi.nz



AGM 27 NOVEMBER
11 AM VIRTUAL EVENT