

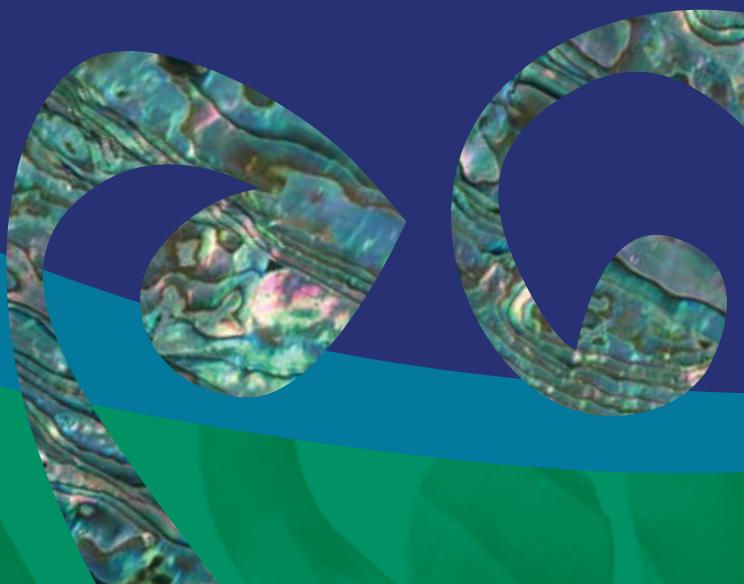
# Hoea rā



**Ngāti Kahungunu Iwi**  
INCORPORATED

## Annual Report 2023 - 2024

Published October 2024



# Table of Contents

	Page
Purpose, Vision & Mission	1
Chairperson's Report	2
Chief Executive's Statement	4
Our Year at a Glance	6
Board Members 2022-2025	8
Staff Members 2023-2024	10
Ngāti Kahungunu Iwi Incorporated Organisation Structure	11
Te Reo, Tikanga & Mātauranga	12
Te Taiao Me Ōna Rawa	14
Te Ara Toiora - Pathway to Wellbeing	16
Smart Services and Benefits to Members	20
Kahungunu Asset Holding Company Ltd Chairman's Report	27
Kahungunu Asset Holding Company Ltd Directors	31
Ngāti Kahungunu Iwi Incorporated Summary Financial Statements	33
Annual Plan 2024-2025	35
AGM Agenda	39



# Purpose, Vision & Mission

Ngāti Kahungunu Iwi Incorporated, with the mandate to represent the people of Ngāti Kahungunu, is the governing body for all aspects of Ngāti Kahungunu Iwi development.

The purpose of Ngāti Kahungunu Iwi Incorporated is to:

- Promote or assist the education of Ngāti Kahungunu Iwi
- Promote the custody and preservation of the beliefs, customs and language of Ngāti Kahungunu Iwi
- Promote the social and economic welfare advancement and vocational training of Ngāti Kahungunu Iwi
- Promote personal, whānau and community health and wellbeing and raise the living standards of Ngāti Kahungunu Iwi
- Promote high quality communications to and for the benefit of the members of Ngāti Kahungunu Iwi

## *Strategic Objectives*

In September 2001 consultation with whānau throughout the rohe of Kahungunu occurred. Whānau shared their views, aspirations and desires which helped shape the development of a vision to guide Ngāti Kahungunu into the future. The vision, known as Kahungunu 2026, outlines the vision and mission statements and seven identified strategic objectives to focus on. The Ngāti Kahungunu Iwi Incorporated planning framework continues to outline priorities, activities and desired outcomes that link directly to the seven strategic objectives within the Kahungunu 2026 vision.

The seven strategic objectives are:

- Ngāti Kahungunu - Culturally Strong
- Ngāti Kahungunu - Healthy and Vibrant Whānau
- Ngāti Kahungunu - Economically Strong
- Ngāti Kahungunu - Informed and Participating Citizens in the World
- Ngāti Kahungunu - Independent and Self Determined
- Ngāti Kahungunu - Healthy, Thriving and Sustainable Environment
- Ngāti Kahungunu - Making our Mark

## *Vision Statement*

“Kahungunu - ki te whaiao, ki te ao mārama”

Achieving excellence in all areas of our lives

## *Mission Statement*

Kia maumahara ki te mana āhua ake o Ngāti Kahungunu

Uphold the absolute uniqueness of the living breath of Kahungunu

“To enhance the mana and well-being of Ngāti Kahungunu Iwi”

## *Reporting*

Ngāti Kahungunu Iwi Incorporated has an obligation to provide an ‘Annual Report’ for its membership to account for the previous financial year 1 July 2023 – 30 June 2024. This document provides a summary report against the objectives set out in the 2023-2024 Annual Plan. It includes steps taken to increase the registration database and gives an overview of the organisation’s performance, including changes in the value of its assets, profit distribution and the summary financial statements.

# Chairperson's Report



*Ngāti Kahungunu ki te whaiao ki te ao mārama, tīhei mauriora!*

*He rārangi maunga tū tonu, he rārangi tāngata, ngaro noa!*

*E tangi tonu ana te ngākau i te rironga o Kīngi Tūheitia Pōtatau Te Wherowhero VII, koia kua ngaro nei i a tātou i ngā marama kua taha ake nei. E te Kīngi o te Kotahitanga, nāu i whakakotahi ai te iwi Māori i te ora, nāu anō hoki tērā e pērā ana i te mate, moe mai rā. E tika ana te kōrero, mate atu rā he tētēkura, ara mai rā he tētēkura! Ara mai rā e te Arikini, e te Kuini hou a Ngā Wai Hono i te Pō!*

*Heoi anō, e ngā mate huhua o te tau kua pahure ake nei, rātou te hunga kua mene atu rā ki te pō, haere, haere, haere atu rā. Tātou ngā mahuetanga mai o rātou mā, huri noa, tēnā tātou. Kei ngā tukemata o Kahungunu, kei ngā maunga whakahī, kei ngā wai tukukiri o ngā tīpuna mātua tēnā tātou katoa.*

*Kātahi te tau ko tēnei kua hipa nei! Mai i te wā i kāwanatanga hou mai ngā pāti tokotoru rā, kua nui ngā mahi a Ngāti Kahungunu me ngā iwi o te motu ki te whakangungu i a tātou anō. I tū ai te hui-ā-iwi ki Waimārama i te marama o Tihema 2023, ka whai mai ko te hui-ā-motu i karangatia nei e Kīngi Tūheitia i te marama o Hanuere 2024, ka whai mai ko Rātana me Waitangi i te marama o Pepuere.*

*Nāwai rā, ka tū te hui-ā-iwi ki Waipatu Marae, ā, ka whai mai ko te Hui Taumata ki Omāhu Marae i te marama o Mei. Nikā te kotahitanga o te iwi Māori hei whakawhanake i a tātou anō e hoa mā! Nā, i tū ai a Toitū te Reo me te 18th Koroneihana o Kīngi Tūheitia i te Akuhata me tana tangihanga nui i te Hepetema. E hika mā, e hia nei ngā hui ora i whakaora nei i a tātou, i whakakotahi nei i a tātou i te tau nei!*

This has been a very eventful year for our people. Since the inception of the Coalition Government and the rollout of its policies, Ngāti Kahungunu and iwi Māori throughout the motu have been involved in the many hui that I have outlined above. In addition to our two hui-ā-iwi at Waimārama and Waipatu Marae, Ngāti Kahungunu calling a Hui Taumata at Omāhu Marae on May 31 was the crowning event for our people in 2024.

Kīngi Tūheitia led a delegation of thought leaders from around the motu, totalling over 3500 people. We had 30 thought papers presented on Kotahitanga and over 25 speakers from around the motu that day. Our Ngāti Upokoiri, Ngāti Hinemanu and Ngāti Honomōkai whānau did a fantastic job hosting the motu. Our ancestors were staunch advocates of Kotahitanga, with the 1892 hui held at Waipatu Marae, followed by hui at Pāpāwai Marae. We will continue to advocate politically to move our people forward and endeavour to shape a better future for our tamariki mokopuna.

In addition to our people engagement and political advocacy, we have been very busy building our ohanga and oranga. Commercial prosperity and the well-being of our people need to be flourishing together. Despite the challenges our Asset Holding Company have faced over the past few years, our directors have been working hard to turn the waka around and are making good progress. At our Special General Meeting on September 18, we presented the audited financial statements for 2023 which showed a marked improvement on the prior year. Again in 2024, we have improved the iwi's financial position considerably. The key message is that our Asset Holding Company is strengthening how our iwi assets are managed and ensuring that risk is managed appropriately. The plan going forward is marked out in the Statement of Corporate Intent which is guided by the Kahungunu Strategic Plan.

In terms of the oranga of our iwi, we continue to deliver across the various portfolios of events, mātauranga, taiao, oranga/ hauora and housing. As is

# Chairperson's Report

outlined in Chrissie's report, she and the team have invested considerable resources into these portfolios to ensure our people are living their best lives and thriving in all they do. Our Waitangi Day and Matariki events are second to none and continue to attract thousands of Kahungunu whānau. The Kahungunu Fishhook Summit is a valuable opportunity to engage in kaupapa taiao and take āhuarangi (climate change).

Toitū te Reo was a huge success with over 7000 people converging on Heretaunga to celebrate our Reo rangatira. This is a kaupapa that Ngāti Kahungunu supported in partnership with Kauaka and the Hastings District Council. Te Ara Mātua programme hub was launched ensuring that our whānau stay as far away from state care as possible and are supported by their own. Our housing team has supported 86 whānau by building and locating temporary housing in marae communities devastated by Cyclone Gabrielle. They have also funded several Papakāinga projects and are now developing affordable rentals for whānau.

Our Communications team continues to lead out on ensuring our people are fully abreast of all the kaupapa that have an impact on our lives. Earlier in the month Ngāti Kahungunu and our Post Settlement Governance Entities (PSGEs) hosted the National Iwi Chairs Forum at Toitō Hastings. Again this is an opportunity to unite as iwi to leverage our collective strengths to improve the lives of our people. Kotahitanga is a simple message, together we are stronger!

We look forward to doing more collective mahi with our PSGEs and Taiwhenua. We are there to serve all our people, so it makes better sense to do this together. We are keen to start socialising what a Kahungunu Kotahitanga Model could look like as these entities move forward together.

As we move into 2025, we will be holding our triennial elections. I encourage you to get involved in this process. We must have the best people governing the mahi of our iwi and you have the opportunity to vote who represents you at the table.

Finally, We will also be consulting with you on the next 25-year vision and plan for Ngāti Kahungunu going forward. We need to know what is most important to you and your whānau and what is the best way to get there. We will start with whānau surveys at this AGM and look to run a series of roadshows in 2025. We have also pulled together the information gathered from our hui-ā-iwi and hui-ā-motu in 2024 which will add to the feedback.

Heoi anō, hei whakatepe kōrero māku, I would like to acknowledge our board, our CE and our staff for the mahi that has been achieved in the last 12 months. These have been unprecedented times for our iwi, our hapū and marae. Nowhere in our history have we had to deal with the devastation of Tāwhirimātea directly followed by the political headwinds we are experiencing today. Kia kaha ā tātou mahi tahi kia māmā ake ngā pikaunga kei runga i a tātou i tēnei wā, kei reira kē te orange mō te iwi.

*Nō reira, mā te atua koutou e manaaki, e tiaki i a tātou e whakaterere tahi nei i tō tātou waka, kia pae ai ia ki uta. Tau mai te mauri, te mauri o ēnei kōrero, kia eke Panuku, kia eke Tangaroa, hui e, tāiki e!*



**Bayden Barber**  
Tumuaki / Chair



# Chief Executive's Statement



*E rere ana ngā mihi aroha ki te whare o te Kiingi Māori, mō te hinganga o tētahi pou tokomanawa o te motu, arā, ko te Kiingi Tuheitia Pōtatau Te Wherowhero VII.*

*I te taha o te iwi o Tainui waka, ka mihi hoki mātou, Ngāti Kahungunu, ki te mana whakahirahira o tō rātou ariki, te tupuna kua whetūrangitia. Ko tōna mana i whāriki i te huarahi mō te kotahitanga o ngā iwi Māori puta noa i te motu, ā, he tohu whakamahara ki a tātou katoa te mana nui o te Kiingitanga i roto i te whakapapa, te tikanga, me te wairua o tō tātou iwi Māori.*

*Ka tukua atu ngā aroha me ngā mihi tangi ki tōna whānau pani, ki ngā uri o te whare o te Kiingi, me te iwi whānui o Tainui. Haea te ata, ka pō, ka ao, ka awatea .*

The last 12 months continued to test the resilience and commitment of the Iwi Tari but it also encompassed the realisation of mahi over the last 5 years with gains made across the directorates of Ngāti Kahungunu Iwi. With the lack of a dividend from our Assets Holding Company in 2022 and 2023 and a contribution to Governance costs only in 2024, Ngāti Kahungunu Iwi has relied on administrative fees gained through funding and commissioning agreements to support the operations of the Tari.

These years of restrictions has meant that we have had to adapt, be more creative and consider doing things differently holding on to what is most important to Ngāti Kahungunu Iwi whānau whānui. In 2024 we restored our sponsorships (community and individual) and educational scholarships. A relationship agreement with the Māori Education Trust facilitated by our Chair has (through their contributory funding arrangements with multiple educational institutions), enabled an increase in funding to recipients. Our Events Team continues to look at how we can improve our engagement with our whānau while continuing a frugal approach to funding levels. This year we committed to partner with Kawaka and Hastings District Council to hold Toitū Te Reo in August 2024. The event was exceptional.

Our Mātauranga team continue to work across the educational system to increase awareness of the inequities for our Tamariki and Rangatahi within the education ecosystem, share knowledge and experiences to facilitate increase knowledge of whānau. Te Ao Mārama podcast series documents such lived experiences from various lens through interviews with Kahungunu whānau across a broad range including views on the current political environment. You can find these on our Kahungunu website. The Mātauranga team is working with Taonga Takiwātanga Charitable Trust to support whānau and the many others who are impacted by autism and neurodiversity.

Ngaio and Shade continue to advocate for marae, hapū and ngā Taiwhenua o Kahungunu to push for better decision making with local & central government and interested parties. Alongside of this they are working with hapū to provide the tools and knowledge to assert their own mana motuhake across their takiwā. The water quality project in Bridge Pa is an example of this where training is being provided and a hub established.

Kahungunu Kainga Housing Team continue to provide accommodation relief through the Cyclone cabin programme, delivering 86 of our 100 cabins across our most devastated communities. 14 cabins were handed back to MHUDs to support Maungaharuru Tangitū to provide cabins for their affected whānau of Tangoio. The Team has also taken on the project management and delivery for the Temporary Accommodation Service in Omaha funded by MBIE. The project is scheduled to be completed in November. 34 papakāinga houses have been approved across 9 projects. These developments did not meet the Te Puni Kokiri criteria for various reasons. The Team worked alongside the Whānau Trusts and their

# Chief Executive's Statement

chosen developer to get it to a point of viability. One particular project which will house 5 generations languished for 8 years. This project will be completed by June 2025. We are working with TPK, MHUDs and whānau trusts to allocate the remainder allocation of 52 houses. These will be spread across the Hastings and CHB Districts where the tension on housing is greater in our rohe.

In Toiora Ngāti Kahungunu Iwi have taken a different approach over the last 5 years. We have actively engaged with whānau to share their lived experiences to inform our conversations with the Crown and the development and design of our interventions. An example of this is Korero Mai Whānau – Undiluted voices of whānau. This obligation to our whānau is one we uphold and honour in everything we do. These stories and engagement with our whānau champions continue into 2024 with the development of Te Paerewa concept in partnership with NZ Police which shifts focus to prevention and care rather than arrest and incarceration. This concept is now well developed, and we continue to work with NZ Police on how it should be applied. The same approach informs the work we are doing with the Ministry of Justice, and the Judiciary under the guidance of Judge Heemi Taumaunu to introduce Te Ao Mārama to the Family and District Court proceedings. A publication capturing the voices of whānau, and their aspirations is on our website Te Ao Mārama Court in Te Matau-a-Māui.

Ngāti Kahungunu Iwi Incorporated is not a provider of services but acts as an advocate, partner and commissioning body (since 2020) working together with our Te Wero partners and Crown agencies to positively disrupt the deficit impact of experiences with the social service ecosystems and apply effective responses to be informed through the whānau voice. Such approaches include Paiheretia Te Muka Tāngata – Kaiarataki service with Te Puni Kokiri, Te Kura Family Harm coordination and in 2024, Te Ara Matua with Oranga Tamariki. To do this we have built significant capability and capacity across the commissioning framework of strategic analysis & assessment, design, delivery, funding agreements, monitor/review and evaluation to support this work.

The current political environment has led to significantly increase our advocacy. As an Iwi we have opposed and submitted against the repeal of Section 7AA of the Oranga Tamariki Act, the Fast Track Approvals Bill (locally and nationally through the Taiao team), and the abolition of Māori Wards led by our Chair. Moving forward we will also submit against the Principles Bill and work alongside of the National Iwi Chairs Forum to increase and strengthen the lobbying power of Māori in the continuous fight against the actions marginalising Te Reo, removal of Te Tiriti obligations in Government policy, and the dismantling of Te Mana o Te Wai within the National Policy Statement for Freshwater Management.

Looking forward we will continue to advocate for whānau while taking a frugal and cautious approach to how we manage and support our operations.



**Chrissie Hape**  
Kaiwhakahaere Matua - Chief Executive

# Our Year at A Glance 2023-2024

Scholarships and Sponsorships are revived

19 individuals and groups are supported with sponsorships.

10 community groups supported with NKII in kind support

58 taura receive an education scholarship worth \$500 each

4 taura receive an education scholarship worth \$5,000

1078 new members register with the iwi

45,000 people attend the 9 Matariki events

The Hastings District Council fully subsidises the hireage of Splash Planet for the 2023 AGM Pā Sports Day.

NKII holds two Hui-ā-Iwi to unite the iwi

NKII leads political action plan

NKII hosts Hui Taumata to unite our efforts with the nation

Kahungunu hosts 13th Fish Hook Summit

Te Ao Mārama Pod Casting – Everything Matauranga is initiated

A significant milestone reached – Te Ara Mātua Wānanga Hubs opened

1000 stories collected to drive the Te Ao Mārama in Te Matau-a-Maui policy reform to transform whānau experience of the justice system

The undiluted voices of whānau report is published.

A total koha of \$1.2m received then distributed out to affected marae in Waioira, Tangoio, Porangahau, Waiohiki, Omahu, Moteo and Petane

Obtained and distributed 10 Welfare Containers to marae

Iwi publishes the 135th edition of Tihei Kahungunu

Delivered 86 Cabins across our most devastated communities

Delivered Temporary Accommodation Service in Omahu

34 papakāinga houses approved across 9 projects



Fish Hook Summit, Napier, June 2024



## WHAT DOES KOTA HITANGA MEAN TO ME?

**SHILOAH TUAVERA** - UNITY, WORKING TOGETHER AND FUNCTIONING TOGETHER AS ONE. • **NAADEAN WAINOHU** - WHAT DRIVES YOUR PURPOSE FROM THE HEART AND WORKING TOGETHER WITH A LIKE MINDED TEAM • **JULIE FERGUSON** - KOTA HITANGA MEANS COMING TOGETHER AND TOGETHER WE WILL ACHIEVE MORE • **SIAM** - BEING UNITED AS ONE, BEING IN UNISON AND EQUALITY NOT JUST FOR OUR PEOPLE BUT FOR ALL • **JEZZIEH PENNI MATTHEWS** - WORKING TOGETHER AS A COMMUNITY OR AS A VILLAGE, TO WORK TOGETHER AS ONE TO MAKE AN IMPACT IN SOCIETY • **LILLIAN KAHUKURA** - THAT WE ARE ONE, UNIFIED, GOING ON THE SAME PATH, ALL WANT THE SAME GOAL AND WE WILL ALL GET THERE TOGETHER • **PARRIS SCIASCIA-BROWN** - TOGETHERNESS, THE CONCEPT THAT WE ARE AS ONE, BY GIVING THE MANAAKITANGA, THE AWHITANGA, THE TAUTOKO, THE AROHA, AND AT THE SAME TIME RECEIVING IT BACK, ITS NOT ABOUT LEVELS OR WHO'S WHO OR WHAT'S WHAT, WE ARE ALL ONE AT THE END • **ORENADA** - UNITING TOGETHER AS ONE, AS A WHANAU, AS A ROOPU, MAKING SURE OUR CONNECTIONS ARE NICE AND TIGHT AND THAT WE ARE SUPPORTING EVERYON ANY WAY WE CAN • **WHETU MARAMA PAENGA** - ANYONE OR EVERYONE WORKING TOGETHER AND UPLIFTING TO CREATE A BETTER FUTURE FOR THE NEXT GENERATION. • **LILLIAN BARTLETT** - INHERENTLY AS MAORI WE ARE A COLLECTIVE, PEOPLE IN THE THINGS THAT WE DO, HOW WE GATHER AROUND KAI, IN SPORT, IN HAPI, AND ASA WAHINE, I THINK ABOUT MOVEMENT IN REGARD TO SPACES IM INVOLVED WITH, THE WAY THAT MY TAMARIKI AND I MOVE AS A WHANAU, THE WAY THAT WE MOVE WITH OUR HAPI AND WHANAU IN TE TAIAO. KOTA HITANGA IS THE WAY THAT WE MOVE IN THE MANY THINGS THAT WE'RE INVOLVED IN • **JANE HUIA** - WORKING TOGETHER AS ONE • **ARIHANA HAKIWAI** - STRENGTH IN KNOWING THE KAUPAPA AND UNITING IN IT • **EZRA TE HUIA** - TO BE OPEN AND TRANSPARENT AND AUTHENTIC, WITH THOSE TWO THINGS WE CAN COME TOGETHER AND UNITE. • **SHAQAILA UELESE** - STANDING TOGETHER MAKING SURE ALL VOICES ARE HEARD AND MAKING DECISIONS THAT INVOLVE EVERYONE • **JAYDEN GILLIES** - GIVES YOU A GREATER PURPOSE TO WORK FOR THAN JUST YOURSELF. AS A MALE ITS ABOUT DOING STUFF THAT BENEFITS OTHERS, PUTTING OTHERS BEFORE YOURSELF, ITS ABOUT YOU REAPING THE REWARDS OF THEIR JOY • **ANIHERA MCCLUTCHIE** - UNITY, PEOPLE COMING TOGETHER AND MOVING FORWARD FOR ANY KAUPAPA • **DONETTE DELLOW** - THE COMING TOGETHER AS ONE WHEN YOU ARE ON THE SAME KAUPAPA • **SHANE TE HAUKAMO** - COMMUNITY AND UNITY, BRINGING EVERYONE TOGETHER • **HINEMOA COLLIER** - UNITY, SOLIDARITY, A WEAVING OF TOGETHERNESS WHERE WE SHOULD ALL BE HELPING ONE ANOTHER, NO MATTER WHAT WE ARE DOING, NO MATTER OUR THOUGHTS OR WHERE WE ARE • **NEEROD HAPI** - ONENESS WITH YOUR ENVIRONMENT, WITH YOUR IWI, YOUR HAPU, YOUR MARAE, YOUR WHANAU, ESPECIALLY WITH THOSE WHO LIVE AROUND YOU AND CONNECTING WITH THEM, HELPING EACH OTHER THROUGH SAD AND HAPPY TIMES, ENJOYING BEING TOGETHER AS FAMILY. • **TREVOR BIDDLE** - BE IN UNITY, ALL ASPECTS OF TOGETHERNESS JAAMIN PERE - BEING ONE DOING THINGS AS ONE • **TYRELL GEMMELL** - DO NOT ROW THE BOAT OUT OF UNISON OR YOU WILL NOT REACH THE SHORE • **JINNY CLARKE** - TOGETHERNESS, WE ALL COME TOGETHER AND WE ARE ALL ON THE SAME GOAL OR KAUPAPA. HELP OUR WHANAU TO BE SUCCESSFUL AND GOOD PEOPLE IN SOCIETY. WE ARE ALL ROWING THE SAME WAKA. • **TYSON ATAERA** - UNISON, UNITED, IT TAKES A VILLAGE TO RAISE A CHILD. • **WHITNEY FERRIS** - UNITY, ONE HEART ONE MIND **HIKUWAI EDWARDS** - BEING TOGETHER, STANDING TOGETHER AND SOLIDARITY

Matariki, Marine Parade Napier, June 2024

# Board Members 2022-2025



Bayden Barber

## Chairman

Ko Te Whanganui-a-Tara te maunga  
Ko Waingōngoro te awa  
Ko Waimārama te marae  
Ko Taupunga te whare  
Ko Tiakitai te tangata  
Ko Ngāti Kurukuru te hapū  
Ko Ngāti Kahungunu te iwi  
Ko Tākitimu te waka  
Ko Bayden Barber tōku ingoa



Haami Hilton

## Kaumātua Representative

Ko Kahurānaki te maunga  
Ko Ngaruroro te awa  
Ko Poukawa te waiū  
Ko Kahurānaki te marae  
Ko Te Rangikoianake te hapū  
Ko Te Whatuiāpiti te tangata  
Ko Te Hāpuku te rangatira  
Ko Tākitimu te waka  
Ko Ngāti Kahungunu te iwi  
Ko Haami Te Kuru Hilton tōku ingoa



Hori Reti

## Te Whanganui-a-Ōrotu Taiwhenua Representative

Ko Maungaharuru te maunga  
Ko Tūtira te waiū  
Ko Te Ngaru te awa  
Ko Tangitū te moana  
Ko Tāngoio te marae  
Ko Hori Reti tōku ingoa



Thompson Hokianga

## Heretaunga Taiwhenua Representative

Ko Kahurānaki, Ko Te Awa Putahi oku maunga  
Ko Ngaruroro, ko Taurekaitai ngā awa  
Ko Mangaroa, Ko Rongomaraeroa, Ko  
Kahuranaki ngā marae  
Ko Rahunga I te rangi, ko Ngāti Kere, Te  
Rangikoianake ngā hapū  
Ko Takitimu te waka  
Ko Ngāti Kahungunu te iwi  
Ko Thompson Hokianga ahau



Nigel How

## Te Wairoa Taiwhenua Representative

Ko Taumutu te maunga  
Ko Mangapoike te awa  
Ko Iwitea te marae  
Ko Ngāi Tahu te hapū  
Ko Ngāti Kahungunu te iwi  
Ko Nigel How ahau

# Board Members 2022-2025



Jenny Nelson-Smith

## Tamatea Taiwhenua Representative

Ko Ruahine te maunga  
Ko Whatumā te waiū  
Ko Tukituki, ko Waipawa ngā awa  
Ko Pukehou, ko Te Whatuiāpiti, ko Te Tapairu,  
ko Mataweka, ko Rongo-a-Tahu, ko Rakautatahi  
ngā marae  
Ko Ngāi Toro-i-waho rāua ko Ngāi Te Whatuiāpiti  
ngā hapū  
Ko Takitimu te waka  
Ko Ngāti Kahungunu te iwi  
Ko Jenny Nelson-Smith tōku ingoa



Hayden Hape

## Kahungunu ki Tāmaki-nui-a-Rua Taiwhenua Representative

Ko Kaitoke te marae  
Ko Ngāti Pakapaka te hapū  
Ko Tākitimu te waka  
Ko Ruahine te maunga  
Ko Manawatū te awa  
Ko Ngāti Kahungunu te iwi  
Ko Hayden Hape tōku ingoa



Melissa Ihaka

## Kahungunu ki Wairarapa Representative

Ko Takitimu te waka  
Ko Rangitūmau te maunga  
Ko Ruamāhanga te awa  
Ko Ngāti Kahungunu te iwi  
Ko Hurunui-o-Rangi te marae  
Ko Melissa Ihaka tōku ingoa



Eruera Beattie

## Taura here Representative

Ko Whakapunake te taumata  
Marama te titiro ki te awa o Wairoa e ripo atu ra  
I whakataukitia e ngā tupuna  
Ko Wairoa hopupu honengenege matangirau te  
awa  
Ko Takitimu, ko Taihoa, ko Putahi ngā marae  
Ko Ngāti Kahungunu ki Te Wairoa te iwi  
Ko Eruera Beattie ahau



Brian Ruawai-Hamilton

## Taura here Representative

Ko Waikaremoana te moana  
Ko Waiau te awa e whāngai nei i te whenua me te  
tangata  
Ko Rangitūmau, ko Te Kuha, ko Arimāwhā ngā  
marae  
Ko Tamaterangi te tangata  
Ko Brian Ruawai-Hamilton tōku ingoa

# Staff Members 2023-2024



**Chrissie Hape**  
Chief Executive

Staff have come and gone throughout the year. We farewelled Jeremy Tātere MacLeod after a 14 year term with the iwi. Jeremy will continue to work with the iwi supporting the Kahungunu Reo aspirations from within his consultancy firm, Kawwaka.



**Ruth Wong**  
Director of Smart Services and Communications Advisor



**Dr Jeremy Tātere MacLeod**  
Director of Te Reo, Tikanga and Mātauranga



**Ngaio Tiuka**  
Director of Environment and Natural Resources



**Melissa White**  
Director of Te Ara Toiora and Kaiwhakahaere Te Ara Mātua



**Steve Gordon**  
Kaiwhakahaere of Whai Kainga, Whai Oranga - Housing



**Tawehi Munro**  
Iwi Partnerships Mātauranga Manager, Ministry of Education



**Shade Smith**  
Environment & Natural Resources Senior Analyst

## Whai Kainga, Whai Oranga - Housing Team



**Jane Cunningham**  
Kaiārahi



**Hannah Kupa-Elliott**  
Kaiāwhina

## Smart Services Team



**Kerrin Fair**  
Database Administrator Office IT Expert



**Hine Hape**  
Finance Officer



**Michelle Ferris**  
Executive Assistant



**Danielle Keil**  
Special Projects & Events Support



**Te Rangi Huata**  
Events & Promotions Manager



**Waiora Kireka**  
Receptionist/Administrator

## TE ARA TOIORA Te Ara Mātua Team



**Krystal Haimona**  
Kaiwhakahaere Hōtaka, Rangapū Iwi - Strategic Lead, Iwi Partnerships



**Ana Carroll**  
Kaitohutohu Matua, Rangapū Iwi - Senior Advisor, Iwi Partnerships



**Janice Stevens**  
Programme Advisor



**Georgina Te Amo**  
Commissioning Lead



**Chris Karaitiana**  
Community Capability Advisor

## Te Kura - Family Harm Team



**Nicosia Webster**  
Kaiwhakahaere

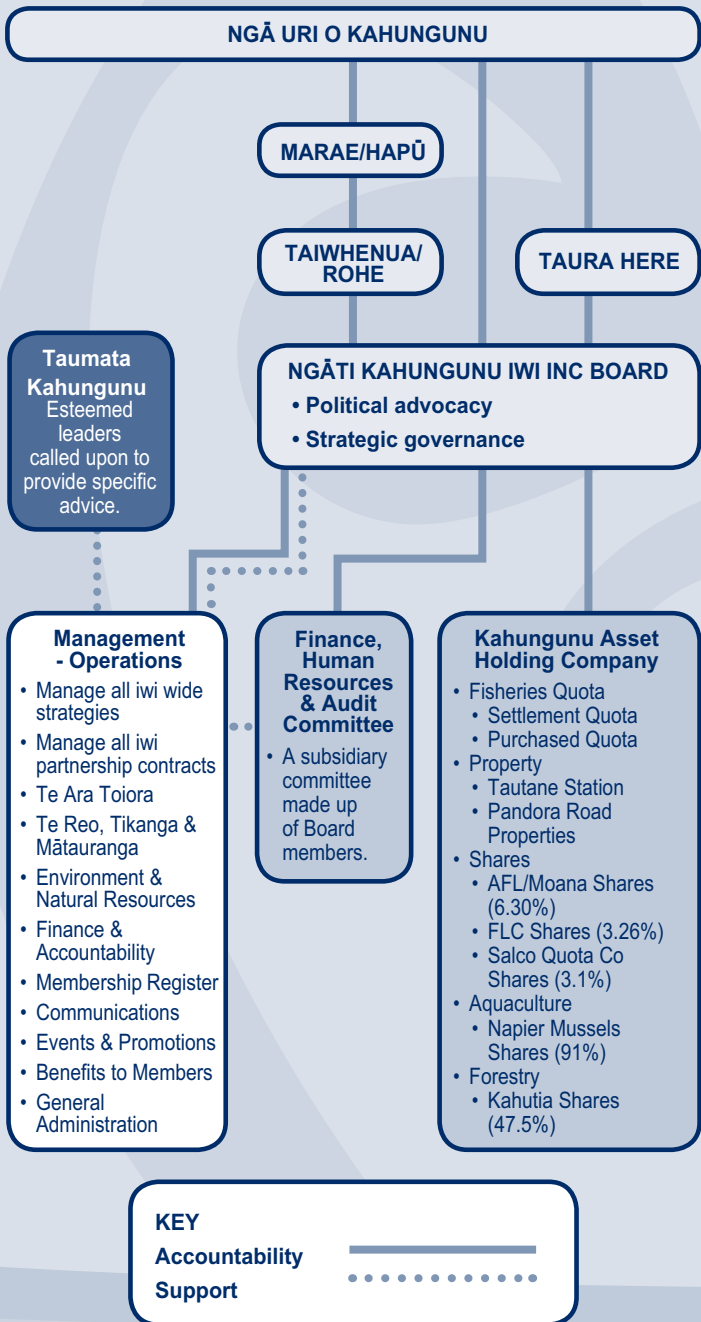


**Annie Sutton**  
Kaiāwhina



# Ngāti Kahungunu Iwi Incorporated Organisation Structure

Ngāti Kahungunu Iwi Incorporated is governed by ngā uri o Kahungunu through its constitutional organisational structure. This diagram depicts the structure of the iwi from marae/hapū to governance and through to management and workstream level.





# Te Reo, Tikanga & Mātauranga

## Te Reo, Tikanga and Mātauranga Report

The ability to converse in Te Reo enables whānau to recognise and uphold their whakapapa and cultural values and practices which contributes to overall wellbeing and self-worth and therefore equip them to participate and mark their mark within their hāpori, community, Iwi. Knowledge and use of Te Reo is seen as pivotal when conducting business internationally with other Indigenous people's as it is a sign of strength, connectedness, capability and values driven.

Our focus has been to champion and advocate for the use of Te Reo in the home and in business and to promote the custody and preservation of the beliefs customs and language of Ngāti Kahungunu.

This year Ngāti Kahungunu supported Te Reo revitalisation through the support of Toitū Te Reo. Ngāti Kahungunu Iwi Inc allocated funds from the F24 to partner with Kauwaka to hold Toitū Te Reo in August 2024. This was based on the Welsh Eisteddfod festival, Toitū Te Reo is an opportunity for both fluent te reo speakers and people just beginning their reo journey to gather with other speakers and 'karawhiua' - have a go. The event attracted over 5,000 people to attend the festival which has workshops and seminars for every level of Te Reo speaker regardless of your proficiency.

Kura Reo – continues to provide opportunities for whānau to learn and advance their journey of Te Reo learning. Our Kura Reo events followed suit with levels (entry, intermediate and advanced) fully subscribed. Two funding contracts with the Ministry have enabled the iwi – through one of its education providers - to deliver Te Reo and Tikanga Māori for education sector staff, and whānau who have young people learning te reo Māori in Kura Kaupapa Māori and Te Kōhanga Reo.

## Te Tōpuni Tauwhāinga - Mātauranga Strategy

Access to and attainment of quality Education is pivotal to enable whānau to improve their learning potential, skill acquisition, overall health and wellbeing and assert their mana motuhake (rangatiratanga). The refresh and work plan sets an action plan to address inequity and promote and assist the overall education of our whānau.

This strategy is now interwoven into our kaupapa across the Tari including Events, Toiora, Te Reo and Taiao actions and activities recognising the opportunity to engage and promote education and mātauranga across age groups with our whānau. Authentic Tiriti o Waitangi based relationships with the Ministry of Education, education bodies and education institutes (Crown agencies) remains high on our agenda, which supports our constitutional platform and its seven guiding principles.

The Ministry of Education has played a crucial role in supporting NKII, including a partial secondment of staff to the iwi and the provision of funding for key projects. One such project is Te Ao Mārama-Everything Mātauranga, a podcast available on Spotify and Ngāti Kahungunu's official website. The podcast delves into the iwi's knowledge, culture, and perspectives, featuring discussions on the six priorities of the Ngāti Kahungunu Mātauranga Strategy: Te Tiriti o Waitangi, reo me ōna tikanga, rangatiratanga, mātauranga, whanaungatanga, and tipuria te aroha. The podcast aims to bridge cultural gaps by sharing insights and stories from Kahungunu leaders, both locally and nationally, consequently making a meaningful contribution to the revitalization of Mātauranga Māori.

Additionally, the Ministry of Education funds the Taonga Takiwātanga Charitable Trust, which specialises in supporting neurodivergent whānau, particularly those with autism, through a kaupapa Māori approach. In 2024, the trust helped Ngāti Kahungunu facilitate two iwi-led wānanga— one for whānau and one for professionals (inclusive of whānau). These wānanga focused on sharing lived experiences and fostering support networks within the community. The feedback from participants was overwhelmingly positive, underscoring the need for more initiatives that focus on the intersection of neurodiversity and Mātauranga Māori. Ongoing

# *Te Reo, Tikanga & Mātauranga*

discussions within the Directorate of Te Ara Toiora will determine the next steps for supporting whānau with lived experiences of takiwātanga.

The Education Review Office (ERO) is nearing the completion of its external evaluation of several schools and a kindergarten in Heretaunga, including Hastings Girls' High School, Te Aratika Academy, Camberley School, Te Kura o Kimi Ora, Irongate School, and Mayfair Kindergarten. The evaluations have been guided by the overarching Ngāti Kahungunu question: "How effectively do leaders and teachers in the school and kindergarten restore rangatiratanga—for ākonga and whānau to exercise their authority and agency in their education?" This focus ensures that the evaluation process is aligned with iwi priorities, fostering stronger educational outcomes for both students and their families.

Looking ahead, the Ministry of Education has committed funding to support the planning and implementation of a mātauranga symposium scheduled for January 2025. While the details of this event are still being finalised, it promises to be another important milestone in the iwi's efforts to strengthen and preserve our cultural knowledge.

Recently, it was announced that the NKII Education in STEM/Education Forum will discontinue, largely due to the Coalition Government's recent legislative changes affecting iwi, hapū, and whānau. While the forum will no longer be active, the decision has led to a refocusing of NKII's efforts on strengthening achievements and relationships within the iwi and local communities.

The initiatives outlined above have had meaningful impacts on the revitalisation of te reo Māori, the preservation of Mātauranga Māori, and the empowerment of neurodivergent whānau. The Toitū Te Reo festival strengthened community connections through language and culture, while the Te Ao Mārama podcast and wānanga extended access to Mātauranga Māori and fostered cultural understanding. Furthermore, the educational evaluations and the future mātauranga symposium reinforce the iwi's leadership in shaping culturally relevant and inclusive education systems.

Toitū Te Reo, August 2024



# Te Taiao Me Ōna Rawa



## Environment and Natural Resources Report

Ngāti Kahungunu advocate for the protection and restoration of our environment and the empowerment of Ngāti Kahungunu whānau and hapū to assert their taiao rangatiratanga and to simply exist as 'tangata whenua'. This focus acknowledges the intrinsic link between identity, well-being, our values and the taiao or te ao turoa; in particular through our taonga, mahinga kai and associated practices.

Our commitment has been demonstrated through wananga, monitoring, advice and support to our people, hapū and other tribal authorities (Taiwhenua and PSGE's); promoting Ngāti Kahungunu taiao methodologies, standards; providing submissions and recommendations to environmental plan's, proposals, consent conditions and initiatives via collaborations, engagement, Council and Environment Court hearings, and parliament select committee.

Over the last 12 months, the Kahungunu Taiao team has been actively involved in numerous environmental monitoring, research and advocacy efforts on critical issues.

Taiao Research and Monitoring:

- Surface and groundwater interaction and recharge – Ngaruroro Awa.
- Iwi centric river and flood plain management, restoring space for our waters – Ngaruroro and Tukituki.
- Te Kohanga project artificial reef enhancement -Tī kōuka mussel spat ropes.
- Waterway monitoring wananga and support – Whanganui ā Orotū, Heretaunga - Paritua / Karewarewa Streams, Wairoa Awa.
- Pāua monitoring wānanga and support– intertidal survey Waimārama.
- Provision of eDNA kits, which involves the identification of species in waterways throughout Te Matau ā Māui post cyclone.

It is critically important to recognise the reciprocal relationship between policy development and monitoring and research, as the data gathered not only informs better environmental management but also drives policies



# Te Taiao Me Ōna Rawa



that shape future monitoring efforts, ensuring continuous improvement and adaptation.

Currently monitoring and policies make little difference in improving indigenous taiao outcomes.

Hearings, Environment Court, Fast Track and Government processes:

- Heretaunga and Ahuriri Freshwater Catchment Plan advocacy – waterway restoration and protection, water quality and quantity targets and limits.
- Ruataniwha groundwater takes – protection of diminishing groundwater, streams, springs, mauri and mahinga kai.
- Regional Policy amendments and recognition of Hawkes Bay Outstanding waterbodies.
- Supporting Hapū opposition to Maraekakaho Quarry in awa flood plain.
- On-going Consent condition implementation post involvement in relevant hearings and environment court – Gravel extraction Tukituki, Tūtaekurī and Ngaruroro; Wairoa Wastewater; Ravensdown Stormwater and Air discharge.
- Submissions on legislative changes such as the fast-track process, Three Waters reforms, and Resource Management Act (RMA) changes.

This year we held the 13th Annual Kahungunu Fish Hook Summit – charting our Taiao future which, show cased much of the work mentioned above and relevant across our rohe.

Additionally, Ngāti Kahungunu Iwi Inc. has provided advice and support throughout Ngāti Kahungunu on numerous taiao matters ensuring our cultural values and environmental priorities are upheld.

The focus remains on asserting our rangatiratanga and protecting the environment for the well-being of current and future generations. ([www.kahungunu.iwi.nz/environment--natural-resources](http://www.kahungunu.iwi.nz/environment--natural-resources)).

**Ngaio Tiuka and Shade Smith**

# Te Ara Toiora - Pathway to Wellbeing

## Te Ara Toiora Report

In 2001 the Ngāti Kahungunu Iwi Incorporated Board visited all marae in Kahungunu to kōrero with whānau about the future aspirations of the iwi. Information was collated and became the foundation of the Ngāti Kahungunu 25 Year Vision. Over the following 5 years, the Iwi moved quickly into strategic mode and plans were developed to promote the aspirations of the Iwi and enable access to quality health services, quality housing opportunities, quality education, opportunities for employment and cultural development initiatives that would inspire and strengthen whānau wellbeing. In 2007 the Te Ara Toiora Wellbeing Strategy was developed to provide a framework to underpin the 25 year vision and connect the Kahungunu strategies. The vision of Te Ara Toiora is Strong, Vibrant, Healthy Whānau, Hapū & Iwi.

### **The aims of Te Ara Toiora o Ngāti Kahungunu**

- Whānau in Kahungunu will be healthy, vibrant and enjoy a high standard of living.
- Whānau have access to high quality services.
- Active Whānau are a quality resource for wellbeing.
- Whānau have an increased knowledge (Mātauranga) and understanding of wellbeing.
- Whānau utilise seamless services that contribute to whānau wellbeing.
- Whānau have a voice and are given tools to navigate and drive their own wellbeing.

### **Te Tumu Whakahaere o Te Wero (Te Wero)**

Initially Te Tumu Whakahaere o Te Wero was the name of the group of Māori Health providers who came together to form the Kahungunu Violence Strategy hence the name, Te Tumu Whakahaere o Te Wero 'Whakamoe Patu' – lay down your weapons. The group of providers continued to meet and have maintained the shortened name Te Wero. Nowadays Te Wero is known as Kahungunu's health and wellbeing advisory group - a collective made up of health and wellbeing providers from across Hawke's Bay. The services provided by the collective play an important role including care providers, managing homes, health needs and youth support.

### **Whānau Voice**

One of the things that we do well is we listen to and amplify the unfiltered voices of our whānau, to shape our approach and inform partnerships with Crown agencies and Kaupapa Māori service delivery providers. Our commitment to whānau-centricity ensures that our efforts remain focused on the needs, aspirations, and priorities of our people as determined by them. By amplifying whānau voice and partnering with like-minded organisations, we co-create transformative change that honours the mana of our whānau. Programmes like Te Kura, Te Paerewa, Tēnei au Tēnei au, Paiheretia Te Muka Tāngata, Te Ao Mārama, and Te Ara Mātua prioritise whānau needs, driving improvements in wellbeing, economic stability, and resilience.

Over the past year, our Te Ara Toiora and Whai Kāinga, Whai Oranga teams have made significant developments in advancing our goals through targeted programmes across justice, social wellbeing, family harm, and housing.

### **Te Ao Mārama**

We're proud to showcase below some of the most impactful highlights of our mahi.

Empowered by partnership commitments, we're co-creating Te Ao Mārama in Te Matau-a-Māui driving policy reforms to transform whānau experience of the justice system. By working together, we're championing a more just and equitable system, addressing systemic barriers and amplifying whānau voices. This collaborative initiative, brings together whānau, Te Tumu Whakahaere o Te Wero (Te Wero), the Ministry of Justice and the judiciary to achieve significant milestones. This year we have been able to do the following:

- Engage with more than 100 system experienced whānau and kaimahi.
- Collect over 1,000 stories that have informed 15 key insights and 11 priority opportunities for improvement.



# Te Ara Toiora - Pathway to Wellbeing

- Developed a report called the 'Undiluted Voices of Whānau', what enhances collective understanding of whānau experiences in the District and Family Courts, validating insights and improvement priorities, and informing systemic changes to address whānau needs.
- Through our collaborative approach we have ensured the efficient use of resources, leveraging the expertise of multiple agencies.

## Te Ara Mātua

We are pleased to report significant developments in the Te Ara Mātua programme over the past year. In partnership with our whānau, Te Tumuwhakahaere o Te Wero, and Oranga Tamariki, we have completed an iwi-led, co-designed support and care programme for implementation. This milestone marks a crucial step towards our vision of empowering whānau to be strong, healthy and vibrant.

The recent opening of whānau-centered Wānanga hubs in Hastings and Napier is a testament to our commitment to creating independent spaces for whānau and their kaimahi to connect, learn, and grow. These hubs facilitate training and development opportunities for whānau and professionals, fostering a culture of collaboration and collective growth.

However, we are also navigating challenges around government-proposed changes and priorities, including the removal of Section 7AA, which may impact social work practice and our ability to work effectively with whānau. We are working to understand the implications of these changes and ensure that our programme continues to prioritize whānau needs and voices.

Despite these challenges, we are progressing the implementation of key Te Ara Mātua work programmes, including:

- Annual investment planning and commissioning
- Introducing a new model of care
- Early assessment services
- Mokopuna and whānau support towards interdependence

Our aim remains to support mokopuna and whānau to be strong, healthy, and vibrant by investing resources as close to whānau as possible. We are building their capability and capacity to be safe and self-determining, acknowledging their inherent strengths and resilience.

Through Te Ara Mātua, we are redefining the way we support whānau, prioritizing their needs, and amplifying their voices. We remain committed to our partnership with Te Tumuwhakahaere o Te Wero and Oranga Tamariki, working collectively towards a brighter future for our whānau.

## Paiheretia Te Muka Tāngata

Over the past year, Paiheretia Te Muka Tāngata has made significant strides in supporting whānau in Hawkes Bay to remain safe and well in their communities. We acknowledge the invaluable partnership with Te Tumuwhakahaere o Te Wero and their dedicated kaimahi, who have worked tirelessly alongside whānau to deliver comprehensive services.

Our programme has expanded to include early support in the Courts, ensuring timely interventions and connecting individuals with vital resources. A comprehensive three-part evaluation of our first three years has been completed, offering valuable insights for continuous improvement. We look forward to launching the evaluation alongside whānau in the near future, celebrating their journeys and progress.

The evaluation's Social Return on Investment (SROI) component reveals a remarkable return of \$3.72 for every dollar invested in the programme. This outstanding result demonstrates the effectiveness of the whānau-centered approach and the positive impact on whānau.

Building on this success, we have implemented changes and improvements, including enhanced service delivery and strengthened partnerships. Our commitment to whānau-centred care remains unwavering, and we continue to work collaboratively to support service delivery partners to address complex needs and create lasting change.

Notably, the increased investment to extend the programme delivery is a clear demonstration of a vote of confidence in the programme. This additional support will enable us to further amplify our impact and reach more whānau in need.

# Te Ara Toiora - Pathway to Wellbeing

As we move forward, we remain dedicated to supporting whānau aspirations in Hawkes Bay, fostering resilience, and promoting overall well-being. We extend our gratitude to Te Tumuwhakahaere o Te Wero, our team, and the wider community for their unwavering support. Together, we are making a meaningful difference in the lives of whānau.

## Te Kura

Te Kura is a Ngāti Kahungunu initiative aligned with Whāngaia Ngā Pā Harakeke (WNPH), a New Zealand Police program focused on reducing family harm within Māori communities through collaboration with iwi and agencies.

Te Kura has made significant strides in strengthening partnerships with Police, Government agencies, and NGO services across Hawke's Bay and beyond.

Our Te Kura Goals and Objectives:

### Kotahitanga

- Strengthen the Ngāti Kahungunu Iwi and New Zealand Police partnership model
- Foster collaborative efforts between police, iwi, and community organizations for a unified response to family harm
- Promote Te Kura concepts and vision across Hawke's Bay
- Evaluating the impact and outcomes of the programme

### Mahitahi

- Lead process improvements with NGO and Government agency partners
- Coordinate daily hui (meetings) and incorporate an iwi lens for continuous improvement
- Support SAM table participants wellbeing and wairua through karakia
- Collaboration of services for seamless access for whānau to utilise support
- Co-lead Te Ara o Tawhaki steering group

### Ora

- Implement practices reflecting restoration and whānau aspirations
- Prioritise whānau voice through iwi-led mahi
- Develop and deliver training adopting a whānau ora approach
- Incorporate Māori values, principles, and practices to address unique Māori community needs

In December 2023, we launched the Family Safety System (FSS), a secure web-based database designed to support multi-agency collaboration in addressing family harm.

Access to FSS is strictly limited to users who have undergone Police vetting and clearance, ensuring the confidentiality and security of sensitive information.

The information stored in FSS is shared in accordance with the Family Violence Act 2018 to support legitimate family harm multi-agency table business, as outlined in section 20(1) of the Act. The purposes of FSS include:

1. **Risk and Need Assessment:** Contributing to family violence risk or need assessments.
2. **Decision Making and Planning:** Informing decisions and plans related to family violence.
3. **Victim Protection:** Ensuring the safety and protection of victims from family violence.

By leveraging FSS, we aim to enhance interagency collaboration and improve outcomes for individuals and families affected by family violence.

We are excited to announce some recent changes to the Te Kura team. Christopher Karaitiana has been moved into a new role within the Te Ara Matua space, bringing his expertise and experience to a new challenge. Nicosia Webster has stepped into the Te Kura Programme Lead role, building on her previous experience as Te Kura Coordinator. We are looking to recruit more staff to support our team goals.

# Te Ara Toiora - Pathway to Wellbeing

## Whai Kāinga Whai Oranga / Housing

Ngāti Kahungunu Iwi Housing Team is one of four housing prototypes known as Whai Kāinga Whai Oranga across the country. The team lead by Steve Gordon - Housing Manager, Jane Cunningham - Project Lead, and Hannah Kupa-Elliott - Project Assistant, has been actively involved in numerous initiatives aimed at addressing the housing needs of Ngāti Kahungunu Iwi members.

In the aftermath of the recent cyclone, the team was contracted to deliver over 86 serviced and non-serviced cabins to whānau affected by the flooding. These temporary accommodations provided whānau the opportunity to remain on their whenua while repairing their homes at their own pace. Cabins were distributed to the most severely impacted Māori communities, including Omahu, Waiohiki, Porangahau, and others in the region.

Additionally, the team is coordinating critical repairs for a minimum of 13 uninsured or underinsured homes that suffered significant damage due to Cyclone Gabrielle.

The NKII housing team was contracted to project manage the delivery of the project – Utaina Ōmahu for TAS, who are in partnership with Te Piringa Hapū. This consists of the following 11 houses: (3 one-bedroom, 5 two-bedroom, and 3 three-bedroom) along with the associated civil works and infrastructure. NKII expects to complete and hand over the project by the end of October, with TAS assuming responsibility for determining the occupancy of the whare.

The NKII housing team also assumed responsibility for the 17 homes at frame and truss stage from K3's offsite manufacturing facility, providing funding and overseeing their completion. These homes will now join the NKII affordable rental program.

While taking over K3's projects has posed many challenges, the team have navigated these successfully to date and are looking forward to building the capacity of the iwi's affordable housing portfolio.

The following is a list of the housing pipeline we are providing:

- Papakainga
- 34 homes across 9 projects
- Affordable Rentals
- 52 homes across Hawkes Bay. Sites being finalised
- Infrastructure Sites
- 131 infra sites.



Te Ara Mātua Hub opening, July 2024

# Smart Services and Benefits to Members

## OUR TEAM

The Smart Services team is the unit at Ngāti Kahungunu Iwi Incorporated (NKII) that provides corporate services to support the functions of the organisation including the Board. We have a relatively small team that consists of the Receptionist/Administrator – Waiora Kireka; the Membership Registration Database and IT expert – Kerrin Fair; the Event Management, Special Projects and Promotions duo, Danielle Keil and Te Rangi Huata; the Finance Officer – Hine Hape; and the Executive Assistant for our Chief Executive, the Chairman and the Board – Michelle Ferris. My name is Ruth Wong and I am the Director of Smart Services and the Communication Advisor. I feel privileged to work with a great team. Our team keeps the tari functioning on a day-to-day basis. We are like the fuel in the tanker, the water in the plants, the conscience of our people, the heart beat of the tari and like the heart, we work behind the scenes to keep the tari alive. We plan meetings, monitor schedules, answer inquiries, pay the bills, provide advice, seek out opportunities that will benefit our members, communicate and share information, plan events that uplift and encourage whānau wellness and we do this from an open office setting based at 304 Fitzroy Avenue, in Hastings.

## BENEFITS TO MEMBERS

As stated in Chrissies Report, the last 12 months has continued to test the resilience and commitment of the Iwi office and how we do things. With the lack of a dividend from our Assets Holding Company in 2022 and 2023 and a contribution to Governance costs only in 2024, Ngāti Kahungunu Iwi has relied on administrative fees gained through funding and commissioning agreements to support the operations of the tari, including the way we provide benefits to our members. We have had to be more creative and consider doing things differently holding on to what is most important to Ngāti Kahungunu Iwi whānau whānui. In 2024 we restored our sponsorships and educational scholarships. A tripartite relationship agreement with between us, the Māori Education Trust and some tertiary institutions has enabled an increase in funding to recipients. We accepted the challenge to raise funds for our events and we have called on external sources, partnerships, local government and philanthropic grant makers for support, and we were mostly successful.

## SCHOLARSHIP GENERAL RECIPIENTS - \$500 each

Full Name	Tertiary Institution you are attending - Qualification sought
Alexander JW Fanning Heissner	Victoria University of Wellington Te Herenga Waka - Bachelors of Arts
Alice Rose Boyd	University of Otago - Bachelor of Dental Surgery
Ally Evelyn Ataria	Massey University of Wellington - Bachelor of Design Textile Design Major
Amiria Te Awatea Jade Drysdale	University of Waikato - Bachelor of Law, Māori and Indigenous studies
Anahera Arley Whaanga-Smith	Otago University - Bachelor of Health Science.
Ashlee Waikawa	University of Otago - Bachelor of Dental Surgery
Carolina Ti Reihana Clarke-Pailate	Eastern Institute of Technology - Bachelor of Nursing
Chiavanni Mania Mahia Le'Mon	Massey University - PGCert. Planning - Te Ao Maori
Cooper, Robert, Penrose	University of Otago - Bachelor of Law, Bachelor of Commerce
Courtney Louise McGregor	Waipapa Taumata Rau - Bachelor of Medicine & Surgery
Ella Maree Eriksson	Massey University - Bachelor of Science
Emaraina Gabrielle Ratima	Te Pūkenga - EIT Hawkes Bay - Bachelor of Social Work

# Smart Services and Benefits to Members

Full Name	Tertiary Institution you are attending - Qualification sought
Eve Kireka	Te Wānanga O Aotearoa - Bachelor of Māori Art Level 7
Fallon Fowler Hendrie	Victoria University of Wellington - Bachelor of Science (Honours)
Felicia Airini Lawrie	University of Otago - Doctor of Philosophy
Fleur Ihapera Harber	EIT Taradale - Bachelor of Social Work
Gabrielle Kupa	Te Wānanga o Aotearoa- Hamilton Glenview - Master's of Applied Indigenous knowledge
Gerard Fraser Mckeown	University of Otago - Bachelor of Arts and Science
Grayson Ray Scadden	Massey University Wellington - Bachelor of Design with Honours
Haani Rōpine Te Mihinga Huata-Allen	Te Whare Wānanga o Waikato - Doctor of Philosophy
Hayley Chante Smith	University of Otago - Bachelor of Biomedical Science
Hingangaroa Kereama Smith	Massey University - Postgraduate Maori Visual Arts
Jaedyn Duane Douglas Crutchley	University of Otago - Bachelor of Medicine and Bachelor of Surgery (MBChB)
James Aaron Whaanga	University of Otago - Bachelor of Medicine and Surgery
James, Te-O-Tane Taratikitiki, Marshall	Waikato University - Bachelor of Health, Sport and Human Science
Jasmin Heyder	Te Whare Wānanga o Awanuiārangi - Masters of Indigenous Development
Jessica Bird	Te wananga o Aotearoa - Masters of Indigenous Practice Maori
Kahu Jack Hema	University of Otago - Bsci Honours in Genetics
Kaitlyn Ruby Rongomaipāpā Mclean	Te Herenga Waka - Victoria University of Wellington - Bachelor of Arts, Bachelor of Arts with Honours
Karleigh Sullivan Sciascia	Victoria University of Wellington - Bachelor of Bio Medical Science and Health
Kate, Jean, Stockdale	Victoria University of Wellington - Bachelor of Laws, Bachelor of Science
Kauri Matutaera Turangi-Joseph	University of Otago - Bachelor of Dental Surgery
Kereana Beverly Lorraine Naera-Sims	TWOR - Poutuarongo Kaitiakitanga Putaiao
Keri Victoria Ropiha	Otago Polytechnic - Master of Professional Practice
Kiri Waipai Stensness	Te Wānanga o Aotearoa - Masters of Indigenous Knowledge
Laura Payton Gemmell	University of Otago - Doctor of Philosophy
Lucky Junette Hawkins	Otago Polytechnic - Doctor of Professional Practice
Malia Lucy Hema	Te Wānanga o Raukawa - Bachelor of Teaching (Bilingual)
Manaia Hereni Lewis-Wano	University of Waikato - Bachelor of Business Management
Martine Ella Jane Puketapu	University of Auckland Education and Social Work - Diploma in Teaching
Mel Chevelle Harmer Williams Mahe	Te Wananga O Aotearoa - Bachelor of Bicultural social work
Mere Terina Murray-Macgregor	Auckland University of Technology - Bachelor of Arts and Criminal Justice / Bachelor of Laws



# Smart Services and Benefits to Members

Full Name	Tertiary Institution you are attending - Qualification sought
Nic Sinnott	University of Otago - Bachelor of Medicine and Bachelor of Surgery
Ondre Pohonui Arundel Hapuku-Lambert	University of Auckland - Bachelor of Medicine and Bachelor of Surgery
Opal Horsefield-Te Aho	Eastern Institute of Technology - Bachelor of Arts (Māori)
Pita Kaleb Jarrod Roycroft	Harvard University Law School - Master of Laws
Riley Perenara - Siemonek	Universal College of Learning - Bachelor of Nursing
Ruben George Wairau	The University of Otago - Bachelor of Commerce
Sarah Jane Waapu-Kumar	Auckland University Of Technology - Bachelor of Health Science
Sharron Fabish	The University of Auckland, Waipapa Taumata Rau - Doctor of Education (EdD)
Sheena Hawea Waerea	Massey University - Master of Management, Marketing
Sonia Hereni Lewis	Massey University - Postgraduate Diploma in Nursing
Sophie Ariāna Beca	Whitireia - Bachelor of Māori Nursing
Summahr Yanita Wainohu	Waikato Institute of Technology - Bachelor of Physiotherapy
Te Wai Haa Rangi Patricia Biddle-Amoroa	Te Wānanga o Raukawa - Heke Reo Māori - Diploma in Te Reo Māori
Terri Anne Winder	University of Auckland - Master of Urban Design
Terri Crawford	Massey - PhD Fine Arts
Tre Edward Barber	University of Utah - Masters of accounting

## RESEARCH RECIPIENTS - \$5,000 each

Full Name	Tertiary Institution you are attending - Qualification sought
Awatea Moxon	Victoria University of Wellington - PhD
Jaxson Ryan Tautala Hanita	University of Otago - Master's of Science in Geography
Miriama Kathleen Wilson	The University of Auckland - PhD in Chemistry
Psalm Sara Dayna Meha	Lincoln University - Master of Environmental Policy and Management

## SPONSORSHIP RECIPIENTS

Recipient	Activity
Te Kura Kaupapa Māori o Ngāti Kahungunu ki Heretaunga	Secondary School Kapahaka Nationals
Waimarama Marae	Host Kahungunu Hui-ā-iwi
Mangaroa Marae	40th Anniversary
Waipatu Marae	Host Kahungunu Hui-ā-iwi
Te Piringa Hapū	Host Hui Taumata
Michelle Ihaka	World Kickboxing Championships
Angela Bullen	U15 Rugby National League Tournament
Nixon Justin Bryce Hamiora	NZ Maori Rugby League U17 Tournament
Te Kura o Mangateretere	121 Year Anniversary
Te Kura o Te Wananga Whare Tapere o Takitimu	Kura Opening
Te Taiwhenua o Heretaunga	Matariki Living Taonga Awards 2024
Tomohawk Enterprises	Inter Marae Karaoke Comps 2024

# Smart Services and Benefits to Members

Recipient	Activity
Meela Tamati-Herrick	U16 Girls' Hockey Tournament
Anania Tamati-Herrick	U18 Girls' Hockey Tournament
Graecyn Parahi	Fiba Women U17 Basketball World Cup
Haylo Lange	NZ Maori Rugby League Tamariki Tournament
Taylor Weepu	Taylor Weepu - sponsorship toward NZ Maori Rugby Teina Kotiro Tournament
HM Young-	Touch Rugby World Cup
Max Allen	U16 Lower North Island Hockey Tournament
Tamaki Nui A Rua Kaumātua	Kaumātua Event
Waipatu Marae	Host Governor General
Kahungunu Matariki Events	Matariki Events Support
Community Events	Advertising or Inkind Support

## COMMUNICATION

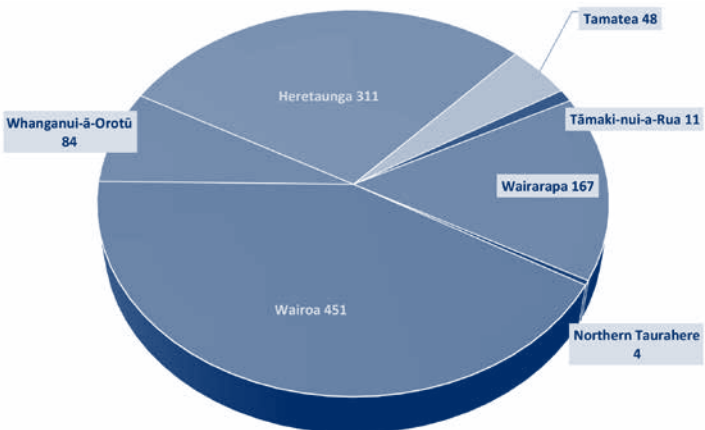
We have continued to keep our iwi informed through the promotion and provision of high-quality communications to and from our whānau. Sharing our collective stories and achievements, hearing lift stories and experiences and connecting with whānau provide important insights and mechanisms that direct our activity and strategic planning of Ngāti Kahungunu Iwi Inc at a Governance and Operational level. The communication platforms we use include our website [www.kahungunu.iwi.nz](http://www.kahungunu.iwi.nz), panui ki te iwi email network, Tihei Kahungunu – our monthly 8 page editorial in Hawke's Bay Today, and our regular posts on our Facebook page.

## REGISTRATION

The iwi registration database has increased by 1078 members during this reporting period, taking our overall total of registered members to 41,361.

- 70% of these new registrations came from Heretaunga and Wairoa Taiwhenua.
- 18% or 7621 registered members have an incorrect address – whanau frequently move without updating their information.
- 4% or 1757 registered members do not have a date of birth & evidently are unable to participate in iwi elections.
- 28% or 11505 registered members requested Iwi membership cards.

### ***New Members by area during 1 July 2023 - 30 June 2024***



# Smart Services and Benefits to Members

## EVENTS

Ngāti Kahungunu Iwi Incorporated strives to produce and sponsor events that strengthens hauoratanga, whānautanga and Kahungunutanga. With our financial status we accepted the challenge to raise funds for our events. We called on external sources, partnerships, local government and philanthropic grant makers for support, and we were mostly successful.

This year a diverse range of events were organised or sponsored by Ngāti Kahungunu Iwi Inc. These events not only celebrated Kahungunu culture and traditions but also promoted community well-being, environmental sustainability, resilience and pride. The continued support by our members to attend these events in their thousands highlights the strength and vibrancy of the Ngāti Kahungunu community to celebrate ourselves, our traditions, wellbeing and cultural connections.

“By Kahungunu, for Kahungunu, for everyone, forever.”

### Waiata Māori Music Awards

The 16th Waiata Māori Music Awards, held in September 2023, celebrated the achievements of Māori musicians across various genres. This prestigious event, hosted at Omahu Marae, Hastings, showcased the rich musical talent within all iwi and provided a platform for emerging artists to gain recognition. The awards night featured live performances, cultural presentations, and honoured the contributions of Māori artists to the music industry. We have just celebrated the 2024, 17th Awards. Below are the recipients of the 2023 Awards.

- Iconic Keeper of Traditions Award, Wetini Mitai-Ngatai
- Iconic Māori Music Composer Award, Whirimako Black
- Radio Airplay Song of the Year in Te Reo Māori. Ka Hao ft Rob Ruha
- Radio Airplay Song of the Year by a Māori Artist, L.A.B
- Best Te Reo Maori Album/Best Song by a Māori artist/Best by a Maori Artist/ Best Māori Songwriter, Tuari Brothers
- Best Māori Pop Album/Best Māori Group, Coterie

### Ngāti Kahungunu Iwi AGM Pa Sports Day at Splash Planet

In November 2023, the Ngāti Kahungunu Iwi AGM Pa Sports Day took place at the popular Splash Planet water theme park in Hastings. Due to financial constraints we cancelled the 9 sports as a temporary measure. Hastings District Council also offered a generous entry concession on a one-off basis. The overcast skies did not deter the whānau and the day turned out to be a great success combining the annual general meeting with a day of whānau fun on 15 attractions including thrilling water slides, go-karts, bumper boats, mini-golf and the popular Fantasyland Express train. The 3 indoor hot pools were packed and around 2,500 whānau members came from all corners of our rohe - Wairarapa, Tamaki nui a Rua, Tamatea, Te Wairoa, Heretaunga and Te Whangau a Orotu.

### IronMāori November, Napier. Attendance 7,500+

The 14th Iron Māori indigenous triathlon, held in December 2023, attracted participants from across the region. These Napier based Aendurance events, promotes health and fitness within the Māori community from mokopuna to kaumatua and they converged on Napier from the four winds. 3500 participants took up the wero (challenge) to swim, cycle, and run individually or in teams, with a strong emphasis on whānau support and community involvement. Founders Heather and Wayne Skipworth handed over the mauri of IronMaori to Te Taiwhenua o Heretaunga on 21st March 2024. The event will take place 1 & 2 November 2024, Ahuriri, Napier.

### Waitangi Day, 6 February, Mitre10 Sportspark, Hastings. Attendance 12,000

Waitangi Day celebrations on 6 February 2024 attracted thousands to Mite10 Sports Park, Hastings. The celebrations highlighted the significance of the Treaty of Waitangi with a wānanga focused on Te Tiriti o Waitangi, political strategies, environment, Te Reo, education,

# Smart Services and Benefits to Members

justice, housing and updates from Hui a Motu called by Kingi Tuheitia at Turangawaewae Marae. The event included Mahons Thrill rides, kai & craft village and a line-up of 15 musicians, bands, kapa haka and cultural groups with national feature artists TJ and Huri.

## **Fish Hook Summit June, Napier. Attendance 200+**

The 13th annual Fish Hook Summit, brought together iwi leaders, environmental experts, and community members to discuss marine conservation, Te Mana o Te Wai, climate change and a futuristic outlook for the earth. 220 registered for the summit theme of “Charting Our Taiao Future”. Keynote speaker Professor Chellie Spiller spoke about Wayfinding Leadership. “True success is succession”. Other speakers included Kate McArthur, Tina Porou, Mike Smith, Marei Apatu, Crystal Pekepo, Katarina Kawana, Katherin Gayle and Wayne Ormsby.

## **Matariki Whakanuia ki Tamaki nui a Rua 7 June 2024 – Attendance 3000+**

Tararua region proudly hosted the first of nine Matariki events in our rohe with perfect weather for the first time in years. A huge variety of kai was on offer for the thousands of locals who came out. Hundreds of local Matariki wrote messages of love, remembrance and hope onto waka maimai aroha lanterns and these were displayed in rows around the arena. The names of the departed were called out during the maumahara ceremony as their names and photos appeared on a large outdoor screen. The fireworks to Māori music was a spectacular finale to a night of festivity, kai and remembrance. “A cracker of a night for the first New Zealand town to kick off Matariki celebrations.”

## **Matariki Hunga Nui Tamatea 14 June – Attendance 3500+**

The weather tested the resilience of the Tamatea community however the whānau still came out in their thousands to support Matariki. All the performing groups chose to carry on with their performances in the rain. Some shared they had practiced for weeks and Matariki was a highlight of their school year and their biggest annual performance. Key moments of the event were calling the names of loved ones, performances, kai and fireworks. Kai vendors were very busy. Julie “All the whanau standing in the rain will appreciate you boys for carrying on in those OTG conditions. Ka rawe koutou.”

## **Matariki Whakanuia ki Te Wairoa 21 June, Wairoa – Attendance 3500+**

Every year Wairoa comes alive with a week-long Matariki festival to appeal to early childhood, kohangareo, kura and kaumatua groups, culminating in a family concert with kai and fireworks. Most of the community kai stalls sold out. A series of evening workshops of art, cooking and tā moko were popular and well attended. We acknowledge the mahi of local organisers, Sara Baird & Esta Wainohu from Wairoa Community Centre, Hine Flood from Wairoa REAP and Austin King from Wairoa District Council.

## **Matariki Kai Hau Kai, Heretaunga 28 June – Attendance 20,000+**

The wet weather did not deter thousands from coming to Matariki in Hastings on the Matariki public holiday. Onsite parking at HB Sportspark filled to capacity within a few hours and long vehicle queues stretched for hundreds of metres into the venue. The main attraction of the event was the food with 35 vendors selling delicious Māori, Pacifica and Asian food. From savoury to sweet, hot and cold there was something for everyone. “Worthwhile waiting to get in. Amazing to see so many people there for Matariki.” “Beautiful way to connect. Proud as. Great kai.”

## **Whānau Marama Light Show, Ātea a Rangi, Napier 23-28 June Attendance 300**

The Marama Light Show at Ātea a Rangi celebrates the Māori New Year with a stunning story-telling light show. Held at Waitangi Regional Park, this outdoor sensory experience shared the stories of the Whānau Marama (Family of Light) and the traditional star compass used by navigators for

# Smart Services and Benefits to Members

voyaging across the Pacific Ocean. One person shared, "The light show was absolutely breathtaking! It was a magical way to learn about Matariki. Highly recommend it to everyone!"

## **Matariki – Whangai I te Haupau – Hau ahi 29 June, Napier beach. Attendance 150**

This pre-dawn ceremony attracted a dedicated group to physically observe the Matariki star cluster, calling out the names of those who passed and making a food offering with the steam rising to the skies as a tribute. Special moments of the ceremony included TK Hawaikirangi using a laser pointer to highlight specific stars in the sky, everyone reciting karakia together, sharing a hangi sitting on the beach and watching the sun rise from the sea. Hirenia "Ka pai watching from Concord Sydney love this mauri awesome. Awhina. "Beautiful. Thank you for sharing." Ngatai "Beautiful tones of te wahine manu tioriori this morning nga mihi."

## **Matariki Mahuika, 29 June, Napier Beach. Attendance 10,000+**

This event captivated those that came with its unique blend of tradition and community spirit. Hundreds of families built their own DIY fires along the beach creating a warm and inviting atmosphere sharing stories, roasting marshmallows and chilling out. Hundreds wrote messages of remembrance, hope and love onto lanterns that were floated on the Manga Pacific Te Toka Tu Moana fountain. These waka maimai aroha lanterns were collected and placed in 7 special fires on the beach as a fitting close to the evening. Joanna said " Absolutely fantastic, sausages around the fire with whānau and friends...love the fire twirling –a great success." Pitsch said, "Beautiful vibes all round".

## **Tirama Matariki Light Trail 5 & 6 July Wairarapa Attendance 3,000+**

This event set up in a circle of light displays, invited visitors to walk back in time to recall memories of the past years in relation to each of the nine Matariki stars. Rain marred the second night however hundreds still came out and many wrote messages of remembrance and love onto waka maimai aroha lanterns and floated in the park canal. Melody "Loved every moment. A must-see event." Gail "Lights and stories moving, wonderful." Deborah "Nga mihi for bringing this to Wairarapa. It's just what we needed."

Nau mai, whakatau mai!

# Matariki Mahuika

Take part in a new Matariki tradition - lighting fires on the beaches all around Aotearoa!

Share the Warmth!

Light a fire at the beach on Saturday 29th June from 5pm. Light your fire, welcome people in, look after each other and the beach.



# Kahungunu Asset Holding Company Ltd Chairman's Report

## *Mikimiki - Greeting*

Ko ngā tapu o te rangi  
Ko ngā tapu tawhito o te rangi  
Ko ngā tapu o te whenua  
I takea mai ai ko te mauri  
Hunu-ā-rau rehutai, Hunu-ā-rau ahuhenua  
Ngā tukemata whānui o Kahungunu  
Tēnei te mihi matangi rau  
Tihei Kahungunu!

## *Moemoeā - Vision*

Empower Ngāti Kahungunu Iwi Incorporated through sustainable economic and commercial success.

## *Rautaki - Mission*

To grow and maximise the assets of Ngāti Kahungunu Iwi Incorporated so the full potential and aspirations of our iwi will be met.

## *Ngā Huaraki - Pathways*

### **Tino rangatiratanga: Independence and Self-determination**

By ensuring our investments contribute to and for the future generations of Ngāti Kahungunu whānau.

### **Taiao ora: Environmental health and wellbeing**

By ensuring that we recognise, and advocate for, principles of Kaitiakitanga in our investment approach to maintain an environmentally healthy footprint

### **Oranga whānau: Strong, vibrant and healthy whanau**

By ensuring our investments will contribute to the health and wellbeing of whānau through employment and training

### **Kahungunutanga: Cultural strength and integrity**

We will ensure that our investments are under-pinned with strong cultural and commercial leadership

### **Ohanga: Economic strength**

We will invest in opportunities that will position Ngāti Kahungunu Iwi Incorporated as a significant leader in the Aotearoa, New Zealand economy

### **Haporitanga: Participating global citizens**

We will identify opportunities that will increase the tribal footprint of Ngāti Kahungunu Iwi Incorporated in the global economy

### **Tuakiritanga: Making our Mark**

By growing our fisheries asset to ensure Ngāti Kahungunu Iwi Incorporated is a significant leader in the seafood sector of Aotearoa, New Zealand.



Shearing quarters Tautane Station

# Kahungunu Asset Holding Company Ltd Chairman's Report



**Mike Devonshire**  
Co-Chair



**Ratahi Cross**  
Co-Chair

*E ngā mana, e ngā reo, e ngā iwi o Ngāti Kahungunu, tēnā koutou katoa*  
It is our privilege as Co-Chairs' of Kahungunu Asset Holding Company Limited (KAHC Ltd) to present to you the report of KAHC Ltd for the 2024 financial year.

In May 2024, we welcomed Ira Wilkson and Jono Bredin to our Board, bringing their expertise, passion, and commitment to our organisation. Their appointments are testament to our company's growth and dedication to excellence, and their contributions will be instrumental in driving our company's success. You can read more about Ira and Jono on page 32.

This last year the Board of KAHC Ltd established an Investment Committee to support our governance and operational excellence. The Investment Committee will complement the mahi of the KAHC Audit and Risk Committee, and will ultimately report to the KAHC Board on investment policies, advisor selection, strategy and portfolio performance to ensure the best possible returns outcome for NKII, the shareholder.

The overall results based on the Audited Financial Statements for KAHC Group for this financial year was a net profit of \$1.25m and Total Comprehensive Income of \$830k. The difference between these two figures is a \$425k loss on revaluation of the Pandora properties.

KAHC Group has achieved its profit through the following;

- \$2.28m trading profit from sales of quota, lease of Tautane Station, lease of Pandora properties and dividend income
- \$645k gain on revaluation of shares, including Fiordland Lobster Company and SALCO
- \$1.30m loss on revaluation of Tautane Station  
\$175k loss that has been allocated to KAHC Limited from Kahutia Limited Partnership
- \$200k loss on the wind up of K3 Developments and Takitimu Seafoods.

The Board's strategic focus on risk management has yielded tangible results, evidenced by strengthened debt metrics. Debt to equity improved by 11 percentage points to 23%, while debt to assets reduced to 19%, down from 25%. These improvements stem from targeted divestment of high-risk investments and strategic debt reduction.

The path hasn't been easy, but we're now seeing the positive results of the bold decisions made over the past two years.

*Nō reira, tēnā koutou katoa*

**Mike Devonshire**  
Co-Chair  
KAHC Limited

**Ratahi Cross**  
Co-Chair  
KAHC Limited

# Kahungunu Asset Holding Company Ltd Chairman's Report

## Nature and Scope

KAHC Ltd holds charitable tax status as it is entirely owned by its shareholder, Ngāti Kahungunu Iwi Incorporated. KAHC Ltd received settlement assets on behalf of Ngāti Kahungunu Iwi Incorporated and these assets are subject to trading restrictions.

The settlement assets are managed in accordance with the Company constitution and the Māori Fisheries Act 2004. The Company also holds non-settlement assets that are not subject to any trading restrictions.

## Financial Performance FY2024

The KAHC Group has recorded:

- a before tax profit of \$1,253,078
- retained earnings of \$23,443,740
- equity of \$76,250,291

## FISHERIES

### Settlement Quota

At the beginning of the FY2024 year, KAHC Ltd holds Settlement Quota across 240 fishery stocks<sup>1</sup>. There has been no Settlement Quota or Income Shares sold, exchanged or acquired during the year.

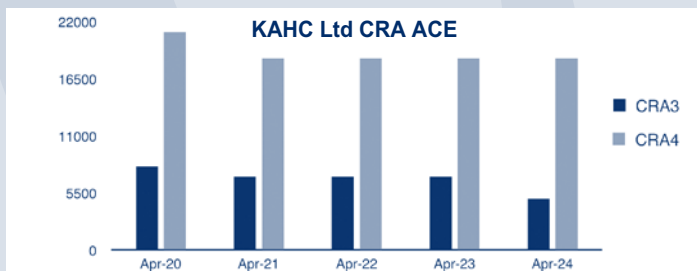
### Annual Catch Entitlement

With the closure of Takitimu Seafoods in April 2023, KAHC Ltd is no longer directly involved in operating fisheries businesses. Instead, the settlement quota is leased to various fishing companies that have long-standing relationships with Ngāti Kahungunu as well as the expertise and track-record in the fishing sector.

KAHC Ltd is one of 42 iwi groups who lease their deepwater Annual Catch Entitlement (ACE) to Sealord under Ngā Tapuwāe o Maui, a collaborative venture returning over 80% of the profits to iwi. Sealord is equally owned by global seafood company Nissui Corporation and Māori through Moana New Zealand.

In the previous fishing year, Ngā Tapuwāe o Maui provided net profits of \$177,000 to KAHC Ltd over and above the ACE value leased to Sealord. The results for the current fishing year will not be known until late November 2024. KAHC Ltd lease the inshore ACE to Moana NZ, the largest, Māori-owned fisheries company in Aotearoa. Being iwi-owned, Moana NZ and KAHC Ltd have highly aligned values. The value of ACE can vary year on year depending on sustainability measures, catchability and market demand.

The koura ACE is leased to Fiordland Lobster Company as per a long-term arrangement since 2016. KAHC Ltd holds quota in areas of CRA3 and CRA4. Both areas have experienced decreases in Total Annual Commercial Catch (TACC) based on sustainability of the catch rates. This has resulted in a decrease of KAHC Ltd koura ACE available to lease. For CRA4 this has been a 12 percent decrease since 2020, CRA 3 has been impacted with a 39% decrease since 2020. See graph below.



Many CRA3 fishers have been reporting much reduced daily catches in Mahia and very poor fishing particularly north of Tolaga Bay. As a result of uncertainty and concern for this fishery, the Minister of Oceans and Fisheries announced a decision to reduce the CRA 3 TACC by 20% for 1 April 2024. Quota holders felt this did not go far enough, and so decided to voluntarily shelve an additional 10% to support the long-term sustainability of this koura fishery. It is estimated that with these reductions, the CRA3 fishery will be back to performing in about five years.

Remaining ACE is leased on a tender basis to various fishing companies including Sea Eagle Scampi, Sea Urchins New Zealand, Maruha Limited and Pelco NZ Limited.

<sup>1</sup> Total Settlement Quota Shares per fishery are available on request.

# Kahungunu Asset Holding Company Ltd Chairman's Report

## Shares

KAHC Ltd currently hold 31,496 shares in Aotearoa Fisheries Limited (AFL, trading as Moana NZ) which equates to a 6.3% holding. These have been recorded at cost, less any accumulated impairment losses. This is a departure from NZ IFRS 9 *Financial Instruments*, which requires these investments to be measured at fair value. Te Ohu Kaimoana have committed to undertake a valuation exercise on behalf of the AFL iwi shareholders during FY2025. This will allow the value to be updated in accordance with NZ IFRS.

The Gross Dividend received from the AFL shares for FY2024 was \$108,000 compared to the previous year of \$367,000. This was significantly lower than expected and is the result of back-to-back extreme weather events, not least of which was Cyclone Gabrielle. These events significantly eroded tio stocks and wild catch ability for ika. Sealord (50% owned by AFL) also faced a number of adversities, including vessel breakdowns and squid harvest at only 24% of planned volume, the latter of which has impacted the entire seafood industry.

As at 30 June 2024, KAHC owned 39,670 shares in Fiordland Lobster Company (FLC). In October 2023, these shares paid a \$2.75 dividend per share. On 20 August 2024, KAHC Ltd purchased 50,000 shares back from Hineuru Holdings Limited, this arrangement was agreed to in 2021. KAHC now owns 89,670 shares in FLC, equating to a 3.26% shareholding.

## Napier Mussels Limited

KAHC Ltd holds ownership of 91% of Napier Mussels Limited, which owns a mussel farming consent off the coast of Waipatiki. There has been no activity on this site in FY2024. We have recently contracted an aquaculture specialist to advise on potential options going forward.

## PROPERTY

### Pandora Road

KAHC Ltd owns two commercial properties on Pandora Road, Ahuriri. 52 Pandora Road (the former Takitimu Seafoods) remains empty. This site is leasehold with Napier City Council, we intend to freehold this site in the medium term so we may realise the long-term potential of this waterfront site. We also own 43 Pandora which is currently leased out to various tenants. The development of that site is also a long-term vision for KAHC Ltd.

The value of the site at 43 Pandora remained the same over the previous 12 months (\$4.56m) and a small uptick was realised in the value of carparks owned in Humber Street, Pandora. However, the property at 52 Pandora decreased in value from \$2.5m to \$2.0m reflecting the upcoming ground rent review in 2026 which has increased market obsolescence in the buildings and the limited market depth valuers are seeing for impaired assets in the current market.

### Tautane Station

KAHC Ltd owns Tautane Station, a 3,500 ha sheep and feed breeding/semi-finishing station situated at Herbertville, 66 kms southeast of Dannevirke. This is now in the sixth year of a lease with Glenheath Farming Company Limited. Tautane was valued by BakerAg as at 30 June 2024 for \$30.5m down from \$31.8m the previous year. The decrease in value relates to the uncertainty of the carbon credit market impacting high country stations' attractiveness to potential forestry investors.

This year we joined forces with Horizons Regional Council and QEII to deer fence 44ha of tawa, titoki and podocarp forest under a QEII covenant. The forest type is a rare and critically endangered eco-system and will also include an adjacent wetland. We hope to formally bless this block in FY2025.

### Kahutia

Kahutia is a forestry production and carbon trading company established in 2019. The partnership with Tangoio South Trustees (5%) and Hineuru Holdings Limited (47.5%) and KAHC Ltd owns a 47.5% share.

There was a total net loss for the year of \$437,000, \$208,000 attributable to KAHC Limited. The loss relates to the market value of carbon (as was last years profit) as opposed to a cash loss.

During the FY2024 Kahutia realised the first carbon credits from the planting back in 2019. Kahutia can now expect to earn annual carbon credits as the forest matures.

### K3

During FY2024, KAHC Ltd resolved to wind down the K3 operation, as Ngāti Kahungunu Iwi Incorporated (NKII) had decided to directly manage the housing builds funded through Whai Kainga, Whai Oranga. NKII also intends to continue the Māori trades training programme that K3 initially started back in 2020.

## FY2023 Audited Result

As advised at the Special General Meeting in September 2024, the FY2023 Annual Report showed figures for unaudited accounts reflecting a KAHC net profit of \$2.3m. On reflection, the auditors decided a different treatment for a Bonus Share issue from AFL (Moana) – this was subsequently backed out (\$3.6m), the Tautane valuation was also included in other gains and losses (\$1m).

# Kahungunu Asset Holding Company Ltd

## Directors

### **Mike Devonshire**

*Co-Chair*

Mike is an experienced leader, mentor and governance professional with a background in institutional banking, corporate finance, infrastructure, property and business leadership.

Mike is also a Chartered Member of the Institute of Directors and has detailed governance experience working with capital-intensive industries, more particularly the construction, geotechnical, property, port and wine processing sectors.

Following an early career in rural property management and investment banking, Mike established his own business consultancy in 2002 and has since worked with a wide range of clients proving transactional, strategic and governance advice.



---

### **Ratahi Cross**

*Co-Chair*

*Ngāti Pahauwera, Rongomaiwahine*

Ratahi is involved in a number of companies that have large investments in the Kahungunu rohe, including his family business that has about \$150 million invested in the horticultural industry from Havelock North across the plains to Fernhill.

Ratahi holds a number of positions on various governance boards with horticulture as his main area of focus. Ratahi has a background in natural science specialising in native flora and fauna, and lectures in Māori history.



---

### **Alex Guilleux**

Alex is of French descent, having grown up in Brittany, France and moving to New Zealand in 2009. After many years at PwC, Alex left PwC in 2019 to become Managing Director Foods and Markets at one of the largest vertically integrated horticulture businesses in New Zealand.

Alex is currently the Managing Partner of Corporate Value Associates (CVA) New Zealand where he provides strategic consultancy services to the horticulture and agriculture sectors.





# Kahungunu Asset Holding Company Ltd

## Directors

### **Bayden Barber**

*Ngāti Kahungunu, Ngāti Tahu and Ngā Puhī*

Bayden resides in Waimārama where he is deeply involved with his community and Waimārama marae. Bayden served two terms on the Hastings District Council and was elected as the Ngāti Kahungunu Iwi Chair in 2022. He currently holds a number of governance roles for local, regional and national organisations including Te Taura Whiri i te Reo Māori and Te Ohu Kaimoana. He has solid business acumen and an informed view on local and national political and social issues. Bayden is well versed in tikanga, Kahungunutanga and is fluent in te reo Māori.



### **Ira Wilkinson**

*Ngāti Porou, Te Atiawa*

Ira has over 20 years' experience providing accounting and business advisory services to a diverse range of sectors including retail, construction, property and portfolio investments, financial services, Iwi and Indigenous businesses.

Ira has expertise with Trusts, Estates and Not-for-Profit organisations. She enjoys working closely with key stakeholders within organisations, to ensure that they make informed decisions for the short and long-term.

As well as being a Chartered Accountant, Ira is a trustee and Deputy Chair of the Māori Education Trust and the Anglican Insurance Board, as well as Treasurer to the New Zealand Māori Council.



### **Jono Bredin**

Jono is a seasoned Chartered Accountant and business leader. He is also an experienced investor.

Prior to moving to Maungawhara with his partner and three children (Ngāti Kahungunu), Jono owned his own accounting firm in Ōtepoti where he was also the CEO and Head of Tax. He acted for a wide range of clients including fisheries and iwi investments. Jono has also held the position of CEO for a national financial services firm.

Outside of his professional endeavours, Jono is both an International Netball Umpire and a New Zealand Rugby Referee. He is also learning te reo Māori.



# Ngāti Kahungunu Iwi Incorporated Summary Financial Statements

FOR THE YEAR ENDED 30TH JUNE 2024

## CONSOLIDATED SUMMARY OF FINANCIAL PERFORMANCE

INCOME	Group		Parent	
	2024	2023	2024	2023
Administration and Other Operating Revenue	30,547,058	16,137,349	29,577,827	11,963,570
Hī Ika Revenue	4,139,749	3,421,268	-00	-00
Dividend Revenue	217,022	309,488	-00	400,000
Sales	377	2,887	-00	-00
<b>TOTAL REVENUE</b>	<b>34,904,205</b>	<b>19,870,993</b>	<b>29,577,827</b>	<b>12,363,570</b>
<b>EXPENSES</b>				
Administration and Operating	3,205,364	2,928,349	1,632,914	1,220,241
Hauora	494,197	365,231	494,197	365,231
Mauri Ora	9,170,091	10,030,189	9,170,091	10,030,189
Governance	950,121	760,154	594,025	500,675
Finance Costs	974,706	641,191	-00	-00
Kainga Subsidies	12,571,426	-00	12,571,426	-00
Cost of Goods Sold	130,681	2,850,595	-00	-00
Impairment	-00	143,945	-00	-00
<b>TOTAL EXPENSES</b>	<b>27,496,587</b>	<b>17,719,654</b>	<b>24,462,653</b>	<b>12,116,336</b>
Net gain/(loss) on financial assets measured at Fair value	646,700	139,498	-00	-00
Share of surplus/(deficit) - Associates & Joint Ventures	(1,134)	65,720	-00	-00
Loss from discontinued operations	(198,303)	(4,448,660)		
<b>NET SURPLUS (DEFICIT) FOR THE YEAR</b>	<b>7,854,880</b>	<b>(2,092,104)</b>	<b>5,115,174</b>	<b>247,234</b>

## Consolidated Summary of Statements of Movements in Equity

EQUITY				
Opening Balances as at 1 July	57,956,977	60,072,131	706,042	481,858
Net Surplus (Deficit) for the year	7,854,880	(2,092,104)	5,115,174	247,234
Overseas tax credits forfeited	(69,683)	-00	-00	-00
Contributions from (Contributions to) Owners	(9,150)	(23,050)	(9,150)	(23,050)
<b>TOTAL EQUITY</b>	<b>65,733,025</b>	<b>57,956,977</b>	<b>5,812,066</b>	<b>706,042</b>

## Consolidated Summary Financial Position

ASSETS				
Total Current Assets	20,878,296	23,350,977	17,584,300	17,460,545
Total Non-Current Assets	77,823,985	72,637,087	7,190,591	2,638,037
<b>TOTAL ASSETS</b>	<b>98,702,281</b>	<b>95,988,064</b>	<b>24,774,891</b>	<b>20,098,582</b>
LIABILITIES				
Total Current Liabilities	26,069,257	34,031,087	18,962,826	19,392,542
Total Non-Current Liabilities	6,900,000	4,000,000	-00	-00
<b>TOTAL LIABILITIES</b>	<b>32,969,256</b>	<b>38,031,087</b>	<b>18,962,826</b>	<b>19,392,542</b>
<b>TOTAL EQUITY</b>	<b>65,733,025</b>	<b>57,956,977</b>	<b>5,812,066</b>	<b>706,042</b>
<b>TOTAL EQUITY &amp; LIABILITIES AS AT 30 JUNE</b>	<b>98,702,281</b>	<b>95,988,064</b>	<b>24,774,891</b>	<b>20,098,582</b>

# Ngāti Kahungunu Iwi Incorporated Summary Financial Statements

FOR THE YEAR ENDED 30TH JUNE 2024

## To the Members of Ngāti Kahungunu Iwi Incorporated (NKII).

This year NKII is unable to meet our constitutional responsibility to produce a complete annual report with a copy of the full financial statements in time for viewing within 20-business days of the Annual General Meeting (AGM).

We present to you in this Annual Report a summary of the financial information drawn from the unaudited consolidated financial statements of NKII.

Crowe Auditors have assured us that the full audited general purpose financial statements will be made available before the NKII AGM which takes place on Saturday 23 November 2024.

Each tribal member is entitled to obtain a copy of the full financial statements once they are available. Requests should be made to the Ngāti Kahungunu Iwi Incorporated Director of Smart Services, Ruth Wong – Email: [ruth@kahungunu.iwi.nz](mailto:ruth@kahungunu.iwi.nz) Phone: (06) 876-2718 OR toll free (0800) 524 864.



**Bayden Barber**  
Ngāti Kahungunu Iwi Incorporated  
Chairman



**Mike Devonshire**  
KAHC Limited  
Co-Chair



**Ratahi Cross**  
KAHC Limited  
Co-Chair



**Ngāti Kahungunu Iwi**  
INCORPORATED

# Annual Plan 2024-2025

## VISION STATEMENT

“Kahungunu – ki te whaiao, ki te ao mārama”  
“Achieving excellence in all areas of our lives”

---

## MISSION STATEMENT

“Kia maumahara ki te mana āhua ake o Ngāti Kahungunu”  
“Uphold the absolute uniqueness of the living breath of Kahungunu  
and enhance the mana and well-being of Ngāti Kahungunu Iwi”

---

## STRATEGIC OBJECTIVES

Ngāti Kahungunu – Culturally Strong  
Ngāti Kahungunu – Healthy and Vibrant  
Ngāti Kahungunu – Economically Strong  
Ngāti Kahungunu – Global Citizens  
Ngāti Kahungunu – Self Determined  
Ngāti Kahungunu – Healthy Environment  
Ngāti Kahungunu – Making our Mark

# Annual Plan

Ngāti Kahungunu Iwi Incorporated (NKII) recognises the need to review its objectives and align its strategies with the needs of whānau & hapū.

In January 2024 the NKII Board reviewed the 2023-2024 Annual plan to evaluate what we have achieved and carefully assess the best way to drive the organisation forward into the future. The Board identifies the importance of remaining relevant with the current environment and ensuring that our efforts contribute to our 25year vision.

## **The Board Priorities are:**

- Housing & Home Ownership, Employment, Taiao, Te Reo Māori and Education

## **The iwi strategies are:**

- He Mahere Rautaki Hai Haumanu I Te Reo O Ngāti Kahungunu / Kahungunu, kia eke - The Revitalization of Te Reo o Ngāti Kahungunu;
- Kahungunu Ki Uta, Kahungunu Ki Tai - Marine and Freshwater Fisheries Strategic Plan; and
- Te Ara Toiora O Ngāti Kahungunu, the Kahungunu Wellbeing Strategy.

The Ngāti Kahungunu Iwi Incorporated Annual Plan describes the key objectives for the 2024-2025 year. These objectives are based on the iwi's seven pou that make up the 25 year vision (2001-2026) (1) Economically Strong, (2) Participating Citizens of the World, (3) Tinorangatiratanga, (4) Making our Mark, (5) Strong, Healthy, Vibrant whānau, hapū, marae, (6) Culturally Strong and (7) Protecting our Environment.

The objective of this plan is to achieve the organisations mission which is to enhance the mana and wellbeing of Ngāti Kahungunu.

---

## **KAHUNGUNU, KIA EKE! STRATEGIC PLAN FOR THE REVITALISATION OF TE REO MĀORI WITHIN NGĀTI KAHUNGUNU**

---

- Implement the Ngāti Kahungunu education strategy;
- Plan, lead and manage the Ngāti Kahungunu Matauranga Symposium;
- Acknowledge Kahungunu Mātauranga leaders;
- Nurture understanding by sharing the rich tapestry of Kahungunu knowledge, wisdom, and perspectives from iwi leaders; and
- Keep our iwi members informed.



---

## NGĀTI KAHUNGUNU NATURAL RESOURCES & ENVIRONMENT KAHUNGUNU KI UTA, KAHUNGUNU KI TAI – MARINE AND FRESHWATER STRATEGIC PLAN

---

- Advocate for Ngāti Kahungunu objectives and values to be incorporated into natural resources decision making and policy developed by local, regional and central government;
- Support hapū to progress hapū management plans to enhance their role as Kaitiaki of the natural resources;
- Develop quality relationships with organisations to assist us to achieve our natural resource objectives which help to build the capacity and capabilities of our people;
- Plan, lead and manage the Fish Hook Summit to give Kahungunu whānau, hapū the opportunity to report their developments to the iwi and to engage with and learn from other kaitiaki in the rohe;
- Provide high level submissions to affect government policy change that lines up with the values of Ngāti Kahungunu iwi; and
- Keep our iwi members informed.

---

## TE ARA TOIORA O NGĀTI KAHUNGUNU KAHUNGUNU WELLBEING STRATEGY

---

- Continue to meet with Te Tumu Whakahaere o Te Wero advocacy group to determine the health and well-being needs of our people;
- Strengthen and consolidate strategic relationships with key central and local government agencies to facilitate and increase effective provision that contributes to the achievement of strong, healthy, vibrant whānau. These agencies include Oranga Tamariki, Corrections, Justice, Housing, Ministry of Education, Ministry of Social Development and Employment agencies;
- Fill the Director of Te Ara Toiora vacancy to direct, manage and monitor these aspirations; and
- Keep our iwi members informed.

# Annual Plan

---

## NGĀ POU TAUNAKI - SMART SERVICES

---

- Increase the vibrancy and wellbeing of Kahungunu whānau through events by organising and managing Waitangi Day, Matariki events, and the AGM Pā Sports;
- Maintain the iwi registration database and update incorrect information; Increase the opportunity for Taiwhenua administration of the SQL Database online. Look at ways to allow online updating by individual members;
- Build networks with organisations and seek smarter and more innovative ways to deliver benefits to members;
- Continue to provide benefits to members including scholarships, sponsorships, pātaka and other free or heavily discounted services;
- Provide high level secretarial administration services and office systems and encourage paperless, eco-friendly options;
- Improve on our standard processes and implement policies;
- Regularly communicate with whānau through online website, Panui ki te iwi email, facebook, frequent visits to the Taiwhenua and Taurahere where possible, to inform and keep whānau abreast of iwi activities and opportunities for whānau hapū and iwi development;
- Profile Success, Celebrate Kahungunutanga in all forms and at all levels. Increase our media releases of Kahungunu achievements;
- Highlight the iwi's key messages and put them in all communication formats including email signatures, website, and all pertinent communications;
- Use te reo Māori in all communications; and
- Record modern Kahungunu history for future generations.

---

## NGĀ TŪHONOHONOTANGA - POLITICAL

---

- Strengthen our relationship with the hapū claimant groups within the Ngāti Kahungunu rohe;
- Improve Kahungunu representation on local and regional councils;
- Influence policy developed by government agencies, local and regional councils;
- Monitor the performance of these entities based on Kahungunu criteria;
- Lead the kaupapa of KOTAHITANGA, uniting our people to understand and cope with changes, in this environment of change;
- Hold the triennial iwi board elections by the end of April 2025; and
- Keep our iwi members informed.

---

## TE WHAKATIPU ŌHANGA - ECONOMIC DEVELOPMENT

---

- Develop and progress the economic status of Kahungunu whānau, hapū, iwi by continuing to work with our iwi partners to progress and implement the Ngāti Kahungunu Economic Development Strategy; and
- Keep our iwi members informed.

# AGM Agenda

**Ngāti Kahungunu Iwi Incorporated**  
**Annual General Meeting**  
**23 November 2024, 9am**  
**Splash Planet, Grove Road, Hastings**

---

## **AGENDA**

Mihimihi  
Himene  
Karakia  
Apologies  
Maumahara  
Previous Minutes  
Chairman's Report  
Kahungunu Asset Holding Company Report  
Audited Financials  
Re-appoint Auditor  
Annual Plan 2024-2025  
NKII Triennial Elections 2025  
General Business  
Himene  
Karakia

**Live Streamed:** The Annual General Meeting will be live streamed on our iwi facebook page

<https://www.facebook.com/kahungunu/>

## **KOTAHITANGA**





# Ngāti Kahungunu ELECTIONS 2025

**The Ngāti Kahungunu Triennial  
Elections take place 24 April 2025**



## **KOTAHITANGA**

**Kotahitanga starts with me  
My vote counts  
My voice matters**

[www.kahungunu.iwi.nz/nkiiboardelection2025](http://www.kahungunu.iwi.nz/nkiiboardelection2025)





# Kahungunu WĀNĀNGA







**Ngāti Kahungunu Iwi**  
INCORPORATED

TAIKURA HOUSE 304 FITZROY AVENUE, HASTINGS 4122  
P.O BOX 2406, HASTINGS 4156, HAWKE'S BAY, NEW ZEALAND  
PHONE: TOLL FREE 0800 KAHUNGUNU (524 864)  
EMAIL: [panui@kahungunu.iwi.nz](mailto:panui@kahungunu.iwi.nz) WEBSITE: [www.kahungunu.iwi.nz](http://www.kahungunu.iwi.nz)



**AGM 23 NOVEMBER**  
**9AM SPLASH PLANET, HASTINGS**