

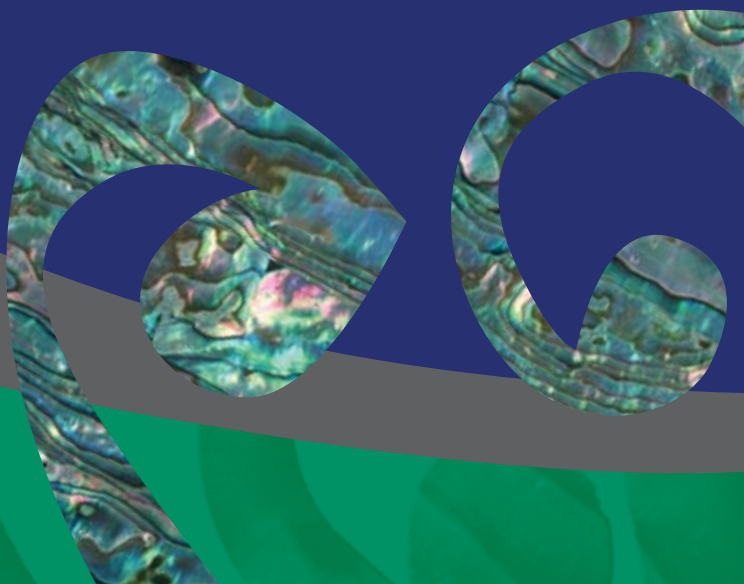
# Hoea rā



**Ngāti Kahungunu Iwi**  
INCORPORATED

## Annual Report 2011 - 2012

Published November 2012



# Table of Contents

	Page
Purpose, Vision & Mission	1
Chairperson's Report	2
Chief Executive's Statement	3
Board Members 2011-2012	4
Board Member Statements	4
Staff Members 2011-2012	9
Ngāti Kahungunu Iwi Incorporated Organisation Structure	10
Culturally Strong	11
Fisheries and Environment	13
Strong, Vibrant, Healthy Whānau	15
Benefits to Members	17
Kahungunu Asset Holding Company Report	22
Financial Statements	25
Audit Report	33
Annual Plan 2012-2013	34
AGM Agenda	40



Picture of Dr Rose Pere with the Tahitians at the Takitimu Festival held at the Hawke's Bay Opera House 2011.

# Purpose, Vision & Mission

Ngāti Kahungunu Iwi Incorporated, with the mandate to represent the people of Ngāti Kahungunu, is the governing body for all aspects of Ngāti Kahungunu Iwi development.

The purpose of Ngāti Kahungunu Iwi Incorporated is to:

- Promote or assist the education of Ngāti Kahungunu Iwi;
- Promote the custody and preservation of the beliefs, customs and language of Ngāti Kahungunu Iwi;
- Promote the social and economic welfare advancement and vocational training of Ngāti Kahungunu Iwi;
- Promote personal, whānau and community health and wellbeing and raise the living standards of Ngāti Kahungunu Iwi;
- Promote high quality communications to and for the benefit of the members of Ngāti Kahungunu Iwi.

## *Strategic Objectives*

In September 2001 consultation with whānau throughout the rohe of Kahungunu occurred. Whānau shared their views, aspirations and desires which helped shape the development of a vision to guide Ngāti Kahungunu into the future. The vision, known as Kahungunu 2026, outlined the vision and mission statements and identified seven strategic objectives to focus on. The Ngāti Kahungunu Iwi Incorporated planning framework continues to outline priorities, activities and desired outcomes that link directly to the strategic objectives within the Kahungunu 2026 vision.

The seven strategic objectives are:

- Culturally Strong;
- Healthy and Vibrant Whānau;
- Economically Strong;
- Informed and Participating Citizens in the World;
- Independent and Self Determined;
- Healthy, Thriving and Sustainable Environment
- Making our Mark

## *Vision Statement*

“Kahungunu - ki te whaiao, ki te ao mārama”

Achieving excellence in all areas of our lives

## *Mission Statement*

Kia maumahara ki te mana āhua ake o Ngāti Kahungunu

Uphold the absolute uniqueness of the living breath of Kahungunu

“To enhance the mana and well-being of Ngāti Kahungunu Iwi”

## *Reporting*

Ngāti Kahungunu Iwi Incorporated has an obligation to provide an ‘Annual Report’ for its membership to account for the previous financial year 1 July 2011 – 30 June 2012. This document provides a summary report against the objectives set out in the 2011-2012 Annual Plan. It includes steps taken to increase the registration database and gives an overview of the organisation’s performance, including changes in the value of its assets, profit distribution and the annual audited financial report.

# Chairperson's Report

Tihei Kahungunu!

Nau mai! Haere mai ki tēnei Pūrongo-ā-tau mō te tau 2011-12. Titiro mai ki ngā kōrero horopaki i roto i te pānui nei ka kite ai koe i te tini o ngā mahi me te mahi pono a Te Poari Matua me tōna Tari, tae atu ki ōna ringa raupā me ōna ringa rauhi. E te iwi e, whakarongo mai, titiro mai.



Ka tika kia mihi ki runga, mauri ora ki te rangi – Takitimu.  
Kia mihi ki raro, mauri ora ki te whenua – Kahungunu.  
Mauri ora ki a tātau katoa.

Ahakoia ngā wero me ngā mānukanuka e mahora ake nei i te ao, ngā mahere me ngā āwangawanga i waenganui i tēnei motu o Aotearoa nei e pā ana ki te ohanga nui o tēnā, o tēnā o ngā motu nui, ka haere tēnei iwi i runga i te huarahi tika kia piri ki tērā mahere i whāriki mai i tērā atu tau. Kua toro atu a NKII ki ōna taiwhenua me ngā taurahere, ki ōna hapū me ōna whānau, tae noa ki ana mokopuna, ko rātau ngā uri whānui o Ngāti Kahungunu e paratī ake nei ki wīwī, ki wāwā me te hau kāinga nei, ngā ahikā roa. Ngā whakaharahara me ngā whakahirahira o ēnei momo mahi kua ruiruia mai ki roto ki tēnei pūrongo. Titiro mai!

Nā te kōrero nei a tēnā, a tēnā o ngā pou ārahi o te iwi i roto i te pūrongo-ā-tau nei ka mārama tātau i ngā mahi rehe i roto i te tari nei. Kāore e mutu ngā mahi, kāore e mutu ngā mihi.

E toku hinengaro anō, he wā kāinga e hokia ana mai, ki ngā rau murimuri aroha. Looking over our past year of activities and events, it brings back many honeyed memories, but like dealing with beehives and bees, it hasn't been without its stings.

We were challenged economically and financially due to the global meltdown and uncertainties in the economy. We've had to cut our cloth to match, but we have still undertaken our responsibilities with the zest and the vim from our creative pool of talent. I acknowledge all the community activities through whānau hapū, roopu, taiwhenua and taurahere that are stacking up the Kahungunu estate of texture and colour. I also acknowledge the leaders in all of those arenas. During this period the iwi hosted the Takitimu Festival which is growing as an international occasion with guests from far flung countries and sectors presenting themselves and the potential to work with Kahungunu. We celebrated the victory of the All Blacks winning the World Cup where Kahungunu was represented by four players, the most from any one tribe. We selected our representatives to go to Te Matatini at an exceptional event held on Waitangi Day at the Hawke's Bay Regional Sports Park. We held our annual internal Kura reo at Mahia and were fabulously hosted by Rongomaiwahine at Tuahuru Marae.

I am pleased to report that there has been a steady increase in equity due to the vigilant efforts of the Asset Holding Company, working in conjunction with our own team.

The challenges ahead include the natural tension of kotahitanga as an iwi and hapū rangatiratanga which are at two ends of the cultural spectrum. We have evolved effective modelling in the past and will continue to do it in the future without major upheavals. But the whānau must be the key to a strong hapū which is the foundation of a strong iwi.

We have the means within ourselves to achieve whatever we aspire to.

He kai kei aku ringa,  
Aku nui, aku rahi, aku iti!  
Ki te whai ao, ki te ao mārama!  
Haumī e, hui e, tāiki e!

**Ngahiwi Tomoana**  
Chairman

# Chief Executive's Statement

Ngāti Kahungunu, tēnā rā tātau katoa, Tuatahi rā, e mihi ana ki ō tātau mate tuatini kua tangihia i roto i te tau kua hori ake nei. Tukuna rātau kia moe i te wahangūtanga o te tangata, otirā, hoki mai ki a tātau te hunga ora, tēnā tātau katoa. E te iwi – kaumātua mai, pakeke mai, tamariki mai, kōhungahunga mai, kia ora huihui mai tātau.



On behalf of Ngāti Kahungunu Lwi Incorporated (NKIL) I'm pleased to present to our members the 2011-12 Annual Report.

Ngāti Kahungunu Lwi Incorporated's (NKIL) operating platform continues to grow from strength to strength, and this year has been no different. The three directorates – Te Reo, Tikanga & Matauranga, Lwi Fisheries and Environment and Support Services established over 3 years ago continues to punch above its weight in terms of delivery, relevance of work, and visibility amongst our community, across our rohe. This year the Board added a fourth Directorate - Te Ara Toiora (Wellbeing) which continues this trend through the establishment of the Tobacco free Action Group (TAG), Rongoā Revitalisation Roopu, Te Tumu Whakahaere o te Wero (Violence free), and the Māori Relationship Board for the Hawke's Bay District Health Board.

You can read more about the amazing work each Directorate has achieved over the last 12 months further in this report.

Financially NKIL ended the year with an operating deficit of \$92,063. Two major contributing factors led to this result – a drastic drop in our estimated income and an increase in our expenditure. Measures are in place to ensure this performance is not repeated through a stronger emphasis on sourcing new streams of income and a cost-savings review currently underway across all three Lwi entities.

Congratulations to the Kahungunu Asset Holding Company (KAHC) for another year of stellar performance resulting in a consolidated net surplus of \$2,104,578 taking our closing equity from \$56,282,207 to \$59,646,630.

In closing I wish to acknowledge our Chair, Ngahiwi Tomoana and Kaumātua, Haami Hilton for their leadership and ongoing support of the office. To the staff thank you for your commitment and hilarious humour over the year - it has been a privilege and honour working with you all.

Kia tau iho rā ngā manaakitanga a te wāhi ngaro ki runga, ki tēnā, ki tēnā, ki tēnā o koutou e noho mai rā i ō koutou kāinga maha.

Hai konā i roto i ngā mihi nā

A handwritten signature in black ink, appearing to read 'Meka Whaitiri'.

**Meka Whaitiri**  
Chief Executive

# Board Members 2011-2012

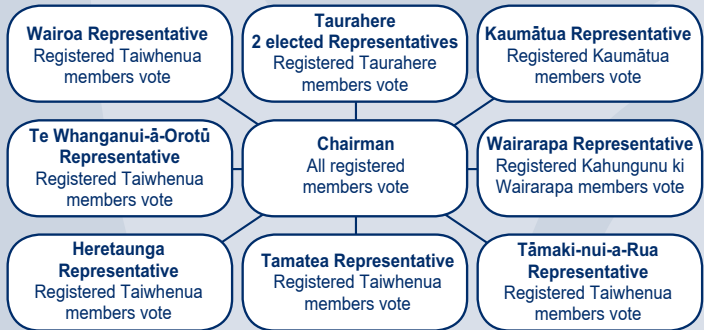
## The Board

The Ngāti Kahungunu Iwi Incorporated Board is the elected authority for Ngāti Kahungunu (Population 59,946), and is made up of ten members elected or appointed through a process of integrity in accordance with the Ngāti Kahungunu Iwi Incorporated constitution. There is one elected member from each of the six Taiwhenua / rohe, one Kaumātua, two elected members representing the five Taurahere, and the Chairman.

The Board governs the business and affairs of the organisation and ensures its direction aligns to the vision and values of the iwi. Board meetings are open to the wider iwi and are held on a bi-monthly basis in several venues throughout the Kahungunu rohe to allow whānau the opportunity to attend the meetings. A summary of the minutes of these meetings are sent out through our iwi networks and posted on the iwi website after each meeting. [www.kahungunu.iwi.nz](http://www.kahungunu.iwi.nz)

The next triennial election will take place in April 2013. Marae and Taiwhenua elections are currently taking place to align with this iwi election. Kaumātua representatives are nominated from an open pool of eligible members 60 years and over. The Taiwhenua/Rohe/Taurahere and Chair positions can be nominated from eligible members who serve on those respective Boards at the time nominations open. For more information about the election, contact our iwi office.

## The Ngāti Kahungunu Iwi Incorporated Board Representation Flow Chart



## Board Member Statements



Haami Hilton

Mauri ora ki te rangi,  
Mauri ora ki te whenua,  
Mauri ora ki ngā tāngata katoa,  
Tihei Kahungunu.

Anei rā taku ripoata mō te tau kua pahure ake nei e tukuna atu ana kia koutou mai i tō tātau poari o Ngāti Kahungunu. Nō reira he mihi nui tēnei ki a koutou. Huri noa ki tō tatau iwi whānui o Ngāti Kahungunu puta noa ki te motu.

E mihi kau ake ana ki ngā tini aituā o te tau tae noa mai ki tēnei rā. Kua mene tonu rātau ki te pō, e ngā mate, haere, haere, haere. Moe mai rā koutou i roto i te ariki.

# Board Member Statements

During the year we accomplished a great deal of high profile agendas throughout the motu as well as at home in Ngāti Kahungunu. Kahungunu whānau have attended the Koroneihana celebrations and continue to strengthen our ties with the Kīngitanga. We supported and co-hosted the second Takitimu Festival that drew in hundreds of whānau from around the motu and abroad from the Pacific Islands. Early this year the board and staff attended a week long Kura Reo wānanga at Tuahuru marae in Mahia which helped to build the ties within our own working structure. I believe that as an iwi, we have grown from strength to strength as we have continued to see the needs of our people and meet them, most of the time without much notice, we have had to move quickly and discern the best way forward. I have enjoyed building on the strength of our Taumata who have continued to guide the cultural decisions within the iwi to ensure they are consistent with Kahungunu kawa and tikanga. This is my report.

Nō reira, e rau rangatira mā, koinei taku nei mihi ki a koutou e te iwi whānui me te inoi mā te atua kaha rawa koutou, otirā, tātau katoa e manaaki, e tiaki i ngā wā katoa.

## **Haami Hilton Kaumātua**

.....

This year has seen an increase of interest from whānau wanting to learn te reo Māori. Waiata wānanga have taken place on a weekly basis with a good turnout of whānau wanting to join in and learn new waiata. We have been practicing at the St Joseph's Primary school marae every Wednesday and we have participated in community events to showcase our talents and recruit more interest from other whānau in the community. In the past year we have successfully hosted 2 Matariki events and the inaugural Rugby Haka Hangi Festival. A committed and very loyal team of event coordinators has made this work an enjoyable task. Our Taiwhenua Board has undergone governance training to improve our leadership skills. We have two new representatives on the board, Brian Te Huki from Whiti Te Ra Marae and Te Amokura Gaffey for Te Kōhanga Whakawhaiti Marae (Pahiatua). I am pleased to present this report on behalf of Tāmaki-nui-a-Rua and wish you all a wonderful and safe season ahead with you whānau.



**Hayden Hape**

## **Hayden Hape Tāmaki-nui-a-Rua Taiwhenua Representative**



**Bill Hamilton**

Over the year the Ngāti Kahungunu ki Te Whanganui-a-Tara have held Tīhei Kahungunu wānanga which has drawn a good attendance of keen Kahungunu whānau. I would like to thank the Ngāti Kahungunu Director of Te Reo and Tikanga Jeremy MacLeod for his contributions and support with our wānanga. It was also great to have people like Piri Sciascia, Huhana Clark and Te Taite Cooper in leadership positions. Our AGM was held recently and a new Board was elected. There are 11 very talented members on our Board who are very capable of leading our Taurahere into a bright future.

## **Bill Hamilton Taurahere Representative**

# Board Member Statements



**Robert Ropiha**

Over the last 12 months Tamatea Taiwhenua has had a few good projects going on behind the scenes with Dr Benita Wakefield leading the mahi on water issues. Morry Black has also been very supportive with the Taiwhenua in his capacity as the iwi environmental guru. Last November 2011 Ngāti Kahungunu and Sport Hawke's Bay hosted the Ngāti Kahungunu Sports Awards in Waipukurau and this year saw the iwi host the prestigious event quite capably under the direction of the iwi event manager Te Rangi Huata and I believe that it was the best Kahungunu Sports Awards event we have had in years. Last year Te Poho o Kahungunu ki Porangahau celebrated its 100th year anniversary which drew a great deal of whānau home to a special occasion. In April this year Tamatea hosted the 28th Māori Battalion celebrations for ANZAC Day at Porangahau. The last time they came to Porangahau was in 1993, so that was nice to see them return again after all those years. These are some of the highlights of the year for Tamatea Taiwhenua. I am aware that the iwi elections are coming up again in April 2013. I am pleased to have represented Tamatea on the Ngāti Kahungunu Iwi Incorporated Board for another three year term and to be able to report the success of our Taiwhenua.

## **Robert Ropiha Tamatea Taiwhenua Representative**

The learning of Kahungunu waiata and whakapapa has been a highlight for us this year. Whilst the younger generation on our committee are keen to hold fun activities, they too have enjoyed the waiata sessions and whānau linking. We are keen to bring our Kahungunu whānau to activities so they can have more of an input in the planning of our iwi future. As a Ngāti Kahungunu Iwi Incorporated Board member, I was invited to be on the Ngāti Kahungunu Iwi Tobacco Free Action Group. Although my job seems minimal, I have enjoyed being a part of the group and I have seen how things have progressed towards a positive outcome. For this purpose I would like to commend the Ngāti Kahungunu Iwi Incorporated management team for continuing to monitor and maintain Ngāti Kahungunu Iwi's strategy to become a Tobacco Free iwi. The work involved in this kind of stance is not taken lightly and I appreciate the efforts of all involved. I would also like to acknowledge our smokefree iwi Board. We have made a stance and we are leading the way.

Tēnā koutou, tēnā koutou, tēnā koutou katoa,

## **Owen Purcell Taurahere Representative**



**Owen Purcell**

.....



# Board Member Statements

Tēnei te mihi mahana ki a koutou ngā uri o Kahungunu.

Over the last 3 years strengthening relationships with key stake holders and building Taiwhenua capacity have been two of our major objectives. This mahi has contributed substantially towards the Taiwhenua's stable position today. The Taiwhenua however is still a small operation which employs two staff members with a large pool of voluntary workers who are happy to be called upon from time to time. Strategic governance training and succession planning have been the focus on our Board all year. This has allowed the Board to revise and advance its growth strategy ahead of the next Taiwhenua election in January 2013.

I believe that the Taiwhenua has restored its mana and its credibility with all of its key stakeholders. This brings assurance to a bright future for our whānau, hapū, Taiwhenua.

I would like to take this opportunity to acknowledge the work of our staff, our Board and our voluntary worker's without whom we could not operate.

Nō reira, tēnā koutou, tēnā koutou, tēnā koutou katoa

## **Roy Pewhairangi**

### **Te Taiwhenua O Te Whanganui-a-Orotū Representative**



**Roy Pewhairangi**

Recently we completed the Election process for our marae representatives on the Te Haaro Board. These elections marked a significant change to our system of trustee elections, with all trustee board positions now opened up to election every three years. This replaced the rolling system in which some seats came up for election each year. The rolling system has worked throughout the years to ensure ongoing experience on the Board at all times. This new change could be seen as a risk to the organization with a totally new board of trustees coming on Board at once. However I assure you, that these are good times and I believe that our people are equipped and ready to lead. Seventeen (17) Marae are represented on Te Haaro Board of Trustees through natural Marae clusters. Te Haaro Board of Trustees continues to provide the visionary strategic leadership for Heretaunga that reflects the needs and aspirations of Marae/ Hapū, Whānau and Communities. Te Haaro also ensures Te Taiwhenua o Heretaunga is high performing, compliant and fulfilling the vision and kaupapa in accordance with the Trust Deed and tikanga.

Te Taiwhenua o Heretaunga delivers whānau, health, social, housing and educational services which we provide with pride. We have just over 160 employed staff who are dedicated to meeting the needs of our people. Although our services are for all nationalities, the majority of our cliental are of Kahungunu ki Heretaunga descent.

I acknowledge the hard work and dedication of a dynamic management team and staff who work tirelessly to ensure whānau receive the services they need to enhance their wellbeing.

I am once again pleased to provide this report as the representative of Te Taiwhenua o Heretaunga on the Ngāti Kahungunu Iwi Incorporated Board and also the current Chairman of the Te Taiwhenua o Heretaunga Te Haaro Board of Trustees. I am aware that the iwi elections are coming up in the new year and I wish all those who step up to lead well in their endeavours.

Nō reira, Tēnā koutou, tēnā koutou, tēnā koutou katoa

## **Mike Paku**

### **Te Taiwhenua O Heretaunga Representative**



**Mike Paku**

# Board Member Statements



**Nelson Rangi**

Lynette Bradnam has been contracted to develop an educational strategy for Wairarapa through a Kahungunu Ki Wairarapa contract with the Ministry of Education. This is intended to be followed by its implementation in 2013. A Whānau Ora collective of iwi Kahungunu ki Wairarapa and Rangitane o Wairarapa together with health providers Rūnanga Hauora and Whaiora, are well on the way toward putting together a Whānau Ora strategic plan for Wairarapa having engaged a project management team from Northland. For years Pouakani marae has been missing from our marae hapū listing simply because it is situated in Mangakino, outside the Kahungunu rohe. However I am pleased to inform the iwi that Pouakani marae has now been officially approved as a Kahungunu marae on our marae/hapū listings. Nominations for four trustees for Kahungunu ki Wairarapa closed in September this year as we led into the postal election in October. Trustees were democratically elected at large on a skill-based criteria. I am pleased to announce our new Board, Jason Paku, Andrea Rutene, Taiwhio Gemmell, Marama Fox, Peter Rewi, Nelson Rangi & Marama Tuuta. I congratulate the new Board and welcome the new members. Together we wish the whānau o Ngāti Kahungunu all the best for another fantastic year.

## **Nelson Rangi Kahungunu ki Wairarapa Representative**

Earlier this year the Affco Freezing works lock down saw a temporary decline for the community. The effects of unemployment saw children kept home from school and frustrated parents concerned for the wellbeing of their families wondering how they would survive from one day to the next. A public meeting hosted by Ngāti Kahungunu Iwi Incorporated allowed whānau the opportunity to vent their frustration and concerns. The outcome of that meeting led to a real community drive for good and a resource centre was set up next to the Wairoa Taiwhenua Office where whānau could come for support and kai. I tend to believe that it's not when everything is going right that we see the strength of a community, but when dilemma strikes. I am pleased with our community efforts and commend whānau for providing strength and support to each other. At the end of the day, that's how we will survive. We must strengthen and help each other and persist through whatever trials we face as a community and celebrate our efforts. At the Taiwhenua we have hosted a number of initiatives that whānau are interested in for self and hapū development. Whānau have taken advantage of these learning opportunities. The Māori Land Court clinics have been very popular. This shows me that our whānau are taking more of an interest in developing their lands. The Taiwhenua office continues to be involved with the Wairoa community, with both government and non- government service providers to ensure our people benefit from their services. Marae/hapū elections for representatives on the new Wairoa Taiwhenua Board have commenced and we will be ready for the iwi elections coming up in April. We welcome new initiatives and look forward to a new year of activities.



**Rill Meihana**

## **Nāhaku iti nei Rill Meihana Te Wairoa Representative**

# Staff Members 2011-2012

The operational structure for the tari was designed to allow an integrated approach to all activities within the office. Specific units exist in the structure to implement the current iwi strategies. The senior management team meets regularly to align their strategic outputs directly with the annual plan and the overall strategic vision of the iwi.



**Meka Whaitiri**  
Chief Executive



**Dr Adele Whyte**  
Director of Fisheries  
and Environment



**Jeremy Tātere MacLeod**  
Director of Te Reo,  
Tikanga and Mātauranga



**Jenny Smith**  
Director of Health  
and Wellbeing



**Ngaio Tiuka**  
Fisheries and  
Environment  
Analyst



**Alex-Ann  
Edwards**  
Te Reo Research  
Analyst



**Dr James Graham**  
Kahungunu  
Cultural Standards  
Project Manager



**Connie Collins**  
Kaitoko Whānau



**Lesley Tawhai**  
Kaitoko Whānau

## Support Services



**Kerrin Fair**  
Database  
Administrator



**Danielle  
Keil-Lambert**  
Executive  
Assitant



**Te Rangi Huata**  
Events &  
Promotions  
Manager



**Hine Hape**  
Finance Officer



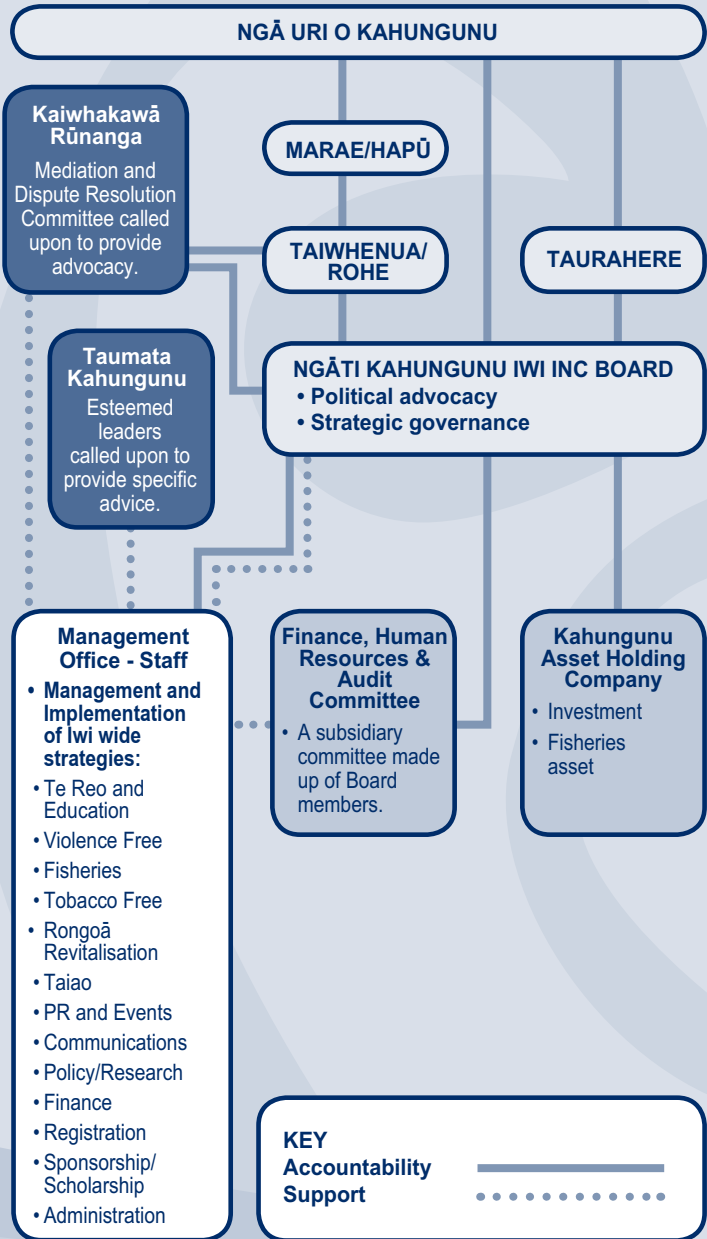
**Naomi Wilson**  
Receptionist



**Ruth Wong**  
Team Leader and  
Communications  
Advisor

# Ngāti Kahungunu Iwi Incorporated Organisation Structure

Ngāti Kahungunu Iwi Incorporated is governed by ngā uri o Kahungunu members who have the opportunity to participate through marae, taiwhenua/rohe and iwi elections. This diagram depicts the structure of the iwi from marae/hapū to governance level.



# Culturally Strong

Kahungunu matangi rau!

Ō tātau mate tuatini o te tau kua hipa, tēnā tātau i roto i ā tātau tangi ki a rātau.

Otirā, tēnā tātau i a tātau te tirohanga kanohi, kia ora mai tātau katoa.

Me uaua ka kapi katoa i ēnei kupu ruarua āku te huhua o ngā kaupapa kua oti i a mātau i roto i te tau kua hori ake nei. Heoi, mā te aha i te whakarāpopototanga o ēnei mahi, mā te pēnei e kite mai ai koutou i ngā hua kua puta, ngā wāhi rānei hai whakapau i ō mātau kaha.

Kua puta te rīpoata a te Taraipiunara o Waitangi me te whakatūpato tonu kai te tāmatemate haere tō tātau reo Māori. Kai reira ōna kaitautoko, kai reira anō hoki ōna kaiwhakatakē. E hika mā, e tautoko rawa atu ana i te whakapae nei, āe marika, kai te haumate haere te kōrerotia o te reo Māori ki roto i a tātau o Ngāti Kahungunu. Kia rangona rā anō te kōrerotia o te reo ki ngā rohe katoa o Ngāti Kahungunu, kātahi pea au ka kī, āe, tērā kai te ora te reo o te iwi. Nā reira, kia tūtakarereua tātau!

Koi rere te pātai, tēnā, me pēhea e ora mai ai te reo o Ngāti Kahungunu? He māmā tonu te whakautu. Me kōrero! Kāre tonu he take o te whakarauora reo, ki te kore a Ngāti Kahungunu e tahuri mai ki te kōrero i tōna reo. Koi waiho kau noa hai reo mō te pepa, te pene, tē kōrerotia kētia ai e te arero. Nā reira, tahuri mai e te iwi! Ākona te reo! Kōrerotia te reo! Koianei te rongoā ki tēnei mate e kiia mai nei he parekura nui kai te haere.



Pictured are the Taumata which is a small group made up of four leading exponents who advise Ngāti Kahungunu Iwi Incorporated on cultural matters of significance. From left Dr Pita Sharples, Tama Huata, Dr Rangimārie Pere & Ahorangi Piri Sciascia.

# Culturally Strong



Pictured are the staff of Ngāti Kahungunu Iwi Incorporated with our Taumata, our Kaumātua and Chairman.

Ka tahi, ko te reo. Ka rua, ko tōna kaitautoko, ko ā tātau tikanga. Nō tēnei tau nei i karangatia ai te Taumata o Ngāti Kahungunu, ā, kua tīmata te whakatū hui e taea ai e rātau ō rātau nā pūkenga te tohatoha haere ki tō tātau iwi. Kia mau tātau ki te tapu o ā tātau tikanga, o tō tātau kawa. Kāore e kore, i te mea he ao hurihuri tēnei, ko ētahi kawa me whakarerekē. Ahakoa tonu, me mau pū tonu tātau ki te tapu o ā tātau tikanga i whakarērea iho e ō tātau pakeke. He tino kaupapa tēnei ka wānangatia i roto i ngā marama e tū mai nei.

Hāunga te reo me ngā tikanga anahe, ko te penapena tonu i a tātau tamariki kia eke atu ai rātau ki ngā taumata tiketike o te mātauranga tētahi kaupapa nui e whāia ana e mātau. Kua whakaterea anō te waka o Te Pae Huarewa (Kahungunu Cultural Standards), ā, ko tōna hoa ko Te Kauhua. Ko ēnei kaupapa e rua e kipakipa ana i ngā kura auraki kia tino tangata whenua ai ā rātau akoranga Māori, ā, kia riro tonu mā te hapū o taua takiwā e tiaki te tinorangatiratanga o ā rātau kōrero, hai whāngai tonu ki ngā tamariki o aua kura rā. Poipoia ā tātau tamariki, kia puta mai ai he pito mata, kia puta ai he rangatira!

Ngāti Kahungunu, anei anō tāku e īnoi atu nei, tahuri mai ki tō tātau reo me ōna tikanga! E kore e ora i te takitahi, engari, mā te takitini tonu tō tātau reo e kawē ki ngā ao o āpōpō, e kore ai ia e memeha, engari kia ora tonu i ngā tau tini, tau mano, mō te haere ake, haere ake nei!



**KAHUNGUNU**  
**KIA EKE**

# Fisheries and Environment



Picture taken at the 2012 Fish Hook Summit outside the Napier Sailing Club, Napier.

The Fisheries and Environment Unit has had another busy and productive year. Some Key Highlights for the period 1st July 2011 – 30th June 2012 are outlined below:

## **Pāua Reseeding**

– Kahungunu: “Reconnecting with ourselves and Tangaroa”.

- This project has come through as a clear highlight due to the way that this project was enthusiastically taken up and “owned” by hapū in Waimarama, Purerere and Porangahau.
- The wairua that was generated on the reseeded day (26th Nov 2011) was incredible. Very proud to be Kahungunu and part of something so special. Enhancement of taonga species is clearly identified in the KKUKKT strategy as a priority.
- Relationships have been built between hapū and iwi; hapū and their communities and hapū/iwi and industry. Development and communication with all stakeholders is clearly identified as a KKUKKT priority.
- An initial report to determine the feasibility of producing “Kahungunu Brood stock” and a possible development of a “customer” model was completed.
- A lot of follow up work with hapū and Industry is planned for the upcoming year including:
  - Monitoring and Research – by utilising and training hapū dive teams.
  - Protection/Compliance – by use of traditional (rāhui) and new customary management tools.
  - Planning Phase II – Reseeding in Wairarapa.

Information gathering and sharing, capability building and identification of commercial opportunities are all KKUKKT priorities.



Pāua reseeding – a whānau affair.

## WAI – Freshwater Wānanga Series

– Ko wai?, Nō wai?, Mā wai?

- New series for 2011/12 was successful concluded. Kōrero was summarised with key and common themes being identified.
- Water 'ownership' is shaping up to be a critical area for all of New Zealand so the timing of our wānanga was fortuitous.
- The Fish Unit is supporting the CE and Chairman in this kaupapa.

As we move into the next financial year, our focus on maintaining **our relationships and communication** with hapū and whānau and fisheries stakeholders will continue. We will also put a higher emphasis on developing **joint research projects** and applying for **funding** so that we can continue to produce positive research outcomes with our hapū and whānau.

We would like to thank everyone who has worked with us over the past year. We wish you a safe and happy holiday period. Let us know if you see any of our juvenile pāua while out on those beaches!

## Environment

Environmental advocacy over the last year has been mainly around finalising the appeals to the Horizons OnePlan and HBRC's Coastal Environment Plan. Ngāti Kahungunu Iwi Incorporated has also been represented at several EPA Hui and is building capacity at this level as the statutory roles for the EPA are increasing with their interaction across multiple agencies.

The iwi authority has also been providing expertise and advice for Tāmaki-nui-a-Rua due to the increased number of resource consent issues in the Tararua District, particularly around wind farm developments and interaction with the major energy companies.

There is an increase in the number of proposed regional plan changes within our rohe, notably concerning infrastructure development and lately, water related issues. We have been contributing to these processes to ensure Kahungunu interests are reflected favorably in decision-making outcomes.



**KAHUNGUNU KI UTA**  
**KAHUNGUNU KI TAI**  
**PROTECTING OUR ENVIRONMENT**



# Strong, Vibrant, Healthy Whānau

Kia ora mai tātau e pae nei, nīka te mihinui ki a koutou.

The Directorate of Te Ara Toiora (Kahungunu Health & Wellbeing) has had a progressive year with a lot of great work completed by the Forum members of Te Ara Toiora's four Strategic Workstreams.

The key challenge for this directorate is to be inclusive of our Kahungunu Tribal Rohe and ensure we work with each of our 6 Taiwhenua who connect our 85 Kahungunu Marae to facilitate the progress of Te Ara Toiora. The challenges for this is engaging with the central and local government.

In the Kahungunu rohe we have:

- 3 Police Districts
- 3 District Health Boards
- 8 District Councils
- 3 Regional Councils
- 2 Ministry of Social Development Regions

Tīhei Kahungunu!



Picture of the Quitline staff group who recruited over 100 Kahungunu whānau members on the Quit Smoking programme at the AGM Pa Sports Day.

## **Kahungunu Tupeka Kore: Tobacco Free Action Forum**

Through the Kahungunu Tobacco Action Group, innovative campaigns have been undertaken over the last year. This Forum is Chaired by Owen Purcell – the Ngāti Kahungunu Iwi Incorporated Board Taurahere Representative.

- Held the first Tobacco Free event in New Zealand and thereafter all events hosted by Ngāti Kahungunu Iwi Incorporated are Tobacco Free. QuitGroup provided the cessation support and broke their own national records of whānau signing up to quit.
- Held a workshop for Event Coordinators on how to optimise health promotion at their events.
- Worked with the Hawke's Bay District Health Board Smokefree Team to develop an Smokefree Event Toolkit for Event Coordinators and successfully launched that at the workshop.
- Working with th Hawke's Bay District Health Board developing support toolkits for Registered Nurses so they can better mannaki rangatahi to becoming tobacco free.
- Just launched (27 Sept 2012) the Kahungunu Tobacco Free Whānau Manaaki Kit which is targeted at whānau who are Smokefree and wish to support their whānau in becoming Smokefree. The whānau ring 0800KAHUNGUNU and we post them the kit and take a few details. We have received agreement from 6 organisations who reside in each of the 6 districts of Kahungunu (Wairoa, Napier, Hastings, CHB, Tararua & Wairarapa) to include in the kit their Smokefree Tautoko Quit Coaches contact details to further support whānau into becoming Tobacco Free.

Put in two submissions: (a) Smoke-free environments (controls and enforcement) amendment bill and (b) Proposal to Introduce Plain Packaging of Tobacco Products in New Zealand.

## **Kahungunu Whakarauora Rongoā: Rongoā Revitalisation Forum**

Whakarauora Rongoā is led by our Kahungunu Kaumātua Te Maari Joe, Tiemi Whaanga and Kaupa Teariki. The Pae Mahi who coordinate their rohe rongoā whānau hui are:

# Strong, Vibrant, Healthy Whānau

- Wairoa: Te Miini Smith & Marama Tareha Te Hata
- Ahuriri/Heretaunga: Ruiha Stirling
- Wairarapa: Frances Reiri Smith

Kahungunu successfully elected two representatives onto the newly established National Rongoā Board called Te Kāhui Rongoā Trust. They are currently working on developing protocols to support safe practices for rongoā practitioners.

Held two of three 2-day Te Kauwae Runga Te Kauwae Raro Wānanga. The first was held at Pāpāwai Marae, Greytown and the second was held at Takitimu, Wairoa. The third wānanga will be held in Heretaunga around Feb – Mar 2013.

## **Kahungunu Whakamoe Patu: Violence Free Strategy**

This Forum is Chaired by Ruruhira Tawhai with whānau who work in this sector attending. This year the Forum has put in two submissions: (a) Māori Affairs Select Committee: Inquiry into the Determinants of Wellbeing for Māori children and (b) Green Paper for Vulnerable Children.

This year the Forum has decided to focus on Ngā Mātua Rangatahi - Rangatahi between the ages of 15 – 25 years of age who are parents. The forum looks at the challenges for this vulnerable group and how as a forum collectively manaaki and tautoko these rangatahi.

In addition, there is currently a Kahungunu Criminal Justice Project, which is a 3-year research project on 'The Impacts of the Criminal Justice Process on Ngāti Kahungunu.'

This research will form the basis of an innovative strategic approach to address the impacts of the criminal justice process on Ngāti Kahungunu Whānau whānui.

## **Tū Mai Rā: Kahungunu & Hawke's Bay District Health Board Māori Health Strategy**

This strategy is overseen and supported by the HB District Health Board Māori Relationship Board (MRB) who are made up of Kahungunu mandated representatives Chaired by Ngāhiwi Tomoana and Co-Chaired by Tatiana Cowan Greening. Tū Mai Rā was launched in 2011 with the key focus of 'Improving Māori Health is everyone in the Health Sectors business' and so all parts of the District Health Board report on Māori Health to the Māori Relationship Board. One of the key functions of the Māori Relationship Board is to monitor the strategic and operational performance of the HB District Health Board delivered and funded services to ensure they support the improvement of Whānau Health and Wellbeing and are responsive to their needs.



I would like to take this opportunity to thank and acknowledge the advocacy and hard work provided by all our whānau members of the four Strategic Forums and for their dedication and commitment to the kaupapa of Te Ara Toiora – Kahungunu Living Longer, Tīhei Kahungunu!

# Benefits to Members

## Communications

Ngāti Kahungunu Iwi Incorporated is committed to informing its members through a number of mediums. 'Pānui ki te iwi' is an email network that continues to be one of the fastest ways to disseminate current information. Whānau wanting to be informed are invited to join this network. Facebook is a great resource for our younger and IT savvy members. The Kahungunu website [www.kahungunu.iwi.nz](http://www.kahungunu.iwi.nz) is also a portal for connecting with our iwi whānau. Media releases are sent out on an as need basis. We use radio networks, TV and print media to get our information out to the public. Advertisements, event information, whakapapa, environmental news, educational news and other activities continue to spread throughout the rohe using these mediums. This year the bi monthly Hoea rā newsletter has become a four seasonal edition with an electronic website based calendar of events which allows whānau to keep abreast of iwi activities and opportunities.

## Registrations

We have a steady increase of registrations with 641 new registrations entered over the year. This is our main iwi database and needs constant maintenance. We are always looking to improve the way we communicate with our people and it is important that the registration database is kept up to date. Heretaunga and Wairoa Taiwhenua continue to lead in the number people who register with the iwi and they make up 62.4% of the new members who registered this year.

## New Members Summary by Area Report:

*Members Entered between 01/07/2011 – 30/06/2012*

No Taiwhenua/Taurahere/NMW	4
Heretaunga	199
Tāmaki-nui-a-Rua	26
Tamatea	26
Wairarapa	88
Wairoa	183
Te Whanganui-a-Orotū	36
Ngā Parirau-o-te-Ika	46
Te Raki/Tamaki Makaurau	6
Te Upoko-o-te-Ika	15
Te Waipounamu	12
<b>Grand Total</b>	<b>641</b>

## Membership Report including Missing Information

	Total	No DOB	Incorrect Addresses
No Taiwhenua/Taura Here/NMW	862	28	197
Heretaunga	7598	1357	1718
Ngā Parirau-o-te-Ika	634	4	134
Tāmaki-nui-a-Rua	792	28	210
Tamatea	965	154	258
Taura Here-a-te-Ao	152	14	50
Te Raki/Tamaki Makaurau	397	9	56
Te Upoko-o-te-Ika	451	6	82
Te Waipounamu	365	6	62
Wairarapa	2203	273	550
Wairoa	4977	275	1156
Te Whanganui-a-Orotū	2300	55	507
<b>Grand Totals</b>	<b>21696</b>	<b>2209</b>	<b>4980</b>

# Benefits to Members

## Events

Ngāti Kahungunu Iwi Incorporated proudly produces events to strengthen cultural and communal ties, build pride in Kahungunutanga and provide welcoming places for people to gather.

The Waiata Māori Music Awards and Takitimu Festival staged in September at the Hawke's Bay Opera House in Hastings garnered excellent reviews in the media. Superb national and international artists provided a wonderful kaleidoscope of colour and sound. Reggae band 1814 shared they had never experienced a spontaneous haka by an audience of over 1,000 plus as they received at the end of their performance.

The Kahungunu Sport Awards in November hosted by Tamatea in Waipukurau attracted a great turnout with over 350 people enjoying rugby league greats Stacey Jones and Kevin Tamati. A proud mother Horiana Dagg accepted the Kahungunu Sports person of the Year trophy for her son Israel, a member of the 2011 RWC All Black Champion rugby team.

The AGM Pa Sports Day at Splash Planet last November once again proved popular with 1200 players competing in 65 marae and whānau teams and supported by 2,600 supporters.

The kaumātua euchre tournament was hilarious, the day was fantastic and the weather was glorious. What a great occasion for Kahungunu to welcome the summer!

Waitangi Day in February attracted a record turnout of over 15,000 people to the Hawke's Bay Sports Park to enjoy the Kahungunu Kapa Haka Regionals. Winner Te Rerenga Kōtuku and runner up Ngāti Ranginui will represent Kahungunu at Te Matatini in Rotorua next year.

Guest performers House of Shem brought the house down with a wonderful performance of original reggae music. Touch, netball and volleyball were also popular additions to the day's celebration. "This is the biggest crowd I've ever seen here" said Hastings Mayor Lawrence Yule. "It's wonderful to see our new facility used by so many people"

Matariki shone brightly across Kahungunu as events held in Dannevirke, Wairoa, Napier, Hastings and Masterton attracted record crowds. Cold wet weather in Masterton failed to deter 2,500 festival goers. From youngsters to rangatahi, right through to kaumātua, Matariki has proved popular for all whānau.

Key to the success of Matariki has been community involvement; with well known singers like RWC 2011 songstress Ria Hall taking to the stage as well as hundreds of youngsters joining Beyonce's "Move Your Body" contest judged by the Rezzpect Dance Crew.

Ngāti Kahungunu Iwi would like to thank our community organisers for their wonderful work in their regions including the 20 strong Taiwhenua Events Team in Tāmaki-nui-a-Rua, Kyra Hill and PJ Devonshire in Wairarapa, Syd Maaka and Jolene Morell in Heretaunga, Waiohiki whānau in Ahuriri and three mothers in Wairoa Sara Rangi, Michelle Tahuri and Sheree Cotter.

We'd like to thank our major Matariki funders too, Te Puni Kokiri, Flaxmere Trust House, Lion Foundation in Waipukurau, Creative Communities in Hastings and Masterton and Wairoa's Endeavour Foundation.

Ngāti Kahungunu Iwi's long term plan is for these events to become the premier seasonal gathering for these region's at that particular time of year. So far we have achieved that goal in Wairoa, Tamatea, Heretaunga and Tāmaki-nui-a-Rua and are not far off in the other areas.

# Benefits to Members

## Sponsorship

Cultural and Sporting pursuits are an important aspect of personal, whānau, hapū and iwi development. Each year a number or individuals or groups are selected to participate in National or International events. This year Ngāti Kahungunu Iwi Incorporated supported the following individuals or groups as follows:

Individual or Group	Representation or Event
Porangahau Marae Committee	Matariki Ball
Harmony Aporo	NZ U17 Volleyball - International Tournament
Aaliyah Ah Kiong	NZ U16 Womens Basketball - International Tournament
Breana Jones	Emerging Womens Tall Ferns Basketball Clinic
Josh Bloxham	NZ University Men's Basketball - International Tournament
Hukarere Girls' College	Mapihi Mourea Scheme - Leadership Development
Matiu Spooner	NZ U14 (male) Koru Basketball Tour - International
Maia Wati-Cooper	NZ Telecom 7's - International Tournament
Mangai Hanara Jnr	Aotearoa Māori Rugby League - National Tournament
Te Poho O Kahungunu - Rongomaraeroa Marae	Rongomaraeroa 100 year Celebrations
Rita Hokianga	NZ Junior White Socks - International Tournament
Ngāti Pahauwera Kaumātua Trust	Kaumātua Citizens Golden Ball - Waipapa a Iwi Marae
Sport Hawke's Bay, Wairoa	2011 Wairoa Sports Person of the Year Awards
Hinekura Kingi	NZ U14 (female) Koru Basketball Tour - International Tournament
Mangai Hanara Jnr	Hawke's Bay Māori League Tournament - National event
Maraenui Bilingual School	2011 Ngāti Kahungunu Primary Schools Kapahaka Festival - National event
Daniel Kahu	International 2012 Commonwealth Junior Fencing Championships - International Tournament
Te Kura Kaupapa Māori O Te Ara Hou	National Kura Kaupapa Sports Event - National event
Hastings District Council	New Zealand Black Sticks - International Tournament
HB Waka Ama	Waka Ama Sprints 2012 - National event
HB Mens National Fast Pitch	HB Mens National Fast Pitch Competition - National event
Omahu Marae Trustees - Omahu Marae	Omahu Marae - Buy a Brick DIY
Karamu High School	National Ki O Rahi Tournament - National event
Jasmine Waerea	Queens Diamond Jubilee Pageant - National event
Dean Barber	International Abalone Conference - International event
Mahaki Akauola	Waka Ama Nationals
Aurora Akauola	Waka Ama Nationals
Amber Logan	Inaugural World Indigenous Housing Conference - International event
Te Kura Kaupapa Māori o Ngāti Kahungunu ki Heretaunga	2012 National Secondary Schools Kapa Haka Competitions - National event
Emma Rose Houkamo	NZ Junior Development Softball - International Tournament
Michal Tangaroa	NZ Whitesox Softball Championships - International Tournament
Melanie Gettins	NZ Womens Softball Championships - International Tournament
Strickland Young	Worlds Championships of Performing Arts 2012 - International Tournament
Manaia Canterbury	2012 IVF Va'a World Sprint Championships - International Tournament
Kiri Shaw	NZ Womens Softball Championships - International Tournament
Tiwana Aranui (jnr)	NZ Junior Development Softball - International Tournament
Te Wānanga Whare Tapere	Takitimu Festival - International event
Waiata Māori Awards Charitable Trust	Waiata Māori Music Awards - National event
He Pataka Trust	Kai in the Bay
Te Timatanga Ararau Trust	IronMāori 2011
Department of Conservation	Seaweek 2012

# Benefits to Members

## Scholarships

Ngāti Kahungunu Iwi Incorporated provides educational funds to its iwi members to encourage and recognize the pursuit of academic excellence. During this financial year iwi scholarships were promoted in the inaugural 12 month calendar and communicated out via Radio Kahungunu, various newspapers, the iwi email network, Kahungunu website and through all major Tertiary Institutions.

We are pleased to report that 75 general scholarship and 9 research scholarship applications were received this year. The majority of the applications came from students who whakapapa to Heretaunga and Wairoa which are also the largest registered member areas. Applications were ranked on eligibility according to the criteria and then on academic merit. Thirty four (34) general scholarship applicants received \$500 each. Two (2) research scholarship applicants received \$5000.00.

This year Ngāti Kahungunu Iwi Incorporated provided an Internship Scholarship. This opportunity drew in a number of applicants who indicated interest in working within an iwi environment toward the development of our strategies. During November 2011 – February 2012, four interns joined the staff within the tari to participate in this mahi.

A list of successful taura follows.

### Thirty four (34) Successful General Scholarship Recipients

Name	Institute - Qualification Sought
Aroha Taurima	Te Wānanga O Raukawa - Poutuarongo/Whakaakoranga Teaching
Joe-Anne Tukaki-Walters	Massey University - Graduate Diploma In Teaching - Secondary
Lauren Michelle Wepa	Massey University - Bachelor Of Design (Visual Communication Design)
Kimberley Nicole Tuapawa	Gradschool.Com.Au - Master Of Digital Media
Joana Pawson	Canterbury University - Bachelor Of Social Science Geology
Troy Joshua Gardiner	Auckland University - Bachelor Of Education *(Primary)
Virginia Barlow	Victoria University - Masters Of Architecture
Jared McIntosh	University Of Otago - Bachelor Of Laws (With Honours) & Ba Of Arts
Jacinda Shilton	Auckland University - Bachelor Of Oral Health
Cala MacFarland	Eastern Institute Of Technology - Ba Te Reo Māori - Honours
Moana Mcneil	University Of Otago - Bachelor Of Consumer And Applied Science
Ani- PikiRapua I Te Rangi Tuari	Victoria University - Bachelor Of Arts
Christina Marshall	Massey University - Master Of Science
Cedella Anahera Swan-Tarao	Eastern Institute Of Technology - Bachelor Of Māori
Moehau Kauri Rata Hodges-Tai	Waikato University - Bachelor Media & Creative Technologies
Saarah Gul	Manukau Institute Of Technology - Bachelor Of Communications

# Benefits to Members

Name	Institute - Qualification Sought
Mei Vina Winitana	Te WhareWananga O Awanuiarangi - Doctor Of Philosophy
Digby George Livingston	Universite Jean Moulin - Master Law
Lucy Barber	University Of Otago - Bachelor Of Medicine And Surgery
Raella Donna Elizabeth Kahura	Waikato University - Masters Of Education
Kaea Gordon Matenga	Auckland University - Bachelor Of Medicine And Surgery
Thomas Pere	Massey University - Bachelor Of Health Science
Ezra NgawatiTauria Nordstrom	Auckland University - Bachelor Of Health Science
Kimberley Te Awhi Jones	Waikato University - Graduate Diploma In Teaching - (Primary)
Meeraera Hesketh	Te Wanaga O Raukawa - Masters Whakaakoranga
Anotoinette Koko	Christchurch Polytech - Bachelor Of Languague
Paiana Whaanga	Univesity College Of Learning Palmerston North - Bachelor Of Applied Visual Imaging
Waiharakeke Winiata	Whitireira New Zealand - Bachelor Nursing
Luke Mills	University Of Otago - Masters Of Business (Finance)
Sinnetta Voight	Waikato University - Diploma In Clinical Psychology
Marise Stuart	University Of Otago - Bachelor Of Medicine And Surgery
Tania Gilchrist	Auckland University - Doctrate In Clinical Psychology
Eru Hart	Victoria University - Ba English Literature & History Majoirs
Tuirina Wehi	Auckland University - Master Of Arts, Māori Development

## Two (2) Successful Research Scholarship Recipients

Gabrielle Goodin	Victoria University - Masters In Marine Conservation
Rhiannon Mihi Jones	University Of Otago - Master Of Dietetics

## Four (4) Successful Interns

Rangihaanu Rolls	Te Ara Toiora/Health and Wellbeing
Raiha Huata	Te Reo Māori me ona Tikanga
Pohatu Paku	Te Ara Toiora/Health and Wellbeing
Paul Roberts	Fisheries

# Kahungunu Asset Holding Company Ltd Chairman's Report

For the year 2011 - 2012

**Kahungunu, he tangata ahuwhenua,  
Mōhio ki te whakahaere i ngā mahi o uta me ō tai**

TĪHEI KAHUNGUNU!

It is my pleasure to provide a report of Kahungunu Asset Holding Company Limited (KAHC) results for the year ended 30 of June 2012.



## BACKGROUND

Kahungunu Asset Holding Company Limited was established in 2005 by Ngāti Kahungunu iwi Incorporated (NKII) to receive and manage the Treaty of Waitangi Fisheries settlement on behalf of Ngāti Kahungunu.

## NATURE OF BUSINESS

The business of the KAHC is to receive and manage the Fisheries Settlement assets and other commercial assets of NKII, for maximum commercial benefit. Each year the company agrees its Statement of Intent with NKII Board, setting the strategic direction and expected returns for the coming year.

## FISHERIES SETTLEMENT ASSET

The key assets owned by KAHC include fishing quota, shares in Aotearoa Fisheries Limited (who in turn own 50% of Sealord and a range of other seafood interests), shares in Napier Mussels Limited, shares in Fiordland Lobster Company Limited and cash. Specifically, the company has received the following settlement assets to manage on behalf of Ngāti Kahungunu in accordance with the Māori Fisheries Act 2004.

- August 2006: 162,942,485 quota shares valued at \$9,436,871
- August 2006: 7874 income shares in Aotearoa Fisheries Ltd, valued at \$19,874,735<sup>1</sup>
- July 2010: 501,527,278 quota shares valued at \$16,933,500<sup>2</sup>
- Cash of \$2,030,106

## COMPANY AIM: Maximum sustainable returns

Objectives: The Company has the following objectives:

- Build intergenerational wealth for Ngāti Kahungunu
- Maximise the financial return on the assets
- Build a sustainable capital base for the future.

## FINANCIAL PERFORMANCE

The operating profit of the company has steadily improved each year as has the retained earnings and improvement in equity as shown in the graphs below.

	<b>Gross Profit 2007-2012</b>	<b>Retained Earnings 2007-2012</b>	<b>Total Equity 2007-2012</b>
30-Jun-07	\$1,769,233	\$344,051	32,684,003
30-Jun-08	\$2,458,049	\$1,402,100	33,742,051
30-Jun-09	\$2,028,815	\$2,030,915	34,370,866
30-Jun-10	\$2,733,836	\$3,364,748	52,222,903
30-Jun-11	\$3,409,582	\$4,983,779	53,992,484
30-Jun-12	\$3,872,548	\$7,216,327	57,724,877

After payment of the \$1,640,000 dividend to Ngāti Kahungunu Iwi Incorporated, we are pleased to report an increase in equity of \$3,732,392 for the year ended 30 June 2012.

1. The shares in AFL and Quota received under the Fisheries Asset Settlement process have been included in the accounts at the value established by Te Ohu Kaimoana on transfer.
2. CRA3 quota valued at \$1,617,057 is reserved for settlement with Rongomaiwahine Iwi Trust from this settlement.



# Kahungunu Asset Holding Company Ltd Chairman's Report

## FINANCIAL PERFORMANCE BY ASSET CLASS

### Aotearoa Fisheries Ltd (AFL)

The 7874 AFL income shares represent a 6.3% holding in AFL.

AFL has had a 5 year dividend holiday, paying its first dividend in the 2010-2011 financial year.

KAHC received a nett dividend of \$573,336 but a refund on Māori Authority tax credits for the 2010-11 year of \$115,512 and for the 2011-12 year of \$138,883 has improved this result in the year of reporting.

This represents a return on investment of 4.2%<sup>3</sup>

The net book value (NBV) of the KAHC's shareholding in AFL as disclosed in its Annual Report<sup>4</sup> was \$24,969,398, an improvement in capital value of \$5,094,664 since the shareholding was transferred.

### Aotearoa Fisheries Shares NBV

30-Jun-08 19,359,459

30-Jun-09 20,043,676

30-Jun-10 22,547,575

30-Jun-11 24,342,565

**30-Jun-12 24,969,398**

### Shares in Fiordland Lobster Company Ltd

The company owns 131,590 shares in Fiordland Lobster Company Limited (FLC). This represents a 5.86% holding in that company. These shares have been included in KAHC accounts at cost. The net book value of the company's shareholding in FLC as disclosed in its Annual report was \$4,297,351.

This investment has managed a return on investment of 11%.

### Fiordland Lobster Dividend

30-Jun-08 45,000

30-Jun-09 91,431

30-Jun-10 120,590

30-Jun-11 144,749

**30-Jun-12 159,224**

The capital value of the shares has improved by \$3,161,287 over 5 years.

### Fiordland Lobster NBV shares

30-Jun-08 1,136,064

30-Jun-09 1,788,061

30-Jun-10 2,658,504

30-Jun-11 3,733,886

**30-Jun-12 4,297,351**

### Quota - ACE sales

The bulk of KAHC's earnings from the sale of Annual Catch Entitlement (ACE) derive from the quota. Employing our investment strategies the company has managed a return on the quota value of 12%.

### ACE Sales

30-Jun-07 1,983,963

30-Jun-08 2,755,961

30-Jun-09 2,551,163

30-Jun-10 3,163,240

30-Jun-11 3,194,436

**30-Jun-12 3,300,792**

3. Return on investment is calculated on cost.

4. For information on AFL visit their website <http://afl.Māori.nz/>

# Kahungunu Asset Holding Company Ltd Chairman's Report

## Shares in Napier Mussels Ltd

KAHC received 40% shareholding in Napier Mussels Ltd (NML) from Ngāti Kahungunu Iwi Incorporated. In the period the KAHC has owned this shareholding in NML, it has not been viable to develop the farm but it was important to maintain the resource consents and the value of the marine farming space.

## Aquaculture Settlement

The Māori Commercial Aquaculture Claims Settlement Act 2004 provides for a settlement to iwi through its Iwi Aquaculture Organisation for 20% of marine farming space where permits leases or licenses were issued between September 1992 and January 2005. This is referred to as 'pre-commencement space'. Ngāti Kahungunu has reached agreement with the Crown for settlement of 20% of the marine farm in Hawke's Bay owned by Napier Mussels Ltd and a cash settlement has been agreed to the value of \$1,499,845. The settlement was negotiated by KAHC in the 2010-2011 year with Deed of Settlement completed in the 2011-12 year and transferred to KAHC.

## CONSTITUTIONAL REPORTING

During the year to June 2012 there have been no:

- sales or exchanges of Settlement Quota;
- transactions with Settlement Quota that have resulted in a registered interest by way of caveat or mortgage being placed over the quota;
- interests registered against the Settlement Quota shares;
- sales or exchanges or acquisitions of AFL Income Shares,
- formal joint ventures that conduct business using the Settlement Quota or Income Shares
- Changes made under section 18 of the Māori Fisheries Act to constitutional documents of Ngāti Kahungunu Iwi Incorporated or of the KAHC.



**Rangi Manuel**  
Chairman

# Statement of Financial Performance

FOR THE YEAR ENDED 30 JUNE 2012

INCOME	Consolidated*		Parent*	
	2012 \$	2011 \$	2012 \$	2011 \$
Administration and Other Operating	535,263	691,776	193,318	362,088
Emissions Trading Scheme Allocation	-	150,550	-	-
Hi Ika income	3,468,506	3,440,443	80,392	13,538
Matauranga	88,789	173,330	88,789	173,330
Hauora	248,385	249,841	248,385	249,841
Mauri Ora	123,179	78,304	123,179	78,304
Merchandising	1,223	5,676	1,223	5,676
Dividend	986,956	620,192	1,640,000	1,640,000
<b>Total Operating Income</b> 2	<b>5,452,301</b>	<b>5,410,111</b>	<b>2,375,286</b>	<b>2,522,776</b>
<b>LESS EXPENDITURE</b>				
Administration and Other Operating	993,187	771,785	703,919	598,142
Hi Ika	693,882	955,971	266,081	247,753
Communication	90,988	110,413	90,988	110,413
Matauranga	273,236	224,316	273,236	224,316
Hauora	184,777	231,342	184,777	231,342
Mauri Ora	506,053	282,008	506,053	282,008
Governance	605,600	541,842	442,296	398,419
<b>Total Expenses</b> 3	<b>3,347,723</b>	<b>3,117,675</b>	<b>2,467,350</b>	<b>2,092,392</b>
<b>Net Surplus/(Deficit) for year</b>	<b>2,104,578</b>	<b>2,292,436</b>	<b>(92,063)</b>	<b>430,384</b>

\* Consolidated means group (refer to note 1 on page 26). Parent means Ngāti Kahungunu Iwi Incorporated.

# Statement of Movements In Equity

FOR THE YEAR ENDED 30 JUNE 2012

<b>Opening Equity as at 1 July</b>	56,282,206	54,229,190	4,453,818	4,262,854
Net Surplus/Deficit for the year	2,104,578	2,292,436	(92,063)	430,384
<b>Total recognised revenues &amp; expenses</b>	<b>2,104,578</b>	<b>2,292,436</b>	<b>(92,063)</b>	<b>430,384</b>
<b>Contributions from/ Distributions to owners</b>				
Aquaculture Settlement 4	1,499,845	-	-	-
Less: Taiwhenua/ Taurahere distribution 5	(240,000)	(239,420)	(240,000)	(239,420)
	<b>1,259,845</b>	<b>(239,420)</b>	<b>(240,000)</b>	<b>(239,420)</b>
<b>Closing Equity as at 30 June</b> 6	<b>59,646,630</b>	<b>56,282,206</b>	<b>4,121,755</b>	<b>4,453,818</b>

These financial statements must be read in conjunction with the accompanying notes.

# Statement of Financial Position

AS AT 30 JUNE 2012

		Consolidated		Parent		
		2012	2011	2012	2011	
		\$	\$	\$	\$	
<b>ASSETS</b>						
<b>NON CURRENT ASSETS</b>						
	Motor vehicles & plant	7	213,059	192,895	173,209	161,004
	Intangibles	8	26,771,321	26,880,921	-	-
	Investments & advances	9	21,328,585	21,347,070	2,200,000	2,218,485
	<b>Total Non Current Assets</b>		<b>48,312,965</b>	<b>48,420,886</b>	<b>2,373,209</b>	<b>2,379,489</b>
<b>CURRENT ASSETS</b>						
	Bank and cash	10	16,097,239	12,484,469	6,907,610	5,266,583
	Debtors and Prepayments		462,571	122,187	106,160	73,463
	Accrued income		399,121	382,720	119,980	70,749
	Stock on hand	11	2,580	150	2,580	150
	Settlement quota receivable	12	-	-	1,617,057	1,617,057
	<b>Total Current Assets</b>		<b>16,961,511</b>	<b>12,989,526</b>	<b>8,753,387</b>	<b>7,028,003</b>
	<b>TOTAL ASSETS</b>		<b>65,274,476</b>	<b>61,410,412</b>	<b>11,126,596</b>	<b>9,407,492</b>
<b>LIABILITIES</b>						
<b>CURRENT LIABILITIES</b>						
	Creditors & Other Payables		409,644	412,856	1,786,639	250,514
	Vehicle lease within 1 year	13	-	44,350	-	44,350
	Taiwhenua/Taurahere grants payable	5	157,929	45,429	157,929	45,429
	Income in advance		274,799	186,000	274,799	186,000
	Provisions	14	4,785,475	4,439,571	4,785,475	4,427,381
	<b>Total Current liabilities</b>		<b>5,627,847</b>	<b>5,128,206</b>	<b>7,004,841</b>	<b>4,953,674</b>
	<b>TOTAL LIABILITIES</b>		<b>5,627,847</b>	<b>5,128,206</b>	<b>7,004,841</b>	<b>4,953,674</b>
<b>EQUITY</b>						
	Retained earnings		9,988,080	8,123,501	2,771,754	3,103,818
	Reserve fund		1,350,000	1,350,000	1,350,000	1,350,000
	Fisheries settlement assets reserve		48,158,000	46,658,155	-	-
	Emissions trading scheme reserve		150,550	150,550	-	-
	<b>TOTAL EQUITY</b>	6	<b>59,646,630</b>	<b>56,282,206</b>	<b>4,121,754</b>	<b>4,453,818</b>
	<b>TOTAL LIABILITIES AND EQUITY</b>		<b>65,274,477</b>	<b>61,410,412</b>	<b>11,126,596</b>	<b>9,407,492</b>

These financial statements were authorised for issue by the board on 28 September 2012.



Chairman - Ngahiwi Tomoana



Board Representative - Nelson Rangī

These financial statements must be read in conjunction with the accompanying notes.

# Notes to and Forming Part of the Financial Statements

FOR THE YEAR ENDED 30 JUNE 2012

## 1 STATEMENT OF ACCOUNTING POLICIES

### Reporting Entity

Ngāti Kahungunu Iwi Incorporated (the society) is an incorporated society established under the Incorporated Societies Act 1908.

Ngāti Kahungunu Iwi Incorporated has several subsidiary entities.

The reporting entity comprises the society and consolidated group of the society and its subsidiaries (the group).

The financial statements are prepared under generally accepted accounting principles.

### Measurement Base

The accounting principles recognised as appropriate for the measurement and reporting of earnings and financial position on an historical cost basis are followed.

### Differential Reporting

The group qualifies for differential reporting as it is not publicly accountable, and not large in size. The group has taken advantage of all available differential reporting exemptions except for FRS 19 Accounting for GST.

### Specific Accounting Policies

The specific accounting policies which materially affect the measurement of financial performance and financial position have been applied.

#### (a) Consolidation

The purchase method of consolidation has been applied in preparing the consolidated financial statements. All inter entity transactions and balances have been eliminated on consolidation.

#### (b) Operating Revenue

This represents revenue earned from the sale of the group's products and services, investment income on the group's investments, and income earned on contracts for services, net of any credit allowed. Project and contract related income is recorded on an accruals basis, consistent with the degree of project or contract completion.

#### (c) Depreciation

Depreciation has been calculated using rates permitted by the Income Tax Act 2007.

Vehicles	31% DV
----------	--------

Plant & Computer Equipment	11.4-60% DV
----------------------------	-------------

#### (d) Income Tax

The group is registered as a charitable entity under the Charities Act 2005 so qualifies for an income tax exemption under the Income Tax Act 2007.

#### (e) Property, plant and equipment

Property, plant and equipment are stated at cost less accumulated depreciation.

#### (f) Investments and Advances

Investments and advances are recorded at cost or estimated net realisable value if there has been a permanent diminution in value. The shares in Aotearoa Fisheries Limited have been included at the value established by Te Ohu Kaimoana on transfer.

#### (g) Intangibles

Fishing Quota

Quota received by the group as part of the Fisheries Asset Settlement has been recorded at the value placed on it for settlement purposes. Quota purchased has been recorded at cost. Quota is regarded as having an indefinite useful life because there is no foreseeable limit to the period over which it is expected to be useful. Quota is therefore not amortised. Instead, it is tested annually for impairment.

# Notes to and Forming Part of the Financial Statements

FOR THE YEAR ENDED 30 JUNE 2012

## Emissions Trading Scheme Units

Emissions Trading Scheme (ETS) units acquired by the group are initially recognised at the value established by the Ministry for the Environment. ETS units are regarded as having an indefinite useful life because there is no foreseeable limit to the period over which they are expected to be useful. ETS units are therefore not amortised.

Instead, they are tested annually for impairment. Impairment losses are reflected in the Statement of Financial.

### (h) Inventory

Inventories are valued at the lower of cost and net realisable value.

### (i) Debtors

Debtors are stated at their estimated net realisable value.

### (j) Taiwhenua/Taurahere distribution

Taiwhenua/Taurahere distributions are recorded as a movement in equity as they are received by these organisations on behalf of the members. The distributions are recorded at the time they are declared.

## Changes in Accounting Policies

There have been no changes in the accounting policies during the year. All policies have been consistently applied.

2 INCOME	Consolidated		Parent	
	2012	2011	2012	2011
Income includes;	\$	\$	\$	\$
Dividends	986,956	620,192	1,640,000	1,640,000
Interest Income	434,610	547,126	92,666	223,049
Emission Trading Scheme Units Allocation	-	150,550	-	-
Government Grants	390,853	509,752	390,853	409,752

## 3 EXPENSES

Expenses include;

Depreciation	82,997	81,368	75,107	67,877
Bad and doubtful debts	12,174	-	12,174	-
Audit fees	23,261	21,423	14,293	12,782
Board member honoraria/ committee fees	287,918	246,847	187,822	158,113
Donations/Koha	10,560	13,476	10,560	13,476
Loss on sale of assets	8,608	-	17,407	-
Impairment of Emissions Trading Scheme NZ Units	109,600	-	-	-
Rent	69,200	69,280	60,911	60,037

## 4 FISHING ASSET SETTLEMENT

In accordance with the Māori Fisheries Act 2004, Kahungunu Asset Holding Company has received fishing settlement assets to manage on behalf of Ngāti Kahungunu Iwi. In July 2009 the company received additional settlement of fishing quota, valued at \$15,316,443 by Te Ohu Kai Moana at the date of transfer, plus cash totalling \$320,761 of which \$119,000 was paid to Ohu Tiaki O Rangitane Te Ika A Maui Trust and Te Atiawa ki te Upoko O Te Ika A Maui Potiki Trust to gain agreement on Southern boundary (net settlement \$15,518,204). In 2012, Kahungunu Asset Holding Company Ltd received an aquaculture settlement of \$1,499,845.

## 5 TAIWHENUA /TAURAHERE GRANTS PAYABLE

The board requires certain criteria to be met prior to payments of grants.

The expectation is that each Taiwhenua and Taurahere can fulfil the criteria.

# Notes to and Forming Part of the Financial Statements

FOR THE YEAR ENDED 30 JUNE 2012

6 EQUITY	Consolidated		Parent	
	2012	2011	2012	2011
	\$	\$	\$	\$
Opening Balance				
- Retained earnings	8,123,501	6,361,468	3,103,818	3,053,287
Net Surplus for the year	2,104,578	2,292,436	(92,063)	430,384
Less: Taiwhenua Distribution	(240,000)	(239,420)	(240,000)	(239,420)
Less: Transfer to Emissions Trading Scheme	-	(150,550)	-	-
Less: Transfer to Reserve Fund	-	(140,433)	-	(140,433)
Closing balance Retained earnings	9,988,080	8,123,501	2,771,754	3,103,818
Opening Balance Reserve Fund	1,350,000	1,209,567	1,350,000	1,209,567
Add: Transfer from Retained earnings	-	140,433	-	140,433
Closing Balance Reserve Fund	1,350,000	1,350,000	1,350,000	1,350,000
Opening Balance Fisheries Settlement Assets Reserve	46,658,155	46,658,155	-	-
Add: Aquaculture Settlement	1,499,845	-	-	-
Closing Balance Fisheries Settlement Assets Reserve	48,158,000	46,658,155	-	-
Emissions Trading Scheme Reserve	150,550	-	-	-
Add: Emissions Trading Scheme Allocations	-	150,550	-	-
Closing Balance Emissions Trading Scheme Reserve	150,550	150,550	-	-
Total Equity	59,646,630	56,282,206	4,121,754	4,453,818

## 7 MOTOR VEHICLES & PLANT

### Parent 2012

	Original Cost	Accum Depn	Closing Value
Vehicles	247,761	138,734	109,027
Plant & Machinery	135,477	71,295	64,182
	383,238	210,029	173,209

### Parent 2011

Vehicles	255,719	154,657	101,062
Plant & Machinery	196,968	137,025	59,942
	452,687	291,682	161,004

### Consolidated 2012

Vehicles	285,630	143,468	142,162
Plant & Machinery	151,239	80,342	70,897
	436,869	223,810	213,059

### Consolidated 2011

Vehicles	290,377	165,055	125,322
Plant & Machinery	210,490	142,916	67,573
	500,867	307,971	192,895

## 8 INTANGIBLES

	Consolidated		Parent	
	2012	2011	2012	2011
	\$	\$	\$	\$
Quota Shares	26,730,371	26,730,371	-	-
Emission Trading Scheme NZ Units	40,950	150,550	-	-
	26,771,321	26,880,921	-	-

# Notes to and Forming Part of the Financial Statements

FOR THE YEAR ENDED 30 JUNE 2012

In 2007 and 2010 the Kahungunu Asset Holding Company received quota as part of the Fisheries Settlement. Under the Māori Fisheries Act 2004, the company must not sell its settlement quota until two years after transfer from Te Ohu Kaimoana. After two years, the company can only sell its settlement quota to another iwi or to a member of the Te Ohu Kaimoana group. The quota has been recorded at the value placed on it for settlement purposes.

In addition to the settlements, further quota has been purchased and is recorded at cost.

Kahungunu Asset Holding Company Limited has also received an allocation of New Zealand units as part of the New Zealand Government implementation of the Emissions Trading Scheme. These units were initially recorded at the value established by the Ministry for the Environment. Subsequently they have been impaired down to a value approximating market value.

9 INVESTMENTS & ADVANCES	Consolidated		Parent	
	2012	2011	2012	2011
	\$	\$	\$	\$
<b>Investments in Subsidiaries</b>				
Shares TRONK (100%)	-	-	15,732	15,732
Shares Kahungunu Asset Holding Company (100%)	-	-	2,200,000	2,200,000
	-	-	2,215,732	2,215,732
<b>Shares in other companies</b>				
Aotearoa Fisheries Ltd	19,874,735	19,874,735	-	-
Fiordland Lobster Company	1,453,850	1,453,850	-	-
Napier Mussels Ltd (40%)	-	-	-	-
Aunty's Garden Ltd	-	-	-	-
KAHC Investments Ltd	-	-	-	-
	21,328,585	21,328,585	2,215,732	2,215,732
<b>Advances</b>				
Tamatea Taiwhenua	-	18,485	-	18,485
Napier Mussels Ltd	195,592	195,592	195,592	195,592
Less: Provision	(195,592)	(195,592)	(195,592)	(195,592)
	-	18,485	-	18,485
<b>Amount due from/(to) Subsidiaries</b>				
TRONK	-	-	(15,732)	(15,732)
	-	-	(15,732)	(15,732)
	21,328,585	21,347,070	2,200,000	2,218,485

The Kahungunu Asset Holding Company has received, as part of the 2007 Fisheries Settlement, 7,874 shares in Aotearoa Fisheries Ltd (AFL). This represents a 6.3% holding in that company. The shares have been recorded at the value established by Te Ohu Kaimoana on transfer. The net book value of the Kahungunu Asset Holding Company's shareholding in AFL as disclosed in its Annual Report at 30 September 2011 was \$24,969,398 (2010: \$24,342,565). Under the Māori Fisheries Act 2004, the company must not sell its AFL shares until two years after transfer from Te Ohu Kaimoana. After two years, the company can only sell its AFL shares to another iwi or to a member of the Te Ohu Kaimoana group.



# Notes to and Forming Part of the Financial Statements

FOR THE YEAR ENDED 30 JUNE 2012

The Kahungunu Asset Holding Company owns 131,590 ordinary shares and 100,000 redeemable convertible shares in Fiordland Lobster Company (FLC). This represents a 5.86% holding in that company. These shares have been included at cost. The net book value of the Kahungunu Asset Holding Company's share holding in FLC as disclosed in its Annual Report at 31 March 2012 was \$4,297,351 (2011: \$3,733,886). 100,000 of the 131,590 shares in FLC above were convertible redeemable shares. During the year, the 100,000 convertible redeemable shares were converted to ordinary shares. There was no financial impact of this transaction.

The shares in Napier Mussels Limited (NML) have been transferred to Kahungunu Asset Holding Company at nil value. The fully provisioned advance to NML remains in the society.

Aunty's Garden Limited and KAHC Investments Limited have not traded during the year.

The Society's wholly owned subsidiary companies are registered in New Zealand.

	Consolidated		Parent	
	2012	2011	2012	2011
	\$	\$	\$	\$
<b>10 BANK ACCOUNTS</b>				
Petty Cash	109	214	109	214
Cheque Account	1,829,743	536,833	1,592,833	504,561
Call Account	167,986	177,889	164,371	4,708
Term Deposits	14,099,401	11,769,532	5,150,297	4,757,100
	<u>16,097,239</u>	<u>12,484,469</u>	<u>6,907,610</u>	<u>5,266,583</u>

Deposits totalling \$3,203,903 (2011 \$2,810,324) arise from fishing receipts and are being held in trust subject to resolution of disputes regarding allocation.

## 11 STOCKS ON HAND

Merchandise	2,580	150	2,580	150
	<u>2,580</u>	<u>150</u>	<u>2,580</u>	<u>150</u>

## 12 SETTLEMENT QUOTA RECEIVABLE

Kahungunu Asset Holding Company Ltd holds CRA3 quota to the value of \$1,617,057 which is receivable by Ngāti Kahungunu Iwi Incorporated and on payable as part of an agreed settlement between Ngāti Kahungunu Iwi Incorporated and Rongomawahine Iwi Trust (refer note 14 below).

## 13 MOTOR VEHICLE FINANCES

Total instalments outstanding	-	44,350	-	44,350
	-	44,350	-	44,350
Payable within 1 year	-	44,350	-	44,350
1-2 years	-	-	-	-
2-5 years	-	-	-	-
	-	44,350	-	44,350

## 14 PROVISIONS

The provision includes the CRA3 quota referred to in note 12 above and an amount of \$3,203,903 set aside to settle the dispute with the Rongomaiwahine Iwi Trust in accordance with the deed of settlement signed 21 July 2006. The exact amount of the settlement is not known as the dispute is still to be settled.

## 15 RELATED PARTY TRANSACTIONS

Related parties of the society include directors, subsidiaries and entities in which directors also hold governance positions.

# Notes to and Forming Part of the Financial Statements

FOR THE YEAR ENDED 30 JUNE 2012

The society paid fees to the directors during the year. The value of these are shown in note 3. There were no amounts outstanding at balance date relating to these transactions.

The society receives a dividend from Kahungunu Asset Holding Company Ltd. During the year the Kahungunu Asset Holding Company Ltd paid a dividend of \$1,640,000 to the society. (2011:\$1,640,000)

KAHC Investments Ltd is a subsidiary of Kahungunu Asset Holding Company Ltd. It has been created to hold post settlement quota, such as new species that are introduced into the quota management system, and has not yet traded.

The society collects and distributes funds on behalf of and to constituent Taiwhenua and Taurahere organisations. There are common board members between the society and the Taiwhenua and Taurahere organisations.

The Kahungunu Asset Holding Company paid consultancy fees to Chris O'Reilly Consultancy Limited in which Mr C. O'Reilly a director, has an interest, to Brierley Business Development Ltd in which Mr P Brierley, a director, has an interest and to Mrs C Teariki.

Transactions between Kahungunu Asset Holding Company Ltd and FLC include ACE (annual cash entitlement) sold to FLC, dividends and directors fees received from FLC.

## 16 SUBSEQUENT EVENTS

Subsequent to balance date, Ngāti Kahungunu Iwi Incorporated has made a commitment to play a significant role in the Māori Treaty Water Rights claims process on behalf of the Ngāti Kahungunu Iwi Hapū and Marae which will incur significant legal costs that will have to be funded from Retained Earnings Reserves. (2011: nil).

## 17 COMMITMENTS AND CONTINGENT LIABILITIES

The society agreed to purchase a double hulled waka for \$500,000. At the request of the vendor settlement has been deferred.

The board has made a commitment to put \$1,000,000 cash or in kind towards the Kahungunu Innovation Centre.

## 18 OPERATING LEASE COMMITMENTS

Non-cancellable operating lease rentals are payable as follows:-

	Consolidated \$	Parent \$
Within one year	43,362	35,302
Greater than one year	5,965	2,942
	<u>49,327</u>	<u>38,244</u>

## 19 CONTINGENT ASSETS

As part of the agreement signed between Kahungunu Asset Holding Company Limited and Northland Deepwater Limited, Kahungunu Asset Holding Company Limited is also entitled to a share of the Northland Deepwater Limited profit for the 2011/12 fishing year, paid upon completion of audited accounts. At the date of these accounts, the audited accounts of Northland Deepwater Limited have not been completed so Kahungunu Asset Holding Company Limited's share is unknown.

## 20 INCOME IN ADVANCE

Included in income in advance is an amount of \$108,172 which relates to an unspent grant from JR McKenzie Trust. The total grant received during the year ended 30 June 2012 was \$220,000 of which \$111,828 has been spent. Ngāti Kahungunu Iwi Incorporated is administering these funds on behalf of the Constitutional Working Group.

# Audited Accounts 2011-2012



## To the Members of Ngāti Kahungunu Iwi Incorporated

We have audited the financial statements of Ngāti Kahungunu Iwi Incorporated (the society) and group on pages 25 to 32, which comprise the consolidated and parent statement of financial position as at 30 June 2012, and the consolidated and parent statement of financial performance and statement of changes in equity for the year then ended, and a summary of significant accounting policies and other explanatory information.

## Board of Directors' Responsibility for the Financial Statements

The Board of Directors is responsible for the preparation and fair presentation of these financial statements in accordance with generally accepted accounting practice in New Zealand and for such internal control as the Board of Directors determines is necessary to enable the preparation of financial statements that are free from material misstatement, whether due to fraud or error.

## Auditor's Responsibility

Our responsibility is to express an opinion on these financial statements based on our audit. We conducted our audit in accordance with International Standards on Auditing (New Zealand). Those standards require that we comply with ethical requirements and plan and perform the audit to obtain reasonable assurance about whether the financial statements are free from material misstatement.

An audit involves performing procedures to obtain audit evidence about the amounts and disclosures in the financial statements. The procedures selected depend on the auditor's judgement, including the assessment of the risks of material misstatement of the financial statements, whether due to fraud or error. In making those risk assessments, the auditor considers internal control relevant to the entity's preparation and fair presentation of financial statements in order to design audit procedures that are appropriate in the circumstances, but not for the purpose of expressing an opinion on the effectiveness of the entity's internal control. An audit also includes evaluating the appropriateness of accounting policies used and the reasonableness of accounting estimates, as well as evaluating the overall presentation of the financial statements.

We believe that the audit evidence we have obtained is sufficient and appropriate to provide a basis for our audit opinion.

Our firm has, using staff independent of the audit engagement team, provided business computing assistance during the year. Other than this and our role as auditors we have no relationship with or interests in the society or its subsidiary companies.

## Opinion

In our opinion, the consolidated and parent financial statements on pages 25 to 32 present fairly, in all material aspects, the financial position of the society and group as at 30 June 2012 and its financial performance for the year then ended in accordance with generally accepted accounting practice in New Zealand.

A handwritten signature in blue ink, appearing to read 'Staples Rodway', written over a light blue circular stamp.

**Staples Rodway Hawke's Bay Partnership**  
28 September 2012  
Hastings, New Zealand



**Ngāti Kahungunu Iwi**  
INCORPORATED

# Annual Plan 2012-2013

The Ngāti Kahungunu Iwi Incorporated Annual Plan outlined below describes the key objectives for the iwi between July 2012 and June 2013. The activities are based on the following Ngāti Kahungunu Iwi Incorporated strategies: He Mahere Rautaki Hai Haumanu i Te Reo O Ngāti Kahungunu - The Revitalization of Te Reo o Ngāti Kahungunu, Kahungunu Ki Uta, Kahungunu Ki Tai - Marine and Freshwater Fisheries Strategic Plan and Te Ara Toiora O Ngāti Kahungunu, the Kahungunu Wellbeing Strategy.

---

## **HE MAHERE RAUTAKI HAI HAUMANU I TE REO O NGĀTI KAHUNGUNU STRATEGIC PLAN FOR THE REVITALIZATION OF TE REO O NGĀTI KAHUNGUNU**

---

### **Whakamana i te Pae o Huaki Pouri – Support the revitalization of Ngāti Kahungunu Paepae**

- Develop a report and a plan to increase kaiwhaikōrero and kaikaranga on Ngāti Kahungunu paepae by September 2012;
- Continue to review Te Kawa o Ngāti Kahungunu and develop a report by 13th June 2013; and
- Publish two editions of the Ngāti Kahungunu Iwi Incorporated Te Reo Māori Magazine - Kahungunu Matangi Rau.

### **Develop Kahungunu Leadership Programmes**

- Plan and lead activities during Te Wiki o Te Reo Māori (July 2012); and
- Identify and increase opportunities for Leadership and Growth.

## Research Projects

- Develop a research brief and collect data pertaining to Te Reo Māori statistics within Ngāti Kahungunu. Identify possible research funders;
- Complete the review of the Ngāti Kahungunu Mātauranga Plan by December 2013;
- Develop an implementation plan for the Ngāti Kahungunu Mātauranga Plan by December 2013;
- Review the Te Mahere Rautaki Hai Haumanu i Te Reo o Ngāti Kahungunu by June 2013; and
- Develop an implementation plan for Te Māhere Rautaki Hai Haumanu i Te Reo o Ngāti Kahungunu by June 2013.

## Manage the Ministry of Education Kahungunu Cultural Standards (KCS) Contracts

- Implement the Kahungunu Cultural Standards Project (Te Pae Huarewa) and ensure milestones are met as outlined in the contract;
- Implement the Te Kauhua Project and ensure outcomes meet the milestones as outlined in the contract; and
- Develop resources to support the revitalization of Ngāti Kahungunu reo and tikanga by June 2013. Ensure resources include the development of a Te Reo Website and the development of the second edition of Tihei Kahungunu.

## Cross office support

- Provide cultural support to the Te Ara Toiora and Kahungunu ki Uta, Kahungunu ki Tai Strategies;
- Provide cultural advice and support to the Ngāti Kahungunu Iwi Incorporated Board and Staff;
- Encourage the use of Te Reo Māori in all publications, pānui, and in the tari as much as possible;
- Facilitate an internal Kura Reo by February 2013; and
- Encourage iwi representation at hui of national significance including but not limited to the following hui: Koroneihana (August 2012), Ratana Pā (January 2013), Waitangi Day (February 2013) and Te Matatini (February 2013)

---

## KAHUNGUNU KI UTA, KAHUNGUNU KI TAI MARINE AND FRESHWATER FISHERIES STRATEGIC PLAN

---

### Implement the KKUKKT plan which grows and protects marine and freshwater species and habitats mai i Paritū ki Turakirae, tuahiwi maunga me ngā tuahiwi moana

- Provide written and oral updates to the Ngāti Kahungunu Iwi Incorporated Board when required; and
- Provide a quarterly progress report on the implementation of the Kahungunu ki Uta, Kahungunu ki Tai strategy. Reports due by October 2012, January 2013, April 2013, and July 2013.

## **Establish a fisheries governance infrastructure**

- Schedule and hold regular hui with the Fisheries Management Unit – Te Rōpū Whakamana (TRW) so they are well informed of progress that is being made by the Fisheries Management Unit. Hui dates as follows: November 2012, January 2013, March 2013 and June 2013.

## **Research Programmes**

- Seek external funding to support our research and development programmes as follows: Turned mesh research, Kahungunu Whata, Operation Pātiki, Kaimoana “Marae/Hapū needs”, Various energy projects e.g. Esk River Hydro, Wind generation (with Taiao), Paua reseeding project, Tūna/Eels and Petroleum. In all research we support hapū aspirations. All research projects will involve intense planning with a project plan, budget, communication plan, preliminary literature reviews, press releases, equipment hireage, funding applications and written reports.

## **Develop relationships across sectors with influence over fisheries in the rohe and work towards agreement on local management of fisheries.**

- The Fisheries Management Unit will attend relevant local, national and international conferences and hui as required. A local fisheries management model will be developed and implemented by all local stakeholders;
- Develop and encourage responses to Ministry of Fisheries “Initial Position Papers” and other policies relevant to fisheries and environment on behalf of Ngāti Kahungunu whānau and hapū;
- Develop a policy that supports hapū engagement with fisheries users across all sectors e.g. Hardinge Road 186A temporary closure;
- Develop a policy on hapū involvement and trialing of compliance measures;
- Hold multi-hapū gazettal hui;
- Provide support for joint management protocols including compliance measures; and
- Invite all stakeholders to meet.

## **Develop a Communication Strategy and ‘one-door’ policy that coordinates all fisheries activities across our rohe.**

- Develop and disseminate publicity and press releases as required;
- Contribute to the Hoēa rā newsletter;
- Maintain a webpage; and
- Develop a ‘Hurumanu - BLOG’ to highlight major activities of the Fisheries Unit and discuss topical issues in ‘real time’.

## **Continue to assist hapū development of rohe moana management plans to support local management of fisheries.**

- Ngāti Kahungunu tangata whenua are participating in training and wānanga; and
- The Kahungunu ki Uta Kahungunu ki Tai Strategy is reviewed and revised.

## **Assist hapū to develop joint ventures with the Kahungunu Asset Holding Company (KAHC)**

- Explore opportunities for commercial development, research and joint research funding proposals. Tenders from hapū are offered to KAHC;
- Implement development of hapū rohe moana/awa/waiū management plans in conjunction with business plans; and
- Inform Ngāti Kahungunu tangata whenua of opportunities for training.

## **Share the Kahungunu ki Uta, Kahungunu ki Tai integrated fisheries management model across the Pacific and the world.**

- Plan, lead, organize and control the third annual Kahungunu Fish HOOK SUMMIT on the 7th March 2013.

## **Kahungunu ki Uta, Kahungunu ki Tai Events to celebrate Tangaroa**

- Support Seaweeek 2013 by sponsoring the Te Reo Poetry competition and prize.

---

## **TE ARA TOIORA O NGĀTI KAHUNGUNU KAHUNGUNU WELLBEING STRATEGY**

---

### **Tupeka Kore – Kahungunu Tobacco Free Strategy**

- Administrate and facilitate bi-monthly Hui for the Tobacco Action Group – TAG;
- Hold an event marking the World Smokefree Day;
- Liaise, influence and facilitate agreement across the 3 DHB's that cover the Kahungunu rohe to contribute towards the Kahungunu Tupeka Kore Strategy;
- Develop a Kaupapa Agreement with Quit Group that outlines their contributions towards the progress of the Kahungunu Tupeka Kore Strategy; and
- Survey all Kahungunu Marae to identify their Smokefree status.

### **Whakarauora Rongoā Revitalisation**

- Administrate and facilitate the bi-monthly Hui for the Kahungunu Rongoā Rōpū;
- Facilitate, organize and coordinate Te Kauwae Runga, Te Kauwae Raro Wānanga;

# Annual Plan

- Facilitate, organize and coordinate the Te wiki o Kahungunu Rongoā event;
- Develop a Rongoā Conservation Plan; and
- Survey all Kahungunu Marae to identify Rongoā gardens and Rongoā Practitioners.

## **Whakamoe Patu – Kahungunu Violence Free Strategy**

- Administrate and facilitate the bi-monthly Hui for the Kahungunu Rongoā Rōpū;
- Facilitate, organize and coordinate a Whānau Violence free Symposium; and
- Support a White Ribbon Day event.

## **Te Waka Toiora**

- Administrate and facilitate a bi-annual Hui for representatives from strategies across Te Ara Toiora;
- Facilitate, organize and publish a Te Waka Toiora E-Panui;
- Develop a draft Kahungunu Justice Strategy; and
- Develop a set of Kahungunu Whānau Wellness Indicators.

---

## **NGĀI TAUNAKI SUPPORT SERVICES**

---

### **Increase the vibrancy and wellbeing of Kahungunu whānau**

- Plan, lead and manage the following iwi events and activities that strengthen communal ties to enhance the mana of Kahungunu. Ensure all events are held within budget, communicated well to whānau and executed in an excellent manner in accordance with our planning:
  - Six (5) Matariki events (Jun-Jul 2012)
  - One (1) Kahungunu Sports Awards 2012 (27 Oct 2012)
  - One (1) AGM Pā Sports 2012 (24 Nov 2012)
  - One (1) Kahungunu Waitangi Day (Feb 2013)

### **Increase benefits to members including iwi sponsorship, scholarship and sharing of information.**

- Benefits to members are advertised and policies are available for viewing on the iwi website;
- The application process, criteria and timeframe are clear and easy for whānau to read and understand;
- Monitor and maintain a benefits to members database; and
- Provide bi-monthly Benefits to Members reports to the Board.



## **Communicate with whānau to inform and keep abreast of activities**

- Develop a comprehensive Website to deliver communication opportunities such as an online newsletter, web calendar, interactive Panui page, event management with payment options, Independent Unit usage, blog page etc;
- Publish a 12 month calendar of events; and
- Publish 4 bi-monthly newsletters including the Annual Report.

## **Provide accurate comprehensive financial reports to the CE**

- Maintain a robust financial system;
- Provide tailored financial reports to the senior management team (SMT); and
- Provide accurate financial reports to the Board.

## **Provide internal administrative support to the Chair and CE and tari in general.**

- The Chair, CE, Board and senior management are well supported.

## **Greet and manaaki our people in the tari.**

- Greet our people and treat them with respect

---

## **NGĀ TŌRANGAPŪ POLITICAL**

---

## **Conduct the triennial Ngāti Kahungunu Iwi Incorporated Board Elections consistent with the Constitution.**

- Determine the procedure and brief all involved;
- Advertise the elections process throughout the iwi; and
- Hold the Board elections in accordance with procedures determined by the Board.

## **Improve our relationship with the Hapū Claimant Groups**

- Build our relationship with the Claimant Groups by meeting and communicating with them; and
- Strengthen networks and provide support where needed.

## **Improve Kahungunu representation on Councils**

- Build our relationship with Central & Regional Government Partners.

---

## **NGĀ WHAI RAWA ECONOMIC DEVELOPMENT**

---

## **Improve the economic status of whānau**

## **Develop the Ngāti Kahungunu Economic Development Strategy**

## **Implement the Kahungunu economic development strategy**

# AGM Agenda

## SATURDAY 24TH NOVEMBER 2012

### 9.00am

- Standard Business
- Mihi whakatau
- Hīmene/Karakia
- Minutes of AGM 2011
- Maumahara
- Annual Report 2011-2012
- Chairman's Report
- Audited Financial Statements 2011-2012
- Asset Holding Company Report
- Appoint Auditor

### 10.00am

- Innovation Centre Update

### 10.15am

- Waka Hourua Update

### 10.30am

- Wai Claim Update

### 10.45am

- Research Scholarship Presentation

### 11.00am

- Hīmene/Karakia



Various pictures of whānau at the 2011 Kahungunu AGM Pā Sports Day.



Pictured above are Kahungunu rangatahi at the Rugby World Cup launch in Napier and below Horiana Dagg receives the 2011 Ngāti Kahungunu Overall Sportsperson of the Year Award for her son Israel Dagg.



**Ngāti Kahungunu Iwi**  
I N C O R P O R A T E D

TAIKURA HOUSE 304 FITZROY AVENUE, PO BOX 2406, HASTINGS 4153, NEW ZEALAND  
PHONE 06 876 2718 • FAX 06 876 4807 • TOLL FREE 0800 KAHUNGUNU (0800 524 864)  
EMAIL: [ruth@kahungunu.iwi.nz](mailto:ruth@kahungunu.iwi.nz)  
WEB: [www.kahungunu.iwi.nz](http://www.kahungunu.iwi.nz)



**AGM 24 NOVEMBER**  
**9AM SPLASH PLANET, HASTINGS**