

Hoea rā



Ngāti Kahungunu Iwi
INCORPORATED

Annual Report 2014 - 2015

Published November 2015

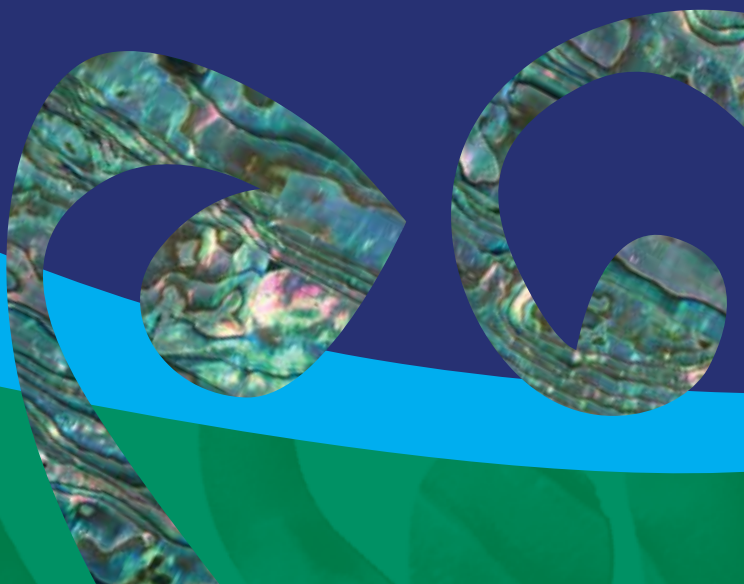


Table of Contents

	Page
Purpose, Vision & Mission	1
Chairperson's Report	2
Chief Executive's Statement	4
Our Year at a Glance	5
Taumata Kahungunu	6
Board Members 2013-2016	7
Staff Members 2014-2015	9
Ngāti Kahungunu Iwi Incorporated Organisation Structure	10
Te Reo, Tikanga & Mātauranga	11
Environment & Natural Resources	13
Te Ara Toiora / Health & Wellbeing	16
Benefits to Members	18
Kahungunu Asset Holding Company Ltd Chairman's Report	25
Kahungunu Asset Holding Company Ltd Directors	30
Ngāti Kahungunu Iwi Incorporated Summary Financial Statements	32
Annual Plan 2015-2016	35
AGM Agenda	39



Purpose, Vision & Mission

Ngāti Kahungunu Iwi Incorporated, with the mandate to represent the people of Ngāti Kahungunu, is the governing body for all aspects of Ngāti Kahungunu Iwi development.

The purpose of Ngāti Kahungunu Iwi Incorporated is to:

- Promote or assist the education of Ngāti Kahungunu Iwi;
- Promote the custody and preservation of the beliefs, customs and language of Ngāti Kahungunu Iwi;
- Promote the social and economic welfare advancement and vocational training of Ngāti Kahungunu Iwi;
- Promote personal, whānau and community health and wellbeing and raise the living standards of Ngāti Kahungunu Iwi;
- Promote high quality communications to and for the benefit of the members of Ngāti Kahungunu Iwi.

Strategic Objectives

In September 2001 consultation with whānau throughout the rohe of Kahungunu occurred. Whānau shared their views, aspirations and desires which helped shape the development of a vision to guide Ngāti Kahungunu into the future. The vision, known as Kahungunu 2026, outlines the vision and mission statements and seven identified strategic objectives to focus on. The Ngāti Kahungunu Iwi Inc. planning framework continues to outline priorities, activities and desired outcomes that link directly to the seven strategic objectives within the Kahungunu 2026 vision.

The seven strategic objectives are:

- Ngāti Kahungunu - Culturally Strong;
- Ngāti Kahungunu - Healthy and Vibrant Whānau;
- Ngāti Kahungunu - Economically Strong;
- Ngāti Kahungunu - Informed and Participating Citizens in the World;
- Ngāti Kahungunu - Independent and Self Determined;
- Ngāti Kahungunu - Healthy, Thriving and Sustainable Environment
- Ngāti Kahungunu - Making our Mark

Vision Statement

"Kahungunu - ki te whaiao, ki te ao mārama"

Achieving excellence in all areas of our lives

Mission Statement

Kia maumahara ki te mana āhua ake o Ngāti Kahungunu

Uphold the absolute uniqueness of the living breath of Kahungunu

"To enhance the mana and well-being of Ngāti Kahungunu Iwi"

Reporting

Ngāti Kahungunu Iwi Incorporated has an obligation to provide an 'Annual Report' for its membership to account for the previous financial year 1 July 2014 – 30 June 2015. This document provides a summary report against the objectives set out in the 2014-2015 Annual Plan. It includes steps taken to increase the registration database and gives an overview of the organisation's performance, including changes in the value of its assets, profit distribution and the summary financial statements.

Chairperson's Report



*E Tama, ka kai koe ki te pananehu,
Haruru ana te whenua i tō hinganga,
E ōmio ana te ngākau o tō iwi whānui*

Tama, your passing has sent reverberations throughout the cultural realms, reminding us of our own mortality. But as described in 'Pinepine Te Kura', a fallen tree will rejuvenate thousands of new seedlings that will flourish for generations. Your legacy and others of your momo, Paraire, Materoa mā, lives on in all aspects of our futures.

Ruiruia ngā kakano! The seeds of Matatini have been sown for 2017. It's been 32 years since we last hosted this event, and we may never host it again in its present form. Activities under the banner of 'Kahungunu, KIA EKE! Kahungunu PLUS!', including economic, educational and employment kaupapa, will be held in the lead up, during, and after the Te Matatini event itself. The Ngāti Kahungunu Rūnanga Arts & Culture Board, with their expertise, will be at the helm of the event itself, while peripheral activities, especially the manaaki manuhiri aspects, will be facilitated by the Iwi.

Mauri tū, mauri ora! We have continued to pursue the innovation centre with the Hastings District Council, and it is now looking more like an innovation campus or park, rather than a single facility, which can incorporate so much more than previously envisaged. As a refresh, it will include the ancient arts, as well as the modern digital onslaught.

Kaitiaki ki te kaiarataki! We have spent too much time, resource and energy, defending the environment and waterbodies, including aquifers, but have found new allies in the NGO and private sectors, who are willing to support our views. These battles are far from over, but we have decided to move from being defenders and protectors of Te Taiao, to become the leaders in this sector, including research and development. As part of the Iwi Chairs Forum, Ngāti Kahungunu Iwi Incorporated is leading the economic sector of water rights, and how these benefits can not only accrue to whānau and hapū, but also how we could boost regional economies. The amalgamation of the five Hawke's Bay Councils has failed in the referendum, which doesn't meet the long-term aims of Ngāti Kahungunu



NKII Board Meeting Te Whanganui-a-Orotū July 2014

Chairperson's Report

Iwi. Having said that, we will act as though there is amalgamation, and achieve it through successful modelling and innovative thinking.

Ko te whānau te papa! We have always seen the whānau as the bastion of hapū and iwi development. The Iwi has an economic engine based on the 2006 fisheries settlement, while hapū are settling land claims, and are rumbling forward to boost marae investment and commercial opportunities. But it is whānau who hold the key to liberating our true potential, and we have focussed on whānau empowerment in terms of accelerated educational, health, cultural, employment and economic outcomes.

Pai tū, pai hinga! Me anga whakamua! Rongomaiwahine Iwi Trust has, according to our legal advice, repudiated the Deed of Settlement agreed to in 2006 and we have therefore cancelled. We had since 2006 tried to facilitate the transfer of resources over to Rongomaiwahine Iwi Trust. This proved impossible because Rongomaiwahine Iwi Trust repeatedly refused to recognise the Deed of Settlement after signing it and asserted that Rongomaiwahine will withdraw from Ngāti Kahungunu Iwi Incorporated and establish its own Mandated Iwi Organisation. The time limit for withdrawal was 2011 under the Māori Fisheries Act, and withdrawal was not completed within this period. Regardless we continued to try to transfer resources under the Deed of Settlement. In recent years a key problem has been the ambiguity of who Rongomaiwahine Iwi Trust actually was, as multiple groups of people claimed to be the Trustees and the relevant government registers were not up to date. Finally we set a deadline for Rongomaiwahine Iwi Trust to accept transfer of the resources. When this deadline was missed, the Deed of Settlement was repudiated by Rongomaiwahine Iwi Trust, so we cancelled the Deed of Settlement after almost 10 years of trying to honour it. We have been informed that the group who claim to be the current Trustees of Rongomaiwahine Iwi Trust intend to bring proceedings in the Māori Land Court. This is disappointing for us, as it must also be for the original Rongomaiwahine negotiators. However, those assets set aside for settlement will be transferred to the Kahungunu Asset Holding Company.

Kupu whakakapi! Finally, it is still a buzz to turn up to the tari, to feel the pulse, the vibrance and the passion of our small, but dedicated staff, ready to take on any matter, great or small, at the drop of a hat; with their bursts of laughter and hoots of delight, but bent on many missions. It is with pride that I present this year's annual report.

Tihei Kahungunu ki te whaiao, ki te ao mārama!



Ngāhiwi Tomoana
Tumuaki/Chairman

Chief Executive's Statement



Kahungunu mana!

Kahungunu ariki!

Kahungunu tapu!

Kahungunu tangata, tēnā rā koutou katoa!

*Ka tangi ki ō tātau mate maha, moe mai, moe mai,
moe mai rā.*

*Ka hoki mai ki a tātau te hunga ora, tēnā tātau katoa i roto i ngā mihi o te
tau hou.*

Tihei Kahungunu!

It is with great pleasure that I present the Ngāti Kahungunu Iwi Incorporated Annual Report 2014-15 to our iwi members. I would like to congratulate the Directors and their staff for their achievements which were in line with our annual plan and attained within our available budget.

During the year we welcomed Jonathan Dick into the role of Director of Environment & Natural Resources; Lesley Tawhai and Connie Collins were farewelled due to the discontinuation of the nationally funded Kaitoko whānau positions and we welcomed Chrissie Hape to the tari, who has been seconded from Child, Youth and Family (CYF) as our Iwi/CYF Partnership Advisor. Alongside our existing tari members I am pleased to lead such a dedicated and talented team and am pleased with our collective accomplishments.

Financially Ngāti Kahungunu Iwi Incorporated ended the year positively with a small surplus, after a forecast deficit. We have put the funds saved aside in an advocacy reserve fund. Again I would like to congratulate the team on this great result that was achieved by attracting external funding for our projects and careful utilisation of our internal funds. The Kahungunu Asset Holding Company has also had a great year, increasing their equity from \$57,124,464 to \$61,567,929. As discussed in the Chairman's report and shown in our Summary Statement of Financial Performance, the Rongomaiwahine provision has been reversed and these funds will now be managed by the Kahungunu Asset Holding Company.

In closing, I would like to thank the iwi Chairman and the Board for their support to myself and the tari during this year. It is with great anticipation that we look forward to meeting the opportunities and challenges ahead.

A handwritten signature in black ink, appearing to read 'Adele Whyte'.

Dr Adele Whyte

Kaiwhakahaere Matua/Chief Executive

Our Year at a Glance

July	Whakamana Wānanga – 163 sponsorships awarded. NKII Board Hui held. 326 new members registered. 10 boxes of pataka given out for tangi.
August	Koroneihana - Funded two buses. 8 sponsorships awarded. 16 boxes of pataka given out for tangi.
September	Waiata Māori Music Awards – Full House. NKII Board Hui held – 205 new members registered. 16 boxes of pataka given out for tangi.
October	Ngāti Kahungunu Sports Awards – Sold Out. Kura Reo Wānanga – 180 students. Hosted Central Region District Health Board's Tukaha Health Conference. 9 boxes of pataka given out for tangi.
November	AGM Pā Sports Day – 4,500 attendance, 1,500 sport participants. NKII Board Hui held – 107 new members registered. 6 boxes of pataka given out for tangi. Ngāti Kahungunu Iwi received Supreme Award at National Māori Language Awards.
December	Iron Māori Event – 3,100 tamariki, rangatahi, pakeke participants. 8 sponsorships awarded.
January	Festive Season. NKII Board Hui held – 45 new members registered. 7 boxes of pataka given out for tangi.
February	Waitangi Day Event – 5,000 attendees. Scholarships opened. 8 sponsorships awarded. 10 boxes of pataka given out for tangi.
March	Fish Hook Summit – 100 attendance. NKII Board Hui held – 108 members registered. 8 sponsorships awarded. 10 boxes of pataka given out for tangi.
April	Ngāti Kahungunu Ngā Tohu Reo Awards – 500. 8 sponsorships awarded. 7 boxes of pataka given out for tangi.
May	Kahuranaki Centenary – 1,200 attendance. NKII Board Hui held – 184 new members registered. 2 sponsorships awarded. 6 boxes of pataka given out for tangi.
June	6 Matariki Events – 15,000+ attendance. 36 scholarships awarded. 14 boxes of pataka given out for tangi.

Taumata Kahungunu



Our esteemed Taumata leaders: Sir Pita Sharples, the late Tama Tūranga Huata, Dr Rangimarie Rose Pere and Professor Piri Sciascia.

Ko te amorangi ki mua,
Ko te hāpai-ō ki muri,
Te tūturutanga mahi pono o te Māori mana motuhake.
E rere e te huata, hopukia!
E rere e te mānuka, tomokia!
Te ārai toto kore o te waka tapu, o Tākitimu!
Te Poho-o-Rākaihākeke! Te Poho-o-Rākaihākeke!
Rāmoto, Kirearā! Rāmoto, Kirearā!
Te tara whānui ki a koe, te tara whāiti ki a au,
Te ōkanga mauri ora ki te rangi,
Te ōkanga mauri ora ki te whenua,

We acknowledge the late Tama Huata who passed away earlier this year. Tama was well known for his excellence and leadership in the field of Māori Performing Arts. He was a valuable member of the Kahungunu Taumata group and worked alongside our other Taumata leaders when called upon to give advice on specific matters.

Board Members 2013-2016



Haami Hilton

Kaumātua Representative

Ko Kahurānaki te maunga
Ko Ngaruroro te awa
Ko Poukawa te waiū
Ko Kahurānaki te marae
Ko Te Rangikoianake te hapū
Ko Te Whatuiapiti te tangata
Ko Te Hāpuku te rangatira
Ko Tākitimu te waka
Ko Ngāti Kahungunu te iwi
Ko Haami Te Kuru Hilton tōku ingoa

Te Whanganui-a-Orotū Taiwhenua Representative

Ko Titi-o-Kura te maunga
Ko Mōhaka te awa
Ko Te Rangihiro te tangata
Ko Te Hārato te marae
Ko Ngāti Hineuru me Ngāti Kahungunu ngā iwi
Ko Ngāti Paarau me Ngāti Whakaari ngā hapū
Ko Mataatua me Tākitimu ngā waka
Ko Karauna Brown tōku ingoa



Karauna Brown



Michael Anthony Paku

Heretaunga Taiwhenua Representative

Ko Kahurānaki te maunga
Ko Ngaruroro te awa
Ko Ruahāpia te marae
Ko Ngāti Hawea te hapū
Ko Tākitimu te waka
Ko Ngāti Kahungunu te iwi
Ko Mike Paku tōku ingoa

Te Wairoa Taiwhenua Representative

Ko Moumoukai te maunga
Ko Nuhaka te awa
Ko Tamakahu, Ko Te Poho o te Rehu ngā marae
Ko Rākaipaaka te hapū
Ko Tākitimu te waka
Ko Ngāti Kahungunu te iwi
Ko Riwai Rill Meihana tōku ingoa



Rill Meihana



John Barry
Heperi-Smith

Tamatea Taiwhenua Representative

Ko Te Rangi-tapu-ā-whata te maunga
Ko Whatumā te waiū
Ko Takitimu te waka
Ko Te Rongo-a-Tahu te marae
Ko Ngāti Kahungunu te iwi
Ko Ngāi Te Kikiri-o-te-Rangi, ko Ngāi Tahu
Mākanui, ko Ngāi Toroiwaho ngā hapū
Ko John Barry (JB) Heperi-Smith tōku ingoa

Board Members 2013-2016



Hayden Hape

Kahungunu ki Tāmaki-nui-a-Rua Taiwhenua Representative

Ko Kaitoki te marae
Ko Ngāti Pakapaka te hapū
Ko Tākitimu te waka
Ko Ruahine te maunga
Ko Manawatū te awa
Ko Ngāti Kahungunu te iwi
Ko Hayden Hape tōku ingoa



Nelson Rangī

Kahungunu ki Wairarapa Representative

Ko Pāpāwai te marae
Ko Ngāti Moe te hapū
Ko Tākitimu te waka
Ko Ngāti Kahungunu te iwi
Ko Nelson Rangī tōku ingoa



Owen Purcell

Taura here Representative

Ko Kahurānaki, ko Te Mata o Rongokako ngā maunga
Ko Ngaruroro te awa
Ko Ruahāpia te marae
Ko Ngāti Hori, ko Ngāti Hawea ngā hapū
Ko Tākitimu te waka
Ko Ngāti Kahungunu te iwi
Nō Kirikiriroa ahau
Ko Owen Purcell tōku ingoa



Noelene Smiler

Taura here Representative

Ko Whakapunake tōku Maunga tipua
Ko Hangaroa, ko Kaitaraha, ko Ruakituri ōku awa
Ko Te Reinga tōku Marae
Ko Tuarenga tōku Whare nui
Ko Hinekōrako tōku Whare kai.
Ko Ngāti Kōhatu, ko Ngāti Ruapani, ko Ngāti Hinehika ōku hapū
Ko Ngāti Kahungunu tōku Iwi
Ko Tākitimu tōku waka
Ko Noelene Mauritania Smiler tōku ingoa

Staff Members 2014-2015

The following structure allows an integrated approach to all activities within the tari. The four units are as follows: Environment and Natural Resources, Te Reo, Tikanga and Mātauranga, Health and Wellbeing and Smart Services. Each unit has a Director who manages their team and ensures their annual plan workstreams align to the 25 year vision and continues to meet the needs of our members.



Dr Adele Whyte
Chief Executive

Earlier this year the Kaitoko whānau contract ended. Connie Collins and Lesley Tawhai finished working at the tari in June. We have had a number of interns and consultants who have assisted in specialist areas to help us meet the goals and aspirations of the tari.



Jonathan Dick
*Director of Environment
and Natural Resources*



**Jeremy Tātere
MacLeod**
*Director of Te Reo,
Tikanga and Mātauranga*



Jenny Smith
*Director of Health
and Wellbeing*



Ruth Wong
*Director of Smart
Services and
Communications Advisor*



Ngaio Tiuka
*Environment and
Natural Resources
Analyst*



Alex-Ann Edwards
*Te Reo Research
Analyst*



**Hamahona
Ambler**
*Huakina Mai
Project Manager*



Dr James Graham
*Kahungunu
Cultural Standards
Project Manager*



Connie Collins
Kaitoko Whānau



Lesley Tawhai
Kaitoko Whānau

Smart Services



Kerrin Fair
*Database
Administrator*



Michelle Ferris
*Senior
Administrator
& Receptionist*



Te Rangi Huata
*Events &
Promotions
Manager*



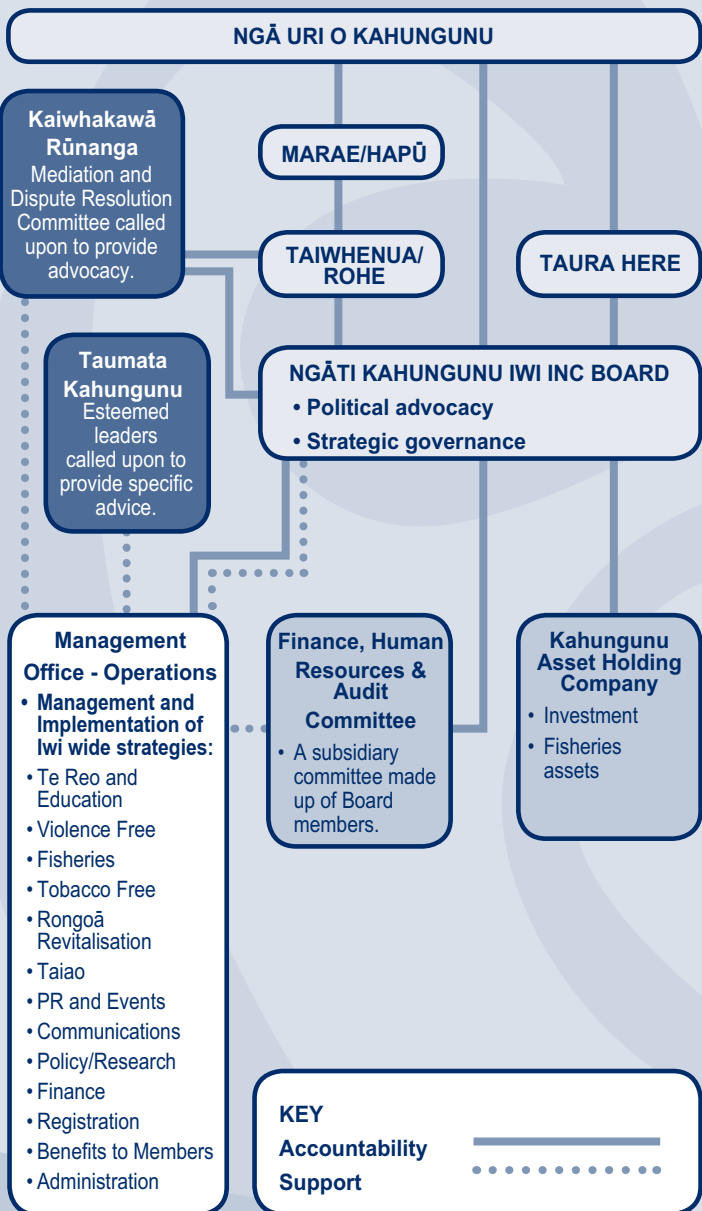
Hine Hape
Finance Officer



Naina Wātene
*Executive
Assistant*

Ngāti Kahungunu Iwi Incorporated Organisation Structure

Ngāti Kahungunu Iwi Incorporated is governed by ngā uri o Kahungunu through its constitutional organisational structure. This diagram depicts the structure of the iwi from marae/hapū to governance and through to management and workstream level.



Te Reo, Tikanga & Mātauranga

Kahungunu matangi rau!

Tangihia ō tātau mate maha,

Tukuna rātau kia moe i te aunga o te moe tē whakaarahia.

Ka waiho mai ko tātau ngā kanohi ora o rātau mā,

Tēnā koutou, tēnā koutou, tēnā koutou.



The late Meroa Haenga, recipient of the Te Ahorangi o Te Kupu (Teacher) Tohu at the inaugural Ngāti Kahungunu Te Reo Awards 2013

Tuatahi ake rā, me tino takoto i konei he kupu poroporoaki ki a Meroa Haenga nō te marama o Poutūterangi ka tīkarohia mai e ngā mana o te pō matirerau. Nō mai anō i te whakarewatanga o te rautaki whakaora reo a Ngāti Kahungunu i te tau 2006 te tautoko mai a Meroa i ngā mahi a Ngāti Kahungunu Iwi Inc. Ko ia tonu te kanohi hōmiromiro i te reo Māori i ā mātau tini kaupapa, pēnei i te puka māheni, *Kahungunu Matangi Rau*, te kaupapa whakatairanga i te kiwaha, *Ketuketu Kīwaha*, me te huhua noa atu o ā mātau kaupapa reo Māori pēnei i tana ako i te karanga i te wānanga *Whakamana i Te Pae o Huaki-pōuri* me tana rangahau i ngā Ngāti Kahungunutanga o te reo Māori. E tino rangona nei tōna korenga, ā, i tana uhunga ka huaina e Jeremy Tātere MacLeod tēnei whakatau-ā-kī nei hai whakamaumahara ki a ia: *Te kete pūrena a Meroa, hai waha i te kī*. Moe mai rā e kui, i te roa o te mate, i te huihuinga o ngā tahito.

Ko tētahi o ngā kaupapa nui kua ara ake i tēnei tau kua pahure nei, ko te pātai āe rānei he mita tonu tō Ngāti Kahungunu? Kua puta i ētahi tino mātanga reo te kōrero kua hemo noa atu te mita ake o Ngāti Kahungunu, ā, i te kaha nui o ngā mārena ki iwi kē me te tau mai a waka kē ki tēnei takiwā mahi ai kua horapa ngā kupu ake a Ngāti Kahungunu. Ki te whāia ko ngā kupu ake, ka kore e kitea, heoi, ki te whāia ko te tangi o te reo, tērā e ora mai anō ki te kaha tā tātau karawhiu. Ko ētahi mātanga kai te kī kē mai he mita ake tō tātau, ā, me kaha tonu tā tātau rangahau i ngā kōrero e kui mā, a koro mā, kai reira kē hoki e pūkai mai ana ngā kōrero. Ahakoa ōna kaitautoko, ōna kaiwhakahē, ko te mea nui kē kua korikori a Kahungunu i tēnei kaupapa, ā, hai ngā tau e tū mai nei ka āta

Te Reo, Tikanga & Mātauranga

whakatauhia he aha oti ngā rerekētanga ā-reo o roto i te iwi nei me ōna kāinga maha. Ko te whāinga, kia whakaputaina he rauemi e whakarārangi ake ana i ngā kōrero kua kitea hai tuku ki ā tātau tamariki mokopuna kia kau ai e ngaro.

Ko ngā whakatutukitanga nui i te tau kua taha ake nei:

1. Te wānanga Whakamana i Te Pae o Huaki-pōuri 2014. 160 ngā taura i tae ake, nō ngā marae katoa, kāre he utu. He āta whakangungu i ngā kaiwhaikōrero me ngā kaikaranga o runga i ngā marae 86 o Ngāti Kahungunu.
2. Te Kura Reo o Ngāti Kahungunu 2014. I tū tēnei wānanga ki Te Wairoa. Koinei te kura reo tuarua. 160 ngā taura i tae ake, ā, i tino whaihua tēnei o ngā kura.
3. Ngā Tohu Reo ā-motu. E rua ngā tohu i roto i Te Kaporeihana ā-iwi o Ngāti Kahungunu, ko te tohu Hapori me te tohu teitei katoa o te pō, Te Tohu Huia Te Reo. Kai hea rā he whakarangatiratanga i tua atu i tērā!
4. Ngā Tohu Reo o Ngāti Kahungunu 2015. 500 ngā tāngata i tae atu, 17 i āta whakanuitia.

Kai te kaha tonu te kōkiri a te wāhanga mātauranga i te rautaki e kīia nei ko *Te Tōpuni Tauwhāinga*. Ko te whāinga matua o roto i taua rautaki rā, kia angitū ā tātau tamariki hai Māori, hai Kahungunu hoki. Kai te kaha te whakawhirinaki atu ki ngā tūmomo kura katoa puta noa i Ngāti Kahungunu kia tino kōkiritia ai te rautaki nei, ā, kia tutuki ōna whāinga, kia puta he hua ki ā tātau tamariki.

Ngāti Kahungunu, kia toaitia atu anō te kōrero, kai roto i ō tātau ringaringa te ora, te mate rānei o tō tātau reo. Ka mate te reo ki te kore e kōrerongia e tātau. Ahakoa whakapaua te hia nui o te moni ki te reo, i te mutunga iho kei ō tātau ngutu te ora o te reo. Koinei tā mātau e akiaki atu nei, kia huri mai rā koutou ki te kōrero i tōu anō reo nā te atua i tuku iho ki a koe e Māori ai koe, e rangatira ai koe i tēnei ao hurihuri.

Kahungunu, kia eke! Kōrerotia tō reo!

Jeremy Tātere MacLeod

Pouarataki/Director, Te Reo, Tikanga & Mātauranga



Te Reo Awards 2015 – Dr Joseph Te Rito, Jeremy Tātere MacLeod & Wi Te Tau Huata

Environment & Natural Resources

Key Highlights for the Environment and Natural Resources Unit

Our Unit continues to work hard on advocating for the rights and interests of Ngāti Kahungunu whānau and hapū. We have worked towards implementing our key goals of:

- Implementing the intent of the Kahungunu Ki Uta Kahungunu Ki Tai Marine and Freshwater strategic plan;
- Developing relationships with organisations which assist us to achieve our goals on the management of our fishery and natural resources;
- Develop our operational capacity to inform decisions about natural resources, and;
- Support hapū planning and their engagement with natural resource managers.

We have commenced a review of the Kahungunu Ki Uta Kahungunu Ki Tai Marine and Freshwater strategic plan. The original plan was launched in 2008. While the content of the plan is still relevant for guiding us on the issues we face, it is timely to seek advice from our hapū and key stakeholders on the priorities and future direction of the strategic plan. We will be doing this over the next year to listen to what people think should be included in the updated plan and to learn more about our hapū environmental and natural resource aspirations. We plan to provide an updated framework for the strategic plan at next year's Fish Hook Summit on 12 May.

For our Unit, we value the relationships we have in place with our environmental champions within Ngāti Kahungunu and the relationships we have with our key stakeholders and partners. We are all under constant pressure to respond to external agency business plans, government policy changes and requests for information. We believe it is important to work on our own goals and aspirations while avoiding potential issues in the future.



Environment & Natural Resources

We have held a series of wānanga on the earth sciences and pāua to improve our capability and capacity to understand the natural world. Our relationship with the Geo-Nuclear Science research institute has been very helpful in building our understanding of natural occurrences, such as earthquakes, geology, groundwater hydrology, tsunamis, climate and sea level changes. We are planning more wānanga in southern Hawke's Bay and Wairarapa. We will also hold more pāua monitoring wananga at Waimārama in partnership with Te Rōpū Āwhina of Victoria University.

We have held meetings with a range of research institutions throughout the year to try and develop new research arrangements to assist us with our research plan. We have got two doctoral candidates working in our rohe researching tuna habitat and mahinga mataitai. We are particularly interested in learning more about what is happening in our iconic tuna fishery and how to improve the health of this fishery for future generations.

We are active in the Hawke's Bay Regional Council TANK (Tutaekurī, Ahuriri, Ngaruroro, Karamū) collaborative planning process to ensure the interests of the hapū are being incorporated in the catchment plan. We are also contributing to the Mohaka Catchment plan. The Board of Inquiry process on the Tukituki Catchment plan was recently completed and the final outcome is significantly better than the original proposal. We've also provided information to whānau and hapū highlighting the trade-offs related to the Department of Conservation land swap for the proposed Ruataniwha Water Storage Scheme.

We appealed to the Environment Court over changes to objectives in the Hawke's Bay Regional Policy Statement. The proposed changes were of significant concern to us as they would have allowed for further water quality degradation. The Environment Court released their decision in March 2015 in support of our appeal. The Environment Court viewed the Councils argument as "fundamentally flawed," "illogical" and inconsistent with the Resource Management Act and the National Policy Statement on Freshwater. The Environment Court decision created an important case law for the protection of freshwater quality in general. The decision is referred to in the Parliamentary Commissioner for the Environment's report "Managing Water Quality: Examining the 2014 National Policy Statement, June 2015" and appears in the Resource Management (Law Association) Journal, April 2015 edition.

We continue to support Dr Adele Whyte and our Chairman Ngāhiwi Tomoana in their work at the Iwi Leaders Group, particularly in the pursuit of our rights and interests to freshwater. We concluded two contracts with the Ministry for the Environment. Rawiri Smith is also participating in the Land and Water Forum on behalf of Ngāti Kahungunu.

During the year a decision was made by our Board to support the use of turned mesh nets on trawlers fishing our inshore quota as an important step to reduce the rate of juvenile fish mortality and to reduce the discard rates for commercial trawling. Hawke's Bay Seafood's, who catch and process the majority of our inshore finfish stocks, have agreed to use the turned mesh nets on their trawlers. We are confident other local fishing companies will initiate similar practises to reduce the juvenile mortality rate. We are also investing in more net innovations research with a view to developing a sustainably effective trawl net for our mixed fishery.

The Government is openly supportive of petroleum and mineral activity in our region. We have been approached by a number of companies looking to undertake off-shore seismic surveys. We are encouraging companies

Environment & Natural Resources

to use our own marine mammal observers when undertaking their seismic surveys. For petroleum and minerals prospecting tāngata whenua have little recourse, however through the Crown Minerals Act, “defined areas of land of particular importance to the mana of the iwi or hapū” can be protected if noted on the Petroleum or Mineral work programmes. We work on a “total transparency” approach and will keep our members informed of what’s happening in this sector.

Key Focus for the Year to 30 June 2016

Our goals for the current year include:

- Advocate for Ngāti Kahungunu objectives and values to be incorporated into natural resources decision making and policy developed by local, regional and central government.
- Undertake a review of the Kahungunu Ki Uta Kahungunu Ki Tai strategic plan.
- Support hapū to develop and progress hapū management plans to enhance their role as Kaitiaki of the natural resources.
- Develop quality relationships with organisations to assist us to achieve our natural resource objectives which help to build the capacity and capabilities of our people.

We particularly want to investigate ways for supporting the work of our Tāngata Kaitiaki and the challenges they face in having to manage the customary fisheries on a voluntary basis. Although we reconvened a meeting of Te Rōpū Whakamana during the year, it is clear we need to get better at integrating how we manage our wide interests in the fishery. We are interested in exploring ways of building our Tāngata Kaitiaki capability to engage in fisheries management issues. I look forward to receiving feedback from everyone about how we achieve this during the review of the Kahungunu Ki Uta, Kahungunu Ki Tai Marine and Freshwater Fisheries strategic plan.

We will also seek to run wānanga and hui throughout the year, to share information and to provide advice on key issues relating to the environment and natural resources.

Mā te Atua koutou e manaaki, e tiaki i ngā wā katoa.

Jonathan Dick
Pouarataki/Director, Environment & Natural Resources



TE ARA TOIORA Ngāti Kahungunu Wellbeing Strategy

Ngāti Kahungunu Iwi supports strong, vibrant, healthy whānau and hapū.

When Ngāti Kahungunu sings of the precious treasure “Pinepine te kura” we acknowledge the taonga of all our mokopuna – we sing of their need to be safe, healthy and well so that the whānau, hapū and iwi can flourish.

Pinepine te kura

Little tiny kura, the kura of renown

Hau te kura

The kura who came from below Awarua

Whanake te kura i raro i Awarua

A noble kura, a famous kura

Ko te kura nui, ko te kura roa

The kura from afar off, the kura of Tūhaepō!

Ko te kura o tawhiti nā Tūhaepō

It is the wisdoms of ‘Pinepine te kura’ that guides the direction and the approach of the Te Ara Toiora (Kahungunu Health & Wellbeing) Directorate. Our vision has always been focused on a ‘Strong, Vibrant, Healthy Whānau, Hapū & Iwi’.

The aims of Te Ara Toiora o Ngāti Kahungunu

1. Whānau in Kahungunu will be healthy, vibrant and enjoy a high standard of living.
2. Whānau have access to high quality services.
3. Active Whānau are a quality resource for wellbeing.
4. Whānau have an increased knowledge (Mātauranga) and understanding of wellbeing.
5. Whānau utilise seamless services that contribute to whānau wellbeing.

Whakawhanaungatanga

‘Building Relationships’

During the year ended 30 June 2015 the Te Ara Toiora (Kahungunu Health and Wellbeing) Directorate consisted of three staff members, the Director and two Kaitoko whānau workers, and a network of several individuals, groups, organisations and agencies who have worked together to help us fulfil the aims of Te Ara Toiora o Ngāti Kahungunu. The main mahi of the directorate has been to forge strategic alliances and partnerships with our government partners to invigorate the Treaty of Waitangi Principles of Partnership, Participation and Protection.

This year we have put a great amount of time into building relationships and securing partnership arrangements to enable whānau to lead in the decision making of their own health and wellbeing. We are pleased to report that we secured a three-way working partnership with Hawke’s Bay District Health Board and Health Hawke’s Bay (Primary Health Organisation) to work on a joint Māori Health Strategy (MAI) to support the goals and aspirations of each of our organisations which is centered around whānau wellbeing. We also secured a three-year secondment arrangement with the Ministry of Social Development Head Office enabling us to have Chrissie Hape join our team to assist us in the development and implementation of the Kahungunu Repatriation of whānau and Restorative Justice Pathway. This year the Ngāti Kahungunu Iwi Incorporated Board adopted the Governments Economic Development Strategy ‘He Kai Kei Aku Ringa’ which provides a framework to support and facilitate the establishment of ‘Whānau Economic Pathways’.

Kahungunu Whānau Representation

'A Kahungunu View, Kahungunu Kaupapa, Kahungunu Mandate'

As an Iwi Authority, Ngāti Kahungunu Iwi Incorporated is often approached and asked to partner or represent the iwi on a number of local and central government Boards. For this purpose a number of volunteer, appointed and elected iwi representatives sit on various boards and represent the values, aspirations and view points of the iwi and also keep the Ngāti Kahungunu Iwi Incorporated Board abreast of issues, concerns and opportunities. This year the iwi has been proactive in developing policies to protect and manaaki our Kahungunu whānau who take on the responsibility of representing the iwi on these boards. I would like to acknowledge and thank our Kahungunu representatives for their tireless commitment, contributions, tautoko and manaaki to the Kahungunu Whānau Whānui, and their advocacy by upholding the mana and mana ā kī of Ngāti Kahungunu Iwi.

Group or organisation	Representatives
Hawke's Bay District Health Board	Board Members: Tatiana Cowan Greening, George Mackey, Trish Giddens, Ana Apatu, Kerri Nuku, Na Raihania, Lynlee Aitcheson
Māori Relationship Board members	
Health Hawke's Bay (Public Health Organisation)	Board Members: Mike Paku, Lewis Ratapu, Trish Giddens (Chair).
Sport Hawke's Bay	Board Member Kevin Tamati

Kaitoko Whānau

In June this year the Kaitoko Whānau programme which was designed to support, facilitate, advocate and manaaki whānau, was ended. Ngāti Kahungunu Iwi acknowledges our wonderful kaimahi that successfully championed this mahi on behalf of over 100 families in need. Our workers throughout the rohe of Ngāti Kahungunu were as follows: Te Paea Whakatope in Te Wairoa, Connie Collins and Lesley Tawhai in the Te Whanganui-a-Orotū and Heretaunga areas, and Kathy Mihaere in Tāmaki-nui-a-Rua. The work these kaimahi provided helped to strengthen whānau and ensure that they were ably accessing family support services and provisions provided by the government in our communities.

Strategic Planning

We have continued to work on the following iwi strategies which outcomes help us reach our Te Ara Toiora vision. Whakamoe Patu - Violence Free, Tupeka Kore - Tobacco Free, Whakarauora Rongoā - Rongoā Revitalisation and Māori Health Strategies - Hawke's Bay District Health Board 'Mai'. We are pleased also to announce this year that our Ngāti Kahungunu Sport Awards was Alcohol free.

With the tautoko and manaaki of our Kahungunu Whānau, Te Ara Toiora o Ngāti Kahungunu (Ngāti Kahungunu Wellbeing Strategy) has a strong and steady heart beat. I acknowledge and thank the mahi, contributions, dedication and commitment of whānau in progressing Te Ara Toiora o Ngāti Kahungunu - Kahungunu Living Longer, Tihei Kahungunu!

Ko te mea nui o te ao ko te whānau.

The most important thing in the world is whānau

Jenny Smith

Pouarataki/Director, Te Ara Toiora/Health & Wellbeing

Benefits to Members

SUPPORTING OUR MEMBERS

Registered tangata whenua members of Ngāti Kahungunu Iwi Incorporated are entitled to apply for benefits to members. These benefits include scholarships, sponsorships, training opportunities, employment information, free admission to iwi events, and access to a number of opportunities that are advertised from time to time such as the 2Degrees Iwi Connect initiative. This year we have improved the way members access these benefits. All of our benefits can be accessed online on our website www.kahungunu.iwi.nz.

The following report was prepared by the Smart Services team to show what benefits the organisation has provided for its iwi members for the year ended 30 June 2015.

COMMUNICATIONS

Ngāti Kahungunu Iwi Incorporated is dedicated to communicating with its membership to keep whānau abreast of events & activities that enhance and strengthen the whānau. We communicate with our whānau in a number of ways including through this Annual Report booklet. We are always looking to increase our communication options. This year we refreshed our website to enable more activity and connectivity. Listed below are some of our successful methods of communications for the year ended 30 June 2015.

- A Calendar of events was posted to every registered member household in July 2014;
- 250 pānui were sent out through our pānui ki te iwi email network to 500+ subscribed individuals and organisations;
- 250 panui were advertised via Radio Kahungunu;
- Six Board Summary papers were posted online the week after each of our Board meetings held over the year;
- An AGM was held in November 2014 at the Splash Planet complex in Hastings which attracted over 2000 iwi members;
- A toll free phone continues to be available - 0800 Kahungunu [524 864]; This year we fielded a number of calls from whānau living outside the Kahungunu rohe, or whānau who phoned in our office using a mobile phone;
- We have friendly staff at our office who are willing to help and assist whānau who come into the office or who phone or email in;
- We released 40 media statements through our communication networks;
- 40 Media Releases and Advertisements were posted into several newsrooms and newspapers and placed on internet media sites for worldwide distribution;
- Several Te Reo videos were created and placed onto the iwi website and are available from YouTube.

REGISTRATIONS

Ngāti Kahungunu Iwi Incorporated is a Mandated Iwi Organisation and is required to keep a Registration Database of its membership. Our goal this year was to increase our database by 1000 members. A total of 975 new members registered in this financial year, 25 short of our goal, but we are pleased with this result. We currently have 24,236 registered members. We continue to strive to update information for iwi members who move house without informing us. This is a great task so although it is important to increase our membership, it is just as important that we keep our current membership database updated.

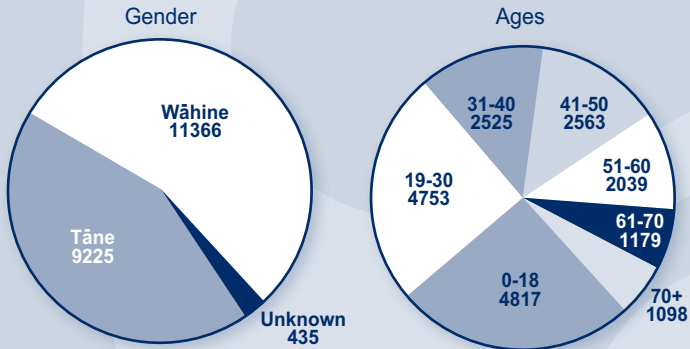
Benefits to Members

New Members Summary by Area Report:

Members Entered between 01/07/2014–30/06/2015

No Taiwhenua/Taura here/Ngā Mataawaka	2
Heretaunga	159
Tāmaki-nui-a-Rua	123
Tamatea	27
Wairarapa	220
Te Whanganui-a-Orotū	61
Wairoa	321
Ngā Parirau o te Ika	31
Te Waipounamu	8
Te Upoko o te Ika	18
Te Raki/Tāmaki-Makaurau	5
Grand Total	975

Kahungunu - Statistics of Registered Tangata Whenua Members



EVENTS

Ngāti Kahungunu Iwi Incorporated strives to produce and sponsor events that strengthen whakawhanaungatanga, manaakitanga and kotahitanga with a whole of Ngāti Kahungunu approach.

Waiata Māori Music Awards September 2014, Hastings Sports Centre, Hastings

This national event seeks to develop, encourage and honour the achievements of outstanding traditional and contemporary music composition and performance annually. Ngāti Kahungunu Iwi is proud to sponsor this superb platform for music excellence.

2014 Kahungunu Sports Awards, Hastings Sports Centre, Hastings

Mounted annually in October to acknowledge Kahungunu sports champions on the local, national and world stage these awards have sold out every year. Our guest speaker was rugby player Robbie Fruen and 2014 Kahungunu Sportsperson of the Year was rowing gold medallist Fiona Bourke.

Iron Māori December 2014, Ahuriri, Napier

Thousands huffed and puffed as they swam, ran and cycled across the course in and around Napier. For 600 youngsters in the Tamariki Rangatahi event and 2500 who took part in the big half marathon the next day, it was a sense of pride when they crossed the finish line. Ngāti Kahungunu Iwi is pleased to sponsor this wonderful event created and organised by Heather & Wayne Skipworth, Missy & George Mackey, Lee Grace and his partner Kiri Bird.

Benefits to Members

Kahungunu AGM Pā Sports Day 2014, Splash Planet, Hastings

In November we hosted the best sports day ever with over 1,500 players from 20 marae competing in netball, 3 on 3 basketball, volleyball, kiwi sports and Kī-o-rahi. This year we took our AGM meeting outdoors into Splash Planet and completed our business in under an hour. Hundreds of happy families came to join us from Hamilton, Wellington, Masterton, Dannevirke and Wairoa.

Kahungunu Waitangi Day 2015, Hawke's Bay Sports Park, Hastings Big 9 Waitangi Day Celebrations 6 February 2015 Hawke's Bay Sports Park, Hastings

Cold wintery gale force winds did not deter thousands turning up to the Big 9 Waitangi Day celebrations this year to mark 175th anniversary of signing the Treaty of Waitangi. Teams competed in volleyball, netball, 3 on 3 basketball, Kī-o-rahi and a rugby league carnival for kids. Food sellers at Bite of the Bay were kept busy all day and feature artist Sammy J was popular with the rangatahi.

Matariki June 2015, Kahungunu wide

Our 15th annual Matariki celebrations again attracted thousands of people to welcome the Māori new year with fun, feasting and festivity. Hayden Hape and his team of 40 volunteers had the crowds rocking in Dannevirke. Zac Makoare and his team braved the elements and put on a great night at Te Aute College. Over in Flaxmere thousands came out to enjoy a great night of entertainment and fireworks and we're grateful to our volunteer organisers Geraldine Cowan, Sid Maaka and Jolleen Morrell. In Napier families braved the rain and organisers Te Whanganui-a-oro-tū Taiwhenua and Ngā Manu Kura o tē Tairāwhiti ensured the night was fun and enjoyable. Wairoa again had a full week of activities with a huge turnout for the closing night. Thanks to local organiser Sara Bird and her team. Tirau Te Tau put together a great programme in Masterton for Matariki and she intends to build on this over the coming years. We appreciate our funders Te Puni Kōkiri, Trust House, Infinity Foundation, Endeavour Foundation, Sport Hawke's Bay and Creative Communities.

Our Events Commitment

By Kahungunu, For Kahungunu, For Everyone, Forever !

GENERAL SPONSORSHIPS

The purpose of the iwi sponsorship is to encourage and to recognise the pursuit of cultural and sporting excellence by Ngāti Kahungunu. Cultural and sporting pursuits are an important aspect of personal, whānau, hapū and iwi development. For this purpose Ngāti Kahungunu Iwi Incorporated allocates a limited amount of funding toward sponsorship each year.

The following recipients received funding in the 2014-2015 Financial Year:

Recipient Name	Event of Activity	Value
Taneal Paenga	2014 International Basketball Classic Tournament	\$500.00
Patti Grogan	2014 Commonwealth Games	\$500.00
Sam Hiha	2014 National Hockey Tournament	\$250.00
Courtney Gettins	NZ Junior White Sox Canadians Fast Pitch Tournament	\$500.00
Melanie Gettins	2014 Womens World Softball Championships	\$500.00
Danielle Paenga	2014 International Basketball Classic Tournament	\$500.00

Benefits to Members

Recipient Name	Event of Activity	Value
Manaia Canterbury	2014 Waka Ama World Sprint Championships - Brazil	\$500.00
Jahvaughn Manaena	2015 Waka Ama World Sprint Championships - Brazil	\$500.00
Jeisharn Manaena	2016 Waka Ama World Sprint Championships - Brazil	\$500.00
Ruanui Winitana	2014 U14 NZ Basketball	\$500.00
Emma Houkamau	2014 Canada Cup Softball Tournament in Canady	\$500.00
Aidan Te Wake-Hope	International Crossfit Event	\$350.00
Tairea Thompson	NZ U15 Baseball Tournament in Mexico	\$500.00
Aroha Treacher	Media Machine - Kahungunu Video Competition	\$650.00
Patarihia Smith	2014 National Secondary schools Kapa Haka	\$150.00
Himiona Grace	2014 Gala Awards Winner @ Wairoa Māori Film Festival	\$1,000.00
Terina Tawhara	2014 Waka Ama World Sprint Championships - Brazil	\$500.00
Alison Beal	Media Machine - Kahungunu Video Competition	\$650.00
Benjahmon Cowan	2016 Waka Ama World Sprint Championships - Brazil	\$500.00
Kopiri Williams Downes	2014 U15 National Hockey Tournament	\$250.00
Savanna Hiha	2014 National Hockey Tournament	\$250.00
Mathew Hiha	2014 National Hockey Tournament	\$250.00
Wharaki Trust	2014 HakaFit 10's	\$500.00
Amy Scott	2014 World R4 Rafting Champs	\$500.00
Aperahama Hurihanganui	2014 World R4 Rafting Champs	\$500.00
Racheal Downs	Takitimu Womens Team - National Māori Hockey Tournament	\$250.00
Gabrielle Tomoana	NZ Māori Under 21 Hockey Tournament	\$250.00
Anthony Hodgson	U15 National Boys Hockey Tournament	\$250.00
Aritaku Robens	2014 World Rafting Championship - Brazil	\$500.00
Tu Rongo Tomoana	Manager NZ U21 Junior Māori Mens Hockey Tournament in Queensland	\$250.00
Ricochet Trampoline Club Inc	World Trampoline Championships in Florida	\$250.00
Te Hika A Papauma Marae	Te Matau-a-Māui Waka event in Wairarapa	\$1,000.00
Amy Scott	2014 World R4 Rafting Champs	\$500.00
Sport Hawke's Bay	2014 Wairoa Sport Awards	\$300.00
Phenix Wairau-Pomana	2015 U16 Boys Basketball tour to Australia	\$500.00
Peter Wilkie	NZ U17 Boys Basketball tour to Australia	\$500.00
Anecia Wilkie	NZ U18 Girls Basketball tour to Australia	\$500.00
Te Matau-a-Māui Voyaging Trust	2015 Art Deco Weekend	\$1,000.00
Richmond School	2014 Ngāti Kahungunu Primary School Kapa Haka hosts	\$1,000.00
Iron Māori Limited	Kaumātua Iron Māori 2015	\$1,000.00
Kahurānaki Marae	2015 DIY Marae	\$1,000.00
Hana Stevenson	Family fun day in Flaxmere - Anti bullying event	\$250.00
Parearau Kapa Haka Group	2015 Kahungunu Matatini participants	\$1,000.00
Te Kura Kaupapa Māori O Ngāti Kahungunu Ki Heretaunga	2015 Kahungunu Matatini participants	\$5,000.00
Te Rerenga Kōtuku Culture Club	2015 Kahungunu Matatini participants	\$5,000.00
Touch Hawke's Bay	2015 HB U21 Mixed Touch; Nationals	\$1,000.00
Karamu High School	2015 National Secondary School Ki O Rahi	\$1,000.00
Selah Hart	NZ Māori National Netball Tournament	\$250.00
Te Taiwhenua O Heretaunga	Matariki Living Taonga Awards 2015	\$1,000.00
HB Māori Teachers Association	2015 Te Matau-a-Māui Ngā Manu Kōrero hosts	\$500.00

Benefits to Members

WHAKAMANA I TE PAE O HUAKI-PŌURI WHAIKŌRERO/KARANGA WĀNANGA SPONSORSHIPS

The following 163 taura were successful recipients of the sponsorship set aside for the Whakamana i Te Pae o Huaki-Pouri Whaikōrero/Karanga Wānanga held at EIT Te Aho a Māui, on the 13-17 July 2014. Each participant had to register and apply to be a recipient of this wānanga. A number of whānau not named on the list below also attended the wānanga.

1	Adrian Wagner	56	Horiana Johns	110	Miriama Hammond
2	Ahuriri Houkamau	57	Horiana Taoho	111	Miriama Paul
3	Alex-Ann Edwards	58	Hunny Williams	112	Mitirina Tipene
4	Amiria Te Whaiti	59	Huria Robens	113	Narina Tumarae
5	Anahera Pederson	60	Irihapeti Roberts	114	Nathan Paku
6	Angela Houkamau	61	Jaamin Pere	115	Naumai Paku-Taurima
7	Angela Smith	62	Jackie Snee	116	Ngarangi Thompson
8	Anthony Tipene	63	Jane Whareherehere	117	Nina Garnham
9	Araraina Tipene	64	Janice Keepa Kahukiwa	118	Orine Gillies
10	Arron White	65	Jason Paku	119	Pahemata Robinson
11	Ata Te Tomo	66	Jason Roberts	120	Paula Te Iwimate
12	Atareta Savae	67	JB Heperi Smith	121	Pauline Symes
13	Atareta Smith	68	Jemasin Te Huia	122	Perry Belmont
14	Bae Hamlin	69	Jen Robin	123	Petera Hakiwai
15	Bayden Barber	70	Jim Taotahi	124	Piripi Smith
16	Beauman Paul	71	Joanne Heperi	125	Pohatu Paku
17	Ben Riwai-Couch	72	Jorgette Maaka	126	Pua Taumata
18	Benita Cairns	73	Jorian Tangaere	127	Rachel Paku
19	Bennett Morris	74	Josh Rakatairi	128	Rakai Hakeke
20	Brian Gregory	75	Joy Pekepo		Whauwhau
21	Bryce Carroll	76	Kara Kire	129	Rangimaria Taite
22	Burton Campbell	77	Karanema Bartlett	130	Rangiteaoreere Hepi
23	Carlene Te Tau	78	Karen Paenga	131	Rauwena Barlow
24	Christine Ammunson	79	Karena Thompson	132	Rawinia Hape
25	Chrystal Edwards	80	Kamia Mihaere	133	Rewa Ripia Cripps
26	Danica Makea	81	Keri Anne Stephens	134	Robert Barlow
27	Daphne Moeke	82	Kirstyn Harrison	135	Rocky Ropiha
28	Darlene Carroll	83	Koia Whatuira	136	Ruth Pentland
29	Darryl Miller	84	Kumeroa Samuels	137	Ruth Wong
30	Daryl Harrison	85	Kurschteen King	138	Sharn Carroll
31	Demetrius Potangaroa	86	Lee Karaitiana	139	Simone Baker
32	Diane Hilton	87	Lee Waerea	140	Stacey Shailer
33	Donna Gillies	88	Lena Pene	141	Susan Tipuna
34	Donna Whitwhiti	89	Liam Kawana	142	Sylvia Smith
35	Ed Karauria	90	Liz Graham	143	Taiporutu Huata
36	Elizabeth Ratima	91	Louise Hawea	144	Takuta Doc Ferris
37	Elizabeth Waiwiri	92	Mahina-a-rangi Huata	145	Tami Manihera
38	Esther Foster		Harawira	146	Tangi Taunoa
39	Frances Reiri Smith	93	Mahinarangi Lawrence	147	Tania Namana
40	Fred McRoberts	94	Maioha Allen	148	Tania Pene
41	Gaye Hawkins	95	Mana Hazel	149	Tania Ratapu
42	George Reti	96	Manu Vercoe	150	Te Amokura Gaffey
43	Georgina Waina	97	Marama Tiakitai	151	Te Ao Rore
44	Haami Hilton	98	Marei Apatu	152	Te Atakura Mokatupu
45	Haana Wilcox	99	Marewa King	153	Te Hira Whati
46	Hamahona Ambler	100	Maria Voice	154	Te Korou Roberts
47	Hawea Marsh	101	Marino Tiuka	155	Te Ohomauri Barlow
48	Hayden Hape	102	Mary Clark	156	Te Orihau Karaitiana
49	Helen Barlow	103	Mary Martin	157	Tirau Te Tau
50	Henare Manaena	104	Matilda Hepi	158	Tiwana Aranui
51	Hera Tahau	105	Mavis Grant	159	Toni Huata
52	Hinehau Whitwhiti	106	Memory Te Whaiti	160	Tracey Ngarotata
53	Hinematawaia Vercoe	107	Mere Jenkins	161	Warren Hamlin
54	Hiraani Maaka	108	Michaela Prebble	162	William Robinson
55	Hoani Paku	109	Michelle Ferris	163	Zaine Taite

Benefits to Members

SCHOLARSHIPS

Ngāti Kahungunu Iwi Incorporated continues to acknowledge that education is the key to personal, whānau, hapū and iwi development. This year the board allocated \$40,000 toward education scholarships. This fund was split into three areas as follows: General Scholarships \$15,000 awarded to 30 students who received a maximum of \$500 each; Research Scholarships \$15,000 awarded to three worthy Postgraduate Researchers who received a maximum of \$5,000 each; and Internship Scholarships \$10,000 awarded to a number of interns who worked in support of iwi mahi. This year 85 applications were received and we have listed below the successful recipients. This year Victoria University matched the funds that the iwi issued to successful Kahungunu students studying at Victoria University which allowed the organisation to provide a further \$500 scholarship to 3 extra recipients.

General Scholarship Recipients

Name	Taiwhenua/ Rohe	Qualification sought	Value
Michelle Brown	Wairoa	Masters of Indigenous Studies	\$500.00
Joshua Firmin	Wairoa	Bachelor of Medicine - MBChB	\$500.00
Yolande Gallagher	Tamatea	Masters of Indigenous Studies	\$500.00
Turoa Gallagher	Te Wai Pounamu	Bachelor of Dental Surgery	\$500.00
Betty Goodger	Wairarapa	Bachelor of Nursing	\$500.00
Aria Graham	Heretaunga	PHD Nursing	\$500.00
Asti Jamin Grard	Wairarapa	Bachelor of Medicine and Surgery	\$500.00
Daniel Hapi	Heretaunga	Bachelor of Computer Graphic Design	\$500.00
Leanda Harris	Heretaunga	Bachelor of Medicine and Surgery	\$500.00
Steffanie Jury	Wairarapa	Bachelor of Medicine and Bachelor of Surgery	\$500.00
Courtney Kete	Tamatea	Bachelor in Māori Resource Mgt and Māori Studies	\$500.00
Te Mete Lowman	Wairoa	Bachelor of Education (Teaching)	\$500.00
Jessica Lynch-Larkin	Te Whanganui a Orotu	Bachelor of Medicine and Bachelor of Surgery	\$500.00
Perry Belmont	Wairoa	Bachelor of Teaching Māori Med/Dip Māori Education	\$500.00
Adam Taraia Mcdonald	Heretaunga	Masters Public Health	\$500.00
Logan Motu	Heretaunga	Bachelor of Health Science	\$500.00
Tia Neha	Wairoa	PHD Psychology	\$500.00
Mica Paewai	Tamatea	Bachelor of Arts Major in Psychology and Minor in Anthropology	\$500.00
Hamuera Pere	Heretaunga	Bachelor of Medicine and Surgery	\$500.00
Moananui Rameka	Wairoa	Masters in Business Administration	\$500.00
Sarah Reo	Heretaunga	Masters in Business Administration	\$500.00
Michelle Roestenburg	Wairoa	PHD in Indigenous Studies	\$500.00
Jane Seymour	Heretaunga	Master of Arts in Māori Development	\$500.00
Lyrae Smith	Heretaunga	Bachelor Business Studies	\$500.00
David Te Aoepi Kara France	Tamatea	Bachelor of Art Bachelor of Laws	\$500.00
Gabriel Tomoana	Heretaunga	Bachelor of Science	\$500.00
Heni Unwin	Wairoa	Diploma in Marine Studies	\$500.00
Kelly Waho	Heretaunga	Bachelor of Nursing	\$500.00
Hayley Louise Wilton	Wairarapa	Bachelor in Social Work	\$500.00
Matiu Workman	Wairarapa	Masters in Peace and Conflict Studies	\$500.00

Benefits to Members

Name	Taiwhenua/ Rohe	Qualification sought	Value
Antoinette Hapuku-Lambert	Heretaunga	Masters in Teaching and Learning	\$500.00
Anne Waapu	Heretaunga	Bachelor of Science Honours	\$500.00
Alandria Puna	Te Whanganui A Orotu	Bachelor of Commerce, Double Major in Māori Studies, Accounting	\$500.00

Research Scholarship Recipients

Name	Taiwhenua/ Rohe	Qualification sought	Value
Bryson Robert	Wairoa	Masters of Electrical and Electronic Engineering	\$5000.00
Diana Cruse	Heretaunga	Masters of Education	\$5000.00
Raiha Huata	Heretaunga	Masters of Education	\$5000.00

Internship Recipients

Name	Taiwhenua/ Rohe	Qualification sought	Value
Hemi Wong	Heretaunga	Health & Wellbeing Survey/Research	\$2000.00
Tyne Nelson	Tamatea	Waste Management and Recycling	\$5000.00
Mahinaarangi Huata- Harawira	Heretaunga	Te Reo me ona Tikanga	\$2500.00
Wawaro Te Whaiti	Heretaunga	Te Reo me ona Tikanga	\$5000.00
Lewis Te Whaiti	Heretaunga	Te Reo me ona Tikanga	\$4000.00
Josh Rakatairi		Te Reo me ona Tikanga	\$5000.00

Kahungunu Asset Holding Company Ltd Chairman's Report



Kahungunu, He tangata ahuwhenua, mōhio ki te whakahaere I ngā mahi o uta me ō tai.

Tihei Kahungunu!

It is my pleasure to provide a report of the Kahungunu Asset Holding Company Limited (KAHC) results for the year ended 30 June 2015.

Background

KAHC was established in 2005 by Ngāti Kahungunu Iwi Incorporated (NKII) to receive and manage the Treaty of Waitangi fisheries settlement on behalf of Ngāti Kahungunu.

The KAHC has the vision of building a “successful business and economic profile for Ngāti Kahungunu and a mission of “growing our assets and to maximise the economic and wider returns from them for the collective good of Ngāti Kahungunu.” **To achieve the vision and mission of KAHC we have established four key result areas:**

- Strong Governance and Organisational Robustness
- Fisheries sector
- Diversified asset portfolio
- Quality relationships.

Nature of Business

The business of the KAHC is to receive and manage the fisheries settlement assets and other commercial assets of NKII for maximum commercial benefit. Each year the KAHC agrees its Statement of Intent with the NKII Board, setting the strategic direction and expected returns for the coming year. I am confident that we are making good progress on our stated key result areas within our Statement of Intent. We are reviewing our existing policies and are investigating at least two new investment opportunities which will add to the diversification of our asset portfolio.

Although there are no changes to the makeup of our Directors we have included a photo and profile of our Directors so our Ngāti Kahungunu members can be made aware of the Directors and the important responsibility they have in achieving the vision of the KAHC. All of our Directors namely, Mike Paku (Deputy Chair of the KAHC), Taine Randell, Hayden Hape, Trevor Moeke, and Paora Ammunson have a strong Kahungunu whakapapa. Our Directors bring a wide range of skills and experience to the Company and I believe the synergy present at our decision making table, holds our company in a steady position.

Fisheries Assets

There are no changes to the key assets owned by KAHC, namely; fishing quota, shares in Aotearoa Fisheries Limited (AFL), shares in Napier Mussels Limited, shares in Fiordland Lobster Company Limited, Tautane Station and cash. The KAHC received the following settlement assets to manage on behalf of Ngāti Kahungunu in accordance with the Maori Fisheries Act 2004:

- August 2006: 162,942,485 quota shares valued at \$9,436,871
- August 2006: 7874 income shares in Aotearoa Fisheries Ltd, valued at \$19,874,733
- July 2010: 501,527,278 quota shares valued at \$16,933,500

¹ The shares in AFL and quota received under the Fisheries Settlement process have been included in the accounts at the value established by Te Ohu Kaimoana on transfer.

Kahungunu Asset Holding Company Ltd Chairman's Report

- September 2012: Aquaculture pre-commencement space settlement cash \$1,499,845
- Cash of \$2,030,106

We have received a total of 7,874 shares in Aotearoa Fisheries Ltd (AFL) as part of the fisheries settlement which is a 6.3% holding in AFL. Last financial year we reduced the value of our share holdings in AFL by \$5,701,535. We weren't required to revalue our shareholdings again this year although we may be required to undertake future re-valuations of our shareholdings.

Non Fisheries Assets

The KAHC will continue to diversify its asset portfolio in non-fisheries assets. We receive regular presentations from business people inviting the KAHC to invest in their business plans. It is important to note the Company takes a conservative approach to investment to deliberately reduce our exposure to risk. While we are open to non-fisheries investment opportunities it has to match with our current investment strategy. With the support of our shareholder, we are investigating an opportunity to invest in a significant commercial property and plan to make an announcement about this during the 2015-2016 financial year.

Our investment in Tautane Station in 2013 continues to pay major dividends to the KAHC. We were saddened by the news of the passing of Donovan Wearing the former Chief Executive of Taratahi. During the year the KAHC moved into a positive balance between our Tautane mortgage and cash funds held in the bank. We are on target to repay our mortgage on the Tautane Station. The Company plans to make an annual contribution to development at the station at a cost of \$50,000 per annum.

Financial Performance

The KAHC has recorded a before tax profit of \$4,906,408.

Gross Profit 2008-2015

30-Jun-08	\$2,458,049
30-Jun-09	\$2,028,815
30-Jun-10	\$2,733,836
30-Jun-11	\$3,409,582
30-Jun-12	\$3,872,548
30-Jun-13	\$5,372,656
30-Jun-14	(\$2,463,070)
30-Jun-15	\$4,906,408

Retained Earnings 2008-2015

30-Jun-08	\$1,402,100
30-Jun-09	\$2,030,915
30-Jun-10	\$3,364,748
30-Jun-11	\$4,983,779
30-Jun-12	\$7,216,327
30-Jun-13	\$10,948,984
30-Jun-14	\$6,845,914
30-Jun-15	\$9,712,322

Kahungunu Asset Holding Company Ltd Chairman's Report

Equity 2008-2015

30-Jun-08	\$33,742,051
30-Jun-09	\$34,370,866
30-Jun-10	\$52,222,903
30-Jun-11	\$53,992,484
30-Jun-12	\$57,724,877
30-Jun-13	\$61,457,534
30-Jun-14	\$57,124,464
30-Jun-15	\$61,567,929

During the year the KAHC paid an increased dividend to NKII of \$2,040,000 plus a payment of \$40,000 to the Taiwhenua Assistance Fund. Even with the increased dividend to NKII the KAHC has achieved a reported increase in equity of \$4,443,465 for the year ended 30 June 2015.

Financial performance by asset class

Shares in Aotearoa Fisheries Ltd

The company received a cash dividend from AFL of \$670,594 during the year.

The net book value (NBV) of the KAHC shareholding in AFL as disclosed in its Annual Report² as at 30 September 2014 was \$26,000,982 which is an improvement on their value as at the same time on 30 September 2013 of \$25,482,555.

Aotearoa Fisheries Shares NBV

30-Jun-08	19,359,459
30-Jun-09	20,043,676
30-Jun-10	22,547,575
30-Jun-11	24,342,565
30-Jun-12	24,969,398
30-Jun-13	25,456,767
30-Jun-14	19,777,784
30-Jun-15	\$26,000,982

Shares in Fiordland Lobster Company Ltd

The KAHC owns 131,590 shares in Fiordland Lobster Company Limited (FLC). This represents a 5.71% holding in FLC. These shares have been included in the KAHC accounts at cost. The net book value of the KAHC shareholding in FLC as disclosed in its annual report at 31 March 2015 was \$7,595,503 (31/3/14: \$5,934,847).

² For information on AFL visit their website <http://afl.maori.nz/>

Kahungunu Asset Holding Company Ltd Chairman's Report

Fiordland Lobster Dividend

30-Jun-08	\$45,000
30-Jun-09	\$91,431
30-Jun-10	\$120,590
30-Jun-11	\$144,749
30-Jun-12	\$159,224
30-Jun-13	\$159,224
30-June-14	\$263,180
30-Jun-15	\$197,385

Fiordland Lobster NBV shares

30-Jun-08	1,136,064
30-Jun-09	1,788,061
30-Jun-10	2,658,504
30-Jun-11	3,733,886
30-Jun-12	4,297,351
30-Jun-13	5,087,409
30-Jun-14	5,934,847
30-Jun-15	7,595,503

Quota - ACE sales

KAHC earnings from the lease of Annual Catch Entitlement (ACE).

ACE Sales

30-Jun-08	2,755,961
30-Jun-09	2,551,163
30-Jun-10	3,163,240
30-Jun-11	3,153,147
30-Jun-12	3,300,792
30-Jun-13	3,276,042
30-Jun-14	3,309,567
30-Jun-15	4,113,130

Shares in Napier Mussels Ltd

The KAHC holds ownership of 91% of Napier Mussels Ltd. This amount has been written off due to impairment in value. Shareholder funding of \$13,650 was made during the year (2014:Nil) The share advances are recorded at nil value as they do not currently have a realisable value.

Shares in Area 2 Finfish Management Company Limited

The KAHC holds 1 share in Area 2 Finfish Management Company Limited (Area2). This represents a 2.56% holding in that company. These shares have been included at cost. The net book value of the Company's share in Area2 as disclosed in its Annual report at 30 September 2014 was \$573 (31/3/2013: \$570).

Shares in Trident Systems General Partner Limited

The KAHC owns 3,705 shares in Trident Systems General Partner Limited (Trident). This represents a 1.18% holding in that company. These shares have been included at cost. The net book value of the

Kahungunu Asset Holding Company Ltd Chairman's Report

KAHC share as disclosed in its annual report at 30 September 2014 was nil (30/09/2013: \$10).

Shares in Salco Quota Co Limited Partnership

The KAHC acquired 100,000 units with Salco Quota Co Limited partnership during 2014. The units were purchased for \$100,000. These units have been included at cost.

Shares in KAHC Investments Limited

The KAHC owns 100 shares in KAHC Investments Limited. This company has not traded during the year.

Constitutional reporting

During the year to 30 June 2015 there have been no:

- Transactions with settlement quota that have resulted in a registered interest by way of caveat or mortgage being placed over the quota;
- Interest registered against the settlement quota shares;
- Sales or exchanges or acquisitions of AFL income shares.

Going Forward

KAHC is enthusiastic of the close working relationship with the NKII Board. Throughout the year I provide regular updates to the NKII Board about the activities of the KAHC and I welcome the advice and feedback provided by our shareholder.

Finally, I believe our result for the year is pleasing, and I offer the attached consolidated statement of the KAHC financial performance for your consideration.

Tihei Kahungunu!



Rangī Manual
Chairman

Kahungunu Asset Holding Company Ltd

Directors



Rangi Manuel
*Independent
Representative/
KAHC Chair*

- General Manager, Kahungunu Executive ki Te Wairoa Charitable Trust
- Secretary/Trustee, Wairoa Waikaremoana Māori Trust Board
- Training provider to Hawke's Bay Seafoods
- Chairman, Ohuia Incorporation (discussions on horticulture proposal involving Ohuia Station)
- Mandated Representative/Negotiator, Te Tira Whakaemi o Te Wairoa



Taine Randell
*Independent
Representative*

- Director/Owner, Kaitiaki Land & Services
- Trustee, Tipu Green Limited
- Trustee, U-Turn Trust
- Director, Te Aranga Limited
- Director of the Ahuriri Airport Hawke's Bay
- Director of Hawke's Bay Rugby Union



Paora Amunson
*Independent
Representative*

- Chairman, Wairarapa Bush RFU
- Chairman, Papawai Marae
- Director, Wairarapa Moana Incorporation
- Trustee, Kokomai Arts Festival Trust
- Independent Appointee, Wellington Regional Strategy Committee
- Director, Arotahi News Ltd
- Member & Negotiator, Ngāti Kahungunu ki Wairarapa Tāmaki nui-a-Rua Treaty Claimant Group
- Manager of Sport & Leisure Society, Greytown



Trevor Moeke
*Independent
Representative*

- Company Director, Ākonga Holdings Ltd, Contract Management Consultancy
- Co-Chair, WINHEC (World Indigenous Nations Higher Education Consortium, Hawaii USA)
- Ministerial Appointment, Education New Zealand Stakeholder Advisory Group
- Principal Advisor, Crown Māori Capability Office of Executive, The Treasury

Kahungunu Asset Holding Company Ltd Directors



Mike Paku
NKII Board Shareholder
Representative/
KAHC Deputy Chair

- Board Member, Ngāti Kahungunu Iwi Incorporated
- Trustee, Health Hawke's Bay
- Chair, Te Haaro Board, Te Taiwhenua o Heretaunga
- Trustee, Te Matau-a-Māui Voyaging Trust
- Board Member, Hawke's Bay Museums Trust
- Committee Member, NKII Finance & Audit Sub Committee



Hayden Hape
NKII Board Shareholder
Representative

- Board Member, Ngāti Kahungunu Iwi Incorporated
- Chair, Tāmaki-nui-a-Rua Taiwhenua
- Member & Negotiator, Ngāti Kahungunu ki Wairarapa Tāmaki-nui-a-Rua Treaty Claimant Group



Kai moana

Ngāti Kahungunu Iwi Incorporated Summary Financial Statements

FOR THE YEAR ENDED 30TH JUNE 2015

Summary Statement of Financial Performance

	Consolidated*		Parent*	
	2015 \$	2014 \$	2015 \$	2014 \$
INCOME				
Dividend	874,375	263,180	2,080,000	1,870,000
Other income	7,994,179	5,038,848	3,004,738	947,673
Total Operating Income	8,868,554	5,302,028	5,084,738	2,817,673
LESS EXPENDITURE				
Administration and Other Operating	1,207,836	1,213,231	749,447	678,433
Directorate Expenses	1,814,380	1,996,537	1,488,051	1,579,177
Governance	718,480	766,006	545,812	602,273
Investment Writedown	5,701,535	-	-	-
Total Expenses	3,740,696	9,677,309	2,783,310	2,859,883
Net Surplus (Deficit) for year	5,127,857	-4,375,281	2,301,428	-42,210

Summary Statement of Movements in Equity

Opening Equity as at 1 July	58,673,837	63,289,118	3,749,397	4,031,606
Net Surplus/Deficit for the year	5,127,857	-4,375,281	2,301,428	-42,210
Total recognised revenues & expenses	5,127,857	-4,375,281	2,301,428	-42,210
Contributions from/ Distributions to owners	-240,000	-240,000	-240,000	-240,000
Less: Taiwhenua/ Taura here distribution	-240,000	-240,000	-240,000	-240,000
Reversal of RIT Provision				
Cash Settlement as per Deed of Settlement ¹	2,929,033	-	2,929,033	-
Quota Shares CRA3 as per Deed of Settlement ¹	1,617,057	-	1,617,057	-
Transfer to Advocacy Costs Reserve ²	-400,000	-	-400,000	-
Advocacy Costs Reserve ²	400,000	-	400,000	-
Closing Equity as at 30 June	68,107,784	58,673,837	10,356,916	3,749,397

Summary Statement of Financial Position as at 30 June 2015

ASSETS				
Total Non-Current Assets	60,401,067	60,947,036	2,765,921	2,810,438
Total Current Assets	14,108,952	11,457,587	8,434,230	7,601,164
TOTAL ASSETS	74,510,019	72,404,624	11,200,151	10,411,601
LIABILITIES				
Total current liabilities	902,234	6,615,787	843,235	6,547,203
Total term liabilities	5,500,000	7,115,000	-	115,000
TOTAL LIABILITIES	6,402,234	13,730,787	843,235	6,662,203
Total Equity	68,107,784	58,673,837	10,356,916	3,749,397
TOTAL EQUITY AND LIABILITIES	74,510,019	72,404,624	11,200,151	10,411,600

The figures in the financial summary have not been subject to audit and should be read in conjunction with the audited financial statements.

* Consolidated means group (Ngāti Kahungunu Iwi Incorporated and Kahungunu Asset Holding Company).

* Parent means Ngāti Kahungunu Iwi Incorporated.

Ngāti Kahungunu Iwi Incorporated Summary Financial Statements

FOR THE YEAR ENDED 30TH JUNE 2015

Summary Statement to Accounting Policies

Reporting Entity

Ngāti Kahungunu Iwi Incorporated (the Society) is an Incorporated Society established under the Incorporated Societies Act 1908. Ngāti Kahungunu Iwi Incorporated has several subsidiary entities. The reporting entity comprises the society and consolidated group of the society and its subsidiaries (the group).

This Summary Financial Statement has been extracted from the audited consolidated Ngāti Kahungunu Iwi Incorporated Financial Statements dated 24th September 2015.

Basis of Preparation

The group qualifies for differential reporting as it is not publicly accountable, and not large in size. The group has taken advantage of all available differential reporting exemptions except for FRS 19 Accounting for GST. The summary of financial statements are presented in New Zealand dollars, which is the group's presentation currency. All amounts have been rounded to the nearest whole dollar.

This summary financial statement cannot be expected to provide as complete an understanding as provided by the full financial statements. An unmodified audit opinion was issued on the full group financial statement.

Each tribal member is entitled to obtain a copy of the full financial statement upon request. Requests should be made to the Ngāti Kahungunu Iwi Incorporated Director of Smart Services, Ruth Wong - Ngāti Kahungunu Iwi Incorporated, Taikura House, Level 1,304 Fitzroy Avenue, Hastings. 06 8762718 or toll free 0800 524 864.

The Ngāti Kahungunu Iwi Incorporated Board authorised the issue of the full financial statements on 24th September 2015.



Tautane Station – Sign goes up January 2014

Ngāti Kahungunu Iwi Incorporated Summary Financial Statements

NOTES TO THE SUMMARY FINANCIAL STATEMENTS

1. RONGOMAIWAHINE IWI TRUST:

The Deed of Settlement between Rongomaiwahine Iwi Trust and Ngāti Kahungunu Iwi Incorporated dated 21 July 2006 has been cancelled based on repudiation by Rongomaiwahine Iwi Trust. Ngāti Kahungunu Iwi Incorporated is no longer obliged to transfer the cash and quota as outlined in the Deed of Settlement to Rongomaiwahine Iwi Trust.

The provision that has been calculated to reflect the cash and quota due to Rongomaiwahine Iwi Trust in accordance with the Deed of Settlement has accordingly been reversed to the Statement of Financial Performance and the Statement of Movements in Equity.

Statement of Movements in Equity

A balance of \$4,546,090 will be recognised in the Statement of Movements in Equity and represents the following:

Cash Obligation as per the Deed of Settlement

Quota Shares CRA3 as per Deed of Settlement

Statement of Financial Performance

A balance of \$1,797,511 will be recognised in the Statement of Financial Performance and represents the following:

ACE Income since settlement

Interest earned

Administration Fees

2. ADVOCACY RESERVE:

The additional dividend of \$400,000 provided by Kahungunu Asset Holdings Company Limited has not been utilised in the current year. This amount has been put aside for advocacy costs. These costs will be recognised in the period incurred and will then be offset against the reserve.



Chairman - Ngahiwi Tomoana
24 September 2015



Board Representative - Nelson Rangi



Ngāti Kahungunu Iwi
INCORPORATED

Annual Plan 2015-2016

Board Priorities

Ngāti Kahungunu Iwi Incorporated recognises the need to review its objectives and align its strategies with the needs of whānau & hapū. The following points outline the high level goals for the Board for 2015-2016.

United Voice

Ngāti Kahungunu Iwi Incorporated will develop quality relationships with our whānau, hapū and marae, and organisations that will assist us to achieve our objectives.

Advocacy

Ngāti Kahungunu Iwi Incorporated will seek to influence decision making and policies developed by local, regional and central government.

Kahungunu Te Reo and Tikanga

Ngāti Kahungunu Iwi Incorporated aspires to have te reo Māori and the unique Ngāti Kahungunu dialectal variations along with tikanga practised in all places where Ngāti Kahungunu whānau gather.

Annual Plan

The Ngāti Kahungunu Iwi Incorporated annual plan outlined below describes the key objectives for the iwi between July 2015 and June 2016. These objectives are based on the following Ngāti Kahungunu Iwi Inc. strategies: He Mahere Rautaki Hai Haumanu I Te Reo O Ngāti Kahungunu / Kahungunu, kia eke - The Revitalization of Te Reo o Ngāti Kahungunu, Kahungunu Ki Uta, Kahungunu Ki Tai - Marine and Freshwater Fisheries Strategic Plan and Te Ara Toiora O Ngāti Kahungunu, the Kahungunu Wellbeing Strategy.

HE MAHERE RAUTAKI HAI HAUMANU I TE REO O NGĀTI KAHUNGUNU

STRATEGIC PLAN FOR THE REVITALIZATION OF TE REO O NGĀTI KAHUNGUNU

- Whakamana i te Pae o Huaki Pōuri – Support the revitalization of Ngāti Kahungunu Paepae
- Support projects that improve the quality of reo, and promote the use of unique dialectal variations unique to Ngāti Kahungunu.
- Research Projects to attain the dialectal variations.
- Manage the Ministry of Education contracts
- Support the Matatini Plus
- Provide cultural support to the Te Ara Toiora and Kahungunu ki Uta, Kahungunu ki Tai Units

NGĀTI KAHUNGUNU NATURAL RESOURCES & ENVIRONMENT

KAHUNGUNU KI UTA, KAHUNGUNU KI TAI – MARINE AND FRESHWATER STRATEGIC PLAN

- Advocate for Ngāti Kahungunu objectives and values to be incorporated into natural resources decision making and policy developed by local, regional and central government
- Undertake a review of the Kahungunu Ki Uta Kahungunu Ki Tai strategic plan
- Support hapū to develop and progress hapū management plans to enhance their role as Kaitiaki of the natural resources.
- Develop quality relationships with organisations to assist us to achieve our natural resources objectives and to help build the capacity and capabilities of our people.

TE ARA TOIORA O NGĀTI KAHUNGUNU KAHUNGUNU WELLBEING STRATEGY

Strong, Vibrant, Healthy Whānau & Hapū – TE HAU O TE MAURI, TE HAU O TE ŌRĀ

- To progress the aims of Te Ara Toiora o Ngāti Kahungunu (Health & Wellbeing Strategy for Ngāti Kahungunu) by facilitating, brokering and enabling:
 - Wellbeing initiatives and strategies to progress and enhance Whānau & Hapū wellbeing.
 - Opportunities for Whānau and Hapū to gather & share wellbeing mātauranga
 - Kahungunu Whānau Whānui Research and evaluation of Whānau Wellbeing
- Advance the health and wellbeing of the Ngāti Kahungunu Iwi rohe by providing strategic vision, advice and progress the:
 - Tupeka Kore - Kahungunu Tobacco Free Strategy
 - Whakarauora Rongoā – Kahungunu Rongoā Revitalisation
 - Whakamoe Patu - Kahungunu Violence Free Strategy
 - Best practice whānau, hapū, iwi engagement

NGĀ POU TAUNAKI - SMART SERVICES

- Increase the vibrancy and wellbeing of Kahungunu whānau through events
- Improve the registration database and increase communication opportunities
- Provide benefits to members including scholarships, sponsorships, pātaka, online event management support, communications and database templates, help support.
- Communicate with whānau to inform and keep abreast of iwi activities and opportunities
- Strengthen the organisations financial system and processes
- Strengthen the internal administrative systems and processes

NGĀ TŪHONOHONOTANGA - POLITICAL

- Strengthen our relationship with the hapū claimant groups within the Ngāti Kahungunu rohe
- Improve Kahungunu representation on local and regional councils
- Influence policy developed by government agencies, local and regional councils,
- Monitor the performance of these entities based on Kahungunu criteria.

TE WHAKATIPU ŌHANGA - ECONOMIC DEVELOPMENT

- Develop and progress the economic status of Kahungunu whānau, hapū, iwi
- Progress and implement the Ngāti Kahungunu Economic Development Strategy – Kahungunu, KIA EKE! Kahungunu PLUS!

Ngāti Kahungunu Iwi Incorporated Annual General Meeting

Splash Planet Complex in conjunction with the AGM Pā Sports Day

28 November 2015

11:00am

11:00am **Standard Business**

- Mihi whakataū
- Hīmene/Karakia
- Apologies
- Maumahara
- Minutes of AGM 2014
- Receive Annual Report 2014-2015
- Chairman's Report
- Audited Financial Statements 2014-2015
- Kahungunu Asset Holding Company Report
- Re-appoint Auditor
- NKII Board Election 2016

11:30am **Presentations**

- Innovation Hub update
- Freshwater Update
- Te Matatini 2017

11.45am **Himene/Karakia**







Ngāti Kahungunu Iwi
INCORPORATED

TAIKURA HOUSE 304 FITZROY AVENUE, PO BOX 2406, HASTINGS 4153, NEW ZEALAND
PHONE 06 876 2718 • FAX 06 876 4807 • TOLL FREE 0800 KA HUNGUNU (0800 524 864)
EMAIL: ruth@kahungunu.iwi.nz
WEB: www.kahungunu.iwi.nz



AGM 28 NOVEMBER
11AM SPLASH PLANET, HASTINGS