

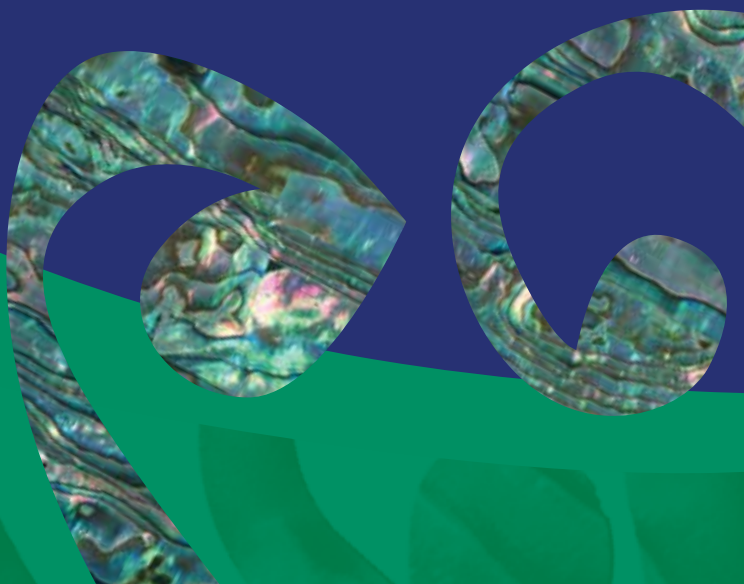
# Hoea rā



**Ngāti Kahungunu Iwi**  
INCORPORATED

## Annual Report 2016 - 2017

Published November 2017



# Table of Contents

	Page
Purpose, Vision & Mission	1
Chairperson's Report	2
General Manager's Statement	3
Our Year at a Glance 2016-2017	5
Board Members 2016-2019	7
Staff Members 2017-2018	9
Ngāti Kahungunu Iwi Incorporated Organisation Structure	10
Te Reo, Tikanga & Mātauranga	11
Environment & Natural Resources	13
Benefits to Members	16
Kahungunu Asset Holding Company Ltd Chairman's Report	25
Kahungunu Asset Holding Company Ltd Directors	30
Ngāti Kahungunu Iwi Incorporated Summary Financial Statements	32
Annual Plan 2017-2018	35
AGM Agenda	39



# Purpose, Vision & Mission

Ngāti Kahungunu Iwi Incorporated, with the mandate to represent the people of Ngāti Kahungunu, is the governing body for all aspects of Ngāti Kahungunu Iwi development.

The purpose of Ngāti Kahungunu Iwi Incorporated is to:

- Promote or assist the education of Ngāti Kahungunu Iwi;
- Promote the custody and preservation of the beliefs, customs and language of Ngāti Kahungunu Iwi;
- Promote the social and economic welfare advancement and vocational training of Ngāti Kahungunu Iwi;
- Promote personal, whānau and community health and wellbeing and raise the living standards of Ngāti Kahungunu Iwi;
- Promote high quality communications to and for the benefit of the members of Ngāti Kahungunu Iwi.

## *Strategic Objectives*

In September 2001 consultation with whānau throughout the rohe of Kahungunu occurred. Whānau shared their views, aspirations and desires which helped shape the development of a vision to guide Ngāti Kahungunu into the future. The vision, known as Kahungunu 2026, outlines the vision and mission statements and seven identified strategic objectives to focus on. The Ngāti Kahungunu Iwi Inc. planning framework continues to outline priorities, activities and desired outcomes that link directly to the seven strategic objectives within the Kahungunu 2026 vision.

The seven strategic objectives are:

- Ngāti Kahungunu - Culturally Strong;
- Ngāti Kahungunu - Healthy and Vibrant Whānau;
- Ngāti Kahungunu - Economically Strong;
- Ngāti Kahungunu - Informed and Participating Citizens in the World;
- Ngāti Kahungunu - Independent and Self Determined;
- Ngāti Kahungunu - Healthy, Thriving and Sustainable Environment
- Ngāti Kahungunu - Making our Mark

## *Vision Statement*

"Kahungunu - ki te whaiao, ki te ao mārama"

Achieving excellence in all areas of our lives

## *Mission Statement*

Kia maumahara ki te mana āhua ake o Ngāti Kahungunu

Uphold the absolute uniqueness of the living breath of Kahungunu

"To enhance the mana and well-being of Ngāti Kahungunu Iwi"

## *Reporting*

Ngāti Kahungunu Iwi Incorporated has an obligation to provide an 'Annual Report' for its membership to account for the previous financial year 1 July 2016 – 30 June 2017. This document provides a summary report against the objectives set out in the 2016-2017 Annual Plan. It includes steps taken to increase the registration database and gives an overview of the organisation's performance, including changes in the value of its assets, profit distribution and the summary financial statements.

# Chairperson's Report



## **Te Ara Paerangi**

We have entered a new phase of iwi development in which we are pushing our waka further and further out into new and exciting waters. This is as a result of settlement groups taking up activities once provided by us such as environmental, health, local government, reo and hapū advocacy which has allowed us to think beyond the horizon. For example, take Matatini, we were able to invest in it on behalf of all whānau and hapū.

The Matatini Chair, Selwyn Parata called this event the "Matatini of all Matatini," but I think this applies to all the Kahungunu festival events inclusive of the Taniwha Dragon which was a huge success. The growing partnership with Clubs Hastings is also proving fruitful. Of course the financial investment overall was huge but we have left an indelible mark on our own peoples hearts and minds which was our main goal.

## **Piki ake, kake ake**

Kahungunu Asset Holding Company (KAHC) then lifted the bar to win the Tararua Farm of the year and the Best Māori Business award from Auckland University. KAHC also joint ventured with Hawke's Bay Seafoods to purchase a deep sea fishing vessel to fulfil a 30 year dream to catch our own fish and reacquainted our relationship with Tangaroa.

## **Mauri tangata**

ICF is a national forum for Iwi Chairs to share information, influence legislation and provide a default voice for whānau, hapū and iwi. Ngāti Kahungunu Iwi Incorporated has taken a lead role in economic development sector and have evolved a strategy that leads out to 2019,20,21 supported by ICF.

## **Kōrero mai**

It has been a hard, long slog but the work of our te reo unit is coming into its own with other iwi leaning on it for guidance which moved one of our taumata members to say "Ngāti Kahungunu is leading the way." The Kura Reo, Whakamana i Te Pae o Huaki Pōuri and Te Reo ki Tua symposium were outstanding. It is also our honour to welcome language exponents Sir Timoti Kāretu and Liz Hunkin who join Dr. Rangimārie Pere, Sir Pita Sharples, Professor Piri Sciascia and Moana Jackson on Te Taumata o Ngāti Kahungunu.

## **Ahakoā niania, he pounamu**

We farewelled Dr. Adele Whyte as CEO as she embarks on her own consultancy business and welcome Chrissie Hape as the new General Manager. Adele has given us sterling service over the last 5 years and we wish her well for the future. Our Directors and staff keep overperforming for such a small unit, moving 10s of 1000s of people to iwi touch points in unrelenting fashion on their meagre resources to excite their lives and although tight and few in numbers they are explosive and continue to excel in new challenges. I am pleased to present this annual report to the AGM.

Tihei Kahungunu!

A handwritten signature in black ink, appearing to read 'Ngahiwi Tomoana'. The signature is fluid and cursive.

**Ngahiwi Tomoana**

Chairman

# General Manager's Statement

## **Nāku te rourou, nāu te rourou, ka ora ai te iwi**

*Tenei te mihi ki te whānau o Ngāti Kahungunu,*

As I reflect over the last 12 months I look back in awe, wonder and with pride. At the beginning of this year our Chair challenged all of us to make the “unachievable achievable” and to make the “impossible possible!”



This whakataukī epitomises how we set about as a tari and as a whānau to achieve the objectives asked of us. The tari has stepped up with every member of our staff contributing to the results we have achieved this year. By working with and alongside our partners, our Taiwhenua, marae, hapū and whānau, I believe we have met the challenge from our Chair.

Our Events Calendar continues to grow each year. 26,000 of our whānau attended our events this year from the AGM & Pā Wars, the Kahungunu Waitangi day celebrations and the Matariki events within each Taiwhenua rohe, the Whakamana Wānanga in Wairarapa, Kura Reo, the Fish Hook Summit in Ahuriri to name but a few. At each event we are looking at how we can increase our benefits to our members and capture the opportunity to keep our whānau informed about what is happening in our rohe. The Kahungunu Iwi Members ID Card was launched in 2016 with 2,500 already issued. We will be looking at how we can extend our benefits to members through the use of this card with our partners over the next 2 years. The cards are available to all registered members of Ngāti Kahungunu Iwi Inc. Please contact the tari if you would like one issued to you.

This year Te Kahu o Te Amorangi hosted (as Herewini Parata chair of Te Matatini described) the “Matatini of all Matatini’s”. This was a fabulous event attended by over 50,000 whānau, 30,000 of which were Kahungunu. It showcased 47 teams and 1,880 performers; contributed \$50m to our local economy and was watched around the world by over 1.1m viewers on line. Ngāti Kahungunu Iwi sold over 20,000 discounted tickets to ensure that as many whānau could experience Matatini live. This event would not have been a success without our local and central government partners, our business partners and the 149 support organisations and their staff. I particularly want to acknowledge the Māori Wardens and the 570 volunteers who gave their time freely over those 5 days to ensure that everyone could experience a once in a lifetime event. And of course I can’t acknowledge enough the project manager of all project managers, Traci Tuimaseve.....Ka mau te wehi!!!

Not content with holding the Matatini of all Matatini’s, Ngāti Kahungunu Iwi hosted the Kahungunu Festival comprising 17 Allied events beginning with Kahungunu’s Waitangi celebrations and ending in July with the closing of the Kahungunu Taikura Kurupounamu exhibition. There were many highlights for whānau throughout these events. The inaugural Taniwha Dragon Economic Summit was held the week before Matatini and brought together representatives from the Chinese and Māori business communities for the first time. The aim of the summit was the creation of permanent jobs for whānau and a target of \$100m investment in the Kahungunu rohe. This was surpassed on the first day with over \$142m pledged by the end of the summit. Next steps are to realise these investments and the creation of jobs with those partners.

The Ngāti Kahungunu Te Reo strategy “Kahungunu, Kia eke” continues to drive the revitalisation of te reo Māori within Ngāti Kahungunu. The strengthening of our language and growing cultural capacity in Ngāti Kahungunu is at the centre of our Kura reo, Whakamana i te pae o Huakipōuri and the recently held Te Reo ki Tua Ngāti Kahungunu Iwi Reo

# General Manager's Statement

Symposium which had over 650 registrations. I would like to recognise the work of Irihapeti Roberts from Wairarapa who was with us over a fixed term primarily to begin research into Kahungunu dialectal variations and Alex-Ann Edwards from Wairoa. Alex-Ann was with our tari for over 8 years and was key to the development and implementation of our strategy. Her achievements are too numerous to list but the whānau of Wairoa should be proud of her and her contribution to Kahungunu whānau whānui. The appointment of our Director Jeremy Tātere MacLeod to represent Te Tairāwhiti on the newly established Te Mātāwai will only strengthen the ability of Ngāti Kahungunu Iwi to achieve the goals of our strategy.

Ngāti Kahungunu Iwi Te Taiao me ōna Rawa Unit's unwavering advocacy to enhance and protect our natural resources, and influence those decision makers across sectors with interests and obligations over natural resource management in the rohe remains at the heart of what we do. Kahungunu ki Uta, Kahungunu ki Tai prioritises local management in accordance with tikanga and supports the mana of hapū. Our team continue to work alongside our hapū and Taiwhenua champions to be at the table with local and central government to advocate for and uphold the mana of our wai and whenua. Instrumental are the efforts of the Iwi representatives on the Tutaekuri, Ahuriri Estuary, Ngaruroro, Karamū [TANK], the Māori Advisory/Standing Committees and the Regional Planning Groups. In February this year Jonathan Dick Director Te Taiao me ōna Rawa took on the newly established role with the Kahungunu Assets Holding Company. I would like to thank Jonathan's tireless efforts over the last 2 ½ years and congratulate Ngaio Tiuka who has been appointed to the role of Director for the Taiao unit.

Te Ara Toiora Strategy continues to steer our efforts with our government, community and business partners. Work over the last year has been focused on improving the health and wellbeing of whānau, reducing reoffending, increasing successful reintegration in the community, and the repatriation of our mokopuna to whānau, marae, hapū. Key to this is the commitment and advocacy of our Iwi representatives at a local, regional and national level i.e. the Māori Relationship Board, Te Kupenga, Whāia te Ara, Police Māori Focus group, Corrections Māori Advisory, our community driven Te Tumu Whakahaere o Te Wero as well as the many unsung heroes within our communities.

Te Kāhui Ōhanga o Takitimu (TKO) remains steadfast in its commitment to lead and influence the actions of the Matariki Regional Economic Development Strategy. TKO goals are to increase economic participation and prosperity of our whanau. The actions led by TKO are focused on increasing employment and revenue generation for Māori, Improving whānau capability, supporting business development and growing wellbeing and resiliency.

Finally I would like to acknowledge Dr Adele Whyte who resigned as our Chief Executive to pursue her own whānau business goals and dreams in May of this year. Her tireless efforts and advocacy for Ngāti Kahungunu Iwi whānau whānui and in particular within the freshwater space at a national, regional and local level is her legacy.

**“Whāia te iti kahurangi ki te tūohu koe, me he maunga teitei”**



**Chrissie Hape**  
General Manager

# Our Year at A Glance 2016-2017

- 13,000 people attended eight iwi run Matariki events held in Jul 2016 & Jun 2017
- 4,500 iwi members attended the 11th AGM Pā Sports day held on Saturday 26 Nov 2016
- 9,000 people attended Kahungunu Waitangi Day where we initiated the super Mahons rides – 6 Feb 2017
- 45,000 people attended Te Matatini – one of biggest National events in Aotearoa, hosted in Hawke's Bay at Kahungunu Sports Park 22-26 Feb 2017,
- 20,000 Te Matatini tickets were sold at a discounted rate to iwi members to attend Te Matatini 2017
- 20,000 people attended 17 Kahungunu Festival Events held in conjunction with Te Matatini in Feb 2017
- 120 people attended the sold out 7th Kahungunu Fish Hook Summit held at the Napier Sailing Club in May 2017
- 60 taura in their 3rd to final year of degree or doing post graduate studies received a scholarship grant in June 2017
- 59 iwi members and groups received sponsorship funding.
- 39 teams competed at 2016 National Secondary School Kapa Haka event held in Hawke's Bay
- 2,500 iwi members have received the new iwi Benefits to Members ID Card initiated in Dec 2016 to enable iwi members entitlement to discounts and other benefits including scholarship, sponsorship and access to other support the organisation gives its members.
- 3,500 people attended the 11th AGM Pā Sports Day in November 2016 and were given Mussels, Māori Bread, Butter, free lunch and a pottle of Rush Munro's Ice Cream
- 1230 new members registered with the iwi
- 149 pānui were sent out through Panui ki te iwi to promote or share information about general hui, kaupapa and events supporting Kahungunu wellbeing.
- 90 marae were sent a 2016-2017 Matariki wall planner calendar in July 2016
- 30 Māori candidates stood in the local District Health Board or Councils in Kahungunu during the 2016 elections. Ngāti Kahungunu supported all candidates.
- Two new Kahungunu Asset Holding Company Limited Directors were appointed in October 2016
- Jeremy Tātere MacLeod, Ngāti Kahungunu Iwi Te Reo Director appointed to Te Mātāwai the new organisation established under Te Ture mō te Reo Māori 2016 to lead the revitalisation of te reo Māori on behalf of all iwi and Māori.
- 100 Kahungunu whānau attended Koroneihana celebrations to mark ten year reign of Kiingi Tūheitia – August 2016
- 130 whānau members attended the second Whakamana I Te Pae o Huaki-Pōuri Wānanga held in Wairarapa in July 2016
- 12 video series released to promote the branding of Kahungunu, kia eke! Ngāti Kahungunu Māori Language Strategy 2013-2027
- 160 iwi members attend Te Kura Reo o Ngāti Kahungunu held at Wairarapa in October 2016.

# Our Year at A Glance 2016-2017





# Board Members 2016-2019



Haami Hilton

## **Kaumātua Representative**

Ko Kahurānaki te maunga  
Ko Ngaruroro te awa  
Ko Poukawa te waiū  
Ko Kahurānaki te marae  
Ko Te Rangikoianake te hapū  
Ko Te Whatuiāpiti te tangata  
Ko Te Hāpuku te rangatira  
Ko Tākitimu te waka  
Ko Ngāti Kahungunu te iwi  
Ko Haami Te Kuru Hilton tōku ingoa

## **Te Whanganui-a-Orotū Taiwhenua Representative**

Ko Maungaharuru te maunga  
Ko Tūtira te waiū  
Ko Te Ngaru te awa  
Ko Tangitū te moana  
Ko Tāngoio te marae  
Ko Hori Reti tōku ingoa



Hori Reti



Michael Anthony Paku

## **Heretaunga Taiwhenua Representative**

Ko Kahurānaki te maunga  
Ko Ngaruroro te awa  
Ko Ruahāpia te marae  
Ko Ngāti Hawea te hapū  
Ko Tākitimu te waka  
Ko Ngāti Kahungunu te iwi  
Ko Mike Paku tōku ingoa

## **Te Wairoa Taiwhenua Representative**

Ko Moumoukai te maunga  
Ko Nuhaka te awa  
Ko Tamakahu, Ko Te Poho o te Rehu ngā marae  
Ko Rākaipaaka te hapū  
Ko Tākitimu te waka  
Ko Ngāti Kahungunu te iwi  
Ko Riwai Rill Meihana tōku ingoa



Rill Meihana



John Barry  
Heperi-Smith

## **Tamatea Taiwhenua Representative**

Ko Te Rangi-tapu-ā-whata te maunga  
Ko Whatumā te waiū  
Ko Takitimu te waka  
Ko Te Rongo-a-Tahu te marae  
Ko Ngāti Kahungunu te iwi  
Ko Ngāi Te Kikiri-o-te-Rangi, ko Ngāi Tahu  
Mākanui, ko Ngāi Toroiwaho ngā hapū  
Ko John Barry (JB) Heperi-Smith tōku ingoa

# Board Members 2016-2019



Hayden Hape

## **Kahungunu ki Tāmaki-nui-a-Rua Taiwhenua Representative**

Ko Kaitoki te marae  
Ko Ngāti Pakapaka te hapū  
Ko Tākitimu te waka  
Ko Ruahine te maunga  
Ko Manawatū te awa  
Ko Ngāti Kahungunu te iwi  
Ko Hayden Hape tōku ingoa

---



Marama Tuuta

## **Kahungunu ki Wairarapa Representative**

Ko Pāpāwai te marae  
Ko Ngāti Moe te hapū  
Ko Takitimu te waka  
Ko Ngāti Kahungunu te iwi  
Ko Marama Tuuta tōku ingoa

---



Owen Purcell

## **Taura here Representative**

Ko Kahurānaki, ko Te Mata o Rongokako ngā maunga  
Ko Ngaruroro te awa  
Ko Ruahāpia te marae  
Ko Ngāti Hori, ko Ngāti Hawea ngā hapū  
Ko Tākitimu te waka  
Ko Ngāti Kahungunu te iwi  
Nō Kirikiriroa ahau  
Ko Owen Purcell tōku ingoa

---



Noelene Smiler

## **Taura here Representative**

Ko Whakapunake tōku maunga tipua  
Ko Hangaroa, ko Kaitaraha, ko Ruakituri ōku awa  
Ko Te Reinga tōku marae  
Ko Tuarenga tōku wharenui  
Ko Hinekōrako tōku wharekai.  
Ko Ngāti Kōhatu, ko Ngāti Ruapani, ko Ngāti Hinehika ōku hapū  
Ko Ngāti Kahungunu tōku iwi  
Ko Tākitimu tōku waka  
Ko Noelene Mauritania Smiler tōku ingoa

# Staff Members 2017-2018

This management structure has been in place for seven years and has allowed the tari to implement the iwi strategies that align to the 25 year vision and objectives of the organisation. A number of staff resigned during this year to embrace other opportunities. The Health & Wellbeing unit was mostly managed by Chrissie Hape in her role as Iwi/CYF Partnership Advisor. Director of the Environment & Natural Resources Unit, Jonathan Dick was appointed as the new General Manager for the Kahungunu Asset Holding Company. Ngaio Tiuka resumed as the Acting Director for 4 months and has since been appointed Director of the Environment & Natural Resources Unit. Te Reo & Tikanga Research Analyst, Alex-Ann Edwards saw an opportunity she couldn't turn down and is now living the dream in Hawaii. Te reo advocate, Irihapeti Roberts was contracted to research Kahungunu dialectal variations, she completed her fixed term contract, and she continues to inspire whānau to learn te reo Māori. The Smart Services team also lost one of its best workers, Tainui born Naina Watene. Naina resigned to pursue further opportunities where she can use her Research skills. Chief Executive Dr. Adele Whyte also resigned in June 2017 to pursue her own business opportunities. We acknowledge all staff past and present, for a fabulous year.

In July 2017 the Board appointed Chrissie Hape as General Manager. Her role is to help see the office through a transitional stage of growth and empowerment to strengthen greater relationships with partners that will create best outcomes for our whanau, hapu, iwi. Chrissie has over 25 years of management experience both within central government and in community sectors. She is an agile experienced leader and has managed people, projects and services with an emphasis on building strong effective relationships for the best outcomes for our community. She has the ability to lead strong cohesive teams with diverse responsibilities and priorities that meet the needs of our people. Chrissie also has a strong financial background and has already made some good decisions to ensure the organisation moves forward in a stable financial position. Chrissie hails from Kahungunu ki Heretaunga through Kahurānaki and Hougarea Marae and has strong tikanga values and beliefs that governs her work ethic.



**Chrissie Hape**  
General Manager



**Ngaio Tiuka**  
Director of  
Environment and  
Natural Resources



**Jeremy Tātere  
MacLeod**  
Director of Te Reo,  
Tikanga and  
Mātauranga



**Ruth Wong**  
Director of Smart  
Services and  
Communications  
Advisor



**Kerrin Fair**  
Database  
Administrator



**Michelle Ferris**  
Senior  
Administrator  
& Receptionist



**Hine Hape**  
Finance Officer



**Kate Karaka**  
Executive  
Assistant



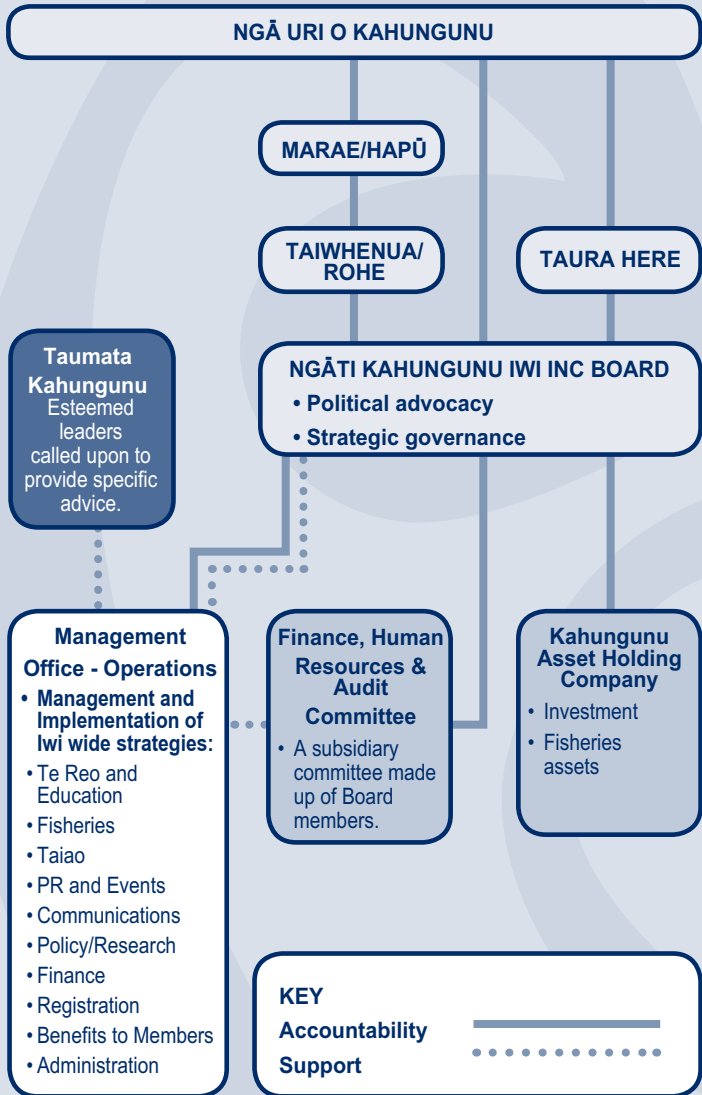
**Te Rangi Huata**  
Events &  
Promotions  
Manager



**Danielle Keil**  
Special Projects  
& Events Support

# Ngāti Kahungunu Iwi Incorporated Organisation Structure

Ngāti Kahungunu Iwi Incorporated is governed by ngā uri o Kahungunu through its constitutional organisational structure. This diagram depicts the structure of the iwi from marae/hapū to governance and through to management and workstream level.



# Te Reo, Tikanga & Mātauranga

Ngāti Kahungunu e noho mai rā i ō tātau tini marae kāinga, tēnā rā koutou. Ka hoki ngā mahara ki ngā mate nui o te tau i takoto ki runga i ō tātau marae maha. Nā reira, koinei te whakamaumahara ake ki ngā kuru pounamu o roto i ō tātau hapū maha kua tangingia i roto i te tau kua taha ake nei.

Ka mihi rā ki tō mātau hoamahi, ki a Alex-Ann Edwards, i wehe i a mātau i te timatanga o tēnei tau nei. Nō Alex-Ann te kaha ki te hāpai i ā tātau tini kaupapa i roto i tōna wā i konei, ā, kua puta a ia ki tāwāhi ki te kimi huarahi kē. Ahakoa, e kaha tautoko tonu mai nei ia i ngā kaupapa o te kāinga nā runga anō i tōna aroha ki tōna reo me tōna iwi. Tēnā koe Alex i ō mahi i roto i ēnei tau, mō Ngāti Kahungunu te painga, nō Ngāti Kahungunu te waimarie.

Ka mihi hoki ki te tuawhahine o Wairarapa, ki a Irihapeti Roberts, i kotahi tau tana roa ki tō tātau tari. I maringanui a Ngāti Kahungunu i ōna pukenga, i tōna koi, i tōna kaingākau ki te reo. Ka nui te mihi, Irihapeti. Nāu kua eke tō tātau reo!

E hia nei ngā whakatutukitanga i tēnei tau kua taha ake nei. Tuatahi rā ko te hui nui katoa a te ao Māori, ko Te Matatini – ka mutu te pai! I tū anō te wānanga whaikōrero, karanga ki te marae o Te Ara o Tāwhaki. I muia tērā e te hunga ngākaunui ki te whakapai ake i te kounga o ngā mahi i runga i ō tātau marae. Nō muri mai i tērā i kaha whakakanohingia tātau o Ngāti Kahungunu ki te Koroneihana Tuangahuru mā tahi o Kīngi Pōtatau Te Wherowhero Te Tuawhitu. I whakatūngia a Te Aro Moxon hai waha mō Ngāti Kahungunu, he whakaaro tērā e mihia nuitia nei e ngā iwi o te motu i te whakatūnga a Ngāti Kahungunu i te rangatahi, i te hunga mōhio ki te whakatakoto kōrero hai māngai mō te iwi. Ka mihi ki ngā kaumātua i tā rātau whakaae mai kia pēnei ngā whakaritenga.

I tū anō te hui, Te Reo ki Tua ki Heretaunga i te 24 me te 25 o ngā rā



# Te Reo, Tikanga & Mātauranga

o Hereturikōkā. Neke atu i te 700 ngā tāngata i tae ake ki tēnei hui rua rā te roa. Ko te kaupapa i tēnei tau ko te: Whakaaweawetia te hunga whakaaweawe!. Inā te nui o ngā hua o tēnei hui nui, me te whakamīharo mai o te motu ki tā Ngāti Kahungunu koke i ēnei tau nei. Kua hīkaka katoa te iwi i muri mai i tēnei hui ki te kōrero i tō tātau reo. He kaupapa tino pai rawa atu tēnei! Ka mihi ki te hunga i tae mai me ērā i mātakitaki mā te whakapāhotanga inamata.

I tū anō te pō tuku tohu reo Māori a Ngāti Kahungunu i te 25 o ngā rā o Hereturikōkā. 600 anō te hunga i tae ake, ā, 13 katoa i whakanuitia i roto i ngā whakahaere o te pō. He kaupapa ātaahua tēnei, ā, ko Ahorangi Pou Temara te kaikōrero o te pō, ko tāna kaupapa he mihi ki a Ngāti Kahungunu e ārahi nei i te motu nā tō tātau whakapono kai te rangatahi te reo e ora ana, ā, e whakatūngia nei rātau ki ngā hui nui hai māngai mō tātau. Ka mihi tonu mātau ki ngā kaitautoko nā rātau i tū ai tēnei kaupapa ātaahua – tēnā rā koutou.

Kua eke Te Kura Reo o Ngāti Kahungunu ki tōna tau tuarima. I tīmata te kura nei i te tau 2013, ā, kua hoki anō ki te papa i whānau ai te kaupapa, arā ki Te Ara o Tāwhaki, i Te Whare Takiura o Te Aho a Māui. Ka hoki ngā mahara ki ētahi kanohi kua ngaro mai i te whakaterenga o te waka nei, pēnei i a Materoa Haenga. Me mihi tonu ki ngā kaiako i roto i ēnei rima tau, ā, nā tēnei kaupapa e korikori nei a Ngāti Kahungunu, e piki haere nei te kounga o te reo Māori i roto i a tātau.

Ki tā mātau titiro, ko Ngāti Kahungunu kai mua rawa atu e haere ana i roto i te ao whakarauora reo. Kai te titirohia tātau e te motu, waihoki tā tātau whakapau kaha ki tō tātau reo. Kua aua atu tō tātau reo e raruru ana, ā, kua takoto te mānuka ki a Kahungunu – taki oho, koi ngaro tō reo!

E tino koa ana mātau i te urunga mai o Sir Tīmoti Kāretu rāua ko Liz Hunkin ki te Taumata o Ngāti Kahungunu. Koinei te whare pūkenga e arataki nei i te rautaki whakarauora reo a Ngāti Kahungunu, ā, e tino maringanui ana tātau i a rātau e noho nei ki tēnei rōpū. Tēnā rā koutou e ngā manu taupua o te iwi!

Ngāti Kahungunu, e kore e mutu tā mātau whakapātaritari i a tātau anō e pā ana ki te tāmatemate o te reo Māori. E ora ai tō tātau reo, me kōrero i roto i ō tātau kāinga. Kai te kāinga te oranga o tō tātau reo. Ko te tino whāinga o te rautaki, ko te tukuihotanga o te reo Māori hai reo kōrero i te matua ki te tamaiti, ka eke ana ki tērā, kātahi anō pea ka taea te kī kua ora anō tō tātau reo. Koinei te mihi ake nei ki a tātau tokoiti nei e whakapono nei ki tō tātau reo, e whakapau kaha nei, e pakanga nei kia ora tonu ai tō tātau reo hai ngā tau tini, tau mano.

Kahungunu, kia eke!

**Jeremy Tātere MacLeod**



# Environment & Natural Resources

The Taiao Unit has been kept busy over the last year. We've been to the Waitangi Tribunal, submitted on local and central government policy and worked alongside Taiwhenua/hapū organisations. There has been good progress made on most of our key goals:

- Advocate for Ngāti Kahungunu objectives and values to be incorporated into natural resources decision making and policy developed by local, regional and central government.
- Complete a review of the Kahungunu Ki Uta, Kahungunu Ki Tai Strategic Plan.
- Support hapū to develop and progress hapū management plans to enhance their role as Kaitiaki of the natural resources.
- Develop quality relationships with organisations to assist us to achieve our natural resource objectives which help to build the capacity and capabilities of our people.

Significant pressure on the environment has grown due in part to the government's 'business growth agenda' to double exports, which has influenced an increase in intensified land use, water bottling, mining and further degradation of water quality and mauri. Advocacy is a significant part of iwi business, influencing policy and strategy. We support objectives that reflect common tangata whenua values across Kahungunu, and their inclusion in legislation, national instruments, regional policy statements, management plans, Government and organisational work plans, strategic documents and formal relationships documents. We are continuing to develop policy that accurately reflects the Kahungunu Position in relation to resource management. This includes reviewing existing Ngāti Kahungunu Plans and Strategies for example of significance is the Kahungunu ki Uta, Kahungunu ki Tai, Marine and Freshwater Strategic Plan unfortunately due to increased workloads and a decrease in staff this work is still on-going.

Ngāti Kahungunu are party to the Freshwater Claim (WAI 2358), by the NZ Māori Council to the Waitangi Tribunal. The Iwi's submitted evidence and presented alongside Kahungunu whānau and hapū to the Waitangi Tribunal in Wellington. Ngāti Kahungunu also has its own freshwater claim to the Waitangi Tribunal. Te Taiao Unit also continues to provide policy support for the work of the General Manager and our iwi Chairman at the Iwi Chairs Forum including advice on national freshwater issues. There has also been an increase in representation from across our Taiwhenua.

On the 24th of November 2016 the board of Ngāti Kahungunu Iwi Incorporated board moved that: "Ngāti Kahungunu opposes all oil and gas prospecting, exploration and extraction of oil and gas from all of the coastal waters and land associated with the mana of Ngāti Kahungunu." This position has been shared with the Crown and Industry. Wairarapa, Ngāti Pāhauwera and Te Matau a Māui Voyaging Trust have similar positions. Ngāti Kahungunu also has a Petroleum claim with the Waitangi Tribunal.

The fourth GNS Earth Science wananga was held at Porangahau in October 2016. GNS are interested in progressing future opportunities and engagement with Ngāti Kahungunu, particularly young scientists. We continue to engage with a range of research institutes, sharing information and assessing the merits of potential research collaborations. Where relevant the Taiao Unit seek to support direct and meaningful relationships between researchers and Taiwhenua, hapū organisations.

# Environment & Natural Resources

Te Kotahitanga Tiaki Taiao represents a collaborative and cooperative group effort across the Kahungunu rohe to discuss Taiao issues in common for tangata whenua and share information. Approximately a dozen Ngāti Kahungunu individuals have successfully completed the Making Good Decisions course and become accredited Environmental Commissioners, almost tripling the local number. Credit to Ngāti Pāhauwera for making this initiative happen. We've engaged Department of Conservation in the development of the new Conservation Management Strategy for Hawke's Bay East Coast. Similarly we are participating in the new Hawke's Bay Marine and Coastal (stakeholder) Group facilitated by HBRC its current purpose is "To enhance the abundance and sustainability of fished species within Hawke's Bay" – through targeted research.

The Taiao Unit provides advice and support to Mana whenua representatives through the TANK (Tūtaekurī, Ahuriri, Ngaruroro, and Karamū) catchment plan collaborative process. We produced and presented alongside TANK mana whenua working group the "Ngaruroro values to attributes report". This is available on our website and we're open to further feedback to inform the resource management of these waterways. We're fortunate to be able to work with the Heretaunga Taiwhenua, marae and hapū representatives whom have dedicated significant time and insight.

We helped negotiate significant resourcing towards the development of a 'Mauri Monitoring Framework' led by Heretaunga Taiwhenua; a





# *Environment & Natural Resources*

long overdue agreement out of the Tukituki Board of Inquiry. We've also supported the protection of wetlands through policy that ensures significant taonga, like Poukawa Waiū, continues to provide for cultural values. We are a party to an Environment Court appeal on the definition of wetlands, alongside Poukawa hapū and whānau.

We've been successful with amendments to the Hastings District Plan improving protection for waahi taonga and the Heretaunga aquifer. Hastings District Council agreed to honour their 10 year old agreement to no longer use Brookvale bores (source of gastro outbreak) and discussions continue.

Key Focus for the Year to 30 June 2018 is the development of Kahungunu Ki Uta, Kahungunu Ki Tai policy, that draw on the common aspirations of Ngāti Kahungunu iwi and hapu, and that utilise the relevant plans and submissions available.

Finally, most significantly Jonathan Dick is now General Manager for the Kahungunu Asset Holding Company. JD's experience and networks while surely missed will no doubt still be available to help assist in progressing the goals of the unit.

## **Ngaio Tiuka**

Pouarataki – Director, Te Taiao me ōna Rawa



# Benefits to Members

Ngāti Kahungunu Iwi Incorporated is pleased to be able to provide opportunities to its members. Over the 2016-2017 year 1230 members registered with the iwi. The majority of these members come from Wairoa and Heretaunga followed by Wairarapa. Our graphs show the steady increase of new registrations that flowed in this time last year when the Iwi Member Card was launched and with the sales of the discounted Te Matatini tickets. On the 30 June 2017 we had 26,190 registered members. The following pages show the what, who, and how of our Benefits to Members.

This coming year we are going to be implementing the Iwi Member Card at up and coming events, starting with this year's AGM Pā Sports Day on 25 November 2017.

Whānau will need to have an Iwi Membership Card (IMC) to receive a Splash Planet Superpass at an iwi discounted rate of \$5.00. We will still register sporting teams, however the teams are no longer linked to receiving a \$5 wristband. Marae will still need to give permission for their teams to register. We are running an Iwi Membership Card (IMC) Drive. Iwi staff will be traveling to each Taiwhenua to register members and promote the IMC. The IMC Drive will take place between 1st -10th November. During this time whānau will be able to purchase their early bird **Kahungunu \$5 wristband**. Alternatively they can purchase a **Kahungunu \$10 wristband** on the day of the AGM (25 November 2017). \*Either way, every person needs their IMC to receive this offer. All Kahungunu whānau with their IMC will receive a free lunch and a whanau care package at closing time (one per whānau). There are 3 levels of registration to receive benefits.

*\*Refer to the IMC brochure or check out our website for more info [www.kahungunu.iwi.nz](http://www.kahungunu.iwi.nz)*

## COMMUNICATIONS

The organisation has a number of ways we share information with our people. Face to face is by far the best way to communicate but with the large number of registered members who live all around the world, we need to be extra smart in the way we communicate. The Panui ki te iwi – email network, the iwi website [www.kahungunu.iwi.nz](http://www.kahungunu.iwi.nz), texting, facebook and twitter are some of the obvious forms of communication, but we have to be smarter still, and some of our messages have reached people through music at events, karakia, videos, songs, dance offs, poetry and consistent messaging through our email signatures and media releases. Our goal for communications has always been about being up front and transparent and if we're not sure – ask questions.

## REGISTRATIONS

The iwi registration database is growing, but it's only as good as the information inside the database. Whānau move house quite frequently for different reasons and it makes it hard to keep in touch when they have incorrect addresses. As at 30 June 2017 there were 26,190 registered members on our database.



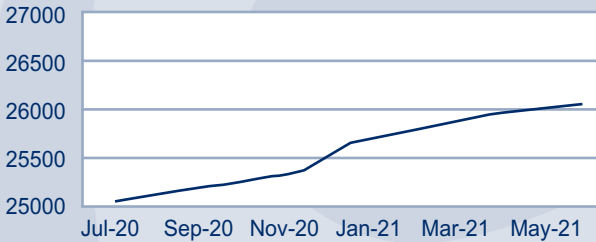
# Benefits to Members

## New Members Summary by Area Report:

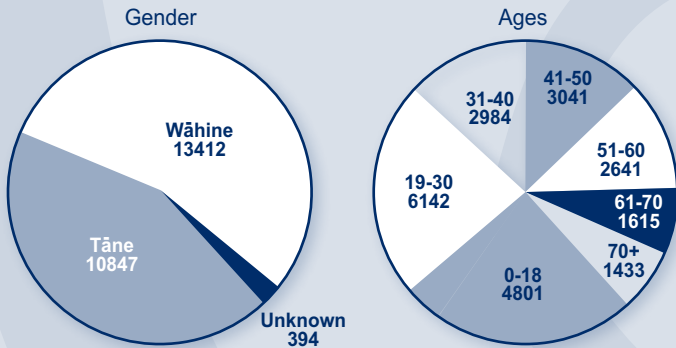
Members Entered between 01/07/2016 – 30/06/2017

No Taiwhenua/Taura Here	22
Heretaunga	382
Tāmaki-nui-a-Rua	52
Tamatea	79
Wairarapa	144
Wairoa	388
Te Whanganui-a-Orotū	88
Ngā Parirau o Te Ika	33
Te Raki/Tāmaki Makaurau	7
Te Upoko o Te Ika	14
Te Waipounamu	21
<b>Grand Total</b>	<b>1230</b>

## Iwi Members - Growth by month



## Kahungunu - Statistics of Registered Tangata Whenua Members



## EVENTS

Ngāti Kahungunu Iwi Incorporated strives to produce and sponsor events that strengthens our iwi and hapū ties with a whole of Ngāti Kahungunu approach.

### Waiata Māori Music Awards 9 September 2016, Hastings Sports Centre, Hastings

Māori musicians gathered to honour their peers led by Rob Ruha who took home three awards for Best Album, Best Songwriter and Best Song (Paremata mene). Nine awards were on offer at this national event to honour the achievements of outstanding traditional and contemporary music composition and performance. Ngāti Kahungunu Iwi is proud to sponsor this superb platform for national Māori music excellence.

# Benefits to Members

## ***Kahungunu AGM Pā Sports Day 26 November 2016, Splash Planet, Hastings***

A record crowd came out for our biggest sports day ever with 1,200 players from 20 marae competing in netball, 3 on 3 basketball, volleyball, kiwi sports, Ki Orahi and euchre. The AGM meeting streamed live finished in under an hour. The Kahungunu Asset Holding Company generously provided a bag of goodies of mussels, Rewana bread, butter and Rush Munros ice cream to one thousand delighted families from Heretaunga as well as Hamilton, Wellington, Masterton, Dannevirke and Wairoa.

## ***Iron Māori 3 December 2016, Ahuriri, Napier***

Thousands turned out to challenge themselves at the 9th annual IronMāori half Ironman. Competitors swam 2km, cycled the 90km course and finished the day with a 21km run back to the finish line. 600 youngsters in the Tamariki Rangatahi event the day before accepted the challenge too urged on by their families. Ngāti Kahungunu Iwi is the founding sponsor of this wonderful event organised by Heather & Wayne Skipworth, Missy & George Mackey, Lee Grace and his partner Kiri Bird.

## ***Kahungunu Festival 3 to 26 February 2017***

This festival brought together a kaleidoscope of culture and commerce from throughout the world in a dynamic summer celebration where the principal event Te Matatini, the biggest kapa haka show on earth was hosted by Ngāti Kahungunu for our visitors and 62,000 strong iwi membership. Kahungunu flags flew proudly on every main street to welcome visitors to Wairoa, Napier, Hastings, Waipawa, Waipukurau, Dannevirke and Masterton. We managed 17 allied events including;

- Waitangi Day Celebrations (9,000). A festival of food, sports and entertainment
- Kahungunu Taikura Kuru Pounamu Exhibition (5,000), Photographic display of significance
- Ahuriri Light Trail (2500), 120m long Māori deco wall of light reflecting in Ahuriri lagoon
- Te Herenga Waka Festival (5,000) The biggest gathering of waka hourua in Aotearoa
- Water Borne Show (1500) Performances and memorable lantern ceremony on the water
- Taniwha Dragon Summit (\$100+ million business deals), Summit for 250 business leaders
- Iwi Toi Kahungunu Exhibition (2500), Showcase by reknown Kahungunu artisans and friends
- Takitimu ki Rarotonga Pou Unveiling (500), Opening by Ariki of Takitimu ki Rarotonga, Pā Ariki
- Te Matatini Pōhiri (7,000), Kahungunu welcome for record 47 kapa haka teams
- The Whānau Show (500), Wonderful occasion hosted by the Frangee Pangee Committee
- Moments to Remember Ball (500), Kaumātua presented to Kingi Tūheitia
- Kahungunu Beach Party with Barry White Motown Revue (2,000) Dancing on the beach
- Takitimu VYBZ (1,000) Two nights of groovy beats by DJs and top NZ bands
- Kahungunu Pāvilion (15,000). Showcase Te Matatini trophies, theatre, fashion and dance

# Benefits to Members

- Pāua Club (300). An exclusive paid experience at Te Matatini of prime grandstand seating, VIP parking, private Club Lounge facilities, business centre services, indoor and outdoor viewing screens, mirimiri, four star dining with bottemless barista and health drinks.

## **Te Matatini Te Kahu o Te Amorangi 22-26 Feb 2017 Kahungunu HB Sports Park, Hastings**

Ngāti Kahungunu Iwi Inc partnered with Kahungunu Rūnanga Arts & Culture Board to host this once in a lifetime occasion. We contributed \$1.6 million to host Te Matatini 2017. This included \$350k fee rights to host the event in our region. Iwi chairman Ngahiwi Tomoana called our contribution “Kai Hau Kai – A feast for the eyes, ears and puku”. We employed project manager Traci Tuimaseve and acknowledge his outstanding contribution to the event’s success. Te Matatini CEO Carl Ross said, “This is the best Te Matatini I have attended”(HB Today).

- 50,000 attended the 4-day festival
- 15,000 watched the finals
- \$29.9 million spent in the region. Average daily spend per visitor was \$207
- 80% of Te Matatini visitors were from outside Hawke’s Bay
- 1.1 million on-line viewers over 4 days
- 145,000 views in Australia and USA
- 1,880 kapa haka performers in record 47 groups
- 570 volunteers
- 1 Winner Te Toa Whakaihūwaka (Overall Champion) Whāngārā Mai Tawhiti



## **Matariki June 2017, From Wairoa to Wairarapa. Attendance 13,000**

Thousands attended 17th annual Matariki celebrations to welcome the Māori new year with fun, feasting and festivity. A huge crowd led by Hayden Hape gathered in Dannevirke to enjoy a night of remembrance and spectacular fireworks. Zac Makoare and his team pulled together a great night at Te Aute College and Rani Maaka organised a wonderful country gathering in Takapau attracting a full house in the town hall. In Heretaunga new event organiser Alayna and Thompson Hokianga from Te Aka Trust worked their magic with a Matariki baby competition, Matariki star cookies and an excellant line-up of local performers attracting thousands. Napier was awash with people too and organiser Mary Martin from Te Whanganui-a-Orotū Taiwhenua ensured the night was fun and enjoyable for all. Wairoa too had a full week of activities with a huge turnout for the closing night. Big thanks to local organisers Sara Bird and Esta Wainohu for pulling in local politicians Meka Whaitiri and Marama Fox to tag team with Tauru Johnson as MCs for the night ending with a massive fireworks finale. Tirau Te Tau pulled together Matariki Waiwhetu on the Lake in Masterton, a moving lantern ceremony on the water to remember loved ones. We appreciate all Matariki funders Te Puni Kōkiri, Trust House, Waikaremoana Trust Board, New World Masterton, Sport Hawke’s Bay and Creative Communities.

## **Our Events Commitment**

By Kahungunu, For Kahungunu, For Everyone, Forever !

# Benefits to Members

## GENERAL SPONSORSHIPS

Ngāti Kahungunu Iwi Incorporated receives a number of sponsorship applications throughout the year. The purpose of sponsorship is to encourage and to recognise the pursuit of cultural and sporting excellence by Ngāti Kahungunu. The following recipients received funding in the 2016/2017 financial year.

Recipient Name	Event of Activity	Value
Jordan Pearse	2016 New Zealand Senior Women Canoe Polo World Champs	\$500.00
Corban Paewai	New Zealand Basketball Academy	\$300.00
Rahiri Edwards Hammond	Silicon Valley Leadership Training	\$1,000.00
Tahi Manahi	Silicon Valley Leadership Training	\$1,000.00
Pahemata Robinson	Silicon Valley Leadership Training	\$1,000.00
Te Mahia School	Wairoa and Districts Kapahaka Competition	\$1,000.00
Matthew Hiha	U17 Boys' National Tournament	\$250.00
Taimania Pupuke	2016 World Hip Hop Dance Festival	\$500.00
Mya Rasmussen	2016 Pan Pacific Swimming Championships	\$500.00
Jayden Walker	National U15 Rugby Tournament	\$250.00
Paora Winitana Jnr	U15 Boys National Basketball Tournament	\$250.00
Kahurangi Devonshire	U15 Bigfoot Basketball Tournament	\$300.00
Madison Gaiger	NZ U21 Canoe Polo World Champs	\$500.00
Hagar Keepa	U15 Australia Touch Development Tour	\$500.00
Raleigh Knapp	HBU15 National Hockey Tournament	\$250.00
Jordan Toafia	NZ U15 Australia Softball Tour	\$500.00
Hannah Cotter	HB U13 National Hockey Tournament	\$250.00
Kaitlin Cotter	HB U15 National Hockey Tournament	\$250.00
Paula Hokianga	National Squash Superchamps - F grade	\$250.00
Marise Johnson	National Squash Superchamps - F grade	\$250.00
Whitney Nohokau	National Squash Superchamps - F grade	\$250.00
Kopiri Downs	National Takitimu Hockey Māori Tournament	\$250.00
Amiri Downs Williams	National Takitimu Hockey Māori Tournament	\$250.00
Tairea Thompson	Arizona Senior Basketball Classic	\$500.00
Bridge Pā Sports Club	NZ Senior Māori Mens Rugby League Tournament	\$900.00
Bridge Pā Ki Kahungunu Wahine Rugby League	NZ Māori Wahine Rugby League Tournament	\$900.00
Nga Manukura o te Tairāwhiti Trust	Aotearoa Morehu Multicultural Day	\$1,000.00
Peterhead Primary	2016 Primary School Kapahaka Festival	\$1,000.00
Patu Aotearoa	National 2016 Patu Pa Wars	\$500.00
Nga Manukura O Te Tairāwhiti Trust	Kaumātua/Pakeke Morehu Ball for Aotearoa Morehu Celebrations	\$300.00
Peri Belmont	Silicon Valley Leadership Training	\$750.00
Harono Hokianga	Silicon Valley Leadership Training	\$750.00

# Benefits to Members

Recipient Name	Event of Activity	Value
Ngāti Kahungunu ki Wairarapa Charitable Trust	Kahungunu ki Wairarapa Curriculum Book Launch	\$500.00
Anthony Hodgson	2016 National Māori Hockey Tournament	\$250.00
Heretaunga U17 Girls Basketball	2016 National Māori Basketball Tournament	\$500.00
Heretaunga U9 Boys Basketball	2016 National Māori Basketball Tournament	\$500.00
Heretaunga Social Mixed Basketball	2016 National Māori Basketball Tournament	\$500.00
Heretaunga Open Mens Basketball	2016 National Māori Basketball Tournament	\$500.00
Dion Crouch	2016 NRA World Action Pistol Tournament	\$500.00
Heretaunga U11 Girls Basketball	2016 National Māori Basketball Tournament	\$500.00
Heretaunga U9 Girls Basketball	2016 National Māori Basketball Tournament	\$500.00
Heretaunga U13 Girls Basketball	2016 National Māori Basketball Tournament	\$500.00
Heretaunga U15 Boys Basketball	2016 National Māori Basketball Tournament	\$500.00
Heretaunga U15 Girls Basketball	2016 National Māori Basketball Tournament	\$500.00
Heretaunga U11 Boys Basketball	2016 National Māori Basketball Tournament	\$500.00
Heretaunga U13 Boys Basketball	2016 National Māori Basketball Tournament	\$500.00
JMP Consulting Ltd - Jody Hamilton	International Indigenous Employment Symposium	\$1,000.00
Heretaunga U17 Boys Basketball	2016 National Māori Basketball Tournament	\$500.00
Te Taitimu trust	2017 Te Aute Summer Camp	\$2,500.00
Rachael Downs	2016 World Masters Games - Hockey	\$500.00
Papawai Marae	Kaumātua Event - Papawai Marae	\$1,000.00
Bryan Nuku	2017 Great Wall of China Marathon	\$250.00
Alexia Blom	WINA Junior Indoor Netball World Series	\$500.00
Grace Morrell	2017 Great Wall of China Marathon	\$250.00
Ashton Robinson	NZ Touch Trans Tasman Test	\$500.00
Stephen Atkinson	2017 NZ Affiliates Hockey Tournament	\$250.00
NZ Māori battalion association heretaunga branch	28th NZ Māori Battalion Association Celebration	\$1,000.00
Peter Cowan	IVF Va'a World Distance Waka Ama Sprints	\$500.00

# Benefits to Members

## SCHOLARSHIP REPORT

Ngāti Kahungunu Iwi Incorporated acknowledges that education is the key to personal, whānau, hapū and iwi development. The board allocated \$40,000 to support Ngāti Kahungunu tertiary students studying in 2017.

The fund is split into three areas as follows:

- **General Scholarships** are funded from a pool of \$15,000. The minimum amount awarded is \$500 to up to a maximum of 30 scholarship applicants who meet the criteria.
- Three **Research Scholarships** (\$5,000) are awarded to full-time Ngāti Kahungunu tertiary post-graduate students undertaking research.
- An **Internship Scholarship** fund of \$10,000 is provided for interns with relevant skills who participate in research work that contributes to iwi development.

This year the 2017 Scholarships opened on the 6th February and closed on 11th May allowing students 3 months to apply. A total of 66 Scholarship applications were received. Most of these applications were submitted online. Of the scholarships received 56 applications were general and 10 were research. All research applications met the criteria. A filter took place as per the policy and three research applicants were chosen by the Senior Management Team to receive \$5,000 each. In 2015 we entered into a partnership with Victoria University where they matched dollar for dollar up to \$10,000 for any eligible Victoria students. Last year (2016) we were able to successfully award all eligible taura. This year we did the same and we awarded seven (7) Victoria students with a general scholarship and three (3) research students with a research scholarship. With the funds approved from Victoria University we were able to fund all ten (10) applicants. Seven (7) students received \$500 each, One (1) research student received \$5,000 and (two) 2 research students received \$1,500 each. In total, NKII supported 60 students. The relationship with Victoria University has enabled us to do this.

Surname	First name	Taiwhenua	Tertiary institution	Qualification sought
Smiler	Jared	Heretaunga	Otago	Bachelor of Medicine and Surgery
Johnstone	Nellie-Ann	Wairoa	Te Wānanga o Aotearoa	Te Reo and Tikanga Māori
Week	Maia	Tamatea	Massey University	Diploma in Museum Studies
Maehe	Hawea	Wairoa	Te Wānanga o Aotearoa	Masters in Applied Indigenous Knowledge
Ellis	Julie	Wairoa	South Pacific College of Natural Medicine	Bachelor of Natural Medicine
Mihi	Sorenson	Wairoa	University of Canterbury	Bachelor of Laws
Ngawaka	Candis	Heretaunga	Waikato Institute of Technology	Bachelor of Teaching
Reynolds	Sharon	Wairoa	Health & Harmony Colleges	Art Therapist Diploma
McKenna	Ruth	Heretaunga	University of Auckland	Diploma of Teaching
Rohe	Tonisha	Wairoa	University of Auckland	BA Social Science
Fox	Whatahoro	Wairarapa	Te Wānanga o Aotearoa	Masters of Applied Indigenous Knowledge



# Benefits to Members

Surname	First name	Taiwhenua	Tertiary institution	Qualification sought
Eaves	Renee	Te Wai Pounamu	Ara Institute of Canterbury	Nursing Degree
Tipuna	Poihakena	Wairoa	University of Auckland	Doctorate of Education (EdD)
Te Whaiti-Smith	Jordan	Wairarapa	University of Otago,	Bachelor of Medicine & Surgery
Rawiri	Anthony	Heretaunga	University of Waikato	Bachelor of Arts
Huata	Rahina	Heretaunga	Te Whare Wananga o Awanuiarangi	Doctor of Philosophy
Savae	Atareta	Heretaunga	Te Wānanga o Raukawa	Bachelor of Teaching
Johnson	Natarsha	Heretaunga	Massey University	Bachelor of Arts
Preston	Te Hiwi	Wairoa	University of Canterbury	Masters Māori and Indigenous Leadership
Browne	Pania	Wairoa	University of Otago	Bachelor of Pharmacy
Solomon	Joshua	Wairoa	University of Otago	Bachelor of Bio Medical Science
Reti	Amy	Te Whanganui-a-Orotū	Te Rito Maioha	Bachelor of Teaching
Hura	Angelia	Heretaunga	Massey University	Masters on Science Genetics
Jones	Mary	Heretaunga	University of Waikato	Master of Māori & Pacific Development
McLaren	Tamzin	Te Wai Pounamu	Ara Institute of Canterbury	Ara Polytechnic Institute of Canterbury
Vercoe	Hinematawaia	Heretaunga	Te Wānanga o Raukawa	Bachelor of Teaching
Rimene	Genevieve	Wairarapa	Te Whare Wānanga o Waikato	Bachelor of Teaching
Black	Michael	Heretaunga	Lincoln University	Bachelor of Agriculture
Hepri	Joanne	Tamatea	Te Wānanga o Raukawa	Bachelor in Environmental Management
Bayley	Michael	Wairoa	Victoria University	Bachelor of Biomedical Science
Taurima	Sarita	Wairoa	Massey University	Masters Management
Fruean	Ellery	Wairoa	University of Otago	Bachelor of Pharmacy
Wong	Hemi	Heretaunga	University of Otago	Bachelor of Science-Neuroscience
Solomon	Rikki	Wairoa	Te Wānanga o Aotearoa	Doctorate in Indigenous Development and Advancement
Hokianga	Thompson	Tamatea	Te Wānanga o Aotearoa	Bachelor of Mātauranga Māori
Green	Monica	Ngā Parirau o Te Ika	Victoria University	Bachelor of commerce
Barker	Michael	Wairoa	Victoria University	Bachelor of Education
Berryman	Kim	Heretaunga	University of Waikato	Bachelor of Applied Social Science

# Benefits to Members

Surname	First name	Taiwhenua	Tertiary institution	Qualification sought
Rolleston	Jaylee	Heretaunga	Victoria University	Bachelor of Arts Majoring in Psychology and Criminology
Martin	Hyrum	Heretaunga	University of Otago	Bachelor of Dental Surgery
Hape	Hilary	Heretaunga	EIT	Bachelor of Nursing
Fake	Daniel	Te Whanganui- a-Orotū	AUT	Bachelor of Physio
Wild	Keana	Wairoa	Victoria University	Bachelor of Laws / Bachelor of Arts Majoring in Te Reo
Lepaio	Leanda	Heretaunga	Otago	Bachelor of Medicine and Bachelor of Surgery
Woodward	Georgia	Wairarapa	University of Waikato	Bachelor of Laws / Bachelor of Arts Majoring in Te Reo
Jakicevich	Kahu	Wairoa	Massey University	Bachelor of design with honours
Brown	Tayla	Wairoa	Victoria University	Post Graduate - Nursing
Ropiha	Rocky	Heretaunga	EIT	Bachelor of Arts -Māori
Paringatai	Te Rina	Heretaunga	EIT	Bachelor of Arts -Māori
Joseph	Jivame	Wairoa	University of Otago	Bachelor of Dental Surgery
Parata- Taiapa	Rongomai	Te Wai Pounamu	Massey University	Post Graduate - Māori Visual Arts
Hurst	Makere	Wairoa	Victoria University	Bachelor of Commerce & Bachelor of Arts
Tumarae	Mere-Heni	Heretaunga	University of Canterbury	Masters in Health Science
Pakai	Elizabeth	Heretaunga	University of Otago	PHD Philosophy
Selwyn	Kara	Tamaki Makaurau	University of Auckland	Masters of Education
Renata- Whaanga	Rapaera	Wairoa	Victoria University	Applied Linguistics
Fox	Ririwai	Wairarapa	Victoria University	BSC Honors in Psychology
Joseph	Reece	Wairoa	University of Auckland	Bachelor of Medical Science (Honours)
Karaitiana	Lewis	Wairarapa	University of Waikato	Masters of Education
Halford	Sky	Wairarapa	Victoria University	Masters of Environmental Studies / Science

# Kahungunu Asset Holding Company Ltd Chairman's Report



**Kahungunu, He tangata ahuwhenua, mōhio ki te whakahaere i ngā mahi o uta me ō tai.**

## **Tihei Kahungunu!**

It is my pleasure to provide the report of the Kahungunu Asset Holding Company Limited (the Company) for the year ended 30 June 2017.

## **Background**

The Company was established in 2005 by Ngāti Kahungunu Iwi Incorporated (NKII) to receive and manage the Treaty of Waitangi fisheries settlement on behalf of Ngāti Kahungunu.

The Company vision is to “Empower Ngāti Kahungunu Iwi Incorporated through sustainable economic and commercial success” and a mission to “grow and maximise the assets of Ngāti Kahungunu Iwi Incorporated so the full potential and aspirations of our iwi will be met.” To achieve the vision and mission of the Company, the following objectives have been set:

- **Kia Mataara:** To ensure the assets of the Company are invested prudently and within the Company’s purpose and rules.
- **Whakapakaritanga:** To improve the value of the Company’s capital base.
- **Whakamana:** Generate sufficient income to support the needs and aspirations of Ngāti Kahungunu Iwi Incorporated.

## **Nature of Business**

The business of the Company is to receive and manage the fisheries settlement assets and other commercial assets of NKII for maximum commercial benefit. Each year the Company agrees its Statement of Intent with the NKII Board to set the strategic direction for the coming year. In February 2017 the Company was proud to underwrite the Kahungunu Festival which included the hosting of the national kapa haka festival, Te Matatini.

In February 2017 NKII endorsed the appointment of Executive Directorship roles for the Company. Rangi Manuel was appointed as the Executive Chair of the Company, Trevor Moeke was appointed as the Executive Chair of the Fisheries Committee Te Hao Ika, and Hayden Hape was appointed as the Executive Director Tautane. At the same time Jonathan Dick was appointed as the General Manager of the Company. In July of this year Paora Ammunson resigned as a Director of the Company.

## **Fisheries Assets**

During the year the Company and HBS Tuna Limited established Pania Reef Fisheries Limited Partnership. This partnership enabled the purchase of a 34 metre deep water trawler called the Glomfjord. The Glomfjord arrived in Nelson from Denmark in March 2017 where it underwent refurbishment. It began fishing in July 2017. This asset is a welcome addition to our other key assets of fishing quota, the lobster processing facility in Auckland, shares in Aotearoa Fisheries Limited (AFL), Napier Mussels Limited, Fiordland Lobster Company Limited, and cash. The Company received the following settlement assets to manage on behalf of Ngāti Kahungunu in accordance with the Māori Fisheries Act 2004:

- August 2006: 162,942,485 quota shares valued at \$9,436,87<sup>1</sup>

<sup>1</sup> The shares in AFL and quota received under the Fisheries Settlement process have been included in the accounts at the value established by Te Ohu Kaimoana on transfer.

# Kahungunu Asset Holding Company Ltd Chairman's Report

- August 2006: 7874 income shares in Aotearoa Fisheries Ltd, valued at \$19,874,733
- July 2010: 501,527,278 quota shares valued at \$16,933,500
- September 2012: Aquaculture pre-commencement space settlement cash \$1,499,845
- Cash of \$2,030,106.

We have received a total of 15,748 shares (7,874 Voting, 7,874 Non-voting) in Aotearoa Fisheries Ltd (AFL) as part of the fisheries settlement which is a 6.3% holding in AFL. There will be no impairment of our shareholdings in AFL for this current year, although we may be required to undertake future re-valuations of our AFL shareholdings in the future.

With the support of our shareholder, we will continue to add value to our current fisheries assets. We have designed a programme to investigate opportunities for further investment in the fisheries industry.

## Non Fisheries Assets

The Company will also continue to seek opportunities to diversify our asset portfolio in non-fisheries assets. The Company takes a conservative approach to investment to deliberately reduce our exposure to undue risk. We are open to non-fisheries investment opportunities but it has to match our current investment strategy and risk profile.

The investment in Tautane Station in 2013 has been an important strategic acquisition for the Company. While the Company's overall mortgage has increased following the purchase of the rock lobster facility in Auckland, we remain on target to repay our mortgage on the Tautane Station by 2018.

## Financial Performance

The Company has recorded a before tax profit of \$3,800,206.

### Gross Profit 2009-2017

30-Jun-09	\$2,028,815
30-Jun-10	\$2,733,836
30-Jun-11	\$3,409,582
30-Jun-12	\$3,872,548
30-Jun-13	\$5,372,656
30-Jun-14	(\$2,463,070)
30-Jun-15	\$4,906,408
30-Jun-16	\$4,269,724
<b>30-Jun-17</b>	<b>\$3,800,206</b>

### Retained Earnings 2009-2017

30-Jun-09	\$2,030,915
30-Jun-10	\$3,364,748
30-Jun-11	\$4,983,779
30-Jun-12	\$7,216,327
30-Jun-13	\$10,948,984
30-Jun-14	\$6,845,914
30-Jun-15	\$9,712,322
30-Jun-16	\$12,342,046
<b>30-Jun-17</b>	<b>\$11,528,362</b>

# Kahungunu Asset Holding Company Ltd

## Chairman's Report

### Equity 2009-2017

30-Jun-09	\$34,370,866
30-Jun-10	\$52,222,903
30-Jun-11	\$53,992,484
30-Jun-12	\$57,724,877
30-Jun-13	\$61,457,534
30-Jun-14	\$57,124,464
30-Jun-15	\$61,567,929
30-Jun-16	\$69,540,526
<b>30-Jun-17</b>	<b>\$68,726,842</b>

During the year the Company paid a dividend to NKII of \$4,613,890 (2016: \$1,680,000) which includes the payment of \$40,000 to the Taiwhenua Assistance Fund. The Company has reported a decrease in equity of \$813,684 for the year ended 30 June 2017.

### Financial performance by asset class

#### Shares in Aotearoa Fisheries Ltd

The Company received a cash dividend from AFL of \$628,931 during the year (2016: \$487,530).

The net book value (NBV) of the Company shareholding in AFL as disclosed in its Annual Report on 30 September 2016 was \$26,553,710.

#### Aotearoa Fisheries Shares NBV

30-Jun-09	\$20,043,676
30-Jun-10	\$22,547,575
30-Jun-11	\$24,342,565
30-Jun-12	\$24,969,398
30-Jun-13	\$25,456,767
30-Jun-14	\$19,777,784
30-Jun-15	\$26,000,982
30-Jun-16	\$25,736,263
<b>30-Jun-17</b>	<b>\$26,553,710</b>

#### Shares in Fiordland Lobster Company Ltd

The Company purchased an additional 5080 shares in 2017 and now owns 136,670 shares in Fiordland Lobster Company Limited (FLC). This represents a 5.87% holding in FLC. These shares have been included in the Company accounts at cost. The net book value of the Company shareholding in FLC as disclosed in its annual report at 31 March 2017 was \$10,403,222 (31/3/16: \$9,785,972).

# Kahungunu Asset Holding Company Ltd Chairman's Report

## Fiordland Lobster Dividend

30-Jun-09	\$91,431
30-Jun-10	\$120,590
30-Jun-11	\$144,749
30-Jun-12	\$159,224
30-Jun-13	\$159,224
30-June-14	\$263,180
30-Jun-15	\$197,385
30-Jun-16	\$263,180
<b>30-Jun-17</b>	<b>\$283,500</b>

## Fiordland Lobster NBV shares

30-Jun-09	1,788,061
30-Jun-10	2,658,504
30-Jun-11	3,733,886
30-Jun-12	4,297,351
30-Jun-13	5,087,409
30-Jun-14	5,934,847
30-Jun-15	7,595,503
30-Jun-16	9,785,972
<b>30-Jun-17</b>	<b>10,403,222</b>

## Quota - ACE sales

Company earnings from the lease of Annual Catch Entitlement (ACE).

## ACE Sales

30-Jun-09	2,551,163
30-Jun-10	3,163,240
30-Jun-11	3,153,147
30-Jun-12	3,300,792
30-Jun-13	3,276,042
30-Jun-14	3,309,567
30-Jun-15	4,113,130
30-Jun-16	3,568,914
<b>30-Jun-17</b>	<b>2,983,198</b>

## Shares in Napier Mussels Ltd

The Company holds ownership of 91% of Napier Mussels Ltd. This amount has been written off due to impairment in value. Shareholder funding of \$9,100 was made during the year (2016: \$13,650). The share advances are recorded at nil value as they do not currently have a realisable value.

## Shares in Area 2 Finfish Management Company Limited

The Company holds 1 share in Area 2 Finfish Management Company Limited (Area2). This represents a 2.56% holding in that company. These shares have been included at cost. The net book value of the Company share in Area2 as disclosed in its annual report at 30 September 2016 was \$574 (31/3/2015: \$573).

# Kahungunu Asset Holding Company Ltd Chairman's Report

## Shares in Trident Systems General Partner Limited

The Company owns 3,705 shares in Trident Systems General Partner Limited (Trident). This represents a 1.18% holding in that company. These shares have been included at cost. The net book value of the Company's share as disclosed in its annual report at 30 September 2016 was nil (30/09/2015: Nil).

## Shares in Salco Quota Co Limited Partnership

The Company acquired 100,000 units with Salco Quota Co Limited partnership in 2014 for the purchase price of \$100,000. An additional 135,135 units were purchased during 2016 for \$250,000. All units have been included at cost.

## Pania Reef Fisheries (GP) Limited

Pania Reef Fisheries (GP) Limited is the general partner of Pania Reef Fisheries Limited Partnership, of which the Company is a 50% shareholder. HBS Tuna Limited is the other 50% shareholder and joint equal partner in Pania Reef Fisheries Limited Partnership. Pania Reef Fisheries (GP) Limited is not currently trading. The Company made a capital contribution of \$750,000 to Pania Reef Fisheries Limited Partnership during the year. The partnership made a loss of \$140,577 based on the 30 June 2017 audited financial statements.

## Shares in KAHC Investments Limited

The KAHC owns 100 shares in KAHC Investments Limited. This company has not traded during the year.

## Constitutional reporting

During the year to 30 June 2017 there have been no:

- Transactions with settlement quota that have resulted in a registered interest by way of caveat or mortgage being placed over the quota;
- Interest registered against the settlement quota shares;
- Sales or exchanges or acquisitions of AFL income shares.

## Going Forward

In May 2017 the Company was honoured to receive the Outstanding Māori Business Leadership Award from the University of Auckland. I want to acknowledge the contributions of my Director's and General Manager in the receipt of this award. I believe the award reflects the benefits of the close working relationship the Company enjoys with the NKII Board.

Going forward the Company continues to grow but this is not without its challenges. I believe our result for the year is pleasing and I offer the attached consolidated statement of the Company financial performance for your consideration.

Tihei Kahungunu!



**Rangi Manuel**  
Chairman

# Kahungunu Asset Holding Company Ltd

## Directors



**Rangi Manuel**  
*Independent  
Representative/  
KAHC Chair*

- Secretary/Trustee, Wairoa Waikaremoana Māori Trust Board
- Possible training provider to Hawke's Bay Seafoods
- Chairman, Ohuia Incorporation (discussions on horticulture proposal involving Ohuia Station)



**Taine Randell**  
*Independent  
Representative*

- Director/Owner, Kaitiaki Land & Services
- Trustee, U-Turn Trust
- Director of the Ahuriri Airport Hawke's Bay
- Director Fiordland Lobster Company
- Director Hawke's Bay Regional Investment Company
- Director Kwigarden



**Trevor Moeke**  
*Independent  
Representative*

- Company Director, Akonga Holdings Ltd, Contract Management Consultancy
- Principal Advisor, Crown Māori Capability Office of Executive, The Treasury



**Hayden Hape**  
*NKII Board Shareholder  
Representative*

- Board Member, Ngāti Kahungunu Iwi Incorporated
- Chair, Tamaki-nui-a-Rua Taiwhenua
- Member & Negotiator, Ngāti Kahungunu ki Wairarapa Tamaki nui a Rua Treaty Claimant Group



# Kahungunu Asset Holding Company Ltd

## Directors



**Pania Tyson – Nathan**  
*Independent  
Representative*

- Chair NZNP Mana
- Shareholder Financial Tyson-Nathan Associates
- Independent CE NZ Māori Tourism
- Shareholder Financial ANZ Kiwi Saver Scheme
- Shareholder Financial Native Games
- Shareholder Souther Cross Health
- Member Police Credit Union
- NZ Film Commission
- Ministerial Advisory Group on Trade



**Heather Te Au – Skipworth**  
*Independent  
Representative*

- Chief Executive Iron Māori
- HB District Health Board Member
- Chair Ngāti Ruanui Tahua limited
- Deputy Chair HB District Health Board Māori Relationship Board



**Jonathan Dick**  
*General Manager*

- Appointed General Manager 1st February 2017
- Former Director-Pouarataki, Environment & Natural Resources for Ngāti Kahungunu Iwi Incorporated
- Previous roles include work on resource and fisheries management and Treaty of Waitangi historical settlements work

# Ngāti Kahungunu Iwi Incorporated Summary Financial Statements

FOR THE YEAR ENDED 30TH JUNE 2017

## CONSOLIDATED SUMMARY STATEMENT OF FINANCIAL PERFORMANCE

	Consolidated		Parent	
	2017 \$	2016 \$	2017 \$	2016 \$
<b>INCOME</b>				
Administration & Other Operating Revenue	3,176,155	1,828,139	1,776,823	854,007
Hi Ika Revenue	2,842,641	3,568,914	-00	-00
Mauri Ora Revenue	104,863	27,100	104,863	27,100
Dividend	942,115	760,841	1,640,000	1,680,000
Dividend Revenue Te Matatini	-00	-00	2,973,890	-00
<b>Total Operating Income</b>	<b>7,065,774</b>	<b>6,184,994</b>	<b>6,495,576</b>	<b>2,561,107</b>
<b>LESS EXPENDITURE</b>				
Administration and other Operating	2,212,401	1,846,195	1,939,089	1,627,641
Hi Ika Revenue	352,462	328,939	-00	-00
Communication	52,795	31,014	52,795	31,014
Mauri Ora	1,663,774	428,401	1,663,774	428,401
Te Matatini	1,731,025	-00	1,731,025	-00
Governance	913,828	845,225	597,766	664,973
Finance Costs	442,046	309,960	-00	3,543
Total Expenses	7,368,331	3,789,734	5,984,449	2,755,572
<b>NET SURPLUS (DEFICIT) AS AT JUNE 2016</b>	<b>(302,558)</b>	<b>2,395,260</b>	<b>511,127</b>	<b>(194,465)</b>

## CONSOLIDATED SUMMARY STATEMENT OF MOVEMENTS AND FINANCIAL POSITION

### EQUITY

Opening balance as at 1 July	70,263,044	68,107,784	2,922,520	10,356,915
Net Surplus/Deficit for the year	(302,558)	2,395,260	511,127	(7,194,395)
Contributions from/ Distributions to owners	(240,000)	(240,000)	(240,000)	(240,000)
<b>TOTAL EQUITY</b>	<b>69,720,486</b>	<b>70,263,044</b>	<b>3,193,647</b>	<b>2,922,520</b>

### ASSETS

Total Non-Current Assets	67,838,254	66,007,068	2,791,305	2,757,880
Total Current Assets	10,619,965	14,977,180	1,112,937	890,392
<b>TOTAL ASSETS</b>	<b>78,458,219</b>	<b>80,984,248</b>	<b>3,904,242</b>	<b>3,648,272</b>

### LIABILITIES

Total current liabilities	837,734	821,204	710,594	725,751
Total non-current liabilities	7,900,000	9,900,000	-00	-00
<b>TOTAL ASSETS/LIABILITIES</b>	<b>8,737,734</b>	<b>10,721,204</b>	<b>710,594</b>	<b>725,751</b>

### TOTAL NET EQUITY AND LIABILITIES AS AT 30 JUNE

<b>69,720,485</b>	<b>70,263,044</b>	<b>3,193,648</b>	<b>2,922,521</b>
-------------------	-------------------	------------------	------------------

# Ngāti Kahungunu Iwi Incorporated Summary Financial Statements

FOR THE YEAR ENDED 30TH JUNE 2017

## STATEMENT OF ACCOUNTING POLICIES

### Reporting Entity

The reporting entity is Ngāti Kahungunu Iwi Incorporated (the Society). The Society is domiciled in New Zealand and is a charitable organisation registered under the Incorporated Societies Act 1908 and the Charities Act 2005.

The financial statements comprising the Society and its controlled entity, Kahungunu Asset Holding Company Limited, together the "Group", are presented for the year ended 30 June 2017.

These Group Financial Statements and accompanying notes as disclosed in this annual report are the summarised financial results of activities carried out by the Society and have not been subject to audit. These figures are derived from the full financial statements.

### Basis of Preparation

#### Statement of Compliance

The Group financial statements have been prepared in accordance with Generally Accepted Accounting Practice in New Zealand ("NZ GAAP").

Ngāti Kahungunu Iwi Incorporated is deemed to be a Public Benefit Entity – a PBEs primary objective is to provide goods and services for community or social benefit.

Ngāti Kahungunu Iwi Incorporated as a public benefit not-for-profit entity is eligible to apply Not-for-profit Public Benefit Entity International Public Sector Accounting Standards (PBE IPSAS) on the basis that it does not have public accountability and it is not defined as large. The Board has elected to report in accordance with Tier 2 Not-for-profit PBE Accounting Standards and in doing so has taken advantage of all applicable Reduced Disclosure Regime ("RDR") disclosure concessions. This decision results in the Group not preparing a Statement of Service Performance for both reporting periods.

Kahungunu Asset Holding Company Ltd is deemed to be a For-profit entity as its primary objective is to receive and manage the Fisheries Settlement assets of Ngāti Kahungunu Iwi and other funds provided for maximum commercial benefit.

Kahungunu Asset Holding Company Ltd is eligible to apply Tier 2 For-profit accounting requirements as it does not have public accountability; and is not a large for-profit sector entity as it has total expenses less than \$30 million. The Board has elected to report in accordance with New Zealand Equivalents to International Financial Reporting Standards Reduced Disclosure Regime (NZ IFRS RDR) and in doing so has taken advantage of all applicable Reduced Disclosure Regime ("RDR") disclosure concessions.

The Group Financial Statements comply with Public Benefit Entity International Public Sector Accounting Standards ("PBE IPSAS") and other applicable financial reporting standards as appropriate that have been authorised for use by the External Reporting Board for Not-For-Profit and For-Profit entities. Kahungunu Asset Holdings Company Limited has been restated from NZIFRS RDR to PBE IPSAS RDR for Group Reporting.

# Ngāti Kahungunu Iwi Incorporated Summary Financial Statements

## Summary of accounting policies

The significant accounting policies used in the preparation of these financial statements are set out in the full financial statements.

These summary Financial Statements cannot be expected to provide as complete an understanding as provided by the full financial statements. An unmodified opinion was issued on the full group financial statements.

Each tribal member is entitled to obtain a copy of the full financial statements upon request. Requests should be made to the Ngāti Kahungunu Iwi Incorporated Director of Smart Services, Ruth Wong - Ngāti Kahungunu Iwi Incorporated, Taikura House, Level 1, 304 Fitzroy Avenue, Hastings.

06 8762718 or toll free 0800 524 864. Email [ruth@kahungunu.iwi.nz](mailto:ruth@kahungunu.iwi.nz).

The Ngāti Kahungunu Iwi Incorporated Board authorised the issue of the full financial statements on 28th September 2017.



Chairman - Ngahiwi Tomoana  
28 September 2017



Board Representative - Hayden Hape



**Ngāti Kahungunu Iwi**  
INCORPORATED

# Annual Plan 2017-2018

## VISION STATEMENT

“Kahungunu – ki te whaiao, ki te ao mārama”  
“Achieving excellence in all areas of our lives”

---

## MISSION STATEMENT

“Kia maumahara ki te mana āhua ake o Ngāti Kahungunu”  
“Uphold the absolute uniqueness of the living breath of Kahungunu  
and enhance the mana and well-being of Ngāti Kahungunu Iwi”

---

## STRATEGIC OBJECTIVES

Ngāti Kahungunu – Culturally Strong  
Ngāti Kahungunu – Healthy and Vibrant  
Ngāti Kahungunu – Economically Strong  
Ngāti Kahungunu – Global Citizens  
Ngāti Kahungunu – Self Determined  
Ngāti Kahungunu – Healthy Environment  
Ngāti Kahungunu – Making our Mark

# Annual Plan

## BOARD PRIORITIES

The Board has identified three priority areas to focus our effort this financial year:

1. Mātauranga, Te Reo me ōna Tikanga;
2. Housing; and
3. Economic Development.

## OPERATIONAL STRUCTURE

The 2017-2018 operational structure consists of a small team of dedicated kaimahi. We have four units as follows: Environment & Natural Resources, Mātauranga, Te Reo me ōna Tikanga, Te Ara Toiora and Smart Services which encompasses benefits to members, finances, registration, events, communications, and administration. The Board oversees the Political Advocacy and Economic Development profile. Each Board member has a portfolio interest and are key members of focus groups to support the unit objectives of the tari.

## ANNUAL PLAN

Ngāti Kahungunu Iwi Incorporated recognises the need to review its objectives and align its strategies with the needs of whānau & hapū. The organisation will achieve this by communicating with its iwi members and by leading and advocating for and in behalf of our whānau & hapū at all levels to influence decision making and policies that will assist us to achieve our objectives.

The Ngāti Kahungunu Iwi Incorporated annual plan describes the key objectives for the iwi. These objectives are based on the following Ngāti Kahungunu Iwi Inc. strategies: Kahungunu, kia eke - The Revitalisation of Te Reo Māori within Ngāti Kahungunu, Kahungunu Ki Uta, Kahungunu Ki Tai - Marine and Freshwater Fisheries Strategic Plan and Te Ara Toiora O Ngāti Kahungunu, the Kahungunu Wellbeing Strategy.

---

### **KAHUNGUNU, KIA EKE! NGĀTI KAHUNGUNU STRATEGIC PLAN FOR THE REVITALISATION OF TE REO MĀORI WITHIN NGĀTI KAHUNGUNU**

---

- Whakamana i te Pae o Huaki Pōuri – Support the revitalisation of Ngāti Kahungunu Paepae;
- Support projects that improve the quality of reo, and promote the use of dialectal variations unique to Ngāti Kahungunu;
- Develop resources to strengthen opportunities for learning Te Reo Māori in the home;
- Research projects to attain the dialectal variations; and
- Provide cultural support across the Ngāti Kahungunu Iwi Incorporated office.

---

## NGĀTI KAHUNGUNU NATURAL RESOURCES & ENVIRONMENT KAHUNGUNU KI UTA, KAHUNGUNU KI TAI – MARINE AND FRESHWATER STRATEGIC PLAN

---

- Advocate for Ngāti Kahungunu objectives and values to be incorporated into natural resources decision making and policy developed by local, regional and central government
- Develop Kahungunu Ki Uta, Kahungunu Ki Tai Policy
- Support hapū to progress hapū management plans to enhance their role as Kaitiaki of the natural resources
- Develop quality relationships with organisations to assist us to achieve our natural resource objectives which help to build the capacity and capabilities of our people.

---

## TE ARA TOIORA O NGĀTI KAHUNGUNU KAHUNGUNU WELLBEING STRATEGY

---

- Progress the aims of Te Ara Toiora o Ngāti Kahungunu (Health & Wellbeing Strategy for Ngāti Kahungunu) by facilitating, brokering and enabling:
  - Wellbeing initiatives and strategies to progress and enhance Whānau & Hapū wellbeing;
  - Opportunities for Whānau and Hapū to gather & share wellbeing matauranga; and
  - Kahungunu Whānau Whānui Research and evaluation of Whānau Wellbeing.
- Advance the health and wellbeing of the Ngāti Kahungunu Iwi rohe by providing strategic vision, advice and progress the:
  - Tupeka Kore - Kahungunu Tobacco Free Strategy;
  - Whakarauora Rongoā – Kahungunu Rongoā Revitalisation;
  - Whakamoe Patu - Kahungunu Violence Free Strategy; and
  - Best practice whānau, hapū, iwi engagement.
- Develop the Ngāti Kahungunu Iwi Housing Strategy that will provide whānau with opportunities for happier healthy living.

---

## NGĀ POU TAUNAKI - SMART SERVICES

---

- Increase the vibrancy and wellbeing of Kahungunu whānau through events;
- Improve the registration database and increase communication opportunities;
- Provide benefits to members including scholarships, sponsorships, pātaka, online event management support, communications and database templates and other support as needed;
- Communicate with whānau to inform and keep abreast of iwi activities and opportunities for whānau development;
- Maintain the organisations financial system and processes;
- Develop a document management system to improve internal file processes; and
- Provide high level secretarial administration services to the General Manager, the Board Chairman and the Board.

---

## NGĀ TŪHONOHONOTANGA - POLITICAL

---

- Strengthen our relationship with the hapū claimant groups within the Ngāti Kahungunu rohe;
- Improve Kahungunu representation on local and regional councils;
- Influence policy developed by government agencies, local and regional councils; and
- Monitor the performance of these entities based on Kahungunu criteria.

---

## TE WHAKATIPU ŌHANGA - ECONOMIC DEVELOPMENT

---

- Develop and progress the economic status of Kahungunu whānau, hapū, iwi by continuing to work with our iwi partners to progress and implement the Ngāti Kahungunu Economic Development Strategy.



## Ngāti Kahungunu Iwi Incorporated Annual General Meeting

25 November 2017

### 11:00am Standard Business

- Mihi whakatau
- Hīmene/Karakia
- Apologies
- Maumahara
- Minutes of AGM 2016
- Receive Annual Report 2016-2017
  - Chairman's Report
  - Kahungunu Asset Holding Company Report
  - Audited Financial Statements 2016-2017
  - Annual Plan 2017-2018
- Constitutional Changes – *(Vote will be by ballot of those eligible iwi members present at the AGM. View changes on our website)*
- Re-appoint Auditor

### 11:30am Presentations

### 11.45am Himene/Karakia



Te Matatini 2017 'Volunteers'



Kaumtua Ball



**Ngāti Kahungunu Iwi**  
I N C O R P O R A T E D

TAIKURA HOUSE 304 FITZROY AVENUE, PO BOX 2406, HASTINGS 4153, NEW ZEALAND  
PHONE 06 876 2718 • FAX 06 876 4807 • TOLL FREE 0800 KA HUNGUNU (0800 524 864)  
EMAIL: [ruth@kahungunu.iwi.nz](mailto:ruth@kahungunu.iwi.nz)  
WEB: [www.kahungunu.iwi.nz](http://www.kahungunu.iwi.nz)



**AGM 25 NOVEMBER**  
**11AM SPLASH PLANET, HASTINGS**