

Hoea rā



Ngāti Kahungunu Iwi
INCORPORATED

Annual Report 2009 - 2010

Published November 2010

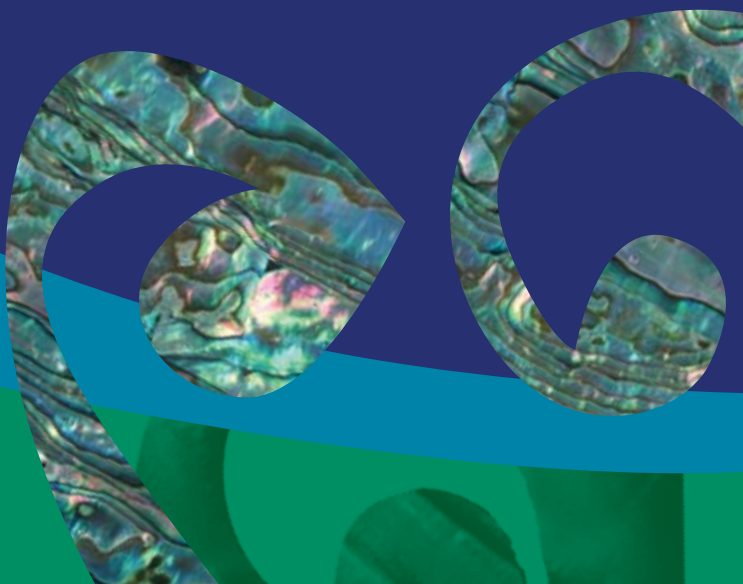


Table of Contents

	Page
Chairmans Report	1
Chief Executive's Statement	2
Board 2009-2010	3
Staff Members 2009-2010	3
Vision & Mission	4
The Four Strategic Themes	4
Tino Rangatiratanga	5
Ngāti Kahungunu Iwi Incorporated Organisation Structure	7
Kahungunutanga	8
Taiao	9
Whanaungatanga	10
Kahungunu Asset Holding Company Report	16
Financial Statements	17
Audit Report	25
Annual Plan 2010-2011	26

Chairperson's Report



Kahungunu ki te whaiāo, ki te ao mārama
Mauri ora ki te rangi - Takitimu
Mauri ora ki te whenua - Te Matau a Māui
Mauri ora ki te tangata - Te ure whakaparati o Kahungunu
Tēnā tātau katoa

This year has been the hardest hitting on whānau since the 1980's due to the global financial collapse that has hit business institutions, finance companies and small businesses and eventually whānau. Ngāti Kahungunu Iwi has experienced a growing number of unemployment and a growing number of destitute whānau.

Despite all the negatives, this year has been remarkable in that hundreds of our mokopuna and tamariki have expressed their multiplicity of talents across the rohe throughout the year in the Kahungunu calendar of events ranging from the AGM Pa Sports day, Waitangi Day and Matariki amongst others. So against a backdrop of fiscal meltdowns, deepening poverty and other negative social indicators with whānau opting to move to Australia, our rangatahi have lit a beacon for us all in their own tūrangawaewae. Wairoa heaved to the strains of their young performers, Te Whanganui-ā-Orotū hip-hopped to their rhythms, Heretaunga sashayed and leapt at every opportunity, Tamatea hosted, Tāmaki-nui-ā-Rua braved the storms, Wairarapa toasted their successes while all our scholars excelled as well. Rangatahi have exemplified the spirit of being Kahungunu, fearless and bold, out there and proud ambassadors for whānau and hapū.

In June of this year Ngāti Kahungunu rangatahi produced a spectacular and inspirational opening to the NZ Māori vs England game in celebration of 100 years of Māori Rugby. 500 inspired, healthy, strong and vibrant kotiro and tane made their mark emphatically triggering a national and international resonance. Rugby games will never be the same again and I doubt that any World Cup fixture can match the passion and focus of our rangatahi. We must invest more in them for our mokopuna have got the mojo!

In support of whānau we have applied our efforts at national and regional levels to influence policies that address the current difficulties. Me whawhai tonu atu. While there has been a chorus of overtures for the iwi to get directly involved in services, our only input will always be at a political level.

Even though there has been widespread economic hardship, our financial situation has stabilised and improved and will continue to do so with the stewardship of both our organisation and the Kahungunu Asset Holding Company.

Again I am pleased to report the annual events as depicted in this report and proud to present them to the iwi.

Mate atu he tētēkura
Ara mai he tētēkura
Mate atu he reanga
Ara mai he reanga
Taku wahine purotu
Taku tāne purotu
Tihei Kahungunu!

Ngāhiwi Tomoana
Chairman
Ngāti Kahungunu Iwi Incorporated

Chief Executive's Statement



Tēnā rā tātau te pūkahu o ngā uri huhua o Ngāti Kahungunu

Mātua ana te whakaaro ki ngā tini aituā e hingahinga ake nei i runga i ō tātau marae maha

Ko te pō rā ki a koutou, ko te pō rā ki a koutou

Auraki mai ana ki a tātau te tirohanga kanohi

Tātau e pae nei, tēnā rā koutou, Tīhei Kahungunu!

Informed by our Iwi's 25 year vision, the office was set clear priorities for the last 12 months. Contained within this report are highlights of those achievements. I wish to thank the staff and Board for their ongoing commitment and leadership in striving towards meeting the aspirations of our people.

As the Chairman has alluded in his introduction, the resounding 500 strong Rangatahi haka at McLean Park on June 23 made Kahungunu's mark domestically, nationally and internationally; and it is to our rangatahi that we look to for motivation and energy to help inform what we do today and enable that vibrancy to resonate across all our whānau, hapū and iwi.

The year on reflection saw the instigation of 3 significant internal Reviews: the Board; the Office; and the Asset Holding Company. The Board looked at its own performance and explored areas for improvement. Kanohi ki te kanohi hui were held at each Taiwhenua and a survey was made available for all to make comment. A set of recommendations have been developed and endorsed by the Board for implementation. The Office Review aimed to build a more strategic and integrated Iwi office for what lies ahead. Newly established directorates resulted in Reo, Tikanga & Mātauranga; Fisheries & Taiao and Support Services. In addition the Iwi office continues its ongoing commitment to our Te Ara Toiora or Social Responsibilities strategy which includes Violence free, Tobacco free, Hauora, Rangatahi and Rongoa initiatives. Looking ahead the completion of the Company Review will be foreshadowed by the development of Kahungunu's own Economic Strategy.

Despite the financial climate of continued uncertainty both organizations have performed above expectation. We end the year with a net equity of \$54,229,190 and an operating surplus of \$1,541,850.

Hei konā mai koutou i roto i ngā mihi

Kia tau te mauri

Nāhaku noa, nā

A handwritten signature in dark ink, appearing to read 'Meka Whaitiri'.

Meka Whaitiri

Chief Executive Officer

Ngāti Kahungunu Iwi Incorporated

Board Members 2009-2010



Ngāhiwi Tomoana
Chairman



Haami Hilton
Kaumātua



Mike Paku
Heretaunga (new)



Linette Rautahi
Tāmaki Nui ā Rua



Nelson Rangi
Wairapa



Robert Ropiha
Tamatea



Rill Meihana
Wairoa



Roy Pewhairangi
Te Whanganui-ā-Orotū (new)



Bill Hamilton
Taurahere



Owen Purcell
Taurahere



Bevan Taylor
Te Whanganui-ā-Orotū
(outgoing)



Christine Teariki
Heretaunga
(outgoing)

Staff Members 2009-2010



Meka Whaitiri
Chief Executive



Keri Ropiha
Director of Social
Services (Outgoing)



Danielle Keil-Lambert
Executive
Assitant



Kerrin Fair
Database
Administrator



Dr Adele Whyte
Director of
Fisheries



Ruth Wong
Communications
Advisor



Te Rangi Huata
Events & Promotions
Manager



Alex Edwards
Te Reo
Research Analyst



Meagan Joe
Poutiri-A-Mātauranga



Hine Hape
Finance Officer



Ngaio Tiuka
Fisheries Analyst



Jenny Smith
Kaitoko Whānau



Connie Collins
Kaitoko Whānau



Shiana Rongo
Receptionist (Outgoing)



Jeremy Tātere MacLeod
Director of Te Reo,
Tikanga and Mātauranga



Eru Tahuri
(Acting) Director of
Te Reo, Tikanga and
Mātauranga
(New role) Website
Project Coordinator



Marina Sciascia
Public Relations
Manager
(Outgoing)



Kym Hamilton
Research & Special
Projects Manager
(Outgoing)



Ngaire Aben
Director of Te Reo,
Tikanga and
Mātauranga (Outgoing)



Roy Pewhairangi
Violence Free
Coordinator
(Outgoing)



Naumai Ropitini
Finance Manager
(Outgoing)

Vision & Mission

The vision and mission statements have been defined by Ngāti Kahungunu Iwi as follows:

Vision statement

“Kahungunu - Ki Te Whaiao, Ki Te Ao Mārama”
Achieving excellence in all areas of our lives

Mission statement

Kia maumahara ki te mana āhua ake o Ngāti Kahungunu
Uphold the absolute uniqueness of the living breath of Kahungunu
“To enhance the mana and well-being of Ngāti Kahungunu Iwi”

Kahungunu 2026 - The Guiding Principles

These guiding principles set the boundaries within which the iwi works to ensure the vision and mission continue to remain the central focus.

- **Te Tūhonohono o Kahungunu**
Tapestry of whakapapa that makes us who we are.
- **Te Hononga Māreikura o Takitimu**
How we relate to other iwi / waka.
- **Te Kotahitanga**
League of peoples.
- **Te Whakaputanga o te Ao**
Declaration of independence.
- **Te Tiriti o Waitangi**
Our Relationship with the Crown.
- **Kanohi ki kanohi ~ “Face to face”**
Pokohiwi ki pokohiwi ~ “Shoulder to shoulder”
How we do things

The Four Strategic Themes

Tino Rangatiratanga

Accountable and transparent leadership

Kahungunutanga

Revitalising our cultural strength

Taiao

Protecting our environment

Whanaungatanga

Strong Vibrant healthy whānau, hapū and iwi

To ensure the vision and mission of the iwi remains the central focus for iwi development, the Ngāti Kahungunu Iwi Incorporated Board has continued to focus its priorities on the four strategic themes, Tino Rangatiratanga; Kahungunutanga; Taiao and Whanaungatanga.

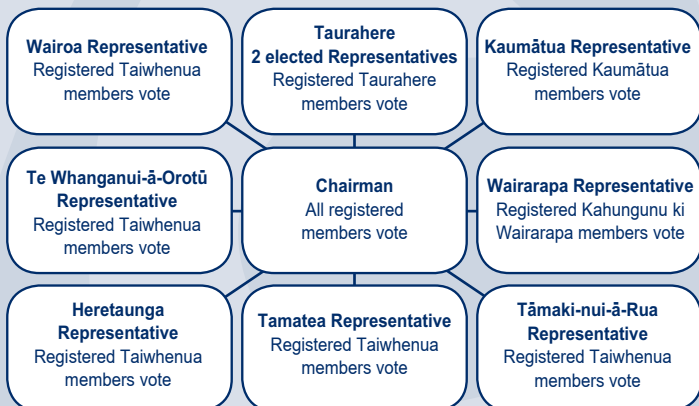
This annual report is written to reflect the activities, performance and strategic outcomes achieved within the four strategic themes.

Tino Rangatiratanga

Accountable and transparent leadership

The Ngāti Kahungunu Iwi Incorporated Board is the Iwi authority for Ngāti Kahungunu, and is made up of ten members elected through a process of integrity in accordance with the constitution. This year the Board held its triennial election which successfully concluded on Friday 30 April 2010. A two-way accountability to whānau, to marae / hapū, to Taiwhenua / Rohe, and to the Iwi ensures the dissemination of information to and from the iwi.

The Ngāti Kahungunu Iwi Incorporated Board Representation Flow Chart



In April 2010, a total of 20,233 members were registered, 9,115 of these members were of Kahungunu descent 18 yrs and over and eligible to vote. Of the 9,115 voting mailers issued, 2,135 were returned. This represents a return of 23.4% compared to the 2007 return of 25.45%. Of the 2,135 voting papers returned, 1,921 were returned by post (90%) and 214 (10%) were returned online. This ratio is consistent with other online/postal voting returns for other elections where both voting methods are offered.

The election process was conducted by 'Independent Election' services and a seamless process took place.

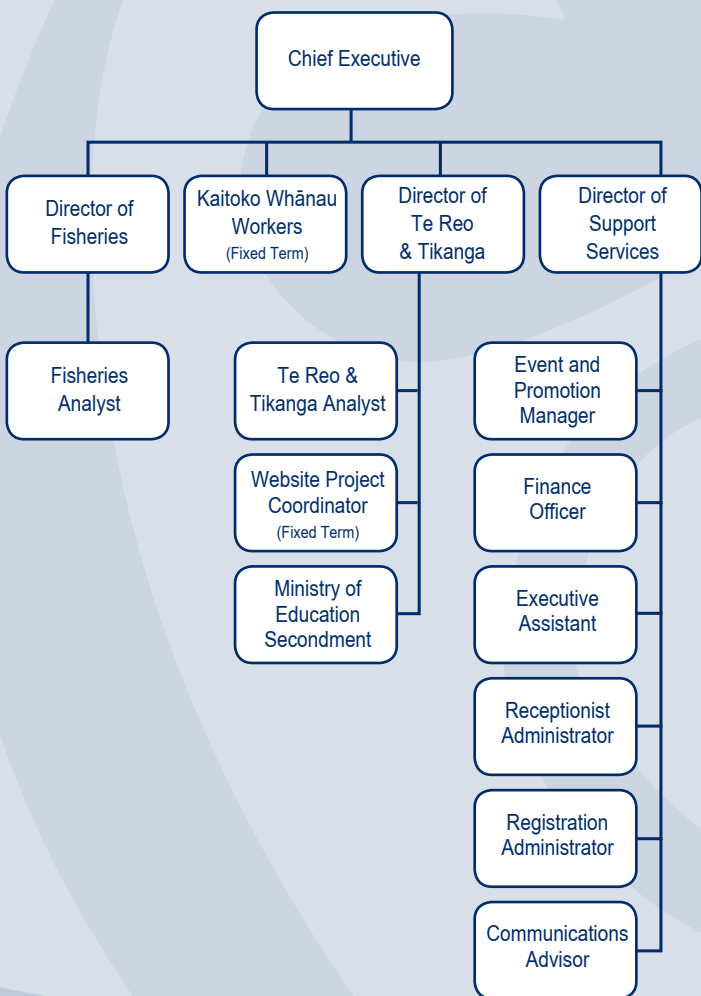
The Board Members were elected unopposed or by ballot as follows:

ELECTION POSITIONS	SUCCESSFUL CANDIDATE
Chairperson	Ngāhiwi TOMOANA
Wairoa Taiwhenua representative	Rill Riwai Karangaroa MEIHANA
Te Whanganui-a-Orotū representative	Roy PEWHAIRANGI
Heretaunga representative	Michael Anthony PAKU
Tamatea representative	Robert Charles ROPIHA
Tāmaki-nui-ā-Rua representative	Linette Keita RAUTAHĪ
Wairarapa representative	Nelson Francis RANGI
Taurahere representative	Te Huia Bill HAMILTON and Owen PURCELL
Kaumātua representative	Haami Tekuru Timu HILTON

A full report of the election process and outcome is available online www.kahungunu.iwi.nz

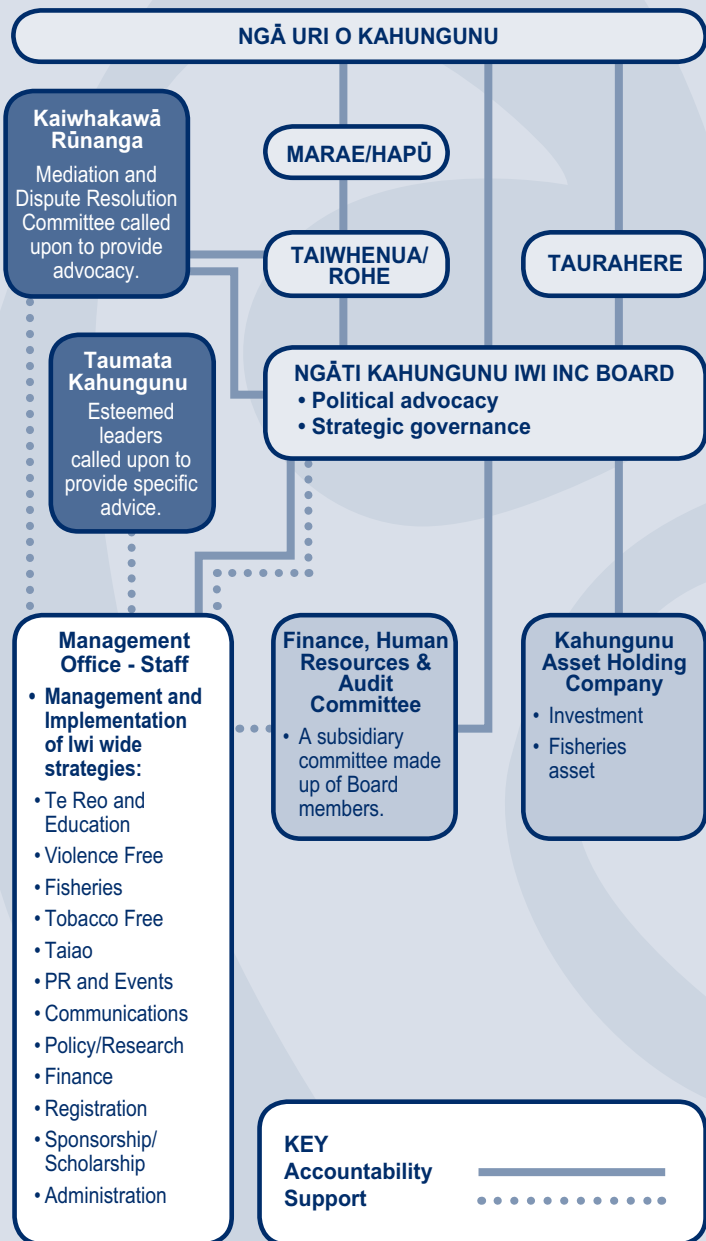
Accountable and transparent leadership

In 2009 the tari undertook an organisational restructure to build greater strategic capability and capacity; add value to hapū and marae development; and establish an integrated style of operating within the iwi office through the implementation of new systems and a firm structure. It also incorporated a senior management team of directors who would align their strategic outputs directly with the iwi's 25 year vision. The diagram below depicts the newly implemented structure that took affect in October 2009 with the Fisheries and Kaitoko Whānau units established in April 2010.



Ngāti Kahungunu Iwi Incorporated Organisation Structure

Ngāti Kahungunu Iwi Incorporated is governed by ngā uri a Kahungunu members who have the opportunity to participate through marae, taiwhenua/rohe and iwi elections. This diagram depicts the structure of the iwi from marae/hapū to governance level.



Culturally Strong

Retention of our cultural identity is paramount for it is the soul of the Iwi, and is what makes us unique.

In June 2009 the Tihei Kahungunu booklet and CD were launched and soon after, 300 sets consisting of the passport size booklet containing Kahungunu waiata, moteatea, karakia and an accompanying CD were delivered to every Marae, Kura Kaupapa and Kōhanga Reo in the Kahungunu rohe. This was closely followed by a wave of Tihei Kahungunu wananga being held at each Taiwhenua and in many marae and at several places where Kahungunu whānau meet. This valuable resource has been used at several hui held in the rohe.

The revitalization of Ngāti Kahungunu reo and tikanga is important to our identity as Kahungunu. For this purpose the Te Reo Unit continued to identify opportunities to engage with providers, key stakeholders, Kaumātua, rangatahi and other relevant networks and have participated in, and contributed to the developmental programmes and supported reo initiatives.

The concept, development and promotion of the Tōku Iwi Board game of Kahungunu Trivia has proved a success and steady sales to registered members give comfort that in some Kahungunu homes, whānau are having fun while learning basic history lessons about Kahungunu.

The development of the Ngāti Kahungunu Reo Resource website has also been a great outcome which provides access to learning rack cards, posters, flash cards and some waiata.

A review of the 'He Mahere Hai Haumanu I Te reo O Ngāti Kahungunu' Strategy has determined a way forward with new objectives and initiatives.

To help encourage young men to participate in and realise their aspirations to korero on the paepae, an opportunity was given to rangatahi to attend the Koroneihana in August 2009. This proved valuable for those who attended.



**Kia tika! Kia rere!
Kia Māori te reo!**

Protecting our Environment

Ngāti Kahungunu Iwi Incorporated continues to place the protection of our environment as a top priority. We believe that our environment has a direct influence on the health of our people; therefore we are interested in preserving and protecting our air, water, lands, and our resources for the benefit and survival of future generations.

In July 2009, Ngāti Kahungunu Iwi Incorporated invited rangatahi to become future Kahungunu eco warriors by taking part in a Taiohi Taiao Rangahau Wananga. Twenty four 12–16 year old Kahungunu students from around the rohe attended a four day wananga as research assistants that included a field study of Napier Port in Hawke's Bay. During the wananga students learned about biosecurity, environmental issues, research, project planning and mātauranga Māori. In addition the rangatahi were given the opportunity to participate in a competition by submitting their 500 word opinions about protecting the environment and the threats to our whenua, moana and wai Māori. Twelve Kahungunu students submitted opinion pieces and were presented with a taonga for their efforts. Their views were published on our iwi website.

The Kahungunu ki Uta Kahungunu ki Tai (KKUKKT): Marine and Freshwater fisheries strategic plan was launched at the NKII AGM in November 2008. The KKUKKT strategy aims to reintegrate the management of fisheries, freshwater and coastal resources within the Kahungunu rohe and to build hapū and iwi capability and capacity. In June 2009 the Kahungunu ki Uta Kahungunu ki Tai (KKUKKT) steering group signed off on the implementation plan for the KKUKKT strategy. In April 2010 a Kahungunu Fisheries Management Unit was established at the iwi office to assist implementing the strategy. The unit consists of the Director of Fisheries, Dr Adele Whyte and Research Analyst, Ngaio Tiuka.

Since the establishment of the unit, a Statement of Intent and an annual work plan has been developed to guide us towards the achievement of our vision:

*Kaitiakitanga o ngā rawa a Tangaroa mō ngā uri whakatupu;
Guardianship of Tangaroa's multitudes on behalf of
all the generations yet to come.*

Relationships across sectors have continued to be developed and strengthened, hapū have been assisted to develop their own draft rohe moana management plans and information has been shared through improved communication including the production of a Fish Unit newsletter 'Hurumanu'.

Strong Vibrant Healthy Whānau, Hapū and Iwi

TE ARA TOIORA

All activities, initiatives and outcomes lead to progressing Te Ara Toiora - the Ngāti Kahungunu Wellness Strategy and the Pou of Strong Vibrant Healthy Whānau, Hapū and Iwi.

Te Ara Toiora encompasses the Iwi Karanga of:



VIOLENCE FREE

TOBACCO FREE

The Kaitoko Whānau team consists of Jenny Smith and Connie Collins who started in April 2010 and their role is to enable, facilitate, implement and progress Te Ara Toiora - the Ngāti Kahungunu wellbeing strategy.

EVENTS

Ngāti Kahungunu Iwi Incorporated produces events with the goal to strengthen cultural and communal ties, build pride in Kahungunutanga and provide economic opportunities for iwi members from such interaction.

The Kahungunu Sport Awards hosted by Tamatea attracted a sell-out crowd and the Kahungunu Sportsman for 2009 was champion shearer Johnny Kirkpatrick.

The AGM Pa Sports Day at Splash Planet last year proved popular with 32 marae/whānau groups participating with 1200 players competing in 76 teams and supported by 2,200 supporters.

Kahungunu Day Waitangi Day this year attracted 15,000 iwi members and six Matariki events from Wairoa to Wairarapa attracted 13,500 participants. Another 1,000 people attended 20 smaller Matariki events funded by the iwi and Te Puni Kokiri.

Kahungunu Regional Kapa Haka Contest proved popular with a great public turn out at Te Aute College. First place winners were Te Rerenga Kotuku and Runners-Up were Tamatea Ariki Nui who will go on to represent Kahungunu at Te Matatini in Gisborne next year.

As a practice run to the Rugby World Cup in 2011, Ngāti Kahungunu joined Hawke's Bay Rugby Union to host the NZ Māori versus England game attended by 17,000 avid fans. This proved a great success with the iwi leading ceremonial protocols, providing anthem singers, ground announcers, entertainment and a pre-game haka by 500 youth from Wairoa to Wairarapa. NZ Māori won 35-28.

Whanaungatanga

The Rugby World Cup offers many exciting opportunities for our communities and Ngāti Kahungunu Iwi is working closely with members to organise the George Nepia Exhibition at the Wairoa Museum, the Rugby Haka Festival in 5 towns and the Fiesta of Lights Drive Thru, Hastings. Other events during this time include the Waiata Māori Music Awards and Takitimu Festival. Ngāti Kahungunu was the only iwi to be a part of a region's bid to host games.

Māori businesses have benefited from these events by providing services in event management, security, labour, fireworks, entertainment and sales of food, craft, artwork, merchandise, fashion accessories, clothing and taonga.

Ngāti Kahungunu Iwi Incorporated's long term plan is for these events to become the premier seasonal gathering for the region at that time of year.

Events have been recorded and reports can be viewed online in the Communications Newsletter Archives www.kahungunu.iwi.nz



CELEBRATING 100 YEARS OF MĀORI RUGBY

Ngāti Kahungunu Iwi Incorporated
www.kahungunu.iwi.nz



KAHUNGUNU
Strong Vibrant Rangatahi
Making their mark
Traditionally and Culturally Strong
Internationally Recognised

COMMUNICATIONS

Ngāti Kahungunu Iwi Incorporated is committed to communicating with its membership and the wider community to allow whānau the best opportunities to keep abreast of events and activities that enhance the mana and wellbeing of whānau, hapū and iwi. To achieve this the iwi offers communication through the following channels: A bi-monthly Hōea ra newsletter, 'Panui ki te iwi' an email panui service, daily community notices via Radio Kahungunu, Board meeting summary notes posted on our iwi website soon after each meeting, media releases highlighting the iwi's status in dealing with specific issues, a toll free calling number that is accessible to whānau living outside the Hawke's Bay region, advertising through local, regional and national newspapers, timeless videos of events and special activities held in the past, and a website that is updated on a regular basis. All communication archives including media releases, board summaries and the Hōea ra newsletter can be viewed on the iwi website www.kahungunu.iwi.nz. A website based calendar of events allows whānau to keep abreast of iwi activities and opportunities.

One identified area of concern is the increasing number of incorrect addresses. Although members are encouraged to keep the iwi informed when contact details change, this is an ongoing concern. The iwi continues to network with organizations such as NZ Post, Tuhono and the Electoral Enrolment Centre to update addresses where we can.

SPONSORSHIPS

Cultural and sporting pursuits are an important aspect of personal, whānau, hapū and iwi development. This year Ngāti Kahungunu Iwi Incorporated distributed sponsorship funding to 47 individuals and groups to encourage and recognise the pursuit of cultural and sporting excellence by Ngāti Kahungunu. Recipients represented and promoted Ngāti Kahungunu in either a national or international forum.

Individual or Group	Event or Tournament
Ngāa Puumanawawhiti	Yale University Summer School
Daniel Procter	World Surfing Games
Deena Puketapu	NZ Under 16 Basketball
Narelle Huata	Kahurangi to North America
Te Timatanga Ararau Trust	Iron Māori Event
Ashleigh Ahipene	2009 Arafura Games - Kick Boxing
Geoffery Ahipene	2009 Arafura Games - Kick Boxing
Sara Rangi	Wairoa Sportsperson of the year
Whariki Trust	Kura Tuarua "Tu Tangata" Whakataetae
Kahu o te Rangi te Kōhanga Reo	Social Netball League
Jaden Martin	Muay Thai World Champs
Breana Jones	NZ U16 Girls Basketball
Rugby League HB	NZ Māori Rugby League Tournament
Ngatai Huata	NHW Music - Waiata Māori Music Awards
He Kahui Wairarapa	Kapahaka 12's Festival
Hurunuiarangi	Kaumātua Ball Kaumātua Ball
Jocelyn te Huia	Oceania Handball Competition
Kane Hodges	NZ Under 16 Boys Basketball
Te Matau A Maui	Māori Touch Nationals
Billy Glover	Iron Māori Support
William Winitana	Iron Māori Support
Crystal Jessup	HB U7 & U9 Touch
Jasmine Brown	'Tri Māori' Hawke's Bay Team

Individual or Group	Event or Tournament
Tumarangai Sciascia	Tamatea Arikini Kapa Haka Cultural Trip
Mateus Marsh	NZ Under 14 Boys Basketball
Marion Lake	National Waka Ama Sprint Championships
Aaliyah Smiler-Ahkong	NZ Under 16 Girls Basketball
Anaru Bartlett	World Indigenous Touch Tournament
Mere Whaanga	Gifted Sands Exhibition
Choices	Maui Challenge
Dale Thomas	World Outrigger Canoe Sprints
Wairoa Thai Boxing Club	Wairoa Muay Thai Fight Night
Moana Hutana	DIY Mara - Rongomaraeroa
Melanie Gettins	ISF XII Women's World Softball Championships
Michael Nuku	2010 World Outrigger Canoe Sprints
Rose Pere	Ngāti Hinekura ki Waikaremoana Wananga
Hana-Lee Kereru-Wainohu	World Outrigger Canoe Sprints
Julie Ferguson	International Women's 7's Tournament
Tamatea Arikini Kapa Haka	Tamatea Arikini Kapa Haka – Italy
Hukarere Old Girls' Association	Fashion Show
Alita Harris	NZ Under 18 Women's Basketball
Beverly Te Huia	Women's Beach Handball World Championships
Te Kōhanga Reo Tari a Rohe O Kahungunu	Kōhanga Reo Matariki Ball
Hukarere Girls Netball Team	Hukarere Girls College Senior Netball
He Toa Takitini Claimant Group	He Toa Takitini Wananga with Sir Tipene O'Reagan
Bronwyn Harman	2010 Family Works Fashion Show
Hawks NBL Basketball	700 tickets + 36 corporate at 9 home games

SCHOLARSHIPS

Ngāti Kahungunu Iwi Incorporated continues to distribute benefits to its members to encourage and recognise the pursuit of academic knowledge and qualifications by Ngāti Kahungunu tauira. During the 2009-2010 financial period forty (40) tauira studying in their third or final year of their degree or post graduate studies received \$500.00 each. Two (2) \$5000.00 scholarships were awarded to postgraduate tauira undertaking research in Environmental Science and Te Reo me ōna tikanga. A list of successful tauira follows:

Name	Rohe	Institute of Learning (Course of Study)
Karalyn Norma Ropina Davie	Heretaunga	E.I.T Hawke's Bay (Bachelor of Nursing)
Natalie Ngahuia Goldsmith	Heretaunga	Victoria University (Bachelor of Arts in Māori Resource Management & Psychology)
Rawinia Riripeti Hape	Heretaunga	Te Wananga O Aotearoa (Graduate Diploma in Professional Supervision)
Patrick Phillip Hape	Heretaunga	Victoria University (Bachelor of Arts with Honours - Māori Language and Māori studies)
Raella Donna Elizabeth Kahuroa	Heretaunga	Waikato University (Graduate Diploma in Early Childhood)
Peter Bowen Kireka	Heretaunga	Te Wananga O Raukawa (Masters in Education)
Rebekah Rose Munro	Heretaunga	E.I.T Hawke's Bay (Bachelor of Nursing)
Lisa-Marie Pohatu	Heretaunga	Otago University (Diploma in Public Health)

Whanaungatanga

Name	Rohe	Institute of Learning (Course of Study)
Te Rangimarie Saunders	Heretaunga	E.I.T Hawke's Bay (Bachelor of Nursing)
Courtney Michelle SciaScia	Heretaunga	Otago University (Bachelor of Commerce - Accounting)
Hana Rose Rongomaiwahine Scott	Heretaunga	Victoria University (Masters in Architecture)
Meri Louise Te Hikarangi Wichman - Robin	Heretaunga	Te Wananga O Aotearoa (Maunga Kura Toi Degree of Māori Visual Arts)
Diana Caroline Annavale Norling	Ngā Parirau O Te Ika	Te Ika Waikato University (Graduate Diploma of Teaching - Early Childhood)
Sariah Atareta Parahi	Ngā Parirau O Te Ika	Waikato University (Bachelor of Social Sciences)
Pani Sinclair Chamberlin	Tamatea	Waikato University (Bachelor of Law)
Jessica Courtenay Molnar	Te Upoko O Te Ika	Whitireia Community Polytechnic (Bachelor of Nursing)
Rebecca Janice Adams	Te Upoko O Te Ika	Victoria University (Bachelor of Arts, Majoring in Psychology)
Jacob Tarawhai Edwards	Te Whanganui-ā-Orotū	Otago University (Bachelor of Medicine / Bachelor of Surgery)
Roberta Maraea Matiria Hawaikirangi	Te Whanganui-ā-Orotū	Te Wananga O Aotearoa (Bachelor of Māori Art)
Mathew Mullany	Te Whanganui-ā-Orotū	Otago University (Postgraduate Diploma of Arts)
Hemi Skipper	Te Whanganui-ā-Orotū	Te Wananga O Aotearoa (Bachelor of Māori Art - Toi Paemataua)
Dianne Taihaere Nathan Wepa	Te Whanganui-ā-Orotū	Massey University (PHD - Māori Patients Perspectives of Cultural Safety)
Carl Victor Anderson	Wairarapa	Otago University (Bachelor of Commerce)
Rebecca Mary Jury	Wairarapa	Massey University (Bachelor of Health Science)
Aroha Pani Pirere	Wairarapa	Waikato University (Bachelor of Teaching & Bachelor of Arts)
Pania Michelle Kathrine Reiri Smith	Wairarapa	Te Wananga O Aotearoa (Te Korowai Akonga / Bachelor of Teaching - Māori)
Blair Tiaki Bennett	Wairoa	Waikato University (Bachelor of Sports and Leisure)
Matariki Ngarongo Brown	Wairoa	Massey University (Graduate Diploma in Teaching)
Shane Earl Gilmer	Wairoa	Bay of Plenty Polytechnic (Bachelor of Applied Science / Major Environmental Monitoring)
John Richmond Hatherly	Wairoa	Otago University (Bachelor of Commerce)
Christina Whitney Marshall	Wairoa	Massey University (Bachelor of Science Degree)
Kaea Gordon Matenga	Wairoa	Auckland University (Bachelor of Health Science)
Tesa Maria Porter	Wairoa	Otago University (Bachelor of Medicine and Surgery)
Christine Tracey Smith	Wairoa	Te Wananga O Aotearoa (Bachelor of Iwi Environmental Management)
Everard Patrick Smith	Wairoa	Te Wananga O Raukawa (Kaitiakitanga Putaiao)
Michelle Tokoroa (Shelly) Tai	Wairoa	Te Wananga O Raukawa (Degree Māori Law and Philosophy)

Name	Rohe	Institute of Learning (Course of Study)
Joseph Taurua Terrill	Wairoa	E.I.T Hawke's Bay (Bachelor of Arts Māori)
Henare Te Rongonui Waihape	Wairoa	Waikato University (Masters Degrees in Law and Science)
Pita Hukinga Walker - Robinson	Wairoa	Te Wananga O Aotearoa (Bachelor of Iwi Environmental Management)
Tuirina Kaa Memory Wehi	Wairoa	Waikato University (Bachelor of Arts - Honours)

Research Scholarship Recipients

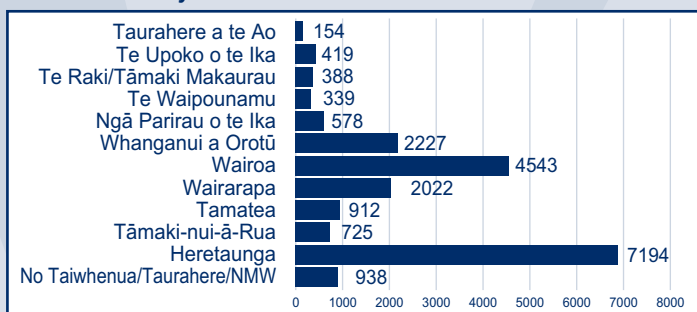
Mere Joslyn Whaanga	Wairoa	Waikato University (PHD Thesis - Rata - Traditional practice to agricultural shareholding.)
Zeb Tamihana Nicklin	Wairoa	Te Wananga O Raukawa (Poutahu Whakaakoranga)

REGISTRATIONS

Ngāti Kahungunu Iwi Incorporated continues to encourage registrations at events and through activities. The Registration database enables us to identify registered people who are entitled to benefits, scholarships, and other assistance, and distinguish people who are able to offer skills or services to the iwi. It maintains the contact information of our membership and allows us the opportunity to communicate more effectively with our members.

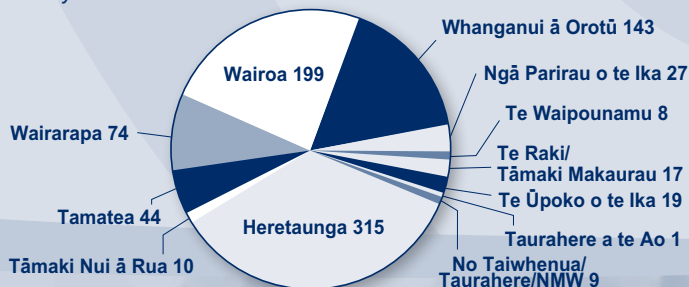
Ngāti Kahungunu Iwi Incorporated currently has 20,493 registered members. 866 members registered during this financial year between 1 July 2009 and 30 June 2010. The bar graph below indicates members by Taiwhenua/Rohe and Taurahere. The pie graph shows the increase of new members by area.

Total Members by area



New Members by area

1st July 2009 - 30th June 2010



Kahungunu Asset Holding Company Ltd Chairman's Report

For the year 2009 - 2010

Tihei Mauriora

He honore he kororia ki te atua
He maungarongo ki te whenua
He whakaaro pai ki ngā tāngata katoa
Ka mihi rā ki ō tātau mate e hinga mai rā, e hinga atu rā
Haere koutou ngā mate, haere atu rā
Moe mai koutou i te Ariki
Ka āpiti hono, tātai hono
Rātau te hunga mate ki a rātau
Ka āpiti hono, tātai hono
Tātau te hunga ora ki a tātau
Tēnā tātau katoa



It is my pleasure to present to you the annual report of Kahungunu Asset Holding Company Limited (KAHC) for the year ended 30 of June 2010.

Kahungunu Asset Holding Company Limited (KAHC) was established in 2005 by Ngāti Kahungunu iwi Incorporated (NKII) to receive and manage the Treaty of Waitangi Fisheries settlement on behalf of Ngāti Kahungunu. The initial (population based) settlement was received in 2006. Since then the company's role has been expanded to manage other assets of Ngāti Kahungunu Iwi Incorporated. In July 2009 KAHC received the coastline based settlement quota and quota shortfall cash as a result of a settlement agreement with neighbouring iwi.

The key assets owned by KAHC include fishing quota, income shares in Aotearoa Fisheries Limited (who in turn own 50% of Sealord and a range of other seafood companies), shares in Napier Mussels Limited, shares in Fiordland Lobster Company Limited, some non-settlement quota shares in CRA4 and cash.

The company has the following objectives:

- To build intergenerational wealth for Ngāti Kahungunu
- To maximise the financial return on the assets
- To build a sustainable capital base for the future.

The Company's strategy includes diversification of the asset portfolio. In 2009/2010, the company has actively searched for a suitable commercial property investment. It has also developed a concept and framework for its non-fisheries investments called Aunty's Garden.

A full feasibility study is underway to test the Aunty's Garden concept before any investment decisions are made.

The operating profit for the 2009-2010 year was \$2,733,835 compared to \$2,028,815 the previous year.

I am also pleased to report an increased equity position of \$52,222,904 for the year ended 30 June 2010 compared to \$34,370,866 for the 2009 year. This increase in equity is posted after payment of the \$1,400,000 dividend to the shareholder, Ngāti Kahungunu Iwi Incorporated.

I take this opportunity to thank the Directors for their co-operation and the wisdom that has been evident in the deliberations of the Board to date. Paora Ammunsen, resigned his position as director during the year and the Board extends its appreciation to Paora for his contribution to the company during his tenure. The shareholder is working on a process for the appointment of a replacement director.

Kati mō tēnei ripoata

Tēnei te mihi ki a koutou e pae nei

Tēnā koutou katoa

Harry Haerengarangi Mikaere
Chairman

Statement of Financial Performance

FOR THE YEAR ENDED 30 JUNE 2010

		Consolidated*		Parent*	
		2010	2009	2010	2009
		\$	\$	\$	\$
INCOME					
Administration		827,361	425,751	214,548	247,687
Hi Ika		2,996,702	2,607,609	88,900	53,216
Mātauranga		313,873	341,854	313,873	341,854
Hauora		114,500	197,202	114,500	197,202
Mauri Ora		62,617	401,752	62,617	401,752
Taiao		61,914	33,886	61,914	33,886
Merchandising		9,294	7,166	9,294	7,166
Governance		3,478	931,635	1,403,478	2,240,204
Total Operating Income	2	<u>4,389,739</u>	<u>4,946,855</u>	<u>2,269,124</u>	<u>3,522,967</u>
LESS EXPENDITURE					
Administration		1,012,998	984,272	870,912	760,699
Communication		48,028	59,914	48,028	59,914
Hi Ika		668,559	496,101	79,354	107,598
Mātauranga		295,752	390,022	295,752	390,022
Hauora		52,180	170,432	52,180	170,432
Mauri Ora		260,788	852,000	260,788	852,000
Taiao		22,324	59,356	22,324	59,356
Merchandising		5,441	4,324	5,441	4,324
Governance		481,820	674,764	369,764	493,327
Total Expenses	3	<u>2,847,889</u>	<u>3,691,185</u>	<u>2,004,542</u>	<u>2,897,672</u>
Net Surplus/(Deficit) for year		<u>1,541,850</u>	<u>1,255,670</u>	<u>264,582</u>	<u>625,295</u>

* Consolidated means group (refer to note 1 on page 19). Parent means Ngāti Kahungunu Iwi Incorporated.

Statement of Movements In Equity

FOR THE YEAR ENDED 30 JUNE 2010

Opening Equity as at 1 July	37,169,136	35,913,466	3,998,272	3,372,977
Net Surplus/Deficit for the year	1,541,850	1,255,670	264,582	625,295
Total recognised revenues & expenses	1,541,850	1,255,670	264,582	625,295
Contributions from/Distributions to owners				
Fishing Asset Settlement	4 15,518,204	-	-	-
Less: Taiwhenua/				
Taurahere distribution	5 -	-	-	-
	<u>15,518,204</u>	<u>-</u>	<u>-</u>	<u>-</u>
Closing Equity as at 30 June	6 54,229,190	37,169,136	4,262,854	3,998,272

These financial statements must be read in conjunction with the accompanying notes

Statement of Financial Position

AS AT 30 JUNE 2010

		Consolidated		Parent	
		2010	2009	2010	2009
		\$	\$	\$	\$
ASSETS					
NON CURRENT ASSETS					
Motor vehicles & plant	7	210,137	133,826	207,437	129,980
Quota	8	26,730,371	9,796,871	-	-
Investments & advances	9	20,847,070	20,847,070	2,218,485	1,218,485
Total Non Current Assets		47,787,578	30,777,767	2,425,922	1,348,465
CURRENT ASSETS					
Bank and cash	10	10,884,345	9,173,533	4,952,575	4,352,945
Debtors		40,340	273,432	66,452	323,413
Investments & advances	9	-	-	-	1,000,000
Prepayments		-	11,386	-	11,386
Stock on hand	11	460	2,000	460	2,000
Settlement quota receivable	12	-	-	1,617,057	-
Accrued income		571,002	235,647	118,914	109,388
Total Current Assets		11,496,147	9,695,998	6,755,458	5,799,132
TOTAL ASSETS		59,283,725	40,473,765	9,181,380	7,147,597
LIABILITIES					
NON CURRENT LIABILITIES					
Vehicle lease	13	44,350	-	44,350	-
Total Non Current liabilities		44,350	-	44,350	-
CURRENT LIABILITIES					
Creditors		375,038	467,786	239,029	312,480
Provisions	14	4,275,501	2,506,252	4,275,501	2,506,253
Vehicle lease within 1 year	13	44,350	16,650	44,350	16,650
Taiwhenua/Taurahere grants payable	5	45,429	45,429	45,429	45,429
Income in advance		269,867	268,512	269,867	268,512
Total Current liabilities		5,010,185	3,304,629	4,874,176	3,149,324
TOTAL LIABILITIES		5,054,535	3,304,629	4,918,526	3,149,324
EQUITY					
Retained earnings	6	6,361,468	4,983,072	3,053,287	2,952,159
Reserve fund	6	1,209,567	1,046,113	1,209,567	1,046,113
Fisheries Asset Settlement	6	46,658,155	31,139,951	-	-
TOTAL EQUITY		54,229,190	37,169,136	4,262,854	3,998,272
TOTAL LIABILITIES AND EQUITY		59,283,725	40,473,765	9,181,380	7,147,597

These financial statements were authorised for issue by the board on 15 October 2010.



Chairman - Ngāhiwi Tomoana



Board Representative - Rill Meihana

These financial statements must be read in conjunction with the accompanying notes

Notes to and Forming Part of the Financial Statements

FOR THE YEAR ENDED 30 JUNE 2010

1 STATEMENT OF ACCOUNTING POLICIES

Reporting Entity

Ngāti Kahungunu Iwi Incorporated (the society) is an incorporated society established under the Incorporated Societies Act 1908 and is a registered charity under the Charities Act 2005.

Ngāti Kahungunu Iwi Incorporated has several subsidiary entities.

The reporting entity comprises the society and consolidated group of the society and its subsidiaries. The financial statements are prepared under generally accepted accounting principles.

Measurement Base

The accounting principles recognised as appropriate for the measurement and reporting of earnings and financial position on an historical cost basis are followed with the exceptions as noted below.

Differential Reporting

The society qualifies for differential reporting as it is not publicly accountable, and not large in size. The society has taken advantage of all available differential reporting exemptions except for FRS 19 GST.

Specific Accounting Policies

The following specific accounting policies which materially affect the measurement of financial performance and financial position have been applied.

(a) Consolidation

The purchase method of consolidation has been applied in preparing the consolidated financial statements. All inter entity transactions and balances have been eliminated on consolidation.

(b) Operating Revenue

This represents revenue earned from the sale of the society's products and services, investment income on the society's investments, and income earned on contract for services net of any credit allowed. Project related income is recorded on an accruals basis, consistent with the degree of project completion.

(c) Depreciation

Depreciation has been calculated using rates permitted by the Income Tax Act 2004.

Vehicles	20-32% DV
Computer Equipment & Plant	10-60% DV

(d) Income Tax

The society is registered as a charitable entity under the Charities Act 2005 so qualifies for an income tax exemption under the Income Tax Act 2007.

(e) Fixed Assets

Fixed assets are stated at cost less accumulated depreciation.

Notes to and Forming Part of the Financial Statements

FOR THE YEAR ENDED 30 JUNE 2010

(f) Investments and Advances

Investments and Advances are recorded at cost or estimated net realisable value if there has been a permanent diminution in value.

(g) Quota and Shares

The shares in Aotearoa Fisheries Limited and Quota received under the Fisheries Asset Settlement process have been included at the value established by Te Ohu Kaimoana on transfer. Market acquisitions of shares or quota are recorded at cost and adjusted for impairment where necessary.

(h) Inventory

Inventories are valued at the lower of cost and net realisable value.

(i) Debtors

Debtors are stated at their estimated net realisable value.

(j) Taiwhenua/Taurahere distribution

Taiwhenua/Taurahere distributions are recorded as a movement in equity.

Changes in Accounting Policies

There have been no changes in the accounting policies during the year. All policies have been consistently applied.

	Consolidated		Parent	
	2010 \$	2009 \$	2010 \$	2009 \$
2 INCOME				
Income includes				
Dividends	120,590	91,431	1,400,000	1,400,000
Interest Income	421,743	306,526	172,637	64,732
Gain on Sale of Properties	-	804,204	-	804,204
Rental Income	-	17,318	-	17,318
Takitimu Festival Income	-	335,209	-	335,209
3 EXPENSES				
Expenses include				
Depreciation	56,296	54,039	53,908	53,684
Bad and doubtful debts	-	-	-	-
Audit fees	20,142	23,548	12,496	16,040
Board member honoraria/ committee fees	224,551	185,367	152,551	132,867
Donations	18,016	161,882	18,016	161,882
Loss on sale of assets	5,243	1,743	5,243	1,743
Rent	55,631	14,148	55,631	14,148
Takitimu Festival Expenses	-	656,102	-	656,102

Notes to and Forming Part of the Financial Statements

FOR THE YEAR ENDED 30 JUNE 2010

4 FISHING ASSET SETTLEMENT

In accordance with the Fisheries Act 2004, Kahungunu Asset Holding Company has received fishing settlement assets to manage on behalf of Ngāti Kahungunu Iwi. The company has received additional settlement of fishing quota during the year, valued at \$15,316,443 by TOKM at the date of transfer, plus cash totalling \$320,761 of which \$119,000 was paid to Ohu Tiaki O Rangitane Te Ika A Maui Trust and Te Atiawa ki te Upoko O Te Ika A Maui Potiki Trust to gain agreement on Southern boundary (net settlement \$15,518,204).

5 TAIWHENUA /TAURAHERE GRANTS PAYABLE

The board requires certain criteria to be met prior to payments of grants. The expectation is that each Taiwhenua and Taurahere can fulfil the criteria.

6 EQUITY	Consolidated		Parent	
	2010 \$	2009 \$	2010 \$	2009 \$
Opening Balance - Retained earnings	4,983,072	3,879,537	2,952,159	2,478,999
Net Surplus for the year	1,541,850	1,255,670	264,582	625,295
Less: Taiwhenua Distribution		-	-	-
Less: Transfer to Reserve Fund	(163,454)	(152,135)	(163,454)	(152,135)
Closing balance Retained earnings	6,361,468	4,983,072	3,053,287	2,952,159
Opening Balance Reserve Fund	1,046,113	893,978	1,046,113	893,978
Add: Transfer from Retained earnings	163,454	152,135	163,454	152,135
Closing Balance Reserve Fund	1,209,567	1,046,113	1,209,567	1,046,113
Opening Balance Fisheries Settlement Assets	31,139,951	31,139,951	-	-
Add: Fisheries Settlement Assets Distribution	15,518,204	-	-	-
Closing Balance Fisheries Settlement Assets	46,658,155	31,139,951	-	-
Total equity	54,229,190	37,169,136	4,262,854	3,998,272

For prudential purposes the board of Ngāti Kahungunu Iwi Inc has resolved to set aside into the reserve fund an amount of annual income each year as an enduring capital base for the Society.

7 MOTOR VEHICLES & PLANT

Parent 2010

	Original Cost	Accum Depn	Closing Value
Vehicles	255,719	108,825	146,894
Plant & Machinery	175,523	114,980	60,543
	431,242	223,805	207,437

Consolidated 2010

	Original Cost	Accum Depn	Closing Value
Vehicles	255,719	108,825	146,894
Plant & Machinery	181,020	117,778	63,242
	436,740	226,603	210,137

Parent 2009

	Original Cost	Accum Depn	Closing Value
Vehicles	195,986	129,883	66,103
Plant & Machinery	154,338	90,461	63,877
	350,324	220,344	129,980

Consolidated 2009

	Original Cost	Accum Depn	Closing Value
Vehicles	195,986	129,883	66,103
Plant & Machinery	158,594	90,871	67,723
	354,580	220,754	133,826

Notes to and Forming Part of the Financial Statements

FOR THE YEAR ENDED 30 JUNE 2010

8 QUOTA

In 2007 and 2010 the Kahungunu Asset Holding Company received quota as part of the Fisheries Settlement.

Under the Māori Fisheries Act 2004, the company must not sell its settlement quota until two years after transfer from Te Ohu Kaimoana. After two years, the company can only sell its settlement quota to another iwi or to a member of the Te Ohu Kaimoana group. The quota has been recorded at the value placed on it for settlement purposes.

In addition to the settlements, further quota has been purchased and is recorded at cost.

9 INVESTMENTS	Consolidated		Parent	
	2010	2009	2010	2009
Investments in Subsidiaries	\$	\$	\$	\$
Shares TRONK Ltd (100%)	-	-	15,732	15,732
Shares Kahungunu Asset Holding Company (100%)	-	-	2,200,000	1,200,000
	-	-	2,215,732	1,215,732
Shares in other companies				
Aotearoa Fisheries Ltd	19,874,735	19,874,735	-	-
Fiordland Lobster Company	953,850	953,850	-	-
Napier Mussels Ltd (40%)	-	-	-	-
	20,828,585	20,828,585	-	-
Advances				
Tamatea Taiwhenua	18,485	18,485	18,485	18,485
Napier Mussels Ltd	195,592	195,592	195,592	195,592
Less: Provision	(195,592)	(195,592)	(195,592)	(195,592)
	18,485	18,485	18,485	18,485

Amount due from/(to) Subsidiaries

Tu Kahu Ltd	-	-	-	-
TRONK Ltd	-	-	(15,732)	(15,732)
	-	-	(15,732)	(15,732)
	20,847,070	20,847,070	2,218,485	1,218,485

Amount due from/(to) Current Subsidiaries

Kahungunu Asset Holding Company	-	-	-	1,000,000
	-	-	-	1,000,000

The Kahungunu Asset Holding Company has received, as part of the 2007 Fisheries Settlement 7,874 shares in Aotearoa Fisheries Ltd (AFL). This represents a 6.3% holding in that company. The shares have been recorded at the value established by Te Ohu Kaimoana on transfer. The net book value of the Kahungunu Asset Holding Company's shareholding in AFL as disclosed in its Annual Report at 30 September 2009 was \$22,547,575 (2008: \$20,043,676). Under the Māori Fisheries Act 2004, the company must not sell its AFL shares until two years after transfer from Te Ohu Kaimoana. After two years, the company can only sell its AFL shares to another iwi or to a member of the Te Ohu Kaimoana group.

The Kahungunu Asset Holding Company owns 11,590 ordinary shares and 100,000 redeemable convertible shares in Fiordland Lobster Company (FLC). This represents a 5.0% holding in that company. These shares have been included at cost. The net book value of the Kahungunu Asset Holding Company's share holding in FLC as disclosed in its Annual Report at 31 March 2010 was \$2,658,504 (2009: \$1,788,061).

Notes to and Forming Part of the Financial Statements

FOR THE YEAR ENDED 30 JUNE 2010

The shares in Napier Mussels Limited have been transferred to Kahungunu Asset Holding Company during 2009 at nil value. The fully provisioned advance to NML remains in the parent entity.

The Society's wholly owned subsidiary companies are registered in New Zealand.

	Consolidated		Parent	
	2010	2009	2010	2009
	\$	\$	\$	\$
10 BANK ACCOUNTS				
Petty Cash	60	100	60	100
Cheque Account	552,261	106,568	533,036	(30,952)
Call Account	220,408	208,227	2,660	68,772
Term Deposits	10,111,616	8,858,638	4,416,819	4,315,025
	<u>10,884,345</u>	<u>9,173,533</u>	<u>4,952,575</u>	<u>4,352,945</u>

Deposits totalling \$2,658,444 (2009 \$2,506,254) arise from fishing receipts and are being held in trust subject to resolution of disputes regarding allocation.

11 STOCKS ON HAND

Merchandise	460	2,000	460	2,000
	<u>460</u>	<u>2,000</u>	<u>460</u>	<u>2,000</u>

12 SETTLEMENT QUOTA RECEIVABLE

Kahungunu Asset Holding Company Ltd holds CRA3 quota to the value of \$1,617,057 which is payable to Ngāti Kahungunu Iwi Inc. as part of an agreed settlement between Ngāti Kahungunu Iwi Inc. and Rongomaiwahine Iwi Trust (refer note 16)

13 MOTOR VEHICLE FINANCES

Total instalments outstanding	88,700	16,650	88,700	16,650
	<u>88,700</u>	<u>16,650</u>	<u>88,700</u>	<u>16,650</u>
Payable within 1 year	44,350	16,650	44,350	16,650
1-2 years	44,350	-	44,350	-
2-5 years	-	-	-	-
	<u>88,700</u>	<u>16,650</u>	<u>88,700</u>	<u>16,650</u>

14 PROVISIONS

The provision is an amount of \$2,658,444 set aside to settle the dispute with the Rongomaiwahine Iwi Trust in accordance with the deed of settlement signed 21 July 2006. The exact amount of the settlement is not known as the dispute is still to be settled.

15 RELATED PARTY TRANSACTIONS

The society enters into transactions with and on behalf of its subsidiaries Te Runanganui O Ngāti Kahungunu Ltd, and the Kahungunu Asset Holding Company. The society collects and distributes funds on behalf of and to constituent Taiwhenua and Taurahere organisations.

There are common board members between the society and the Taiwhenua and Taurahere organisations.

During the year the Kahungunu Asset Holding Company paid a dividend of \$1,400,000 to the society.

Notes to and Forming Part of the Financial Statements

FOR THE YEAR ENDED 30 JUNE 2010

RELATED PARTY TRANSACTIONS (continued)

The society paid fees to the directors during the year. The value of these are shown in note 3.

There was \$17,000 outstanding at balance date relating to these transactions.

The Kahungunu Asset Holding Company paid consultancy fees to Chris O'Reilly Consultancy Limited in which Mr C. O'Reilly a director, has an interest; to Brierley Business Development Ltd in which Mr P Brierley, a director, has an interest and to Mrs C Teariki. These were paid at normal commercial rates, and there was \$13,802 outstanding at balance date.

H Mikaere is a director of Kahungunu Asset Holding Company Ltd, Aotearoa Fisheries Ltd and Napier Mussels Ltd. A Ropiha is the General Manager of Kahungunu Asset Holding Company Ltd and a director of Fiordland Lobster Company Ltd. Transactions between Kahungunu Asset Holding Company and Fiordland Lobster Company include quota sold to FLC, dividends and directors fees received from FLC.

N Tomoana is a director of Treaty Tribes Coalition Ltd and Chairman of Te Ohu Kai Moana Trustee Ltd. Membership fees were paid from Ngāti Kahungunu Iwi Incorporated to Treaty Tribes Coalition Ltd. Te Ohu Kai Moana Trustee Ltd paid Ngāti Kahungunu Iwi Incorporated income relating to the "Kahungunu ki Uta Kahungunu ki Tai" project. Te Ohu Kai Moana Trustee Ltd also distributed Fisheries Settlement Assets to the Kahungunu Asset Holding Company as detailed in note 6.

16 SUBSEQUENT EVENTS

On 23 August 2010, the society was deregistered from the Charities Register for failing to file annual returns as required by Section 42 of the Charities Act. Re-registration was achieved on 7 September 2010.

There have been no other events subsequent to balance date that have an effect on these financial statements.

In 2009 the following were disclosed as subsequent events:

Kahungunu Asset Holding Company issued a further 1 million shares to its shareholder, Ngāti Kahungunu Iwi Incorporated.

Ngāti Kahungunu Iwi Incorporated has reached a settlement with Rangitane which resulted in the transfer of 501m quota shares valued at \$16.9m (plus \$0.3m in cash) from Te Ohu Kai Moana to Kahungunu Asset Holding Company Limited. Of this, the CRA3 quota is transferable to Rongomaiwahine Iwi Trust as part of an agreed settlement.

17 COMMITMENTS AND CONTINGENT LIABILITIES

The society agreed to purchase a double hulled waka for \$500,000 with settlement no later than 1 January 2011. At the request of the vendor, settlement has been deferred.

The board has made a commitment to put \$1,000,000 cash or in kind towards the Kahungunu Cultural Centre.

18 OPERATING LEASE COMMITMENTS

Non-cancellable operating lease rentals are payable by the parent as follows:-

	2010 \$	2009 \$
Within one year	35,302	56,593
Greater than one year	73,546	99,038
	<u>108,848</u>	<u>155,631</u>

To the Members of Ngāti Kahungunu Iwi Incorporated

We have audited the financial report on pages 17 to 24. The financial report provides information about the past financial performance and Ngāti Kahungunu Iwi Incorporated (the society) and group and financial position as at 30 June 2010. This information is stated in accordance with the accounting policies set out on pages 19 and 20.

Board's Responsibilities

The Board is responsible for the preparation of a financial report which gives a true and fair view of the financial position of the society and group as at 30 June 2010 and of the results of operations for the year ended 30 June 2010.

Auditors' Responsibilities

It is our responsibility to express an you an independent opinion on the financial report presented by the Board.

Basis of Opinion

An audit includes examining, on a test basis, evidence relevant to the amounts and disclosures in the financial report. It also includes assessing:

- the significant estimates and judgements made by the Board in the preparation of the financial report, and
- whether the accounting policies are appropriate to the society and group circumstances, consistently applied and adequately disclosed.

We conducted our audit in accordance with New Zealand Auditing Standards. We planned and performed our audit so as to obtain all the information and explanations which we considered necessary in order to provide us with sufficient evidence to obtain reasonable assurance that the financial report is free from material misstatements, whether caused by fraud or error. In forming our opinion we also evaluated the overall adequacy of the presentation of information in the financial report.

Other than in our capacity as auditors we have no other relationship with or interests in the society or its subsidiary companies.

Unqualified Opinion

We have obtained all the information and explanations that we have required.

In our opinion:

- proper accounting records have been kept by the society as far as appears from our examination of those records; and
- give a true and fair view of the financial position of the society and group as at 30 June 2010 and the results of operations for the year ended on that date.

Our audit was completed on 15 October 2010 and our unqualified opinion is expressed as at that date.



Chartered Accountants
Hastings, New Zealand



Ngāti Kahungunu Iwi
INCORPORATED

Annual Plan 2010-2011

The Ngāti Kahungunu Iwi Incorporated annual plan details the annual plan objectives, activities and performance measures that will be focused from July 2010 to June 2011. The activities are based on the following Ngāti Kahungunu Iwi Inc. strategies that promote Strong, Vibrant, Healthy Whānau, Hapū & Iwi.

He Mahere Rautaki Hai Haumanu I Te Reo O Ngāti Kahungunu
The Revitalization of Te Reo o Ngāti Kahungunu

Kahungunu Ki Uta, Kahungunu Ki Tai
Marine and Freshwater Fisheries Strategic Plan

Te Ara Toiora O Ngāti Kahungunu
The Kahungunu Well-being Strategy

The work within the annual plan will be undertaken by designated staff, supported by the Support Services team.

**HE MAHERE RAUTAKI HAI HAUMANU I TE REO
O NGĀTI KAHUNGUNU
STRATEGIC PLAN FOR THE REVITALIZATION OF
TE REO O NGĀTI KAHUNGUNU 2006 – 2027
“Nāhana te kahu i whatu, hai tānikoniko mā te iwi”**

ANNUAL PLAN OBJECTIVES	ACTIVITIES
Support the Revitalisation of Ngāti Kahungunu Paepae.	<p>Create a Succession Planning Toolkit that contains advice and planning templates.</p> <p>Publish and Produce Resources to promote Kahungunu reo on Kahungunu Paepae and in all domains.</p> <p>Complete the review of He Mahere Rautaki Hai Haumanu I Te Reo O Ngāti Kahungunu.</p>
Kahungunu Cultural Centre	Produce a Feasibility Study/Scoping Report on the implementation of the Kahungunu Cultural Centre.
Grow Kahungunu Leadership	Plan and hold at least ten (10) Tihei Kahungunu wānanga throughout the Kahungunu rohe and Taurahere.
Support the Mātauranga and Reo Strategy	Manage the Ministry of Education Kahungunu Cultural Standards (KCS) and Community Based Learning Initiatives (CBLI) contracts.
Provide cultural support to the Te Ara Toiora and Kahungunu ki Uta Kahungunu ki Tai Strategies	Provide cultural support for the Kaitoko Whānau and Fish Directorates as necessary to promote cross office integration.

**TAIAO
‘Protecting our Environment’**

Advocate the broad environmental interests of Ngāti Kahungunu at a national level.	<p>Maintain a watching brief on changes to environmental legislation and governance structures;</p> <p>Attend and contribute to pan-iwi engagement fora where iwi input is sought on Te Taiao.</p>
Monitor, contribute or assist with input to regional plans and policy throughout the Kahungunu rohe to promote our interests in the whenua, ngā awa, ngā roto, and the rohe moana.	<p>Investigate and analyse the need for input to regional and district plan and policy changes;</p> <p>Where tangata whenua input is lacking due to limited resources or capacity, contribute expertise within prescribed budget.</p>

Annual Plan

ANNUAL PLAN OBJECTIVES

ACTIVITIES

Develop and maintain relationships with personnel from other iwi working within the Taiao function.

Maintain and utilise existing networks for promotion of Ngāti Kahungunu Taiao interests;
Communicate effectively with other iwi resource management personnel;
Support pan-iwi advocacy to promote our environmental interests.

Build lasting relationships with government departments, industry and statutory managers with a role in Te Taiao issues, for greater Kahungunu influence over natural resource management.

Where our hapū/taiwhenua are not involved with local and regional government, facilitate greater interaction;
Assist Crown agencies, industry, consultants and local government with direct engagement of mandated tangata whenua representatives;
Assist with provision or peer review of technical data.

Promote proactive use of the Ngāti Kahungunu communications network to better inform the Board, hapū, marae, and rangatahi of key environmental issues and concerns.

Provide bi-monthly reports to senior management and the NKII Board;
Utilise alternative media to raise awareness of pending environmental issues within our rohe;
Contribute to the Ngāti Kahungunu website on Taiao issues.

Develop a training strategy that promotes and enables kaitiakitanga through building skills, expertise and capacity of hapū and iwi to respond to and participate in Te Taiao.

Develop and hold wananga for Ngāti Kahungunu rangatahi around Te Taiao;
Contribute to other wananga within our rohe with an environmental focus.

Facilitate environmental research opportunities to promote Kahungunutanga throughout our rohe, Aotearoa and the world.

Investigate environmental research opportunities with multi-unit participation;
Promote the use of cultural impact assessments within local government resource management structures;
Investigate the use and operation of Global Information Systems for ready access, storage and retrieval of cultural data.

Maintain a watching brief on government ministries relevant to Kahungunu Taiao interests and changes or amendments to environmental legislation.

Maintain regular contact with key ministries including MFE, MAF, ERMA, DOC, and MED.

**KAHUNGUNU KI UTA, KAHUNGUNU KI TAI
MARINE AND FRESHWATER FISHERIES STRATEGIC PLAN**
Kaitiakitanga o ngā rawa a Tangaroa mō ngā uri whakatupu;
Guardianship of Tangaroa's multitudes on behalf of all the
generations yet to come.

ANNUAL PLAN OBJECTIVES	ACTIVITIES
Establish fisheries governance infrastructure and operational capacity within Ngāti Kahungunu	Te Roopu Whakamana Governance hui. Identify national and international research funding streams and apply for funding to support Fish Unit Activities.
Assist hapū development of rohe moana management plans to support local management of fisheries.	Hold a series of 2-day wananga to enable all interested hapū to come together to develop a rohe-wide rohe moana (and awa/waiū management template. Encourage and assist hapū to use the management template to create their own rohe moana (awa/waiū) management plan.
Develop fisheries information system(s) and database(s). Use databases to inform decisions and research needs.	Explore available options for database(s), include analysis of options to protect intellectual property and to collect information without breaching copyright protection. Present options to hapū.
Develop relationships across sectors with influence over fisheries in the rohe and work towards agreement on local management of fisheries.	Develop rohe-wide strategy for engagement with all users. Invite all stakeholders to a hui.
Develop a communications strategy and 'one-door policy' that co-ordinates all fisheries activities within Kahungunu.	Draft a communication and 'one-door' policy for endorsement. Advertise communication strategy both internally and externally. Work with NKII communication team to promote the fisheries activities within Kahungunu: Promote fisheries as a way to revitalize hapū and whānau wellbeing. Maintain a visible Kahungunu presence at Seaweed 2011 events. Fish Unit to make themselves available in each Taiwhenua on a rotational basis.

Annual Plan

ANNUAL PLAN OBJECTIVES

ACTIVITIES

Develop a training and development strategy that builds skill, expertise and capacity of hapū and iwi fisheries managers and rangatahi.

Support and develop rangatahi hui.
Develop relationships with local schools, develop and deliver educational and research opportunities.
Identify training opportunities for hapū e.g. SeaFIC, NIWA etc and source funding.
Match training with needs as identified by hapū rohe moana plans.

Develop policy that supports hapū engagement with fisheries users across all sectors.

Nationwide strategy for engagement of all relevant agencies, including Ministry of Fisheries and Te Ohu Kaimoana.
Invite all stakeholders to a hui.

Assist hapū to develop joint ventures with the Kahungunu Asset Holding company.

Work with the Asset Holding Company and hapū to identify potential commercial joint venture opportunities.

Share the Kahungunu ki Uta, Kahungunu ki Tai integrated fisheries management model across the Pacific and the world.

Explore international research opportunities and develop a joint research funding proposal.
Explore cross-disciplinary research opportunities within the NKII office and develop a joint research funding proposal e.g. Vibrant, Healthy Communities (Whānau Ora);
Culturally strong (tikanga and tangaroa).

TE ARA TOIORA O NGĀTI KAHUNGUNU Strong, Vibrant, Healthy Whānau, Hapū & Iwi

Coordinate Opportunities for more effective service delivery to achieve whānau resilience and wellbeing by:

- Encouraging a seamless service environment for whānau.
- Eliminating barriers that inhibit wellbeing of whānau.

Develop a Kahungunu ki Ahuriri me Heretaunga profile.
Review Social Services funding and criteria for the Hawke's Bay Region.
Assess social service delivery for the Hawke's Bay region.

Facilitate, broker and advocate support with extended whānau and agencies on behalf of whānau.

Engage with 40 whānau – assessing whānau needs, provide guidance and support and assist whānau to gain full access to government and community based support services to address their identified needs.
Develop a whānau database to track the success of whānau we are assisting and to identify prospective projects.

Annual Plan

ANNUAL PLAN OBJECTIVES	ACTIVITIES
Develop wellbeing initiatives and strategies to progress and enhance whānau, hapū, iwi wellbeing	Assist and facilitate the development of a Kahungunu Tobacco Action Group Plan to enhance the Kahungunu Tobacco Free Strategy. Review the Hawke's Bay DHB Tu Mai Health Strategy.
Progress the aims of the Te Ara Toiora o Ngāti Kahungunu – Wellbeing Strategy for Ngāti Kahungunu.	Review the Te Ara Toiora Wellbeing Strategy. Assist and facilitate the Te Tumu Whakahaere o Te Wero Board.
Increase quality resources to whānau to achieve wellbeing.	Investigate and develop a resource kit for tamariki covering: <ul style="list-style-type: none">• Keeping Safe• Self help directory/kit/roadmap
To provide opportunities for whānau to: <ul style="list-style-type: none">• Gather knowledge for wellbeing• Create an opportunity to plan for and evaluate wellbeing whānau.	Hold two (2) Wananga covering: <ul style="list-style-type: none">• Te Ara Toiora – the pathway to wellbeing.• The 'State of Ora' for Kahungunu.

SUPPORT SERVICES

“Provide quality service to support and realise the Annual Objectives”

Establish a Support Services unit that provides proactive support to staff, the board and our members.	Provide opportunities for staff up-skilling and training. Prepare clear policies and processes for staff and board. Develop systems that deliver quality support. Record and capture Iwi activities. Provide quality administration support to the staff/ board.
Enhance communications and registrations by participating and encouraging participation in community events at a local, regional and national level.	Plan and organise regular engagements with Taiwhenua and Taurahere offices to develop two way communications. Develop and write and disseminate twelve (12) press releases that enhance iwi events and strategic statements. Keep the iwi website updated with current information including the calendar of events.

Annual Plan

ANNUAL PLAN OBJECTIVES	ACTIVITIES
Implement ICT priorities 1-9.	<p>Prioritize the ICT objectives.</p> <p>Develop and manage the iwi website for Te Reo and Fish units.</p> <p>Develop and produce e-panui.</p> <p>Develop a generic database for all directorates.</p>
Develop and enhance relationships with suppliers and providers.	<p>Network with potential suppliers and providers to ensure best opportunities.</p> <p>Review current contracts and agreements.</p> <p>Implement regular reviews.</p> <p>Explore opportunities for out-sourcing sales.</p>
Delivery of successful events throughout the rohe.	<p>Plan, organise and promote the following annual activities:</p> <ul style="list-style-type: none">• Matariki Celebrations in each region;• AGM Pa Sports Day 2010;• Kahungunu Pakeke Golf Tournament;• Kahungunu Sports Awards;• Waitangi/Kahungunu day celebrations; <p>Engage in the planning and iwi Involvement around the Rugby World Cup 2011.</p>
Continue to support the provision of scholarships and sponsorships to members.	<p>Review the sponsorship policy to ensure sponsorship opportunities for members who represent Kahungunu;</p> <p>Review the scholarship criteria to ensure scholarship opportunities for Kahungunu taura in their 3rd or final year of tertiary study;</p> <p>Provide a Research Scholarship to three (3) taura studying in either ICT, Environmental Science or Te Reo.</p>
Develop an Economic Strategy to promote economic support throughout the rohe.	<p>Develop an economic strategy to promote the growth of rangatahi.</p> <p>Promote leadership activities to enhance the economic wellbeing of our people.</p>

Images from 2009 AGM Pa Sports





AGM 27 NOVEMBER
9AM SPLASH PLANET, HASTINGS