

Hoea rā



Ngāti Kahungunu Iwi
INCORPORATED

Annual Report 2010 - 2011

Published October 2011

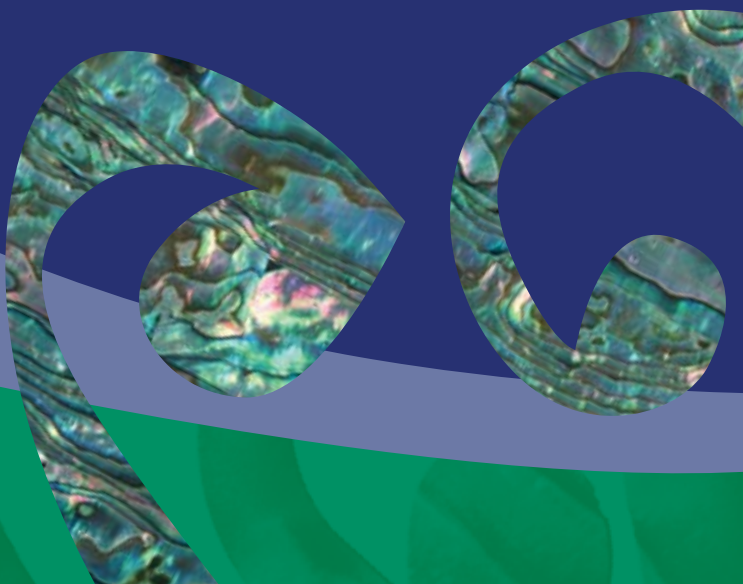


Table of Contents

	Page
Purpose, Vision & Mission	1
Chairperson's Report	2
Chief Executive's Statement	3
Board Members 2010-2011	4
Board Member Statements	5
Staff Members 2010-2011	10
Ngāti Kahungunu Iwi Incorporated Organisation Structure	11
Culturally Strong	12
Healthy, Sustainable Environment	14
Strong, Vibrant, Healthy Whānau	14
Benefits to Members	17
Kahungunu Asset Holding Company Report	22
Financial Statements	24
Audit Report	33
Annual Plan 2011-2012	34



Kahungunu ki Tamaki Nui Ā Rua say "It's all about whānau".

Pictured from front left: Kelly Barnes, Sharon Mason, Marion Reiri, Stacey Shailer and Kaylene Kani. Back row: Melody Grace, Woppi Hape and Vanessa Hape.

Purpose, Vision & Mission

Ngāti Kahungunu Iwi Incorporated, with the mandate to represent the people of Ngāti Kahungunu, is the governing body for all aspects of Ngāti Kahungunu Iwi development.

The purpose of Ngāti Kahungunu Iwi Incorporated is to:

- Promote or assist the education of Ngāti Kahungunu Iwi;
- Promote the custody and preservation of the beliefs, customs and language of Ngāti Kahungunu Iwi;
- Promote the social and economic welfare advancement and vocational training of Ngāti Kahungunu Iwi;
- Promote personal, whānau and community health and wellbeing and raise the living standards of Ngāti Kahungunu Iwi;
- Promote high quality communications to and for the benefit of the members of Ngāti Kahungunu Iwi.

Strategic Objectives

In September 2001 consultation with whānau throughout the rohe of Kahungunu occurred. Whānau shared their views, aspirations and desires which helped shape the development of a vision to guide Ngāti Kahungunu into the future. The vision, known as Kahungunu 2026, outlined the vision and mission statements and identified seven strategic objectives to focus on. The Ngāti Kahungunu Iwi Inc. planning framework continues to outline priorities, activities and desired outcomes that link directly to the strategic objectives within the Kahungunu 2026 vision.

The seven strategic objectives are:

- Culturally Strong;
- Healthy and Vibrant Whānau;
- Economically Strong;
- Informed and Participating Citizens in the World;
- Independent and Self Determined;
- Healthy, Thriving and Sustainable Environment
- Making our Mark

Vision Statement

“Kahungunu - ki te whaiao, ki te ao mārama”

Achieving excellence in all areas of our lives

Mission Statement

Kia maumahara ki te mana āhua ake o Ngāti Kahungunu

Uphold the absolute uniqueness of the living breath of Kahungunu

“To enhance the mana and well-being of Ngāti Kahungunu Iwi”

Reporting

Ngāti Kahungunu Iwi Incorporated has an obligation to provide an ‘Annual Report’ for its membership to account for the previous financial year 1 July 2010 – 30 June 2011. This document provides a summary report against the objectives set out in the 2010-2011 Annual Plan. It includes steps taken to increase the registration database and gives an overview of the organisation’s performance, including changes in the value of its assets, profit distribution and the annual audited financial report.

Chairperson's Report



Kahungunu e!

Koinei te reo pōwhiri i runga i te ngākau mahaki,
e rere atu nā i ngā kākā wahanui o te poari matua,
tēnā tātau katoa.

Kei ngā tini mate huhua,

Haere, haere, oti atu koutou e!

E ngā tukemata nui! Kia mau tonu ki te mana āhua ake o Kahungunu,
Pupuritia! Kia ita, ita! Mau tonu! Haere ake, haere ake!

I acknowledge the Taumata who have successfully guided us through another year. I am pleased to present this report. This year has flown like Te Kaahu, soaring heights and swooping lows. The heights have included greater participation by whānau, tamariki and mokopuna particularly in *kura reo wānanga* but also in all iwi events and the lows by the sudden passing of Tuahine Northover and the lingering illness that eventually claimed Meagan Joe and other members of whānau and hapū throughout the rohe. *Ahakoā ngā piki me ngā heke, ka hiko tonu rā!* However, we have an institutional know how that can deal with huge tidal swings while maintaining the core functions of this iwi. *E kore te kumara e kōrero mō tōna ake reka*, but I must acknowledge our tari and how they have contorted and twisted to meet and complete the full dynamics of iwi expectations and activities.

The iwi strategy to support hapū with whenua claims to the Waitangi Tribunal reached a high when Ngāti Pāhauwera signed their settlement in December 2010. It re-emphasizes the vision of our leaders to ensure economic engines are pulsating at both iwi and hapū levels and not be reliant on the trickle down from iwi to hapū. *Anō te pai, anō te āhuareka o te nohotahi a ngā teina me ngā tuākana i runga i te whakaaro kotahi.* This multi-million settlement will be echoed across our rohe to varying degrees over the next 5 years and will generate both financial and cultural energies to those important cultural bastions. *Mā te huruhuru te manu ka rere!* As stated earlier iwi events have touched more corners of our people than ever before and are becoming iconic regional events with more approaches from both public and private sectors to support these. Taiwhenua and Taurahere representation is strengthening though we need to ensure more robust connection with whānau outside the rohe and motu, so that whakapapa links are maintained and enhanced.

The Kahungunu Asset Holding Company has consolidated its position and made good returns in a tenuous financial climate. I thank the departing Chairman Harry Mikaere and Director Chris O'Reilly for their diligence in steering the company on its current pathway. The *Kahungunu ki uta, Kahungunu ki tai* Strategy continues to gain momentum, while our *Tobacco Free Rohe* drive needs to be taken to another level. I acknowledge the difficult issues we are addressing including the Violence Free, P Free and Alcohol and Drug abuse campaigns and urge whānau to speak up and out. *Kaua e noho wahangū! Matika mai!*

Me tuku mihi anō ki ngā kaiwhakaohooho i te reo Māori. Ahakoā kei te hoki mai ngā rawa me ngā putea mai i ngā whakataunga kokoraho Tiriti o Waitangi, me whakapau kaha tonu tātau kia hoki mai ai tō tātau reo rangatira. Koia pū te tino wawata o ngā hākuī me ngā hākorō o te iwi nei, kia horapa anō ai te kōrerotia o te reo ki ngā rohe katoa o Ngāti Kahungunu.

Kahungunu, kia eke! Eke panuku, eke Tangaroa!
Tihei Kahungunu!

Nāhaku noa nā



Ngahiwi Tomoana

Chief Executive's Statement



Tū ana au i te tihi o Kahurānaki
Mātai whakararo te titiro ki te mānia o Heretaunga
takoto noa,
Whakarunga te titiro ko Whakapūnake,
Whakararo te titiro ko Rangitūmau,
Whakawaho te titiro ki te tāepaepatanga o te
rangi,
Ki te hunga i nunumi atu ai ki tua o te pae o maumahara,
Hoki mai ana ki a tātau te hunga ora, kia ora mai tātau katoa, Tihei
Kahungunu!

The year on reflection for the iwi office saw true camaraderie between the staff. Throughout the loss of our colleague and friend Meagan Joe, the iwi staff continued to work diligently to ensure their friend's wishes were upheld and her whānau was supported in sending Meagan off on her journey. I acknowledge and thank our staff for all the amazing things they do for and on behalf of our people.

There were also highlights over the last year, the excitement and high with representing Ngāti Kahungunu on marae paepae – Koroneihana, Māori Womens' Welfare League and the many tangihanga throughout our rohe. The Waiata Awards and the five day Takitimu Festival showcased our multi-talented people to an international audience. Kahungunu/ Waitangi Day celebrations, Matariki 2011, I attended the Wairoa and Flaxmere Matariki celebrations. Both events proved to be successful in attracting large numbers of rangatahi. Our Rugby, Haka, Hāngi events kicked off in Wairarapa to an awesome reception and ended with a try-scoring thumbs up from the communities of Dannevirke and Wairoa. The many wānanga and hui on matters important to our people like fisheries, rongoā, rangatahi, Wai 262, Kaumātua, reo, te wero and hauora continue to ensure our people are engaged and are having a say.

Rangatahi and succession has become a focus within the office this last year. In June 2010 our rangatahi made their mark at the Māori All Blacks vs England rugby game at McLean Park. This year they continue making their mark by establishing a Rangatahi Advisory Group. The purpose of this group is to coordinate and help prioritise a rangatahi strategy and initiatives from the 'wish list' developed from the first inaugural rangatahi hui held at Heretaunga Taiwhenua. Hui have since been held at Ruahāpia marae with the Advisory Group venturing to Wairoa and Wairarapa taiwhenua in October.

Laughter (and the occasional waiata) continues to resonate throughout the iwi office from staff and visitors alike. I take this as a sign that we enjoy what we do, how we do it and when we do it. Again, my sincere thanks to our staff who continually amaze me with their ability to respond rapidly when the Iwi's reputation is on the line.

I am pleased to report that we end this year with a net equity of \$56,282,207 and an operating surplus of \$2,292,436.

Tihei Kahungunu!

A handwritten signature in dark ink, appearing to read 'Meka Whaitiri'.

Meka Whaitiri

Board Members 2010-2011

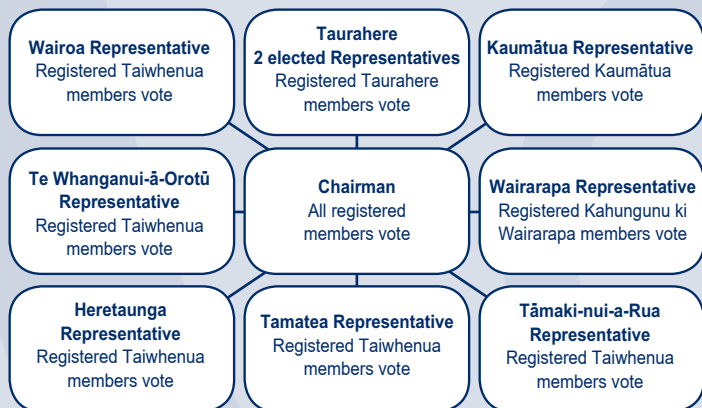
The Board

The Ngāti Kahungunu Iwi Inc Board is the elected authority for Ngāti Kahungunu (Population 55,946), and is made up of ten members elected or appointed through a process of integrity in accordance with the Ngāti Kahungunu Iwi Inc constitution. There is one elected member from each of the six Taiwhenua / rohe, one Kaumātua, two elected members representing the five Taurahere, and the Chairman.

The Board governs the business and affairs of the organisation and ensures its direction aligns to the vision and values of the iwi. Board meetings are open to the wider iwi and are held on a bi-monthly basis in several venues throughout the Kahungunu rohe to allow whānau the opportunity to attend the meetings. A summary of the minutes of these meetings are sent out through our iwi networks and posted on the iwi website after each meeting. www.kahungunu.iwi.nz

The next triennial election will take place in April 2013. If you are interested in becoming a Board member, contact our office to make enquiries about the process.

The Ngāti Kahungunu Iwi Incorporated Board Representation Flow Chart



Board Member Statements



Haami Hilton

Ka papā te whatitiri, ka hikohiko te uira,
Kia puta te ira tangata ki te whai ao ki te ao
mārama,
I te tuatahi me tuku mihi ki ngā mate kua huri kē
ki tuawhakarere,
Ki a Tuahine rātau ko Meagan ko Linette hoki,
Haere ngā mate, moe mai rā i te moengaroa.
Kei te kaha te haere o ngā kaupapa e pā ana ki tō
tātau reo me ōna tikanga katoa, me tō tātau iwi o
Ngāti Kahungunu e tiaki mai rā i ō rātau tinana kia
pakari mō ngā tamariki mokopuna.

Nō reira nui ake ngā kaupapa kua mahingia e Ngāti Kahungunu mō te tau
kua pahure ake nei.

Heoi anō kia kaha tātau o Ngāti Kahungunu mai i te motu whānui puta
noa ki te ao.

Tēnā koutou, tēnā koutou, tēnā tātau katoa.

Tihei Kahungunu !

Haami Hilton
Kaumātua



Robert Ropiha

This past year brought with it many challenges
for the whānau of Kahungunu ki Tamatea and
I acknowledge the many iwi members who have
suffered illness or experienced loss of employment
or sadly lost loved ones during this period. I believe
that as we continue to be strong in our beliefs and
in our values we can combat the challenges that
lie ahead and celebrate the accomplishments
of our people. This year will mark the third year
that the Kahungunu Māori Sports Awards will be
held in Waipukurau. A few months ago Tamatea

celebrated Matariki at the AW Parson Stadium which was a great turn
out. Recently the highly successful Rugby Haka Hāngī event was held
at Te Aute College and soon Rongomaraeroa Marae will celebrate its
100th year celebration. The Taiwhenua have held Tihei Kahungunu
Wānanga that have covered a wide range of activities including a hīkoi
whenua of Tamatea, whakapapa and kaitiakitanga. I acknowledge the
Chair of Tamatea Taiwhenua Liz Graham for her passion and articulate
leadership.

Robert Ropiha
Tamatea Taiwhenua Representative

Board Member Statements

Special Acknowledgement

We acknowledge Linette Rautahi who was a loyal and long serving Board member. Linette sadly passed away on the 29th January 2011. She represented Kahungunu ki Tāmaki-nui-a-Rua.



(The late) Linette Rautahi



Hayden Hape

This year has presented us with many challenges however we have embraced opportunities that have enhanced and strengthened our whānau. Firstly, I would like to pay tribute to Aunty Linette Rautahi who sadly passed away earlier this year. Aunty Linette was a Board member for 17 years and she was committed and passionate about Kahungunutanga.

As a Taiwhenua Board we have strived to build a healthy relationship with our people and include our people in producing activities.

We believe that this inclusive approach helps achieve our vision which is "To have a thriving community with strong and trusted leadership, building a better future for Kahungunu peoples, all Māori, all iwi, and all peoples in the Tāmaki-nui-a-Rua Rohe". Kahungunu ki Tāmaki-nui-a-Rua whānau can really say that this year we have celebrated being Kahungunu. Highlights include the Kahungunu Top Town event that drew a huge crowd of whānau that branded the Dannevirke Rugby Park with our new Taiwhenua logo; in November we took two bus loads of whānau to the iwi AGM Pā Sports at Splash Planet; we hosted our own Kahungunu Matariki event to an overflowing house and more recently we held the Rugby Haka Hangi Festival that brought the whole community together in a family fun day.

We have held Tīhei Kahungunu wānanga and Whakapapa wānanga with the help of our extended whānau from Wairarapa. These wānanga have instilled a sense of pride in the hearts and minds of those who have attended. I acknowledge the support of our kaumātua, the tireless support from our event team and supporters and all of our Kahungunu ki Tāmaki-nui-a-Rua whānau who continue to support the activities of our Board. Lastly I would like to thank the Board for their support and passion to help pave the way forward for the whānau of Kahungunu within our rohe and I look forward to next year.

As Māori, we come from a people, who travelled great distances by sea, to arrive at this place. We are reminded how Kahungunu achieved so much by, "Ko Kahungunu he tangata ahuwheua mohio ki te haere i ngā mahi o uta me te tai" and take heart of this, for the impossible becomes possible.

Hayden Hape

Kahungunu ki Tāmaki-nui-a-Rua Taiwhenua Representative

Chairperson - Kahungunu ki Tāmaki-nui-a-Rua Taiwhenua

Board Member Statements



Bill Hamilton

Te Whanganui-ā-Tara, under the leadership of Toni Huata and Clayton Reiri, has had a very busy year. Our focus has been on increasing membership, running wānanga and developing our reo plan. We ran 9 wānanga over the year and have involved a good range of our whānau living in Wellington. Our thanks to Taite Cooper who has been a great tutor. We closed down the Embassy as the cost did not warrant keeping it open, and co-located with Ngāti Kahungunu Social Services until their recent change of location.

We look forward to hosting the March meeting of the Board.

Taurahere are represented on the NKII Board by TeHuia Bill Hamilton (Te Whanganui-ā-Tara) and Owen Purcell (Kirikiriroa). Alternates Paora Ropiha (Murihiku) and Bill Rayner (Tāmaki-makau-rau) have also been active participants in NKII activities during the year. Each Taurahere has received a visit from our office to support the Tihei Kahungunu wānanga and all have the opportunity to have input into the Strategic Plan. There are a number of big projects planned for the next three years and the challenge for those of us who live outside the rohe, is to connect with our whānau who remain there and keep involved.

Bill Hamilton **Taurahere Representative**



Owen Purcell

This year has been one of celebration as we saw our leaders move from strength to strength with each new discovery and we successfully linked those concepts with our own qualities that make us unique. My involvement with the Tobacco Action Group has been an exciting one as we have witnessed more and more whānau become Tobacco Free.

Finally, I look forward to my continued contribution to our successes in Ngāti Kahungunu.

Owen Purcell **Taurahere Representative**

Board Member Statements



Nelson Rangi

Throughout the year Kahungunu ki Wairarapa has consolidated its position as a major player in Wairarapa community issues. Some of the larger milestones were:

Our environmental team has been proactive in setting protocols for water quality in our lakes, rivers and streams. We have established a Geospatial Information System (GIS) for mapping heritage sites. We are working with Genesis Energy on its proposed Castle Hill wind farm and with Greater

Wellington Regional Council on its natural resources plan review.

Culturally we took an active role in the Wairarapa Moana six month historical exhibition at Aratoi Art Gallery. We organised very successful Matariki celebrations and a series of fit whānau wānanga. Several te reo and kapa haka wānanga were held throughout the rohe.

To support the iwi fisheries plan, Wairarapa has hosted several well attended fisheries hui. Wairarapa - Tāmaki-nui-a-Rua treaty claims committee formed a trust to set its mandate strategy to progress claims with the Office of Treaty Settlements.

Nelson Rangi

Kahungunu ki Wairarapa Representative

Chairperson - Kahungunu ki Wairarapa



Rill Meihana

Ko Whakapunake te maunga

Ko Te Wairoa Hōpūpū Hōnengenenge Matangi Rau te awa

Ko Te Wairoa te Taiwhenua

Tihei Kahungunu

Wairoa has had an industrious year striving to meet the Ngāti Kahungunu mission: *To enhance the mana and well being of Ngāti Kahungunu.* Many of our board representatives are involved with Te Whare Wānanga o Awanuiārangi on behalf of their

marae and have been involved in te reo wānanga throughout the rohe. The Matariki week was again a successful event for the town with the taiwhenua holding daily rāranga classes and to end the week the taiwhenua held a most enjoyable kaumātua night with kai and card games. Our taiwhenua had more reason to celebrate the following week with Pare Rohe-Belmont, Joylene Rohe-Karauria, Edward Karauria, Sheree Cotter, and Chantz Rohe representing Wairoa in the Ngāti Kahungunu Iwi Incorporated Wiki o Te Reo Trivia Event coming a close second to Heretaunga, congratulations to you all. August saw the second Ngāti Kahungunu kaumātua hui held at the esteemed Takitimu marae, and another hui is planned for November 12th. All kaumātua are invited to attend. Finally the recent success of the Rugby Haka Hāngi to celebrate local rugby and whānau at the Tapuae grounds has completed the celebrations and achievements Wairoa is showing towards the realization of the Ngāti Kahungunu mission.

Nāhaku iti nei

Rill Meihana

Te Wairoa Representative

Chairperson - Ngāti Kahungunu Wairoa Taiwhenua Incorporated

Board Member Statements

Tēnei te mihi mahana ki a koutou ngā uri o Kahungunu.

This year has brought new opportunities to our Taiwhenua, one being the project management of a new Carpentry Trade Training Programme. During the year, one of our buildings was destroyed by fire. An insurance settlement has allowed us to finalise historical debts and pay off our mortgage. We are currently in a stable financial position.

I would like to acknowledge the work of our staff. They do a great job in maintaining the office and supporting the board. Our Taiwhenua Board is committed to extensive governance and strategic training to ensure the needs and aspirations of our whānau/marae/hapū are recognised.



Roy Pewhairangi

Roy Pewhairangi

Te Taiwhenua o Te Whanganui-ā-Orotū Representative

Chairperson - Te Taiwhenua o Te Whanganui-ā-Orotū



Mike Paku

Tēnā koutou katoa e te whānau o te iwi.

I am pleased to provide this report as the Heretaunga representative on the Ngāti Kahungunu Iwi Incorporated Board and also the Chairman of Te Taiwhenua o Heretaunga. The kaupapa of Te Taiwhenua o Heretaunga is 'Mauri ora ki te mana Māori o Heretaunga' which is 'To uplift the well-being of Heretaunga Māori'. This is achieved through the application of our four objectives: effective leadership; whānau well-being; upholding the Treaty of Waitangi and; achieving the objectives within the Trusts charitable purpose. I am pleased to report that Te Taiwhenua o Heretaunga continues to grow from strength to strength, fulfilling our kaupapa through the guidance of Te Haaro Governance Board; the leadership of a dynamic management team and the professional delivery of a comprehensive range of Whānau Ora services provided by our dedicated staff to our whānau across all ages and stages of life. We have been privileged to work in a variety of ways with our tamariki, rangatahi and kaumātua. One particular highlight this year has been the development of kaumātua support housing, which will roll out over the coming year.

I acknowledge all whānau for their tireless efforts, continued dedication and the energy that is put into keeping the home fires burning within our whānau/hapū at our marae. I particularly pay tribute to those whānau/hapū that have been hard hit this past year with tragedies beyond our control. The efforts of our people do not go unnoticed; therefore I pay tribute to whānau who have contributed to uplifting the well-being of Heretaunga Māori - 'Mauri ora ki te mana Māori o Heretaunga'.

I look forward to a new year of opportunities and wish all whānau well in their future endeavours.

Mike Paku

Te Taiwhenua o Heretaunga Representative

Chairperson - Te Taiwhenua o Heretaunga

Staff Members 2010-2011

The operational structure for the tari was designed to allow an integrated approach to all activities within the office. Specific units exist in the structure to implement the current iwi strategies. The senior management team meets regularly to align their strategic outputs directly with the annual plan and the overall strategic vision of the iwi.



Meka Whaitiri
Chief Executive



Dr Adele Whyte
Director of
Fisheries



Jeremy Tātere MacLeod
Director of Te Reo,
Tikanga and Mātauranga



Jenny Smith
Kaitoko Whānau



Connie Collins
Kaitoko Whānau



Ngaio Tiuka
Fisheries Analyst



Alex-Ann Edwards
Te Reo Research Analyst

Support Services



Kerrin Fair
Database
Administrator



**Danielle
Keil-Lambert**
Executive
Assitant



Te Rangi Huata
Events &
Promotions
Manager



Hine Hape
Finance Officer



Naomi Wilson
Receptionist



Ruth Wong
Communications
Advisor

Special Acknowledgement

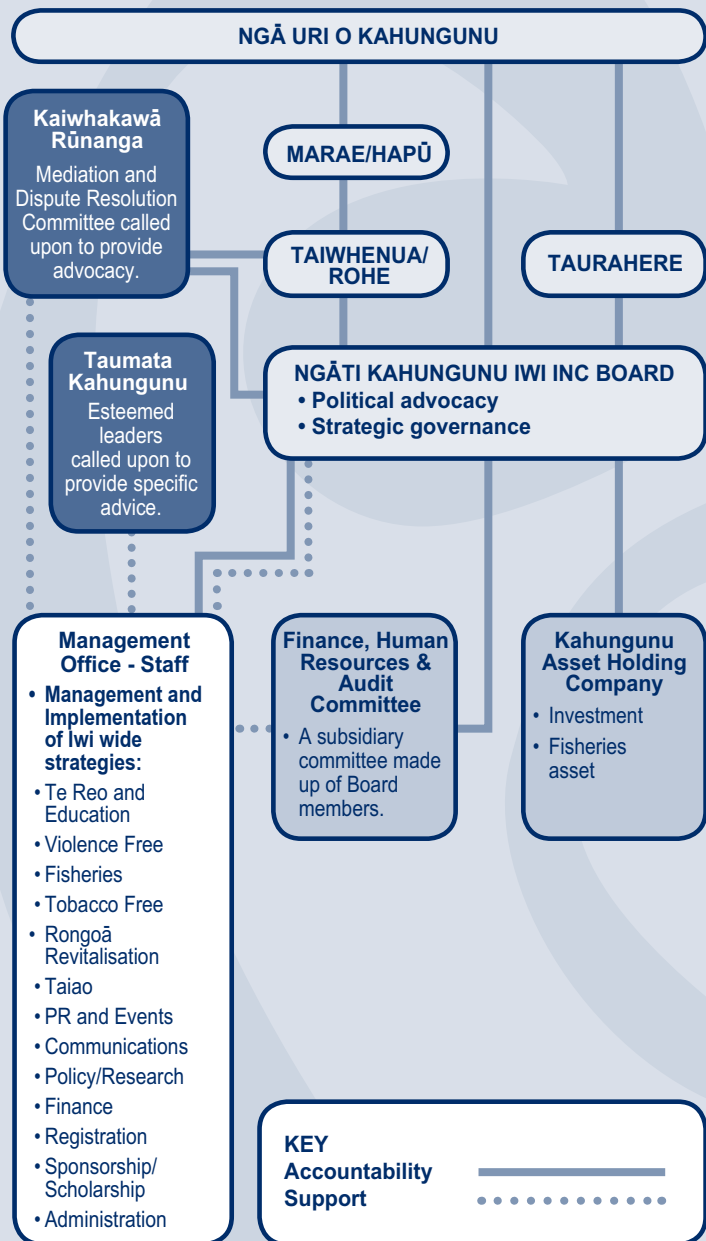
We pay special acknowledgement to Meagan Joe who sadly passed away in July this year. Meagan was seconded by the Ministry of Education to Ngāti Kahungunu Iwi Incorporated to develop and manage the Ngāti Kahungunu Cultural Standards (KCS) project. The aim of the project is to strengthen the relationship between main stream schools and local hapū to ensure local hapū knowledge is embedded in school curriculums. Meagan worked tirelessly toward the aims and goals of this project right up to the time of her passing. She is greatly missed.



**(The late)
Meagan Joe**
Poutiri-A-Mātauranga

Ngāti Kahungunu Iwi Incorporated Organisation Structure

Ngāti Kahungunu Iwi Incorporated is governed by ngā uri o Kahungunu members who have the opportunity to participate through marae, taiwhenua/rohe and iwi elections. This diagram depicts the structure of the iwi from marae/hapū to governance level.



He Mahere Rautaki Hai Haumanu I Te Reo O Ngāti Kahungunu The Revitalisation of Te Reo o Ngāti Kahungunu

Ka tau te pōkēao ki runga i ngā parikārangaranga o Ngāti Kahungunu!
E tohu ana i te hinganga o ngā tōtara whakahae kua mene ki te pō
hākiwakiwa,
Tērā te whetū te kōramuramu mai rā,
Ka ngaro koutou i tēnei ao, auē, taukiri e!

Ka tangi rā a ngākau i te rirohanga atu o te wahine
o te mānawanawa, a Meagan Joe, nō te 27 o ngā
rā o Hōngongoi i riro atu ai ki Hokinga-kore-ki-muri.
Kāore i ārikarika te pā mai o mamae, o rāwakiwaki, o
matapōrehu, o roimata i heke, o hupe i whiua. Ka kī noa
ake, mā muri nei ō tapuwae e takahi, me kore noa e
paku eke i a mātau tāu i ōhāki mai ai, kia eke ai ā tātau
tamariki Māori ki te taioreoretanga o te mātauranga,
ahakoa ko wai, ahakoa nō hea! E kore e mutu ngā mihi ki a koe mōu i
whakapau i te katoa o tō kaha ki te hāpai i ēnei kaupapa mātauranga, ā,
waiho mā te *Kahungunu Cultural Standards* e ora tonu ai koe ki roto i te
whatumanawa o te hunga kua mahue ki muri. Ko te pō rā ki a koe, ko te
pō rā ki a koe.



Tuahine Northover

Ka mihi kau ana hoki ki te mātanga o te ao Māori me ōna
nekeneke katoa, ki a Tuahine Northover nō te marama o
Paenga-whāwhā i tauhōkaitia ki Aitūrangi-mamao, ki te
whaiwhai ariki, ki te huinga o te kahurangi. Uiui noa ana,
rapurapu kau ana, kua kore rā tō momo, e koro. Me kore
ake te hunga pēnā i a koe nā i eke ai te mana o tō tātau iwi
o Ngāti Kahungunu, kia ui noa ake rā: *he mana teretere,*
he mana tū tonu rānei? Moe mai rā i te aunga o te moe, i
te moe tē whakaarahia moe mai rā, moe mai rā.

Hoki mai ana ki a tātau te tirohanga kanohi, kia ora mai tātau katoa, Tihei
Kahungunu!

Kahungunu, kia eke! – Koia rā te whakaaro e whāia nei e mātau i tēnei tau,
ā, e hāngai pū ana ngā kaupapa katoa ki tā tēnei kōrero e whakatenatena
mai rā. Ko te reo Māori te mātāmua o ngā kaupapa katoa, ā, ko te tikanga
te kaitautoko o muri i a ia, waihoki ka haere ngātahi ana - te reo me ōna
tikanga, tē taea te whakawehea, ahakoa pēhea!

O roto i te huhua o ngā hui, ko te whakahuihui i ngā kaumātua o Ngāti
Kahungunu tētahi kaupapa whakahirahira kua puea ake i tēnei tau. Mokori
anō kia mihia ō tātau pūkōrero, o tātau manu karanga anō hoki e tiaki mai
nā i te mauri o ō tātau paepae tapu huri noa i te rohe whānui o Ngāti
Kahungunu. Ko te mate kē ia, ka mate ana tēnei reanga, mā wai rā e whai
a muri atu? Me tīmata tātau ināiane ki te kimi rangatahi hei whakakīkī
haere i ngā whāruarua o runga i ō tātau marae, tē uia: *mā wai te marae*
e taurima?

E ora ai tō tātau reo, me kōrero! Kāore e tua atu i tērā! Whakatauiratia e
tātau mā kia kite mai ai te iwi he mana tō te reo Māori, he mauri tōna, he
wairua tōna, he tapu tōna. Mā te whakatauiria pea e ngākau reka mai ai

Culturally Strong

te hunga kāore anō kia aro ki tō tātau reo rangatira, kia kore ai e kiia e ā tātau mokopuna: *I ahatia e koutou taku taonga?*

Nō tēnei tau nei i utua e Ngāti Kahungunu tētahi whā tekau tāngata kia haere atu ki te Kura Reo a Te Taura Whiri i Te Reo Māori. Nā konei i kitea te wairua pukā o ā tātau taiohi e pīkoko nei ki tō rātau reo Māori, e mau ai anō hoki tā Te Kōhanga Reo i kī rā: *Te reo kia tika! Te reo kia rere! Te reo kia Māori!* He nui ngā kaupapa kei mua i ngā tau e tū mai nei kia kounga ai te reo Māori, otirā te reo o Ngāti Kahungunu.

I whakarewaina hoki a Kahungunu Matangi Rau, te mōheni hou a Ngāti Kahungunu hai tō mai i ngā whakaaro me ngā pitopito kōrero a tēnā, a tēnā, he huarahi tēnei hai whakakōrero i te tangata, ā, he ara anō hoki hai mau i ngā rongo, ngā nawe, ngā wawata me ngā tūmanako o te iwi ki te motu, ki te ao whānui, huri noa. Mā te pānui, mā te tuhituhi, mā te kaha karawhiu anō hoki i a ia, e ora tonu ai tēnei reo o tāua.

He rahi hoki ngā wānanga Tihei Kahungunu kua whakahaeretia i te tau kua hipa ake nei, ā, he mea whakatū ki ngā rohe taiwhenua katoa, tae rawa atu ki ngā taurahere anō hoki. He tohu rā tēnei kei te matekai rawa atu tō tātau iwi ki ā tātau waiata tawhito, ā tātau pūrākau, ō tātau whakapapa, ā tātau kōrero hītori, otirā tō tātau Kahungunutanga!

Kua whakapau kaha te tari o Ngāti Kahungunu Iwi Inc. i tēnei tau ki te whakatauiria ka tahi, ka rua ki te whakakaurera ake i ngā tikanga, i te reo, i ngā mōteatea; me kore noa e paku eke i a mātau tā te Whātuiapiti i kī ai: *kanohi ki te kanohi, pokohiwi ki te pokohiwi*. Ko te haere a Ngāti Kahungunu ki te Koroneihana tētahi tohu nui o te rangitāmirotanga kei waenganui i te iwi, mā te pēnei e kotahi ai te waka, e kotahi ai te whakaaro, e kotahi ai ngā mahi, e eke ai te mana o Ngāti Kahungunu.

Hai whakatepe i tēnei wāhanga, ka hoki rā ki tā Te Amorangi Wī Te Tau Huata i waiho mai ai ki a tātau: *Kia tapatahi, kia kotahi rā! Tātau tātau e!*

Tihei Kahungunu!



'Image provided by Hawke's Bay Today'



Healthy, Sustainable Environment

Protecting our Environment Te Taiao and Resource Management

The broad objective for Te Taiao O Ngāti Kahungunu over the 2010-2011 year has been to strengthen our advocacy role for the collective environmental interests of Ngāti Kahungunu Iwi. The iwi has also continued to support our hapū through providing resources and assistance with district and regional planning matters, and we regularly utilise our networks to keep whānau up-to-date and informed about emerging environmental issues.

With the ratification of the Resource Management Simplifying and Streamlining Act in 2010, a number of key changes within statutory resource management structures have been triggered, both regionally and nationally. National Policy Statements and National Environmental Standards are now being used more frequently to express the national interest in different elements of the environment. Local planning documents will gradually be amended over the next few years to give effect to the new national policy statements which cover issues like freshwater management, renewable energy generation, electricity transmission, infrastructure and indigenous biodiversity. During the transition into Treaty settlements for our hapū, it is important to continue to promote our values and aspirations across the broad spectrum of environmental regulation so that Ngāti Kahungunu interests do not get displaced by perceived national priorities.

The RMA reforms saw the government attempting to speed up statutory processes which could potentially restrict input from affected parties including Māori, while providing an easier pathway for resource exploitation and development. Ngāti Kahungunu will need to remain vigilant to ensure that our aspirations for the environment are not undermined through lack of participation in environmental decision-making.

Representation on fora with government ministries and agencies has enabled Ngāti Kahungunu interests to be taken into account during changes in environmental legislation. We have also strengthened our relationships with the Environmental Protection Authority, MAF Biosecurity, the Department of Conservation, and entered into new relationships with Genesis Energy, Mighty River Power and TrustPower.

Water storage on some of our major rivers is being vigorously investigated by several regional councils throughout the Kahungunu rohe. This will be a significant issue for us in the future as it may lead to partial control of our rivers being handed over to water or irrigation companies. The resultant effects of further irrigation and land-use intensification is yet to be fully appraised. Going forward, we will be facilitating the involvement of our hapū in cultural health monitoring of several of our rivers so that the results can be used to inform new water policy development and statutory plan changes, while elevating and strengthening kaitiakitanga.

Healthy, Sustainable Environment

Kahungunu Ki Uta, Kahungunu Ki Tai: Marine and Freshwater Fisheries Strategic Plan

The Iwi Fisheries Management Unit (IMFU) was established in April 2010 to implement the KKUKKT strategic plan. This is the first year we are able to include a full-year report for Fisheries activities.

Highlights for the 2010-2011 year include the inaugural '**Kahungunu Fish Hook Summit**' which was held on the 10th of March this year. This event created a rare opportunity for hapū o Ngāti Kahungunu to connect and communicate, celebrate what's been achieved and explore opportunities and ideas for future aspirations. It was a very positive event for our people and was the culmination of a year of hard work with hapū, over a series of wānanga, to assist in the development of their hapū rohe moana plans.

Another exciting highlight for the year and a historical moment in Kahungunu history has been the development of '**Te Whata a Kahungunu**' (formerly known as Pātaka). We have used legislation to enact our customary right to store fish for future use. This has modified the way whānau and hapū can access fish for use during tangi. This is work in progress as we are still developing a process that will suit whānau needs.

One of the many 'projects' that the IMFU has been working on over the past year has been using '**Turned Mesh Nets**' to release juvenile and undersized fish. Initial results are very encouraging and if the results are taken up, then this project will have a large impact on the sustainability of our fisheries, by revolutionising the way we commercially fish in New Zealand. We plan to use the results of this trial as the basis to apply for further research funding for future related projects.

Communication and relationship building is important to us. The past year has seen a rapid growth in the IMFU networks, both locally, within the Kahungunu rohe, Aotearoa and Te Ao. These networks are fundamental to the success of the IMFU in our current year and as we build towards the future. We have participated in, and developed a range of new and innovative ways to communicate our messages to a range of different stakeholders. The release of our '**Fisheries Newsletter – Hurumanu**' has been a great success.

Our focus for our first year of operation has been on building relationships within Kahungunu with our own people first. As we look forward to the 2011/2012 year we shift into building stronger relationships with all stakeholders within the community to ensure the KKUKKT message of sustainability spreads.



KAHUNGUNU KI UTA
KAHUNGUNU KI TAI
PROTECTING OUR ENVIRONMENT

Strong, Vibrant, Healthy Whānau

Te Ara Toiora O Ngāti Kahungunu Wellbeing Strategy

Ngāti Kahungunu Iwi Inc is one of the few iwi organizations contracted by Te Puni Kokiri to run the Kaitoko Whānau advocacy programme designed to ensuring our whānau get the right support from government agencies. This has been a success for the iwi as the tari has simultaneously continued with the implementation of the Ngāti Kahungunu Wellbeing Strategy that encompasses the Violence Free Strategy; the Tobacco Free Strategy and the Rongoā Revitalisation Strategy.

A major highlight for the year has been the implementation of the Tobacco Free Strategy as letters were published and sent to editors of major newspapers throughout the country requesting shop owners stop the sale of tobacco. Certificates of acknowledgment were provided to shop owners who took up the challenge and stopped selling tobacco. Ngāti Kahungunu Iwi walked the talk on the 6th February when we held our first Kahungunu Waitangi Day Tobacco Free event. Rangatahi led the way by informing event goers of the iwi's new initiative and people were kindly asked to leave their tobacco in their vehicles. A rangatahi Tobacco Free Summit was held in Hastings and video linked to rangatahi in Wairarapa. The outcome of the wānanga was loud and clear. Rangatahi want to do the following: Establish Kahungunu Ambassadors with Rangatahi Champions for iwi health and wellbeing and provide support packs for Rangatahi who wish to manaaki their whānau and friends to stop smoking.

Ngāti Kahungunu Iwi has taken on a more active role in supporting the use and knowledge of rongoā. We recognize that whānau are facing a health crisis and there is a great need to revitalize the use of rongoā in Kahungunu. Going forward, hui are being held at rohe within Kahungunu to allow iwi members the opportunity to engage and contribute to the progression of the rongoā revitalisation programme.

Another exciting highlight is the development of a resource kit or a Rangatahi Safecard that will be made available to whānau to provide instant access to support for those feeling at risk. Watch this space!

The wellbeing strategy continues to drive all of the mahi done in the Ngāti Kahungunu Iwi Inc tari. During the year four staff members quit smoking, one of whom is now a trained smoking cessation facilitator. The office participates in the Workfit Lifestyles Programme which educates and encourages healthy lifestyles and enhanced wellbeing.

There are weekly te reo and waiata sessions and much laughter which also contributes to the wellness within the office.

Whānau wellbeing in action!



Benefits to Members

Communications

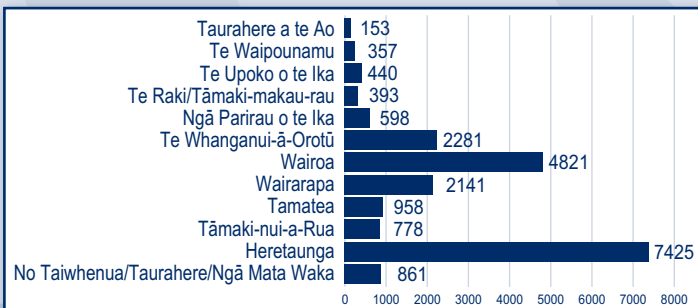
Ngāti Kahungunu Iwi Incorporated is committed to communicating with its membership and the wider community to allow whānau the best opportunities to keep abreast of events and activities that enhance the mana and wellbeing of whānau, hapū and iwi. To achieve this the iwi offers communication through the following mediums: Bi-monthly Hoaera newsletter, 'Pānui ki te iwi' an email pānui service, daily community notices via Radio Kahungunu, Board meeting summary notes posted on our iwi website soon after each meeting, media releases highlighting the iwi's status in dealing with specific issues, a toll free calling number that is accessible to whānau living outside the Hawke's Bay region, advertising through local, regional and national newspapers, timeless videos of events and special activities held in the past, and a website that maintains all communication archives including media releases, board summaries and the Hoaera newsletter. These can be viewed from anywhere in the world, on the iwi website www.kahungunu.iwi.nz. A new initiative in 2010-2011 has been the publishing of a Ngāti Kahungunu calendar of events which was sent to all registered member households at the beginning of the Māori New Year. Another exciting update is the creation of an iwi facebook page. Whānau all over the world are linking in through this social network and wanting to register with the iwi.

Registrations

A steady flow of registrations are received at the iwi office on a daily basis. More members are registering to be eligible to receive benefits as tangata whenua members. The Registration database also enables the organisation to identify and access those registered people with specific skills that could contribute to the iwi vision. One identified area of concern is the increasing number of incorrect addresses. Although members are encouraged to keep the iwi informed when contact details change, this is an ongoing concern. The iwi continues to network with organizations such as NZ Post, Tūhono and the Electoral Enrolment Centre to update addresses where we can. The Ngāti Kahungunu Iwi Facebook page is already proving a hit with updates which is very exciting.

Ngāti Kahungunu Iwi Incorporated currently has 21,203 registered members. 738 members registered during this financial year between 1 July 2010 and 30 June 2011. The bar graph below indicates total members by area and the pie graph shows the increase of new members by area.

Total Members by area



Benefits to Members

New Members by area

1st July 2010 - 30th June 2011

Ngā mātā waka 7

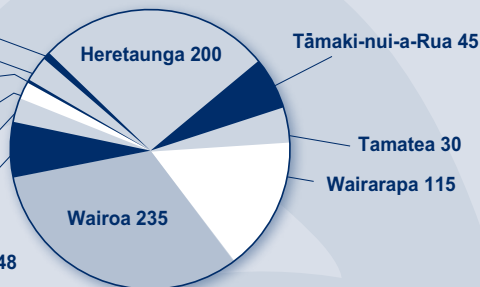
Te Upoko o te Ika 21

Te Raki/
Tāmaki-makau-rau 3

Te Waipounamu 14

Ngā Parirau
o te Ika 20

Te Whanganui-ā-Orotū 48



Events

Ngāti Kahungunu Iwi Inc continues to plan, organise, promote and lead major events that strengthen the mana of Ngāti Kahungunu. Over the past year one of the main objectives for event management, has been to grow event leaders at Taiwhenua level.

The Wairoa Lighthouse Festival held in November last year, built on the success of the previous year. The Kahungunu Pakeke Golf Tournament held at Mahia during the busy Christmas season was ably managed by Eileen Himona from Lake Waikaremoana. Many senior golfers felt the tournament was one of the highlights on their golfing calendar.

The 2010 Kahungunu Sport Awards held at the AW Parson stadium in Central Hawke's Bay was a sold out affair which saw Ken Fergusson (Champion Shearer) crowned Kahungunu Sportsperson of the year.

The 2010 Ngāti Kahungunu AGM Pā Sports held in the warm month of November saw 1550 sport participants. 44 Volleyball teams, 32 Netball teams, 16 Touch teams, 20 Kiddies Sports teams, 28 Marae Tug of War teams and 12 Euchre teams...all ferociously competing to win. Over 100 people attended the actual AGM. 2000 + extra whānau took advantage of the discount coupon entry into Splash Planet to enjoy the wonderful Kahungunu whānau atmosphere for the day. The iwi funded 5 buses filled with Kahungunu whānau from Wairarapa, Tāmaki-nui-a-Rua and Wairoa. It was a wonderful day for everyone.

The Fiesta of Lights event held at the Hawke's Bay Showgrounds ran over the Christmas period. The new drive through format was well received.

The Kahungunu Waitangi Day events ran over two days, at the new Hawke's Bay Sports Park. The Park offers exciting opportunities to grow the event in the future.

Matariki events took place in five areas this year. Kahungunu ki Tāmaki-nui-a-Rua Taiwhenua led the Kahungunu Matariki events by celebrating Matariki over a week long period, creating learning opportunities for local schools. Tamatea Taiwhenua followed with a massive display of fireworks. Heretaunga Taiwhenua and Te Whanganui-ā-Orotū joined forces and endured heavy showers of rain at their outdoor Flaxmere Park event, nevertheless the event was still well attended. Wairoa and Wairarapa events were also well attended by their communities.

Benefits to Members

Sponsorship

Cultural and sporting pursuits are an important aspect of personal, whānau, hapū and iwi development. Each year a number of Ngāti Kahungunu whānau members are selected to compete in national and international sporting competitions. This year Ngāti Kahungunu Iwi Inc sponsored the following individuals and groups.

Individual or Group	Event or Tournament
Honorio Ropiha	2010 Body Shaping National Competitions
Joanne Rosandich	USARF Conference
Maurice Manuel-Belz	2010 World Petanque Champs in Turkey
Patrick O'Brien	Students against Drunk Driving Battle for life
Rahina Marie Huata	Ihaka National Speech Competition
Zack Makoare	New Zealand Kiorahi team - Europe
NWH Music - Ngatai Huata	Waiata Māori Music Awards Display
Liveit Enterprises Ltd	Te Matau A Maui Training - 25 iwi members
Les Hokianga	Health Hikoī to Wellington
Dean Antipas	International Basketball Exhibition Shanghai
Tridan Jade Russell-Mcclutchie	2010 National Softball Tournament
Te Matau A Maui Touch	2010 Māori Touch Nationals
Mathew Bird	2010 NZ U16 Basketball Koru - Australia
Hukarere on behalf of Rita Hokianga	2010 NZ White Socks Tour to Australia
Aaron Kuru	2010 NZ blacksocks Softball - Australia Tests
Te Whanganui-ā-Orotū Taiwhenua	Te Whanganui-ā-Orotū Kaumātua Christmas Dinner
Te Timatanga A ArarauTrust	Iron Māori Event
Waiohiki Community Charitable Trust	Māori Motown Event
Wi-Richard Tohiariki	NZ Mens Masters Touch Tournament
Cody Tamati	NZ U15 Softball Tournament
Tutonga Waaka-Kawana	NZ U17 Softball Tournament
Callum Lewis-Carson	Softball Spirit showdown tournament
Raehana Tangitutu	Compete in NABBA Body Building
Jacob Raureti Mita	NZ U17 Softball Tournament
Sally Wainohu	International Open Womens Touch Tournament - Rarotonga
Tiwana Aranui	NZ U17 Softball Tournament
HB Secondary Schools Kapahaka organising committee	HB Secondary Schools Kapahaka Festival
Geoffery Ahipene and Ashleigh Ahipene	2011 NZ Muay Thai - Darwin Australia National ARAFURA Games
Thomas Heather	NZ U14 Inline International Hockey Tournament Queensland Australia
Horowai Puketapu	NZ Junior Softball - International Youth Cup Tournament
Porangahau Community Trust	Porangahau Community Kaumātua Church Ball
Daniel Gemmell	Under 15 Mixed Touch International Tournament
Candis Cardie	NZ Open Womens Touch Tournament at the 2011 Open World Cup in Scotland
Waiata Māori Awards Charitable Trust	Māori Waiata Music Magazine
Ayvran Mackie	International Future Problem Solving
Kahungunu Māori Golf	Pakeke Golf Tournament
Te Wānanga Whare Tapere o Takitimu	Takitimu Festival
Waiata Māori Awards Charitable Trust	Waiata Māori Music Awards

Benefits to Members

Scholarships

Ngāti Kahungunu Iwi Incorporated continues to distribute benefits to its members to encourage and recognise the pursuit of academic knowledge and qualifications of Ngāti Kahungunu taura. During the 2010-2011 financial period thirty (30) taura studying in their third or final year of their degree or post graduate studies received \$500.00 each. Three (3) \$5000.00 scholarships were awarded to postgraduate taura undertaking research in areas that link directly to the Kahungunu 2026 vision. A list of successful taura follows:

Name	Taiwhenua/ Taurahere	Institute (Qualification Sought)
Virginia Barlow	Wairoa	Victoria University (Masters of Architecture Professional)
Patricia Beach	Heretaunga	Te Wānanga o Raukawa (Poutuarongo Whakaakoranga)
Steve Bethell	Tamatea	Eastern Institute of Technology (Bachelor of Arts Māori)
Aroha Joyce Blakeborough	Wairoa	Victoria University (Bachelor of Arts / Bachelor of Teaching Primary and Secondary)
John - James Carberry	Wairarapa	Massey University Palmerston North (Bachelor of Arts Degree, Psychology / Māori Studies)
Cassi May Crayford	Wairoa	Auckland University (Bachelor of Communications Studies)
Tania Gilchrist	Heretaunga	Auckland University (B.A (Honours) Doctorate Clinical Psychology)
Asti Jamin Lee Grard	Wairarapa	Auckland University (Bachelor of Medicine and Surgery)
Patricia Grogan	Tamatea	Auckland University (Bachelor of Sport & Recreation Conjoint with Bachelor of Business Degree)
Jade Hadfield	Te Whanganui-ā-Orotū	University of Melbourne (Masters)
Chloe Harvey	Wairoa	Manukau Institute of Technology (Bachelor of Applied Communications)
Moana Hutana	Heretaunga	South Pacific college of Natural Therapies (Bachelor of Natural Medicine)
Malia Noelani Lardelli	Wairoa	Masters of Midwifery by thesis (Graduate School of Nursing, Midwifery and Health)
Christina Marshall	Wairoa	Massey University (Postgraduate Diploma in Science)
William McNabb	Wairoa	Massey (Graduate Diploma Teaching Secondary)
Charlotte Mildon	Heretaunga	Te Wānanga o Awanuiarangi (Masters of Māori Studies)

Benefits to Members

Name	Taiwhenua/ Taurahere	Institute (Qualification Sought)
Mathew Mullany	Te Whanganui-ā-Orotū	Victoria University (Masters in Arts and NZ Studies)
Zeb Tamihana Nicklin	Wairoa	Te Wānanga o Raukawa (Tahuu Whakaakorangi)
Pohatu Paku	Heretaunga	Massey University (Post Grad Diploma Arts -Māori)
Pani Paora - Chamberlin	Tamatea	University of Waikato (Masters of Laws)
William Pere	Heretaunga	Auckland University (Bachelor of Health Sciences)
Kataraina Rowe	Te Whanganui-ā-Orotū	Eastern Institute of Technology (Bachelor of Arts Māori)
Paula Savae	Heretaunga	Te Whare Wānanga o Te Awanuiārangi (Bachelor Mātauranga Māori)
Riria Smith	Wairoa	Te Whare Wānanga o Te Awanuiārangi (Bachelor of Arts Mātauranga Māori Programme)
Joseph Taurua Terrill	Wairoa	Te Wānanga o Raukawa (Masters Te Reo Māori)
Whare Moana Timu	Heretaunga	Unitec Institute of Technology - Auckland (Masters of Design)
Joe-Anne Walters	Heretaunga	Eastern Institute of Technology (Bachelor of Arts, Māori)
Meri Louise Wichman - Robin	Heretaunga	Tomairangi Te Wānanga o Aotearoa (Degree in Māori Art - Contemporary)
Mei Vina Winitana	Te Whanganui-ā-Orotū	Te Whare Wānanga o Te Awanuiārangi (PHD in Indigenous Studies)
Margaret Young	Te Whanganui-ā-Orotū	Te Whare Takiura o Kahungunu (Bachelor of Arts Māori)

Successful Research Scholarship Recipients

Romaine Ferris	Heretaunga	Te Wānanga o Raukawa (Masters of Mātauranga Māori)
Riki Mihaere	Heretaunga	Victoria University (Doctor of Philosophy - Criminology)
Henare Waihape	Wairoa	The University Waikato (Masters of Laws)

Kahungunu Asset Holding Company Ltd Chairman's Report

For the year 2010 - 2011

Tihei Mauriora

He honore he korōria he maungārongo ki te whenua
He whakaaro pai ki ngā tāngata katoa.
Ka mihi rā ki ō tātou mate e hinga mai rā, e hinga atu rā.
Haere koutou ngā mate haere, haere
Moe mai koutou i roto i te Ariki
Ka āpiti hono tātai hono
Rātau te hunga mate ki a rātau
Ka āpiti hono tātai hono tātou te hunga ora ki a tātou
Tēnā tatou katoa



It is my pleasure to provide a brief report of Kahungunu Asset Holding Company Limited results for the year ended 30 of June 2011. A full annual report is provided to the Board of Ngāti Kahungunu Iwi Incorporated at the company's AGM.

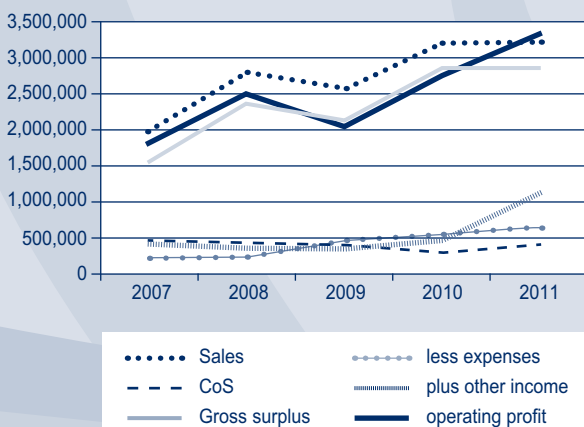
Kahungunu Asset Holding Company Limited was established in 2005 by Ngāti Kahungunu iwi Incorporated (NKII) to receive and manage the Treaty of Waitangi Fisheries settlement on behalf of Ngāti Kahungunu.

The key assets owned by KAHC include fishing quota, shares in Aotearoa Fisheries Limited (who in turn own 50% of Sealord and a range of other seafood interests), shares in Napier Mussels Limited, shares in Fiordland Lobster Company Limited and cash.

The company has the following objectives:

- To build intergenerational wealth for Ngāti Kahungunu
- To maximise the financial return on the assets
- To build a sustainable capital base for the future.

The operating profit of the company has steadily improved each year as shown in the graph below. This year 2011 the profit was \$3,409,582 compared to \$2,733,836 the previous year.



I am also pleased to report an increased equity position of \$ 53,992,485 for the year ended 30 June 2011 compared to \$52,222,903 for the 2010 year. This increase in equity is posted after payment of the \$1,640,000 dividend to the shareholder, Ngāti Kahungunu Iwi Incorporated.

During the year the company negotiated settlement of the Commercial Aquaculture Settlement for 'pre-commencement space' on behalf of Ngāti Kahungunu Iwi Incorporated and this settlement should be effected in the 2011-2012 year.

There have been changes made to the Company's Board of Directors during the year. Taine Randell, Eboni Waitere and I were appointed to the Board in November 2010. Te Horipo Karaitiana and Rawinia Kamau were appointed in August 2011.

Christine Teariki retired in November 2010. Harry Mikaere, the previous chairman and Chris O'Reilly retired in August 2011 having completed two 3 year terms. I take this opportunity to acknowledge the foundation work of the outgoing directors, along with Peter Brierley who remains a director, and thank them on behalf of the company for their valuable contribution to Ngāti Kahungunu. The current Board of Directors look forward to serving our iwi in this important role and building on the work of those who precede us.

Kaati mō tēnei rīpoata
Tēnei te mihi ki a koutou e pae nei
Tēnā koutou katoa



Rangī Manuel
Chairman



Ngāti Kahungunu Iwi Incorporated acknowledges the long term service of the outgoing Directors, Harry Mikaere, Chris O'Reilly and Christine Teariki.

Statement of Financial Performance

FOR THE YEAR ENDED 30 JUNE 2011

INCOME		Consolidated*		Parent*	
		2011 \$	2010 \$	2011 \$	2010 \$
Administration and					
Other Operating		691,776	466,543	362,088	214,548
Emissions Trading					
Scheme Allocation		150,550	-	-	-
Hi Ika income		3,440,443	3,236,930	13,538	88,900
Mātauranga		173,330	313,873	173,330	313,873
Hauora		249,841	114,500	249,841	114,500
Mauri Ora		78,304	62,617	78,304	62,617
Taiao		-	61,914	-	61,914
Merchandising		5,676	9,294	5,676	9,294
Governance		620,192	124,068	1,640,000	1,403,478
Total Operating Income	2	5,410,111	4,389,739	2,522,776	2,269,124
LESS EXPENDITURE					
Administration and					
Other Operating		771,785	1,012,997	598,142	870,912
Hi Ika		931,361	668,559	223,143	79,354
Communication		110,413	48,028	110,413	48,028
Mātauranga		210,770	271,466	210,770	271,466
Hauora		244,888	52,180	244,888	52,180
Mauri Ora		282,008	260,788	282,008	260,788
Taiao		24,610	22,324	24,610	22,324
Project		-	24,286	-	24,286
Merchandising		-	5,441	-	5,441
Governance		541,842	481,820	398,419	369,764
Total Expenses	3	3,117,675	2,847,888	2,092,392	2,004,542
Net Surplus/(Deficit) for year		2,292,436	1,541,850	430,384	264,582

* Consolidated means group (refer to note 1 on page 26). Parent means Ngāti Kahungunu Iwi Incorporated.

Statement of Movements In Equity

FOR THE YEAR ENDED 30 JUNE 2011

Opening Equity as at 1 July		54,229,190	37,169,136	4,262,854	3,998,272
Net Surplus/Deficit for the year		2,292,436	1,541,850	430,384	264,582
Total recognised revenues & expenses		2,292,436	1,541,850	430,384	264,582
Contributions from/ Distributions to owners					
Fishing Asset Settlement	4		15,518,204		-
Less: Taiwhenua/ Taurahere distribution	5	(239,420)	-	(239,420)	-
		(239,420)	15,518,204	(239,420)	-
Closing Equity as at 30 June	6	56,282,207	54,229,190	4,453,818	4,262,854

These financial statements must be read in conjunction with the accompanying notes.

Statement of Financial Position

AS AT 30 JUNE 2011

		Consolidated		Parent	
		2011	2010	2011	2010
		\$	\$	\$	\$
ASSETS					
NON CURRENT ASSETS					
Motor vehicles & plant	7	192,895	210,137	161,004	207,437
Intangibles	8	26,880,921	26,730,371	-	-
Investments & advances	9	21,347,070	20,847,070	2,218,485	2,218,485
Total Non Current Assets		48,420,886	47,787,578	2,379,489	2,425,922
CURRENT ASSETS					
Bank and cash	10	12,484,468	10,884,345	5,266,583	4,952,575
Debtors and Prepayments		122,188	40,340	73,463	66,452
Accrued income		382,720	571,002	70,749	118,914
Stock on hand	11	150	460	150	460
Settlement quota receivable	12	-	-	1,617,057	1,617,057
Total Current Assets		12,989,526	11,496,147	7,028,003	6,755,458
TOTAL ASSETS		61,410,412	59,283,725	9,407,492	9,181,380
LIABILITIES					
NON CURRENT LIABILITIES					
Vehicle leases beyond 1 year	13	-	44,350	-	44,350
Total Non Current liabilities		-	44,350	-	44,350
CURRENT LIABILITIES					
Creditors		412,856	375,038	250,514	239,029
Vehicle lease within 1 year	13	44,350	44,350	44,350	44,350
Taiwhenua/Taurahere grants payable	5	45,429	45,429	45,429	45,429
Income in advance		186,000	269,868	186,000	269,868
Provisions	14	4,439,571	4,275,500	4,427,381	4,275,501
Total Current liabilities		5,128,206	5,010,185	4,953,674	4,874,176
TOTAL LIABILITIES		5,128,206	5,054,535	4,953,674	4,918,526
EQUITY					
Retained earnings		8,123,502	6,361,468	3,103,818	3,053,287
Reserve fund		1,350,000	1,209,567	1,350,000	1,209,567
Fisheries settlement assets reserve		46,658,155	46,658,155	-	-
Emissions trading scheme reserve		150,550	-	-	-
TOTAL EQUITY	6	56,282,207	54,229,190	4,453,818	4,262,854
TOTAL LIABILITIES AND EQUITY		61,410,412	59,283,725	9,407,492	9,181,381

These financial statements were authorised for issue by the board on 29 September 2011.



Chairman - Ngahiwi Tomoana



Board Representative - Rill Meihana

These financial statements must be read in conjunction with the accompanying notes.

Notes to and Forming Part of the Financial Statements

FOR THE YEAR ENDED 30 JUNE 2011

1 STATEMENT OF ACCOUNTING POLICIES Reporting Entity

Ngāti Kahungunu Iwi Incorporated (the society) is an incorporated society established under the Incorporated Societies Act 1908.

Ngāti Kahungunu Iwi Incorporated has several subsidiary entities.

The reporting entity comprises the society and consolidated group of the society and its subsidiaries (the group). The financial statements are prepared under generally accepted accounting principles.

Measurement Base

The accounting principles recognised as appropriate for the measurement and reporting of earnings and financial position on an historical cost basis are followed.

Differential Reporting

The group qualifies for differential reporting as it is not publicly accountable, and not large in size. The group has taken advantage of all available differential reporting exemptions except for FRS 19 Accounting for GST.

Specific Accounting Policies

The specific accounting policies which materially affect the measurement of financial performance and financial position have been applied.

(a) Consolidation

The purchase method of consolidation has been applied in preparing the consolidated financial statements. All inter entity transactions and balances have been eliminated on consolidation.

(b) Operating Revenue

This represents revenue earned from the sale of the group's products and services, investment income on the group's investments, and income earned on contracts for services, net of any credit allowed. Project and contract related income is recorded on an accruals basis, consistent with the degree of project or contract completion.

(c) Depreciation

Depreciation has been calculated using rates permitted by the Income Tax Act 2007.

Vehicles	20-32% DV
Plant & Computer Equipment	10-50% DV

(d) Income Tax

The group is registered as a charitable entity under the Charities Act 2005 so qualifies for an income tax exemption under the Income Tax Act 2007.

(e) Property, plant and equipment

Property, plant and equipment are stated at cost less accumulated depreciation.

(f) Investments and Advances

Investments and advances are recorded at cost or estimated net realisable value if there has been a permanent diminution in value. The shares in Aotearoa Fisheries Limited have been included at the value established by Te Ohu Kaimoana on transfer.

Notes to and Forming Part of the Financial Statements

FOR THE YEAR ENDED 30 JUNE 2011

(g) Intangibles

Fishing Quota

Quota received by the group as part of the Fisheries Asset Settlement has been recorded at the value placed on it for settlement purposes. Quota purchased has been recorded at cost. Quota is regarded as having an indefinite useful life because there is no foreseeable limit to the period over which it is expected to be useful. Quota is therefore not amortised. Instead, it is tested annually for impairment.

Emissions Trading Scheme Units

Emissions Trading Scheme (ETS) units acquired by the group have been included in revenue at the value established by the Ministry for the Environment. ETS units are regarded as having an indefinite useful life because there is no foreseeable limit to the period over which they are expected to be useful. ETS units are therefore not amortised. Instead, they are tested annually for impairment.

(h) Inventory

Inventories are valued at the lower of cost and net realisable value.

(i) Debtors

Debtors are stated at their estimated net realisable value.

(j) Taiwhenua/Taurahere distribution

Taiwhenua/Taurahere distributions are recorded as a movement in equity at the time the distributions are declared.

Changes in Accounting Policies

There have been no changes in the accounting policies during the year. All policies have been consistently applied.

	Consolidated		Parent	
2 INCOME	2011	2010	2011	2010
	\$	\$	\$	\$
Income includes;				
Dividends	620,192	120,590	1,640,000	1,400,000
Interest Income	547,126	421,743	223,049	172,637
Emission Trading Scheme Units Allocation	150,550	-	-	-
Government Grants	509,752	484,275	409,752	484,275

Comparative figures have been corrected for a misclassification of income. The effect is to increase Hi Ika income by \$240,228 and decrease Administration and Operating income by the same amount.

3 EXPENSES

Expenses include;

Depreciation	81,368	56,296	67,877	53,908
Bad and doubtful debts	-	-	-	-
Audit fees	21,423	20,142	12,782	12,496
Board member honoraria/ committee fees	246,847	224,551	158,113	152,551
Donations	-	-	-	-
Loss on sale of assets	-	5,243	-	5,243
Rent	69,280	55,631	60,037	55,631

Notes to and Forming Part of the Financial Statements

FOR THE YEAR ENDED 30 JUNE 2011

4 FISHING ASSET SETTLEMENT

In accordance with the Fisheries Act 2004, Kahungunu Asset Holding Company has received fishing settlement assets to manage on behalf of Ngāti Kahungunu Iwi. In July 2009 the company received additional settlement of fishing quota, valued at \$15,316,443 by TOKM at the date of transfer, plus cash totalling \$320,761 of which \$119,000 was paid to Ohu Tiaki O Rangitane Te Ika A Maui Trust and Te Atiawa ki te Upoko O Te ika A Maui Potiki Trust to gain agreement on Southern boundary (net settlement \$15,518,204).

5 TAIWHENUA/TAURAHERE GRANTS PAYABLE

The board requires certain criteria to be met prior to payments of grants. The expectation is that each Taiwhenua and Taurahere can fulfil the criteria.

6 EQUITY	Consolidated		Parent	
	2011 \$	2010 \$	2011 \$	2010 \$
Opening Balance - Retained earnings	6,361,468	4,983,072	3,053,287	2,952,159
Net Surplus for the year	2,292,436	1,541,850	430,384	264,582
Less: Taiwhenua Distribution	(239,420)	-	(239,420)	-
Less: Transfer to Emissions Trading Scheme	(150,550)	-	-	-
Less: Transfer to Reserve Fund	(140,433)	(163,454)	(140,433)	(163,454)
Closing balance Retained earnings	8,123,502	6,361,468	3,103,818	3,053,287
Opening Balance Reserve Fund	1,209,567	1,046,113	1,209,567	1,046,113
Add: Transfer from Retained earnings	140,433	163,454	140,433	163,454
Closing Balance Reserve Fund	1,350,000	1,209,567	1,350,000	1,209,567
Opening Balance Fisheries Settlement Assets Reserve	46,658,155	31,139,951	-	-
Add: Fisheries Settlement Assets Distribution	-	15,518,204	-	-
Closing Balance Fisheries Settlement Assets Reserve	46,658,155	46,658,155	-	-
Emissions Trading Scheme Reserve	-	-	-	-
Add: Emissions Trading Scheme Allocations	150,550	-	-	-
Closing Balance Emissions Trading Scheme Reserve	150,550	-	-	-
Total Equity	56,282,207	54,229,190	4,453,818	4,262,854

For prudential purposes the board of Ngāti Kahungunu Iwi Inc has resolved to set aside an amount of annual income each year into the Reserve Fund as an enduring capital base for the society.

Notes to and Forming Part of the Financial Statements

FOR THE YEAR ENDED 30 JUNE 2011

7 MOTOR VEHICLES & PLANT	Original Cost	Accum Depn	Closing Value
Parent 2011			
Vehicles	255,719	154,657	101,062
Plant & Machinery	196,968	137,025	59,942
	<u>452,687</u>	<u>291,682</u>	<u>161,004</u>
Parent 2010			
Vehicles	255,719	108,825	146,894
Plant & Machinery	175,523	114,980	60,543
	<u>431,242</u>	<u>223,805</u>	<u>207,437</u>
Consolidated 2011			
Vehicles	290,377	165,055	125,322
Plant & Machinery	210,490	142,916	67,573
	<u>500,867</u>	<u>307,971</u>	<u>192,895</u>
Consolidated 2010			
Vehicles	255,719	108,825	146,894
Plant & Machinery	181,021	117,778	63,243
	<u>436,740</u>	<u>226,603</u>	<u>210,137</u>

	Consolidated		Parent	
	2011	2010	2011	2010
8 INTANGIBLES	\$	\$	\$	\$
Quota Shares	26,730,371	26,730,371	-	-
Emission Trading Scheme				
NZ Units	150,550	-	-	-
	<u>26,880,921</u>	<u>26,730,371</u>	<u>-</u>	<u>-</u>

In 2007 and 2010 the Kahungunu Asset Holding Company received quota as part of the Fisheries Settlement. Under the Māori Fisheries Act 2004, the company must not sell its settlement quota until two years after transfer from Te Ohu Kaimoana. After two years, the company can only sell its settlement quota to another iwi or to a member of the Te Ohu Kaimoana group. The quota has been recorded at the value placed on it for settlement purposes.

In addition to the settlements, further quota has been purchased and is recorded at cost.

Kahungunu Asset Holding Company Limited has also received an allocation of New Zealand units as part of the New Zealand Government implementation of the Emissions Trading Scheme. These units have been recorded at the value established by the Ministry for the Environment.

Notes to and Forming Part of the Financial Statements

FOR THE YEAR ENDED 30 JUNE 2011

	Consolidated		Parent	
9 INVESTMENTS & ADVANCES	2011	2010	2011	2010
Investments in Subsidiaries	\$	\$	\$	\$
Shares TRONK (100%)	-	-	15,732	15,732
Shares Kahungunu Asset Holding Company (100%)	-	-	2,200,000	2,200,000
	-	-	2,215,732	2,215,732
Shares in other companies				
Aotearoa Fisheries Ltd	19,874,735	19,874,735	-	-
Fiordland Lobster Company	1,453,850	953,850	-	-
Napier Mussels Ltd (40%)	-	-	-	-
Aunty's Garden Ltd	-	-	-	-
KAHC Investments Ltd	-	-	-	-
	21,328,585	20,828,585	2,215,732	2,215,732
Advances				
Tamatea Taiwhenua	18,485	18,485	18,485	18,485
Napier Mussels Ltd	195,592	195,592	195,592	195,592
Less: Provision	(195,592)	(195,592)	(195,592)	(195,592)
	18,485	18,485	18,485	18,485
Amount due from/(to) Subsidiaries				
TRONK	-	-	(15,732)	(15,732)
	-	-	(15,732)	(15,732)
	21,347,070	20,847,070	2,218,485	2,218,485

The Kahungunu Asset Holding Company has received, as part of the 2007 Fisheries Settlement, 7,874 shares in Aotearoa Fisheries Ltd (AFL). This represents a 6.3% holding in that company. The shares have been recorded at the value established by Te Ohu Kaimoana on transfer. The net book value of the Kahungunu Asset Holding Company's shareholding in AFL as disclosed in its Annual Report at 30 September 2010 was \$24,342,565 (2009: \$22,547,575). Under the Māori Fisheries Act 2004, the company must not sell its AFL shares until two years after transfer from Te Ohu Kaimoana. After two years, the company can only sell its AFL shares to another iwi or to a member of the Te Ohu Kaimoana group.

The Kahungunu Asset Holding Company owns 131,590 ordinary shares and 100,000 redeemable convertible shares in Fiordland Lobster Company (FLC). This represents a 5.86% holding in that company. These shares have been included at cost. The net book value of the Kahungunu Asset Holding Company's share holding in FLC as disclosed in its Annual Report at 31 March 2011 was \$3,733,886 (2010: \$2,658,504).

The shares in Napier Mussels Limited (NML) have been transferred to Kahungunu Asset Holding Company during at nil value. The fully provisioned advance to NML remains in the society.

Aunty's Garden Limited and KAHC Investments Limited have not traded during the year.

The Society's wholly owned subsidiary companies are registered in New Zealand.

Notes to and Forming Part of the Financial Statements

FOR THE YEAR ENDED 30 JUNE 2011

	Consolidated		Parent	
	2011	2010	2011	2010
	\$	\$	\$	\$
10 BANK ACCOUNTS				
Petty Cash	214	60	214	60
Cheque Account	536,833	552,261	504,561	533,036
Call Account	177,889	220,408	4,708	2,660
Term Deposits	11,769,532	10,111,616	4,757,100	4,416,819
	<u>12,484,468</u>	<u>10,884,345</u>	<u>5,266,583</u>	<u>4,952,575</u>

Deposits totalling \$2,810,324 (2010 \$2,658,444) arise from fishing receipts and are being held in trust subject to resolution of disputes regarding allocation.

11 STOCKS ON HAND

Merchandise	150	460	150	460
	<u>150</u>	<u>460</u>	<u>150</u>	<u>460</u>

12 SETTLEMENT QUOTA RECEIVABLE

Kahungunu Asset Holding Company Ltd holds CRA3 quota to the value of \$1,617,057 which is receivable by Ngāti Kahungunu Iwi Inc. and on payable as part of an agreed settlement between Ngāti Kahungunu Iwi Inc. and Rongomawahine Iwi Trust (refer note 14 below).

13 MOTOR VEHICLE FINANCES

Total instalments outstanding	44,350	88,700	44,350	88,700
	<u>44,350</u>	<u>88,700</u>	<u>44,350</u>	<u>88,700</u>
Payable within 1 year	44,350	44,350	44,350	44,350
1-2 years	-	44,350	-	44,350
2-5 years	-	-	-	-
	<u>44,350</u>	<u>88,700</u>	<u>44,350</u>	<u>88,700</u>

14 PROVISIONS

The provision includes the CRA3 quota referred to in note 12 above and an amount of \$2,810,324 set aside to settle the dispute with the Rongomaiwahine Iwi Trust in accordance with the deed of settlement signed 21 July 2006. The exact amount of the settlement is not known as the dispute is still to be settled.

15 RELATED PARTY TRANSACTIONS

Related parties of the society include directors, subsidiaries and entities in which directors also hold governance positions.

The society paid fees to the directors during the year. The value of these are shown in note 3.

There were no amounts outstanding at balance date relating to these transactions.

The society receives a dividend from Kahungunu Asset Holding Company Ltd.

During the year the Kahungunu Asset Holding Company Ltd paid a dividend of \$1,640,000 to the society. (2010: \$1,400,000)

KAHC Investments Ltd is a subsidiary of Kahungunu Asset Holding Company Ltd. It has been created to hold post settlement quota, such as new species that are introduced into the quota management system, and has not yet traded.

The society collects and distributes funds on behalf of and to constituent Taiwhenua and Taurahere organisations.

There are common board members between the society and the Taiwhenua and Taurahere organisations.

Notes to and Forming Part of the Financial Statements

FOR THE YEAR ENDED 30 JUNE 2011

RELATED PARTY TRANSACTIONS (continued)

The Kahungunu Asset Holding Company paid consultancy fees to Chris O'Reilly Consultancy Limited in which Mr C. O'Reilly a director, has an interest, to Brierley Business Development Ltd in which Mr P Brierley, a director, has an interest and to Mrs C Teariki. These were paid at normal commercial rates, and there was \$6,202 outstanding at balance date.

H Mikaere is a director of both the Kahungunu Asset Holding Company, Aotearoa Fisheries Ltd and Napier Mussels Ltd. Dividends were received by the group from Aotearoa Fisheries Ltd. A Ropiha is the General Manager of Kahungunu Asset Holding Company Ltd and a director of Fiordland Lobster Company Ltd. Transactions between Kahungunu Asset Holding Company and Fiordland Lobster Company include Annual Catch Entitlement (ACE) sold to FLC, dividends and directors fees received from FLC.

N Tomoana is a director of Treaty Tribes Coalition Ltd and was Chairman of Te Ohu Kai Moana Trustee Ltd until May 2010. Te Ohu Kai Moana Trustee Ltd also distributed Fisheries Settlement Assets to the Kahungunu Asset Holding Company as detailed in note 8.

16 SUBSEQUENT EVENTS

The Māori Commercial Aquaculture Claims Settlement Act 2004 provides for a settlement to iwi through its Iwi Aquaculture Organisation for 20% of marine farming space where permits leases or licenses were issued between September 1992 and January 2005. This is referred to as 'pre-commencement space'.

Subsequent to balance date, the society has reached agreement with the Crown for settlement of 20% of the marine farm in Hawke's Bay and a cash settlement has been agreed to the value of \$1,499,845.00. The settlement was negotiated in the current year with the agreement to be signed by 30 September 2011.

There have been no other events subsequent to balance date that have an effect on these financial statements.

In the prior year, the society was deregistered from the Charities Register on 23 August 2010 for failing to file annual returns as required by Section 42 of the Charities Act. Re-registration was achieved on 7 September 2010.

17 COMMITMENTS AND CONTINGENT LIABILITIES

The society agreed to purchase a double hulled waka for \$500,000. At the request of the vendor settlement has been deferred.

The board has made a commitment to put \$1,000,000 cash or in kind towards the Kahungunu Cultural Centre.

18 OPERATING LEASE COMMITMENTS

Non-cancellable operating lease rentals are payable by the parent as follows:-

	Consolidated \$	Parent \$
Within one year	43,362	35,302
Greater than one year	49,327	38,244
	<u>92,689</u>	<u>73,546</u>

19 CONTINGENT ASSETS

As part of the agreement signed between Kahungunu Asset Holding Company Limited and Northland Deepwater Limited, Kahungunu Asset Holdings Company Limited is also entitled to a share of the Northland Deepwater Limited profit for the 2010/11 fishing year, paid upon completion of audited accounts. At the date of these accounts, the audited accounts of Northland Deepwater Limited have not been completed so Kahungunu Asset Holding Company Limited's share is yet unknown.

Audited Accounts 2010-2011



To the Members of Ngāti Kahungunu Iwi Incorporated

We have audited the financial statements of Ngāti Kahungunu Iwi Incorporated (the society) and group on pages 24 to 32, which comprise the consolidated and parent statement of financial position as at 30 June 2011, and the consolidated and parent statement of financial performance and statement of changes in equity for the year then ended, and a summary of significant accounting policies and other explanatory information.

Board of Directors' Responsibility for the Financial Statements

The Board of Directors is responsible for the preparation and fair presentation of these financial statements in accordance with generally accepted accounting practice in New Zealand and for such internal control as the Board of Directors determines is necessary to enable the preparation of financial statements that are free from material misstatement, whether due to fraud or error.

Auditor's Responsibility

Our responsibility is to express an opinion on these financial statements based on our audit. We conducted our audit in accordance with International Standards on Auditing (New Zealand). Those standards require that we comply with ethical requirements and plan and perform the audit to obtain reasonable assurance about whether the financial statements are free from material misstatement.

An audit involves performing procedures to obtain audit evidence about the amounts and disclosures in the financial statements. The procedures selected depend on the auditor's judgement, including the assessment of the risks of material misstatement of the financial statements, whether due to fraud or error. In making those risk assessments, the auditor considers internal control relevant to the entity's preparation and fair presentation of financial statements in order to design audit procedures that are appropriate in the circumstances, but not for the purpose of expressing an opinion on the effectiveness of the entity's internal control. An audit also includes evaluating the appropriateness of accounting policies used and the reasonableness of accounting estimates, as well as evaluating the overall presentation of the financial statements.

We believe that the audit evidence we have obtained is sufficient and appropriate to provide a basis for our audit opinion.

Our firm has, using staff independent of the audit engagement team, provided business computing assistance and advisory services during the year. Other than this and our role as auditors we have no relationship with or interests in the society or its subsidiary companies.

Opinion

In our opinion, the consolidated and parent financial statements on pages 24 to 32 present fairly, in all material aspects, the financial position of the society and group as at 30 June 2011 and its financial performance for the year then ended in accordance with generally accepted accounting practice in New Zealand.

A handwritten signature in blue ink, appearing to read 'Staples Rodway', written over a faint circular stamp.

Staples Rodway Hawke's Bay Partnership
29 September 2011
Hastings, New Zealand



Ngāti Kahungunu Iwi
INCORPORATED

Annual Plan 2011-2012

The Ngāti Kahungunu Iwi Inc annual plan describes the key objectives for the iwi between July 2011 and June 2012. The activities are based on the following Ngāti Kahungunu Iwi Inc. strategies: He Mahere Rautaki Hai Haumanu I Te Reo O Ngāti Kahungunu - The Revitalization of Te Reo o Ngāti Kahungunu, Kahungunu Ki Uta, Kahungunu Ki Tai - Marine and Freshwater Fisheries Strategic Plan and Te Ara Toiora O Ngāti Kahungunu, the Kahungunu Wellbeing Strategy. Political development and Economic growth are strategic priorities for the iwi.

HE MAHERE RAUTAKI HAI HAUMANU I TE REO O NGĀTI KAHUNGUNU STRATEGIC PLAN FOR THE REVITALIZATION OF TE REO O NGĀTI KAHUNGUNU

- Whakamana i te Pae o Huaki Pōuri – Support the revitalization of Ngāti Kahungunu Paepae
- Review the Te Reo Strategy
- Develop Kahungunu Leadership Programmes
- Manage the Ministry of Education Kahungunu Cultural Standards (KCS) and Community Based Language Initiatives (CBLI) Contracts
- Ensure Te Reo capability and capacity across Iwi Board and the tari is improved
- Provide cultural support to Te Ara Toiora and Kahungunu ki Uta, Kahungunu ki Tai Strategies

KAHUNGUNU KI UTA, KAHUNGUNU KI TAI MARINE AND FRESHWATER FISHERIES STRATEGIC PLAN

- Implement the KKUKKT plan which grows and protects marine and freshwater species and habitats mai i Paritū ki Turakirae, tuahiwi maunga me ngā tuahiwi moana
- Establish fisheries governance infrastructure and operational capacity
- Develop fisheries information system(s) and database(s). Use databases to inform decisions and research needs
- Continue the development of “Special Projects” and Research programme
- Develop relationships across sectors with influence over fisheries in the rohe and work towards agreement on local management of fisheries
- Develop a training and development strategy that builds skill, expertise and capacity of hapū and iwi fisheries managers and rangatahi
- Assist hapū development of rohe moana management plans to support local management of fisheries
- Assist hapū to develop joint ventures with the Kahungunu Asset Holding company
- Share the Kahungunu ki Uta, Kahungunu ki Tai integrated fisheries management model across the Pacific and the world
- Hold Kahungunu ki Uta, Kahungunu ki Tai events that celebrate Tangaroa

TE ARA TOIORA O NGĀTI KAHUNGUNU KAHUNGUNU WELLBEING STRATEGY

- Coordinate opportunities for more effective service delivery to achieve whānau resilience and wellbeing by encouraging a seamless service environment for whānau, and eliminating barriers that inhibit wellbeing of whānau
- Facilitate, broker and advocate support with extended whānau and agencies on behalf of whānau
- Develop wellbeing initiatives and strategies to progress and enhance whānau, hapū, iwi wellbeing
- Progress the aims of the Te Ara Toiora Strategy for Ngāti Kahungunu
- Increase the quality of resources to help whānau to achieve wellbeing
- Provide opportunities for whānau to gather knowledge for wellbeing, and create an opportunity to plan for and evaluate wellbeing whānau
- Explore research opportunities

NGĀI TAUNAKI SUPPORT SERVICES

- Plan, lead and manage the following iwi events and activities that strengthen communal ties to enhance the mana of Kahungunu
 - Five (5) Rugby Hāngi Haka events
 - The 2011 Kahungunu Sports Awards
 - The 2011 AGM Pā Sports
 - The Kahungunu Waitangi Day
 - Six (6) Matariki events
- Grow and develop the level of benefits offered to our members on an annual basis
- Improve the communication systems within the office to enable more reach
- Increase the number of registered members and update our database
- Provide robust, open and transparent financial reporting to the CE, Directors and the Board
- Engage with providers who will benefit our people and align their goals to our professional needs.
- Provide quality administrative service to the Board
- Ensure a robust ICT system for the office.

NGĀ TŌRANGAPŪ POLITICAL

- Increase Kahungunu Leadership and Participation
- Oversee the Constitutional Review and WAI262 response
- Monitor the 2009 Board Review Progress
- Provide support toward the Ōtautahi recovery and development

NGĀ WHAI RAWA ECONOMIC DEVELOPMENT

- Protect and grow Iwi assets
- Engage with the Kahungunu Asset Holding Company on Commercial priorities
- Appoint a Project Manager to provide scoping reports toward the establishment of an Innovation Centre
- Develop a three year funding plan for the purchase of the Waka Hourua



Rugby • Haka • Hangi

Festival

September - October 2011



RWC 2011 ROADSHOW



These pictures were taken during the Rugby Haka Hangi Festivals held in Wairarapa, Heretaunga, Pukehou, Dannevirke and Wairoa.



AGM 26 NOVEMBER
9AM SPLASH PLANET, HASTINGS